



Highland RIDGE RV

Open Range



Serial #: 58TBM0BU8S3A23068
Model: 338BHS OPEN RANGE TT

Model Year: 2025 Dealer Name: Recreation USA
1801 Hwy 9
Longs, SC 29568
USA

Manufacturer's Suggested Retail Price \$86,123.00

TOTAL AMOUNT DOES NOT INCLUDE STATE AND LOCAL TAXES OR LICENSE FEES. THE PRICE SHOWN ABOVE MAY OR MAY NOT BE REPRESENTATIVE OF THE ACTUAL SELLING PRICE OF SIMILAR RECREATIONAL VEHICLES IN YOUR AREA.

Standard Equipment

THE FOLLOWING ITEMS ARE STANDARD ON THIS MODEL AT NO EXTRA CHARGE

- EXTERIOR**
- 100" wide body frame
 - A frame flip up storage tray
 - 2-30 lb. LP bottles
 - 4" tube storage bumper
 - 50 amp service
 - ACCU-SLIDE™ slide system (42" deep 4-corner compression)
 - Battery disconnect switch
 - Brass hanger bushings with wet bolts
 - Equa-Flex® axle suspension
 - Exterior grill/griddle quick connect port
 - Frameless windows
 - Norco™ 5.1 stabilizer system with BAL™ lock arms
 - PVC roofing membrane (limited lifetime warranty)
 - Rear roof access ladder
 - Self-adjusting electric brakes
 - Spare tire
 - TuffShell™ - vacuum bonded laminated construction, reinforced with heavy-duty fiberglass and welded aluminum frames
 - Xtend Solar I Package (1-200 watt solar panel with 30 amp controller)
- FOUR SEASON PACKAGE (Mandatory)**
- Double insulated baggage doors
 - Ducted heat to underbelly with cold air return
 - Enclosed cable operated gate valves
 - Enclosed exterior docking station with black tank flush
 - Heated and enclosed underbelly
 - High performance furnace
 - R-38 reflective foil insulation in ceiling and underbelly
 - R-9 block foam insulation in sidewalls

- INTERIOR**
- 9" 3 layer firm/soft option residential mattress
 - 17 cu. ft. 12V refrigerator
 - 60" x 78" residential queen bed with storage below
 - 75 lb. ball bearing drawer guides
 - Cable and satellite prep
 - Flush floor slides with residential vinyl flooring
 - Glass shower door
 - Hardwood slideout fascia
 - Large oven and 3-burner range with flush mount glass cover
 - LED interior lighting
 - Observation camera prep
 - Pet/Child Screen Guard on Screen Door
 - Raised panel hardwood doors
 - Residential microwave
 - Roller blackout night shades
 - USB ports in bedroom
- EXECUTIVE PACKAGE (Mandatory)**
- 15,000 BTU A/C with quiet residential return air-bedroom
 - 15,000 BTU A/C with quiet residential return air-main living
 - Cutting board and sink strainer
 - Dome style digital TV antenna with Wi-Fi prep
 - Interior convenience center light
 - Keyed-Alike® entry and baggage doors
 - Painted fiberglass front cap with LED lighting
 - Power awning with LED lighting
 - Power tongue jack
 - Quick recovery gas/electric water heater
 - Quick release fresh water drain
 - Residential high-rise faucet with pull-down sprayer
 - Single basin stainless steel under-mount kitchen sink
 - Smart Entertainment HDTV with bluetooth®, Soundbar and Built in Stereo
 - Solid swing-down entry steps
 - Solid-surface kitchen countertops
 - Stainless steel appliances
 - TravelLINK® - Smart RV system that allows for Bluetooth® control of awnings, lighting, slideouts, heating, cooling and more
 - USB/12V charging port

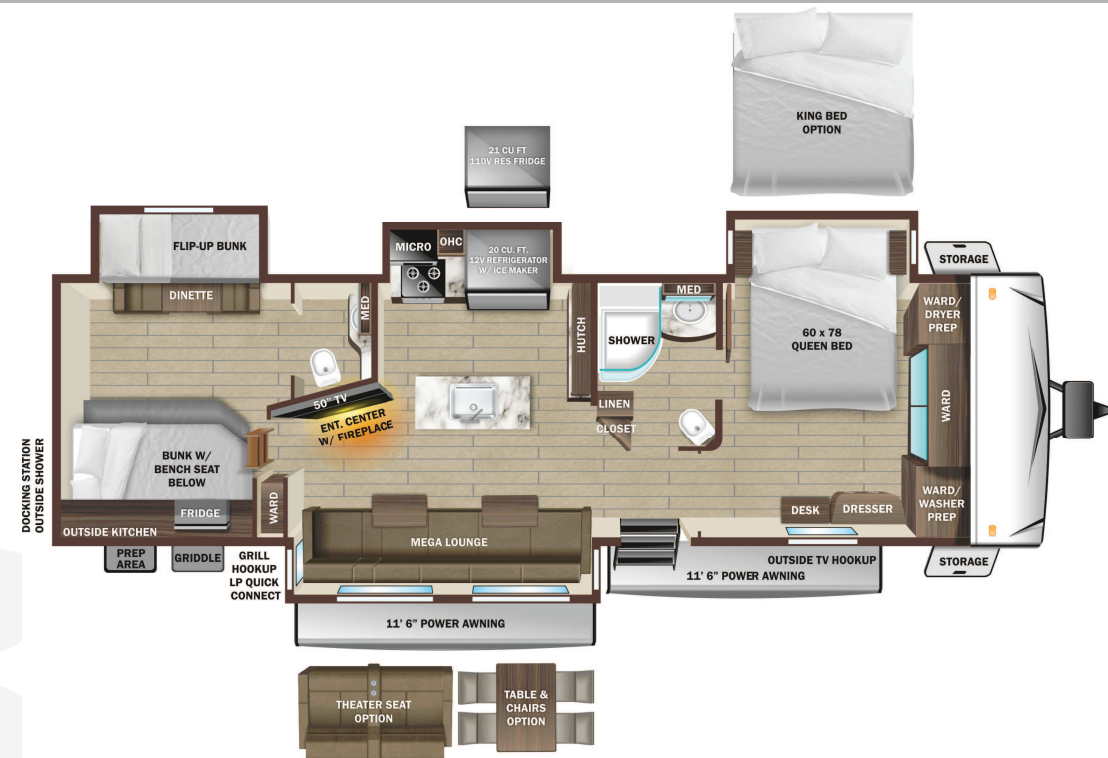
Optional Equipment

OPTIONAL EQUIPMENT INSTALLED ON THIS VEHICLE BY MANUFACTURER

- Base price 74,999.00
- USA STANDARDS n/c
- EXECUTIVE PACKAGE 6,000.00
- FOUR SEASONS PROTECTION PACKAGE 750.00
- NO HEAT PUMP n/c
- POWER FAN VENT WALL CONTROL BATHROOM 375.00
- 21 CU. FT. 110 VOLT REFRIGERATOR ON DEMAND HOT WATER HEATER 1,238.00
- HEATER 293.00
- NO BEDROOM TV n/c
- WINDOWS STANDARD n/c
- 7.3 AUTO LEVEL 1,943.00
- MEGA LOUNGES n/c
- KING BED 525.00

UNIT TOTAL **86,123.00**

DEALER INSTALLED OPTIONS



UVW
10647 lbs

Sleeps

Length
39' 6.13"

DIMENSIONS

Exterior height:.....141.50"

Exterior width:.....100.13"

WEIGHTS

GVWR:.....12200

GAWR (front):.....6000

GAWR (rear):.....6000

Approx. Gross Cargo Carrying Capacity (GCCC):.....1553

Capacity (GCCC):.....1553

TIRES

Tire size (front):.....ST235/80R16E

Tire size (mid):.....

Tire size (rear):.....ST235/80R16E

CAPACITIES

Fresh water tank (gals.):...43.00

Gray water tank (gals.):...66.00

Black water/toilet tank (gals.):...66.00

Propane (lbs.):.....60

Propane (gals.):.....14

Water heater (gals.):.....0.25

Water heater (gals.):.....0.25

SEATING & SLEEPING

Some dimensions may be rounded and may vary from the actual dimensions

***Weights may be estimated calculations and may vary from the actual weight

- refer to the vehicle weight labels for actual weights***

Floorplans, features and specifications are subject to change without notice.

