

Renegade
RV
REV GROUP

LEGENDARY RENEGADE QUALITY 2020
VERONA
LE



EXTREME LUXURY
EXTREME PURPOSE
EXTREME DURABILITY



VERONA LE 38LDG SHOWN IN VANILLA FROST DÉCOR WITH NUTMEG CABINETS IN OPTIONAL HIGH GLOSS FINISH.

Verona LE, with its large opposing slideouts, offers a spacious living area with amazing storage and luxurious features. Beautiful hardwood cabinetry, gleaming polished porcelain tile floors, and sumptuous Ultraleather upholstered furniture let you know you have arrived in style.



HIDE AWAY

Verona LE has a great story to tell when it comes to exterior storage. Heavy gauge steel compartments are lighted and fully lined. The aluminum insulated doors have a single handle that secures the doors at two latch points for a sure seal every time. Gas assist struts help open and close the doors and remote locking makes loading and unloading a breeze.

VERONA LE AT A GLANCE*

EXTERIOR HEIGHT	<12' 8">
EXTERIOR WIDTH	<99 1/4">
EXTERIOR LENGTH	<40' 2"> ¹
INTERIOR HEIGHT	<7'>
WHEELBASE	<309"> ²
FUEL CAPACITY	<100 GALLONS>
FRESH WATER CAPACITY	<150 GALLONS>
GREY WATER CAPACITY	<75 GALLONS>
BLACK WATER CAPACITY	<75 GALLONS>

*For all models unless otherwise noted

¹ For LRB and LTS models. LDG is 38' 2"

² For LRB and LTS models. LDG is 285"

BED & BATH

Relax and enjoy the spacious master suite, with a standard king size iRelax memory foam mattress, large his and hers wardrobes, and ample dresser drawers. A convenient multiplex panel directly over the bed controls the lighting, ceiling paddle fan, and generator controls, within easy reach. And your private entertainment package includes a 32" LED TV with a BluRay player, and is prewired for access to multiple media sources.

VERONA LE 38LDG SHOWN IN VANILLA FROST DÉCOR WITH NUTMEG CABINETS IN OPTIONAL HIGH GLOSS FINISH.



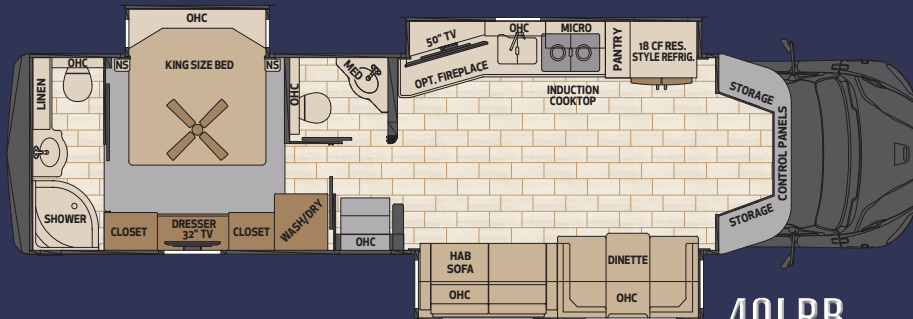
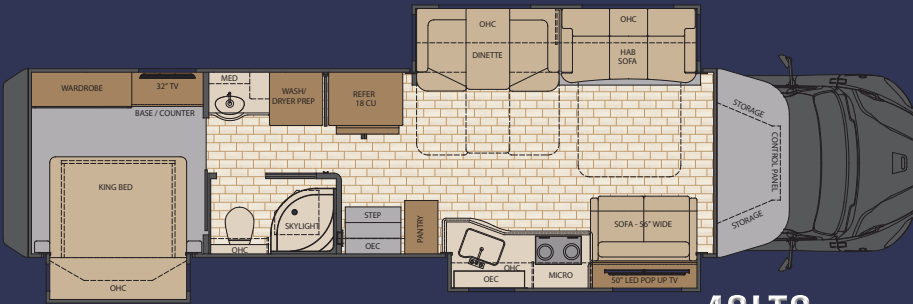
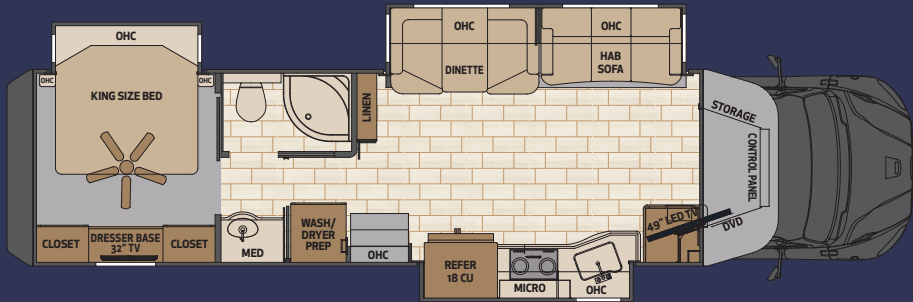
The bath has a large one-piece fiberglass shower with granite texture, built in seat and shelves, a skylight and a glass enclosure with a sliding door, allowing easy entry and exit from the shower.



KITCHEN

The Verona LE kitchen is functional and efficient, with Maple hardwood cabinets, polished solid surface countertops, and stainless steel appliances. The drawers are fully finished inside and out, and have satin-nickel hardware, soft-closing guides, and dovetail construction.

FLOOR PLAN OPTIONS



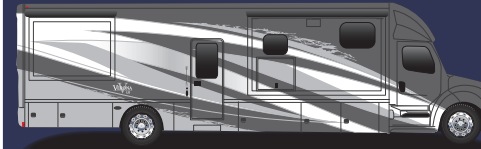
PAINT OPTIONS



LATTE



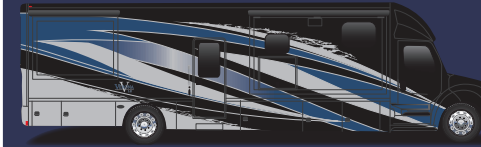
ANTHRACITE



SNOWDRIFT



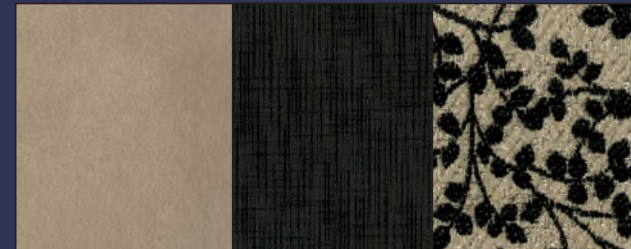
ROUGE



MARITIME (ON COVER)

INTERIOR OPTIONS

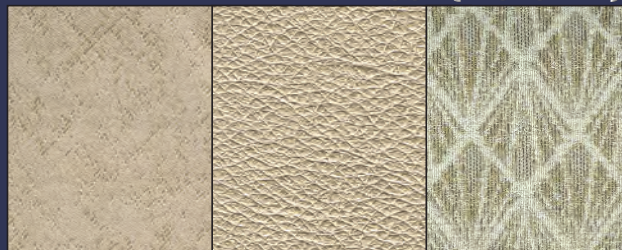
BLACKBERRY VINE



SMOKEY TAUPE

VANILLA FROST (PICTURED)

RIVERSTONE



STANDARD & OPTIONAL FEATURES

CONSTRUCTION

- Smooth, high-gloss one-piece fiberglass wall surface
- 2" vacuum laminated sidewalls with welded tubular aluminum framing
- 1.5" high-density foam insulation in sidewalls and roof
- Welded aluminum framed wall cutouts
- Two-piece molded rear cap and bumper system
- Welded tubular aluminum roof truss system with framed cutouts
- One-piece crowned fiberglass roof surface "Super Sandwich" floor construction consisting of 3/4" Fir Plywood Deck over 2x4 wood-framed residential floor, 2" welded steel floor joist system, 3" steel longitudinal floor beams
- Three inch premium grade mineral wool sound deadener and thermal insulation in floor
- Galvanized steel vapor barrier

EXTERIOR FEATURES

- Full-body paint package with clearcoat and 5 choices
- Fiberglass molded tank covers and cab steps with stainless treads
- Side-hinged aluminum compartment doors with Strut assist system and chrome paddle latches
- Fully-lined powder-coated steel storage Compartments
- LED brake, turn and high-mount brake lights
- Roof-mounted Girard lateral arm awning with LED lights
- Aluminum wrapped auto-deploy/retract awnings over all slide outs
- Frameless dual pane windows, tilt-opening design with screens
- Keyless entry door touchpad lock
- LED patio light at entry door
- Exterior entertainment center with smart 32" LED TV, AM/FM/CD/DVD player
- Equalizer fully automatic 4-point hydraulic leveling system
- Remote locking/unlocking luggage doors
- 20,000 lb. hitch with 7-way flat pin tow connection
- Diamond shield front mask
- Chrome side and rear LED docking lights
- Equalizer leveling system with Bluetooth app control

ENTERTAINMENT SYSTEMS

- Garmin Infotainment System with RV specific navigation
- Portable touch screen tablet with WIFI connectivity

- Custom tuned JBL cab sound system
- Color side and rear view cameras
- Sirius/XM satellite ready (requires customer subscription)
- Soundbar home theater with Bluetooth streaming capability
- 50" Smart LED TV and BluRay player in living area
- 32" Smart LED TV and BluRay player in bedroom
- Winegard In-Motion satellite (customer supplies receiver)
- Rooftop antenna with standard and HD signal capability

INTERIOR FEATURES

- Ultra-leather furniture package throughout
- Sofa with Queen size slide-a-bed sleeper
- Dinette seating with convertible bed and storage drawers
- Solid-maple hardwood cabinets, maple hardwood doors with hidden hinges and dovetail hardwood drawers throughout
- Soft close full extension ball bearing drawer guides
- Satin nickel cabinet door and drawer pulls
- Polished solid surface countertops and dinette table
- Ledger stone galley backsplash
- Stonecast deep bowl kitchen sink with solid surface covers
- Satin nickel single-handle kitchen faucet with pull-out sprayer
- 12" x 24" polished porcelain tile floor
- Galley, LR, bath and hallway
- Hardwood pull-out style pantry
- Deluxe carpeting with pad, living room slideout and bedroom
- 7' interior ceiling height
- Maxxair fans with one handheld remote
- Manual day/night roller shades
- Energy efficient LED flush mount ceiling lighting
- LED floor level lighting
- Deluxe fabric window valances and lambrequins
- LED toe kick lighting in kitchen
- Decorative sofa accent pillows
- King size iRelax mattress, 72" x 74" with bedspread and pillows
- Hardwood framed deluxe padded headboard
- Full-length wardrobe with removable shelf and shoe storage
- Swivel pedestals on driver and passenger captain's chairs
- Air adjustable lumbar seats with armrest
- Lighted entry steps with rubber treads and under-step storage

- Accent décor wall covering in all slide-out areas
- Solid surface entry step area with LED lighting

ELECTRICAL SYSTEMS

- 8KW Onan Quiet Diesel Generator with auto gen start system
- 2,800 watt inverter
- (2) 8D AGM house batteries
- Centralized command center
- 50 amp electrical panel
- Multiplex lighting and electrical system with color touch screen and Bluetooth app control
- 12V holding tank heaters on grey and black tanks
- Power retract 50 amp power cord reel
- USB/110V charging outlets in bedroom and living room areas
- Transfer switch with surge protection

BATH SYSTEMS & AMENITIES

- Deluxe hardwood vanity, medicine and linen storage cabinets
- Fiberglass one-piece shower with Granite texture finish and glass surround and door
- Tinted shower skylight
- Whole-house water filter system
- Solid-surface countertop with integrated Solid-surface sink
- Black tank flush system
- Outside faucet with sprayer
- Porcelain electric Macerator toilet

CHASSIS AND CAB

- Freightliner M2, 34,300 GVWR, 60,000 GCWR
- Cummins L9 350HP, 1,150 lb.ft. torque
- Allison TRV3200 electronic 6-speed transmission with dash shifter
- Front 295/75R22.5 radial tires, 16 ply
- Rear 295/75R22.5 radial tires, 14 ply
- Accuride polished aluminum wheels with center caps
- Air brakes with 4-wheel ABS and auto slack adjusters
- Trailer brake controller
- Airliner rear air suspension
- Dual 50 gallon aluminum fuel tanks, total of 100 gallon capacity
- 6 gallon diesel exhaust fluid (DEF) tank, driver's side of cab
- One-piece panoramic cab windshield
- Aluminum automotive cab construction, designed and tested for occupant protection
- 3-piece chrome front bumper with integrated fog lights
- Premium freightliner heat/sound insulation package

- Power driver/passenger windows and door locks
- Power/heated remote control mirrors
- Electronic cruise control
- Automotive cab carpet liner with matching floor mats
- Tilt and telescoping steering wheel
- Custom wheel skirts on front cab wheelwells
- Premium freightliner feat/sound insulation
- Auto cab carpet liner
- LED headlight assemblies

APPLIANCES & UTILITIES

- 18 cu. ft. stainless steel French door residential refrigerator with icemaker
- Recessed 2-burner electric induction cooktop, ceramic surface
- Solid-surface covers for cooktop and sink
- Samsung stainless steel convection microwave oven
- AquaHot 450D diesel fueled hydronic heating system with engine pre-heat
- Dual 15,000 BTU low profile roof A/C w/ heat pumps and chill grill
- Pre-wired and plumbed for optional washer/dryer
- Solar charging prep
- Winterization kit

POPULAR OPTIONS

- Stackable washer/dryer
- Exterior refrigerator/freezer on a slide tray
- Exterior quick disconnect LP line (requires propane package)
- Theatre seating in lieu of standard sofa
- 60" x 74" Queen size bed
- Propane package with 13 Cu.Ft. refrigerator and 3-burner LP cooktop, LP tank and gauge
- Porcelain tile flooring in bedroom in lieu of standard carpeting
- Full width mudflap with stainless steel accents and logo
- Table with credenza and free standing dinette chairs
- Power retract water hose reel
- High-gloss cabinet finish
- Central VAC system
- Electric fireplace with remote control (40LRB and 40LTS only)
- Honed porcelain tile in place of standard tile (limited color selections)
- Storage ottoman
- Dual solar panels at 175 watts each

Renegade
RV
REVGROUP



LUXURY QUALITY RVs. FOR WORK, PLAY, OR BOTH.

your
DESIGNED FOR LIFE

52216 SR 15, BRISTOL IN 46507

888.522.1126

RENEGADERV.COM

YOUR VERONA LE DEALER: