

# EASTERN COUGAR

PREMIUM FIFTH WHEELS, HALF-TON FIFTH WHEELS & TRAVEL TRAILERS



WARRANTY FOR  
FULL TIME RVING\*

\*REFERENCE KEYSTONE RV COMPANY OWNERS MANUAL FOR LIMITED WARRANTY DETAILS



LIVE IT OUT.

# COUGAR



## Engineering and design that starts with the customer.

Committed to innovation, quality, style and affordability, Keystone's Cougar brand sells more mid-profile fifth wheels and luxury travel trailers than any other brand. The Cougar line-up is designed to grow with your family, from your first RV to your last. Cougar takes the time to understand how you travel in each life stage, so that we can provide families with the best camping experiences, year after year, Cougar after Cougar. You can count on every Cougar to deliver user-friendly floorplans, unparalleled towability, innovative features and luxurious touches that make it America's most-awarded RV brand.

For more information, please visit [keystonerv.com/Cougar](http://keystonerv.com/Cougar)



# KEYSTONE EXCLUSIVE INNOVATIONS

Designed to deliver superior performance, quality, and a best-in-class camping experience, every Cougar model includes engineering innovations available EXCLUSIVELY to Keystone owners. For more information about these features and the Keystone Innovation Lab, visit us online at [www.keystonerv.com/innovations](http://www.keystonerv.com/innovations).



### HyperDeck™ High-Performance, Water-Resistant RV Floor

The HyperDeck RV floor is more resilient, stronger and lighter than traditional laminated wood construction – and it resists water and water damages.



### Blade™ High-Performance Air Flow System & Tuf-Lok™ A/C Duct Joiners

Blade™ & Tuf-Lok™ are designed to accelerate air flow, eliminate leakage and failure points, and deliver 360° circulation.



### 4G LTE and Wi-Fi Prep

All units are equipped with a new antenna that integrates 4G LTE and Wi-Fi with standard VHF/UHF/AM/FM.



### Tru-fit™ Slide Construction

A more durable slide room design that minimizes functional motor and structural stress and resists leaking.



### Color-Coded Unified Wiring Standard

Easy-to-trace circuits simplify electrical and entertainment system troubleshooting.



### KeyTV™

No more connection guesswork or poor reception. KeyTV offers a game-changing, single point of control of over-the-air, cable, and satellite feeds.



## 3-YEAR LIMITED STRUCTURAL WARRANTY, 1-YEAR LIMITED BASE WARRANTY

Every new Keystone RV comes with the industry's best three-year limited structural warranty AND a one-year limited base warranty. Ask your dealer, visit [keystonerv.com](http://keystonerv.com), or call Keystone Owner Relations for details.



more product detail at  
[www.keystonerv.com/Cougar](http://www.keystonerv.com/Cougar)



## INTRODUCING THE ALL-NEW SIGNATURE SERIES BY AMY GRAY

This year, Cougar introduces an all-new Amy Gray Signature Series interior, the creative force behind one of the most successful interior redesigns in Keystone history. Cougar's new Driftwood interior features a modern rustic design with vintage-inspired antique white cabinetry, geometric details, hidden hinges, and smoked glass panels. Rough hewn wood accents ground the look, connecting with campers' affinity for the natural world.





### A STUDY IN CONTRASTS

Light flooring and wall coverings are a modern complement to the clean lines of Cougar's mid-tone wood cabinetry and satin nickel finishes.



### SHOW-STOPPING TOUCHES

Cougar's master bedroom is transformed with a rustic, reclaimed wood feature wall and recessed accent lighting.



## COUGAR "OTG" SOLAR/INVERTER PREP AND OPTIONAL SOLAR PACKAGE

- Roof mounted, dual-port access with solar charger prep located in pass-through storage compartment for roof mounted applications
- Sidewall port access for portable solar panel systems
- Inverter prep conveniently located in the pass-through storage compartment
- Up to 4 - 110V outlets on every unit are prepped for inverted use with wiring conveniently terminated in the pass-through compartment for an optional inverter
- Designed for dual battery usage and longer-lasting charges

SCAN HERE FOR FULL DETAILS



## CLIMATE GUARD PROTECTION PACKAGE

Zero to 110 degree rated, larger heating and cooling units, with in-floor heat ducting, 12V heat pads, two attic vents, and increased insulation.

SCAN HERE FOR FULL DETAILS



## RESIDENTIAL, 12V & RV REFRIGERATORS

COUGAR IS NOW OFFERING REFRIGERATOR OPTIONS TO SUIT ANY STYLE OF CAMPER.

### LUXURY FW'S

- **Residential refrigerator:** 16 cu. ft. for more storage, faster cooling, and an attractive residential feel (can be used during travel).
- **Gas/electric refrigerator:** 12 cu. ft. of storage, and runs off of LP making it ideal for dry camping.

### HALF-TONS (FW & TTs)

- **12V refrigerator:** 10 cu. ft of storage, cools faster than traditional gas absorption RV refrigerators, can be used during travel, and only draws around 3 Amps of power making them incredibly efficient.
- **Gas/electric refrigerator:** 8 cu. ft. of storage, and runs off of LP making it ideal for dry camping.



# MODERN AMENITIES

Cougar provides an all-access pass to premium features and smart RVing wrapped in an unbelievably luxe interior design.



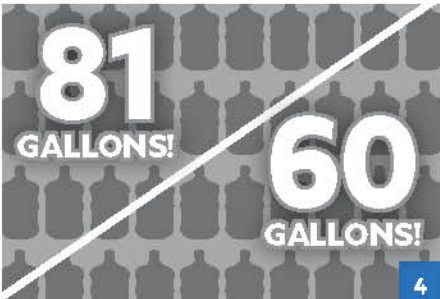
1



2



3



4



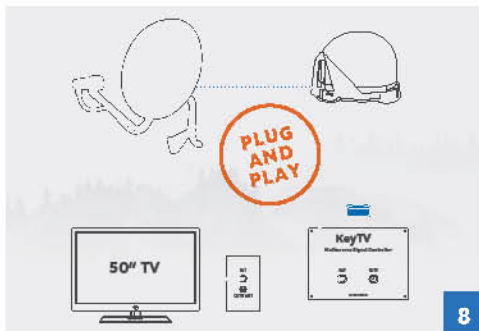
5



6



7



8



9

### 1. 2" ACCESSORY RECEIVER OR TOWING HITCH

Every cougar comes standard with a receiver hitch suitable for accessories approved for RV use. Select models feature a towing hitch allowing you to tow a watercraft up to 3,000 lb.

### 2. 4K 50" TV W/ SWING ARM MOUNT

Enjoy movie nights with 4K clarity at any angle (select models).

### 3. NEW IN-COMMAND® GENERATION 3 W/ GLOBAL CONNECT

Gives owners total control over power, slide rooms, awnings, HVAC and more, from a convenient master control panel as well as an enabled smartphone app.

### 4. LARGEST IN CLASS FRESH WATER TANK CAPACITIES

81 gallons in premium fifth wheels, 60 gallons in half-ton series travel trailers and fifth wheels.

### 5. ROAD ARMOR™ SUSPENSION AND PIN BOX (FIFTH WHEELS ONLY)

Equalizes axle load to dampen shock and vibration (fifth wheel only). Also helps to absorb towing shock and reduce the transfer of forces from fifth wheel to truck.

### 6. HEAT & MASSAGE THEATER SEATS

All theater seats are now equipped with heat, massage, and LED accent lights.

### 7. GROUND CONTROL® 3.0 AUTO LEVELING SYSTEM

Leveling jacks automatically level your RV within two minutes, with the touch of a button (most models).

### 8. COUGAR ROOF MOUNT SATELLITE PREP

Eliminates unsightly aftermarket holes, reduces leak points, saves customers time and money during installation and each TV is equipped with direct coaxial connection through KeyTV™ for the best reception possible.

### 9. MORRYDE® STEP ABOVE®

Safe and secure main entry with strut assist.



more product detail at  
[www.keystonerv.com/Cougar](http://www.keystonerv.com/Cougar)

SCAN HERE FOR  
 FULL DETAILS

# COUGAR PREMIUM FW | TOP FEATURES

- All-new Amy Gray Signature Series Driftwood decor
- Roof and side mount satellite prep
- "Quiet" Q-Series ducted A/C system
- Roller shades
- 2" accessory hitch receiver w/ 3,000 lb tow capacity (290RLS, 302RLS, 316RLS)
- AlphaFlex roofing system – w/ 18 year warranty
- PATENTED MaxTurn Technology™ frame and hitch design for unparalleled maneuverability
- PATENTED Hitch Vision™ for faster and easier hook-up
- IN-Command® Generation 3 w/ Global Connect control system gives owners total control over power, slide rooms, awnings, HVAC and more, from a convenient master control panel as well as an enabled smartphone application
- Climate Guard Protection Package: Zero to 110 degree rated, larger heating and cooling units, with in-floor heat ducting, 12V heat pads on holding tanks, racetrack A/C ducting, and increased insulation
- Exceptionally durable and waterproof patent-pending automotive windshield design (select models)
- Ultra-stable and secure entry steps
- Road Armor™ suspension equalizes axle load to dampen shock and vibration
- Road Armor™ pin box - rubberized torsion compound absorbs motion and vibration caused by road shock
- Best-in-class holding tank capacities
- Ground Control® 3.0 auto leveling system
- 50" 4K living room television
- Self-adjusting brakes, reverse taillights and backup/side camera prep
- 35,000 BTU furnace and 15,000 BTU air conditioner
- Dyna Span® seamless floor decking with 25-year warranty
- 2" accessory hitch receiver with 300 lb capacity
- Walkable roof/slide box with rear-wall ladder for easy maintenance
- NEW modern interior styling with raised hardwood cabinetry and hidden hinges
- KeyTV™: A simplified multisource signal controller that distributes satellite, cable, and over-the-air feeds via a single coax cable to every television
- 30" x 50" residential-sized shower with seat (N/A 302RLS, 353SRX, 354FLS, 364BHL)
- Washer/dryer prep standard (most models)

**PATENTED**  
**MAX TURN TECHNOLOGY**

SHORT BED APPROVED

Competition

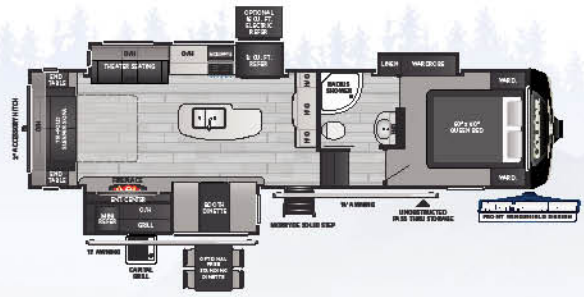
MAX TURN EXPECTED TURNING RADIUS (6'6" TRUCK BED)	
<b>Length of Truck Bed</b>	6' 6"
<b>Standard Fifth Wheel Hitch</b>	83.33°
<b>Sliding Fifth Wheel Hitch</b>	95.66°

EXCLUSIVE 90° PLUS MAXTURN TECHNOLOGY™  
 Frame and hitch design for unparalleled maneuverability.





**NEW!** 290RLS | Rear living, stackable W/D prep, three slides



**302RLS** | Rear living room, three slides, outside kitchen



**NEW!** 316RLS | Double vanity, rear living room, three slides



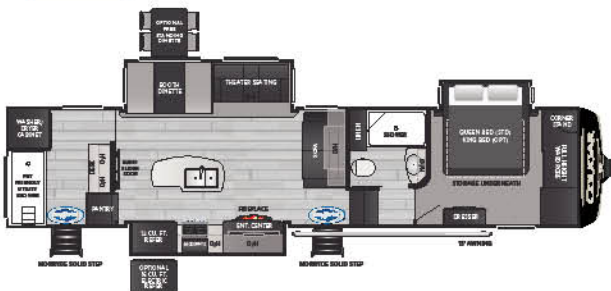
**353SRX** | Rear patio deck, w/ 10' garage



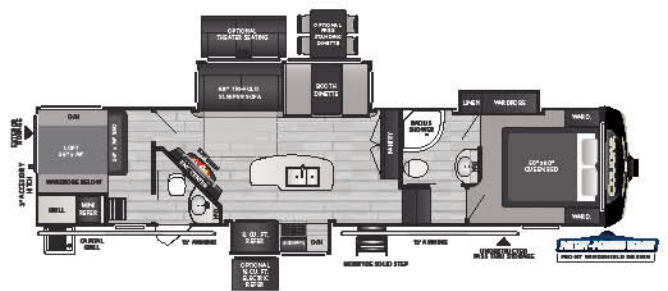
**NEW!** 354FLS | Front living, pull-out rear storage tray



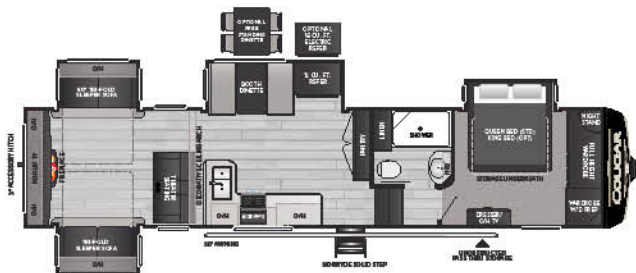
**NEW!** 355FBS | 1 1/2 front bath/rear living, walk-in closet



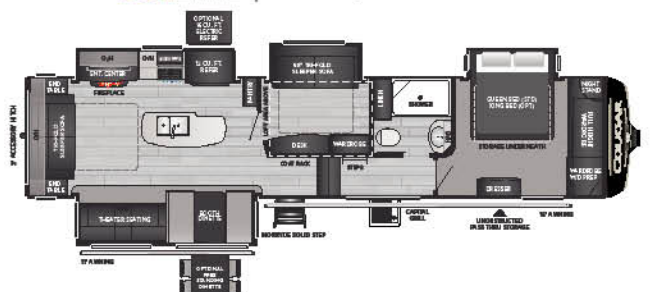
**NEW!** 357UMR | Utility mud room, stackable W/D prep



**364BHL** | 2 bedroom, 1 1/2 bath w/ loft



**366RDS** | Rear den, king bed slide, W/D prep



**368MBI** | Bonus room w/ loft, island kitchen



more product detail at  
[www.keystonerv.com/Cougar](http://www.keystonerv.com/Cougar)

SCAN HERE FOR  
 FULL DETAILS

# COUGAR HALF-TON FW | TOP FEATURES

- All-new Amy Gray Signature Series Driftwood decor
- Roof and side mount satellite prep
- "Quiet" Q-Series ducted A/C system
- Roller shades
- 2" accessory hitch receiver w/ 3,000 lb tow capacity (23MLS, 24RDS, 25RES, 27SGS)
- AlphaFlex roofing system – w/ 18 year warranty
- PATENTED MaxTurn Technology™ frame and hitch design for unparalleled maneuverability
- PATENTED Hitch Vision™ for faster and easier hook-up
- IN-Command® Generation 3 w/ Global Connect control system gives owners total control over power, slide rooms, awnings, HVAC and more, from a convenient master control panel as well as an enabled smartphone application
- Climate Guard Protection Package: Zero to 110 degree rated, larger heating and cooling units, with in-floor heat ducting, 12V heat pads on holding tanks, racetrack A/C ducting, and increased insulation
- Ultra-stable and secure entry steps
- Best-in-class holding tank capacities
- Road Armor™ suspension equalizes axle load to dampen shock and vibration
- Road Armor™ pin box - rubberized torsion compound absorbs motion and vibration caused by road shock
- Upgraded exterior Capital Grill™ BBQ (outside kitchen models)
- Level up Ground Control 3.0 auto leveling system
- 35,000 BTU furnace and 15,000 BTU air conditioner
- 50" 4K living room television ( most models)
- Self-adjusting brakes, reverse taillights and backup/side camera prep
- 2" accessory hitch receiver with 300 lb capacity
- Walkable roof/slide box with rear-wall ladder for easy maintenance
- NEW modern interior styling with raised hardwood cabinetry and hidden hinges
- 30" x 50" residential-sized shower w/seat (N/A 32BHS)

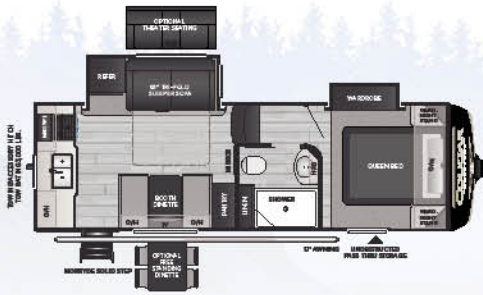
**PATENTED**  
**MAX TURN TECHNOLOGY**

SHORT BED APPROVED

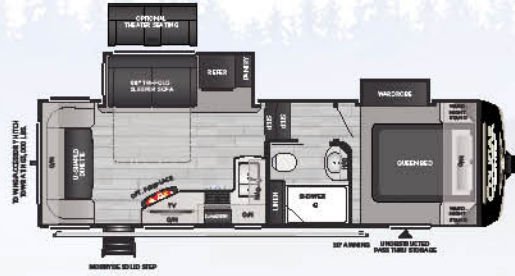
Competition

MAX TURN EXPECTED TURNING RADIUS (6'6" TRUCK BED)	
<b>Length of Truck Bed</b>	6' 6"
<b>Standard Fifth Wheel Hitch</b>	83.33°
<b>Sliding Fifth Wheel Hitch</b>	95.66°

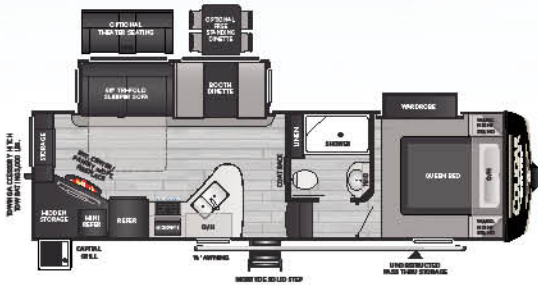
EXCLUSIVE 90° PLUS MAXTURN TECHNOLOGY™  
 Frame and hitch design for unparalleled maneuverability.



**23MLS** | Short, rear kitchen w/ wardrobe slide



**24RDS** | Rear dinette, two slides



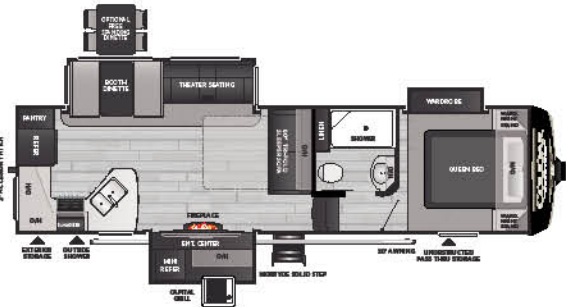
**25RES** | Rear entertainment, outside kitchen



**27SGS** | Spacious rear living, wardrobe slide



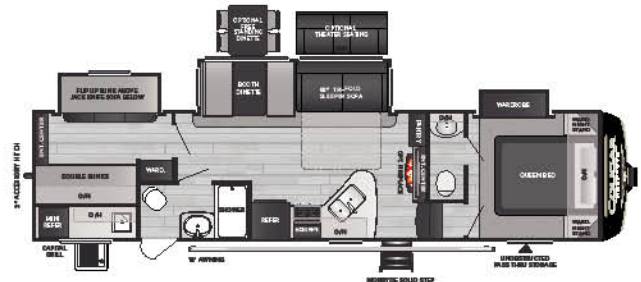
**29MBS** | Mid-bonus room, large kitchen



**29RKS** | Rear kitchen, open concept w/ outside kitchen



**30RLS** | Rear living room, gourmet kitchen



**32BHS** | 1 1/2 bath bunkhouse

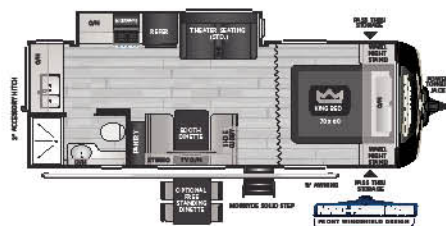


more product detail at  
[www.keystonerv.com/Cougar](http://www.keystonerv.com/Cougar)

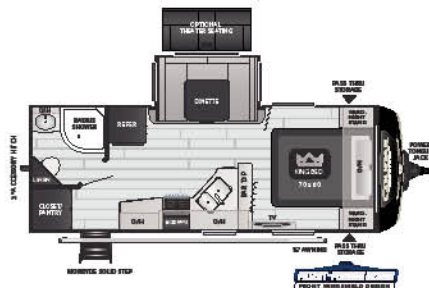
SCAN HERE FOR  
 FULL DETAILS

# COUGAR HALF-TON TT | TOP FEATURES

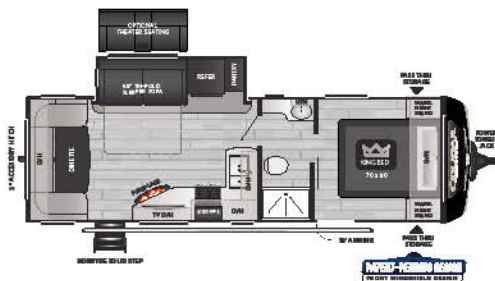
- All-new Amy Gray Signature Series Driftwood decor
- Roof and side mount satellite prep
- HyperDeck™ high-performance water resistant RV floor
- "Quiet" Q-Series ducted A/C system
- Roller shades
- AlphaFlex roofing system – w/ 18 year warranty
- iN-Command® Generation 3 w/ Global Connect control system gives owners total control over power, slide rooms, awnings, HVAC and more, from a convenient master control panel as well as an enabled smartphone application
- Climate Guard protection package – larger heating and cooling units, residential in-floor heat ducting, and increased insulation. Zero-degree rated
- Ultra-stable and secure entry steps
- Upgraded exterior Capital Grill™ BBQ (outside kitchen models)
- 35,000 BTU furnace and 15,000 BTU air conditioner
- 50" living room television on most models
- 70" x 80" standard king bed
- Arched rafters with 84" ceiling height
- 2" accessory hitch receiver with 300 lb capacity
- Exceptionally durable and waterproof patent-pending automotive windshield design (select models)
- Self-adjusting brakes, reverse taillights and backup/side camera prep
- Ground Control 3.0 auto leveling system (N/A 22RBS, 22MLS, 25RDS)
- Walkable roof/slide box with rear-wall ladder for easy maintenance
- KeyTV™ – A simplified multisource signal controller that distributes satellite, cable, and over-the-air feeds via a single coax cable to every television
- NEW modern interior styling with raised hardwood cabinetry and hidden hinges
- Best-in-class holding tank capacities



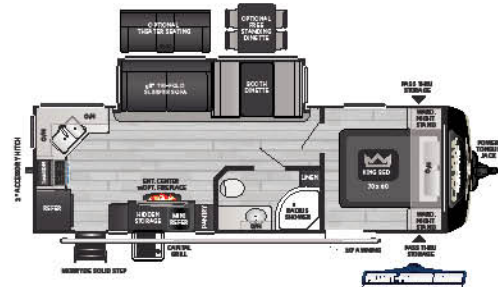
**NEW!** 22MLS | Spacious mid-living, king bed



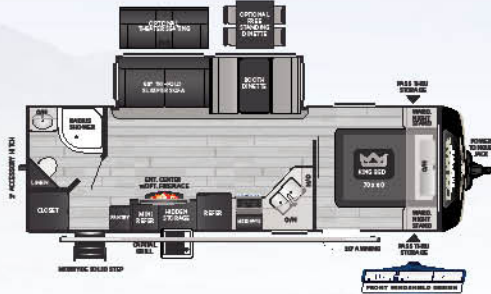
**22RBS** | Spacious, rear bath, large dinette slide



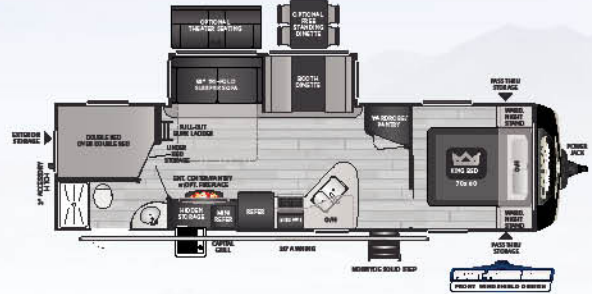
**NEW!** 25RDS | U-shaped dinette, countertop space, private bedroom



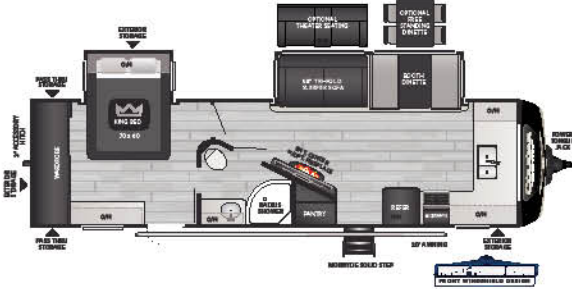
**26RKS** | Rear kitchen, outside kitchen



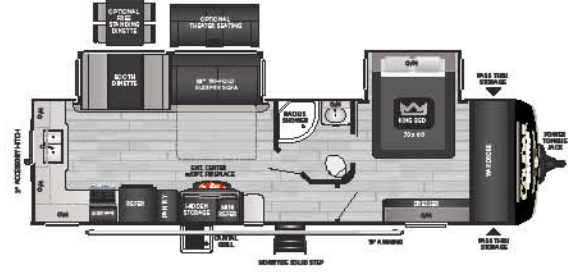
**26RBS** | Rear bath w/ outside kitchen



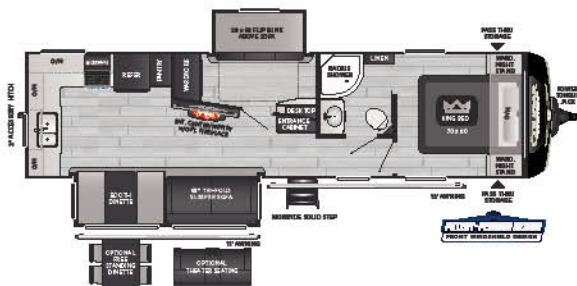
**29BHS** | Double bunkhouse, outside kitchen



**29FKD** | Front kitchen, large private bedroom w/ king bed slide



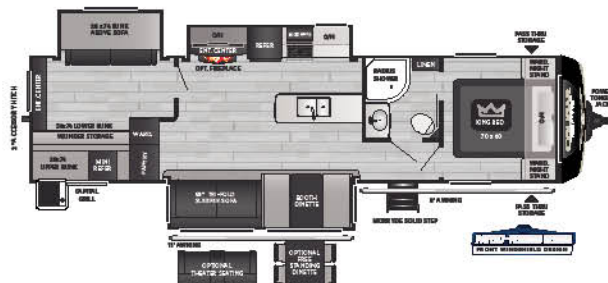
**30RKD** | Rear kitchen, king bed slide w/ large front closet



**31MBS** | Mid bonus room, large kitchen



**32RLI** | Rear living room, king bed slide w/ large front closet



**34TSB** | Three-slide bunkhouse w/ outside kitchen

## PREMIUM FIFTH WHEELS

MODEL	WEIGHT	CARRYING CAPACITY	HITCH WEIGHT	FRESH WATER	WASTE WATER	GRAY WATER	LPG	LENGTH*	HEIGHT 1-A/C	HEIGHT 2-A/C
290RLS	9960	2240	1805	81	38	76	60	33' 9"	12' 2"	13' 4"
302RLS	10175	1985	1765	81	38	76	60	34' 7"	12' 2"	13' 4"
316RLS	10436	1864	10600	81	38	76	60	35' 9"	12' 11"	13' 4"
353SRX	11405	4995	2425	81	38	76	60	35' 9"	12' 11"	13' 4"
354FLS	10865	3135	2570	81	38	76	60	39' 4"	12' 11"	13' 4"
355FBS	TBD	TBD	TBD	81	76	76	60	39' 3"	12' 11"	13' 4"
357UMR	TBD	TBD	TBD	81	76	76	60	39' 4"	12' 11"	13' 4"
364BHL	11277	2723	2200	81	76	76	60	39' 3"	12' 11"	13' 4"
366RDS	11352	2648	2400	81	38	76	60	39' 4"	12' 11"	13' 4"
368MBI	11695	2285	1980	81	38	76	60	39' 4"	12' 11"	13' 4"

## HALF-TON FIFTH WHEELS

MODEL	WEIGHT	CARRYING CAPACITY	HITCH WEIGHT	FRESH WATER	WASTE WATER	GRAY WATER	LPG	LENGTH*	HEIGHT 1-A/C	HEIGHT 2-A/C
23MLS	7116	2884	1335	60	30	60	60	26' 10"	12' 0"	12' 9"
24RDS	7393	2607	1430	60	30	60	60	28' 6"	12' 0"	12' 9"
25RES	7582	2418	1505	60	30	60	60	28' 10"	12' 0"	12' 9"
27SGS	8046	2244	1495	60	30	60	60	31' 4"	12' 0"	12' 9"
29MBS	8898	2102	1630	60	30	60	60	32' 10"	12' 0"	12' 9"
29RKS	8801	1599	1605	60	30	60	60	32' 10"	12' 0"	12' 9"
30RLS	9012	1988	1545	60	30	60	60	33' 6"	12' 7"	12' 11"
32BHS	9336	2164	1570	60	60	60	60	35' 9"	12' 2"	12' 11"

## HALF-TON EASTERN TRAVEL TRAILERS

MODEL	WEIGHT	CARRYING CAPACITY	HITCH WEIGHT	FRESH WATER	WASTE WATER	GRAY WATER	LPG	LENGTH*	HEIGHT
22MLS	5750	1450	645	60	30	30	60	26' 9"	11' 5"
22RBS	5607	1593	630	60	30	30	60	25' 11"	11' 5"
25RDS	6211	2589	6340	60	30	60	60	29' 10"	11' 3"
26RBS	6604	2196	880	60	30	60	60	29' 11"	11' 5"
26RKS	6578	2222	810	60	30	60	60	30' 0"	11' 5"
29BHS	7008	1792	765	60	30	60	60	34' 1"	11' 5"
29FKD	7643	1857	910	60	30	60	60	33' 11"	11' 5"
30RKD	7605	1895	955	60	30	60	60	34' 9"	11' 5"
31MBS	7875	1625	810	60	30	60	60	35' 3"	11' 5"
32RLI	8329	2171	1165	60	30	60	60	35' 11"	11' 4"
34TSB	8563	1937	1150	60	30	60	60	37' 5"	11' 4"

DISCLAIMER: Product information is as accurate as possible as of the date of publication of this brochure. All features, floor plans, and specifications in this brochure are subject to change without notice. Please also consult Keystone's web site at [www.keystonerv.com](http://www.keystonerv.com) for more current product information and specifications. Tow Vehicle Disclaimer. CAUTION: Owners of Keystone recreational vehicles are solely responsible for the selection and proper use of tow vehicles. All customers should consult with a motor vehicle manufacturer or their dealer concerning the purchase and use of suitable tow vehicles for Keystone products. Keystone disclaims any liability or damages suffered as a result of the selection, operation, use or misuse of a tow vehicle. KEYSTONE'S LIMITED WARRANTY DOES NOT COVER DAMAGE TO THE RECREATIONAL VEHICLE OR THE TOW VEHICLE AS A RESULT OF THE SELECTION, OPERATION, USE OR MISUSE OF THE TOW VEHICLE. \*Length is defined as the distance from the centerline of hitch pin/coupler to rear bumper of trailer. Please review owner's manual prior to purchase for more information on service warranties, extended use, towing and maintenance. Owner's manuals can be found at [keystonerv.com](http://keystonerv.com).

## Premium Fifth Wheels

### CAMPING IN STYLE PACKAGE

Laminated side walls with 5 sided aluminum superstructure  
 Painted fiberglass front cap with HitchVision™ and LED lights  
 Amy Gray Signature Series décor  
 Cabinet doors with residential hardware  
 12,000 BTU rapid recovery 6-gallon gas/electric water heater  
 Aluminum wheels and full size spare tire  
 Battery disconnect switch  
 LED interior and exterior lighting  
 MORryde® Step Above on main entry®  
 Friction hinge entry door

### COUGAR ANNIVERSARY PACKAGE

12 cu. ft. refrigerator (N/A 353SRX)  
 1.6 cu. ft. microwave  
 Washer/dryer prep (N/A 302RLS, 353SRX, 364BHL)  
 21" Furrion® range w/ Piezo ignition and glass stovetop cover  
 LG® solid surface countertop and stainless steel undermount kitchen sink w/ chef's faucet sprayer  
 Upgraded Road Armor™ equalizer and pin box  
 2" accessory hitch with 300 lb capacity  
 2" accessory hitch receiver w/ 3,000 lb tow capacity (290RLS, 302RLS, 316RLS)

### COUGAR COMFORT PACKAGE

15,000 BTU ducted air conditioner  
 50 AMP electric, pre-wired and braced for ducted bedroom A/C option  
 35K BTU ducted furnace  
 Dual 30 lb LP tanks  
 1,000 CFM four-speed "Fantastic Fan" exhaust fan with rain sensor and wall-mounted controls in kitchen

### DELUXE ENTERTAINMENT/ TECHNOLOGY PACKAGE

50" 4K Ultra HDTV in living area  
 12V AM/FM/CD/DVD/MP3/Bluetooth player with HDMI ARC control  
 Omni-directional digital TV antenna and WiFi prep  
 Exterior TV hookup

5,500 BTU electric fireplace with thermostat control and remote  
 Furrion® backup-observation/side camera prep

12 Volt USB charging centers

### CLIMATE GUARD PROTECTION PACKAGE

Astrofoil insulated slide floors and underbelly  
 Reflective foil insulated front cap  
 Forced-air heated and enclosed underbelly  
 12V heat pads on holding tanks  
 Heated and enclosed dump valves and convenience center  
 Dual attic vents

### SMART CAMPING

iN-Command® Pro Series Gen. 3 with Global Connect  
 4G LTE and Wi-Fi prep  
 Cougar "Off the Grid" roof and side-mounted solar and inverter prep

### OPTIONS

Second power awning (N/A 353SRX, 354RLS, 357UMR, 366RDS)  
 13.5K BTU ducted bedroom A/C with thermostat (mandatory 353SRX)  
 70" x 80" king bed (N/A 302RLS, 307RES, 353SRX, 364BHL)  
 Free-standing dinette and chairs (N/A 353SRX)  
 Dual-pane frameless windows  
 Theater seat IPO tri-fold sofa (364BHL Only)  
 Cougar "Off the Grid" solar camping package (MANDATORY 353SRX)  
 Ramp door patio package (MANDATORY 353SRX only)  
 Slide topper package  
 16 cu. ft. residential refrigerator w/ 2,000 watt inverter  
 CSA construction and seal

## Half-Ton Fifth Wheels

### CAMPING IN STYLE PACKAGE

Laminated side walls with 5 sided aluminum superstructure  
 3/8" walkable roof decking  
 Painted fiberglass front cap with HitchVision™ and LED lights  
 Amy Gray Signature Series décor  
 Cabinet doors with residential hardware  
 12,000 BTU rapid recovery 6-gallon gas/electric water heater  
 Aluminum wheels and full size spare tire  
 Battery disconnect switch  
 LED interior and exterior lighting  
 MORryde® Step Above on main entry®  
 Friction-hinge entry door

### HALF TON FW ANNIVERSARY PACKAGE

8 cu. ft. refrigerator  
 0.9 cu. ft. microwave  
 21" Furrion® range w/ Piezo ignition and glass stovetop cover  
 Foil-wrapped seamless galley and lavatory counter tops  
 Stainless steel undermount kitchen sink with chef's faucet and sprayer  
 2" accessory hitch with 300 lb capacity  
 2" accessory hitch receiver w/ 3,000 lb tow capacity (23MLS, 24RDS, 25RES, 27SGS)

### HALF TON FW COMFORT PACKAGE

15,000 BTU ducted air conditioner  
 50 AMP electric, pre-wired and braced for ducted bedroom A/C option  
 35K BTU ducted furnace  
 Dual 30 lb LP tanks

### DELUXE ENTERTAINMENT/ TECHNOLOGY PACKAGE

50" 4K Ultra HDTV in living area (most models)  
 12V AM/FM/CD/DVD/MP3/Bluetooth player with HDMI ARC control  
 Omni-directional digital TV antenna and WiFi prep  
 Exterior TV hookup  
 5,500 BTU electric fireplace with thermostat control and remote  
 Furrion® backup-observation/side camera prep

12 Volt USB charging centers

### CLIMATE GUARD PROTECTION PACKAGE

Astrofoil insulated slide floors and underbelly  
 Reflective foil insulated front cap  
 Forced-air heated and enclosed underbelly  
 12V heat pads on holding tanks  
 Heated and enclosed dump valves and convenience center  
 Dual attic vents

### SMART CAMPING

iN-Command® Pro Series Gen. 3 with Global Connect  
 4G LTE and Wi-Fi prep  
 Cougar "Off the Grid" roof and side-mounted solar and inverter prep

### OPTIONS

Electric, four-point leveling system (MANDATORY)  
 Second power awning (MANDATORY 29MBS, 30RLS; N/A all other models)  
 Dual-pane frameless windows  
 13.5K BTU ducted bedroom A/C  
 Fireplace (MANDATORY 29MBS, 30RLS; N/A 23MLS)  
 Free-standing dinette and chairs (N/A 24RDS)  
 Theater seat IPO tri-fold (23MLS, 24RDS, 25RES, 29MBS, 32BHS Only)  
 Cougar "Off the Grid" solar camping package  
 Slide topper package  
 12V 10 cu. ft. refrigerator  
 CSA construction and seal

## Half-Ton Travel Trailers

### CAMPING IN STYLE PACKAGE

Laminated side walls with 5 sided aluminum superstructure  
 3/8" walkable roof decking  
 Painted fiberglass front cap with HitchVision™ and LED lights  
 Amy Gray Signature Series décor  
 Cabinet doors with residential hardware  
 12,000 BTU rapid recovery 6-gallon gas/electric water heater  
 Aluminum wheels and full size spare tire  
 Battery disconnect switch  
 LED interior and exterior lighting  
 MORryde® Step Above on main entry®  
 Friction-hinge entry door

### HALF TON TT ANNIVERSARY PACKAGE

8 cu. ft. or 10 cu. ft. 12V refrigerator  
 0.9 cu. ft. microwave  
 21" Furrion® range w/ Piezo ignition and glass stovetop cover  
 Foil-wrapped seamless galley and lavatory countertops  
 Gourmet stainless steel undermount kitchen sink with upgraded chef's faucet and sprayer  
 2" accessory hitch with 300 lb capacity

### HALF TON TT COMFORT PACKAGE

15,000 BTU ducted air conditioner  
 35K BTU ducted furnace  
 Dual 30 lb LP tanks

### DELUXE ENTERTAINMENT/ TECHNOLOGY PACKAGE

50" 4K Ultra HDTV in living area (most models)  
 12V AM/FM/CD/DVD/MP3/Bluetooth player with HDMI ARC control  
 Omni-directional digital TV antenna and WiFi prep  
 Exterior TV hookup  
 5,500 BTU electric fireplace with thermostat control and remote  
 Furrion® backup-observation/side camera prep

12 Volt USB charging centers

### CLIMATE GUARD PROTECTION PACKAGE

Astrofoil insulated slide floors and underbelly  
 Reflective foil insulated front cap  
 Forced-air heated and enclosed underbelly  
 12V heat pads on holding tanks  
 Heated and enclosed dump valves  
 Dual attic vents

### SMART CAMPING

iN-Command® Pro Series Gen. 3 with Global Connect  
 4G LTE and Wi-Fi prep  
 Cougar "Off the Grid" roof and side-mounted solar and inverter prep

### OPTIONS

Electric rear stabilizer jacks (MANDATORY, 22MLS, 22RBS, 25RDS)  
 Automatic leveling system (MANDATORY N/A 22MLS, 22RBS, 25RDS)  
 Second power awning (MANDATORY 31MBS, 32RLI, 34TSB, N/A all other models)  
 Dual-pane frameless windows  
 13.5K BTU ducted bedroom A/C (N/A 22MLS, 22RBS)  
 50 amp service/wire and brace for 2nd A/C MANDATORY (N/A 22MLS, 22RBS)  
 Fireplace (N/A 22MLS, 22RBS)  
 Free standing dinette and chairs (N/A 22RBS, 25RDS)  
 Theater seat IPO tri-fold (N/A 22RBS, 32RLI)  
 Theater seats IPO dinette (22RBS ONLY)  
 Cougar "Off the Grid" solar camping package  
 Slide topper package  
 12V 10 cu. ft. refrigerator  
 CSA construction and seal

# BUILT FOR THE LONG HAUL



## 1 EASIER SHOPPING.

At Keystone, we make choosing an RV as easy as finding the Big Dipper on a dark summer night. With comprehensive online product information, Key Connect™ product advisors, and an unparalleled dealer network, we will help you select the perfect RV for your family's adventure.

## 2 INNOVATIVE THINKING.

The road's a nicer place when you have the industry's smartest features behind you. Keystone leads the pack in patented innovations that make our RVs safer, more comfortable, and easier to operate.

## 3 LONG HAUL QUALITY.

To keep you on the road, there are certain things we just won't build a Keystone RV without. Game-changing features like our Unified Wiring Standard, Tru-Fit™ five-point slide construction, and no-fail Tuf-Lok™ A/C duct joiners combined with exhaustive testing and inspections are some of the reasons why Keystone is able to offer our owners the industry's best 3-year limited structural warranty.

## 4 WORRY-FREE CUSTOMER SERVICE.

Wherever the road takes you, you're never too far from an authorized Keystone service center. We also offer live service assistance, ultra-fast parts shipping, online maintenance tips and tricks, and a single-point warranty claims policy. *That's* peace of mind.

## 5 KEYSTONE NATION.

When you choose Keystone, you become a part of one of the largest camping families in the country. We're Keystone Nation. A friendly community where people share photos, travel tips and amazing stories — all in the spirit of camaraderie and adventure. Come join us.