

WARRANTY FOR
FULL TIME RVING*

REFERENCE KEYSTONE RV COMPANY OWNERS MANUAL FOR LIMITED WARRANTY DETAILS

FULL PROFILE FIFTH WHEELS

keystonerv.com/avalanche

AVALANCHE



The ultimate
ownership experience.

The ultimate ownership experience.

The goal of Keystone RV Company is to surprise and delight our owners at each and every touchpoint. We're happy when our campers are happy, and we are committed to providing the very best ownership experience in the industry.



**Keystone RV
Company**

1 EASIER SHOPPING.

At Keystone, we make choosing an RV as easy as finding the Big Dipper on a dark summer night. With comprehensive online product information, Key Connect™ product advisors, and an unparalleled dealer network, we will help you select the perfect RV for your family's adventure.

2 INNOVATIVE THINKING.

The road's a nicer place when you have the industry's smartest features behind you. Keystone leads the pack in patented innovations that make our RVs safer, more comfortable, and easier to operate.

3 LONG HAUL QUALITY.

To keep you on the road, there are certain things we just won't build a Keystone RV without. Game-changing features like our Unified Wiring Standard, Tru-Fit™ five-point slide construction, and no-fail Tuf-Lok™ A/C duct joiners combined with exhaustive testing and inspections are some of the reasons why Keystone is able to offer our owners the industry's best 3-year limited structural warranty.

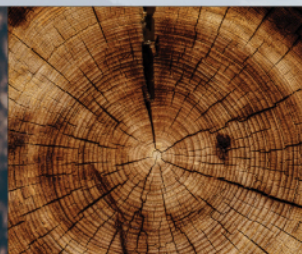
4 WORRY-FREE CUSTOMER SERVICE.

Wherever the road takes you, you're never too far from an authorized Keystone service center. We also offer live service assistance, ultra-fast parts shipping, online maintenance tips and tricks, and a single-point warranty claims policy. *That's* peace of mind.

5 KEYSTONE NATION.

When you choose Keystone, you become a part of one of the largest camping families in the country. We're Keystone Nation. A friendly community where people share photos, travel tips and amazing stories – all in the spirit of camaraderie and adventure. Come join us.

Experience the Avalanche lifestyle by visiting [#keystoneavalanche](#)



AVALANCHE

LUXURY HAS MET ITS MATCH



FULL PROFILE FIFTH WHEELS

Live large for less.

Avalanche leads the industry in full-size construction, elaborate comfort, entertainment and value for extended-stay camping. Its unique wide-body design with high ceilings and frameless panoramic windows offers the kind of spacious living areas, and bedrooms that make campers wonder why they would ever settle for anything less.

Keystone EXCLUSIVE Innovations

Year after year, Keystone RV's experienced team delivers Built For the Long Haul quality you expect and exclusive innovations you won't find anywhere else.



**3-year Limited Structural Warranty,
1-year Limited Base Warranty**

Every new Keystone RV comes with the industry's best three-year limited structural warranty AND a one-year limited base warranty. Ask your dealer, visit keystonerv.com, or call Keystone Owner Relations for details.



4G LTE and Wi-Fi Prep

All Avalanches are equipped with a new antenna that integrates 4G LTE and Wi-Fi with standard VHF/UHF/AM/FM reception.



KeyTV™

No more connection guesswork or poor reception. KeyTV offers a game-changing, single point of control of over-the-air, cable, and satellite feeds. Visit us online for more information.



Color-Coded Wiring Standard

Easy-to-trace circuits simplify electrical and entertainment system troubleshooting.



Hitch Vision™

Simplifies hitch hook-up with "no looking back" convenience.



In-floor Heating Ducts

Distributes heat evenly for greater comfort.



Road Armor™ Suspension

Equalizes axle load to dampen shock and vibration.



Tru-Fit™ Slide Construction

A more durable slide room design that minimizes functional motor and structural stress, resists leaking.

Room to Relax

Wide-body construction allowing for large, luxury features that make you feel right at home.



Furrion® Stove & Oven

Furrion's two-in-one range/oven combination features stainless steel exterior, glass oven door, and self-lighting oven.



Oversized Pass-Through Storage

Approximately 145 cu ft of pass-through storage with no-skid rubber diamond plate flooring.



Polar Pack All Season Protection

Exclusive all season Polar Pack protection allows you to camp in nearly any condition.



One Touch 6-point Level-Up System

Leveling jacks automatically level your RV within two minutes simply with the touch of a button.



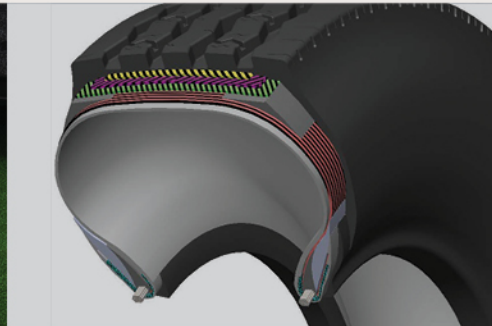
18 cu. ft. Stainless Steel Refrigerator

Bigger than others in its class, allowing you to stock up without sacrifice. Available in RV or residential versions.



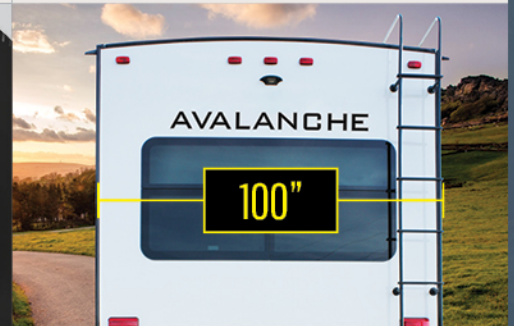
SolidStep® by Lippert Components

Simple and easy to operate. Provides a sturdy and secure entry and exit.



Heavy Duty G-rated Tires

Upgraded, higher-ply tires for maximum towing security and confidence. 6-year limited warranty w/2-year road side assistance.



100" Wide-Body Construction

Wide-body construction adds 4" additional living space in hallways, bedrooms and bathrooms.



Summit Slides with Expansive Windows

Tall slides that challenge the competition with oversized windows and panoramic views.



Stackable Washer and Dryer Prep

Bring along a washer and dryer for the long haul. Every model comes prepped and ready for a stackable unit.

Durability and Convenience

Built for long-term travel with G-rated tires, 7,000 lb. capacity axles and innovations to keep your journey stress free.



more product detail at
www.keystonerv.com/avalanche



Luxury has met its match.

Not only is Avalanche built for extreme comfort and convenience, it is built to impress. In addition to three new floorplans, we have brightened up the exterior with all-new handsome black, gray and white color styling. The new automotive-inspired logo, graphics and front cap make Avalanche a show stopper. We have re-vamped our interior design across the lineup, including two new décor options with modern colorways complemented with tweed and subtle geometric fabrics. Inside, beautiful satin nickel lighting with modern Edison bulbs, streamlined valances with wood accents, and a gorgeous headboard with nailhead trim deliver the refined look campers expect from a luxury fifth wheel, but at a more enticing price point.

Inspired Décor

Avalanche is designed with you in mind. Our goal is to provide the best of the best – all so you feel right at home.



Wide-Body Construction

Spacious 100" construction allowing for maximized storage throughout and plenty of room for the whole family.





more product detail at
www.keystonerv.com/Avalanche

Avalanche

FULL-PROFILE FIFTH WHEELS

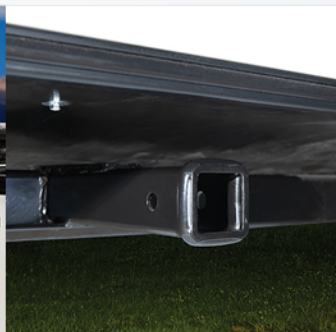
- Stunning solid-wood cabinet doors, drawer fronts and slide fascia
- Furrion® recessed range with glass cover and stainless steel storage drawer
- 30" microwave
- 18 cu ft refrigerator, standard
- KeyTV™ Keystone's revolutionary single-source, easy-to-use controller for over-the-air, cable and satellite television
- Cordless MCD night roller shades provide superior insulation, clear views and privacy during the day, and nighttime blackout coverage
- Stackable washer and dryer prep, standard
- Summit slide rooms with 6' 10" interior height
- Two panoramic 5' x 4' slide box windows
- Spacious 100" wide-body construction
- 70" x 80" king-size beds
- Dual Quiet Cool air conditioners (15,000 BTU and 13,500 BTU standard)
- EXCLUSIVE all-season Polar Pack protection allows you to camp in nearly any condition.
- 145 cu. ft. heated basement storage
- 12-gallon water heater with more than 16-gallon recovery per hour
- 2" receiver hitch with 300 lb capacity
- High-gloss gel coat exterior
- Six-point hydraulic auto-leveling system
- EXCLUSIVE Road Armor™ suspension equalizes axle load to dampen shock and vibration
- G-rated tires and 7,000 lb capacity axles
- Quad Solid Step™ by Lippert Components for added safety
- Automotive-style frameless windows for better performance and eye appeal



Hardwood Cabinet Doors
Avalanche cabinetry features solid wood doors and drawers for building a sturdier kitchen.



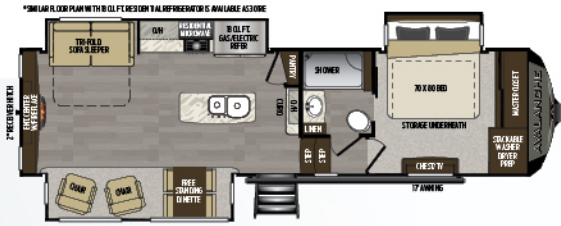
Dual Quiet Cool Air Conditioners
High-capacity 15,000 BTU and 13,500 BTU units, standard on every Avalanche.



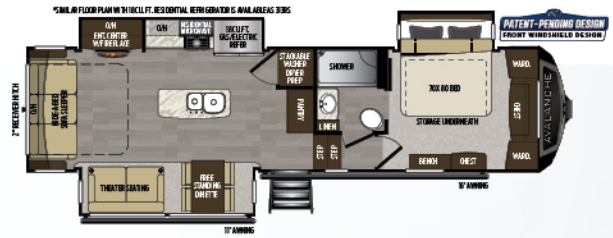
2" Accessory Receiver Hitch
Every Avalanche comes standard with a 300 lb carrying capacity receiver hitch. Perfect for use with any accessory approved for RV use. Check accessory owner's manual.



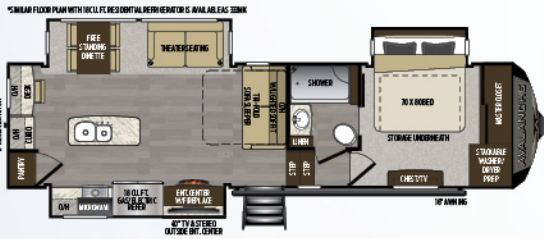
Automotive Grade Painted Fiberglass Front Cap
Avalanche caps include Keystone's exclusive KeyGuard™ protective coating, designed to provide chip and rock protection.



300RE/301RE | Rear entertainment, triple-slide, king bed
Weight: 11376 lbs | Length: 34' 1"



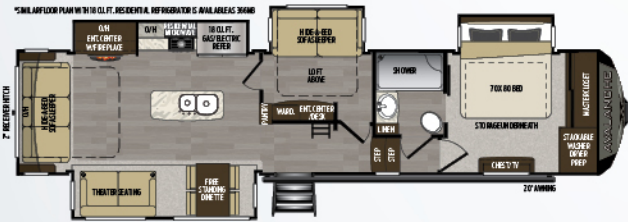
312RS/313RS | Rear living room, triple slide, king bed
Weight: 11520 lbs | Length: 34' 11"



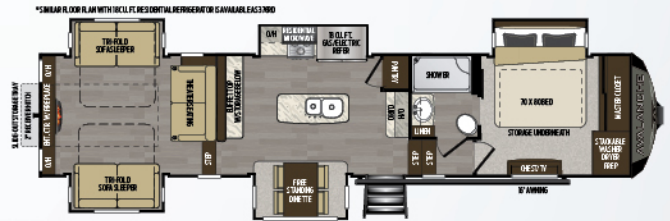
332MK/333MK | Mid-kitchen, triple slide w/desk
Weight: 11410 lbs | Length: 34' 4"



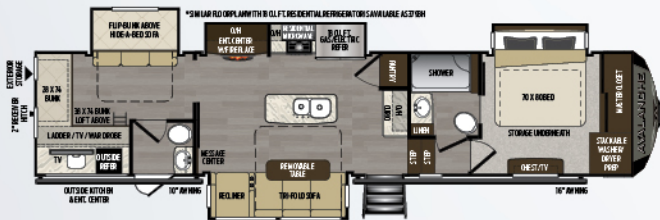
338GK/339GK | Rear living, bar stools, king bed
Weight: 12350 lbs | Length: 37' 12"



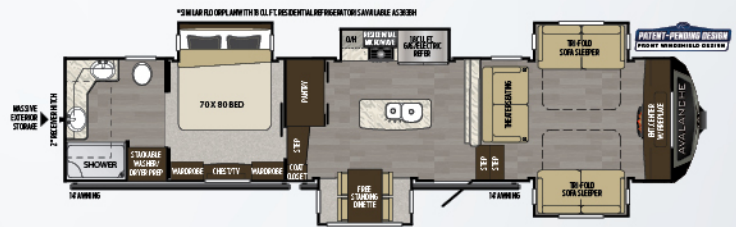
365MB/366MB | Center bonus room w/loft
Weight: 12970 lbs | Length: 39' 5"



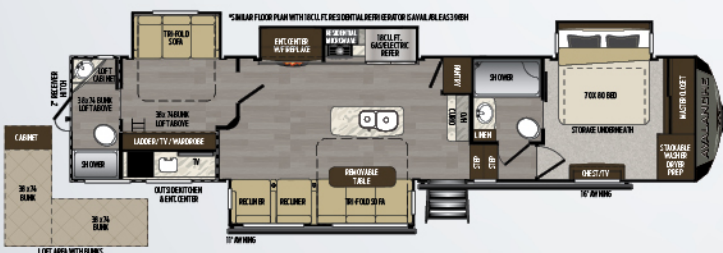
375RD/376RD | Rear den, five slides, massive storage tray
Weight: 13424 lbs | Length: 40' 8"



378BH/379BH | 1/2 bath, bunkhouse w/outside kitchen
Weight: 13616 lbs | Length: 40' 8"



382FL/383FL | Rear master retreat, front living
Weight: 13487 lbs | Length: 41' 6"



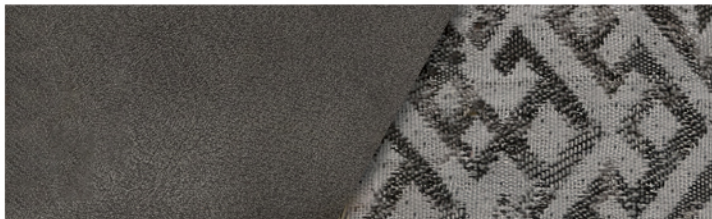
395BH/396BH | 2 full bathroom bunkhouse, loft, outside kitchen
Weight: 13878 lbs | Length: 41' 7"

FULL-PROFILE FIFTH WHEELS

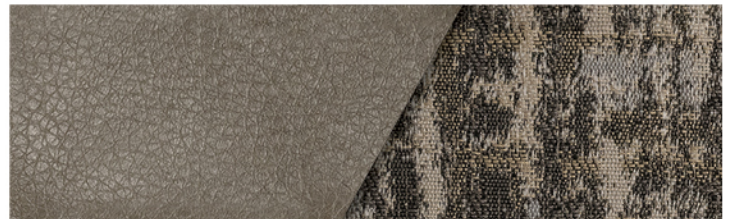
MODEL	WEIGHT	CARRYING CAPACITY	HITCH WEIGHT	FRESH WATER	WASTE WATER	GRAY WATER	LPG	LENGTH*	HEIGHT	HEIGHT	AWNING
300RE	11376	3624	2365	66	49	83	60	34'	8' 4"	13' 2"	17'
301RE	11339	3661	2395	66	49	83	60	34'	8' 4"	13' 2"	17'
312RS	11520	3480	2575	66	49	83	60	34' 11"	8' 4"	13' 1"	16'/11'
313RS	11520	3480	2575	66	49	83	60	34' 11"	8' 4"	13' 1"	16'/11'
332MK	11338	3662	2390	66	49	83	60	34' 3"	8' 4"	13' 2"	16'
333MK	11410	3590	2390	66	49	83	60	34' 3"	8' 4"	13' 2"	16'
338GK	12350	3150	2700	66	49	83	60	37' 11"	8' 4"	13' 2"	19'/11'
339GK	12350	3150	2700	66	49	83	60	37' 11"	8' 4"	13' 2"	19'/11'
365MB	12970	2530	2730	66	49	83	60	39' 4"	8' 4"	13' 2"	20'
366MB	12958	2542	2690	66	49	83	60	39' 4"	8' 4"	13' 2"	20'
375RD	13424	2576	2475	66	49	83	60	40' 7"	8' 4"	13' 4"	16'
376RD	13430	2570	2430	66	49	83	60	40' 7"	8' 4"	13' 4"	16'
378BH	13616	2884	2820	66	83	117	60	40' 7"	8' 4"	13' 4"	16'/10'
379BH	13586	2914	2820	66	83	117	60	40' 7"	8' 4"	13' 4"	16'/10'
382FL	13487	3013	2815	66	44	78	60	41' 5"	8' 4"	13' 4"	14'/14'
383FL	13490	3010	2815	66	44	78	60	41' 5"	8' 4"	13' 4"	14'/14'
395BH	13878	2622	2760	66	93	127	60	41' 6"	8' 4"	13' 4"	16'/11'
396BH	13884	2616	2715	66	93	127	60	41' 6"	8' 4"	13' 4"	16'/11'

DISCLAIMER: Product information is as accurate as possible as of the date of publication of this brochure. All features, floor plans, and specifications in this brochure are subject to change without notice. Please also consult Keystone's web site at www.keystonerv.com for more current product information and specifications. Tow Vehicle Disclaimer. CAUTION: Owners of Keystone recreational vehicles are solely responsible for the selection and proper use of tow vehicles. All customers should consult with a motor vehicle manufacturer or their dealer concerning the purchase and use of suitable tow vehicles for Keystone products. Keystone disclaims any liability or damages suffered as a result of the selection, operation, use or misuse of a tow vehicle. KEYSTONE'S LIMITED WARRANTY DOES NOT COVER DAMAGE TO THE RECREATIONAL VEHICLE OR THE TOW VEHICLE AS A RESULT OF THE SELECTION, OPERATION, USE OR MISUSE OF THE TOW VEHICLE. *Length is defined as the distance from the centerline of hitch pin/coupler to rear bumper of trailer. Please review owner's manual prior to purchase for more information on service warranties, extended use, towing and maintenance. Owner's manuals can be found at keystonerv.com.

DÉCOR OPTIONS



STANTON



CLARIDGE



more product detail at
www.keystonerv.com/Avalanche

STANDARDS AND OPTIONS

EXTERIOR

Road Armor™ shock absorbing hitch pin
 Side and rear observation camera prep
 Solar prep
 G-rated tires w/6 year warranty and 2 year road side assistance
 2" receiver hitch w/300 lb. capacity
 "No Sweat" vented attic system
 10" beams with Z-frame technology (some models 12")
 50 AMP service with detachable power cord
 Hydraulic selector valves for slide-outs
 Max Turn Technology™ high-gloss fiberglass front cap w/ Hitch Vision™ backup mirror
 6-point hydraulic auto level up system
 Tinted 80% safety glass windows
 Rear ladder w/fully walkable roof
 Super-size 6' 4" tall, 30" wide entry doors
 Dual pane windows (optional)
 Generator prep (optional)

ALL-IN-ONE "WATER WORKS" EXTERIOR UTILITY CENTER

KeyTV™ multisource TV control system
 Easy siphon winterization system
 Water heater bypass
 Enclosed low point drain valves
 Ducted heat for cold weather protection
 Dump valves (most models)
 Black tank spray hookup
 Hot and cold high pressure water hose with quick disconnect

ROAD ARMOR™ SUSPENSION

Improved impact absorption
 Improved axle equalization
 Greasable wet bolts (8)
 Long lasting 1/2" steel shackle plates
 Long lasting bronze bushings

INTERIOR

Heavy duty ball bearing drawer guides
 Extra deep, fully extendable drawers
 Solid surface countertops
 Solid surface sink cover
 Stainless steel, extra deep sink with dual bowls
 High-rise, single-lever kitchen faucet
 Maximized kitchen storage w/ more drawers and pantry space
 Ceiling fan
 LP leak detector

INTERIOR (CONTINUED)

40" designer fireplace with decorative surround
 Power theater seats featuring heat and massage
 "One Place Command Center" centrally located operational switches & gauges
 Translucent glass shower door and massaging shower head
 Shower skylight
 Porcelain foot flush toilet
 Cross ventilation bedroom windows (where available)
 18 cu. ft. residential refrigerator (mandatory on 30IRE, 313RS, 333MK, 3396K, 366MB, 376RD, 379BH, 383FL, 396BH)

PACKAGES

UPGRADED APPLIANCE

30" microwave
 12-gallon DSI 2-way water heater
 35,000 BTU furnace
 18 cu. ft. gas/electric refrigerator
 High output range w/22" oven

BEST CAMP COLLECTION

Solid wood cabinet doors, drawers, and hardwood fascia
 Solid surface kitchen countertops and flush mounted sink covers
 Huge 50" LED TV
 12V AM/FM/CD/DVD home theater system w/surround sound effect speakers
 KeyTV™ multisource TV/satellite control system
 Stackable washer and dryer prep (all models)
 Therma-Shield R37 triple insulated, ducted and heated holding tanks
 Drop frame technology
 Class A bus-style latch slam baggage doors
 Heavy duty, Dexter® E-Z Lube® 7000 lb. axles
 One-touch electric awning w/ adjustable arms
 Aluminum wheels

COMFORT

100" Wide-body width with upgrade construction
 Summit slides with super-sized windows
 Frameless windows
 Hidden hinge cabinets
 MCD roller night shades
 48" x 30" walk-in fiberglass shower
 Fantastic fan (kitchen)
 Quad Solid Step by Lippert Components for added safety

BUILT FOR THE LONG HAUL



PRINT 12.2019

