

# ZINGER



**CROSSROADS**<sup>™</sup>  
*Recreational Vehicles*

\*LITE MODELS

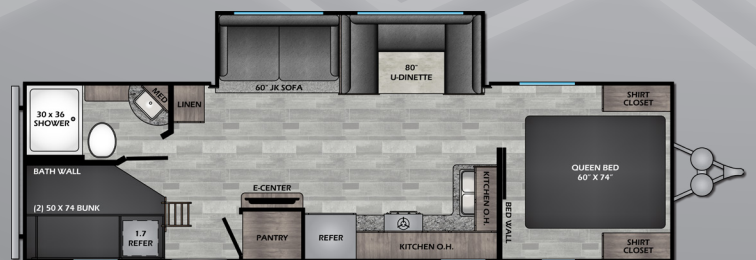
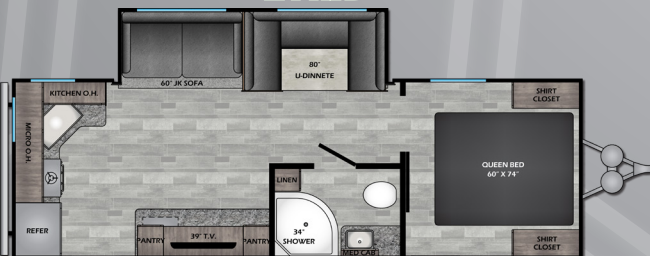
\*STANDARD MODELS

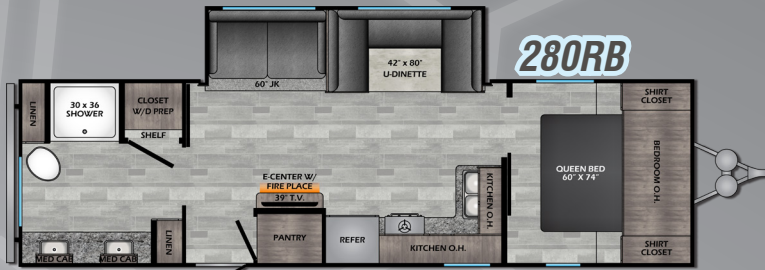
MODEL	DRY WT.	GVWR	HITCH	FRESH	BLACK	GRAY	CC	LENGTH	HEIGHT
ZR-18BH	3246	4520	520	27 Gal	30 Gal	30 Gal	1274	21' 11"	9' 7"
ZR-18BS	3694	4490	496	27 Gal	30 Gal	30 Gal	796	22' 6"	9' 7"
ZR-18RD	3290	4520	524	27 Gal	30 Gal	30 Gal	1230	21' 6"	9' 7"
ZR-18RK	3410	4470	476	27 Gal	30 Gal	30 Gal	1060	22' 6"	9' 7"
ZR-18DS	4350	5700	606	43 Gal	30 Gal	30 Gal	1340	22' 6"	10' 3"
ZR-211RD	4364	6500	552	43 Gal	30 Gal	30 Gal	2136	25' 2"	10' 5"
ZR-229BH	4684	7600	608	43 Gal	30 Gal	30 Gal	2916	26' 11"	10' 5"
ZR-229RB	5510	7600	730	51 Gal	39 Gal	78 Gal	2090	26' 9"	10' 5"
ZR-249RK	5974	7600	748	51 Gal	39 Gal	78 Gal	1626	28' 11"	11' 2"
ZR-252BH	5003	7560	564	43 Gal	30 Gal	30 Gal	2557	28' 11"	10' 5"
ZR-270BH	5988	7730	738	51 Gal	39 Gal	39 Gal	1742	31' 11"	11' 2"
ZR-280BH	6477	9480	680	51 Gal	39 Gal	78 Gal	3003	32' 6"	11' 2"
ZR-280RB	6580	9660	864	51 Gal	39 Gal	78 Gal	3080	32' 6"	11' 2"
ZR-280RK	6660	9610	808	51 Gal	39 Gal	78 Gal	2950	32' 11"	11' 2"
ZR-290KB	6619	9670	868	51 Gal	39 Gal	39 Gal	3051	33' 6"	11' 2"
ZR-292RE	7117	9600	802	51 Gal	39 Gal	39 Gal	2483	33' 6"	11' 2"
ZR-298BH	6814	9620	828	51 Gal	78 Gal	78 Gal	2806	33' 11"	11' 2"
ZR-299RE	6944	9710	914	51 Gal	39 Gal	78 Gal	2766	33' 11"	11' 2"
ZR-320FB	7600	9840	1040	51 Gal	39 Gal	39 Gal	2240	35' 11"	11' 3"
ZR-328SB	7756	9740	942	51 Gal	39 Gal	39 Gal	1984	36' 6"	11' 3"
ZR-330BH	7916	9800	1004	51 Gal	78 Gal	39 Gal	1884	37' 6"	11' 3"
ZR-331BH	8601	10400	1208	51 Gal	78 Gal	39 Gal	1799	37' 6"	11' 3"
ZR-333DB	8214	10400	904	51 Gal	78 Gal	39 Gal	2186	37' 7"	11' 3"
ZR-340BH	9074	11420	1222	51 Gal	39 Gal	78 Gal	2346	38' 0"	11' 3"
ZR-340RE	8714	11250	1058	51 Gal	39 Gal	78 Gal	2536	38' 0"	11' 3"

SINGLE AXLE UNITS

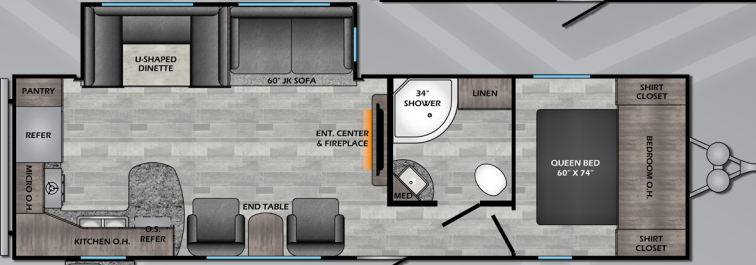


www.crossroadsrv.com • (260) 593 - 3850

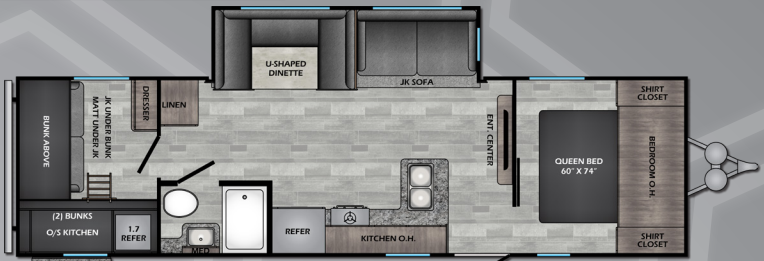




**280RB**



**280RK**



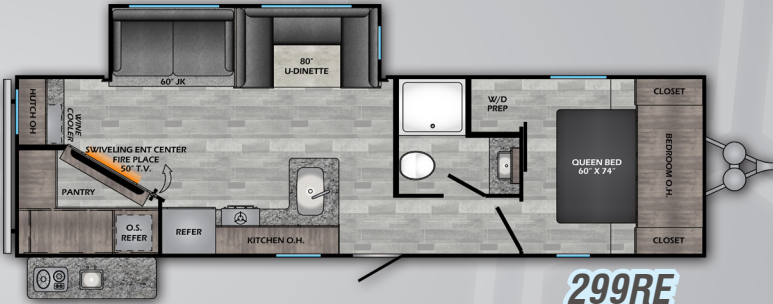
**290KB**



**292RE**



**298BH**



**299RE**



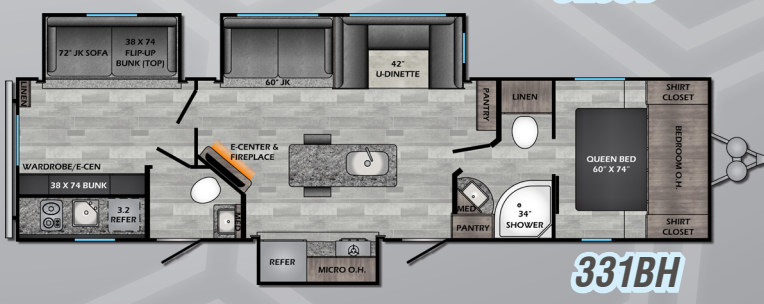
**320FB**



**328SB**



**330BH**



**331BH**



**333DB**



**340BH**



**340RE**

# STANDARDS & OPTIONS

## STANDARDS

### LIVING ROOM

- Designer Valances
- Storage Doors Below Booth Dinette (N/A Zinger Lite)
- Three Decor Options
- Wood Slide-Out Fascia
- AM/FM Stereo System w/ Bluetooth Soundbar
- Pleated Shades
- Flush Floor Slide-Out w/ Large Dinette Windows
- Sleeper Sofa
- LED Lighting
- LED Accent Lighting
- Generous Storage
- 81" Interior Ceiling Height
- USB Port
- Fireplace (N/A Zinger Lite)
- Super Booth Dinette (VBM)
- U-Shaped Dinette (VBM)
- WiFi Prep

### KITCHEN

- Pressed Counter Top w/ Sink Cover
- Stainless Steel High Rise Faucet
- Backsplash (N/A Zinger Lite)
- Stainless Steel Sink
- Range Hood w/ Light & Exhaust Fan
- Wall Mounted System Monitor Panel (VBM)
- New Wood Decors
- 10 Ft<sup>3</sup> 12-Volt Refrigerator
- Maple Cabinet Drawers
- Steel Ball Bearing Drawer Guides
- Oven - LED Glass Top
- Microwave
- Decorative Cabinet Glass
- Wine Cooler (299RE & 340RE)

### BATHROOM

- Large Lavatory Bowl
- Spacious Shower/Tub & One-Piece Surround
- Foot Flush Toilet - Porcelain (VBM)
- Mirrored Medicine Cabinet
- Linen Storage (VBM)
- Glass Shower Door & Radius Shower (VBM)
- Shower Curtain w/ Curved Shower Track (VBM)

### BEDROOM

- King Bed 70X80 (VBM)
- Washer/Dryer Prep (280RB, 299RE, 340BH, 340RE)
- TV Hook-up
- Coordinated Window Treatments
- Bedspread
- Night Stands w/ Outlets on Each Side

- USB Outlet
- Mirrors in Closet (VBM)
- Ship Lap Feature Wall (VBM)
- 110 Outlets
- Gas Strut Under Bed

### EXTERIOR

- Fully Enclosed and Forced Air Heated Underbelly (VBM)
- Backup Camera Prep
- 2 Piece Smooth Front (VBM)
- Solar Prep
- Friction Hinge Entry Door
- Keyed-A-Like Exterior Doors
- Aerodynamic Front End
- Secure Stance Entry Step
- Bumper with Drain Hose Storage and End Caps
- Speakers w/ LED Accents
- Molded Rain Gutters with 3" Drip Spouts
- Large Assist Grab Handle (VBM)
- Black Tank Flush (VBM)
- Secure Stance Steps (Main Door) (VBM)
- 6 Gal Gas/Elec DSI Water Heater (VBM)
- Outside Shower (VBM)
- Radial Tires
- Power Stabilizer Jacks (N/A Single Axle)
- 20 lb Tanks w/ Cover

### OPTIONS

- Upgraded Insulation
- Rear Ladder
- 15K BTU Main A/C
- 50 Amp Service w/ 2<sup>nd</sup> A/C Prep (2+ Slides Only) (Std - 280RB, 299RE, 340RE, 340BH)
- 2<sup>nd</sup> A/C in Bedroom (13.5K)
- 39" TV (VBM) (Standard in 292RE/299RE/340RE)
- 50" TV (VBM)
- 8 Ft<sup>3</sup> Gas/Electric Refrigerator
- Table & Chairs (VBM)

### SINGLE AXLE OPTIONS

- 13.5K A/C (8K Standard)
- 2 Stabilizer Jacks - Front
- Spare Tire - Lite Single Axle
- 8 Ft<sup>3</sup> Gas/Electric Refer

\*VBM: Varies By Model



www.crossroadsrv.com • 1140 W. Lake St Topeka, IN 46571 • (260) 593 - 3850

DISCLAIMER: Product information is as accurate as possible as of the date of publication of this brochure. All features, floor plans, and specifications in this brochure are subject to change without notice. Please also consult CrossRoads' web site at www.crossroadsrv.com for more current product information and specifications. Tow Vehicle Disclaimer. CAUTION: Owners of CrossRoads recreational vehicles are solely responsible for the selection and proper use of tow vehicles. All customers should consult with a motor vehicle manufacturer or their dealer concerning the purchase and use of suitable tow vehicles for CrossRoads products. CrossRoads disclaims any liability or damages suffered as a result of the selection, operation, use or misuse of a tow vehicle. CROSSROADS' LIMITED WARRANTY DOES NOT COVER DAMAGE TO THE RECREATIONAL VEHICLE OR THE TOW VEHICLE AS A RESULT OF THE SELECTION, OPERATION, USE OR MISUSE OF THE TOW VEHICLE. REFERENCE CROSSROADS RV COMPANY OWNERS MANUAL FOR LIMITED WARRANTY DETAILS. \*Length is defined as the distance from the centerline of hitch pin/coupler to rear bumper of trailer.



March 2020