



GEORGETOWN **GT5**

BY FOREST RIVER

GVWR (Gross Vehicle Weight Rating) is the maximum permissible weight of the unit when fully loaded. It includes all weights, inclusive of all fluids, occupants, cargo, optional equipment and accessories. For safety and product performance do NOT exceed the GVWR.

GCWR (Gross Combined Weight Rating) is the maximum permissible loaded weight of your motor home and any towed trailer or towed vehicle. Actual GCWR of this vehicle may be limited by the sum of the GVWR and the installed hitch receiver maximum capacity rating; see hitch rating label for detail.

GAWR (Gross Axle Weight Rating) is the maximum permissible weight, including cargo, fluids, optional equipment and accessories that can be safely supported by each axle.

UVW (Unloaded Vehicle Weight)* is the typical weight of the unit as manufactured at the factory. It includes all weight at the unit's axle(s), including full fuel, all fluids and LP Gas. The UVW does not include cargo, fresh potable water, additional optional equipment or dealer installed accessories.

*Estimated Average based on standard build optional equipment.

CCC (Cargo Carrying Capacity)** is the amount of weight available for fresh potable water, cargo, passengers, additional optional equipment and accessories. CCC is equal to GVWR minus UVW. Available CCC should accommodate fresh potable water (8.3 lbs per gallon). Before filling the fresh water tank, empty the black and gray tanks to provide for more cargo capacity.

** Estimated average based on standard build optional equipment

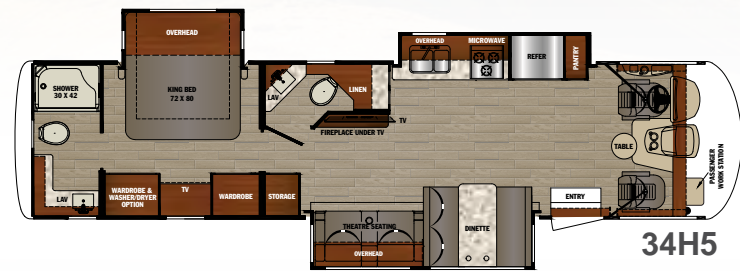
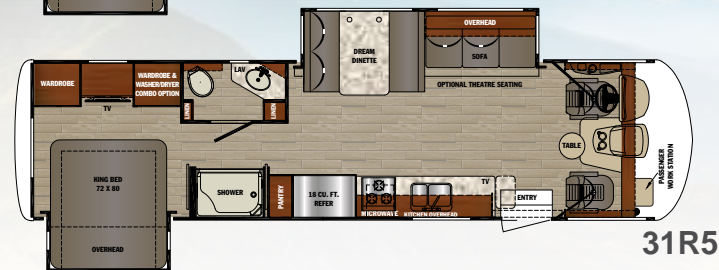
Each Forest River RV is weighed at the manufacturing facility prior to shipping. A label identifying the unloaded vehicle weight of the actual unit and the cargo carrying capacity is applied to every Forest River RV prior to leaving our facilities.

The load capacity of your unit is designated by weight, not by volume, so you cannot necessarily use all available space when loading your unit.

Actual towing capacity is dependent upon your particular loading and towing circumstances, which includes the GVWR, GAWR and GCWR as well as adequate trailer brakes. Please refer to the Operator's Manual of your vehicle for further towing information.

5 SERIES DIMENSIONS & CAPACITIES

	31L5	31R5	34H5	36B5
Chassis	Ford F53	Ford F53	Ford F53	Ford F53
Engine	V-10	V-10	V-10	V-10
Horsepower	320 HP	320 HP	320 HP	320 HP
Torque (ft.-lbs)	460	460	460	460
Wheelbase	208"	208"	242"	242"
Fuel Capacity (gal)	80	80	80	80
GVWR (lbs)	20,500	20,500	22,000	22,000
GCWR (lbs)	26,000	26,000	26,000	26,000
GAWR Front (lbs)	7,500	7,500	8,000	8,000
GAWR Rear (lbs)	13,500	13,500	15,000	15,000
Exterior Storage (cu ft)	136	136	157	161
LP Tank (gal)	24.5	24.5	24.5	24.5
Fresh Water (gal)	82	82	82	82
Water Heater (gal)	6	6	6	6 + 6 = 12
Grey Tank (gal)	42	42	52	42 + 42 = 84
Black Tank (gal)	42	42	52	42 + 42 = 84
Length	34' 11"	34' 11"	37' 11"	37' 11"
Exterior Width	99.5"	99.5"	99.5"	99.5"
Exterior Height	12' 3 1/2"	12' 3 1/2"	12' 5 1/2"	12' 5 1/2"
Interior Width	95.5"	95.5"	95.5"	95.5"
Interior Height	82"	82"	82"	82"
Awning Length	19'	19'	17' & 12'	12' 6"
Furnace (BTU)	35K	35K	35K	35K/20K
Safety Belts	6	6	6	8



5 SERIES FULL BODY PAINT OPTIONS



MERLOT



SOLSTICE



SEMINOLE



MIDNITE

5 SERIES STANDARDS & OPTIONS

STANDARDS

CHROME PACKAGE

Chrome Headlight Bezels
 Chrome Foglight Bezels
 Chrome Mirrors & Logos
 One Piece Fiberglass Roof
 Undermount Stainless Steel Kitchen Sink
 Stainless Steel Faucet w/Pull Out Sprayer
 Automotive Bonded Front Windshield
 Fiberglass Front Cap w/Lighted Logo,
 LED Accent Lights and Automotive
 Bonded Front Windshield
 Slam Latch Side Hinge Baggage Doors
 Encased Power Patio Awning w/LED Light
 Slideout Room Awning(s)
 Stainless Steel Bathroom Sink
 Washer Dryer Combo Prep
 Dream Dinette
 Super Size Dinette (31L5, 31R5)
 "SUPER STORAGE" Rear Cargo Compartment
 30" Wide Entrance Door
 Outside Shower
 Flush Floor Construction Throughout
 Grey Rotocast Storage Compartments w/Drains
 2000 Watt Inverter System
 Rear Roof Ladder
 Pioneer Dash Entertainment System
 w/AM/FM/DVD/Bluetooth/USB
 Rubber Tread Entry Steps
 Custom Cockpit Dash w/ABS Side Consoles,
 Drink Holders, 110V Outlet/USB
 Low Profile Engine Cover w/Drink Holders
 Adjustable 3 Point Seat Belts
 Power Driver's Seat
 Hide-A-Bed Sofa w/Footrests (31R5, 36B5)
 Power Theatre Seats (31L5, 34H5)
 MCD Roller Shades Throughout
 40" LED Main TV
 Full Extension Ball Bearing Drawer Guides
 Heated and Enclosed Holding Tanks
 w/Arctic Package
 Quick Latch Pocket Door To Bedroom
 32" LED Bedroom TV w/Flip Up
 5000 lbs. Tow Hitch w/7-Way Plug
 Dual Coach Batteries
 Electric Battery Disconnect
 Hydraulic 4-Point Leveling Jacks
 Color Side and Rear Camera Package
 One-way Audio on Backup Camera
 Black Tank Flush
 LED Map, Bunk and Accent Lights
 (2) High Output Quiet Air Command™
 Ducted Roof A/C w/Chill Construction
 and (1) Heat Pump
 KING Jack™ Digital TV Antenna
 w/Mount & Built-in Signal Meter
 6 Gallon Gas/Electric Water Heater (x2 36B5)
 5.5 KW Onan Generator
 Vacuum Bonded Gel Coated Sidewalls
 w/Graphics and Partial Paint
 Steel Front Cockpit Cage
 Triple Electric Entrance Step
 Rubberized Entry Assist Handle (exterior)
 Stainless Steel Entry Assist Handle (interior)
 Power Front Sun Shade
 Manual Cockpit Side Sun Shades
 Passenger Side Workstation

MyRV™ Touch Screen w/Wireless Technology
 Diamond Plate Rubber Floor Covering (driver area)
 Shaw Residential Vinyl Flooring
 18 cu. ft. Stainless Steel Gas/Electric
 Norcold Refrigerator
 Stainless Steel 3-Burner Cooktop
 w/Oven and Flush Mount Glass Stove Cover
 Solid Surface Countertops
 Flip-up Solid Surface Countertop Extension
 Emergency Start Switch
 Enclosed Quick Connect Exterior LP Fitting
 King Bed (72" x 80")
 One Piece Fiberglass Shower

POPULAR OPTIONS

Manual Front Overhead Bunk
 P2K Power Front Overhead Bunk
 Convection Microwave w/Oven
 Dual Pane Windows
 Front Mount TV (N/A w/Front Overhead Bunk)
 Exterior Cargo Tray
 Washer Dryer Combo
 7.0 KW Onan Generator
 Full Body Paint
 Power Theatre Seats (31R5, 36B5)
 (Standard on 31L5, 34H5)

EXTERIOR OPTIONS

Steel Partial Paint Package
 Black Partial Paint Package

FULL BODY PAINT OPTIONS

Merlot
 Solstice
 Seminole
 Midnite

CABINERY

Landis Ash
 Raised Panel Solid Wood Cabinet Doors
 w/Hidden Hinges

INTERIOR DÉCOR OPTIONS

Café
 Sand Castle
 Granite

CUSTOMER SATISFACTION



www.ForestRiverBuyLocal.com

FREE MEMBERSHIP
 to Forest River Owners' Group

www.forestriverfrog.com

All information contained in this brochure is believed to be accurate at the time of publication. However, during the model year, it may be necessary to make revisions and Forest River, Inc., reserves the right to make all such changes without notice, including prices, colors, materials, equipment and specifications as well as the addition of new models and the discontinuance of models shown in this brochure. Therefore, please consult with your Forest River, Inc., dealer and confirm the existence of any materials, design or specifications that are material to your purchase decision. 8/18

©2018 GT5

a Division of Forest River, Inc., a Berkshire Hathaway company. All Rights Reserved.



GEORGETOWN

BY FOREST RIVER

GT5

For more information visit
www.forestriverinc.com/gt5

Forest River, Inc.
 Georgetown Division
 902 County Road 1
 Elkhart, IN 46515
 (574) 367.3285



YOUR GT5 DEALER



For more information on
 Coach-Net, scan here.



Learn More
 Scan this barcode using
 a QR Reader on your
 smart phone to learn
 more about Forest River.



A Berkshire Hathaway company.