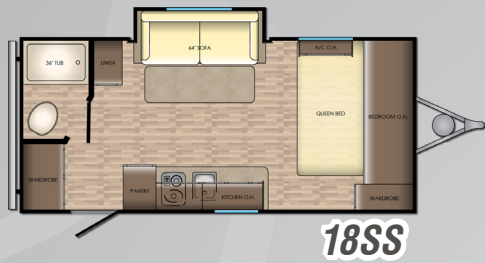


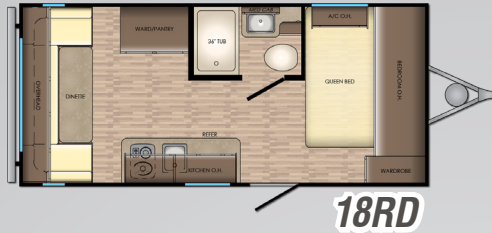
# ZINGER



**CROSSROADS**  
*Recreational Vehicles*



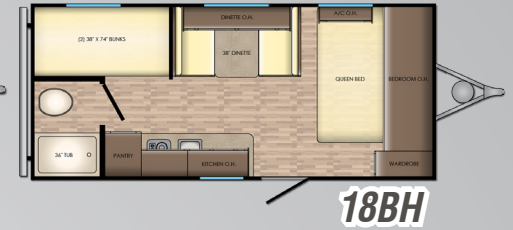
**18SS**



**18RD**



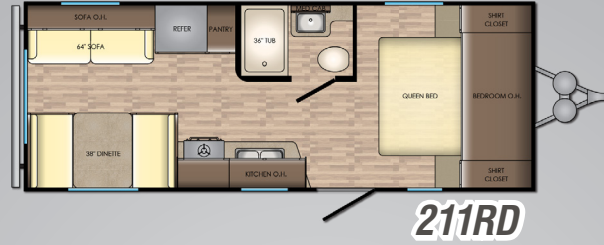
**18RB**



**18BH**



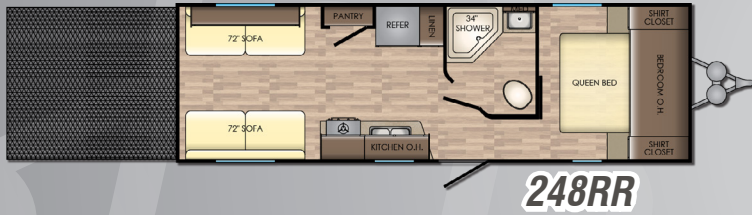
**205BH**



**211RD**



**229RB**



**248RR**



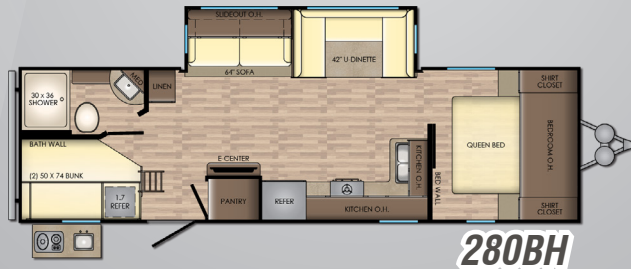
**252BH**



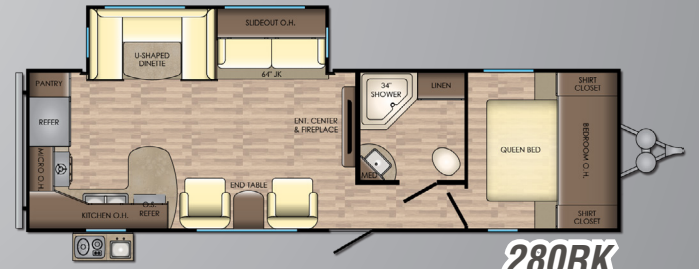
**254RB**



**258BH**



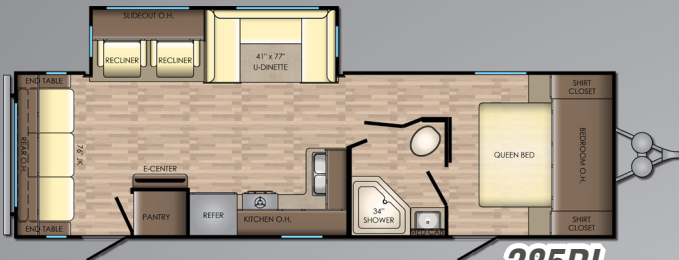
**280BH**



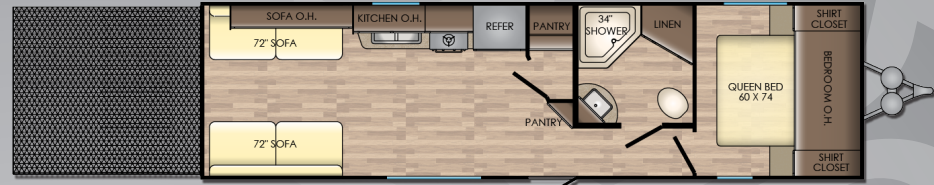
**280RK**

\*SEE WEBSITE FOR ADDITIONAL SPECS

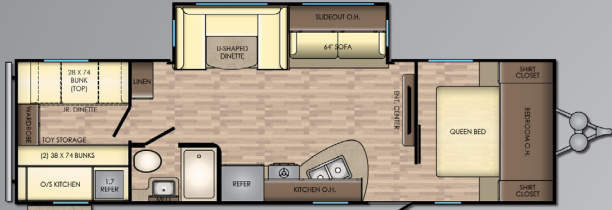
MODEL	ZR-18SS	ZR-18RD	ZR-18RB	ZR-18BH	ZR-205BH	ZR-211RD	ZR-229RB	ZR-248RR	ZR-252BH	ZR-254RB	ZR-258BH	ZR-280BH	ZR-280RK
DRY WEIGHT	3516	3290	3178	3246	4418	4322	5514	5378	4850	5882	6070	6542	6570
GVWR	4510	4520	4420	4520	7540	6500	7730	7830	7600	7780	9560	9480	9610
LENGTH	21' 6"	21' 6"	20' 11"	21' 11"	24' 11"	25' 2"	26' 9"	28' 11"	28' 11"	29' 6"	29' 11"	32' 6"	32' 11"
EXT. HEIGHT W/ A/C	9' 7"	9' 7"	9' 7"	9' 7"	10' 5"	10' 5"	10' 5"	11' 0"	10' 5"	11' 2"	11' 2"	11' 2"	11' 2"
FRESH WATER	27 Gal	27 Gal	27 Gal	27 Gal	45 Gal	45 Gal	51 Gal	51 Gal	45 Gal	51 Gal	51 Gal	51 Gal	51 Gal
BLACK WATER	25 Gal	25 Gal	25 Gal	25 Gal	25 Gal	25 Gal	44 Gal	44 Gal	25 Gal	44 Gal	44 Gal	44 Gal	44 Gal
GRAY WATER	25 Gal	25 Gal	25 Gal	25 Gal	25 Gal	25 Gal	88 Gal	44 Gal	50 Gal	88 Gal	88 Gal	88 Gal	88 Gal



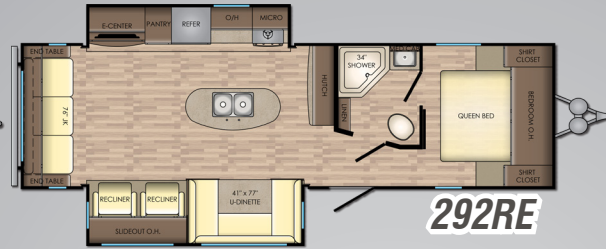
**285RL**



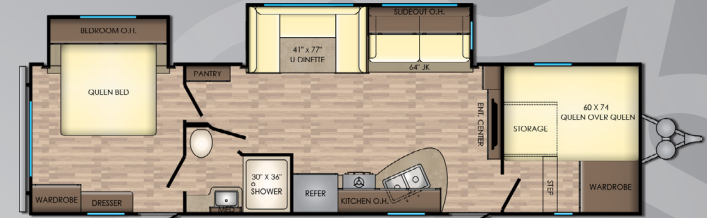
**288RR**



**290KB**



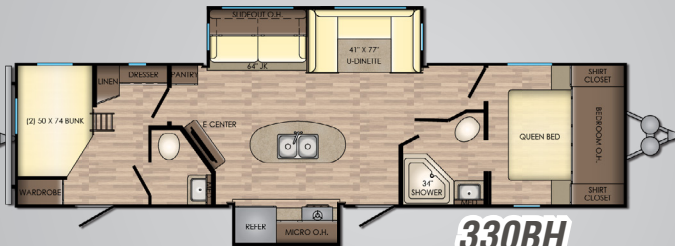
**292RE**



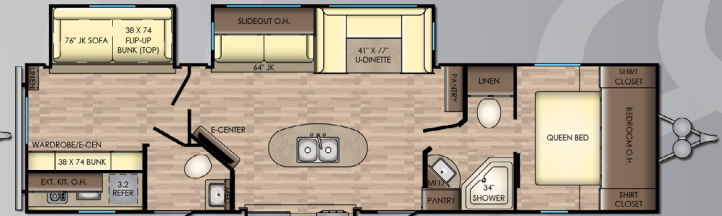
**320FB**



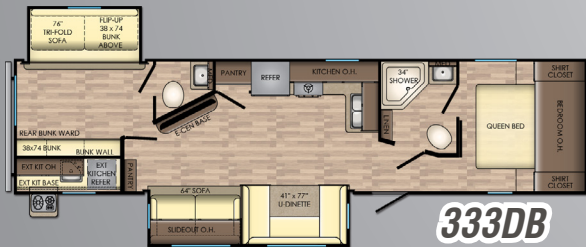
**328SB**



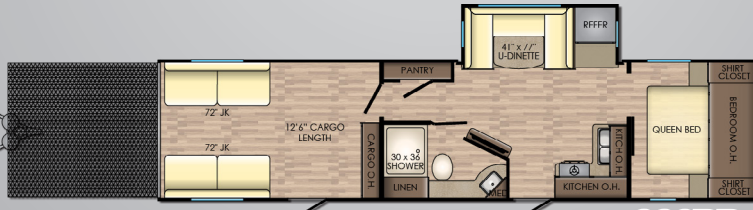
**330BH**



**331BH**



**333DB**



**338RR**



**340RS**

\*SEE WEBSITE FOR ADDITIONAL SPECS

MODEL	ZR-285RL	ZR-288RR	ZR-290KB	ZR-292RE	ZR-320FB	ZR-328SB	ZR-330BH	ZR-331BH	ZR-333DB	ZR-338RR	ZR-340RS
DRY WEIGHT	6544	5726	6594	7064	7570	7734	7980	8876	8196	7224	8424
GVWR	9520	7930	9670	9600	9840	9740	9800	11370	10400	9980	11230
LENGTH	32' 6"	32' 11"	33' 6"	33' 0"	35' 11"	36' 6"	37' 6"	37' 6"	37' 7"	37' 6"	38' 0"
EXT. HEIGHT W/ A/C	11' 2"	11' 0"	11' 2"	11' 2"	11' 3"	11' 3"	11' 3"	11' 3"	11' 3"	11' 3"	11' 3"
FRESH WATER	51 Gal	51 Gal	51 Gal	51 Gal	51 Gal	51 Gal	51 Gal	51 Gal	51 Gal	51 Gal	51 Gal
BLACK WATER	44 Gal	44 Gal	44 Gal	44 Gal	44 Gal	44 Gal	88 Gal	88 Gal	88 Gal	44 Gal	44 Gal
GRAY WATER	44 Gal	44 Gal	44 Gal	44 Gal	44 Gal	44 Gal	44 Gal	44 Gal	44 Gal	88 Gal	44 Gal



## STANDARDS

### LIVING ROOM

- LCD Remote
- Designer Valances w/ Soft Legs
- Storage Doors Below Booth Dinette
- Three Decor Options
- Wood Slide-Out Fascia
- AM/FM Stereo System w/ Bluetooth
- Residential Wood Blinds
- Chair Rail in Slide-Out
- Flush Floor Slide-Out w/ Large Dinette Windows
- Sleeper Sofa
- Decorative Glass in Sofa Slide Cabinets
- LED Accent Lighting
- Generous Storage
- 81" Interior Ceiling Height

### KITCHEN

- Stainless Steel High Rise Faucet
- Backsplash
- 60/40 Sink
- Range Hood w/ Light & Exhaust Fan
- Wall Mounted System Monitor Panel
- Maple Raised Panel Cabinet Doors
- 6 Cu. Ft. Gas/Electric DSI Refrigerator
- Maple Cabinet Drawers
- Steel Ball Bearing Drawer Guides
- Stainless Steel Oven
- Stainless Steel Microwave

### BATHROOM

- Large Lavatory Bowl
- Spacious Shower/Tub & One-Piece Surround
- Foot Flush Porcelain Toilet
- Mirrored Medicine Cabinet
- Linen Storage (VBM)
- Glass Shower Door & Neo Angle Shower (VBM)
- Shower Curtain w/ Curved Shower Track (VBM)

### BEDROOM

- 60" X 74" Mattress
- TV Hook-up
- Coordinated Window Treatments
- Decorative Bedspread
- Night Stands w/ Outlets on Each Side

### EXTERIOR

- Fully Enclosed and Forced Air Heated Underbelly
- Backup Camera Prep
- Solar Prep
- Friction Hinge Entry Door
- Keyed-A-Like Exterior Doors
- Aerodynamic Front End
- Easy Open Entry Step
- Bumper with Drain Hose Storage and End Caps
- Speakers w/ LED Accents
- Molded Rain Gutters with 3" Drip Spouts
- Large Assist Grab Handle
- Black Tank Flush

## OPTIONS

- Upgraded Insulation
- Rear Ladder
- 39" TV (VBM)
- 15K BTU Main A/C
- 50 Amp Service w/ 2<sup>nd</sup> A/C Prep (2+ Slides Only)
- 2<sup>nd</sup> A/C in Bedroom (15K)

\*VBM: Varies By Model

## DECORS



Del Mar



Malibu\*



Manhattan

\*Zinger Lite Only

www.crossroadsrv.com • 1140 W. Lake St Topeka, IN 46571 • (260) 593 - 3850

DISCLAIMER: Product information is as accurate as possible as of the date of publication of this brochure. All features, floor plans, and specifications in this brochure are subject to change without notice. Please also consult CrossRoads' web site at [www.crossroadsrv.com](http://www.crossroadsrv.com) for more current product information and specifications. Tow Vehicle Disclaimer. CAUTION: Owners of CrossRoads recreational vehicles are solely responsible for the selection and proper use of tow vehicles. All customers should consult with a motor vehicle manufacturer or their dealer concerning the purchase and use of suitable tow vehicles for CrossRoads products. CrossRoads disclaims any liability or damages suffered as a result of the selection, operation, use or misuse of a tow vehicle. CROSSROADS' LIMITED WARRANTY DOES NOT COVER DAMAGE TO THE RECREATIONAL VEHICLE OR THE TOW VEHICLE AS A RESULT OF THE SELECTION, OPERATION, USE OR MISUSE OF THE TOW VEHICLE. REFERENCE CROSSROADS RV COMPANY OWNERS MANUAL FOR LIMITED WARRANTY DETAILS. \*Length is defined as the distance from the centerline of hitch pin/coupler to rear bumper of trailer.



March 2018