

Passport

GT SERIES TRAVEL TRAILERS  
SL SERIES TRAVEL TRAILERS

GO  
EVERYWHERE





# The ultimate ownership experience.

The goal of Keystone RV Company is to surprise and delight our owners at each and every touchpoint. We're happy when our campers are happy, and we are committed to providing the very best ownership experience in the industry.



**Keystone RV  
Company**

## 1 EASIER SHOPPING.

At Keystone, we make choosing an RV as easy as finding the Big Dipper on a dark summer night. With comprehensive online product information, Key Connect™ product advisors, and an unparalleled dealer network, we will help you select the perfect RV for your family's adventure.

## 2 INNOVATIVE THINKING.

The road's a nicer place when you have the industry's smartest features behind you. Keystone leads the pack in patented innovations that make our RVs safer, more comfortable, and easier to operate.

## 3 LONG HAUL QUALITY.

To keep you on the road, there are certain things we just won't build a Keystone RV without. Game-changing features like our Unified Wiring Standard, Tru-Fit™ five-point slide construction, and no-fail Tuf-Lok™ A/C duct joiners combined with exhaustive testing and inspections are some of the reasons why Keystone is able to offer our owners the industry's best 3-year limited structural warranty.

## 4 WORRY-FREE CUSTOMER SERVICE.

Wherever the road takes you, you're never too far from an authorized Keystone service center. We also offer live service assistance, ultra-fast parts shipping, online maintenance tips and tricks, and a single-point warranty claims policy. *That's* peace of mind.

## 5 KEYSTONE NATION.

When you choose Keystone, you become a part of one of the largest camping families in the country. We're Keystone Nation. A friendly community where people share photos, travel tips and amazing stories – all in the spirit of camaraderie and adventure. Come join us.

Experience the Passport lifestyle by visiting [#keystonepassport](#)





# Keystone EXCLUSIVE Innovations

Year after year, Keystone RV's experienced team delivers "Built For The Long Haul" quality you expect and exclusive innovations you won't find anywhere else.



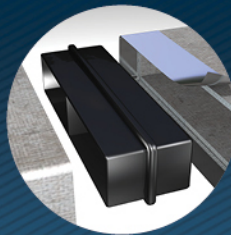
## 3-year Limited Structural Warranty, 1-year Limited Base Warranty

Every new Keystone RV comes with the industry's best three-year limited structural warranty AND a one-year limited base warranty. Ask your dealer, visit [keystonerv.com](http://keystonerv.com), or call Keystone Owner Relations for details.



### KeyTV™

No more connection guesswork or poor reception. KeyTV offers a game-changing, single point of control of over-the-air, cable, and satellite feeds.



### Tuf-Lok Thermoplastic Duct Joiners

Tuf-lok thermoplastic duct joiners form a permanent, crush-resistant seal in your air-conditioning duct.



### Color-Coded Unified Wiring Standard

Easy-to-trace circuits simplify electrical and entertainment system troubleshooting.



### In-floor Heating Ducts

Distributes heat evenly through your coach for superior comfort.



### 4G LTE and Wi-Fi Prep

All units are equipped with a new Furion® antenna that integrates 4G LTE and Wi-Fi with standard VHF/UHF/AM/FM reception.



### Tru-fit™ Slide Construction

A more durable slide room design that minimizes functional motor and structural stress and resists leaking.



# PASSPORT



SL SERIES TRAVEL TRAILERS | GT SERIES TRAVEL TRAILERS

## Less AND More: The All-New Passport®

Redefining expectations for ultra-lightweight travel trailers, the redesigned Passport GT and SL Series offer less weight and more of everything—more style, more comfort, more technology, and more ways to maximize your camping adventures.

For more information, please visit [keystonerv.com/Passport](http://keystonerv.com/Passport)



### Thoughtful Design

The Passport team has included dozens of convenient features in every model.



**Deep-seated Stainless Steel Sink**  
Includes cover and residential pull-down faucet



**Furrion® Glass top Range and Oven**  
Cook in style with a Furrion glass-top range and oven. Glass cover folds to become a backsplash when in use.



**Glass-Panel Pocket Doors**  
Taking a page from residential design, all Passports feature stylish slide-away doors.



**Built-in USB Ports**  
Keep devices charged for the next adventure with ten USB charging ports featured in every Passport floorplan.



**Residential-Size Queen Bed**  
Passport makes it easy to customize your bedroom. All Passports feature a 60" x 80" bed that uses standard queen size bedding (N/A 3351BH and 175BH).



**New & Improved Murphy Bed**  
The new 60" x 80" mattress folds easily into a sofa for extra daytime seating.



**Termination Valve Service Light**  
Standard on all models, this light allows adjustments to be made with two hands, no flashlight required.



**Power Awning with Tilt and LED lighting**  
The tilt feature helps direct rain flow away from the campsite.



**Outdoor Shower**  
Standard on all models, this hot and cold shower makes it easy to bathe pets or clean up boots and tools outside.

### Modern Amenities

From USB ports to sophisticated appliances that eliminate common frustrations, Passport brings a more modern approach to camping.





more product detail at  
[www.keystonerv.com/Passport](http://www.keystonerv.com/Passport)



## Light & Lively

Passport is bringing a fresh perspective to travel trailers with breezy new wall coverings and roomy vaulted ceilings. With careful planning and material selection, the Passport design team has added residential upgrades including glass-panel doors, pressed countertops and high arc kitchen faucets, all while keeping these units at an oh-so-towable weight.





### A Study in Contrasts

Light flooring, countertops, and wall coverings are a modern complement to the clean lines of Passport's mid-tone wood cabinetry and stained nickel finishes.



### Show-stopping Touches

Passport's master bedroom is transformed with a rustic, reclaimed wood feature wall and recessed accent lighting.







more product detail at  
[www.keystonerv.com/Passport](http://www.keystonerv.com/Passport)

# Passport GT Series

## TRAVEL TRAILERS

- Automotive painted fiberglass front cap
- MORryde® Step Above™ entry steps (main entrance)
- Exceptional 45 cu. ft. pass-through storage with magnetic door hold
- Exterior television hookup
- Exterior hot and cold shower
- Load equalization axles (stability and weight equalization)
- Service light near termination valves
- Exclusive KeyTV™ multisource controller for satellite, cable, and over-the-air feeds
- 4G LTE and Wi-Fi prep
- Solar prep
- Backup camera prep
- Black tank flush
- Heated and enclosed underbelly and valves
- Vaulted ceiling
- 60" x 80" queen bed (N/A 3351BH)
- USB ports (10)
- Seamless, one-piece upgraded countertops
- Furrion® glass-top range with gas oven
- Deep-seated stainless steel sink with cover and residential pull-down faucet
- High performance in-floor heat duct system
- Motion activated lighting at main entrance and pass-through storage
- Power tongue jack
- 8 cu. ft. refrigerator



**MORryde® StepAbove™**  
 Ultra-stable and secure entry steps with Keystone kickplate.

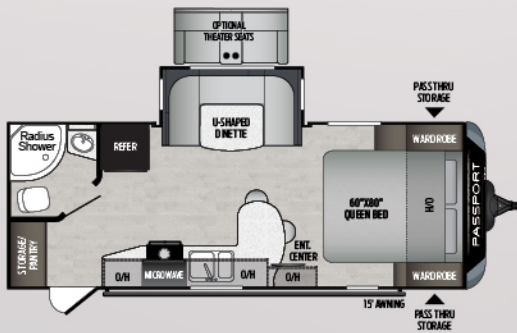


**Dimmer Switch in Slide box**  
 Ultimate control over your lighting levels.

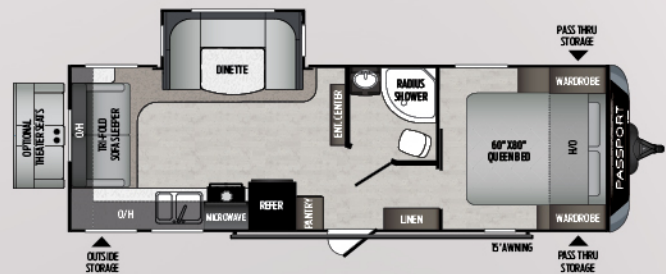


**Outside Kitchen**  
 Prepare meals campside with outdoor cooktops, refrigerators and sinks on select models.

**Automotive Grade Painted Fiberglass Front Cap**  
 Passport caps include Keystone's exclusive KeyGuard™ protective coating, designed to provide chip and rock protection.



**2210RB** | Super slide w/ oversized bathroom  
 Weight: 4700 LBS. | Length: 26' 3"

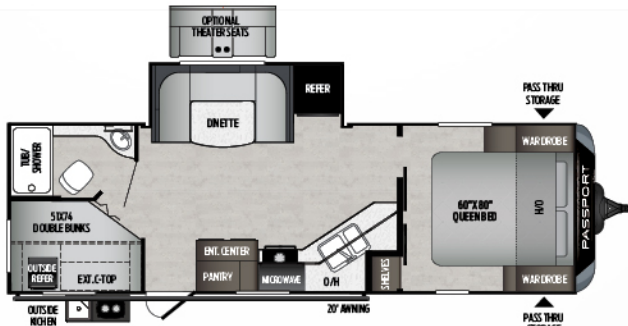


**2521RL** | Single slide, ultimate couples coach  
 Weight: 5320 LBS. | Length: 29' 10"

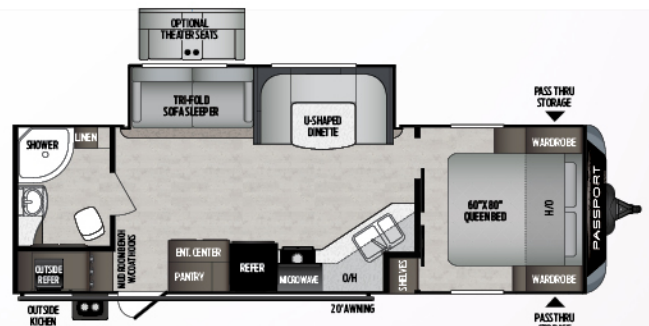


# Passport GT Series

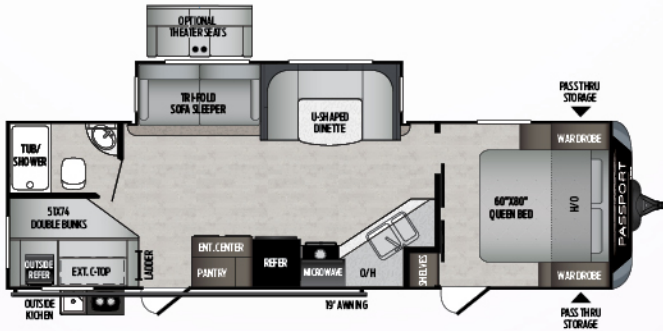
## TRAVEL TRAILER FLOOR PLANS



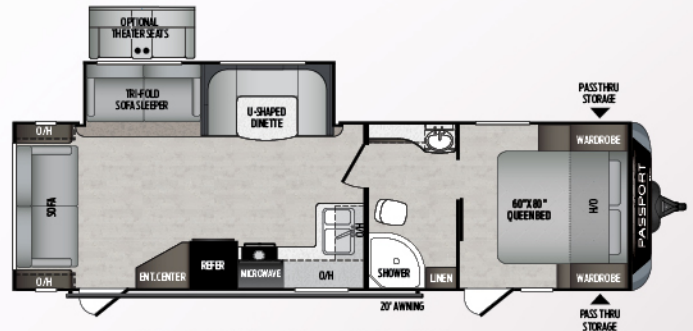
**2600BH** | Double over double bunkhouse, with outside kitchen  
Weight: 5450 LBS. | Length: 30' 8"



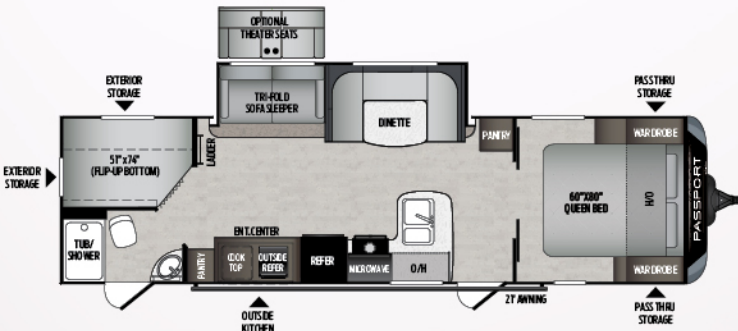
**2710RB** | Mudroom bench with coat hooks/walk-in pantry  
Weight: 5645 | Length: 31' 5"



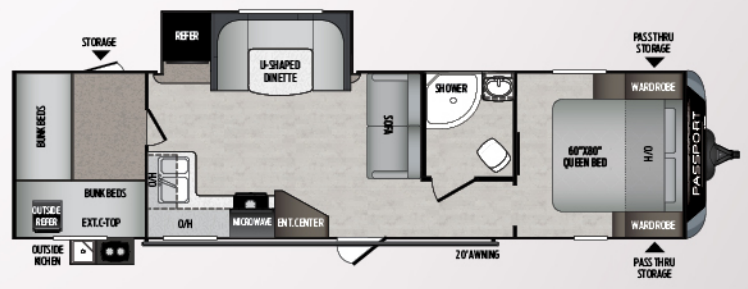
**2820BH** | Multi-purpose bunkhouse w/ outside kitchen  
Weight: 5930 | Length: 32' 11"



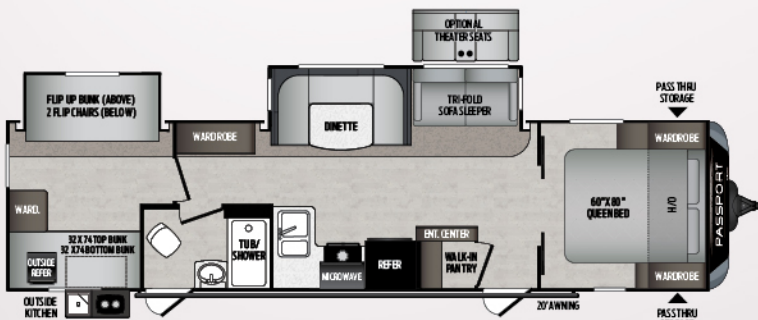
**2900RL** | Super-slide/rear living  
Weight: TBD | Length: 33' 6"



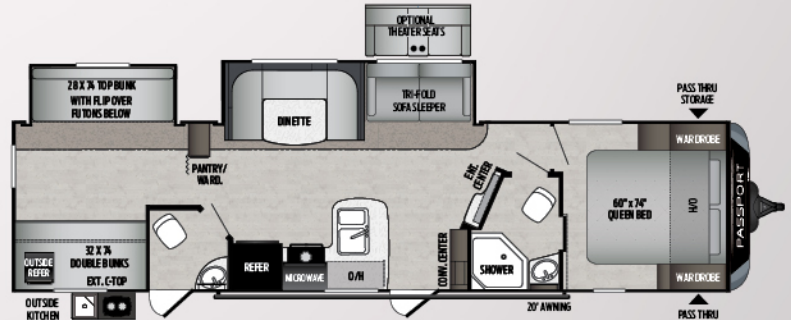
**2950BH** | Multi-purpose bunkhouse w/ outside kitchen  
Weight: 6145 LBS. | Length: 33' 9"



**3100QB** | Quad bunk w/ outside kitchen  
Weight: TBD LBS. | Length: 35' 11"



**3221BH** | Sleeps 8-10 w/outside kitchen  
Weight: 6485 LBS. | Length: 35' 5"



**3351RL** | Bath-N-Half bunkhouse  
Weight: 7415 LBS. | Length: 37' 7"





more product detail at  
[www.keystonerv.com/Passport](http://www.keystonerv.com/Passport)

## Passport SL Series

### ULTRA-LITE TRAVEL TRAILERS

- Exceptional 45 cu. ft. pass-through storage with magnetic door holds
- Exterior television mount
- Exterior hot and cold shower
- Service light near termination valves
- EXCLUSIVE KeyTV™ multisource controller for satellite, cable, and over-the-air feeds
- 4G LTE and Wi-Fi prep
- Solar prep
- Blank tank flush
- 60" x 80" queen bed (N/A 175BH)
- USB ports throughout
- Furrion® glass-top range with gas oven
- Seamless, one-piece countertops
- Deep-seated stainless steel sink with cover
- Residential pull-down faucet
- Motion activated lighting at main entrance and pass-through storage
- 6 cu. ft. refrigerator
- High performance in-floor heat duct system (Available in models 240BH and 292BH)
- Heated and enclosed underbelly and valves



**Furrion® Kitchen Appliances**  
Chef-inspired appliances that give you the perfect blend of performance, precision and style.



**Pass-through Storage**  
There is plenty of room to take all of your family's supplies with you on your adventure.

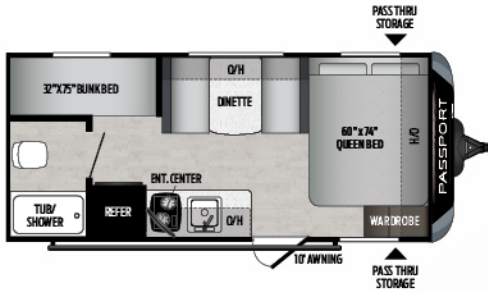


**Seamless, One-piece Countertops**  
Sturdy and water-resistant, these beautiful countertops are a Passport standard.

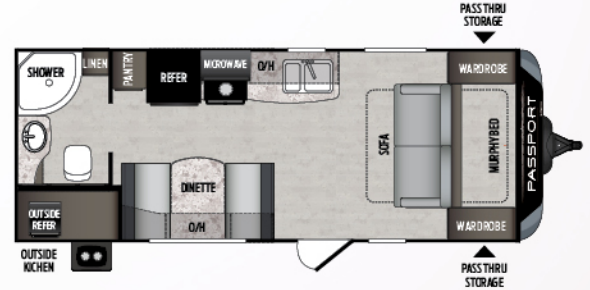


# Passport SL Series

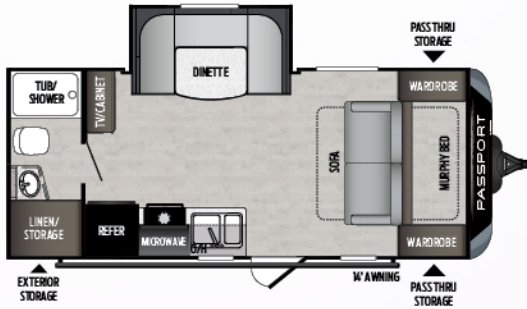
## ULTRA-LIGHTWEIGHT TRAVEL TRAILER FLOOR PLANS



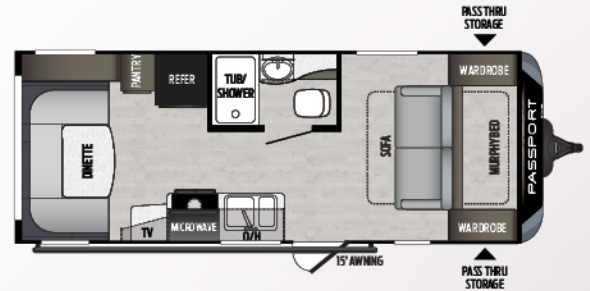
**175BH** | Single-axle bunkhouse w/ queen bed  
Weight: 3255 LBS. | Length: 21' 3"



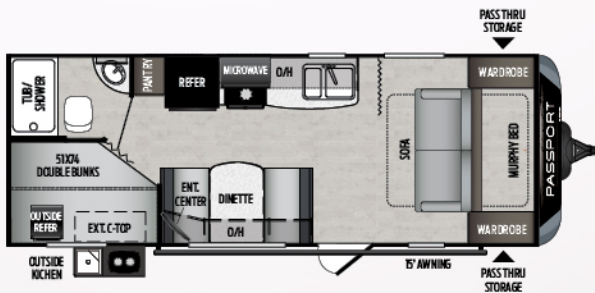
**197RB** | Double-axle couple's coach  
Weight: 3865 LBS. | Length: 23' 11"



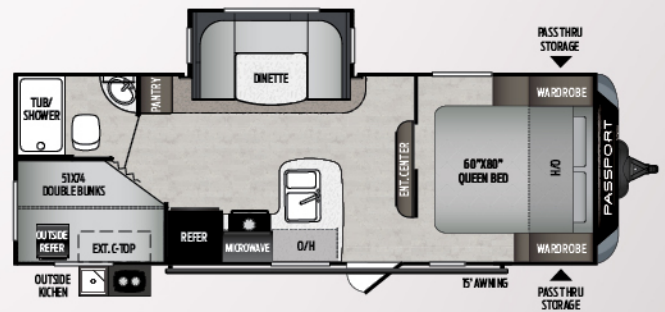
**199ML** | Single-slide couple's coach  
Weight: 3904 LBS. | Length: 22' 9"



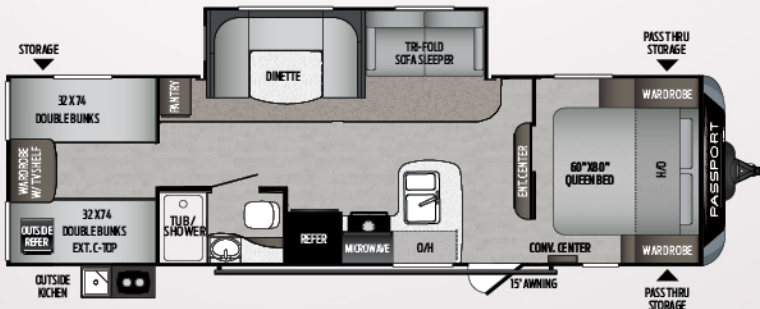
**216RD** | Couple's coach w/ oversized dinette  
Weight: 3925 | Length: 24' 10"



**239ML** | Murphy bed, bunkhouse with outside kitchen  
Weight: 4140 LBS. | Length: 25' 5"



**240BH** | Bunkhouse w/ 60" x 80" queen bed  
Weight: 4960 LBS. | Length: 27' 4"



**292BH** | Quad bunkhouse w/ pack-n-play door  
Weight: 5760 LBS. | Length: 32' 4"





more product detail at  
[www.keystonerv.com/Passport](http://www.keystonerv.com/Passport)

# Passport Western | ULTRA-LITE TRAVEL TRAILERS

- Automotive Fiberglass front cap
- MORryde® Step Above™ entry steps
- Exceptional 45 cu. ft. pass-through storage with magnetic door hold
- Exterior television mount
- Exterior hot and cold shower
- Load equalization axles (stability and weight equalization)
- Service light near termination valves
- EXCLUSIVE KeyTV™ multisource controller for satellite, cable, and over-the-air feeds
- 4G LTE and Wi-Fi prep
- Solar prep
- Backup camera prep (GT Series)
- Black tank flush
- Heated and enclosed underbelly and valves
- Vaulted ceiling
- 60" x 80" queen bed
- USB ports (10, GT Series)
- Seamless, one-piece upgraded countertops
- Furrion® glass-top range with gas oven
- Deep-seated stainless steel sink with cover and residential pull-down faucet
- High performance in-floor heat duct system
- Motion activated lighting at main entrance and pass-through storage
- Power tongue jack
- 8 cu. ft. refrigerator



**MORryde® StepAbove™**  
 Ultra-stable and secure entry steps with Keystone kickplate.



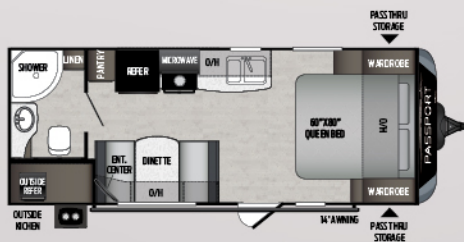
**Furrion® Kitchen Appliances**  
 Chef-inspired appliances that give you the perfect blend of performance, precision and style.



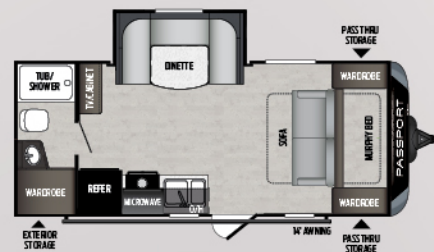
**Outside Kitchen**  
 Prepare meals campside with outside cooktops, refrigerators and sinks on select models.



**Automotive Grade Painted Fiberglass Front Cap**  
 Passport caps include Keystone's exclusive KeyGuard™ protective coating, designed to provide chip and rock protection.



**197RBWE** | Double-axle couples coach  
 SL SERIES | Weight: 4220 LBS. | Length: 24' 6"

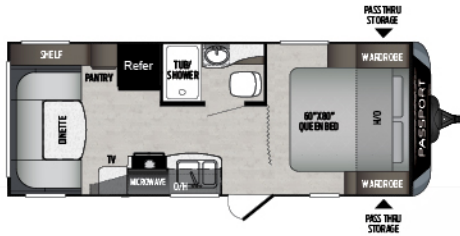


**199MLWE** | Double-axle couple's coach w/u-shaped dinette slideout  
 SL SERIES | Weight: 4232 LBS. | Length: 23' 4"

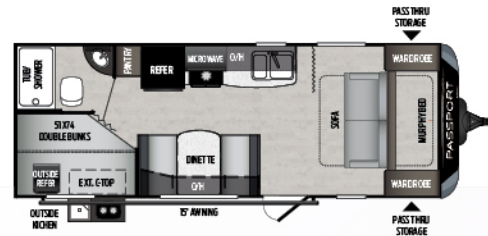


# Passport Western

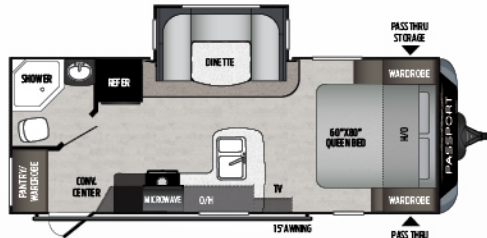
## ULTRA-LIGHTWEIGHT TRAVEL TRAILER FLOOR PLANS



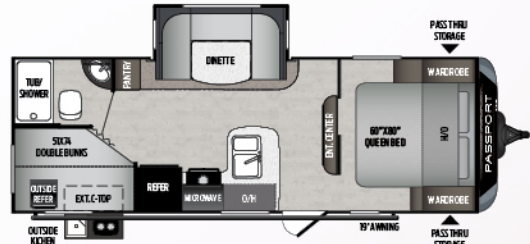
**216RDWE** | Couple's coach w/ oversized dinette  
SL SERIES | Weight: 4220 LBS. | Length: 24'10"



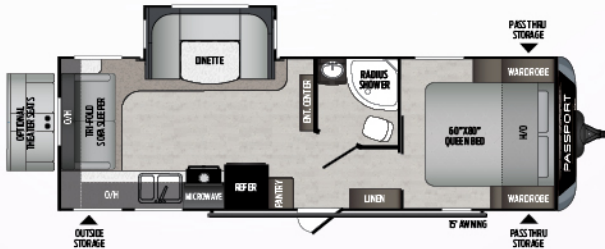
**239MLWE** | Murphy bed, bunkhouse with outside kitchen  
SL SERIES | Weight: 4232 | Length: 25'5"



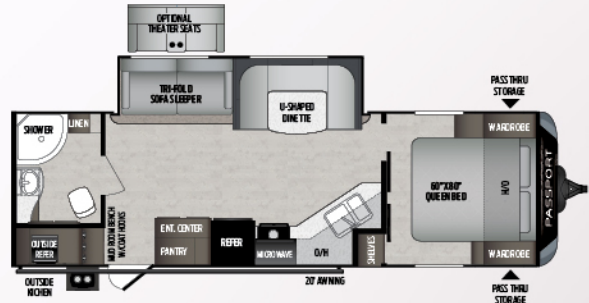
**2210RBWE** | Single-slide couple's coach  
GT SERIES | Weight: 4732 LBS. | Length: 26'3"



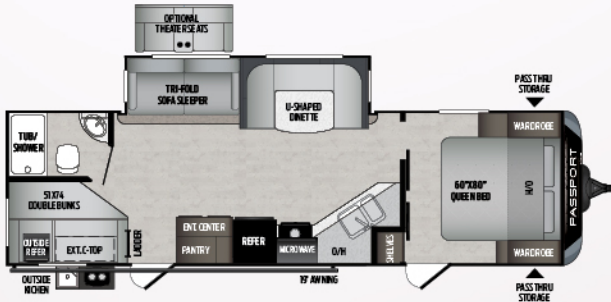
**240BHW** | Bunkhouse w/ queen bed  
SL SERIES | Weight: 5032 LBS. | Length: 27'10"



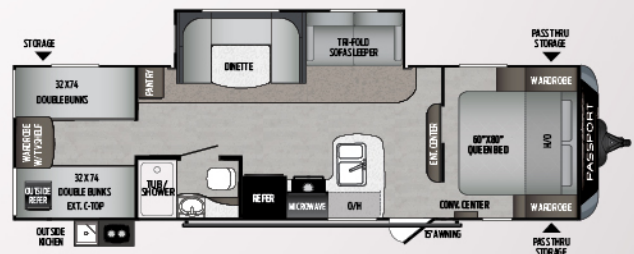
**2521RLWE** | Single-slide, ultimate couples coach  
GT SERIES | Weight: 5320 LBS. | Length: 32'10"



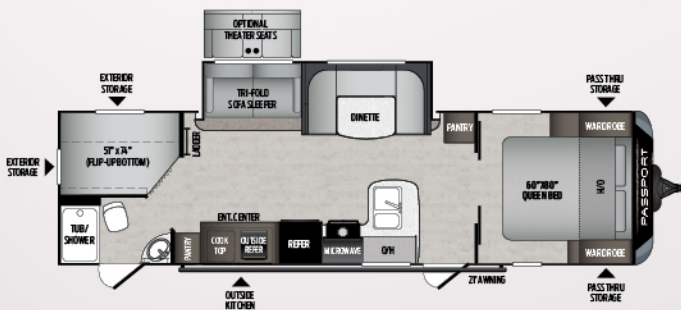
**2710RBWE** | Mud room bench w/coat hooks walk-in pantry  
GT SERIES | Weight: 5645 | Length: 31'5"



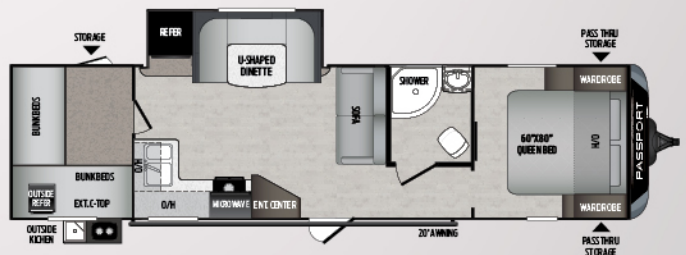
**2820BHW** | Multi-purpose bunkhouse w/ outside kitchen  
GT SERIES | Weight: 5930 | Length: 32'11"



**292BHW** | Couple's coach w/ oversized dinette  
SL SERIES | Weight: 5717 | Length: 32'10"



**2950BHW** | Multi-purpose bunkhouse w/outside kitchen  
GT SERIES | Weight: 6236 LBS. | Length: 33'9"



**3100QBWE** | Quad bunk w/ outside kitchen  
GT SERIES | Weight: TBD LBS. | Length: 35'11"



### GT SERIES ULTRA-LIGHTWEIGHT TRAVEL TRAILERS

MODEL	WEIGHT	CARRYING CAPACITY	HITCH WEIGHT	FRESH WATER	WASTE WATER	GRAY WATER	LPG	LENGTH*	WIDTH	HEIGHT	AWNING
2210RB	4700	2300	575	43	38	38	40	26' 3"	8'	11'	15'
2521RL	4994	2006	550	43	38	76	40	29' 10"	8'	10' 8"	15'
2600BH	5450	1750	665	43	38	76	40	30' 8"	8'	10' 8"	20'
2710RB	5650	1550	670	43	38	76	40	31' 5"	8'	10' 8"	20'
2820BH	5930	1270	720	43	38	76	40	32' 11"	8'	10' 8"	19'
2900RL	TBD	TBD	TBD	43	38	38	40	33' 6"	8'	11' 2"	20'
2950BH	6145	1655	705	43	38	76	40	33' 9"	8'	11' 2"	21'
3100QB	TBD	TBD	TBD	43	38	76	40	35' 11"	8'	11' 2"	21'
3221BH	TBD	TBD	TBD	TBD	TBD	TBD	TBD	TBD	TBD	TBD	TBD
3351RL	7415	2165	785	43	76	76	40	37' 7"	8'	10' 11"	20'

### SL SERIES ULTRA-LIGHTWEIGHT TRAVEL TRAILERS

MODEL	WEIGHT	CARRYING CAPACITY	HITCH WEIGHT	FRESH WATER	WASTE WATER	GRAY WATER	LPG	LENGTH*	WIDTH	HEIGHT	AWNING
175BH	3255	1245	410	43	38	38	40	21' 3"	8'	10' 5"	10'
197RB	3865	1735	460	43	38	38	40	23' 11"	8'	10' 4"	14'
199ML	3904	1496	425	43	38	38	40	22' 9"	8'	10' 4"	14'
216RD	3925	2075	490	43	30	30	40	24' 10"	8'	10' 5"	15'
239ML	4140	1260	425	43	38	38	40	25' 5"	8'	10' 4"	15'
240BH	4960	2040	535	43	30	30	40	27' 4"	8'	10' 8"	19'
292BH	5760	1440	755	43	30	30	40	32' 4"	8'	10' 8"	15'

### WESTERN ULTRA-LIGHTWEIGHT TRAVEL TRAILERS

	MODEL	WEIGHT	CARRYING CAPACITY	HITCH WEIGHT	FRESH WATER	WASTE WATER	GRAY WATER	LPG	LENGTH*	WIDTH	HEIGHT	AWNING
SL SERIES WESTERN	197RBWE	4220	1380	416	43	30	30	40	24' 6"	8'	10' 4"	14'
	199MLWE	4222	1178	430	43	30	30	40	23' 4"	8'	10' 2"	14'
	216RDWE	4220	1780	440	43	30	30	40	24' 10"	8'	10' 5"	15'
	239MLWE	4492	908	436	43	30	30	40	25' 5"	8'	10' 2"	15'
	240BHWE	5032	1968	526	43	30	30	40	27' 10"	8'	10' 7"	19'
GT SERIES WESTERN	292BHWE	5848	1352	714	43	30	30	40	32' 10"	8'	10' 9"	15'
	2210RBWE	4732	2768	552	43	30	30	40	26' 3"	8'	11' 0"	15'
	2521RLWE	5388	1612	642	43	30	60	40	29' 10"	8'	10' 8"	15'
	2950BHWE	6236	1564	704	43	30	60	40	33' 9"	8'	11' 2"	21'
	3100QBWE	TBD	TBD	TBD	43	38	76	40	35' 11"	8'	11' 2"	21'

DISCLAIMER: Product information is as accurate as possible as of the date of publication of this brochure. All features, floor plans, and specifications in this brochure are subject to change without notice. Please also consult Keystone's web site at [www.keystonerv.com](http://www.keystonerv.com) for more current product information and specifications. Tow Vehicle Disclaimer. CAUTION: Owners of Keystone recreational vehicles are solely responsible for the selection and proper use of tow vehicles. All customers should consult with a motor vehicle manufacturer or their dealer concerning the purchase and use of suitable tow vehicles for Keystone products. Keystone disclaims any liability or damages suffered as a result of the selection, operation, use or misuse of a tow vehicle. KEYSTONE'S LIMITED WARRANTY DOES NOT COVER DAMAGE TO THE RECREATIONAL VEHICLE OR THE TOW VEHICLE AS A RESULT OF THE SELECTION, OPERATION, USE OR MISUSE OF THE TOW VEHICLE. \*Length is defined as the distance from the centerline of hitch pin/coupler to rear bumper of trailer. Please review owner's manual prior to purchase for more information on service warranties, extended use, towing and maintenance. Owner's manuals can be found at [keystonerv.com](http://keystonerv.com).



more product detail at  
[www.keystonerv.com/Passport](http://www.keystonerv.com/Passport)



## STANDARDS AND OPTIONS

<b>CHASSIS</b>	<b>INTERIOR FEATURES</b>	<b>SAFETY</b>
Engineered specifically for each floor plan	Residential-style furniture with premium fabric	Four-wheel electric brakes
Tube-style bumper w/sewer hose storage (GT Series only)	Convenience center with slide, lights, awning, water system controls, and 110V receptacle	Breakaway switch
Fully-welded outriggers	13,500 BTU A/C standard	Heavy duty safety chains with clasp
Cambered for added structural support	30,000 BTU furnace	Tinted safety glass windows
Extra support cross members	Ducted, in-floor heating (GT Series only)	Multiple emergency egress windows
Electric slide-out system	6-gallon gas/electric DSI water heater (17.8 gal/hr)	<b>SAFETY (CONTINUED)</b>
Enclosed, sealed and heated underbelly	Winterization-ready water system	GFI receptacles
<b>CONSTRUCTION</b>	Residential durable Armstrong® vinyl flooring	Carbon monoxide detector
Welded aluminum framed sidewalls	12V DVD/CD/AM/FM stereo, AUX input, Bluetooth and quality sound speakers (CD/DVD player N/A in Express)	Smoke alarm
Seamless, laminated gel-coated filon exterior walls	LED, flat-screen HDTV, standard	Fire extinguisher
High-density block foam insulation in sidewalls (R-7 insulation)	Residential light fixtures in slide room	Propane gas leak detector
Laminated aluminum framed floor 2" thick	Upgraded residential window treatments and valances	Deadbolt lock on entrance doors
One-piece, breathable Darco protective wrap	Residential-style interior doors	Manual override on slide system
R-11 high density block floor insulation	Upgraded leather furniture w/tri-fold sofa	Spare tire kit
Stamped galvanized 5" thick crowned rafters	LED interior lights	<b>WESTERN EDITION FEATURES</b>
One piece seamless Alpha Superflex TPO roof	Vaulted ceiling (GT Series only)	Snow load roofs
R-11 ceiling rolled fiberglass insulation	USB charging ports throughout	<b>OPTIONS</b>
<b>EXTERIOR FEATURES</b>	Heated and enclosed underbelly	15,000 BTU A/C-option
Insulated lockable radius baggage doors with hold backs	<b>KITCHEN</b>	Aluminum Wheels (SL Series only)
Insulated radius entrance door with screen door	6 cu. ft. double-door RV refrigerator (SL Series only)	50 AMP 2nd A/C Prep (For models longer than 30')*
Double entry steps at main door (SL Series only)	8 cu. ft. refrigerator (GT Series only)	
MORryde® Step Above™ entry steps (GT Series only)	Glass-top stove	
Heavy-duty front mechanical jack (power tongue jack on the GT Series)	Metal high-rise faucet	
Four (4) scissor-style stabilizer jacks	Microwave with carousel	
Two (2), 20 lb. propane bottles with flip-top cover	3-burner, high output range	
Dual battery rack over A-frame	Range hood	
Rain gutters with extended downspouts	Shaker style wood cabinets	
Electric adjustable awning	Gas oven (N/A 153ML, 175BH)	
Lighted exterior pass-through storage compartment w/motion light*	Seamless countertops	
Portable outdoor grill (select models), not all outside kitchen models	Stainless steel sink w/pull-down faucet	
Patio entrance light	Trash can storage (select models)	
Exterior shower w/ hot and cold taps	<b>BEDROOM (MAIN)</b>	
Front diamond plate	60"x 80" queen size bed (GT Series only)	
Molded fiberglass front cap w/KeyShield™ rock guard (GT Series only)	Quilted bed sheets	
Fold-away exterior grab handle (main door, GT Series only)	Oversized wardrobes	
Load equalization axles (spread axle design)	Nighttime reading lights	
Dexter® E-Z lube axles	Under-bed storage	
Exterior speakers	Bedside power outlets w/USB ports	
Exterior light at dump valves	<b>BATHROOM</b>	
15" aluminum wheels	Solid wood, custom-built medicine cabinet w/mirror	
15" radial tires	Tub surround with built-in shelves	
Aluminum step	Radius shower curtain	
Upgraded graphics package	Pedestal foot flush toilet	
Electric power tongue jack	12V power exhaust fan	
LED awning lights		
Black tank flush		
Satellite prep		
Solar prep		
Backup camera prep (GT series only)		
Friction hinge door at main entrance		

# BUILT FOR THE LONG HAUL



PRINT 12-2018

