

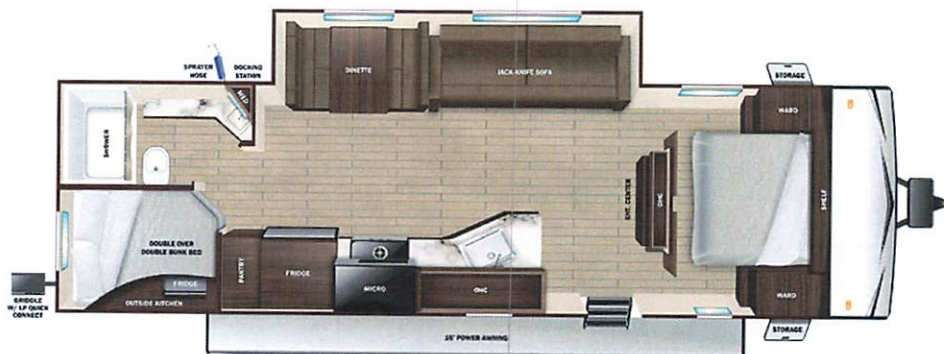


# Manufacturer's Suggested Retail Price \$41,117.00

TOTAL AMOUNT DOES NOT INCLUDE STATE AND LOCAL TAXES OR LICENSE FEES. THE PRICE SHOWN ABOVE MAY OR MAY NOT BE REPRESENTATIVE OF THE ACTUAL SELLING PRICE OF SIMILAR RECREATIONAL VEHICLES IN YOUR AREA.

IS VEHICLE

313.00  
n/c  
743.00  
943.00  
300.00  
n/c  
318.00  
n/c  
n/c



**UVW**  
6455 lbs



**Sleeps**



**Length**  
30' 8.38"

### DIMENSIONS

Exterior height:.....136.50"  
Exterior width:.....96.00"

### WEIGHTS

GVWR:.....7500  
GAWR (front):.....4400  
GAWR (rear):.....4400  
Approx. Gross Cargo Carrying Capacity (GCCC):.....1045

### TIRES

Tire size (front):.....ST235/75R15D  
Tire size (mid):.....  
Tire size (rear):.....ST235/75R15D

### CAPACITIES

Fresh water tank (gals.):...84.00  
Gray water tank (gals.):...32.50  
Black water/toilet tank (gals.):.....32.50  
Propane (lbs.):.....60  
Propane (gals.):.....14  
Water heater (gals.):.....6.00

### SEATING & SLEEPING

7.00

\*\*\*Some dimensions may be rounded and may vary from the actual dimensions\*\*\*  
\*\*\*Weights may be estimated calculations and may vary from the actual weight - refer to the vehicle weight labels for actual weights\*\*\*  
Floorplans, features and specifications are subject to change without notice.





# Highland

## RIDGE RV

### Open Range



Serial #: 58TBM0BP7R75L3213  
Model: 26BHS OPEN RANGE TT

Model Year: 2024 Dealer Name: PARRIS RV INC.

425 EAST 920 NORTH  
PAYSON, UT 84651  
USA

### Standard Equipment

### Optional Equipment

THE FOLLOWING ITEMS ARE STANDARD ON THIS MODEL  
AT NO EXTRA CHARGE

OPTIONAL EQUIPMENT INSTALLED ON T  
BY MANUFACTURER

- EXTERIOR**
- 120 GFCI protected receptacle
  - 5/8" main floor decking
  - 96" exterior width
  - Black front diamond plate protection
  - Exterior docking center (dual axle models)
  - Detachable power cords
  - Fiberglass insulation
  - Flexible LP lines
  - Galvanized wheel wells
  - Grab handle
  - Griddle with bumper bracket (26BHS, 27BH, 28BHS, 188BHS)
  - In-frame battery rack
  - Magnetic baggage door catches
  - Magnum Roof™ system
  - Marine grade exterior speakers (2)
  - PVC roofing membrane (limited lifetime warranty)
  - Rain guttering with molded drip spouts
  - Rear camera prep
  - Safety bumper with drain hose carrier and end caps
  - Self-adjusting electric brakes and E-Z Lube® axles
  - Thermal Seal- enclosed, insulated, and heated underbody and fully insulated roof with a PVC roofing membrane (dual axle models)
  - Tinted safety-glass windows throughout

- INTERIOR**
- 75 lb. ball bearing drawer guides
  - 81" interior height
  - AM/FM/Bluetooth® radio with indoor/outdoor zoned speakers
  - Closeable A/C vents
  - Flush floor slides with residential vinyl flooring
  - Foot flush toilet
  - Hardwood cabinet doors
  - LED interior lighting
  - Pleated blackout night shades
  - Pocket-screwed lumbercore cabinet construction
  - Pressed membrane kitchen countertops
  - Range hood
  - Residential high-rise kitchen faucet
  - Single basin under-mount kitchen sink
  - Storage below main bed
- CUSTOMER CONVENIENCE PACKAGE (Mandatory)**
- 13,500 BTU roof mounted A/C
  - 17" oven (dual axle models)
  - 2-burner range with glass cover (single axle models)
  - 3-burner range with glass cover (dual axle models)
  - Dome style digital TV antenna
  - Gas/electric water heater
  - Microwave
  - Powered awning with LED lighting
  - Powered bathroom vent
  - Nitrogen filled radial tires
  - Residential vinyl flooring throughout
  - Stabilizer jacks (4)
  - Solid swing down step (main)
  - Entrance door with window and shade prep
  - Water heater bypass
  - Xtend Solar I Package (200 watt solar panel with 30 amp controller)

- Base price  
USA STANDARDS  
CUSTOMER CONVENIENCE  
PACKAGE  
MOAB PACKAGE  
15,000 BTU AC  
30 AMP SERVICE  
FIBERGLASS SIDEWALL  
UPGRADED FRESH WATER TANK  
JACK KNIFE SOFA

UNIT TOTAL

41,

DEALER INSTALLED OPTION