



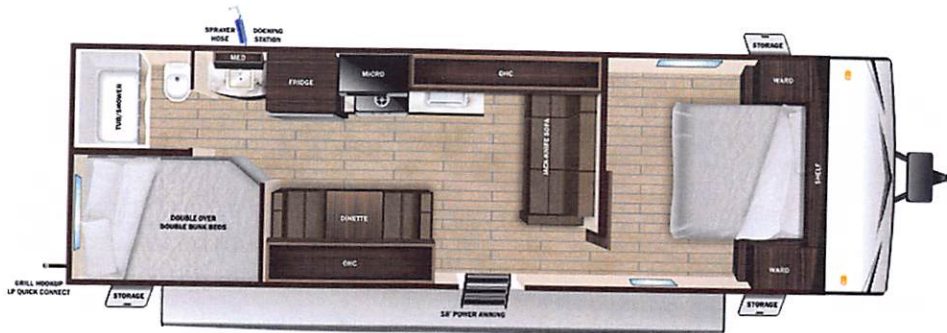
# Manufacturer's Suggested Retail Price

\$33,278.00

TOTAL AMOUNT DOES NOT INCLUDE STATE AND LOCAL TAXES OR LICENSE FEES. THE PRICE SHOWN ABOVE MAY OR MAY NOT BE REPRESENTATIVE OF THE ACTUAL SELLING PRICE OF SIMILAR RECREATIONAL VEHICLES IN YOUR AREA.

THIS VEHICLE

535.00  
n/c  
743.00  
n/c  
n/c  
n/c  
n/c



## UVW

4968 lbs



## Sleeps



## Length

29' 5.75"

### DIMENSIONS

Exterior height:.....127.00"  
Exterior width:.....96.25"

### WEIGHTS

GVWR:.....6850  
GAWR (front):.....3500  
GAWR (rear):.....3500  
Approx. Gross Cargo Carrying Capacity(GCCC):.....1882

### CAPACITIES

Fresh water tank (gals.):...42.00  
Gray water tank (gals.):...39.00  
Black water/toilet tank (gals.):...39.00  
Propane (lbs.):.....60  
Propane (gals.):.....14  
Water heater (gals.):.....6.00

### SEATING & SLEEPING

### TIRES

Tire size (front):.....ST205/75R14D  
Tire size (mid):.....  
Tire size (rear):.....ST205/75R14D

8.00

\*\*\*Some dimensions may be rounded and may vary from the actual dimensions\*\*\*  
\*\*\*Weights may be estimated calculations and may vary from the actual weight - refer to the vehicle weight labels for actual weights\*\*\*  
Floorplans, features and specifications are subject to change without notice.





# Highland

## RIDGE RV

# Open Range



Serial #: 58TBM0BN3S75F3068  
Model: 26BH OPEN RANGE TT

Model Year: 2025 Dealer Name: PARRIS RV INC.

4360 SOUTH STATE STREET  
MURRAY, UT 84107  
USA

### Standard Equipment

### Optional Equipment

THE FOLLOWING ITEMS ARE STANDARD ON THIS MODEL  
AT NO EXTRA CHARGE

OPTIONAL EQUIPMENT INSTALLED ON T  
BY MANUFACTURER

- EXTERIOR**
- 120 GFCI protected receptacle
  - 5/8" main floor decking
  - 96" exterior width
  - Black front diamond plate protection
  - Detachable power cords
  - Exterior docking center (dual axle models)
  - Fiberglass insulation
  - Flexible LP lines
  - Galvanized wheel wells
  - Grab handle
  - In-frame battery rack
  - Magnetic baggage door catches
  - Magnum Roof™ system
  - PVC roofing membrane (limited lifetime warranty)
  - Rain gutturing with molded drip spouts
  - Rear camera prep
  - Safety bumper with drain hose carrier and end caps
  - Self-adjusting electric brakes and E-Z Lube® axles
  - Thermal Seal- enclosed, insulated, and heated underbelly and fully insulated roof with a PVC roofing membrane (dual axle models)
  - Tinted safety-glass windows throughout

- INTERIOR**
- 10 cu. ft. 12V Refrigerator
  - 75 lb. ball bearing drawer guides
  - 81" interior height
  - Ceiling mount bluetooth® speaker
  - Flush floor slides with residential vinyl flooring (select models)
  - Foot flush toilet
  - Hidden hinge cabinet door hinges
  - LED interior lighting
  - Magnet cabinet catches
  - Pleated blackout night shades
  - Pocket-screwed lumbercore cabinet construction
  - Pressed membrane kitchen countertops
  - Range hood
  - Residential high-rise kitchen faucet
  - Single basin under-mount kitchen sink
  - Solid hardwood cabinet doors
  - Solid hardwood drawer fronts
  - Storage below main bed
  - USB charging port at beds and bunks

- CUSTOMER CONVENIENCE PACKAGE (Mandatory)**
- 13,500 BTU roof mounted A/C
  - 17" oven (dual axle models)
  - 2-burner range with glass cover (single axle models)
  - 3-burner range with glass cover (dual axle models)
  - Dome style digital TV antenna
  - Friction hinge entrance door with window and shade prep
  - Gas/electric water heater
  - Microwave
  - Nitrogen filled radial tires
  - Powered awning with LED lighting
  - Powered bathroom vent
  - Residential vinyl flooring throughout
  - Solid swing down step (main)
  - Stabilizer jacks (4-dual axle models, 2-single axle models)
  - Water heater bypass
  - Xtend Solar I Package (200 watt solar panel with 30 amp controller)

- Base price  
USA STANDARDS  
CUSTOMER CONVENIENCE  
PACKAGE  
STANDARD PACKAGE  
13,500 BTU AC  
METAL SIDEWALL  
STANDARD RIMS  
UPGRADED FRESH WATER TANK

UNIT TOTAL

33,

DEALER INSTALLED OPTION