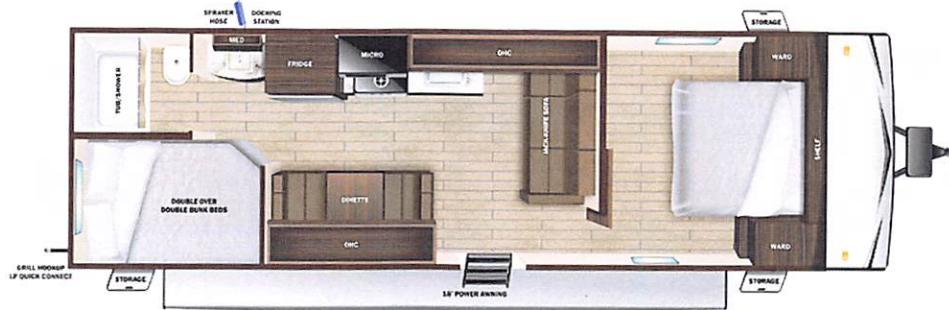


Manufacturer's Suggested Retail Price

\$34,628.00

TOTAL AMOUNT DOES NOT INCLUDE STATE AND LOCAL TAXES OR LICENSE FEES. THE PRICE SHOWN ABOVE MAY OR MAY NOT BE REPRESENTATIVE OF THE ACTUAL SELLING PRICE OF SIMILAR RECREATIONAL VEHICLES IN YOUR AREA.



THIS VEHICLE

585.00
n/c
743.00
n/c
300.00
n/c
n/c
n/c



UVW
4973 lbs



Sleeps



Length
29' 5.75"

DIMENSIONS

Exterior height:.....127.00"
Exterior width:.....96.25"

WEIGHTS

GVWR:.....6750
GAWR (front):.....3500
GAWR (rear):.....3500
Approx. Gross Cargo Carrying Capacity (GCCC):.....1777

CAPACITIES

Fresh water tank (gals.):...84.00
Gray water tank (gals.):...39.00
Black water/toilet tank (gals.):.....39.00
Propane (lbs.):.....60
Propane (gals.):.....14
Water heater (gals.):.....6.00

SEATING & SLEEPING

TIRES

Tire size (front):.....ST205/75R14D
Tire size (mid):.....
Tire size (rear):.....ST205/75R14D

28.00

Some dimensions may be rounded and may vary from the actual dimensions
Weights may be estimated calculations and may vary from the actual weight - refer to the vehicle weight labels for actual weights
Floorplans, features and specifications are subject to change without notice.





Highland

RIDGE RV

Open Range



Serial #: 58TBM0BN0R75F3068
Model: 26BH OPEN RANGE TT

Model Year: 2024 Dealer Name: PARRIS RV INC.

4360 SOUTH STATE STREET
MURRAY, UT 84107
USA

Standard Equipment

Optional Equipment

THE FOLLOWING ITEMS ARE STANDARD ON THIS MODEL
AT NO EXTRA CHARGE

OPTIONAL EQUIPMENT INSTALLED ON T
BY MANUFACTURER

EXTERIOR

- 120 GFCI protected receptacle
- 5/8" main floor decking
- 96" exterior width
- Black front diamond plate protection
- Exterior docking center (dual axle models)
- Detachable power cords
- Fiberglass insulation
- Flexible LP lines
- Galvanized wheel wells
- Grab handle
- Griddle with bumper bracket (26BHS, 27BH, 28BHS, 188BHS)
- In-frame battery rack
- Magnetic baggage door catches
- Magnum Roof™ system
- Marine grade exterior speakers (2)
- PVC roofing membrane (limited lifetime warranty)
- Rain gutting with molded drip spouts
- Rear camera prep
- Safety bumper with drain hose carrier and end caps
- Self-adjusting electric brakes and E-Z Lube® axles
- Thermal Seal- enclosed, insulated, and heated underbelly and fully insulated roof with a PVC roofing membrane (dual axle models)
- Tinted safety-glass windows throughout

INTERIOR

- 75 lb. ball bearing drawer guides
 - 81" interior height
 - AM/FM/Bluetooth® radio with indoor/outdoor zoned speakers
 - Closeable A/C vents
 - Flush floor slides with residential vinyl flooring
 - Foot flush toilet
 - Hardwood cabinet doors
 - LED interior lighting
 - Pleated blackout night shades
 - Pocket-screwed lumbercore cabinet construction
 - Pressed membrane kitchen countertops
 - Range hood
 - Residential high-rise kitchen faucet
 - Single basin under-mount kitchen sink
 - Storage below main bed
- CUSTOMER CONVENIENCE PACKAGE (Mandatory)**
- 13,500 BTU roof mounted A/C
 - 17" oven (dual axle models)
 - 2-burner range with glass cover (single axle models)
 - 3-burner range with glass cover (dual axle models)
 - Dome style digital TV antenna
 - Gas/electric water heater
 - Microwave
 - Powered awning with LED lighting
 - Powered bathroom vent
 - Nitrogen filled radial tires
 - Residential vinyl flooring throughout
 - Stabilizer jacks (4)
 - Solid swing down step (main)
 - Entrance door with window and shade prep
 - Water heater bypass
 - Xtend Solar I Package (200 watt solar panel with 30 amp controller)

Base price
USA STANDARDS
CUSTOMER CONVENIENCE
PACKAGE
STANDARD PACKAGE
15,000 BTU AC
METAL SIDEWALL
STANDARD RIMS
UPGRADED FRESH WATER TANK

30

UNIT TOTAL

34,6

DEALER INSTALLED OPTIONS