

# Highland

## RIDGE RV

## Mesa Ridge

Serial #: 58TCW0BV4P3F33058  
Model: 379FBS MESA RIDGE FW

Model Year: 2023 Dealer Name: PARRIS RV INC.

4360 SOUTH STATE STREET  
MURRAY, UT 84107  
USA



### Standard Equipment

### Optional Equipment

THE FOLLOWING ITEMS ARE STANDARD ON THIS MODEL  
AT NO EXTRA CHARGE

OPTIONAL EQUIPMENT INSTALLED ON  
BY MANUFACTURER

#### EXTERIOR

- 100" wide body frame
- 2" receiver hitch
- 3-20 lb. LP bottles
- 50 amp service
- ACCU-SLIDE™ slide system (42" deep 4-corner compression)
- Battery disconnect switch
- Brass hanger bushings with wet bolts
- Equa-Flex® axle suspension
- Exterior grill/griddle quick connect port
- Frameless windows
- Laminated block foam floor
- LevelLoc™ - 4 or 6 point automatic leveling with JT's Strong Arms®
- Marine grade exterior speakers (2)
- PVC roofing membrane (limited lifetime warranty)
- Rear roof access ladder
- Self-adjusting electric brakes
- Spare tire
- TuffShell™ -vacuum bonded laminated construction, reinforced with heavy-duty fiberglass and welded aluminum frames

#### FOUR SEASON PACKAGE (Mandatory)

- Double insulated baggage doors
- Ducted heat to underbelly with cold air return
- Enclosed cable operated gate valves
- Enclosed exterior docking station with black tank flush
- Heated and enclosed underbelly
- High performance furnace
- R-38 reflective foil insulation in ceiling and underbelly
- R-9 block foam insulation in sidewalls

#### INTERIOR

- 21 cu. ft. residential refrigerator
- 60" x 80" residential queen bed with storage below
- 75 lb. ball bearing drawer guides
- Cable and satellite prep
- Flush floor slides with residential vinyl flooring
- Glass shower door
- Hardwood ceiling soffit
- Hardwood slideout fascia
- Hardwood valances
- Large freestanding oven and 4-burner range
- LED interior lighting
- One-piece fiberglass shower
- Raised panel hardwood cabinet doors
- Residential convection microwave
- Roller day and night shades
- Table and chairs
- Theater seating with heat and massage
- USB ports in master bedroom
- VoiceLINK voice command system- controls lighting, heating and cooling along with TravelLINK®
- Wall controlled power vent (kitchen/living room area)
- Washer/dryer prep

#### EXECUTIVE PACKAGE (Mandatory)

- 13,500 BTU A/C with quiet residential return air-bedroom
- 15,000 BTU A/C with quiet residential return air-main living
- AM/FM/HDMI/USB/AUX Bluetooth® sound bar stereo with outdoor zoned speakers
- Cutting board and sink strainer
- Dome style digital TV antenna with Wi-Fi prep
- Interior convenience center light
- JBL® Aura Cube stereo with Bluetooth® and miZONE™ technology
- JBL® Premium indoor and outdoor multizone speakers
- Keypad-Alike® entry and baggage doors
- LED HDTV
- Motion sensor lighting in bedroom and hallway
- Painted fiberglass front cap with LED lighting
- Power awning with LED lighting
- Quick recovery gas/electric water heater
- Quick release fresh water drain
- Residential high-rise faucet with pull-down sprayer
- Single basin stainless steel under-mount kitchen sink
- Solar prep
- Solid swing-down entry steps
- Solid-surface kitchen countertops
- Stainless steel appliances
- TravelLINK® - Smart RV system that allows for Bluetooth® control of awnings, lighting, slides, heating, cooling and more
- USB/12V charging port

- Base price
- USA Standards
- Executive Package
- Four Seasons Protection Package
- No Heat Pump
- 21 Cu. Ft. 110 Volt Refrigerator
- No Generator Prep
- No Bedroom TV
- Windows Standard
- Power Fan Vent Bathroom
- TrailAir Air Ride Pin Box
- Rear Sofa
- King Bed

UNIT TOTAL

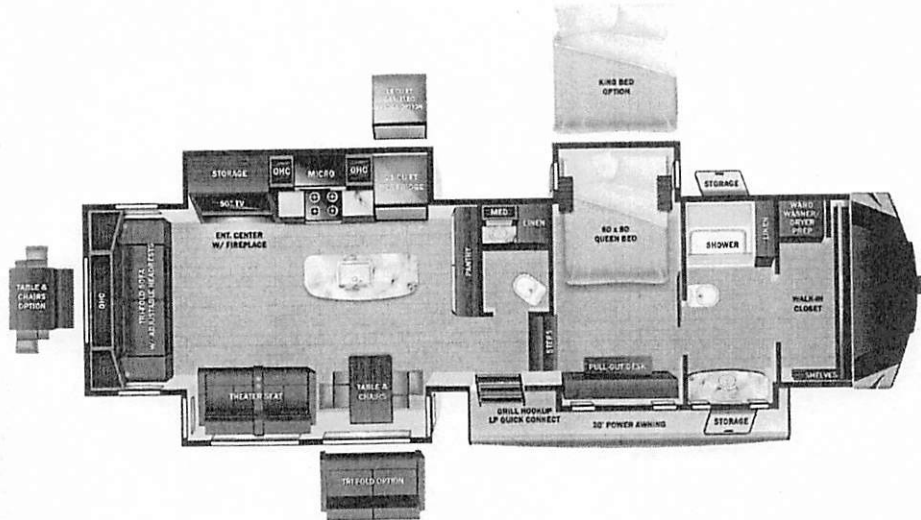
117

DEALER INSTALLED OPTIO

# Manufacturer's Suggested Retail Price

\$117,923.00

TOTAL AMOUNT DOES NOT INCLUDE STATE AND LOCAL TAXES OR LICENSE FEES. THE PRICE SHOWN ABOVE MAY OR MAY NOT BE REPRESENTATIVE OF THE ACTUAL SELLING PRICE OF SIMILAR RECREATIONAL VEHICLES IN YOUR AREA.



**UVW**  
12799 lbs



**Sleeps**



**Length**  
43' 0.69"

**DIMENSIONS**

Exterior height:.....156.88"  
Exterior width:.....100.00"

**WEIGHTS**

GVWR:.....15500  
GAWR (front):.....7000  
GAWR (rear):.....7000  
Approx. Gross Cargo Carrying Capacity (GCCC):.....2701

**CAPACITIES**

Fresh water tank (gals.):...75.00  
Gray water tank (gals.):...114.00  
Black water/toilet tank (gals):.....80.00  
Propane (lbs.):.....60  
Propane (gals.):.....14  
Water heater (gals.):.....10.00

**SEATING & SLEEPING**

**TIRES**

Tire size (front):.....ST235/85R16F  
Tire size (mid):.....  
Tire size (rear):.....ST235/85R16F

\*\*\*Some dimensions may be rounded and may vary from the actual dimensions\*\*\*

\*\*\*Weights may be estimated calculations and may vary from the actual weight

- refer to the vehicle weight labels for actual weights\*\*\*

Floorplans, features and specifications are subject to change without notice.



S VEHICLE

35.00  
n/c  
30.00  
50.00  
n/c  
n/c  
n/c  
n/c  
n/c  
43.00  
n/c  
25.00

3.00