



Highland

RIDGE RV

Mesa Ridge



Serial #: 58TCH0BV2N3F13060
Model: 378RBS MESA RIDGE FW

Model Year: 2022 Dealer Name: PARRIS RV INC.

4360 SOUTH STATE STREET
MURRAY, UT 84107
USA

Standard Equipment

Optional Equipment

THE FOLLOWING ITEMS ARE STANDARD ON THIS MODEL
AT NO EXTRA CHARGE

OPTIONAL EQUIPMENT INSTALLED ON
BY MANUFACTURER

EXTERIOR

- 2" Receiver Hitch
- 3-20lb. LP Bottles
- 50 Amp Service
- ACCU-SLIDE™ Slide System (42" Deep 4-Corner Compression)
- Self-Adjusting Electric Brakes
- Battery Disconnect Switch
- Brass Hanger Bushings with Wet Bolts
- Equa-Flex® Axle Suspension
- Frameless Windows
- Laminated Block Foam Floor
- LevelLoc™ - 4 or 6 Point Automatic Leveling with JT's Strong Arms®
- PVC Roofing Membrane (15 Year Limited Warranty/Non-Prorated)
- Roof Ladder
- Spare Tire

EXECUTIVE PACKAGE

- 13,500 BTU A/C with Quiet Residential Return Air - Bedroom
- 15,000 BTU A/C with Quiet Residential Return Air - Main Living
- 76" X 28" Entrance Door with Euro Latch & Swing Shot Screen Door
- Cutting Board & Sink Strainer
- Digital TV Antenna
- Interior Convenience Center Light
- Keyed-Alike® Entry & Baggage Doors
- LED HDTV
- Motion Sensor Lighting in Bedroom & Hallway
- Painted Fiberglass Front Cap with LED Lights
- Power Awning with LED Lighting, FLXguard® & Speakers
- Quick Recovery Gas/Electric Water Heater
- Quick Release Fresh Water Drain
- RidgeLINK™ - Bluetooth Control of Slides & Lighting
- Solar Prep
- Solid Surface Countertops in Kitchen
- Solid Swing-Down Entry Step
- Soundbar in Living Area
- Stainless Steel Appliances
- Stainless Steel Under-Mount Sink with High-Rise Faucet
- USB/12V Charging Port

INTERIOR

- 75lb. Ball Bearing Drawer Guides
- 80" Queen Bed
- Cable & Satellite Prep
- Day & Night Roller Shades
- Flush Floor Slides with Residential Vinyl Flooring
- Glass Shower Door
- Hardwood Valances
- Hardwood Ceiling Soffit
- Hardwood Slideout Fascia
- Large Freestanding Oven & 4-Burner Range
- LED Lighting in Ceiling
- Observation Camera Prep
- One-Piece Fiberglass Shower
- Raised Panel Hardwood Cabinet Doors
- Residential Convection Microwave
- Table & Chairs
- Theater Seating with Heat & Massage
- USB Ports in Master Bedroom
- Wall Controlled Power Vent (Kitchen/Living Room Area)
- Washer/Dryer Prep
- Wi-Fi Ready

FOUR SEASON PACKAGE

- Double Insulated Baggage Doors
- Ducted Heat to Underbelly with Cold Air Return
- Enclosed Cable Operated Gate Valves
- Enclosed Outside Docking Station with Black Tank Flush
- Heated & Enclosed Underbelly
- High Performance Furnace
- R-38 Reflective Foil Insulation Ceiling & Underbelly
- R-9 Insulation in Sidewalls

- Base price
- USA Standards
- Executive Package
- Four Seasons Protection Package
- RVIA
- 18 Cu. Ft. RV G/E Refrigerator
- No Generator Prep
- No Bedroom TV
- Windows Standard
- Power Fan Vent Bathroom
- No Pin Box
- 2 Additional Dinette
- Folding Chairs
- King Bed
- TV Trays (2)

10

UNIT TOTAL

111,9

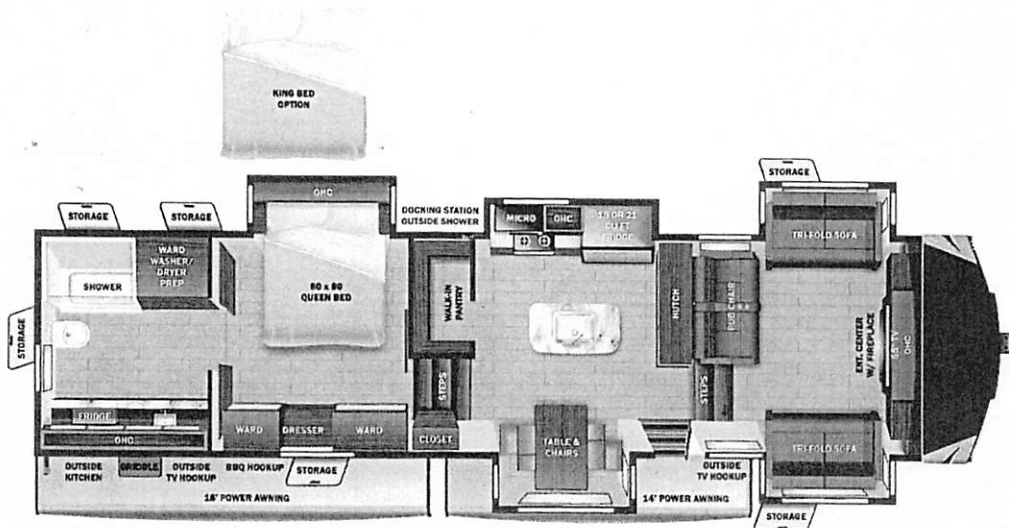
DEALER INSTALLED OPTIONS



Manufacturer's Suggested Retail Price

\$111,957.00

TOTAL AMOUNT DOES NOT INCLUDE STATE AND LOCAL TAXES OR LICENSE FEES. THE PRICE SHOWN ABOVE MAY OR MAY NOT BE REPRESENTATIVE OF THE ACTUAL SELLING PRICE OF SIMILAR RECREATIONAL VEHICLES IN YOUR AREA.



S VEHICLE

- 51.00
- n/c
- 30.00
- 50.00
- 35.00
- 93.00
- n/c
- n/c
- n/c
- n/c
- n/c
- 43.00
- 25.00
- 60.00



UVW
13008 lbs



Sleeps
Up to 6



Length
43' 0.25"

DIMENSIONS

Exterior height:.....157.38"
 Exterior width:.....100.00"

WEIGHTS

GVWR:.....15500
 GAWR (front):.....7000
 GAWR (rear):.....7000
 Approx. Gross Cargo Carrying Capacity (GCCC):.....2492

TIRES

Tire size (front):.....ST235/85R16F
 Tire size (mid):.....
 Tire size (rear):.....ST235/85R16F

CAPACITIES

Fresh water tank (gals.):...75.00
 Gray water tank (gals.):...80.00
 Black water/toilet tank (gals.):.....40.00
 Propane (lbs.):.....60
 Propane (gals.):.....14
 Water heater (gals.):.....10.00

SEATING & SLEEPING

Queen Bed:.....60 X 80

7.00

Some dimensions may be rounded and may vary from the actual dimensions
 Weights may be estimated calculations and may vary from the actual weight - refer to the vehicle weight labels for actual weights
 Floorplans, features and specifications are subject to change without notice.

