



# BOOST

TRAVEL TRAILERS & FIFTH WHEELS



# BOOST

# TRAVEL TRAILERS



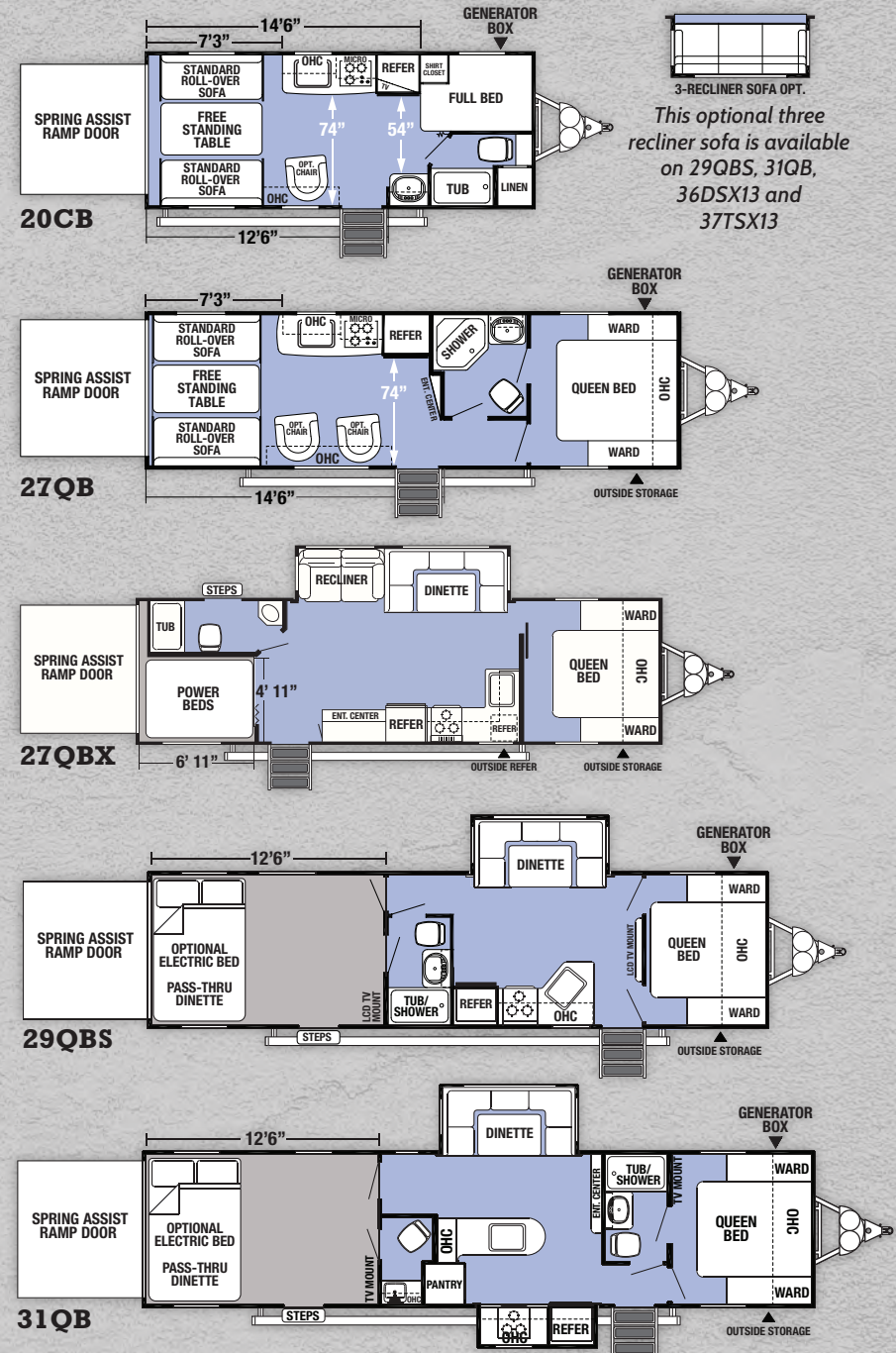
**27QB** This versatile electric bed with a Max Clearance pass-thru dinette can accommodate up to six people. With the push of a button, the electric bed raises up and out of the way, allowing full use of the living, dining and cargo areas.



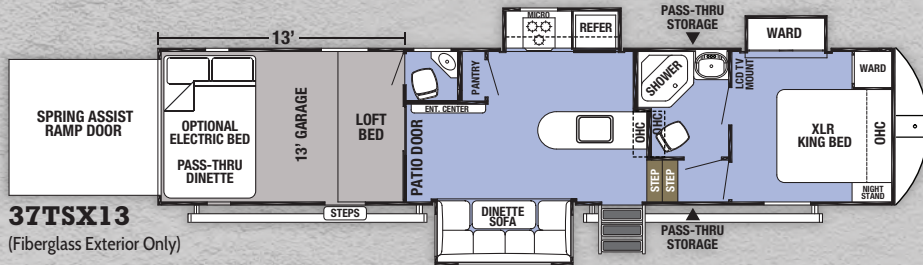
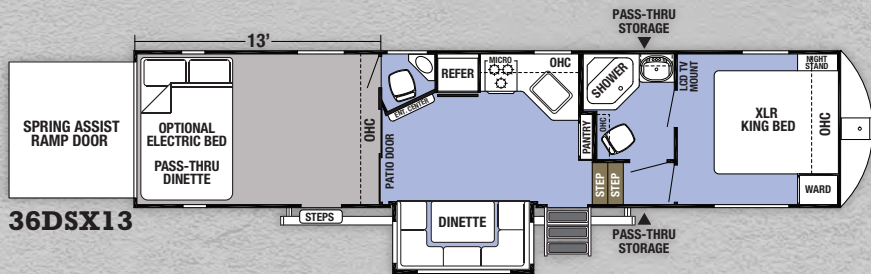
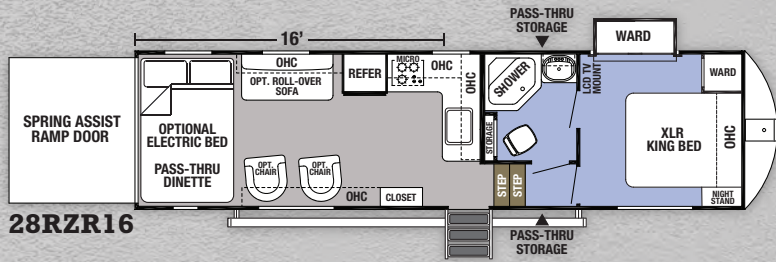
Boost travel trailer bedrooms offer a walk-around queen bed with dual wardrobes and abundant overhead cabinets. (N/A 20CB)



Most Boost travel trailer bathrooms are standard equipped with double entry doors.



# FIFTH WHEELS



Our 102" wide body construction maximizes interior living and cargo spaces. The entire Boost lineup is specifically designed to carry today's most popular side-by-sides, four wheelers, motorcycles, and all your gear for outdoor activities.

Bunk House

Garage



Boost fifth wheel bathrooms are standard equipped with a radius shower.

**37TSX13** This comfortable master bedroom has an XLR King size bed and a large wardrobe slideout.

## TRAVEL TRAILERS

## FIFTH WHEELS

MODEL	20CB	27QB	27QBX	29QBS	31QB	28RZR16	36DSX13	37TSX13
Dry Hitch Weight	853-lbs.	1082-lbs.	1238-lbs.	1214-lbs.	1465-lbs.	2090-lbs.	2333-lbs.	2958-lbs.
Unloaded Vehicle Weight	4955-lbs.	6385-lbs.	7479-lbs.	8449-lbs.	9320-lbs.	8565-lbs.	10046-lbs.	12687-lbs.
Cargo Carrying Capacity	2898-lbs.	3600-lbs.	3959-lbs.	2965-lbs.	4145-lbs.	5487-lbs.	4287-lbs.	4999-lbs.
Exterior Length	25'-0"	31'-0"	33'-7"	36'-10"	39'-3"	33'-2"	38'-8"	39'-9"
Exterior Height w/ AC	12'-5"	12'-5"	12'-5"	12'-5"	12'-5"	12'-5"	13'-5"	13'-5"
Exterior Width	102"	102"	102"	102"	102"	102"	102"	102"
Garage Length	14'-6"	14'-6"	6'-11"	12'-6"	12'-6"	16'	13'	13'
Grey Capacity	38-Gal.	38-Gal.	76-Gal.	38-Gal.	38-Gal.	38-Gal.	38-Gal.	38-Gal.
Black Capacity	38-Gal.	38-Gal.	38-Gal.	38-Gal.	76-Gal.	38-Gal.	76-Gal.	76-Gal.
Fresh Capacity	46-Gal.	46-Gal.	46-Gal.	46-Gal.	46-Gal.	100-Gal.	100-Gal.	100-Gal.
Awning	15'	15'	15'	15'	15'	15'	21'	12' & 12'

# STANDARDS & OPTIONS

## INTERIOR DECORS

- Sand
- INTERIOR STANDARDS**
- 6 Gallon Gas/Electric DSI Water Heater
- USB Charging Station
- Bluetooth Dual Zone AM/FM/CD/DVD Player
- 8 Cu. Ft. Gas/Electric Refrigerator
- 35,000 BTU Forced Air Ducted Furnace
- Ducted Air Conditioning
- Wardrobe Cabinets in Bedroom
- Foot Flush Toilet
- Plywood Decking
- Full Height Ceiling
- Real Wood Doors and Drawers
- Free Standing Dinette Table
- Screen Wall/Tent Wall
- Full Extension Kitchen Drawers (2)
- Deep Single Bowl Kitchen Sink
- Brushed Nickel Hardware
- Skylight Over Bath

- 13,500 BTU Air Conditioner
- 102" Wide Body Construction
- Radius Main Entry Door
- Enclosed Tanks
- Seamless EPDM Rubber Roof
- Powder Coated I-Beam Chassis
- Marine Grade External Speakers
- Self Adjusting Brakes
- Upgraded Main Entry Step

## EXTERIOR STANDARDS

- 13,500 BTU Air Conditioner
- 102" Wide Body Construction
- Radius Main Entry Door
- Enclosed Tanks
- Seamless EPDM Rubber Roof
- Powder Coated I-Beam Chassis
- Marine Grade External Speakers
- Self Adjusting Brakes
- Upgraded Main Entry Step

- Radial Tires
- 37TSX13 High Gloss Fiberglass Exterior Sidewall
- POPULAR OPTIONS**
- LED TV (Mandatory)
- 15K Main A/C IPO 13.5K
- 2nd 13.5K A/C (Requires 50AMP)
- 50 AMP Service (TT)
- 4.0 Onan Generator (TT - N/A with 50AMP)
- 5.5 Onan Generator (Requires 50AMP on TT)
- Electric Stabilizer Jacks (N/A - 20CB, 27QB)
- Industrial Garage Rubber Floor (TT)
- Electric Bed w/Max Clearance Pass-thru Dinette (TT)
- Electric Bed w/Max Clearance Pass-thru Dinette (FW)
- Ramp Door Patio System
- Roof Ladder - Collapsible
- Ultracold Weather Heated Holding Tank 12V Pads
- Euro Recliner Black Leather
- Sofa Slide IPO Dinette Slide (29QBS, 31QB, 36DSX13, & 37TSX13)
- 58" Steel Roll Over Sofa Door Side (28RZR16, 27QB)
- Highgloss Fiberglass Exterior Sidewall (TT)
- Highgloss Fiberglass Exterior Sidewall (FW) (Mandatory 37TSX13)
- 100 Gallon Fresh Water Tank Upgrade (TT)
- Alumafoil Insulation

## REV PACKAGE\*

- Convection Microwave
- 30 Amp Service w/Detachable Cord (TT Only)
- 50 Amp Service w/Detachable Cord (FW Only)
- Back-up Camera Ready
- Upgraded Bathroom Vent Fan
- Drop-in Cooktop w/Glass Cover
- External Fuel Cell w/Pump
- External LED Strip Lighting
- Friction Door Hinge
- Generator Prep
- Internal Accent LED Strip Lighting
- LED Interior Lights
- Outside TV Bracket and Hook-ups
- Power Awning
- Power Tongue Jack (TT Only)
- Pull-out Kitchen Faucet
- Ramp Light
- RVQ Quick Connect
- Solar Prep
- Decorative Vinyl Flooring
- Spare Tire
- Upgraded Wheels
- Wood Decorative Blinds
- Battery Disconnect
- 2,500 lb. Tie-downs
- Hot and Cold Outdoor Shower
- Enclosed Under Belly

**GVWR (Gross Vehicle Weight Rating)** - is the maximum permissible weight of the unit when fully loaded. It includes all weights, inclusive of all fluids, cargo, optional equipment and accessories. For safety and product performance do NOT exceed the GVWR.

**GAWR (Gross Axle Weight Rating)** - is the maximum permissible weight, including cargo, fluids, optional equipment and accessories that can be safely supported by a combination of all axles.

**UVW (Unloaded Vehicle Weight)\*** - is the typical weight of the unit as manufactured at the factory. It includes all weight at the unit's axle(s) and tongue or pin and LP Gas. The UVW does not include cargo, fresh potable water, additional optional equipment or dealer installed accessories.

\*Estimated Average based on standard build optional equipment.

**CCC (Cargo Carrying Capacity)\*\*** - is the amount of weight available for fresh potable water, cargo, additional optional equipment and accessories. CCC is equal to GVWR minus UVW. Available CCC should accommodate fresh potable water (8.3 lbs per gallon). Before filling the fresh water tank, empty the black and gray tanks to provide for more cargo capacity.

\*\*Estimated average based on standard build optional equipment.

Each Forest River RV is weighed at the manufacturing facility prior to shipping. A label identifying the unloaded vehicle weight of the actual unit and the cargo carrying capacity is applied to every Forest River RV prior to leaving our facilities. The load capacity of your unit is designated by weight, not by volume, so you cannot necessarily use all available space when loading your unit.

# BOOST

Find us on  
**Facebook**  
fb.com/XLRtoyhauler

## XLR Boost by Forest River

2421 Century Drive ■ Goshen, IN 46528 ■ Phone: 574-642-0438

E-mail: [XLInfo@forestriverinc.com](mailto:XLInfo@forestriverinc.com) ■ #XLRtoyhaulers

[www.forestriveraccessories.com](http://www.forestriveraccessories.com)

See XLR videos and virtual tours at [www.forestriverinc.com/XLR](http://www.forestriverinc.com/XLR)



YOUR XLR BOOST DEALER



## PRE-DELIVERY INSPECTION FACILITY

20,000 square feet of quality assurance. The bare essentials for a premium product. This state-of-the-art facility gives immediate daily feedback to production for quality assurance in every unit built.

## 24/7 EMERGENCY ROADSIDE ASSISTANCE WITH VEHICLE PURCHASE\*

TOWING  
JUMP-STARTS  
TIRE CHANGES  
FLUID DELIVERY  
LOCKOUT  
SERVICE

WINCH-OUT  
MOBILE MECHANIC  
TECHNICAL  
SUPPORT  
DEALER LOCATOR  
SERVICES



\*VALID FOR 1 YEAR FROM DATE OF PURCHASE

# FREE MEMBERSHIP

to Forest River Owners' Group

[www.forestriverfrog.com](http://www.forestriverfrog.com)



## Learn More

Scan this barcode using a QR Reader on your smart phone to learn more about Forest River.



A Berkshire Hathaway company.

## FOREST RIVER OWNER "DIGITAL KIT" APP

Now you can have your Owner's Manual with you wherever you are. Download our FREE App from the App Store or Google Play and you'll have the information right at your fingertips.



## CUSTOMER SATISFACTION



[www.ForestRiverBuyLocal.com](http://www.ForestRiverBuyLocal.com)

Actual towing capacity is dependent on your particular loading and towing circumstances, which includes GVWR, GAWR and GCWR, as well as adequate trailer brakes. Please refer to the Owners Manual of your vehicle for further information. All information contained in this brochure is believed to be accurate at the time of publication. However, during the model year, it may be necessary to make revisions and Forest River, Inc. reserves the right to make all such changes without notice, including prices, colors, materials, equipment and specifications as well as the addition of new models and the discontinuance of models shown in this brochure. Therefore, please consult with your Forest River dealer and confirm the existence of any materials, design or specifications that are material to your purchase decision. ©2019 XLR, a Division of Forest River, Inc., a Berkshire Hathaway company. All Rights Reserved. 2/19