

CRUISER **&** **CRUISER** **AIRE**



CROSSROADS
Recreational Vehicles

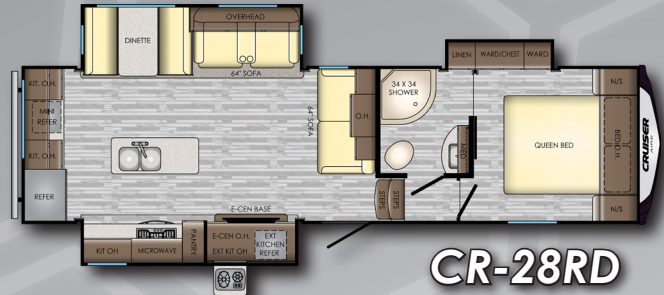


CRUISER

AIRE

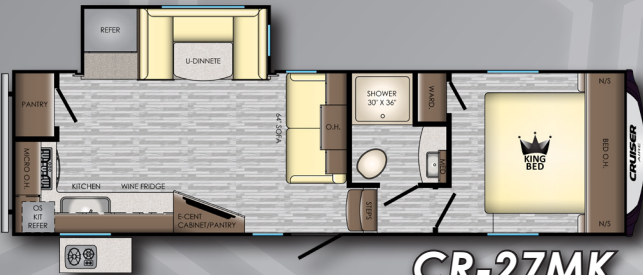


CR-24RL



CR-28RD

4 Point Leveling System Standard



CR-27MK

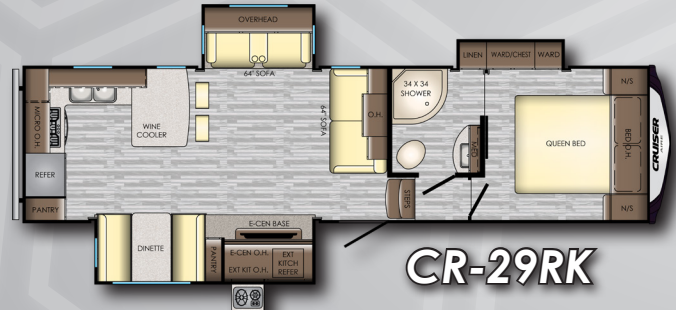


CR-29SI

4 Point Leveling System Standard



CR-30BH



CR-29RK

4 Point Leveling System Standard

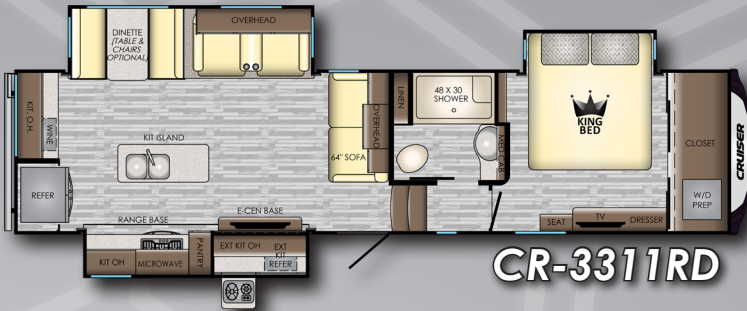
COMING SOON

COMING SOON

MODEL	24RL	27MK	28RD	29SI	29RK	30BH	TBD
DRY WEIGHT	6754	TBD	8454	8295	8470	7936	TBD
HITCH	1250	TBD	1479	1530	1480	1506	TBD
LENGTH	28' 9"	TBD	32' 7"	33' 3"	33' 3"	34' 3"	TBD
EXT. HEIGHT W/ A/C	12' 5"	TBD	12' 5"	12' 1"	12' 5"	12' 6"	TBD
FRESH WATER	60 Gal	TBD	60 Gal	60 Gal	60 Gal	60 Gal	TBD
BLACK WATER	44 Gal	TBD	44 Gal	44 Gal	44 Gal	88 Gal	TBD
GRAY WATER	44 Gal	TBD	88 Gal	88 Gal	88 Gal	88 Gal	TBD

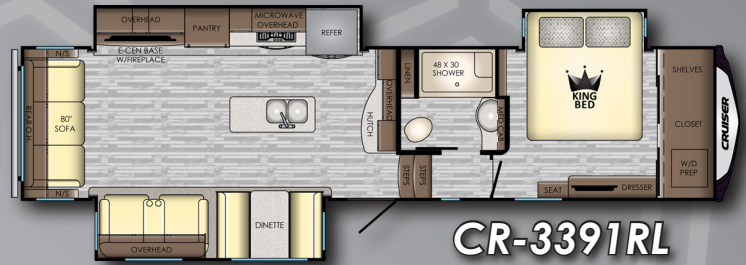
CRUISER

HIGH PROFILE



CR-3311RD

4 Point Leveling System Standard



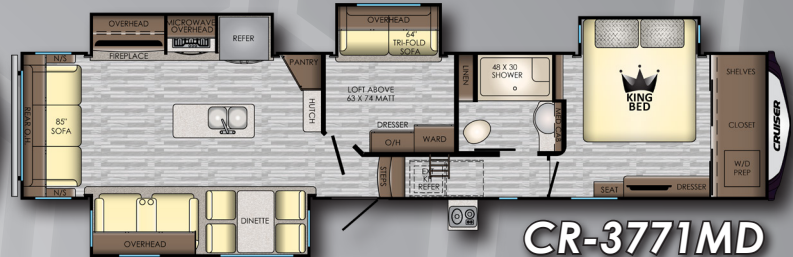
CR-3391RL

4 Point Leveling System Standard



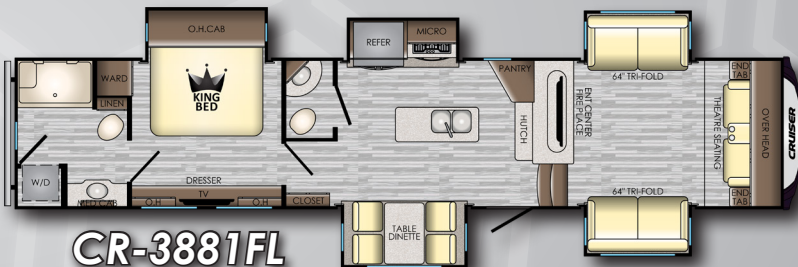
CR-3441WB

6 Point Leveling System Standard



CR-3771MD

6 Point Leveling System Standard



CR-3881FL

6 Point Leveling System Standard

COMING SOON



3311RD Kitchen



3311RD Living Area



3311RD Bedroom

* SEE WEBSITE FOR ADDITIONAL SPECS

	TBD	3311RD	3391RL	3441WB	3771MD	3881FL	TBD
	TBD	10654	10724	11020	TBD	TBD	TBD
	TBD	1626	1904	1884	TBD	TBD	TBD
	TBD	36' 7"	37' 10"	38' 9"	43' 3"	TBD	TBD
	TBD	12' 8"	12' 8"	12' 10"	TBD	TBD	TBD
	TBD	64 Gal	64 Gal	64 Gal	TBD	TBD	TBD
	TBD	44 Gal	44 Gal	44 Gal	TBD	TBD	TBD
	TBD	84 Gal	84 Gal	88 Gal	TBD	TBD	TBD

STANDARDS & OPTIONS

STANDARDS EXTERIOR

- Laminated Sidewalls
- Painted Front Cap w/ Clear Shield
- Total Truss Roof System
- Aerodynamic Front Cap
- One-Piece Seamless Super Flex Roof w/ 12 Yr. Warranty
- 30" Friction Hinge Entry Door
- Extendable Grab Handle at Main Entry
- EZ Lube Axles
- Nitrogen Filled Radial Tires
- Galvanized Wheel Well
- Outside Kitchen w/ LED light (VBM)
- Super-stor Pass Through Basement Storage
- Magnetic Slam Latch Baggage Doors
- Exterior Marine Grade Speakers
- Quick Recovery 6 Gal G/E DSI Water Heater (17.8 gal/hr)
- Outside Shower
- 50 Amp Service w/ 2nd A/C Prep
- Cable/SAT Prep
- Omni Directional Antenna w/ Wi-Fi Prep
- Roof Ladder
- 3/8" Roof Decking (Secured with Screws)
- Fully Walkable Roof
- 5 Sided Aluminum Construction
- Elec. Rear Stabilizer Jacks (24RL,27MK,30BH)
- Spring Loaded Pull Pins on Front Jacks
- Battery Disconnect Switch
- Dark Tinted Safety Glass Windows
- 4 Point Leveling System (28RD,29RK,29SI)

STANDARD INTERIOR

- Lumber Core Screwed Stile Cabinetry Construction
- 70lb Full Extension Steel Ball Bearing Guides
- Solid Wood Drawer Construction
- Hardwood Maple Cabinet Doors
- 40" Booth Dinette
- Decorative Back Splash
- 11 ft³ 12 Volt Refrigerator
- Pantry (Most models)
- Solid Surface Kitchen Countertops
- Stainless Steel Appliances
- High Rise Kitchen Faucet - Pullout
- Single Bowl Stainless Steel Kitchen Sink w/ Cover
- Maximum Lino
- Tri-fold Hide a Bed Sofa
- Over Head Cabinet in Slide Out
- Decorative Slide Fascias
- Water Heater Bypass Kit
- EZ Winterization Kit
- 55 Amp Converter w/ Distribution Center

- 12-Volt Bath Power Vent
- Bath Skylight
- Built In Medicine Cabinet
- Heated Pass Through Storage
- Porcelain Toilet w/ Foot Flush
- Under Bed Storage
- Plywood Bed Base w/ Strut Assist
- Spacious Bedroom Closets
- Fire Extinguisher
- 12 Volt Charging Station
- Spare Tire - Undermount
- Thomas Payne Power Theater Seats
- 40" LED TV
- 5,100 BTU Fireplace (VBM)
- 15,000 BTU A/C

OPTIONS

- 2nd A/C in Bedroom
- Free Standing Table & Chairs

SELECT PACKAGE MANDATORY

- Aluminum Wheels
- Black Tank Flush
- Power Awning w/ LED Lights
- Friction Hinge Entrance Doors
- LED Interior Lights
- Smoke Detector
- LP Detector
- Decorative Bedspread
- 30# LP Bottles
- AM/FM/DVD/CD Stereo w/ Bluetooth & HDMI
- Backup Camera Prep
- Solar Prep
- Secure Stance Steps
- Flip Up Bike Rack
- 30" Microwave
- Furrion Appliances "Chef Collection"

"EXTREME WEATHER PACKAGE"

- Upgrade Insulation
- Heat Barrier - Reflective Foil
- Enclosed & Heated Underbelly
- Furnace - 30,000 BTU

*VBM - Varies by Model

CRUISER HP UPGRADES

- 50" LED HDTV
- Furrion Appliances "Chef Collection"
- 18 ft³ Residential Refer or 12 ft³ Gas/Elec.
- 4/6 Point Leveling System (VBM)
- 16" Aluminum Wheels
- Raised Panel Cabinet Doors
- Theater Seating "Power"
- King Bed Slide
- 15,000 BTU A/C
- 35,000 BTU Furnace
- Flip Up Bike Rack
- 6,000 lb. Axles
- 50 Amp Service
- 5 Sided Aluminum Construction
- Roller Shades
- Wood Window Trim
- Washer/Dryer Hookups
- Heated Pass Through Storage
- Upgraded Convenience Center
- BeauFlor - Main & Upper Deck
- 10 Gal Water Heater

DECORS



OUR STANDARD IS LOADED



www.crossroadsrv.com • 1140 W. Lake St Topeka, IN 46571 • (260) 593 - 3850

DISCLAIMER: Product information is as accurate as possible as of the date of publication of this brochure. All features, floor plans, and specifications in this brochure are subject to change without notice. Please also consult CrossRoads' web site at www.crossroadsrv.com for more current product information and specifications. Tow Vehicle Disclaimer. CAUTION: Owners of CrossRoads recreational vehicles are solely responsible for the selection and proper use of tow vehicles. All customers should consult with a motor vehicle manufacturer or their dealer concerning the purchase and use of suitable tow vehicles for CrossRoads products. CrossRoads disclaims any liability or damages suffered as a result of the selection, operation, use or misuse of a tow vehicle. CROSSROADS' LIMITED WARRANTY DOES NOT COVER DAMAGE TO THE RECREATIONAL VEHICLE OR THE TOW VEHICLE AS A RESULT OF THE SELECTION, OPERATION, USE OR MISUSE OF THE TOW VEHICLE. REFERENCE CROSSROADS RV COMPANY OWNERS MANUAL FOR LIMITED WARRANTY DETAILS. *Length is defined as the distance from the centerline of hitch pin/coupler to rear bumper of trailer.

Sept. 2018