



Wildcat Maxx

"BUILT IN THE NORTHWEST FOR THE NORTHWEST."

1/2 TON TRAVEL TRAILERS & FIFTH WHEELS



FIND THE HIDDEN ADVENTURE THAT AWAITS YOUR FAMILY – GO WEST WITH WILDCAT MAXX

Wildcat Maxx 1/2 TON TRAVEL TRAILERS

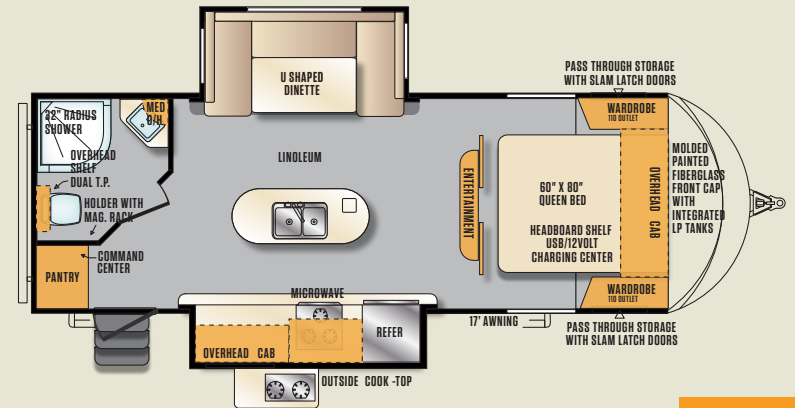


Cobblestone interior with light plank flooring

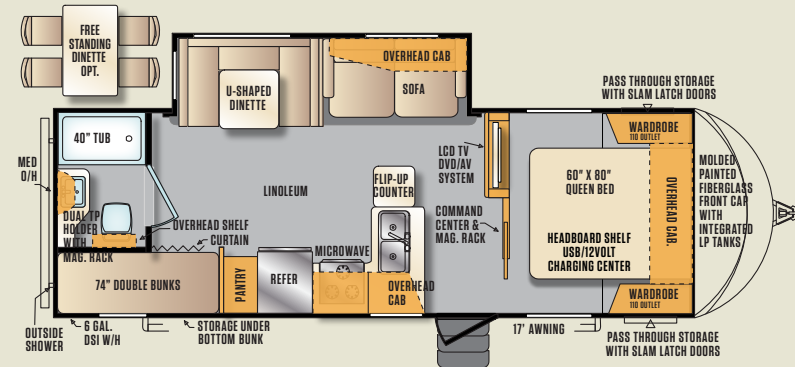
FEATURES INCLUDE:

- Solar prep
- Large LCD HDTV
- Back-up camera prep
- 12 volt heat pads on all holding tanks
- Complete interior & exterior LED lighting
- Vented Attic
- 35k BTU furnace
- Bluetooth stereo
- 60"x80" Parklane Queen Euro-Top Mattress - Choose to Sleep Better
- Battery disconnect
- Electric Awning with LED Patio Strip Lighting
- Maxx coat rack
- Stainless steel appearance appliances
- 8 function LCD remote control touch pad
- Aluminum framed & vacuum bonded construction
- All Seasons Insulation Package
- USB charging stations
- Electric stabilizer jacks
- Electric tongue jack
- Radius crowned interior ceiling

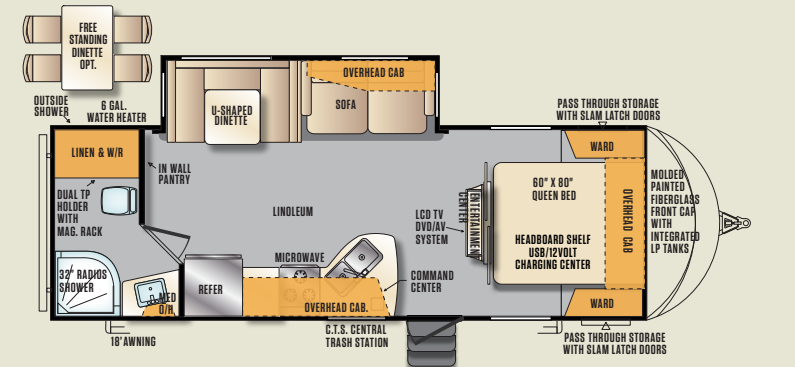
	T23DKS	T26BHS	T26FBS	T28RBX	T28RKX	T29RLX	T30DBH	T32BHXS	T32TSX
EXTERIOR LENGTH	26' 4"	29' 10"	29' 11"	33' 6"	33' 3"	34' 3"	35' 1"	36' 10"	37' 8"
EXTERIOR HEIGHT W/ AC	11' 4"	11' 4"	11' 4"	11' 4"	11' 4"	11' 4"	11' 4"	11' 4"	11' 4"
EXTERIOR WIDTH	8'	8'	8'	8'	8'	8'	8'	8'	8'
FRESH CAPACITY (GAL)	67	67	67	67	67	67	67	67	67
GREY CAPACITY (GAL)	31	31	62	108	62	62	70	85	108
BLACK CAPACITY (GAL)	39	31	31	54	31	31	31	54	54
AWNING SIZE (FT)	17'	17'	19'	19'	18'	18'	18'	16'	13'
DRY HITCH WEIGHT (LB.)	823	787	731	898	935	998	1,067	962	1,255
UNLOADED VEHICLE WEIGHT (LB.)	6,454	6,624	6,730	7,631	7,412	8,045	7,757	8,571	9,050
GVWR W/BRAKES	10,983	10,947	10,891	11,298	11,095	11,398	11,263	11,362	11,655
CARGO CARRYING CAPACITY	4,529	4,323	4,161	3,667	3,683	3,353	3,479	2,791	2,605



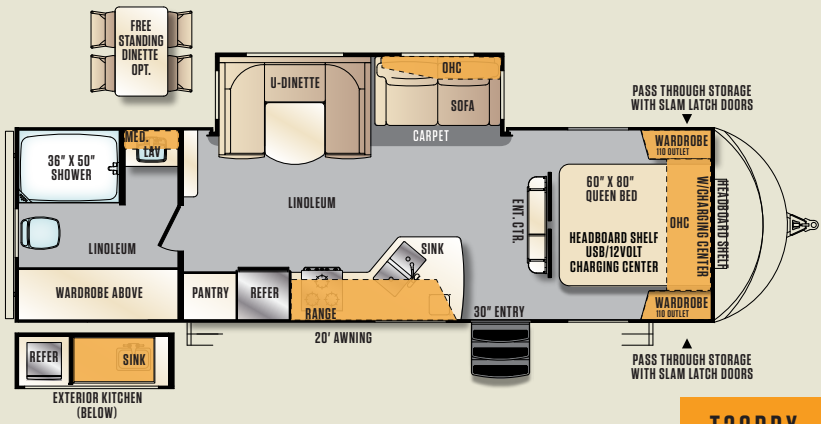
T23DKS



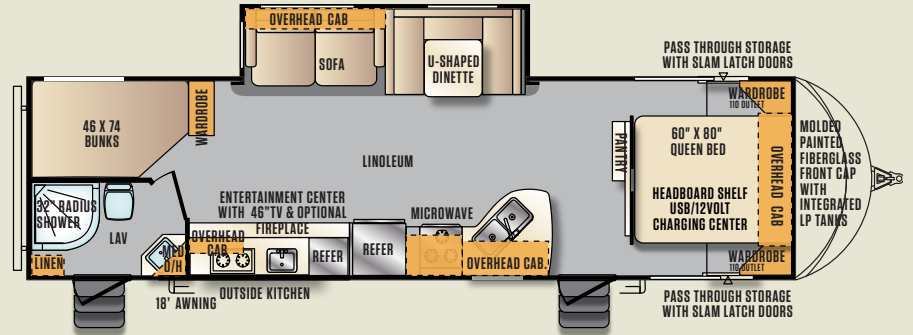
T26BHS



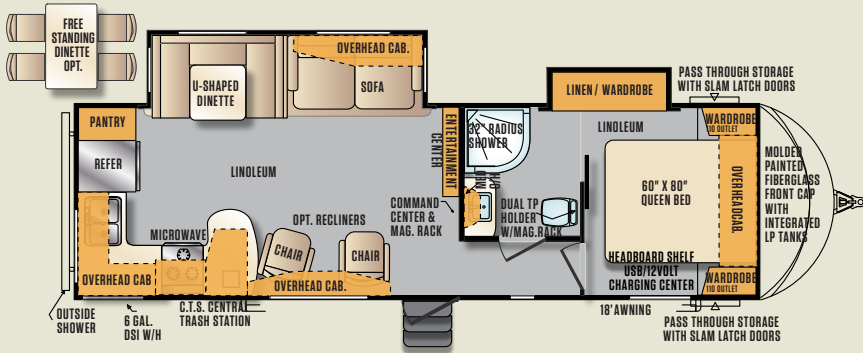
T26FBS



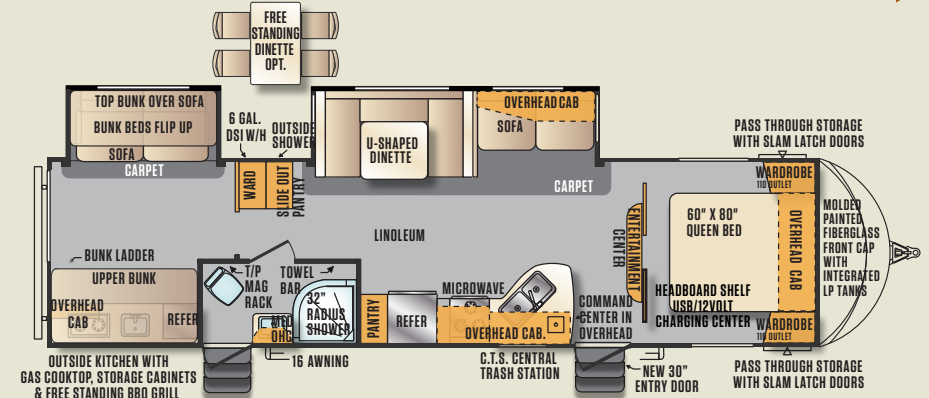
T28RBX



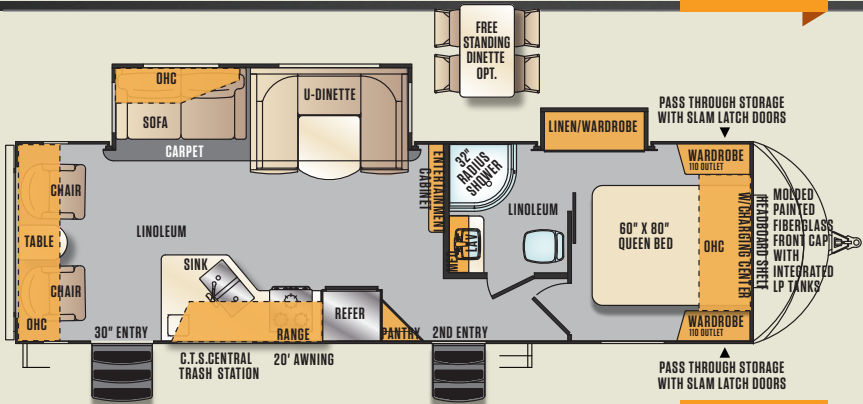
T30DBH



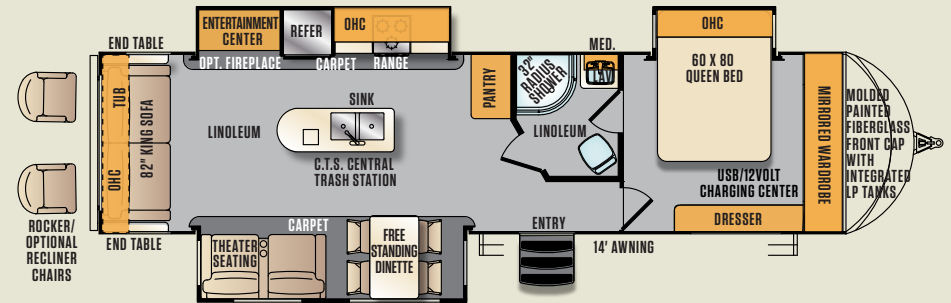
T28RKX



T32BHXS



T29RLX



T32TSX

Wildcat

1/2 TON FIFTH WHEELS

Maxx

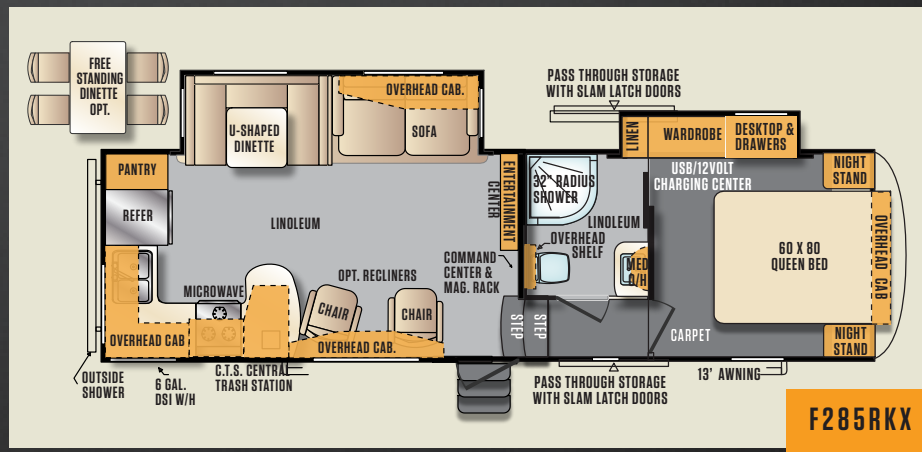


F250RDX shown in Mocha Interior & Optional Wood Plank Flooring

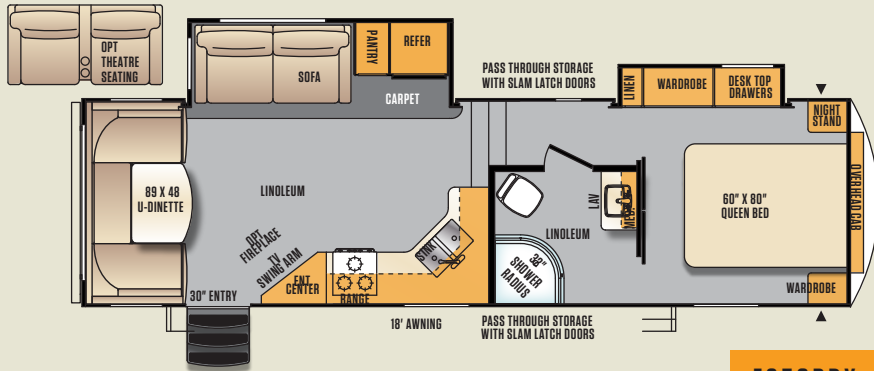
FEATURES INCLUDE:

- Large LCD TVs on all models
- Universal roof mounted solar prep
- Back-up camera prep
- 12 Volt Heat Pads on all Holding Tanks
- Complete interior & exterior LED lighting
- Vented attic
- 35k BTU furnace
- Bluetooth stereo
- 60" x 80" Parklane Queen Euro-Top Mattress – Choose to Sleep Better
- Battery disconnect
- Electric Awning with LED Patio Strip Lighting
- Maxx coat rack
- Stainless steel appearance appliances
- Shaker style real hardwood cabinets with hidden hinges
- 8 function LCD remote control touch pad
- Aluminum framed vacuum bonded construction
- All Seasons Insulation Package
- Electric Stabilizer Jacks
- USB Charging Stations

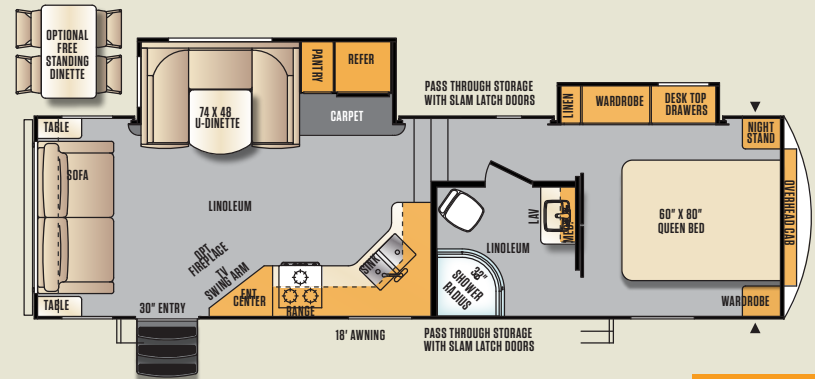
	F250RDX	F252RLX	F262RGX	F272RLX	F285RKX	F295RSX	F312BHX
EXTERIOR LENGTH	321"	321"	317"	314"	321"	336"	357"
EXTERIOR HEIGHT W/ AC	12'10"	12'10"	12'7"	12'10"	12'10"	12'10"	12'6"
EXTERIOR WIDTH	8'	8'	8'	8'	8'	8'	8'
FRESH CAPACITY W/ WATER HEATER (GAL)	87	87	87	87	87	87	87
GREY CAPACITY (GAL)	54	54	108	108	85	91	108
BLACK CAPACITY (GAL)	54	54	54	54	54	54	54
AWNING SIZE (FT)	18'	18'	17'	18'	18'	13'	17'
DRY HITCH WEIGHT (LB.)	1,456	1,465	1,594	1,430	1,435	1,670	1,629
UNLOADED VEHICLE WEIGHT (LB.)	8,248	8,248	8,268	8,553	8,040	9,607	8,879
GVWR W/BRAKES	11,865	11,865	11,754	11,590	11,835	11,830	11,789
CARGO CARRYING CAPACITY (LB.)	3,617	3,617	3,486	3,057	3,795	2,223	2,851



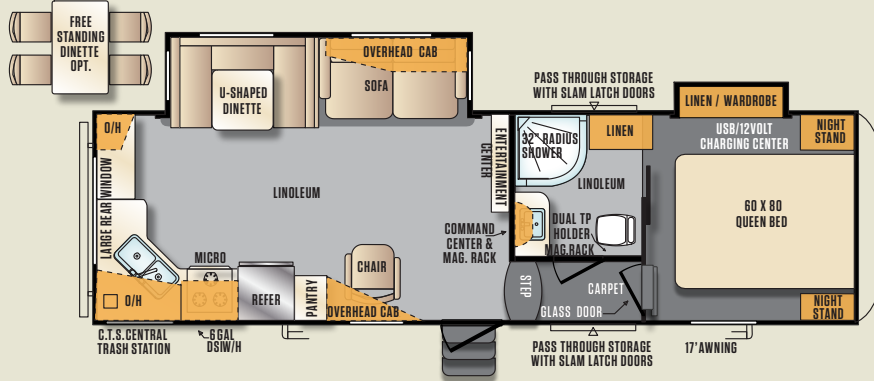
F285RKX



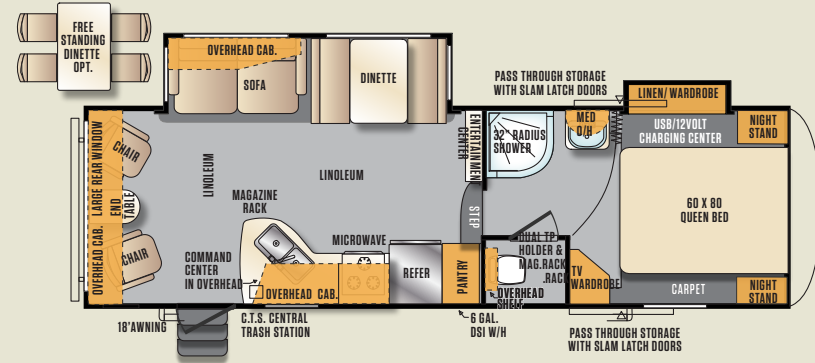
F250RDX



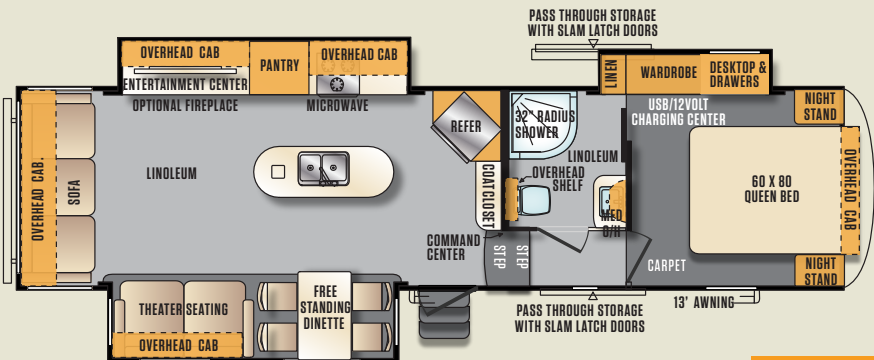
F252RLX



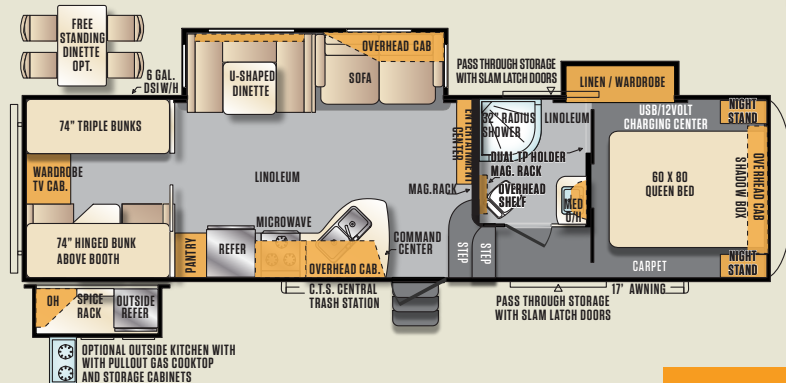
F262RGX



F272RLX



F295RSX



F312BHX

Wildcat Maxx

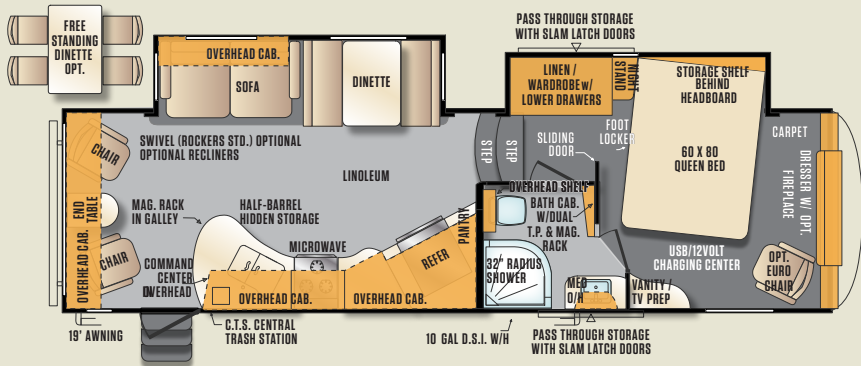
STANDARD FIFTH WHEELS



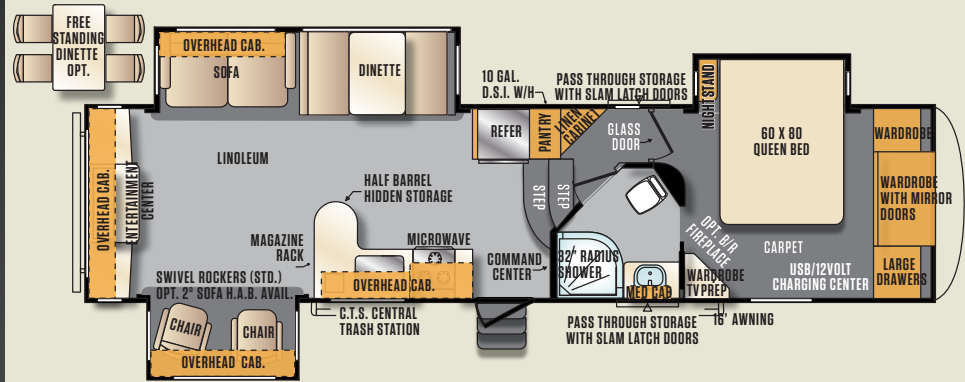
Shown with Optional Garden Room Windows w/Free Standing Table & Chairs and Solid Surface Counters in Cobblestone Interior & Wood Plank Flooring

FEATURES INCLUDE:

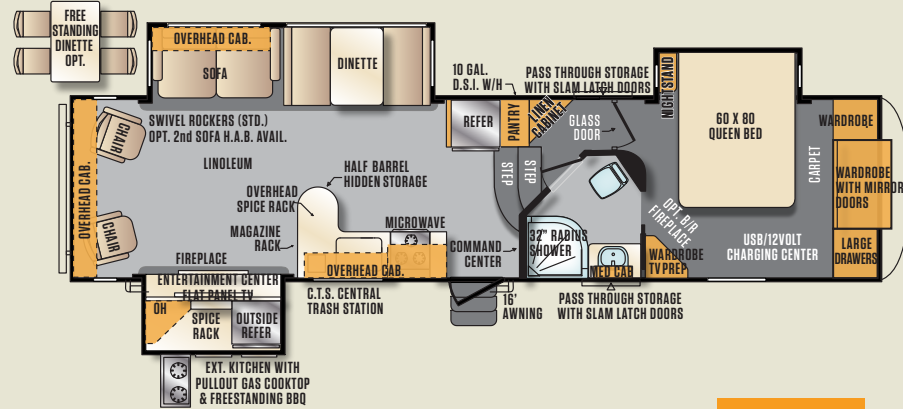
- Large LCD TVs on all models
- Samsung® Staron solid surface counters (kitchen only)
- Universal roof mounted solar prep
- Back-up camera prep
- 12 Volt Heat Pads on all Holding Tanks
- Complete interior & exterior LED lighting
- Vented attic
- 35k BTU furnace
- Bluetooth stereo
- 60"x80" Parklane Queen Euro-Top Mattress - Choose to Sleep Better
- Battery disconnect
- Electric Awning with LED Patio Strip Lighting
- Maxx coat rack
- Stainless steel appearance appliances
- 8' cu. ft. refrigerator
- Solid surface counters
- 16" 'E' range tires with custom aluminum wheels
- 8 function LCD remote control touch pad
- Aluminum framed & vacuum bonded construction
- All Seasons Insulation Package
- Fantastic fan
- 10lon DSI water heater



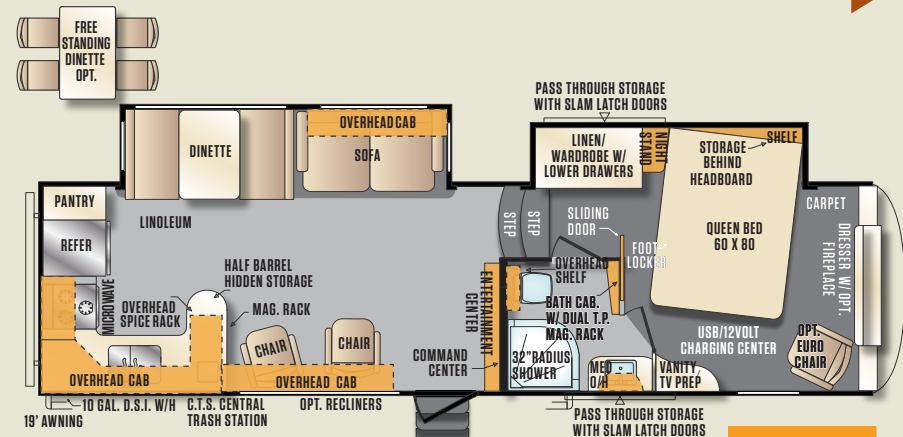
F302RL



F313RE



F317RL



F322RK



	F302RL	F313RE	F317RL	F322RK
EXTERIOR LENGTH	35'3"	37'8"	37'8"	36'
EXTERIOR HEIGHT W/ AC	12'5"	12'10"	12'10"	12'3"
EXTERIOR WIDTH	8'	8'	8'	8'
FRESH CAPACITY W/ WATER HEATER (GAL)	91	91	91	91
GREY CAPACITY (GAL)	108	108	108	108
BLACK CAPACITY (GAL)	54	54	54	54
AWNING SIZE (FT.)	19'	16'	16'	19'
DRY HITCH WEIGHT (LB.)	1,595	1,710	1,769	1,690
UNLOADED VEHICLE WEIGHT (LB.)	8,854	10,374	10,493	9,149
GVWR W/BRAKES	13,595	13,710	13,769	13,690
CARGO CARRYING CAPACITY	4,741	3,336	3,276	4,541

Wildcat Maxx

POPULAR FEATURES



60"x80" True Queen Pillow-top mattress with large Wardrobe Slide



Optional garden room windows



Wardrobe slide on all 1/2 ton fifth wheel models



Island kitchen with stainless steel range hood



Large radius shower



Large HDTVs in every entertainment center (Optional fireplace shown)

Wildcat Maxx

FEATURES & AVAILABLE OPTIONS

LOOK AT ALL THESE GREAT ADD-ONS FOR YOUR PURCHASE

STANDARD

8-Function Touchscreen Remote
LINC® 8-FUNCTION
TOUCHSCREEN REMOTE



STANDARD

parklane
MATTRESSES



Parklane Queen Euro-Top Mattress –
Choose to Sleep Better

Camera System
BACK-UP CAMERA PREP WITH
OPTIONAL CAMERA SYSTEM
AVAILABLE



OPTIONAL

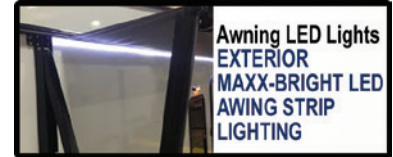
"Maxx Travel Rack"
250 lb Load Capacity



Keyless Entry
NUMERIC KEYPAD
SECURITY SYSTEM



Stainless Appliances
HIGH END STAINLESS
APPLIANCES



Awning LED Lights
EXTERIOR
MAXX-BRIGHT LED
AWNING STRIP
LIGHTING



Sanitation Maintenance
BLACK TANK FLUSH



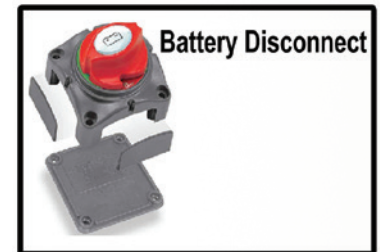
Power Tongue Jack
TRAVEL TRAILERS ONLY



Electric Stabilizer Jacks
FRONT AND REAR
ELECTRIC
STABILIZER JACKS



Maxx Coat Rack



Battery Disconnect

Roadside Assistance
24 HOUR SECURITY

Coach-Net[®]
RV Technical & Roadside Assistance

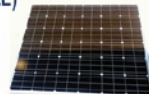


Outside Shower
System

LED Lights
MAXX BRIGHT COMPLETE COACH
LED LIGHT PACKAGE



Solar Prep
(OPTIONAL 200W SOLAR
PANELS AVAILABLE)
UP TO 400W



Wildcat Maxx

STANDARD & OPTIONAL FEATURES

LIVING ROOM

- Extra large booth dinette with storage under & dual pedestal table
- Tri-fold sofa / hide-a-bed sleeper sofa
- Large panoramic picture window at all dinettes
- Overhead cabinets in slide room (Dinner plate depth)
- Pleated night shades
- AM/FM/CD/DVD/USB/AV system with remote and bluetooth technology
- RCA plugs for game systems or digital cameras
- Taller 6' high slide out height (1/2 ton fifth wheels)
- Taller 6' 4" high slide out height (standards fifth wheels)
- Satellite & cable TV hookups
- 12v LED decorative lighting in slide-outs
- High back, extra large swivel rocking chairs (select models)
- Slider windows at ends of slide-outs
- Maxx bright complete interior LED lighting
- Residential carpeting with stain guard
- Magazine rack
- Command center with monitor panel
- Surround sound speakers
- Wall clock

EXECUTIVE KITCHEN

- Residential shaker-style hardwood cabinet doors
- Residential hidden hinges
- Brushed nickel finish door and drawer hardware
- Stainless appliances
- Residential fully-extension steel ball-bearing drawer guides
- Storage above refrigerator (most models)
- Upgraded microwave oven
- Brushed nickel pull-out residential style metal high rise faucet with optional solid surface counters
- 8 cu. ft. refrigerator (included standard fifth wheels)
- Extra large dual basin kitchen sink with flush mount dual sink covers

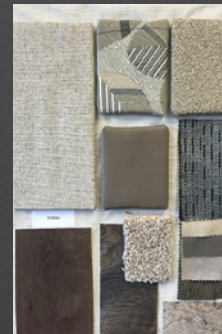
- Deep storage overhead kitchen cabinets
- Extra large pots and pans draws (most models)
- Toe kicks in kitchen cabinet base
- Glued down residential Trekk® linoleum
- 22" oven and 3-burner range with core ad built in knife rack
- Residential style range vent with light and fan
- Paper towel rack
- Cutlery drawer
- Kitchen wall border
- Cutting board
- Knife rack
- C.T.S. (Central Trash System) (most models)

BATHROOM

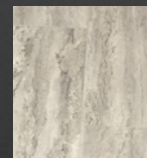
- Porcelain toilet with foot pedal flush
- Build in wood medicine cabinet
- GFI receipts in bathroom
- Residential shower surround with radius glass shower doors
- Skylight in shower
- Power vent fan
- Built-in wood dual toilet paper holder with magazine rack
- Soap dish
- Tooth brush holder
- Dual towel racks
- Radius glass shower doors

BEDROOM

- Pillow-top residential queen bed
- Full stand-up height in all bedrooms
- Flat floor bedrooms in all fifth wheels (No more steps on side of bed)
- Gas struts to lift bed for under-bed storage
- Fully finished bed bases
- Complete led lights including reading lights
- Upgraded residential queen-sized bedspread and headboard
- Bedroom roof vent



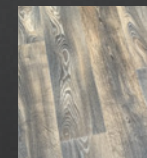
Pebble



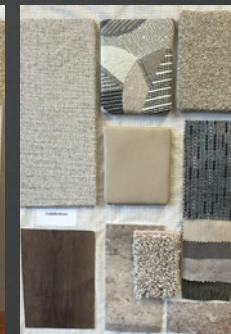
Trekk Vinyl Tile Flooring



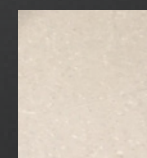
Cappuccino



Trekk Vinyl Woodgrain Flooring



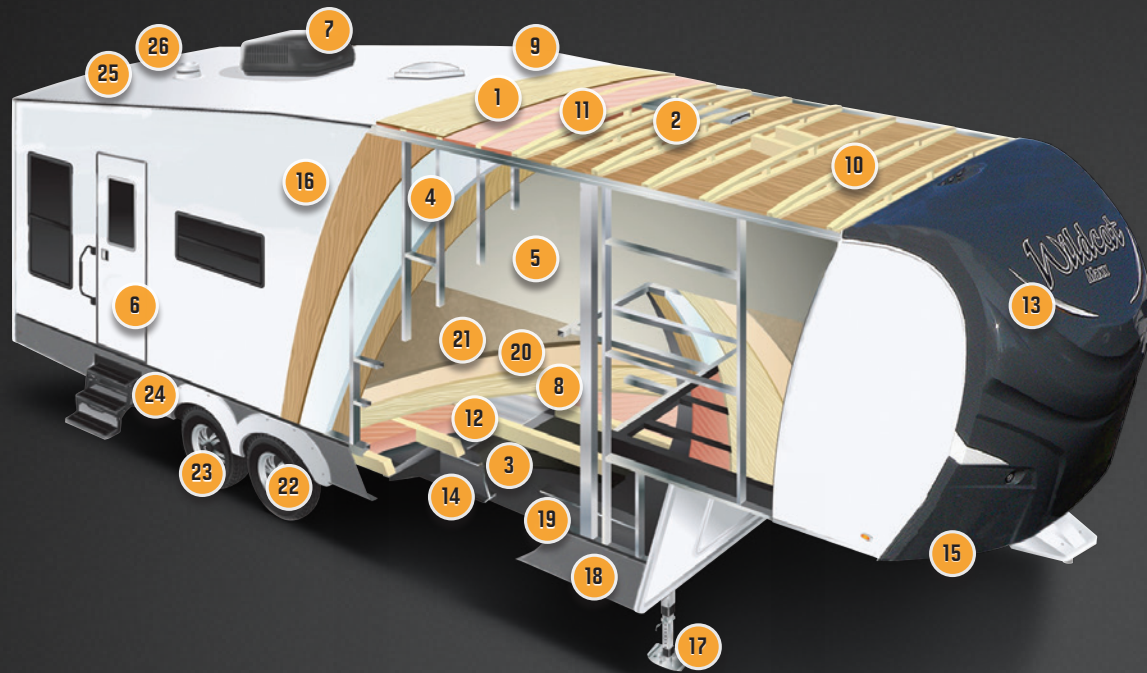
Cobblestone



Solid Surface Countertop Option



Mocha



CONSTRUCTION

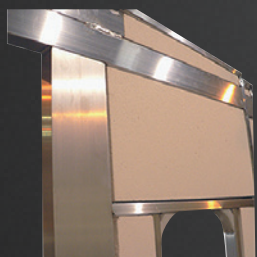
1. 3/8" Roof Decking
2. Insulated A/C Duct work
3. Heavy Duty Steel I-Beam Chassis
4. High Density R10 Block Foam Insulation in Walls
5. Vinyl Covered Interior Decorative Wall Board
6. Full Size Radius Entry Door
7. 13.5k BTU Air Conditioner
8. 5/8" Seamless Floor Decking
9. One-Piece ALPHA SUPER FLEX 3 Roof Membrane (12 year warranty)
10. 5" Engineered and Fabricated Roof Rafters 16" on Center
11. 2 Layers of (R-7) Fiberglass Roof & End Wall Insulation Plus Reflective (R-38) with Astrofoil
12. (R-7) Fiberglass Floor Insulation Plus Reflective (R-38) with Astrofoil
13. Aerodynamic Gel-coated Fiberglass Front Cap
14. ALL SEASON 12v Heating Pads On All Tanks
15. Optimized Turning Radius For Todays Short Bed Trucks
16. 2" Thick ALUMACAT Vacuum-Bonded Fiberglass Laminated Sidewalls
17. Spring-Loaded Quick Release Jack Pins on Landing Gear Legs
18. Radius-Wrap Aluminum Skirt Metal
19. Fully Enclosed Underbelly with (R-7) Fiberglass Insulation and (R-38) Astrofoil under Holding Tank
20. Premium Carpet Padding
21. Synthetic Residential Carpeting with Stain Guard
22. Load Range 'D' 15" Radial Tires (Standard) or Optional Load Range 'E' 16" Tires
23. E-Z Lube Axles
24. Modeled Fender Skirt
25. Pre-Wired for Back-up Camera
26. Vented Attic



CLIMATECH® COLD WEATHER ALL SEASONS INSULATION PACKAGE

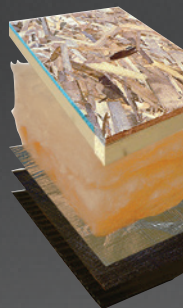
- Underbelly has R-38 reflective atto-foil insulation + R-7 fiberglass under each holding tank. Also included is a 12-volt tank heater for each of the holding tanks
- The floor has R-38 reflective astro-foil insulation + R-7 fiberglass insulation
- The ceiling, front wall and rear wall have R-38 reflective astro-foil insulation + two layers of R-7 fiberglass insulation
- The side walls, three sides of the slide-out, the raised upper deck of all fifth wheels and all raised bunk beds are vacuum-bonded, aluminum construction with R-10 high-density block foam insulation
- The slide-out floor also has a layer of R-38 reflective astro-foil insulation on top of 1.5" plywood decking
- On all fifth wheels, the outside storage compartments have an actual heat duct blowing hot air from the furnace directly into the storage compartment
- Every Wildcat Maxx comes with a vented attic to allow moisture to escape in the winter and heat to escape in the summer
- Every Wildcat Maxx comes standard with a 35,000 BTU furnace

(It is important to remember that astro-foil insulation has an actual "R" value of 0. It is a calculated, reflective "R" value of 38 at an ambient temperature of 80 degrees Fahrenheit.)



HEAVY-DUTY ALUMINUM FRAMING

We use heavier tubing than most of our competition. Our vacuum-bonded, 2" side walls are fully insulated with R-10 Block Foam insulation and each opening is 100% framed on all 4 sides with welded aluminum



DOUBLE INSULATED CEILING WITH REFLECTIVE FOIL, STANDARD

Our products are designed with the latest insulation products and are engineered to withstand extreme environments. Insulation and reflective foil is added above the protective water barriers on the bottom of each unit. We also add vented areas in the ductwork to heat the underbelly of each unit.



R-38 RATING IN CEILING AND FLOORS

Spaced Age Astro-Foil Insulation™
Our system has a calculated reflective R-Value of 38 at an ambient temperature of 80° Fahrenheit and can double your heating and cooling efficiencies.



PRE-DELIVERY INSPECTION FACILITY

20,000 square feet of quality assurance. The bare essentials for a premium product. This state-of-the-art facility gives immediate daily feedback to production for quality assurance in every unit built.



Forest River, Inc. encourages our customers to purchase their Forest River products from a local dealership whenever possible for the following reasons:

- 1) Forest River, Inc. dealers are independently owned and operated businesses so priority service and scheduling is at their discretion and is often provided to customers that purchased their unit at that dealership.
- 2) Purchasing locally allows customers to establish meaningful relationships with a dealer, enhancing the RV experience through assistance with product questions, user tips or RV regulations for your state or country, and much more!
- 3) Canadian customers must meet requirements to bring an RV purchased out of the country to their home. These requirements may involve additional inspections and certifications, taxes and fees. Your local Canadian Dealer is a professional at meeting these requirements.
- 4) Scheduling timely warranty repairs and adjustments through a local dealership provides far greater flexibility and convenience to you, the customer!

It is the goal of Forest River, Inc. that all of our RV owners fully enjoy the RV experience and that customer satisfaction meets or exceeds their expectations!

24/7 EMERGENCY ROADSIDE ASSISTANCE

For a worry-free ownership experience

Forest River includes one

year of Coach-Net RV Technical & Roadside Assistance with each RV purchase. Whether new to the RV lifestyle or an experienced RV enthusiast, Forest River owners have 24/7 access to technical, operational and emergency road service coverage throughout the US & Canada.

Coach-Net's fast, dependable service is just a phone call away.

Coach-Net[®]
RV Technical & Roadside Assistance



Specification Definitions

GVWR (Gross Vehicle Weight Rating) - is the maximum permissible weight of the unit when fully loaded. It includes all weights, inclusive of all fluids, cargo, optional equipment and accessories. For safety and product performance do NOT exceed the GVWR.

GAWR (Gross Axle Weight Rating) - is the maximum permissible weight, including cargo, fluids, optional equipment and accessories that can be safely supported by a combination of all axles.

UVW (Unloaded Vehicle Weight) - is the typical weight of the unit as manufactured at the factory. It includes all weight at the unit's axle(s) and tongue or pin and LP Gas. The UVW does not include cargo, fresh potable water, additional optional equipment or dealer installed accessories.

*Estimated average based on standard build optional equipment.

CCC (Cargo Carrying Capacity) - is the amount of weight available for fresh potable water, cargo, additional optional equipment and accessories. CCC is equal to GVWR minus UVW. Available CCC should accommodate fresh potable water (8.3 perlon). Before filling the fresh water tank, empty the black and gray tanks to provide for more cargo capacity.

** Estimated average based on standard build optional equipment

Each Forest River RV is weighed at the manufacturing facility prior to shipping. A label identifying the unloaded vehicle weight of the actual unit and the cargo carrying capacity is applied to every Forest River RV prior to leaving our facilities.

The load capacity of your unit is designated by weight, not by volume, so you cannot necessarily use all available space when loading your unit.



Wildcat Maxx



Learn More

Scan this barcode using a QR Reader on your smart phone to learn more about Forest River.



A Berkshire Hathaway Company

1429 SE UGLOW AVE, DALLAS, OREGON 97338
WWW.FORESTRIVERINC.COM/WILDCATMAXX
(503) 831-1200

YOUR WILDCAT MAXX DEALER

All information contained in this brochure is believed to be accurate at the time of publication. However, during the model year, it may be necessary to make revisions and Forest River, Inc., reserves the right to make all such changes without notice, including prices, colors, materials, equipment and specifications as well as the addition of new models and the discontinuance of models shown in this brochure. Therefore, please consult with your Forest River dealer and confirm the existence of any materials, design or specifications that are material to your purchase decision. Litho. U.S.A. P / W: 2016.05.26