

LEPRECHAUN

LEPRECHAUN



Shown with partial paint option.

LEPRECHAUN VALUE LEADER FLOORPLANS AND SPECIFICATIONS



260RS SHOWN WITH CREAM DÉCOR



260RS SHOWN WITH CREAM DÉCOR



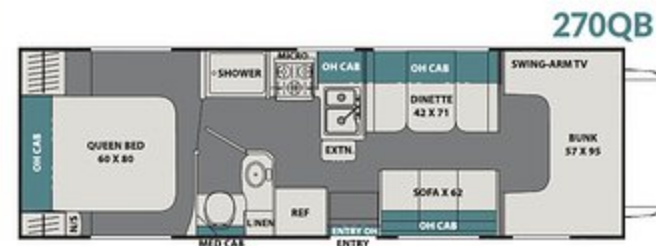
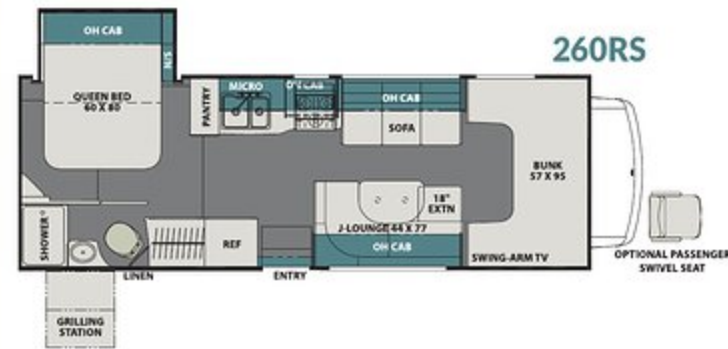
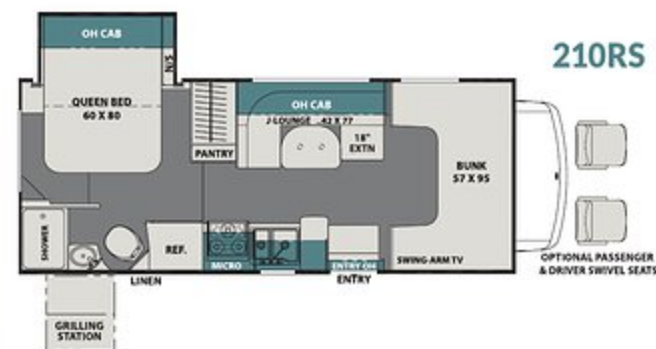
210RS SHOWN WITH MOCHA DÉCOR

LEPRECHAUN VALUE LEADER SPECIFICATIONS

MODEL	210QB	210RS	260RS	270QB
Chassis	4500-CHEVY/ E350 FORD	4500-CHEVY/ E350 FORD	4500-CHEVY/ E350 FORD	4500-CHEVY/ E350 FORD
Engine	V8-6.0L/V10-6.8L	V8-6.0L/V10-6.8L	V8-6.0L/V10-6.8L	V8-6.0L/V10-6.8L
Horse Power	324/305	324/305	324/305	324/305
Torque	373/420	373/420	373/420	373/420
Wheel Base	159"/158"	159"/158"	191"/190"	191"/190"
GVWR (lbs.)	14,200/12,500	14,200/12,500	14,200/12,500	14,200/12,500
GCWR (lbs.)	20,000/18,500	20,000/18,500	20,000/18,500	20,000/18,500
UVW (approx. lbs.)	9,583/TBD	10,376/10,175	10,792/10,750	10,450/10,340
CCC (approx. lbs.)	4,617/TBD	3,824/2,257	3,471/1,750	3,750/2,160
GAWR Front (lbs.)	4,600/5,000	4,600/5,000	4,600/5,000	4,600/5,000
GAWR Rear (lbs.)	9,600/8,500	9,600/8,500	9,600/8,500	9,600/8,500
Interior Height	6' 11"	6' 11"	6' 11"	6' 11"
Exterior Width	8' 4"	8' 4"	8' 4"	8' 4"
Exterior Height (with A/C)	10' 10"	10' 11"	10' 11"	10' 11"
Exterior Length (with Hitch)	24' 6"/24' 0"	24' 9"/24' 3"	27' 11"/27' 5"	30' 0"/29' 6"
Hitch Weight (lbs.)	5,000	5,000	5,000	5,000
Fuel Capacity (gal.)	57/55	57/55	57/55	57/55
LP Capacity (lbs.)	68	68	68	40
Fresh Water Capacity (gal.)	50	50	50	40
Water Heater Capacity (gal.)	6	6	6	6
Grey Tank Capacity (gal.)	28	28	31	31
Black Tank Capacity (gal.)	22	31	31	31
Exterior Storage (cu. ft.)	92	67	60	77
Awning Length	15'	15'	18'	20'

TOP FEATURES

- **Azdel "SuperLite" substrate with 100% Aluminum Framing and 2" Sidewall Construction**
Dry rot resistant, industry leading insulation value, and formaldehyde free
- **EVEN COOL™ A/C Ducting System**
Insulated duct work system with mold inhibitor, more efficient and consistent cooling with superior air quality (Non-ducted air systems on 210QB)
- **Water Works Utility Station**
Centrally located hook ups, easy winterization valve, and black tank flush
- **CrossFlex Reinforced PVC Roof Material**
12 year limited warranty, ASTM D751 tested for superior durability, and light weight
- **Wi-Fi Ranger Sky4**
Boosts weak Wi-Fi signal, Secure network with SafeSurf VPN, Single login for all devices, Auto-reconnect, and LTE data ready



GVWR (Gross Vehicle Weight Rating) is the maximum permissible weight of the unit when fully loaded. It includes all weights, inclusive of all fluids, occupants, cargo, optional equipment and accessories. For safety and product performance do NOT exceed the GVWR.

GCWR (Gross Combined Weight Rating) is the maximum permissible loaded weight of your motor home and any towed trailer or towed vehicle. Actual GCWR of this vehicle may be limited by the sum of the GVWR and the installed hitch receiver maximum capacity rating; see hitch rating label for detail.

GAWR (Gross Axle Weight Rating) is the maximum permissible weight, including cargo, fluids, optional equipment and accessories that can be safely supported by each axle.

UVW (Unloaded Vehicle Weight)** is the typical weight of the unit as manufactured at the factory. It includes all weight at the unit's axle(s), including full fuel, all fluids and LP Gas. The UVW does not include cargo, fresh potable water, additional optional equipment or dealer installed accessories.

* Estimated Average based on standard build optional equipment.

CCC (Cargo Carrying Capacity)** is the amount of weight available for fresh potable water, cargo, passengers, additional optional equipment and accessories. CCC is equal to GVWR minus UVW. Available CCC should accommodate fresh potable water (8.3 lbs per gallon). Before filling the fresh water tank, empty the black and gray tanks to provide for more cargo capacity.

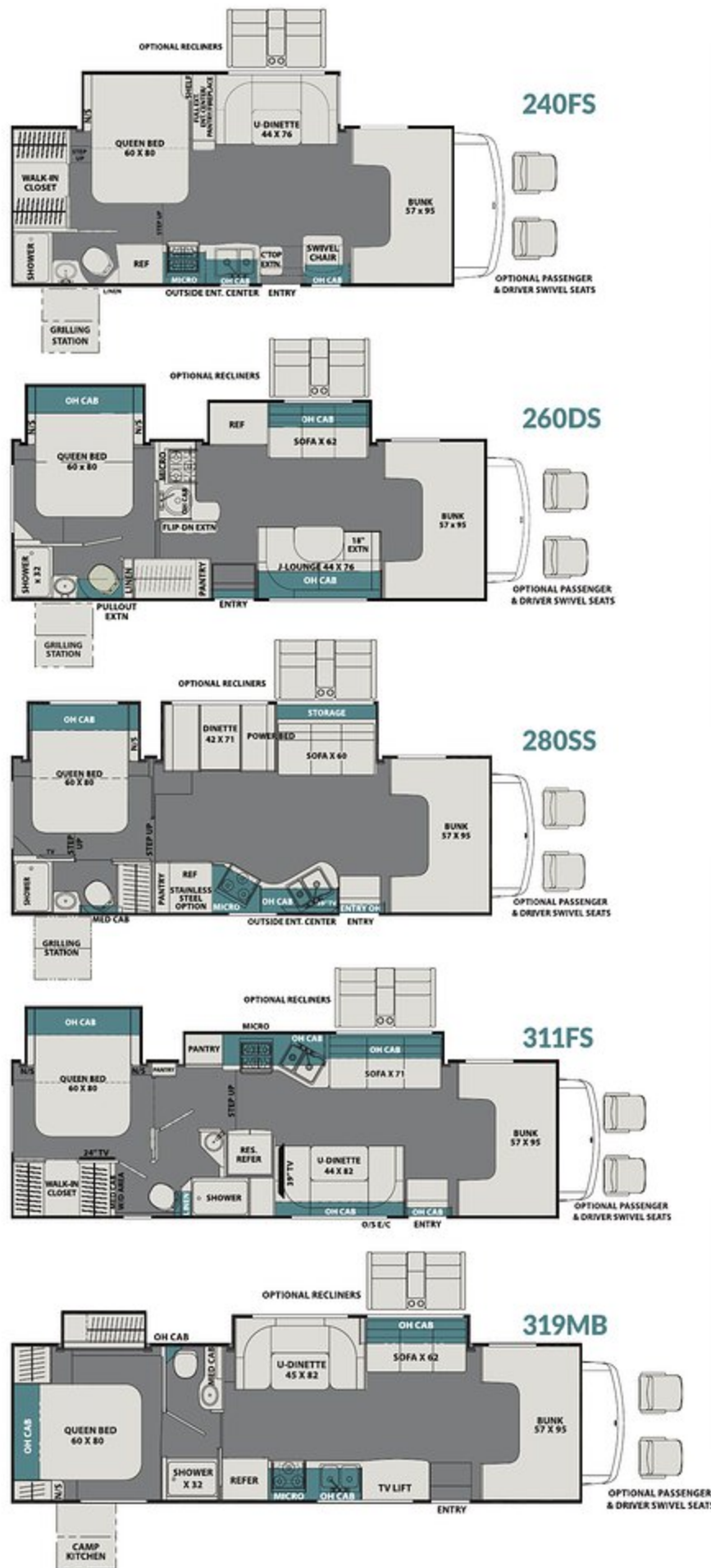
** Estimated average based on standard build optional equipment

Each Coachmen motorhome is weighed at the manufacturing facility prior to shipping. A label identifying the unloaded vehicle weight of the actual unit and the cargo carrying capacity is applied to every Coachmen motorhome prior to leaving our facilities.

The load capacity of your unit is designated by weight, not by volume, so you cannot necessarily use all available space when loading your unit.

Actual towing capacity is dependent upon your particular loading and towing circumstances, which includes the GVWR, GAWR and GCWR as well as adequate trailer brakes. Please refer to the Operator's Manual of your vehicle for further towing information.

LEPRECHAUN PREMIER FLOORPLANS AND SPECIFICATIONS



LEPRECHAUN FULL BODY PAINT OPTIONS



LEPRECHAUN PREMIER SPECIFICATIONS

MODEL	240FS	260DS	280SS	311FS	319MB
Chassis	4500-CHEVY/ E450 FORD	4500-CHEVY/ E450 FORD	450 FORD	450 FORD	450 FORD
Engine	V8-6.0L/V10-6.8L	V8-6.0L/V10-6.8L	V10-6.8L	V10-6.8L	V10-6.8L
Horse Power	324/305	324/305	305	305	305
Torque	373/420	373/420	420	420	420
Wheel Base	183"/182"	191"/190"	198"	220"	223"
GVWR (lbs.)	14,200/14,500	14,200/14,500	14,500	14,500	14,500
GCWR (lbs.)	20,000/22,000	20,000/22,000	22,000	22,000	22,000
UVW (approx. lbs.)	11,234/11,322	11,820/11,874	11,875	12,867	12,671
CCC (approx. lbs.)	2,966/3,178	2,380/2,262	2,625	1,633	1,829
GAWR Front (lbs.)	4,600/5,000	4,600/5,000	5,000	5,000	5,000
GAWR Rear (lbs.)	9,600/9,600	9,600/9,600	9,600	9,600	9,600
Interior Height	6' 11"	6' 11"	6' 11"	6' 11"	6' 11"
Exterior Width	8' 4"	8' 4"	8' 4"	8' 4"	8' 4"
Exterior Height (with A/C)	10' 11"	10' 11"	10' 11"	10' 11"	10' 11"
Exterior Length (with Hitch)	26' 9"/26' 3"	27' 11"/27' 5"	28' 5"	31' 10"	32' 11"
Hitch Weight (lbs.)	5,000/7,500	5,000/7,500	7,500	7,500	7,500
Fuel Capacity (gal.)	57/55	57/55	55	55	55
LP Capacity (lbs.)	68	68	68	68	68
Fresh Water Capacity (gal.)	50	50	43	50	50
Water Heater Capacity (gal.)	6	6	6	6	6
Grey Tank Capacity (gal.)	28	31	31	32	32
Black Tank Capacity (gal.)	31	31	31	31	29
Exterior Storage (cu. ft.)	55	60	83	70	100
Awning Length	17'	18'	19'	19'	21'

EXPERIENCE LEPRECHAUN



319MB SHOWN WITH MOCHA DÉCOR



311FS SHOWN WITH CREAM DÉCOR

visit
**CoachmenRV.com/
Leprechaun**

for more photos, virtual
tours, training videos and the
latest model standards
and options.

YOUR **LEPRECHAUN** DEALER



Coachmen Owner "Digital Kit" App

Now you can have your Owner's Manual with you wherever you are. Download our FREE App from the App Store or Google Play and you'll have the information right at your fingertips.



www.ForestRiverBuyLocal.com



Learn More
Scan this barcode using
a QR Reader on your
smart phone to learn
more about Forest River.



A Berkshire Hathaway company.

All information contained in this brochure is believed to be accurate at the time of publication. However, during the model year, it may be necessary to make revisions and Coachmen reserves the right to make all such changes without notice, including prices, colors, materials, equipment and specifications as well as the addition of new models and the discontinuance of models shown in this brochure. Therefore, please consult with your Coachmen dealer and confirm the existence of any materials, design or specifications that are material to your purchase decision. 5/19

©Copyright 2019 Coachmen RV a Division of Forest River Inc - All Rights Reserved.



24/7 EMERGENCY ROADSIDE ASSISTANCE WITH VEHICLE PURCHASE*

TOWING
JUMP-STARTS
TIRE CHANGES
FLUID DELIVERY
LOCKOUT
SERVICE

WINCH-OUT
MOBILE MECHANIC
TECHNICAL
SUPPORT
DEALER LOCATOR
SERVICES



*VALID FOR 1 YEAR FROM DATE OF PURCHASE



COACHMEN OWNERS ASSOCIATION

FREE MEMBERSHIP
www.coachmenowners.com



423 N. Main Street • P.O. Box 30
Middlebury, IN 46540

To learn more about Coachmen RV and our products and see how Coachmen is making the easy life easier, call us toll free at (800) 353-7383, or visit www.coachmenrv.com