

CEDAR CREEK SILVERBACK & HATHAWAY EXTENDED STAY FIFTH WHEELS



SILVERBACK

*Cedar Creek*

HATHAWAY



THE SMART CHOICE FOR THE EXPERIENCED RV'ER ... WHEREVER THE ROAD LEADS





29RW | SILVERBACK  
GRAPHITE INTERIOR

# Cedar Creek



## THE SILVERBACK ADVANTAGE

*Silverback extended stay fifth wheels deliver the comforts and conveniences of home while on the road. Spacious floorplans, name brand appliances, residential furniture with lifetime warranties, and solid construction provides the safety and security experienced RV enthusiasts expect from Cedar Creek. Wherever you travel, whether full-timing or weekend, Silverback enhances peace of mind for life's great adventures.*

# SILVERBACK





29RW | SILVERBACK

# LUXURY RECREATION

*Silverback's generous master bedroom includes a king residential, 7" thick mattress with a fitted bedspread and pillows. Additional features include: a 32" television, King WiFiMax signal booster, washer/dryer prep, Congoleum® vinyl floor covering. A luxury, 9" triple foam mattress is an available option.*

*Silverback's luxurious bath includes a large 48" x 30" shower with seat and sliding glass doors, a large trough sink, porcelain toilet, a Create-a-Breeze fan and plenty of storage.*



## SILVERBACK EDITION PACKAGE

*(Mandatory Features)*

- "True" High Gloss Gelcoat Exterior
- Cedar Creek's Famous, all aluminum construction
- 50" Insignia Television with swing arm
- 12 volt, Insignia Home Theater System and App control for your smart phone
- High Sheen, European Beech Cabinet Doors
- Shaw® Carpeting on Dining Slide
- "King" satellite prep to roof and docking station
- 36" Fireplace with Thermostat
- Hehr automotive frameless windows
- InterVac Central Vacuum with Automatic Dustpan and front storage port
- Congoleum® Vinyl flooring in Living Room and Bedroom
- One-piece, Designer Backsplash
- Solid Surface Countertops
- 20" Glass door pantry with full extension drawers
- 20 cu. ft. Stainless Steel, Double Drawer, Electric Refrigerator with Icemaker
- Hide-a-Bed Sofa
- Power Theater Seating
- Ceiling Fan
- (2) Whisper Quiet, HP Air Conditioners
- 72" x 80" King Mattress
- MorRyde®, 5 Tier, "Step Above" Entry Step
- Deluxe night, blackout, roller shades
- 32" Bedroom television
- 50 Amp cord reel





THE SMART CHOICE FOR THE EXPERIENCED RV'ER ... WHEREVER THE ROAD LEADS



37FLB | SILVERBACK

### EXCELLENT STORAGE – INSIDE AND OUT

*This front living, bath and a half floor plan features a raised master bedroom, private master bath and stacked washer/dryer closet. An exterior hide-a-way garage offers three times more cargo capacity than most fifth wheels.*

# CEDAR CREEK SILVERBACK FLOORPLANS

Check out the Optional Cedar Creek Party Center shown on page 11.



29RW



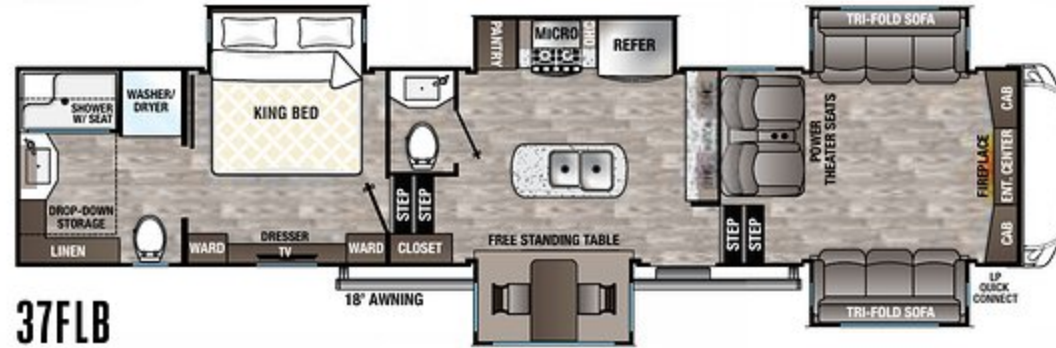
311K



331K



35LFT



37FLB



37MBH



MODEL	29RW	311K	331K	F35LFT	37FLB	37MBH
GVWR	14350 lb.	14435 lb.	14067 lb.	16050 lb.	16615 lb.	16135 lb.
Hitch Weight	2350 lb.	2435 lb.	2067 lb.	2050 lb.	2615 lb.	2135 lb.
UVW	11414 lb.	11244 lb.	10880 lb.	13324 lb.	13564 lb.	12679 lb.
CCC	2936 lb.	3191 lb.	3187 lb.	2726 lb.	3051 lb.	3456 lb.
Exterior Length	33' 3"	35' 3"	35' 5"	40' 11"	40' 11"	40' 8"
Exterior Height	13' 5"	13' 5"	13' 5"	13' 5"	13' 5"	13' 5"
Exterior Width	96"	96"	96"	96"	96"	96"
On Demand Fresh Water	69 gal.	69 gal.	69 gal.	69 gal.	69 gal.	69 gal.
Gray Water	80 gal.	80 gal.	80 gal.	80 gal.	80 gal.	80 gal.
Black Water	40 gal.	40 gal.	40 gal.	40 gal.	40 gal.	40 gal.
Awning Size	18 ft.	18 ft.	16 ft.	21 ft.	18 ft.	21 ft.

EXTERIOR	SILVERBACK	HATHAWAY
"True" Gelcoat Exterior (The Best of the Best in Exteriors)	SP	HP
True Gelcoat, Painted, Front Cap	SP (No paint)	HP
Exterior Graphics Design with 5 Year Warranty	★	★
Cedar Creek's Famous All Aluminum Superstructure on 16" Centers or less	SP	HP
Silaprene® Bonded Sidewalls - Resilient, grows stronger with age. resistance to UV, heat, cold, moisture, oils, gasoline, highway chemicals, and creates a Also has outstanding bond that cannot delaminate with time.	SP	HP
<b>6-Point Hydraulic Leveling System (Mandatory)</b>	0	0
<b>Trailair Air Ride Hitch</b>	0	0
Hehr Frameless, Tinted Automotive Style Windows	★	★
<b>Dual Pane Frameless, Tinted Windows</b>	0	0
Z-frame with Metal Wrapped Skirting to the Frame	★	★
Performance and Safety - Dexter®	★	★
Dexter® Heavy Duty Axles with E-Z Lube® Hubs	★	★
Dexter® Nev-R-Adjust® Brakes	★	★
Dexter® E-Z Flex Suspension with Greased Zerk fittings	★	★
Bronze Bushings for Shackles "No Plastic"	★	★
16" - E&G Special Trailer (ST) Tires 17.5" on "H"	★	★
1-1/4" Thick Baggage Door with Slam Latches	★	★
4' x 6' ABS, Ribbed, Removable Underbelly Panels for Easy Access into the Underbelly	★	★
Full, Walk-on Roof with TPO Vinyl Roof Covering	★	★
Wired for Furrion® Rear Camera	★	★
<b>Furrion Rear Observation or 4 Camera Security Systems</b>	0	0
12V Heating Pads on All Black, Grey, and Fresh Water Tanks	★	★
<b>Slide-out Awning Toppers</b>	0	0
Extra Wide 32" Entry Door with a Friction Hinge and MorRyde® Easy-Steps™	SP	HP
A & E Black Electric Awning with Upgraded Fabric and LED Night Lights	★	★
<b>Second 12' THULE® Power Awning on Dining Slide (N/A 35LFT, 37FLK, 38RTH)</b>	0	0
Full Docking Station with Multi-Function Tank Levers, Outside Shower, Black Tank Flush, 12V Battery Disconnect	★	★
Door Side, Cold Water Port	★	★
Heated Front Storage Compartment with Slam Door Baggage Latches with Magnetic Catches	★	★
50 Amp Cord Reel	SP	HP
(2) Whisper Quiet, Ducted Air Conditioners with Dual Zone Control and Cold Air Returns	★	★
<b>Heat Pump on Main Air Conditioner</b>	0	0
12 Gallon DSI/Electric Hot Water Heater with Bypass Kit	SP	HP
<b>Truma™ On-Demand Hot Water System</b>	0	0
2" Bike Rack Receiver	★	★
<b>Full Body Paint Package</b>	0	0
<b>Generator Prep</b>	0	0
<b>5.5 Marquis Gold Onan Generator with Prep</b>	0	0
Solar Prep	SP	HP
<b>Go Power™ Solar Panels</b>	0	0
One Year of Saferide™ RV Roadside Assistance	★	★
Free Membership to Forest River Owners Group F.R.O.G.	★	★
<b>ELECTRONICS</b>		
Cedar Creek ConnectAnywhere™ Control System turns the RV into a WIFI Hotspot. Includes a free 3 month data plan subscription	★	★
50" Television with Swing Arm	SP	HP
32" Television in the Bedroom	★	★
12V AM/FM/DVD Stereo system with Phone App with Interior and Exterior Speakers	★	★
(2) Exterior Satellite and Cable Hook-Ups to Bedroom and Living Room	★	★
Pre-Wired for Satellite to the Roof	★	★
<b>King, Roof Mounted Satellite - My Dish RV Flexible Programming including local channels</b>	0	0

★ = STANDARD  
0 = OPTION

SP = SILVERBACK EDITION PACKAGE  
HP = HATHAWAY EDITION PACKAGE

KITCHEN	SILVERBACK	HATHAWAY
European Beech Cabinet Doors and Fascia in Kitchen and Living Room	★	★
Full Extension Drawer Glides with Self Closing Drawers	★	★
20 Cu. ft. Stainless Steel Electric Refrigerator with Icemaker with Dedicated Inverter	SP	HP
<b>18 Cu. Ft. Stainless Steel, Gas/Electric Refrigerator</b>	0	0
Pantry	★	★
Residential, High Top, Swivel, Kitchen Faucet with Pull Out Sprayer	★	★
Stainless Steel, 30" Over the Range Microwave	★	★
<b>Optional 30" Convection/Microwave</b>	0	0
Insignia Free Standing 24", 4-Burner Gas Range	★	★
Full Panel Backsplashes were Applicable	★	★
Backlit Medallion over the Island	★	★
Intervac Central Vacuum System with Front Storage Compartment Port	★	★
Free Standing Table with Center Leaf and 4 Chairs - (2 Folding/2 stationary with Hidden Storage)	★	★
Solid Surface Countertops with Stainless Steel Undermounted Sinks	★	★
Fantastic Create-a-Breeze Fan with Rain Sensor and Thermostat in Kitchen	★	★
Congoleum® Flooring in Living Room, Bedroom, and Bath (Carpet Mandatory in Dining Slide)	★	★
<b>Trackless Shaw® Carpet in the Living Room or Bedroom</b>	0	0
<b>Dishwasher in the Island (Available on 34IK, 36CK2, 38FBD)</b>	0	0
<b>Booth Dinette</b>	0	0
<b>Cedar Creek Outdoor Party Center in Front Storage Compartment (N/A 35LFT, 37FLB, 38RTH)</b>	0	0
<b>STANDARD LIVING ROOM FEATURES</b>		
Larger Full View Windows - Every Window Opens for Ventilation	★	★
Black-Out Night Shades	SP	Bedroom only
Day/Night Shades	N/A	HP
Power Theater Seating	SP	HP
Luxury Hide-a-Bed Sofa	SP	HP
36" Fireplace	SP	HP
Congoleum® Flooring (Carpet Mandatory in Dining Slide)	★	★
<b>STANDARD INTERIOR - BATHROOM</b>		
Full 48" x 30" Rectangular Shower with Large Seat and Sliding Glass Doors	★	★
Skylight	★	★
Upgraded Shower Head	★	★
18" High Porcelain Toilet with Top Circular Flush System	★	★
Large 10" Blade Create-a-Breeze Fan with Wall Switch	★	★
Convenient Wall Switches for Fan and Lights	★	★
Extra Storage for Linens	★	★
LED Night Lighting under Vanity	★	★
<b>STANDARD INTERIOR - BEDROOM</b>		
Residential Style Headboard with Luxurious Bedding Décor	★	★
Individual Reading Lighting Above the Bed	★	★
USB Plug-ins on each side	★	★
Standard 72" x 80" 7" King Bed	SP	HP
<b>Upgraded Luxury 9" King Bed</b>	0	0
<b>Upgraded Luxury 9" Queen Bed</b>	0	0
Storage Area Under the Bed	★	★
Prepped for an Optional Washer and Dryer	★	★
<b>Optional Side-by-Side Washer/Dryer</b>	0	0
<b>Cadet Wall Mounted Heater with Circulation Fan</b>	0	0

CEDAR CREEK SILVERBACK & HATHAWAY STANDARD FEATURES AND OPTIONS



Free-standing four burner 24" gas range

Stainless steel dishwasher is optional on select models.

20 Cu. ft. residential stainless steel electric refrigerator with ice-maker and dedicated inverter.

# WHAT'S COOKING?

*Cedar Creek Silverback and Hathaway are loaded with contemporary residential kitchen conveniences.*

Full-size pantry with full extension pull out drawers and shelves

Double waste basket cabinet (34IK, 36CK2 only)

Optional side-by-side washer and dryer



Clean up is quick and easy with stainless steel undermount sinks and this single handle, pull-out faucet with sprayer.



Shades can be set in any position and are designed with speed and length controls for privacy or a scenic view.



Cedar Creek fifth wheels are prewired for a Furrion rear wireless camera or optional four camera security system, with voice activation, night vision and wireless digital technology for a clearer view and enhanced safety.



configured to connect to available networks and devices with password access.

The standard KING Wi-Fi MAX Wi-Fi router/range extender creates your own personal, private and secure Wi-Fi network, just like at home. It can be

A&E awning with LED night light strip.



Truma™ AquaGo Comfort – A New Generation of Instant Water Heaters – (Optional)

Instant, constant, endless – the Truma AquaGo supplies hot water reliably around the clock for showering, rinsing, and hand washing. A 12 Gallon Gas/Electric water heater is standard in all Cedar Creek units.



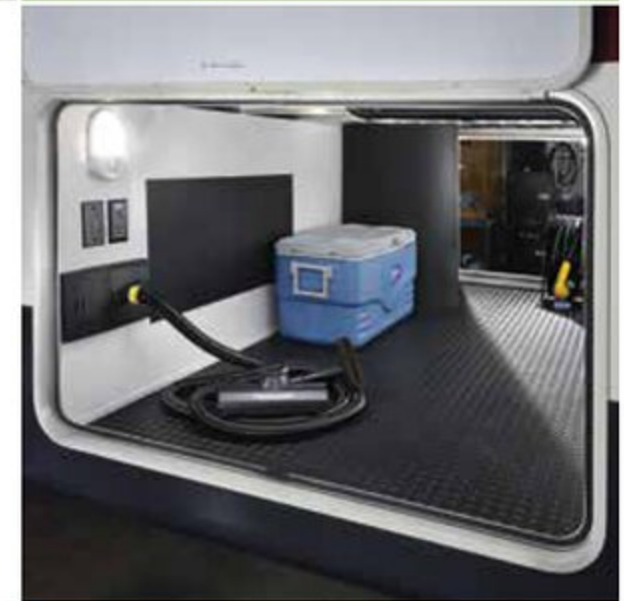
MorRyde "Step Above"® 4 tier entry step provides secure footing as you enter our extra wide 32" entry door.

## ADDED CONVENIENCES

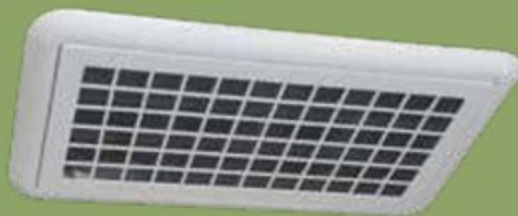
Rhino Box is the next generation upper deck chassis pin box design. It allows for additional floor space.



Docking Station includes outside shower, black tank flush, water bypass, 12V battery disconnect, selector switches, dump valves, water tank and city fills for centralized convenience.



Super quiet "HP" (High performance) air conditioning system, includes a larger compressor and cold air returns. 30% More air is being forced into the coach than a standard 15,000 BTU air conditioner.



Heated front storage compartment provides over 100 cu. ft. of storage and includes an extra vacuum port for outside clean-ups.

Rinse off to avoid tracking the outdoors, in with this convenient door side cold water port.





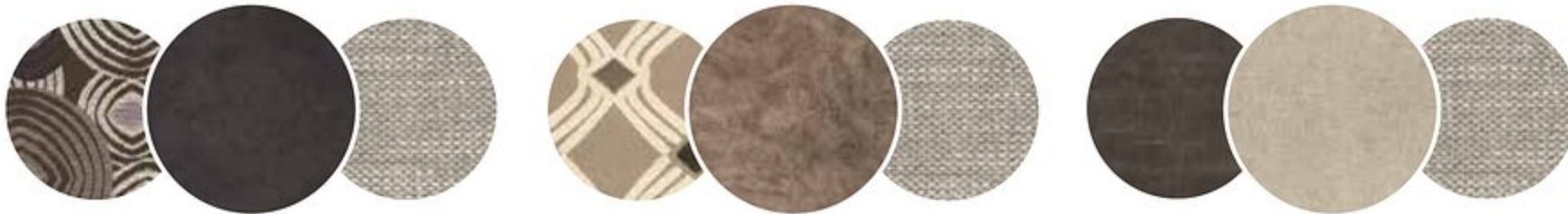
29RW Entertainment center features a drop down TV that tucks away neatly when not in use.



Cedar Creek's Connect Anywhere program includes a 3-month, unlimited data subscription that turns any fifth wheel into your own dedicated hotspot. No more relying on slow campground connections. Connect anytime - anywhere.

# ENTERTAIN IN STYLE

Entertainment center TVs are equipped with swivel mounts for great viewing from any seat.



GRAPHITE



CASHMERE



LINEN



# Cedar Creek

ConnectAnywhere



The ONEControl® System is a central hub for RV operations. Control and monitor many systems via the panel or smart phone app.



## THE CEDAR CREEK OUTDOOR PARTY CENTER

*This new party slide is only 20" wide, and tucks nicely into any fifth wheel front storage compartment. It packs a whopping punch with a 50" hidden TV on a double lift, a fold-up countertop with hidden storage, a 110V mini refrigerator and a Suburban gas griddle on a steel slide out tray. (N/A 35LFT, 37FLB, 38RTH)*



# STATE-OF-THE-ART CONSTRUCTION

CEDAR CREEK SILVERBACK & HATHAWAY EXTENDED STAY FIFTH WHEELS



High-Performance Quiet Zone™ Ducted Air System with two HP air conditioners, full 8" wide ductwork, a residential-style return air duct system and Comfort Control Center.

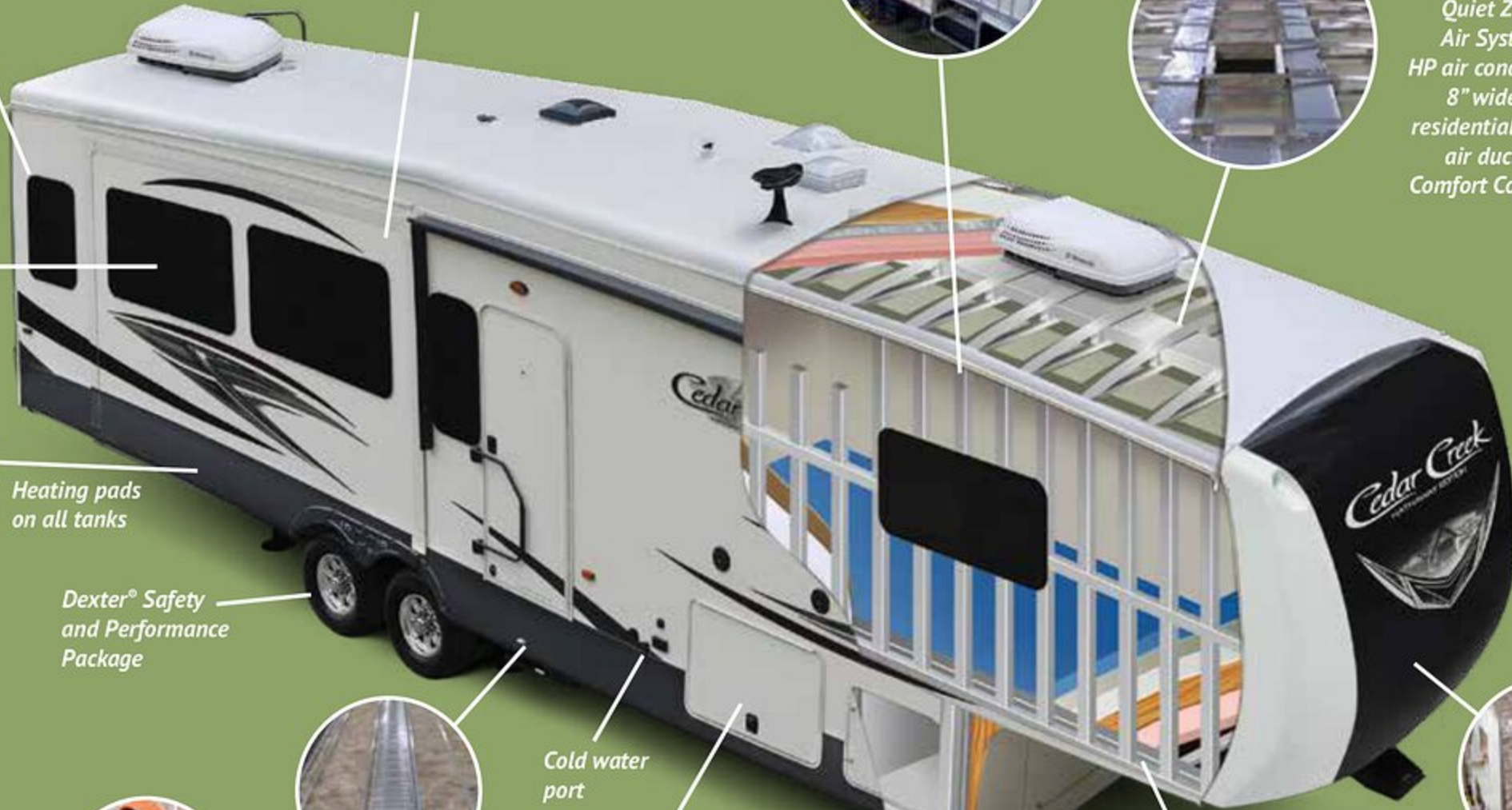
Cedar Creek's famous all Aluminum Superstructure on 16" centers or less, allows our frame to sit on top of the floor

"True" High Gloss Classic™ gelcoat exteriors

100% Aluminum framed windows and baggage doors



Hehr automotive frameless windows



Heating pads on all tanks



Dexter® Safety and Performance Package



Cold room tested to 0°F with standard insulation and heating pads that allow all season camping



Residential Glasswool Insulation, designed by nature.



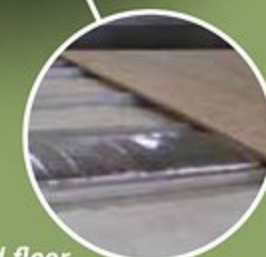
Water lines are insulated within the floor substrate, not below the floor

Cold water port

Z-Frame, heated front storage compartment with rhino floor and vacuum port

Optional Level-Up 6-point hydraulic leveling system

3" Aluminum floor studs, heat duct and 5/8" tongue and groove plywood floor.



R-38 Radiant shield Thermo-foil wrap through ceilings, underbellies and under front cap.

# CEDAR CREEK CONSTRUCTION – FOR YEARS OF CAREFREE CAMPING



## SIDE WALLS

- 2" x 2" - 16" sidewalls with individually fastened custom "L" brackets, are adhered with 3M<sup>®</sup> Silaprene for a stronger frame without welds or lamination.
- "True" High Gloss Classic Gelcoat on all exteriors withstands the test of time.
- 3M<sup>®</sup> Silaprene Bonded Sidewalls – outstanding resistance to UV, heat, cold, moisture, oils, gasoline, and highway chemicals. A resilient, bond that grows stronger with time.
- Sidewalls are bolted to the floor with 5/16" x 6-1/2" carriage bolts at each outrigger.
- Glued, R-7 glass wool insulation expands to its full capacity within the sidewall frame.
- Slide rooms are insulated on all five sides.



## FLOORS

- 3" Aluminum frame floor, in-floor heat ducting and radius "L" brackets. 3M<sup>®</sup> Silaprene adhesive bonded.
- Cambered 12" I-beam "Z" frame, with large support outriggers and full length welds.
- 5/8" Tongue and groove plywood floor, screwed every 6" to the aluminum frame; bonded with Silaprene.
- Fully enclosed ABS removable panels, for easy underbelly access. Attached with wood stringers – no holes in the frame.
- Triple layer insulation.
- 12V tank heaters on all tanks.
- Radiant shield insulation – 97% reflectivity, 3% emission.
- Water lines are located inside the floor; away from exterior walls.



## ROOF

- Full-length 3/8" wood roof decking – full walk-on roof.
- Triple layer insulation.
- Aluminum Truss Rafters on 16" centers.
- 8" Circular ducting combined with our high performance air conditioners produces a 30% increase in air conditioning performance over our competitors.
- TPO Vinyl Roof
- Roof is bolted to sidewalls with 5/16" x 3-1/2" carriage bolts
- Radiant shield insulation extends to the bottom of the front cap – R-Value 40, 97% reflectivity, 3% emission
- Attic vents



## SUPERIOR PERFORMANCE

- Nev-R-Adjust<sup>®</sup> Brakes are always properly adjusted for improved stopping power in half the distance
- E-Z Flex<sup>®</sup> rubber equalization system with 1/2" link plates and eight grease zerks per side
- Heavy duty axles with bronze bushings in shackles (No plastic bushings like our competitors)
- 16" Eight lug, ST, "G" rated, 14 ply tires on 7000 lb. Dexter<sup>®</sup> Axles
- "H" rated, 16 ply tires on 8000 lb. Dexter<sup>®</sup> Axles

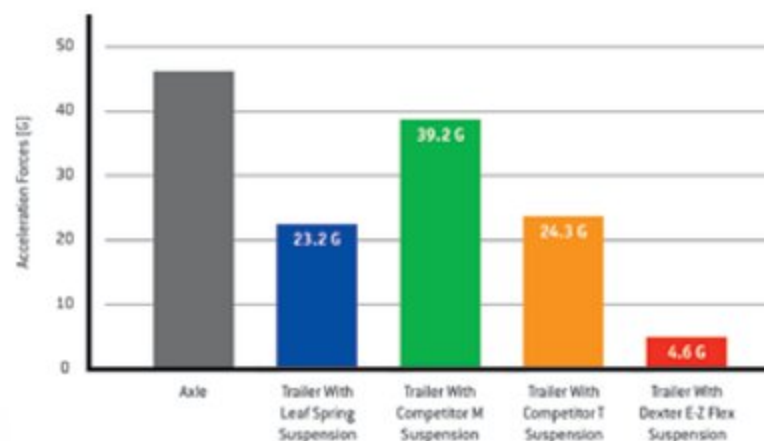


Dexter<sup>®</sup> Nev-R-Adjust<sup>®</sup>  
Brakes Standard



Dexter<sup>®</sup> E-Z Flex<sup>®</sup>  
Suspension Standard

## Dexter<sup>®</sup> Axles/Brakes Suspension For Performance and Safety



Compare acceleration forces experienced by an axle and trailer while traveling over railroad tracks at 30 MPH. The E-Z Flex<sup>®</sup> System provides up to an 80% reduction in forces on the trailer frame vs. a standard equalizer. E-Z Flex<sup>®</sup> significantly outperforms all other competitors in the same road test for a smoother, more protective ride for your trailer and cargo.



## INTERACTIVE MOBILE MANUALS

Download our Cedar Creek mobile app or visit our dynamic online manual to enhance your ownership experience. These interactive options provide incredible ease and insight into use, maintenance and enjoyment of your Cedar Creek product.



Ranging from "How-To" videos, pictures and illustrations of various components, systems and features, to fully searchable content and downloadable PDFs for individual component owner's manuals, answers are always just a click away.

View the online manual at [www.forestriverinc.com/cedarcreek/ownersmanuals](http://www.forestriverinc.com/cedarcreek/ownersmanuals), or download our FREE app from the App Store or Google Play!



View our construction video, or read the "Back to Basics" construction booklet at: [www.forestriverinc.com/cedarcreek](http://www.forestriverinc.com/cedarcreek)

**CEDAR CREEK HATHAWAY EXTENDED STAY FIFTH WHEELS**





36CK2 | HATHAWAY  
CASHMERE INTERIOR

# Cedar Creek



## THE SMART CHOICE-

*Experienced RV'ers know what they want. Cedar Creek is dedicated to helping people enjoy the outdoors by building better quality recreational vehicles. With over 20 years in the RV industry, Cedar Creek is truly considered one of the best built products in the marketplace. Many of our owners are enjoying their second and third units. See for yourself why Cedar Creek is the smart choice for the experienced RV'er.*

# HATHAWAY









36CK2 | HATHAWAY  
CASHMERE INTERIOR



36CK2 | HATHAWAY

## HATHAWAY EDITION PACKAGE

*(Mandatory Features)*

- "True" High Gloss Gelcoat Exterior
- Cedar Creek's Famous All Aluminum Construction
- "True" Gelcoat Painted Front Cap
- 12 Volt Home Theater System with Soundbar, and control App for your smart phone
- 50" Television with Swing Arm
- European Beech Cabinet doors with High Sheen Glaze
- 36" Fireplace with Thermostat
- MorRyde®, 5 Tier, "Step Above" Entry Stairs
- Extra Wide, 32" Entry Door
- LED, Edison Lighting Fixtures with Tin Medallion
- Power Theater Seating
- Solid Surface Counters
- Deluxe Hide-a-Bed Sofa
- 20 Cu. Ft., Stainless Steel, Double Drawer Refrigerator with Icemaker
- Shaw Carpeting on Dining Slide
- Congoleum® flooring in Living Area and Bedroom
- Full Pantry in the Kitchen area
- 12 Gallon Gas/Elec Water Heater
- (2) 15,000 BTU "HP" Air Conditioners
- Deluxe Day/Night Roller Shades
- 72" x 80" King Mattress
- 50 Amp Cord Reel
- Solar Prep

## LIFE STYLE





38DBRK | HATHAWAY  
LINEN INTERIOR



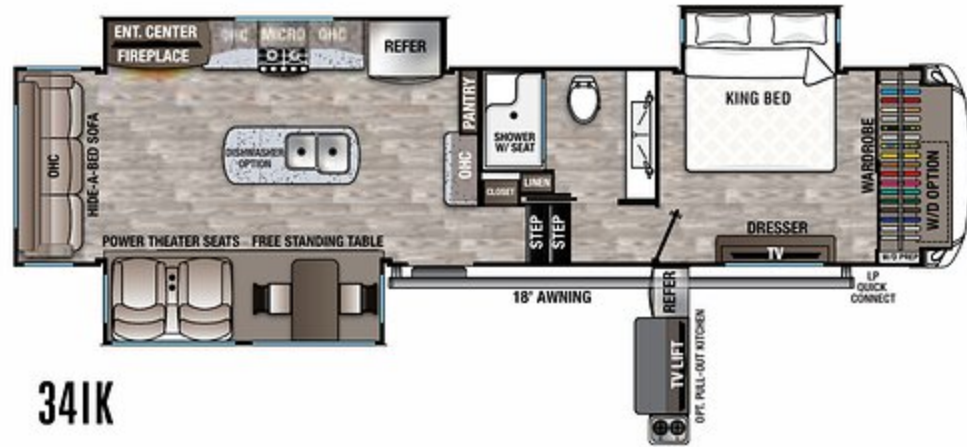
LUXURY • STYLE • VALUE



*The 38DBRK floorplan offers luxury features that make RV ownership a pleasure, home style amenities include a full. pantry. 1-1/2 baths, a main level washer/dryer closet, power theater seating, a hide-a-bed sofa and a residential office desk. (An optional second sofa is also available).*

# CEDAR CREEK HATHAWAY FLOORPLANS

Check out the Optional Cedar Creek Party Center shown on page 11.



341K



36CK2



38DBRK

38FBD



38RTH



MODEL	341K	36CK2	38DBRK	38FBD	38RTH
GVWR	16190 lb.	16525 lb.	18000 lb.	18000 lb.	18000 lb.
Hitch Weight	2190 lb.	2525 lb.	2100 lb.	2295 lb.	3176 lb.
UVW	12224 lb.	13134 lb.	12809 lb.	13824 lb.	14190 lb.
CCC	3966 lb.	3391 lb.	5132 lb.	4176 lb.	3810 lb.
Exterior Length	37' 1"	38' 10"	40' 4"	39' 9"	40' 7"
Exterior Height	13' 5"	13' 5"	13' 5"	13' 5"	13' 5"
Exterior Width	96"	96"	96"	96"	96"
On Demand Fresh Water	69 gal.	69 gal.	69 gal.	69 gal.	69 gal.
Gray Water	80 gal.	80 gal.	80 gal.	80 gal.	80 gal.
Black Water	40 gal.	40 gal.	40 gal.	80 gal.	40 gal.
Awning Size	18 ft.	18 ft.	18 ft.	18 ft.	18 ft.

**GVWR (Gross Vehicle Weight Rating)** - is the maximum permissible weight of the unit when fully loaded. It includes all weights, inclusive of all fluids, cargo, optional equipment and accessories. For safety and product performance do NOT exceed the GVWR.

**GAWR (Gross Axle Weight Rating)** - is the maximum permissible weight, including cargo, fluids, optional equipment and accessories that can be safely supported by a combination of all axles.

**UVW (Unloaded Vehicle Weight)** - is the typical weight of the unit as manufactured at the factory. It includes all weight at the unit's axle(s) and tongue or pin and LP Gas. The UVW does not include cargo, fresh potable water, additional optional equipment or dealer installed accessories.

\*Estimated Average based on standard build optional equipment.

**CCC (Cargo Carrying Capacity)\*\*** - is the amount of weight available for fresh potable water, cargo, additional optional equipment and accessories. CCC is equal to GVWR minus UVW. Available CCC should accommodate fresh potable water (8.3 lbs per gallon). Before filling the fresh water tank, empty the black and gray tanks to provide for more cargo capacity.

\*\*Estimated Average based on standard build optional equipment.

Each Forest River RV is weighed at the manufacturing facility prior to shipping. A label identifying the unloaded vehicle weight of the actual unit and the cargo carrying capacity is applied to every Forest River RV prior to leaving our facilities. The load capacity of your unit is designated by weight, not by volume, so you cannot necessarily use all available space when loading your unit.



38RTH | HATHAWAY

## PACK FOR ADVENTURE



Cedar Creek's 38RTH features a spacious rear garage that offers plenty of room for gear and toys. Stay outside where the action is with a convenient outdoor refrigerator and 32" television. When the garage is fully extended it measures 110" D x 61" W x 84" H.

# Cedar Creek

THE SMART CHOICE FOR THE EXPERIENCED RV'ER  
**FOREST RIVER INC. • CEDAR CREEK DIVISION**  
 501 Hawpatch Road • Topeka, IN 46571  
 Phone : 260-593-2404 • Fax: 260-593-2447  
 Parts & Service: 260-593-4000  
 On The Web at: [www.forestriverinc.com/cedarcreek](http://www.forestriverinc.com/cedarcreek)

All information contained in this brochure is believed to be accurate at the time of publication. However, during the model year, it may be necessary to make revisions and Forest River, Inc., reserves the right to make all such changes without notice, including prices, colors, materials, equipment and specifications as well as the addition of new models and the discontinuance of models shown in this brochure. Therefore, please consult with your Forest River dealer and confirm the existence of any materials, design or specifications that are material to your purchase decision. ©2019 Cedar Creek, a Division of Forest River, Inc., a Berkshire Hathaway company. Effective 9/1/19. All Rights Reserved. 10/19.

## CEDAR CREEK FULL BODY PAINT



KRISTAL

MIDNIGHT MIST

Full Body Paint, adorned with Cedar Creek graphics, will turn heads wherever you travel. These bold new exterior options are offered along with our Standard Graphics.



### 24/7 EMERGENCY ROADSIDE ASSISTANCE WITH VEHICLE PURCHASE\*

TOWING	WINCH-OUT
JUMP-STARTS	MOBILE MECHANIC
TIRE CHANGES	TECHNICAL
FLUID DELIVERY	SUPPORT
LOCKOUT	DEALER LOCATOR
SERVICE	SERVICES



\*VALID FOR 1 YEAR FROM DATE OF PURCHASE



### PRE-DELIVERY INSPECTION FACILITY

20,000 square feet of quality assurance. The bare essentials for a premium product. This state-of-the-art facility gives immediate daily feedback to production for quality assurance in every unit built.



Learn More  
Scan this barcode using a QR Reader on your smart phone to learn more about Forest River.



A Berkshire Hathaway company.

**FREE MEMBERSHIP**  
to Forest River Owners' Group

[www.forestriverfrog.com](http://www.forestriverfrog.com)

YOUR CEDAR CREEK DEALER



[www.ForestRiverBuyLocal.com](http://www.ForestRiverBuyLocal.com)

