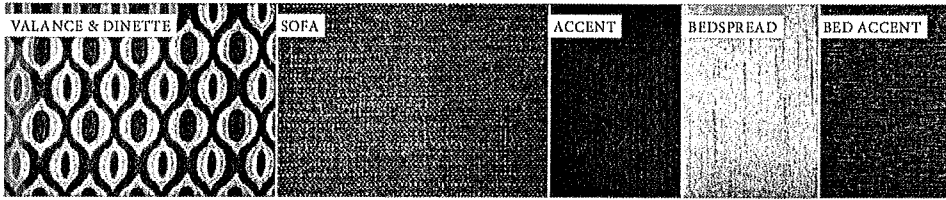
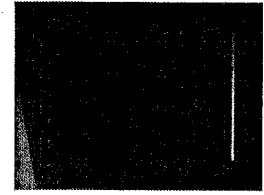


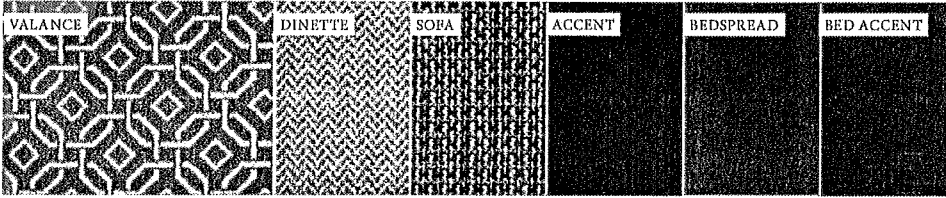
	22FE	23H	26HE	29FE	30FE
Chassis	Ford	Ford	Ford	Ford	Ford
Gross Vehicle (GVWR)	14,800	14,800	14,800	14,800	14,800
Gross Combined (GCWR)	22,000	22,000	22,000	22,000	22,000
Wheel Base	158"	158"	183"	212"	223"
Exterior Length (w/o ladder)	24'	24'-10"	27'-6"	29'-11"	32'-2"
Exterior Height (w/AC)	10'-10"	10'-10"	10'-10"	10'-10"	10'-10"
Exterior Width (w/o mirrors)	89"	89"	90"	90"	99"
Interior Height (living area)	82"	82"	82"	82"	82"
Awning Size	15'	15'	18'	14'	10'-6"
Fuel (gal)	55	55	55	55	55
LPG (lbs)	40.9	40.9	40.9	40.9	40.9
Fresh/Waste/Gray Water (gal)	40 / 24.5 / 37	40 / 24.5 / 38.0	40 / 26 / 26	39 / 26 / 32	40 / 29 / 31
Water Heater (gal)	6	6	6	6	6
Furnace (BTUs)	19,000	19,000	30,000	30,000	30,000
Exterior Storage Capacity (cu. ft.)	30.9	69.5	40	46.7	82.4



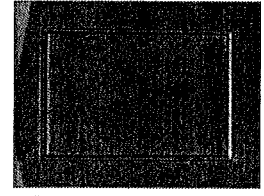
BAYSIDE



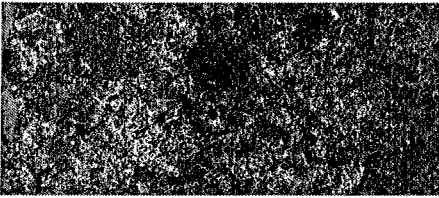
OLYMPIC CHERRY
29H, 29FE & 30FE ONLY



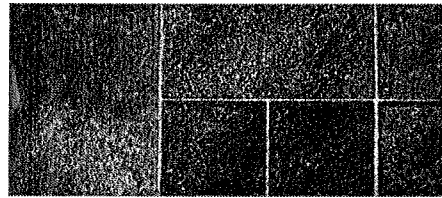
WICKER BASKET



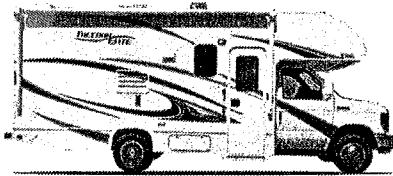
SYDNEY MAPLE
22FE & 26HE ONLY



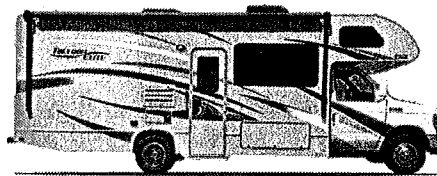
COUNTERTOPS



RESIDENTIAL VINYL FLOORING



STANDARD GRAPHICS (22FE ONLY)



SUNRISE WHD (23H, 26HE, 29FE & 30FE ONLY)

CONSTRUCTION & EXTERIOR

- Welded Tubular Steel Floor System
- Welded Tubular Aluminum Roof & Sidewall Cage Construction
- Vacu-Bond Laminated Roof, Sidewalls & Floor with Block Foam Insulation
- Premium One-Piece TPO Roof
- Slick Fiberglass Exterior with Graphics Package (22FE)
- HD-MAX® Exterior with Graphics Package (23H, 26HE, 29FE & 30FE)
- MEGA-Storage™ Compartment
- Rotocast Storage Compartments
- Flush Mount Radius Compartment Doors
- Portable Folding Table (23H)
- Power Patio Awning with Integrated LED Lighting
- Slideout Room Awning (22FE, 26HE, 29FE & 30FE)
- Roof Ladder
- Patio Light
- Exterior Acrylic Entry Grab Handle
- Framed Slider Windows

AUTOMOTIVE & COCKPIT

- Touchscreen AM/FM Dash Radio with CD/DVD Player, Bluetooth® & Back-up Monitor
- Deluxe Exterior Mirrors
- Power Windows & Door Locks
- Keyless Entry System (29FE & 30FE)
- Cruise Control
- Windshield Privacy Curtain
- Aluminum Running Boards
- Valve Stem Extenders (29FE & 30FE)
- Wheel Liners
- 8,000-lb. Trailer Hitch with 7-pin Round Connector

INTERIOR

- Rubber Tread Entry Steps with Lighted Step Well
- Metal Entry Grab Handle
- Residential Vinyl Flooring Throughout
- 82" Interior Ceiling Height
- Hard Vinyl Ceiling
- LED Lighting
- Ceiling Ducted Air Conditioning System (26HE, 29FE & 30FE)
- Cab-Over Bunk Ladder
- Flat Panel Cabinet Doors with Nickel Finish Hardware
- Ball-Bearing Metal Drawer Guides
- Window Privacy Shades
- Dream Dinette® Booth
- Fabric Barrel Chair (23H)
- Fabric Jack-Knife Sofa (26HE, 29FE & 30FE)

KITCHEN

- 6 cu. ft. Double Door Refrigerator
- 3-Burner Gas Cooktop with Oven
- Microwave Oven
- Laminate Kitchen Countertops
- Flip-up Countertop Extension (22FE, 23H & 30FE)
- Large Double Bowl Sink & Double Handle Faucet
- Waste Basket

BEDROOM & BATHROOM

- Queen Size Bed
- Bedspread & Pillow Shams
- Power Vent in Bathroom
- Porcelain Toilet
- Skylight in Shower

- Shower with Curtain (22FE)
- Shower with Retractable Door (23H, 26HE, 29FE & 30FE)

ENTERTAINMENT

- 32" LED TV on Manual Swivel in Cab-Over (22FE, 23H, 26HE & 30FE)
- 40" LED TV in Living Area (29FE)
- Dual 13" TVs & DVD Player in Bunk Bed Area (30FE)
- DVD Player
- Cable TV Ready
- Digital TV Antenna
- Bluetooth® Coach Radio System in Bedroom with Exterior Speakers (29FE)
- Exterior 32" LED TV on Manual Swivel (29FE & 30FE)
- Exterior Kitchen with 2.6 cu. ft. Refrigerator, Sink, Portable Gas Grill & 1000-watt Inverter (29FE)
- Power Charging Center for Electronics (29FE & 30FE)

ELECTRICAL & PLUMBING

- Onan® RV QG 4000 Gas Generator
- 30-amp Shoreline Power Cord
- Automatic Shoreline-to-Generator Transfer Switch
- 13,500 BTU Roof Air Conditioner in Front
- Battery Disconnect Switch
- Emergency Start Switch
- Auxiliary House Battery
- 6-gallon DSI Gas Water Heater (22FE, 23H & 26HE)
- 6-gallon DSI Gas/Electric Water Heater (29FE & 30FE)
- Water Heater Bypass System
- Holding Tanks with Heat Pads (29FE)
- Systems Control Center



IMPORTANT-PLEASE READ: This brochure reflects product design, fabrication, material, components and specifications at the date of printing, which data is disclosed below. Please visit us online at Freedom-Elite.com or consult with your selling dealership for the latest in standards, options, specification and technical information. Photographs in the brochure may depict optional equipment or may only be available in certain floor plans. Components, appliances and the chassis may have been manufactured in a calendar year before the vehicle's designated model year. All capacities are approximate. The actual length of the vehicle may differ from that indicated in the brochure due to variances in the manufacturing processes and/or installed components. All dry weights are based on standard model features and do not include optional features or equipment. Component part and appliance manufacturers issue limited warranties covering portions of the vehicle not covered under the limited warranty we issue. Copyright Thor Motor Coach, Inc. © MY 06/13/16

