

PUMA

by Palomino



Travel Trailers • Toy Haulers • Fifth Wheels • Park Trailers



Travel Trailers • Toy Haulers • Fifth Wheels • Park Trailers

PUMA
by Palomino

PUMA by Palomino Travel Trailers • Toy Haulers • Fifth Wheels • Park Trailers

PUMA

by Palomino



Travel Trailers • Toy Haulers • Fifth Wheels • Park Trailers



PUMA

by Palomino

Travel Trailers



32DBKS This spacious slide out kitchen has a residential style island sink, a large U-shaped booth dinette, a 22" 3-burner stove with an oven, plenty of kitchen storage with deep full extension drawers, and a double pantry. Large windows provide natural light and fresh air. Shown in Bark decor with contemporary Beauflor diagonal plank design flooring.

PUMA

by Palomino

Travel Trailers



32DBKS This spacious slide out kitchen has a residential style island sink, a large U-shaped booth dinette, a 22" 3-burner stove with an oven, plenty of kitchen storage with deep full extension drawers, and a double pantry. Large windows provide natural light and fresh air. Shown in Bark decor with contemporary Beauflor diagonal plank design flooring.

Whatever your travel lifestyle, there's an easy to tow Puma Travel Trailer that fits your family and friends. Puma Travel Trailer floorplan configurations have been designed with convenient features that help make the most of leisure living - including a variety of kids' bunk room models. Satellite and cable TV hook-up is standard on all models for easy access to entertainment.

30FBSS *Enjoy the view from this U-dinette with dual access storage. Recessed LED lighting above the sofa creates a great place to read. Shown in Pewter decor with decorator valances.*



30FBSS *Cooking with a view! Puma features include a convenient bar ledge, a large over the sink window, a built-in spice rack and a 60/40 double bowl sink with a gooseneck faucet.*



30FBSS *Rest in comfort with LED reading lamps and large windows for fresh air. Stow away extras in ample underbed and overhead storage. Designer pillow shams and bedspreads create a plush, relaxing retreat.*



30FBSS *is the ultimate getaway bunkroom! Kid's love the built-in bunk ladder. This well designed sleep suite boasts loads of wardrobe storage for toys and games.*



Whatever your travel lifestyle, there's an easy to tow Puma Travel Trailer that fits your family and friends. Puma Travel Trailer floorplan configurations have been designed with convenient features that help make the most of leisure living - including a variety of kids' bunk room models. Satellite and cable TV hook-up is standard on all models for easy access to entertainment.

30FBSS Enjoy the view from this U-dinette with dual access storage. Recessed LED lighting above the sofa creates a great place to read. Shown in Pewter decor with decorator valances.



30FBSS Cooking with a view! Puma features include a convenient bar ledge, a large over the sink window, a built-in spice rack and a 60/40 double bowl sink with a gooseneck faucet.



30FBSS Rest in comfort with LED reading lamps and large windows for fresh air. Stow away extras in ample underbed and overhead storage. Designer pillow shams and bedspreads create a plush, relaxing retreat.



30FBSS is the ultimate getaway bunkroom! Kid's love the built-in bunk ladder. This well designed sleep suite boasts loads of wardrobe storage for toys and games.



PUMA
by Palomino

Travel Trailers

30RKSS is a spacious rear kitchen model with hardwood framed refrigerator panels and cabinet doors in Cherry and a contemporary backsplash. This Anniversary Edition model is shown in Mocha decor with solid surface countertops, Beauflor® tile pattern flooring and swivel rockers.



PUMA
by Palomino

Travel Trailers

30RKSS is a spacious rear kitchen model with hardwood framed refrigerator panels and cabinet doors in Cherry and a contemporary backsplash. This Anniversary Edition model is shown in Mocha decor with solid surface countertops, Beauflor® tile pattern flooring and swivel rockers.





30RKSS This bath includes a Neo angle glass shower, a large wooden medicine cabinet, wall mounted toothbrush holder and soap dish and a spacious linen closet with drawers below.

Puma models are a great value with large vented windows for plenty of natural light and fresh air, ample storage and a broad selection of floorplans. These towables are a relaxing and well appointed retreat after a busy day in the great outdoors.

The Ultimate in Sleek Styling...Puma's 10 Year Special Anniversary Edition shown at right with a painted front cap.



30RKSS Entertain in style! This Anniversary Edition model includes a wooden dinette table, decorative wall border and wall sconce, end-to-end overhead cabinets, and recessed LED lighting above the optional airbed sofa with a pull-out drawer.





30RKSS This bath includes a Neo angle glass shower, a large wooden medicine cabinet, wall mounted toothbrush holder and soap dish and a spacious linen closet with drawers below.

Puma models are a great value with large vented windows for plenty of natural light and fresh air, ample storage and a broad selection of floorplans. These towables are a relaxing and well appointed retreat after a busy day in the great outdoors.

The Ultimate in Sleek Styling...Puma's 10 Year Special Anniversary Edition shown at right with a painted front cap.



30RKSS Entertain in style! This Anniversary Edition model includes a wooden dinette table, decorative wall border and wall sconce, end-to-end overhead cabinets, and recessed LED lighting above the optional airbed sofa with a pull-out drawer.



PUMA

by Palomino

Travel Trailers



19 RL



22 RB



23 FB



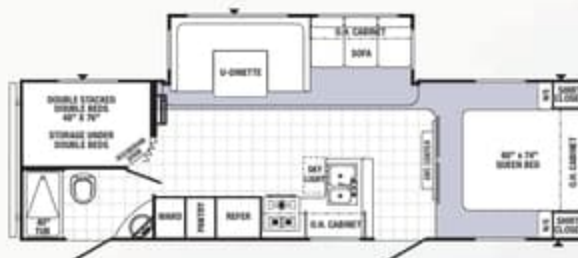
25 RBSS



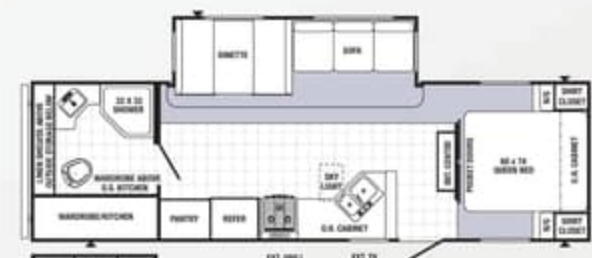
25 RS



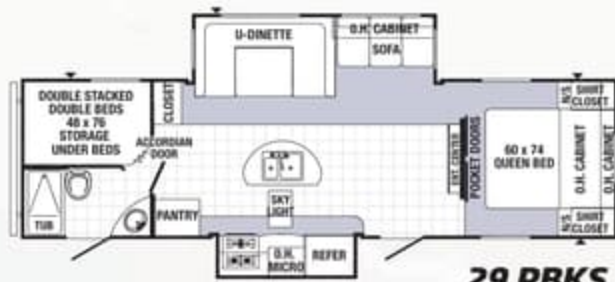
26 RLSS



28 DSBS



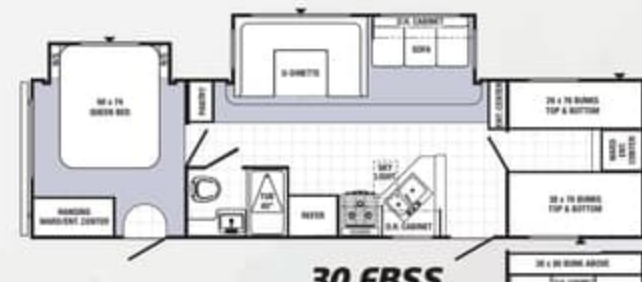
28 RBSS



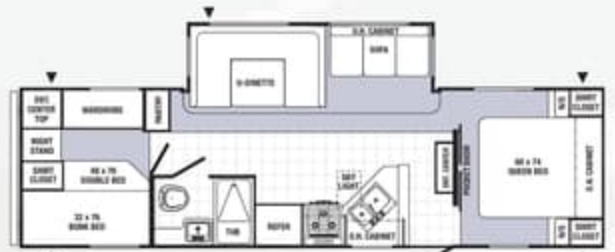
29 RBKS



30 DBSS



30 FBSS



30 FQSS



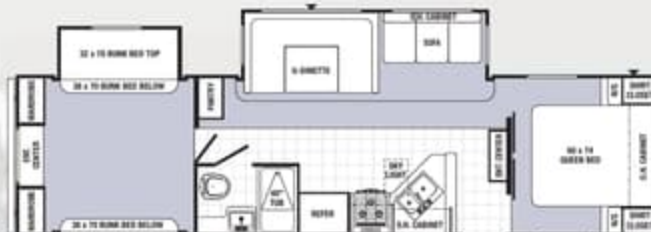
30 RLSS



30 RKSS



31 BHSS



31 DBTS



31 FKBS*

PUMA

by Palomino

Travel Trailers



19 RL



22 RB



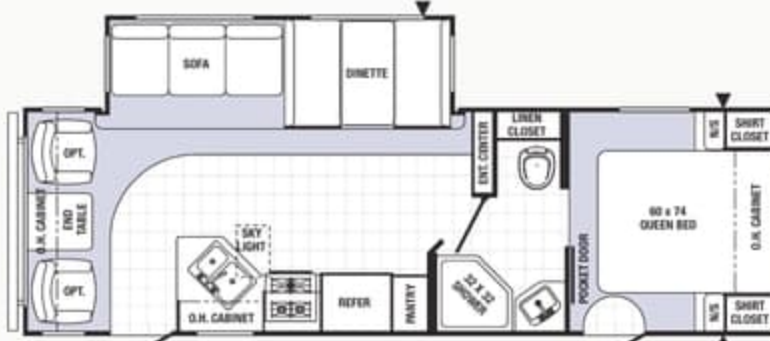
23 FB



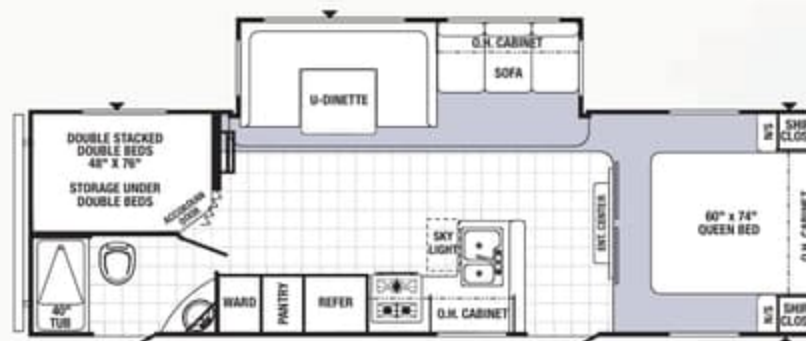
25 RBSS



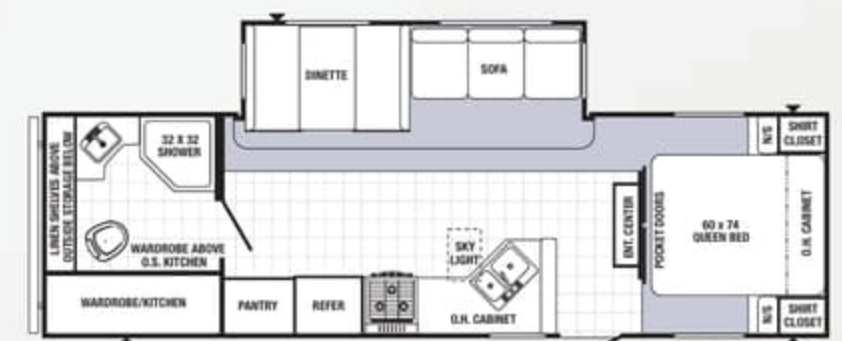
25 RS



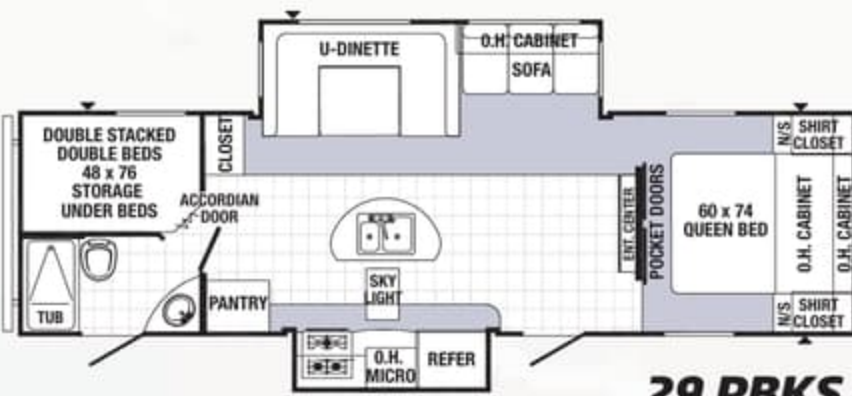
26 RLSS



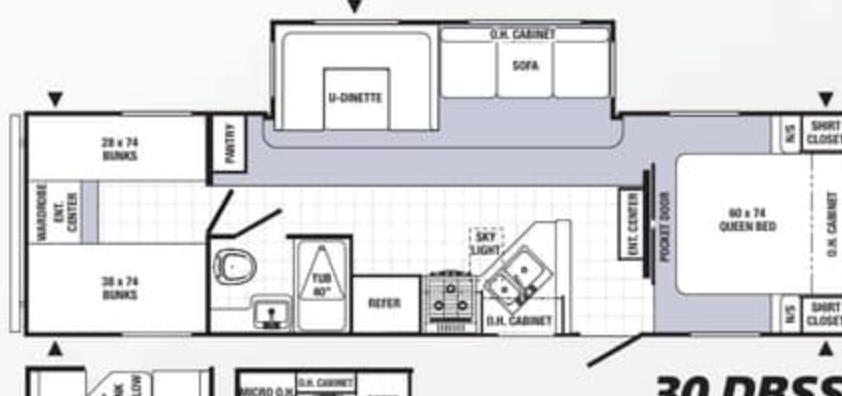
28 DSBS



28 RBSS



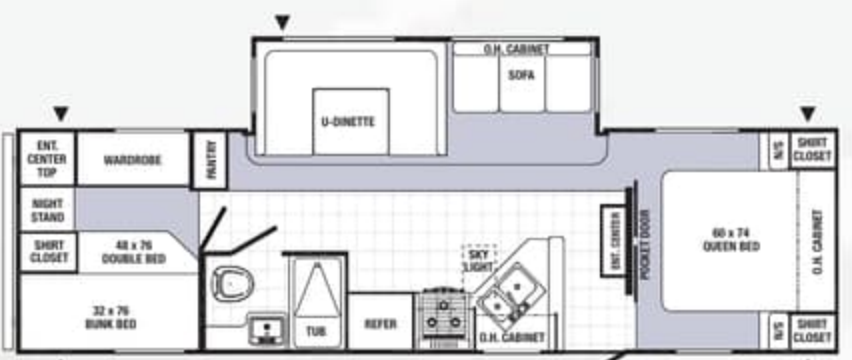
29 RBKS



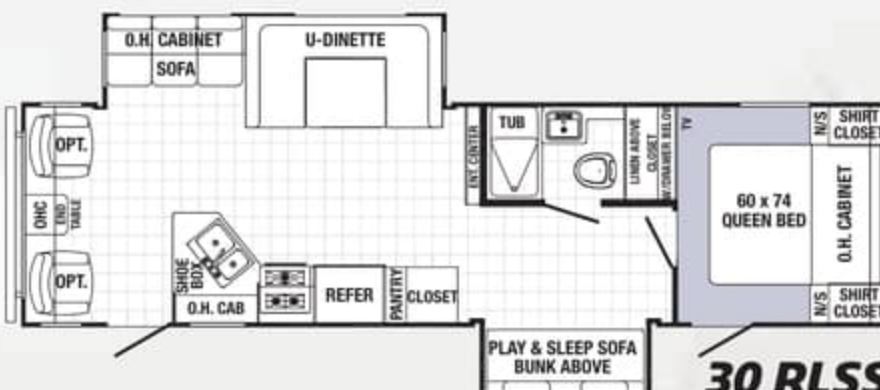
30 DBSS



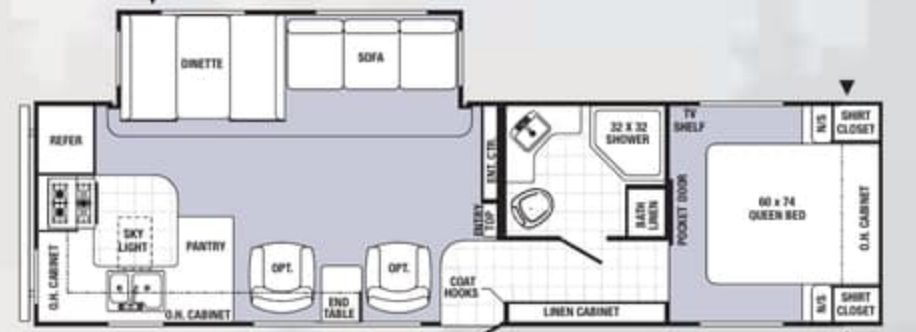
30 FBSS



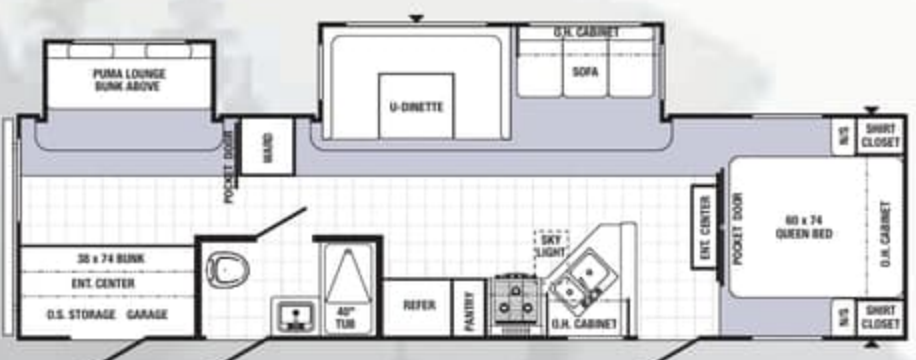
30 FQSS



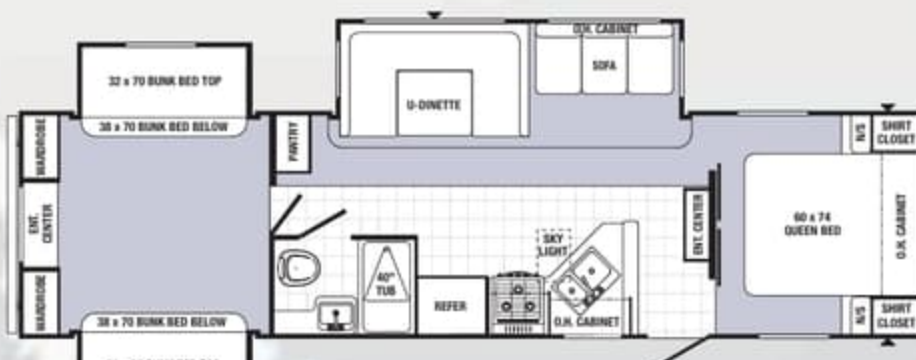
30 RLSS



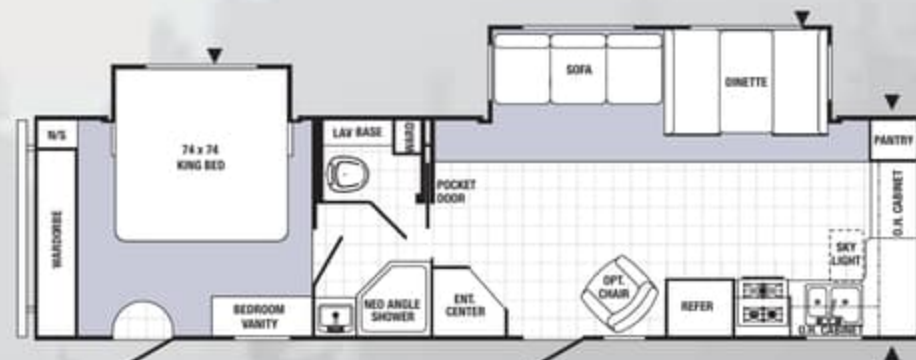
30 RKSS



31 BHSS



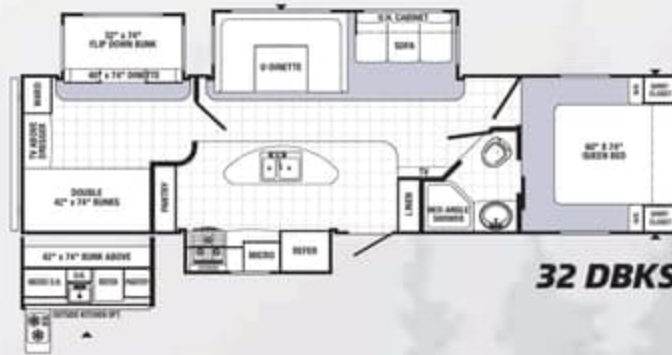
31 DBTS



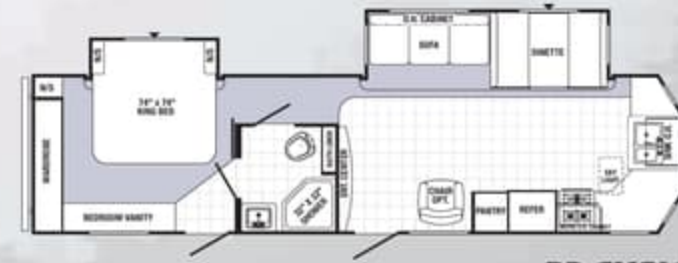
31 FKBS*



31 RDKS



32 DBKS



32 FKSL*

*These travel trailer models are available with the Optional Residential Package.

Travel Trailers	19-RL	22-RB	23-FB	25-RBSS	25-RS	26-RLSS	28-DSBS	28-RBSS	29-RBKS	30-DBSS	30-FBSS	30-FQSS	30-RLSS	30-RKSS	31-BHSS	31-DBTS	31-FKBS	31-RDKS	32-DBKS	32-FKSL
Hitch Dry Weight (lbs.)	446	460	673	651	600	680	836	950	850	788	1155	936	814	1027	890	879	1020	902	758	1410
Dry Axle Weight (lbs.)	3802	4808	3985	5618	4430	5939	6050	5607	6506	6367	6975	5897	6872	5970	6812	7258	7064	6379	7895	6652
Total Dry Weight (lbs.)	4248	5530	4658	6269	5030	6619	6886	6557	7356	7155	8130	6833	7686	6997	7702	8137	8084	7281	8703	8062
GVWR (lbs.)	6082	7364	6493	8603	7064	8954	9220	8892	9650	9490	10663	9368	9614	9531	10236	10671	10618	9616	10902	10596
Carrying Capacity (lbs.)	1800	1800	1800	2300	2000	2300	2300	2300	2260	2300	2500	2500	1894	2500	2500	2500	2500	2300	2215	2500
Overall Length	23'7"	26'6"	27'4"	29'6"	28'0"	31'2"	32'2"	31'11"	33'7"	33'5"	34'8"	32'9"	34'9"	33'10"	35'4"	35'7"	35'9"	34'5"	36'9"	35'11"
Tire Size	14"	14"	14"	15"	14"	15"	15"	15"	15"	15"	15"	15"	15"	15"	15"	15"	15"	15"	15"	15"
Interior Height	80"	80"	80"	80"	80"	80"	80"	80"	80"	80"	80"	80"	80"	80"	80"	80"	80"	80"	80"	80"
Exterior Height w/AC	10'5"	10'5"	10'5"	10'5"	10'5"	10'5"	11'1"	11'1"	11'1"	11'1"	11'1"	11'1"	11'1"	11'1"	11'1"	11'1"	11'1"	11'1"	11'1"	11'1"
Exterior Width	96"	96"	96"	96"	96"	96"	96"	96"	96"	96"	96"	96"	96"	96"	96"	96"	96"	96"	96"	96"
Fresh Water Capacity (gal.)	51	51	51	51	51	51	51	51	51	51	51	51	51	51	51	51	51	51	51	51
Black Water Capacity (gal.)	32	32	42	42	42	42	32	42	32	42	42	42	42	32	32	32	42	42	42	42
Grey Water Capacity (gal.)	42	42	42	32	42	42	74	42	74	42	42	42	74	84	42	42	84	42	74	74
Awning Size	15'	14'	18'	21'	20'	21'	17'	16'	21'	18'	21'	18'	13'	21'	21'	18'	21'	12'	13'	20'

Fifth Wheels

Puma offers five Fifth Wheel floor plans. All models feature oil rubbed bronze hardware and are loaded with storage.



230 FBS



253 FBS



259 RBSS



281 RBKS



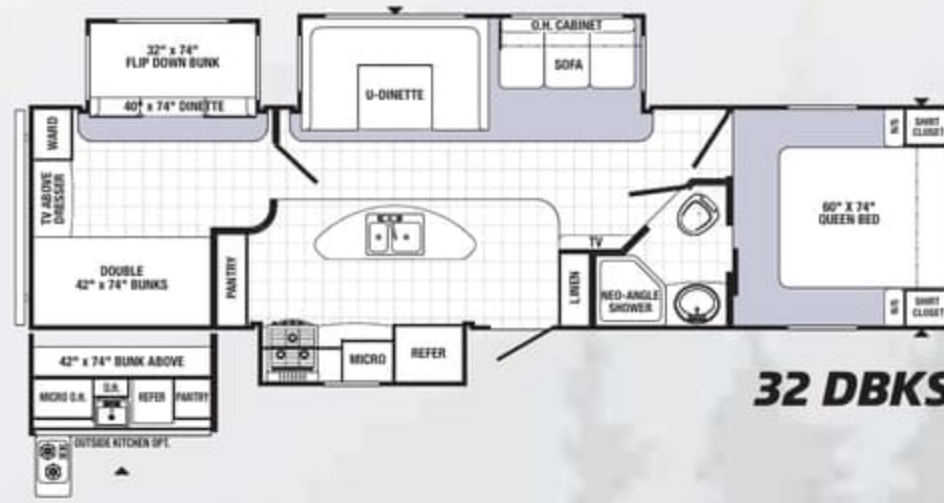
295 BHSS

Fifth Wheels	230-FBS	253-FBS	259-RBSS	281-RBKS	295-BHSS
Hitch Dry Weight (lbs.)	1107	1027	1427	1436	1073
Dry Axle Weight (lbs.)	4663	5803	5374	6200	6796
Total Dry Weight (lbs.)	5770	6830	6801	7636	7869
GVWR (lbs.)	8103	9163	9335	10170	10603
Carrying Capacity (lbs.)	2300	2300	2500	2500	2700
Overall Length	24'6"	27'4"	29'2"	29'4"	33'7"
Tire Size	15"	15"	15"	15"	15"
Interior Height	80"	80"	80"	80"	80"
Exterior Height w/AC	12'2"	12'2"	12'4"	12'4"	12'4"
Exterior Width	96"	96"	96"	96"	96"
Fresh Water Capacity (gal.)	51	51	51	51	51
Black Water Capacity (gal.)	42	32	42	42	32
Grey Water Capacity (gal.)	42	84	74	64	74
Awning Size	14'	16'	13'	21'	18'

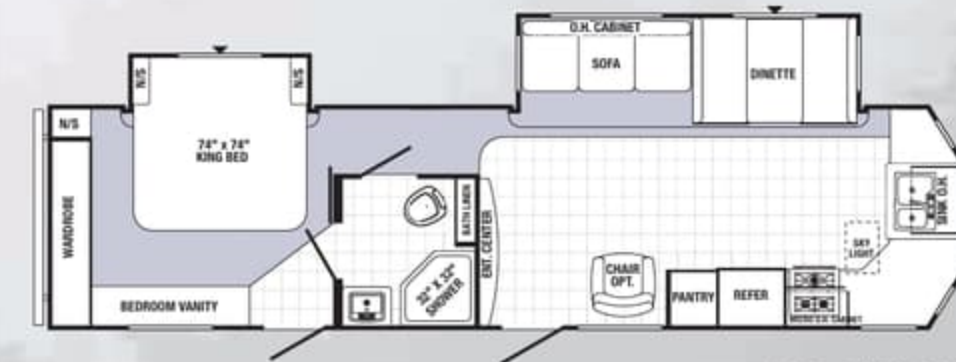
Fifth wheel weights include optional 13.5 BTU roof air, double door refer, oven and awning.



31 RDKS



32 DBKS



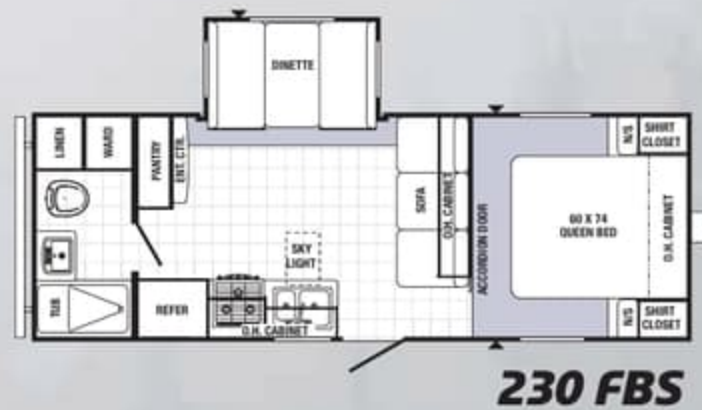
32 FKSL*

*These travel trailer models are available with the Optional Residential Package.

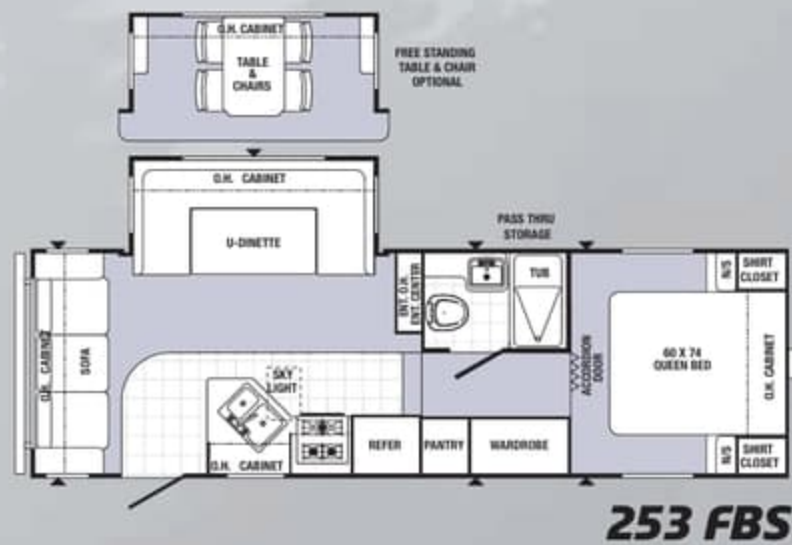
Travel Trailers	19-RL	22-RB	23-FB	25-RBSS	25-RS	26-RLSS	28-DSBS	28-RBSS	29-RBKS	30-DBSS	30-FBSS	30-FQSS	30-RLSS	30-RKSS	31-BHSS	31-DBTS	31-FKBS	31-RDKS	32-DBKS	32-FKSL
Hitch Dry Weight (lbs.)	446	460	673	651	600	680	836	950	850	788	1155	936	814	1027	890	879	1020	902	758	1410
Dry Axle Weight (lbs.)	3802	4808	3985	5618	4430	5939	6050	5607	6506	6367	6975	5897	6872	5970	6812	7258	7064	6379	7895	6652
Total Dry Weight (lbs.)	4248	5530	4658	6269	5030	6619	6886	6557	7356	7155	8130	6833	7686	6997	7702	8137	8084	7281	8703	8062
GVWR (lbs.)	6082	7364	6493	8603	7064	8954	9220	8892	9650	9490	10663	9368	9614	9531	10236	10671	10618	9616	10902	10596
Carrying Capacity (lbs.)	1800	1800	1800	2300	2000	2300	2300	2300	2260	2300	2500	2500	1894	2500	2500	2500	2500	2300	2215	2500
Overall Length	23'7"	26'6"	27'4"	29'6"	28'0"	31'2"	32'2"	31'11"	33'7"	33'5"	34'8"	32'9"	34'9"	33'10"	35'4"	35'7"	35'9"	34'5"	36'9"	35'11"
Tire Size	14"	14"	14"	15"	14"	15"	15"	15"	15"	15"	15"	15"	15"	15"	15"	15"	15"	15"	15"	15"
Interior Height	80"	80"	80"	80"	80"	80"	80"	80"	80"	80"	80"	80"	80"	80"	80"	80"	80"	80"	80"	80"
Exterior Height w/AC	10'5"	10'5"	10'5"	10'5"	10'5"	10'5"	11'1"	11'1"	11'1"	11'1"	11'1"	11'1"	11'1"	11'1"	11'1"	11'1"	11'1"	11'1"	11'1"	11'1"
Exterior Width	96"	96"	96"	96"	96"	96"	96"	96"	96"	96"	96"	96"	96"	96"	96"	96"	96"	96"	96"	96"
Fresh Water Capacity (gal.)	51	51	51	51	51	51	51	51	51	51	51	51	51	51	51	51	51	51	51	51
Black Water Capacity (gal.)	32	32	42	42	42	42	32	42	32	42	42	42	42	32	32	42	42	42	42	42
Grey Water Capacity (gal.)	42	42	42	32	42	42	74	42	74	42	42	42	74	84	42	42	84	42	74	74
Awning Size	15'	14'	18'	21'	20'	21'	17'	16'	21'	18'	21'	18'	13'	21'	21'	18'	21'	12'	13'	20'

Fifth Wheels

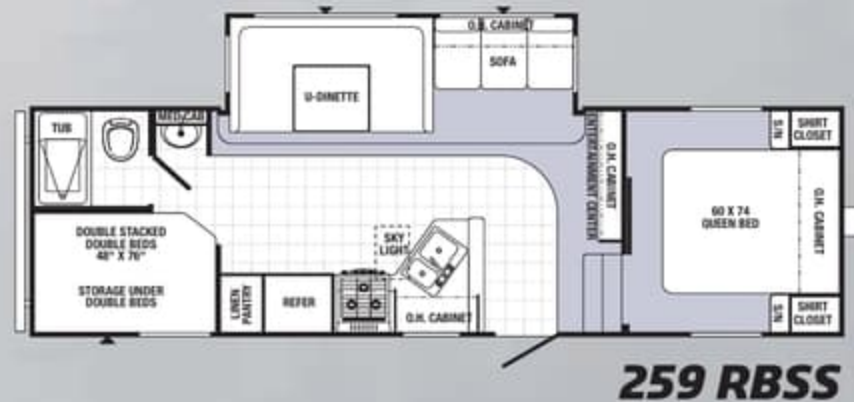
Puma offers five Fifth Wheel floor plans. All models feature oil rubbed bronze hardware and are loaded with storage.



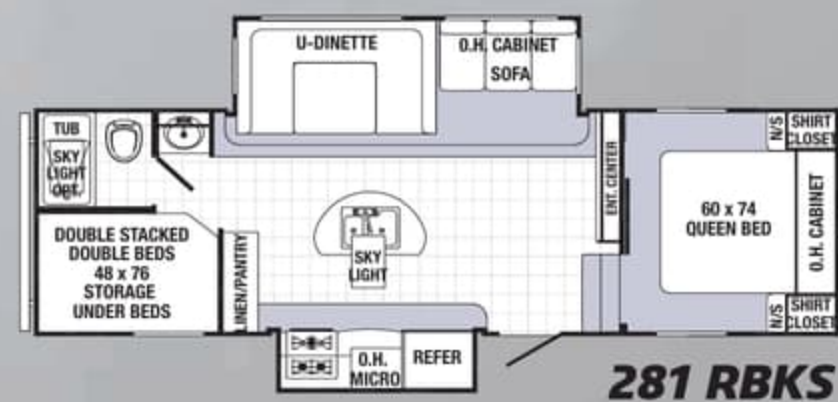
230 FBS



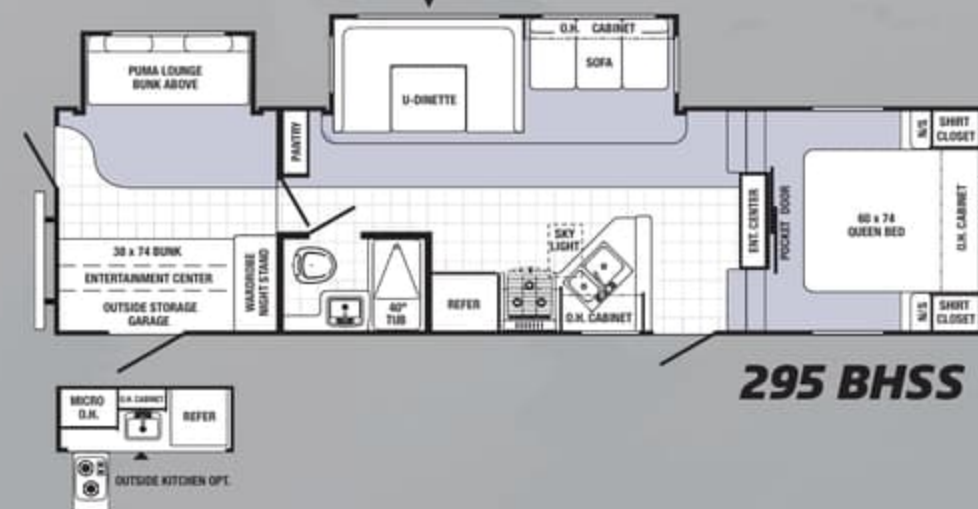
253 FBS



259 RBSS



281 RBKS



295 BHSS

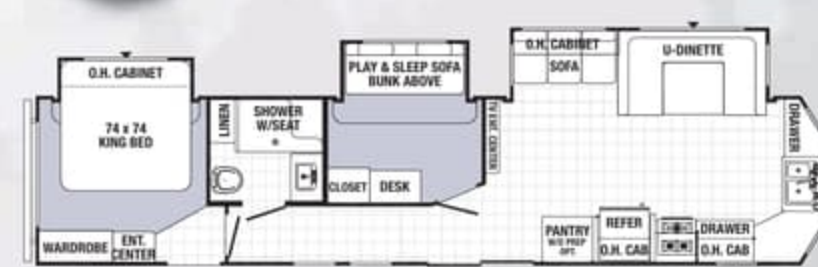
Fifth Wheels	230-FBS	253-FBS	259-RBSS	281-RBKS	295-BHSS
Hitch Dry Weight (lbs.)	1107	1027	1427	1436	1073
Dry Axle Weight (lbs.)	4663	5803	5374	6200	6796
Total Dry Weight (lbs.)	5770	6830	6801	7636	7869
GVWR (lbs.)	8103	9163	9335	10170	10603
Carrying Capacity (lbs.)	2300	2300	2500	2500	2700
Overall Length	24'6"	27'4"	29'2"	29'4"	33'7"
Tire Size	15"	15"	15"	15"	15"
Interior Height	80"	80"	80"	80"	80"
Exterior Height w/AC	12'2"	12'2"	12'4"	12'4"	12'4"
Exterior Width	96"	96"	96"	96"	96"
Fresh Water Capacity (gal.)	51	51	51	51	51
Black Water Capacity (gal.)	42	32	42	42	32
Grey Water Capacity (gal.)	42	84	74	64	74
Awning Size	14'	16'	13'	21'	18'

Fifth wheel weights include optional 13.5 BTU roof air, double door refer, oven and awning.



PUMA Park Trailers

by Palomino Trailers



Experience a great view from any seat in the house! The wide open **39PFK** is shown in Antique decor with an 18' full wall slide out sofa/chair combo, freestanding dinette and residential style chairs, plus an optional airbed sofa with a pull-out storage drawer.

Create the perfect vacation destination. Puma Park Trailers offer comfortable living with seven spacious floor plans, and a choice of two bedroom and den options for a private retreat. Residential style furnishings and a large master bedroom with king size bed give a well appointed feeling of home.



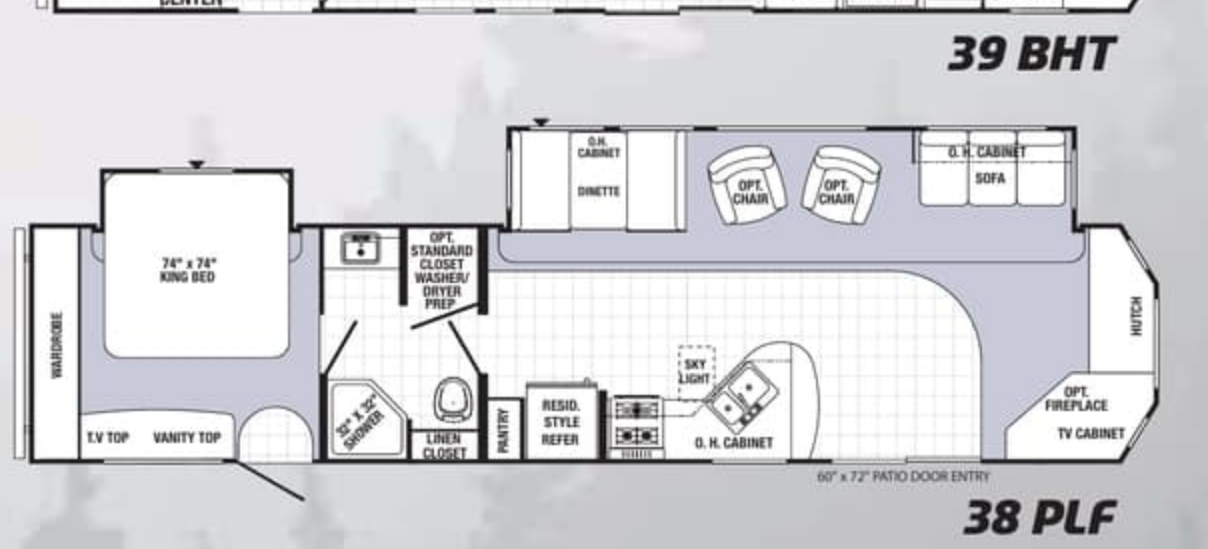
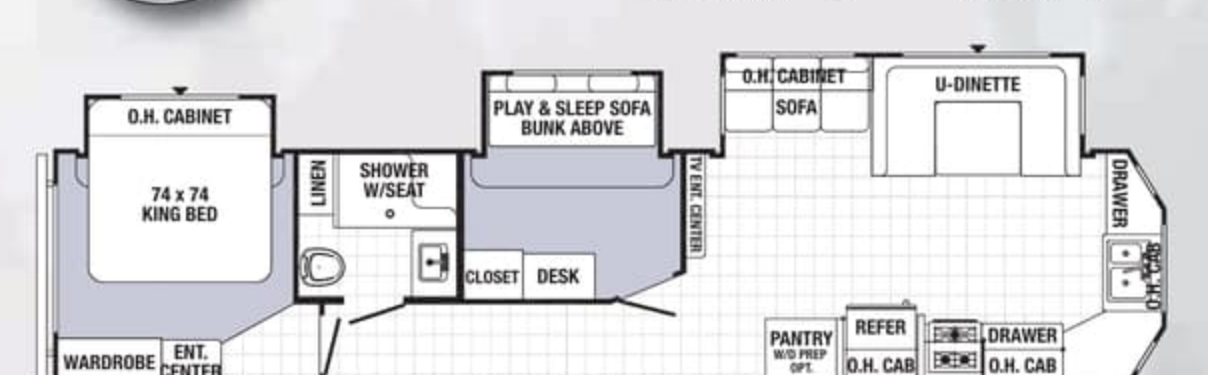
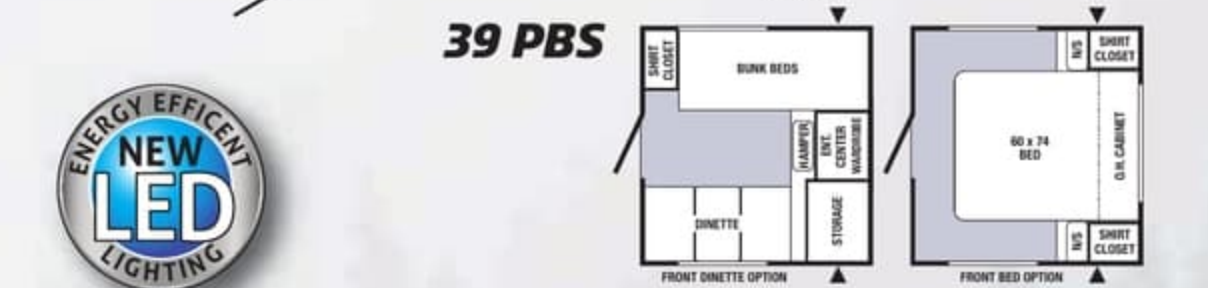
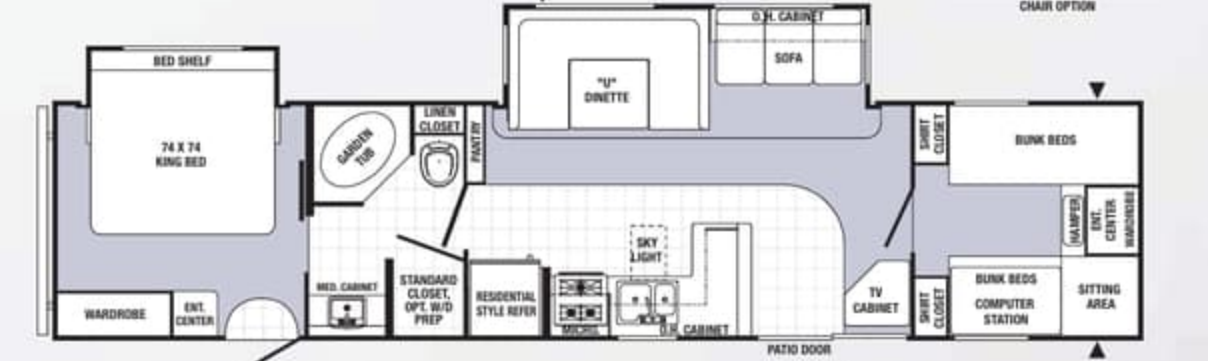
39PFK features a Neo-angle glass shower, foot flush toilet, large combination linen closet and wardrobe storage.





PUMA Park Trailers

by Palomino Trailers



Experience a great view from any seat in the house! The wide open **39PFK** is shown in Antique decor with an 18' full wall slide out sofa/chair combo, freestanding dinette and residential style chairs, plus an optional airbed sofa with a pull-out storage drawer.

Create the perfect vacation destination. Puma Park Trailers offer comfortable living with seven spacious floor plans, and a choice of two bedroom and den options for a private retreat. Residential style furnishings and a large master bedroom with king size bed give a well appointed feeling of home.

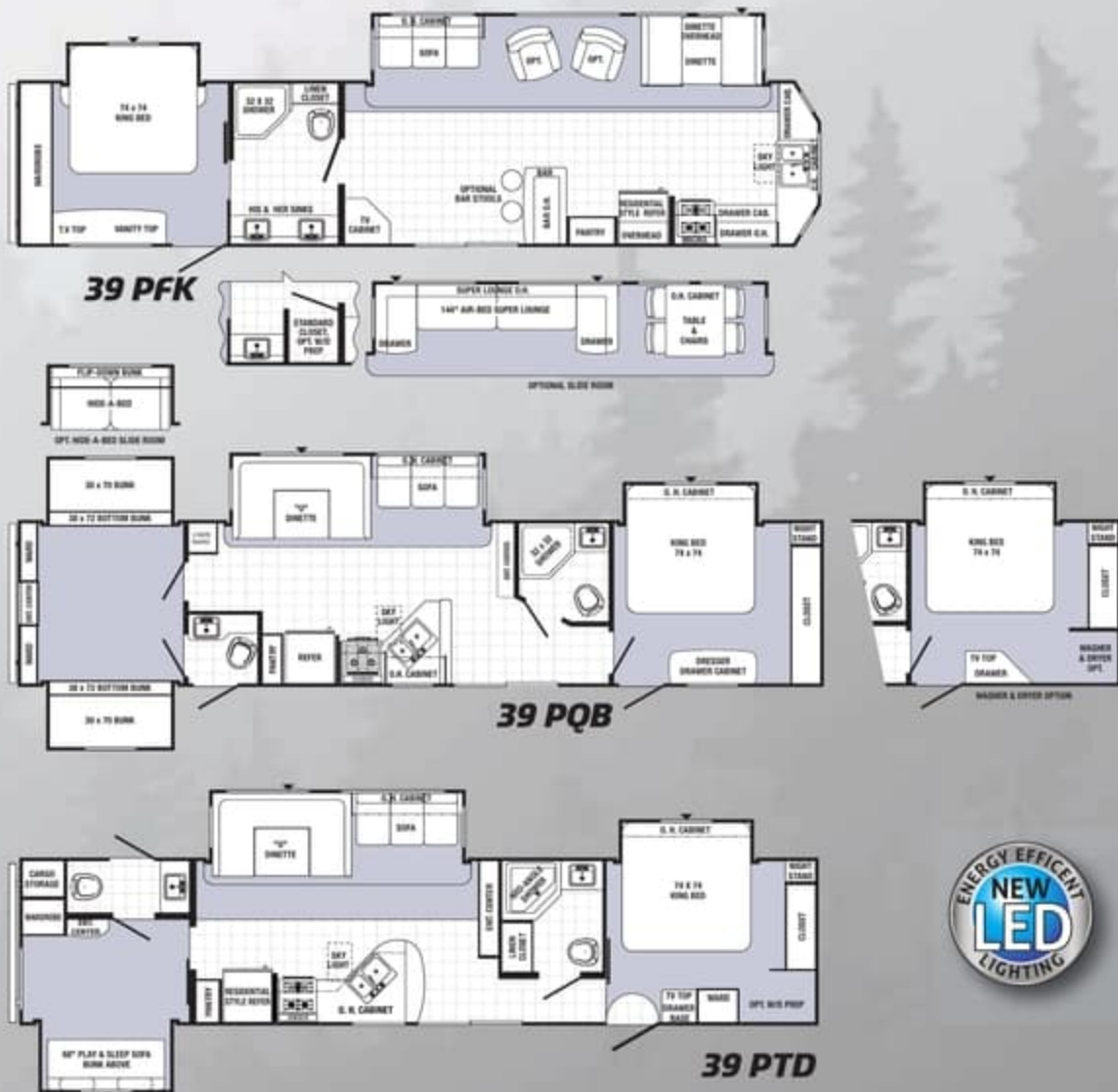


39PFK features a Neo-angle glass shower, foot flush toilet, large combination linen closet and wardrobe storage.



Models	38-PFS	38-PLF	39-PBS	39-PFK	39-BHT	39-PQB	39-PTD
Hitch Dry Weight (lbs.)	1245	1695	1295	1590	1588	1325	1405
Dry Axle Weight (lbs.)	7645	7870	7910	7845	8377	9040	8795
Total Dry Weight (lbs.)	8890	9565	9205	9435	9965	10365	10200
GVWR (lbs.)	11405	12099	11739	11970	11748	12899	11565
Carrying Capacity (lbs.)	2481	2500	2500	2500	1749	2500	1331
Overall Length	40'11"	40'10"	40'2"	40'11"	40'11"	42'6"	41'
Tire Size	15"	15"	15"	15"	15"	16"	15"
Interior Height	84"	84"	84"	84"	84"	84"	84"
Exterior Height w/AC	11'9"	11'9"	11'9"	11'9"	11'9"	11'9"	11'9"
Exterior Width	96"	96"	96"	96"	96"	96"	96"
Fresh Water Capacity (gal.)	51	51	51	51	51	51	51
Black Water Capacity (gal.)	42	42	42	42	42	84	84
Grey Water Capacity (gal.)	74	84	84	74	84	116	84
Awning Size	21'	21'	21'	21'	21'	21'	21'

Park trailer weights include optional 13.5 BTU roof air, double door refer, oven and awning.



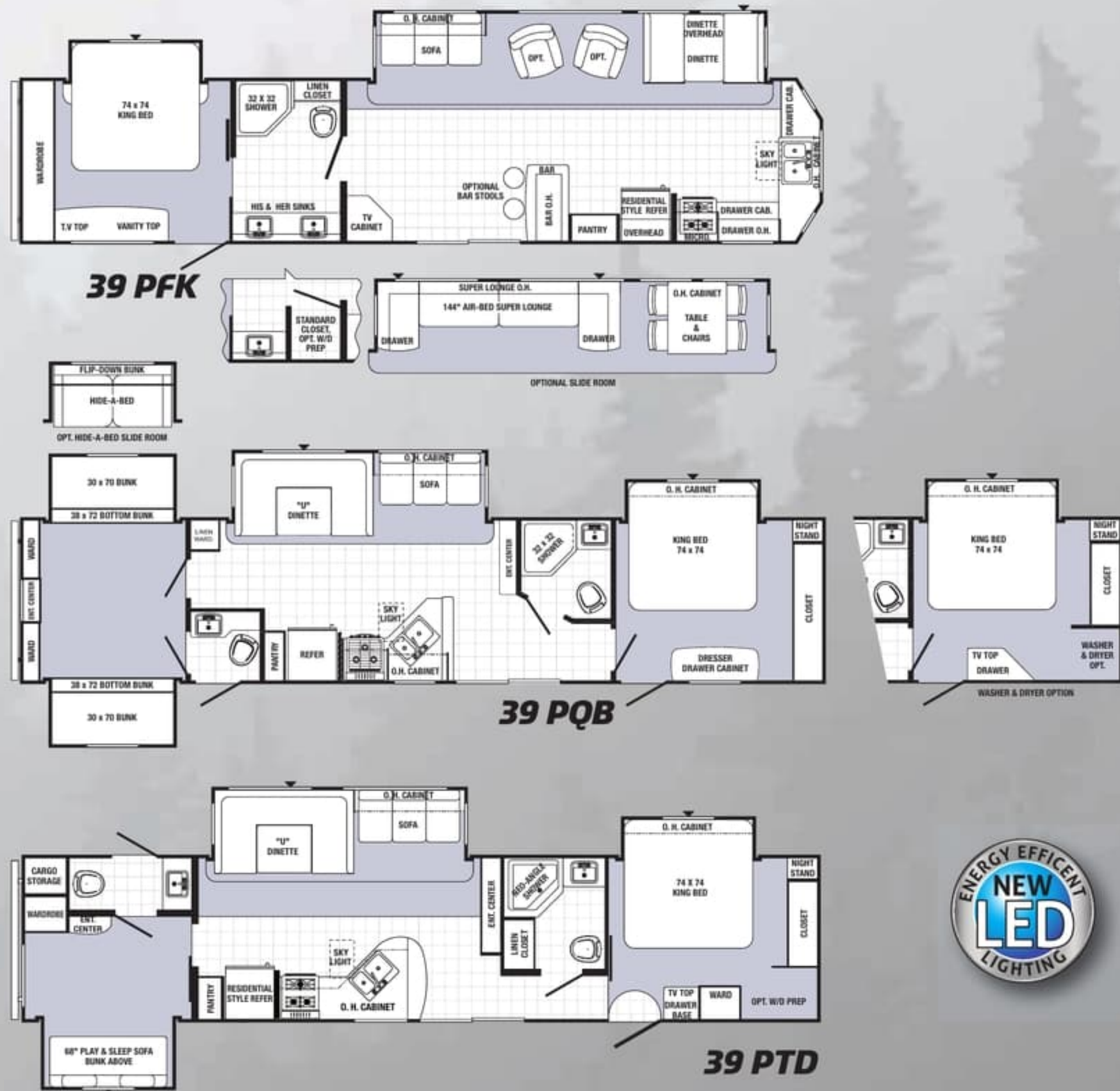
39PFK Sleek black residential kitchen appliances include a gas oven with broiler and a 18 cu. ft. refrigerator with ice maker. Now you're cooking with plenty of counter space, a large 60/40 sink, raised panel Ash cabinet doors, a built-in spice rack, and Beauflor diagonal plank flooring. Shown with an optional barstool.



39PFK This master suite includes a king bed with designer bedspread, pillow shams, built-in corner shelves and a decorative wall border. You can take it with you! Pack the large mirrored wardrobe and the six drawer dresser for an extended stay!

Models	38-PFS	38-PLF	39-PBS	39-PFK	39-BHT	39-PQB	39-PTD
Hitch Dry Weight (lbs.)	1245	1695	1295	1590	1588	1325	1405
Dry Axle Weight (lbs.)	7645	7870	7910	7845	8377	9040	8795
Total Dry Weight (lbs.)	8890	9565	9205	9435	9965	10365	10200
GVWR (lbs.)	11405	12099	11739	11970	11748	12899	11565
Carrying Capacity (lbs.)	2481	2500	2500	2500	1749	2500	1331
Overall Length	40'11"	40'10"	40'2"	40'11"	40'11"	42'6"	41'
Tire Size	15"	15"	15"	15"	15"	16"	15"
Interior Height	84"	84"	84"	84"	84"	84"	84"
Exterior Height w/AC	11'9"	11'9"	11'9"	11'9"	11'9"	11'9"	11'9"
Exterior Width	96"	96"	96"	96"	96"	96"	96"
Fresh Water Capacity (gal.)	51	51	51	51	51	51	51
Black Water Capacity (gal.)	42	42	42	42	42	84	84
Grey Water Capacity (gal.)	74	84	84	74	84	116	84
Awning Size	21'	21'	21'	21'	21'	21'	21'

Park trailer weights include optional 13.5 BTU roof air, double door refer, oven and awning.



39PFK Sleek black residential kitchen appliances include a gas oven with broiler and a 18 cu. ft. refrigerator with ice maker. Now you're cooking with plenty of counter space, a large 60/40 sink, raised panel Ash cabinet doors, a built-in spice rack, and Beauflor diagonal plank flooring. Shown with an optional barstool.



39PFK This master suite includes a king bed with designer bedspread, pillow shams, built-in corner shelves and a decorative wall border. You can take it with you! Pack the large mirrored wardrobe and the six drawer dresser for an extended stay!



PUMA

by Palomino

Toy Haulers



Play Time Well Spent

Take your toys and friends...head out for an adventure.

359THKS This NEW kitchen slide floorplan boasts wide open living spaces, cherry cabinets and a large sectional sofa with a built-in tri-fold sleeper. Shown in Mocha decor.



359THKS The 12' garage includes heavy duty tie-downs, anchored into an 8" x14" steel plate welded to the frame for secure travel. Optional dual electric queen bunk beds add cargo area sleeping quarters. A fuel station option is available.





PUMA

by Palomino

Toy Haulers



Play Time Well Spent

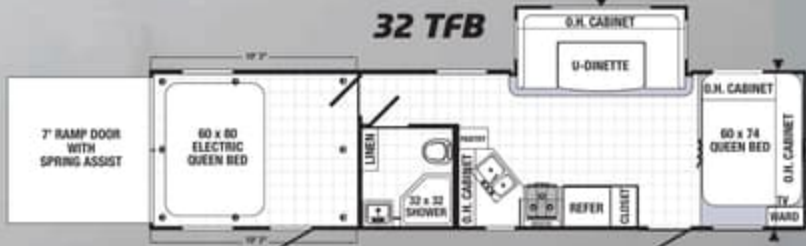
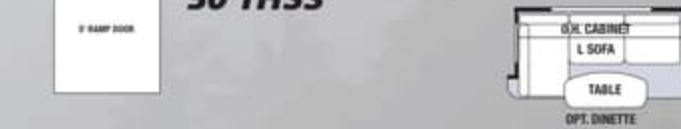
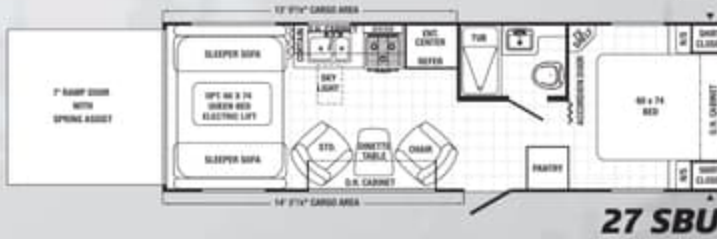
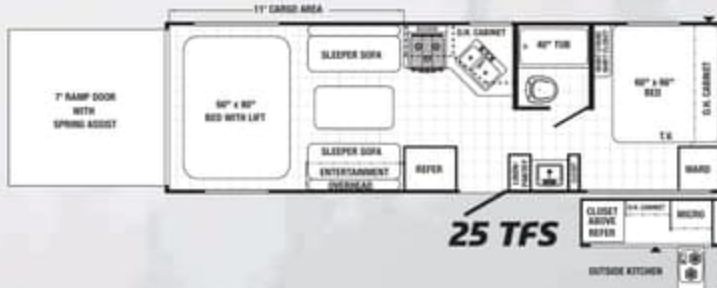
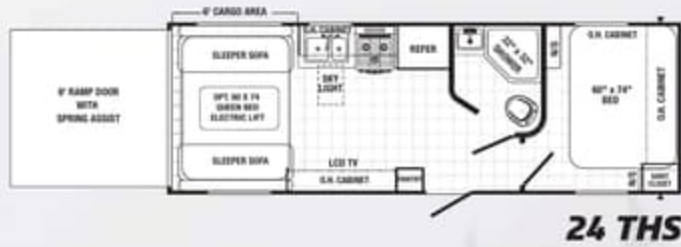
Take your toys and friends...head out for an adventure.

359THKS This NEW kitchen slide floorplan boasts wide open living spaces, cherry cabinets and a large sectional sofa with a built-in tri-fold sleeper. Shown in Mocha decor.



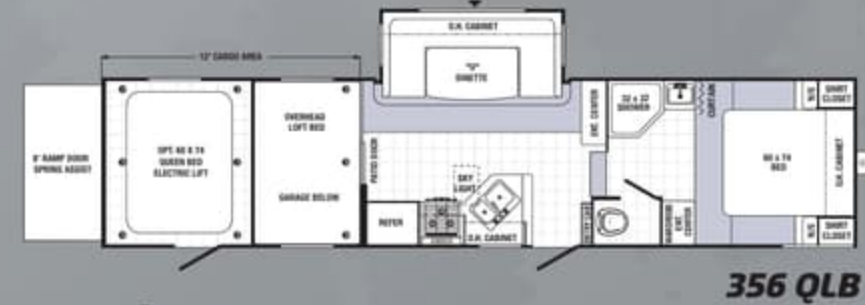
359THKS The 12' garage includes heavy duty tie-downs, anchored into an 8" x 14" steel plate welded to the frame for secure travel. Optional dual electric queen bunk beds add cargo area sleeping quarters. A fuel station option is available.





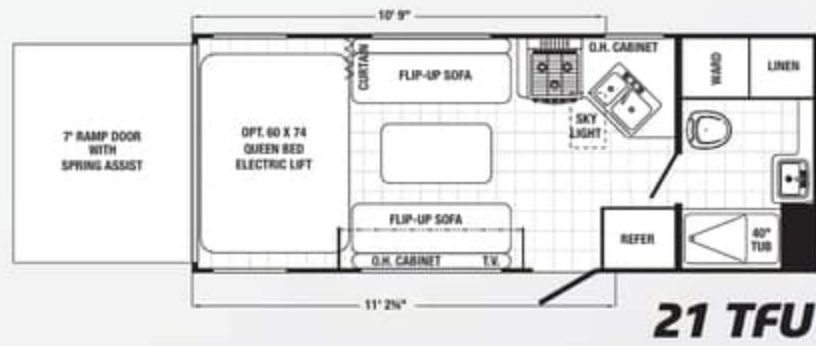
Models	21-TFU	24-THS	25-TFS	27-SBU	30-THSS	32-TFB	298-FQU	351-THSS	356-QLB	359-THKS
Hitch Dry Weight (lbs.)	861	536	797	902	1145	1110	1819	1481	2557	2090
Dry Axle Weight (lbs.)	4672	5882	6153	6028	6200	7153	5810	7950	6651	7895
Total Dry Weight (lbs.)	5533	6418	6950	6930	7345	8263	7629	9431	9208	9985
GVWR (lbs.)	7861	9452	10483	10464	10879	11270	11163	13465	13243	14020
Carrying Capacity (lbs.)	2294	3000	3500	3500	3500	2957	3500	4000	4000	4000
Overall Length	25'0"	27'11"	29'7"	30'2"	35'4"	36'2"	30'11"	37'0"	36'2"	36'8"
Tire Size	205/75D/14	225/75R/15D	225/75D/15	225/75D/15	225/75D/15	225/75D/15	225/75D/15	235/80D/16	235/80D/16	235/80D/16
Interior Height	84"-96"	84"-96"	84"-96"	84"-96"	96"	96"	96"	84"-96"	84"-96"	84"-96"
Exterior Height w/AC	12'	12'	12'	12'	11'1"	11'1"	12'	12'	13'2"	13'2"
Exterior Width	96"	96"	96"	96"	96"	96"	96"	96"	96"	96"
Fresh Water Capacity (gal.)	51	51	100	100	100	100	100	100	100	100
Black Water Capacity (gal.)	42	42	42	32	32	42	32	42	42	32
Grey Water Capacity (gal.)	32	42	42	42	42	42	42	32	74	42
Awning Size	14'	13'	14'	15'	16'	16'	18'	21'	21'	21'

Puma Toy Hauler Fifth Wheels

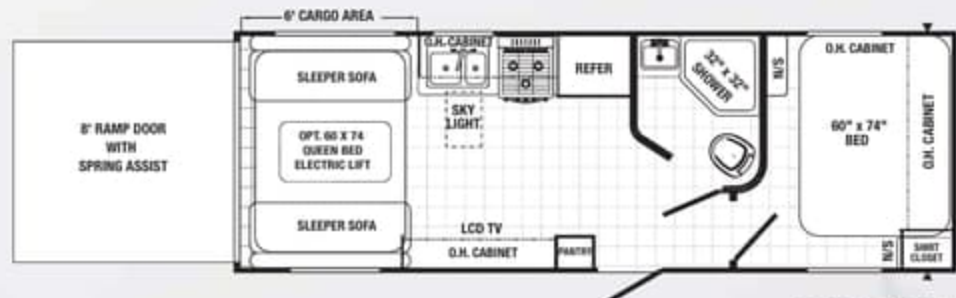


Puma Toy Haulers are equipped with long-life LED lighting inside and out.

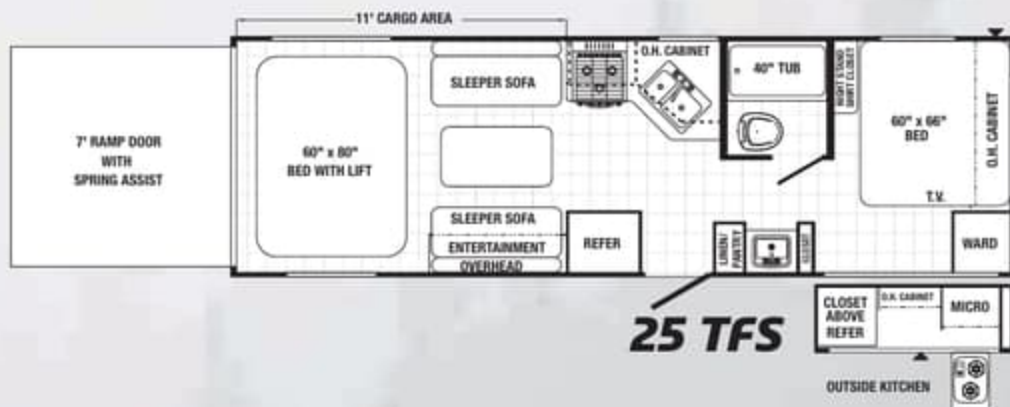




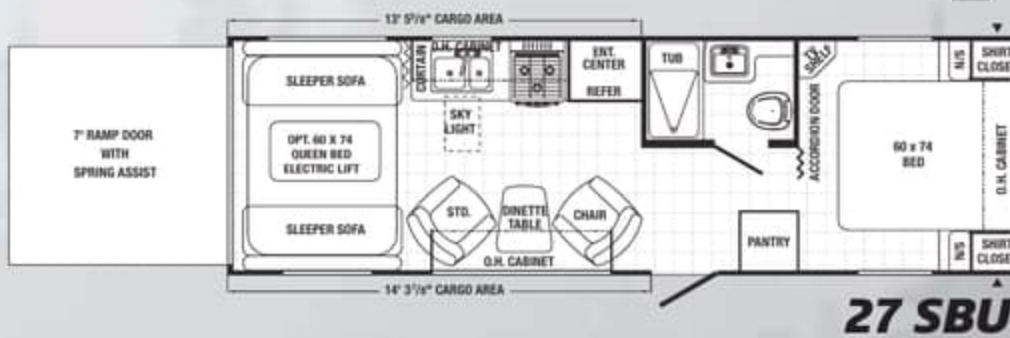
21 TFU



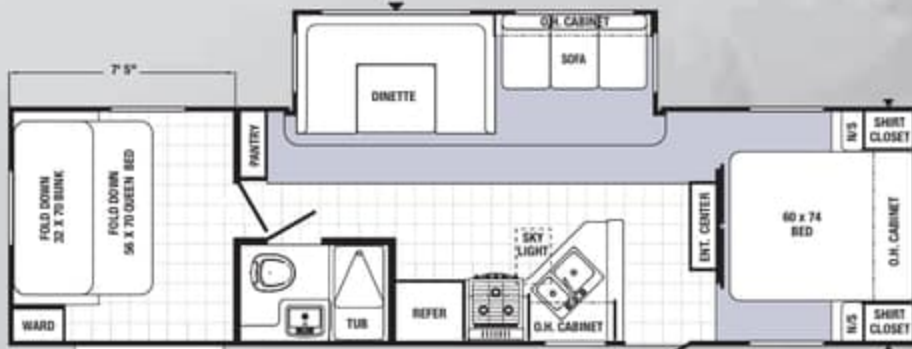
24 THS



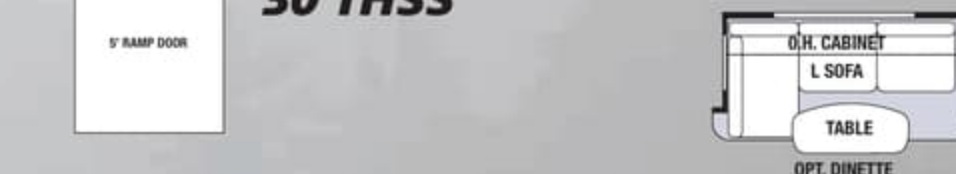
25 TFS



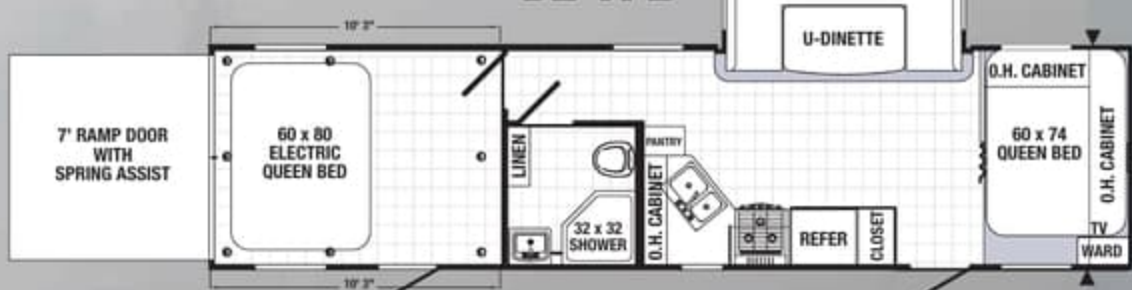
27 SBU



30 THSS



32 TFB



Puma Toy Hauler Fifth Wheels

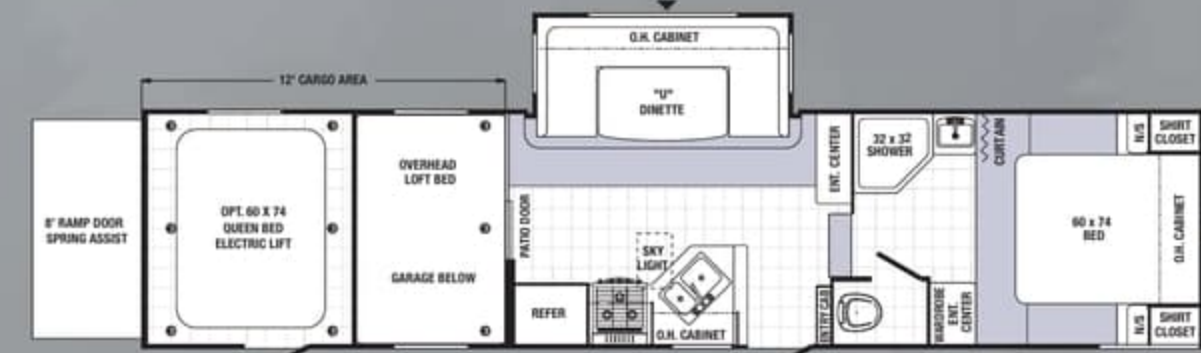


298 FQU

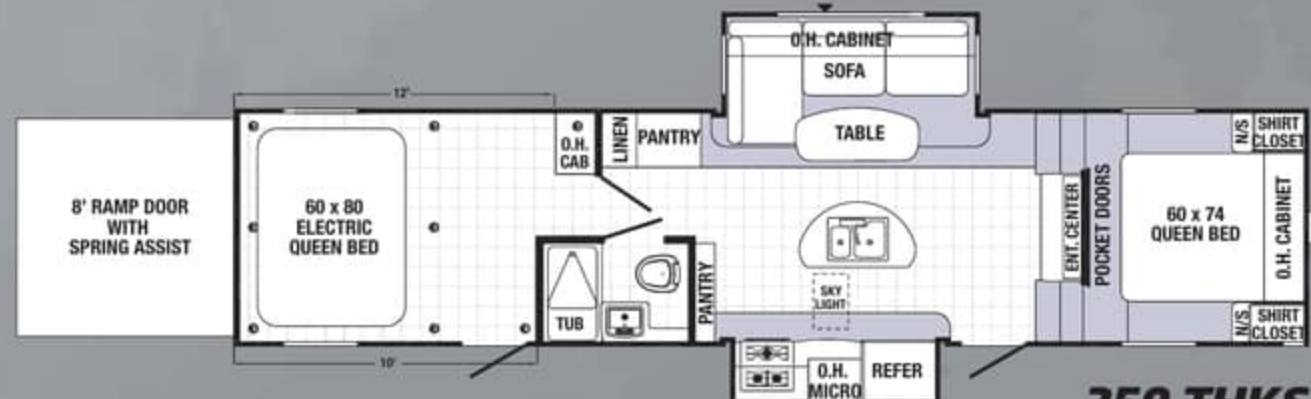


351 THSS

Puma Toy Haulers are equipped with long-life LED lighting inside and out.



356 QLB



359 THKS

Models	21-TFU	24-THS	25-TFS	27-SBU	30-THSS	32-TFB	298-FQU	351-THSS	356-QLB	359-THKS
Hitch Dry Weight (lbs.)	861	536	797	902	1145	1110	1819	1481	2557	2090
Dry Axle Weight (lbs.)	4672	5882	6153	6028	6200	7153	5810	7950	6651	7895
Total Dry Weight (lbs.)	5533	6418	6950	6930	7345	8263	7629	9431	9208	9985
GVWR (lbs.)	7861	9452	10483	10464	10879	11270	11163	13465	13243	14020
Carrying Capacity (lbs.)	2294	3000	3500	3500	3500	2957	3500	4000	4000	4000
Overall Length	25'0"	27'11"	29'7"	30'2"	35'4"	36'2"	30'11"	37'0"	36'2"	36'8"
Tire Size	205/75D/14	225/75R/15D	225/75D/15	225/75D/15	225/75D/15	225/75D/15	225/75D/15	235/80D/16	235/80D/16	235/80D/16
Interior Height	84"-96"	84"-96"	84"-96"	84"-96"	96"	96"	96"	84"-96"	84"-96"	84"-96"
Exterior Height w/AC	12'	12'	12'	12'	11'1"	11'1"	12'	12'	13'2"	13'2"
Exterior Width	96"	96"	96"	96"	96"	96"	96"	96"	96"	96"
Fresh Water Capacity (gal.)	51	51	100	100	100	100	100	100	100	100
Black Water Capacity (gal.)	42	42	42	32	32	42	32	42	42	32
Grey Water Capacity (gal.)	32	42	42	42	42	42	42	32	74	42
Awning Size	14'	13'	14'	15'	16'	16'	18'	21'	21'	21'

Puma Construction



- A. Rubber Roof (12 year warranty)
- B. Rugged, Powder Coated Steel I-Beam Frame
- C. Sturdy .024 Gauge Aluminum Skin
- D. Exterior Amber Lens Patio Light
- E. Exterior Hitch Light for Night-Time Hook Up
- F. 51 Gallon Fresh Water Tank
- G. Bold Exterior Graphics
- H. Residential Grade Carpet-17 oz. with Pad
- I. Color Band Metal Enhances Exterior Looks
- J. Sidewall Studding Spaced 16" Apart
- K. Longitudinal Floor Studding Spaced 12" Apart
- L. 5/8" One Piece Floor Decking
- M. New Beauflor® Linoleum Flooring Cold Crack Resistant
- N. R 7 Fiberglass Insulation Cut and Glued Between Sidewall Studs
- O. 4-1/2" Crowned Truss Roof Rafters
- P. Steel Crossmembers for Added Support
- Q. Floor Ducted Heat
- R. Insulated Wrapped Ducted Air Conditioning Runs
- S. 3/8" Roof Decking
- T. Puma "Next Generation™" Enclosed and Heated Water Tank
- U. Radius Exterior Doors

PUMA
by Palomino

Longer Lasting ♦ Better Built

Puma Construction



- A.** Rubber Roof (12 year warranty)
- B.** Rugged, Powder Coated Steel I-Beam Frame
- C.** Sturdy .024 Gauge Aluminum Skin
- D.** Exterior Amber Lens Patio Light
- E.** Exterior Hitch Light for Night-Time Hook Up
- F.** 51 Gallon Fresh Water Tank
- G.** Bold Exterior Graphics
- H.** Residential Grade Carpet-17 oz. with Pad
- I.** Color Band Metal Enhances Exterior Looks
- J.** Sidewall Studding Spaced 16" Apart
- K.** Longitudinal Floor Studding Spaced 12" Apart
- L.** 5/8" One Piece Floor Decking
- M.** New Beauflor® Linoleum Flooring Cold Crack Resistant
- N.** R 7 Fiberglass Insulation Cut and Glued Between Sidewall Studs
- O.** 4-1/2" Crowned Truss Roof Rafters
- P.** Steel Crossmembers for Added Support
- Q.** Floor Ducted Heat
- R.** Insulated Wrapped Ducted Air Conditioning Runs
- S.** 3/8" Roof Decking
- T.** Puma "Next Generation™" Enclosed and Heated Water Tank
- U.** Radius Exterior Doors

PUMA
by Palomino

Longer Lasting ♦ Better Built



Puma Features

Toy Hauler Features



Outside Entertainment
(Available on Select Models)



Comfortable Seating



Kitchen Skylight with Shade



Solid Wood
Drawer
Fronts



Garages include heavy duty tie-downs,
anchored into an 8" x14" steel plate
welded to the frame for secure travel.



Dramatic
energy efficient,
long-life
LED lighting



Baggage
Compartment
with sliding tray



Fuel Station



Side Paw Kitchen

This convenient outside kitchen helps you stay where the action is. The outside entertainment center lets you watch the game, while enjoying the fresh air.



Hard Valances in Bedrooms (Most models)



Decorative Backsplash



Puma Features

Toy Hauler Features



Outside Entertainment
(Available on Select Models)



Comfortable Seating



Kitchen Skylight with Shade



Solid Wood
Drawer
Fronts



Garages include heavy duty tie-downs,
anchored into an 8" x14" steel plate
welded to the frame for secure travel.



Dramatic
energy efficient,
long-life
LED lighting



Baggage
Compartment
with sliding tray



Fuel Station



Side Paw Kitchen

This convenient outside kitchen helps you stay where the action is. The outside entertainment center lets you watch the game, while enjoying the fresh air.



Hard Valances in Bedrooms (Most models)



Decorative Backsplash



STANDARD FEATURES

Exterior

- ◆ Radius Entry Doors
- ◆ Powder Coated Frames
- ◆ EZ Lube Axles
- ◆ Tinted Safety Glass
- ◆ Clamp Ring Windows
- ◆ Double Entry Doors (Where Applicable)
- ◆ Pass-Thru Storage (Where Applicable)
- ◆ Rubber Roof - 12 Year Manufacturer's Warranty
- ◆ 9" Three-Tier Steps
- ◆ Rain Gutters w/Large Drop Spouts
- ◆ Automotive Style Fender Skirts
- ◆ Radius Baggage Doors
- ◆ Darco Wrapped Underbelly
- ◆ One Piece, 24' Sheet, 5/8" Floor Decking (25 Year Manufacturer's Limited Warranty)
- ◆ 2 x 3 Flush Joists on 12" Centers
- ◆ LED Lighted Pass-Thru Exterior Baggage Compartments (Where Applicable)
- ◆ 2-20 lb. Gas Bottles
- ◆ 6 Gal. DSI Hot Water Heater
- ◆ Rack and Pinion Electric Slide System with Manual Override (Standard on all Slide-Out Models)
- ◆ Heavy Duty Storage Door for the Puma Den Option
- ◆ Clamp Ring Luggage Doors
- ◆ Large 14 x 34 Front Pass Thru Baggage Doors (TT Only)

Interior

- ◆ 80" Interior Height
- ◆ Ventilated Side Windows in all Slide-outs
- ◆ Insulated A/C Ducting (All Models)
- ◆ Floor Ducted Heat
- ◆ 30,000 BTU Furnace
- ◆ Flush Floor Slide-Outs
- ◆ 16" Deep Overhead Cabinets in Super-Slide Models
- ◆ Real Wood Drawers
- ◆ Kitchen Ball Bearing Drawer Guides
- ◆ LED Lighting Throughout



- ◆ NEW LED Lights w/Night Light Feature (Kitchen, Bath, Bunk Room)
- ◆ Wood Medicine Cabinet with Mirrored Door
- ◆ 60/40 Deep Double Bowl Kitchen Sink
- ◆ New High Rise Tea Pot Handle Kitchen Faucet
- ◆ Atwood 3-Burner, High Output Range
- ◆ Built-in Knife Rack
- ◆ Upgrade Window Treatment
- ◆ 55 Amp Converter with Battery Charger
- ◆ Spice Rack (Kitchen)
- ◆ Divided Silverware Drawer
- ◆ Innerspring Mattress
- ◆ Bedroom Carpet
- ◆ 1 Sink Cover
- ◆ Single Door Refrigerator
- ◆ Power Vent in Bath
- ◆ 12V Shower LED Light
- ◆ Five Interior Decors
- ◆ Coat Hooks in Entry Way (Most models)
- ◆ Quilted Bunk Mats
- ◆ Oil Rubbed Bronze Hardware, Light and Bath Fixtures
- ◆ Cabinet Doors under Dinette Seats
- ◆ Upgraded Carpet (17 oz. w/Pad)
- ◆ Upgraded Residential Beauflor® Linoleum w/7 Year cold crack warranty
- ◆ Full Length Wardrobe and Shirt Closet in Front Bedrooms (TT Only)
- ◆ Lambrequin Window Treatments (Living Room and Bedrooms)
- ◆ Solid Wood Drawer Fronts
- ◆ Kitchen Skylight
- ◆ Decorative Kitchen Splashboard
- ◆ Hard Valances in all Bedrooms (Most Models)
- ◆ New Larger Countertops (Most Models)

Standard Safety Features

- ◆ CO2 Detector
- ◆ LP Leak Detector
- ◆ Fire Extinguisher
- ◆ Smoke Detector

Travel Trailers and Fifth Wheels

Options

- ◆ Cherry Cabinets
- ◆ Solid Surface Countertops
- ◆ Water Purifier
- ◆ Sink Cover
- ◆ Range Cover
- ◆ Double Door Refrigerator
- ◆ 6 Gal. Gas/Electric DSI Hot Water Heater
- ◆ Water Heater By-Pass (Forced Option)
- ◆ 21" Oven
- ◆ Microwave
- ◆ Create-a-Breeze™ Fan (Exchange)
- ◆ AM/FM CD/DVD Stereo
- ◆ TV Antenna with Booster and Cable Hook-Up
- ◆ Bedroom TV Hook-Up
- ◆ Extra Roof Vent
- ◆ 13,500 BTU Ducted A/C
- ◆ 15,000 BTU Ducted A/C

Park Trailers

Additional Standards

- ◆ 6 Gal. Gas/Electric DSI Hot Water Heater
- ◆ Upgraded Serta® Mattress
- ◆ Home Theater DVD Surround Sound AM/FM/CD Player
- ◆ FS Range
- ◆ Phone Jacks
- ◆ Patio Door
- ◆ Tinted Safety Glass
- ◆ 18.2 Cu. Ft. Residential Refrigerator with Ice Maker
- ◆ Gloria Maple Glazed w/Raised Panel Doors
- ◆ Lambrequin Window Treatments
- ◆ Bedroom Roof Vent
- ◆ 35,000 BTU Furnace
- ◆ New Larger Countertops
- ◆ Upgraded Residential Beauflor® Linoleum w/7 year cold crack warranty

Options

- ◆ Cherry Cabinets
- ◆ Solid Surface Countertops
- ◆ Water Purifier
- ◆ Sink Cover
- ◆ 12 Gal. Gas/Electric Water Heater
- ◆ Water Heater By-Pass
- ◆ Range Cover
- ◆ Oven

- ◆ Bedspread
- ◆ Outside Grill
- ◆ Tub Surround
- ◆ Mini Blinds
- ◆ Day/Night Shades
- ◆ Wall Border
- ◆ Front Window with Rock Guard (TT Only)
- ◆ Awning
- ◆ Electric Awning w/LED Lights
- ◆ 2 Stabilizer Jacks
- ◆ 4 Stabilizer Jacks (TT Only)
- ◆ Outside Shower
- ◆ Diamond Plate
- ◆ Fiberglass Front Cap w/Diamond Plate (Fifth Wheels & Travel Trailers)
- ◆ Power Front Jacks (Fifth Wheels Only)
- ◆ 30 lb. Gas Bottles and Cover
- ◆ 29" LED TV
- ◆ 32" LCD TV
- ◆ Spare Tire and Carrier
- ◆ PUMA Den*

- ◆ AM/FM CD/DVD Home Theater Surround Sound System
- ◆ Swivel Rocker*
- ◆ Bath Skylights
- ◆ Free Standing Dinette*
- ◆ Overhead Cabinets in Slide Room*
- ◆ Tri-fold Sofa (Where available)*
- ◆ Comfort Air Bed
- ◆ Glass Shower Door*
- ◆ Roof Ladder
- ◆ Heated Tanks
- ◆ Stacked Bunk Option
- ◆ Upgraded Serta® Mattress
- ◆ Enclosed Underbelly

Residential Package

- ◆ Residential Style 18.2 Cu. Ft. Refer
- ◆ Patio Door
- ◆ Free-Standing Range

*Available on select models.

- ◆ Microwave
- ◆ 29" LED TV
- ◆ 32" LCD TV
- ◆ 50 Amp Service
- ◆ Washer/Dryer Prep with 50 Amp Service
- ◆ Stackable Washer/Dryer Includes Prep
- ◆ Convection Microwave/Cook Top
- ◆ Create-A-Breeze™ Fan (Exchange) Fantastic Vent Fan
- ◆ 12 V. Ceiling Fan in Living Room
- ◆ 12 V. Ceiling Fan in Bedroom
- ◆ TV Antenna with Booster and Cable Hook-Up
- ◆ Bedroom TV Hook-Up
- ◆ 13,500 BTU Ducted Air Conditioning
- ◆ 15,000 BTU Ducted Air Conditioning
- ◆ King Bedspread
- ◆ Outside Grill
- ◆ Outside Shower
- ◆ 30" Entry Door IPO of Sliding Patio Door
- ◆ Tub Surround
- ◆ Bath Skylight
- ◆ Glass Shower Door
- ◆ Mini Blinds
- ◆ Day/Night Shades
- ◆ Freestanding Dinette
- ◆ Overhead Cabinets in Slide Room
- ◆ Wall Border

Residential Package

- ◆ 18.2 Cu. Ft. Residential Refrigerator with Ice Maker
- ◆ Patio Door
- ◆ Free-Standing Range

*Available on select models.



STANDARD FEATURES

Exterior

- ◆ Radius Entry Doors
- ◆ Powder Coated Frames
- ◆ EZ Lube Axles
- ◆ Tinted Safety Glass
- ◆ Clamp Ring Windows
- ◆ Double Entry Doors (Where Applicable)
- ◆ Pass-Thru Storage (Where Applicable)
- ◆ Rubber Roof - 12 Year Manufacturer's Warranty
- ◆ 9" Three-Tier Steps
- ◆ Rain Gutters w/Large Drop Spouts
- ◆ Automotive Style Fender Skirts
- ◆ Radius Baggage Doors
- ◆ Darco Wrapped Underbelly
- ◆ One Piece, 24' Sheet, 5/8" Floor Decking (25 Year Manufacturer's Limited Warranty)
- ◆ 2 x 3 Flush Joists on 12" Centers
- ◆ LED Lighted Pass-Thru Exterior Baggage Compartments (Where Applicable)
- ◆ 2-20 lb. Gas Bottles
- ◆ 6 Gal. DSI Hot Water Heater
- ◆ Rack and Pinion Electric Slide System with Manual Override (Standard on all Slide-Out Models)
- ◆ Heavy Duty Storage Door for the Puma Den Option
- ◆ Clamp Ring Luggage Doors
- ◆ Large 14 x 34 Front Pass Thru Baggage Doors (TT Only)

Interior

- ◆ 80" Interior Height
- ◆ Ventilated Side Windows in all Slide-outs
- ◆ Insulated A/C Ducting (All Models)
- ◆ Floor Ducted Heat
- ◆ 30,000 BTU Furnace
- ◆ Flush Floor Slide-Outs
- ◆ 16" Deep Overhead Cabinets in Super-Slide Models
- ◆ Real Wood Drawers
- ◆ Kitchen Ball Bearing Drawer Guides
- ◆ LED Lighting Throughout



- ◆ NEW LED Lights w/Night Light Feature (Kitchen, Bath, Bunk Room)
- ◆ Wood Medicine Cabinet with Mirrored Door
- ◆ 60/40 Deep Double Bowl Kitchen Sink
- ◆ New High Rise Tea Pot Handle Kitchen Faucet
- ◆ Atwood 3-Burner, High Output Range
- ◆ Built-in Knife Rack
- ◆ Upgrade Window Treatment
- ◆ 55 Amp Converter with Battery Charger
- ◆ Spice Rack (Kitchen)
- ◆ Divided Silverware Drawer
- ◆ Innerspring Mattress
- ◆ Bedroom Carpet
- ◆ 1 Sink Cover
- ◆ Single Door Refrigerator
- ◆ Power Vent in Bath
- ◆ 12V Shower LED Light
- ◆ Five Interior Decors
- ◆ Coat Hooks in Entry Way (Most models)
- ◆ Quilted Bunk Mats
- ◆ Oil Rubbed Bronze Hardware, Light and Bath Fixtures
- ◆ Cabinet Doors under Dinette Seats
- ◆ Upgraded Carpet (17 oz. w/Pad)
- ◆ Upgraded Residential Beauflor® Linoleum w/7 Year cold crack warranty
- ◆ Full Length Wardrobe and Shirt Closet in Front Bedrooms (TT Only)
- ◆ Lambrequin Window Treatments (Living Room and Bedrooms)
- ◆ Solid Wood Drawer Fronts
- ◆ Kitchen Skylight
- ◆ Decorative Kitchen Splashboard
- ◆ Hard Valances in all Bedrooms (Most Models)
- ◆ New Larger Countertops (Most Models)

Standard Safety Features

- ◆ CO2 Detector
- ◆ LP Leak Detector
- ◆ Fire Extinguisher
- ◆ Smoke Detector

Travel Trailers and Fifth Wheels

Options

- ◆ Cherry Cabinets
- ◆ Solid Surface Countertops
- ◆ Water Purifier
- ◆ Sink Cover
- ◆ Range Cover
- ◆ Double Door Refrigerator
- ◆ 6 Gal. Gas/Electric DSI Hot Water Heater
- ◆ Water Heater By-Pass (Forced Option)
- ◆ 21" Oven
- ◆ Microwave
- ◆ Create-a-Breeze™ Fan (Exchange)
- ◆ AM/FM CD/DVD Stereo
- ◆ TV Antenna with Booster and Cable Hook-Up
- ◆ Bedroom TV Hook-Up
- ◆ Extra Roof Vent
- ◆ 13,500 BTU Ducted A/C
- ◆ 15,000 BTU Ducted A/C

Park Trailers

Additional Standards

- ◆ 6 Gal. Gas/Electric DSI Hot Water Heater
- ◆ Upgraded Serta® Mattress
- ◆ Home Theater DVD Surround Sound AM/FM/CD Player
- ◆ FS Range
- ◆ Phone Jacks
- ◆ Patio Door
- ◆ Tinted Safety Glass
- ◆ 18.2 Cu. Ft. Residential Refrigerator with Ice Maker
- ◆ Gloria Maple Glazed w/Raised Panel Doors
- ◆ Lambrequin Window Treatments
- ◆ Bedroom Roof Vent
- ◆ 35,000 BTU Furnace
- ◆ New Larger Countertops
- ◆ Upgraded Residential Beauflor® Linoleum w/7 year cold crack warranty

Options

- ◆ Cherry Cabinets
- ◆ Solid Surface Countertops
- ◆ Water Purifier
- ◆ Sink Cover
- ◆ 12 Gal. Gas/Electric Water Heater
- ◆ Water Heater By-Pass
- ◆ Range Cover
- ◆ Oven

- ◆ Bedspread
- ◆ Outside Grill
- ◆ Tub Surround
- ◆ Mini Blinds
- ◆ Day/Night Shades
- ◆ Wall Border
- ◆ Front Window with Rock Guard (TT Only)
- ◆ Awning
- ◆ Electric Awning w/LED Lights
- ◆ 2 Stabilizer Jacks
- ◆ 4 Stabilizer Jacks (TT Only)
- ◆ Outside Shower
- ◆ Diamond Plate
- ◆ Fiberglass Front Cap w/Diamond Plate (Fifth Wheels & Travel Trailers)
- ◆ Power Front Jacks (Fifth Wheels Only)
- ◆ 30 lb. Gas Bottles and Cover
- ◆ 29" LED TV
- ◆ 32" LCD TV
- ◆ Spare Tire and Carrier
- ◆ PUMA Den*

- ◆ Microwave
- ◆ 29" LED TV
- ◆ 32" LCD TV
- ◆ 50 Amp Service
- ◆ Washer/Dryer Prep with 50 Amp Service
- ◆ Stackable Washer/Dryer Includes Prep
- ◆ Convection Microwave/Cook Top
- ◆ Create-A-Breeze™ Fan (Exchange) Fantastic Vent Fan
- ◆ 12 V. Ceiling Fan in Living Room
- ◆ 12 V. Ceiling Fan in Bedroom
- ◆ TV Antenna with Booster and Cable Hook-Up
- ◆ Bedroom TV Hook-Up
- ◆ 13,500 BTU Ducted Air Conditioning
- ◆ 15,000 BTU Ducted Air Conditioning
- ◆ King Bedspread
- ◆ Outside Grill
- ◆ Outside Shower
- ◆ 30" Entry Door IPO of Sliding Patio Door
- ◆ Tub Surround
- ◆ Bath Skylight
- ◆ Glass Shower Door
- ◆ Mini Blinds
- ◆ Day/Night Shades
- ◆ Freestanding Dinette
- ◆ Overhead Cabinets in Slide Room
- ◆ Wall Border

- ◆ AM/FM CD/DVD Home Theater Surround Sound System
- ◆ Swivel Rocker*
- ◆ Bath Skylights
- ◆ Free Standing Dinette*
- ◆ Overhead Cabinets in Slide Room*
- ◆ Tri-fold Sofa (Where available)*
- ◆ Comfort Air Bed
- ◆ Glass Shower Door*
- ◆ Roof Ladder
- ◆ Heated Tanks
- ◆ Stacked Bunk Option
- ◆ Upgraded Serta® Mattress
- ◆ Enclosed Underbelly

Residential Package

- ◆ Residential Style 18.2 Cu. Ft. Refer
- ◆ Patio Door
- ◆ Free-Standing Range

*Available on select models.

- ◆ Woodgrain Linoleum
- ◆ Bar Stools (2 per Floorplan)
- ◆ Swivel Rocker
- ◆ 2 Exterior Speakers
- ◆ Tri-fold Sofa
- ◆ 2 Swivel Recliners*
- ◆ Comfort Air Bed
- ◆ 21' Awning
- ◆ Electric Awning
- ◆ 2 Stabilizer Jacks
- ◆ 4 Stabilizer Jacks
- ◆ Roof Ladder
- ◆ Diamond Plate
- ◆ 30 Lb. Gas Bottles and Cover
- ◆ Heated Tanks
- ◆ Spare Tire and Carrier
- ◆ Folding Grab Handle
- ◆ Carbon Monoxide Detector
- ◆ Fireplace (Available Certain Models)
- ◆ Z240

Residential Package

- ◆ 18.2 Cu. Ft. Residential Refrigerator with Ice Maker
- ◆ Patio Door
- ◆ Free-Standing Range

*Available on select models.

Toy Haulers

Additional Standards

- ◆ Heavy Duty I-Beam Frames with EZ Lube Axles
- ◆ 1/4" x 8" Tie Down Reinforcement Plates for Secure Cargo Tie Downs
- ◆ Beaver Tail Rear Floor for Easy Loading
- ◆ 2" x 2" Wood Framed Sidewalls on 16" Centers
- ◆ 2" x 3" Floor Joist on 10" Centers
- ◆ R-7 Insulation Floor, Walls, and Ceiling for Comfort
- ◆ One Piece 5/8" Floor Decking with a 25 Year Limited Warranty
- ◆ One Piece Beauflor® Linoleum
- ◆ 3/8" Walkable Roof Decking Over 4-1/2" Crowned Roof Rafters
- ◆ One Piece Rubber Roof with 12 Year Warranty
- ◆ Insulated Duct For Air Conditioning in Ceiling
- ◆ Floor Ducted Heat
- ◆ 55 Amp Converter Standard

- ◆ 7' Rear Ramp Door, (8' on 356 QLB, 359 THKS)
- ◆ 5.1 Dolby Surround Sound System with Sub-Woofers, AM/FM/DVD Player, Weather Band, and Plug-In for iPod (N/A 21 TFB and 21 TFU)
- ◆ 29" LED TV with Movable Bracket for Easy Mounting Inside or Outside (Most Models)
- ◆ Front Baggage Compartment with Sliding Tray (27 SBU, 356 QLB & 359 THKS)
- ◆ Front Exterior Baggage Compartment
- ◆ Sofas Fold-Down into Queen Bed
- ◆ Tinted Safety Glass
- ◆ All Interiors Available w/Standard Gloria Maple Glazed Cabinets or Optional Glazed Franklin Cherry

Options

- ◆ Cherry Cabinets
- ◆ Solid Surface Countertops
- ◆ Water Purifier
- ◆ Sink Cover
- ◆ Range Cover

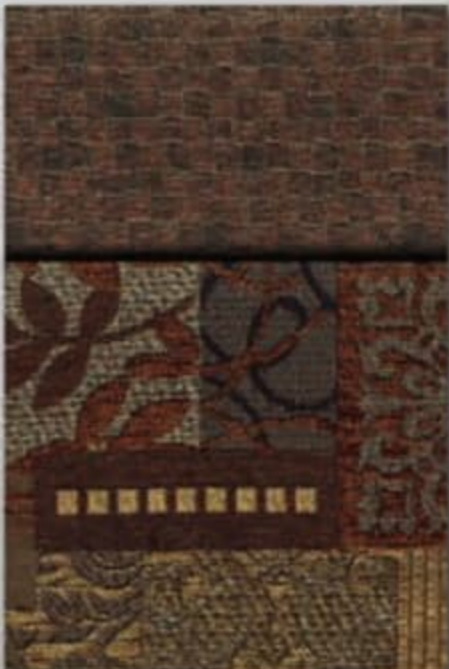
- ◆ Double Door Refrigerator
- ◆ 6 Gal. Gas/Elec. DSI Hot Water Heater
- ◆ Water Heater By-Pass
- ◆ Oven
- ◆ Microwave
- ◆ Convection Microwave/Cook Top
- ◆ Create-A-Breeze™ Fan (Exchange Fantastic Vent Fan on Travel Trailers)
- ◆ AM/FM CD/DVD Stereo (21 TFU)
- ◆ Home Theater DVD Sound System with AM/FM/CD
- ◆ 29" LED TV (Available on Most Models)
- ◆ 32" LCD TV (IPO) Where Available
- ◆ 2 Exterior Speakers
- ◆ TV Antenna with Booster and Cable Hook-Up
- ◆ Bedroom TV Hook-Up
- ◆ Extra Roof Vent
- ◆ 13,500 BTU Ducted Air Conditioning
- ◆ 15,000 BTU Ducted Air Conditioning
- ◆ Bedspread

- ◆ Manual Track Queen Bed
- ◆ Single Electric Track Queen Bed
- ◆ Double Electric Track Queen Bed
- ◆ Happi Jack Electric Sofa
- ◆ Tub Surround
- ◆ Bath Skylight
- ◆ Glass Shower Door (24 THS, 356 QLB)
- ◆ Mini Blinds
- ◆ Day/Night Shades
- ◆ Wall Border
- ◆ Beauflor® Woodgrain Linoleum
- ◆ Awning
- ◆ LED Lighted Electric Awning
- ◆ 1 Swivel Chair (27 SBU Only)
- ◆ 2 Stabilizer Jacks
- ◆ 4 Stabilizer Jacks (Travel Trailers Only)
- ◆ Power Front Jacks (Fifth Wheels Only)
- ◆ Roof Ladder
- ◆ Outside Shower
- ◆ Outside Grill
- ◆ NEW 5.5 KW Gas Onan Generator

- ◆ 4.0 KW Gas Onan Generator
- ◆ 3.6 KW LP Onan Generator
- ◆ 30 Gal. Fuel Pump Station
- ◆ 30 lb. Gas Bottles and Cover
- ◆ Zip Screen
- ◆ Hide-a-Screen
- ◆ Hitch Cover (Fifth Wheels Only)
- ◆ Front Fiberglass Cap with Diamond Plate
- ◆ Diamond Plate
- ◆ Mission Alum. Modified Rim
- ◆ Heated Tanks
- ◆ Wash Down Kit
- ◆ Spare Tire and Carrier
- ◆ Folding Grab Handle
- ◆ Carbon Monoxide Detector
- ◆ Upgraded Serta® Mattress (Select Models)
- ◆ Enclosed Underbelly
- ◆ Power Package

Decor Options

Nutmeg



Antique



Bark



Mocha



Pewter



Toy Haulers

Additional Standards

- ◆ Heavy Duty I-Beam Frames with EZ Lube Axles
- ◆ 1/4" x 8" Tie Down Reinforcement Plates for Secure Cargo Tie Downs
- ◆ Beaver Tail Rear Floor for Easy Loading
- ◆ 2" x 2" Wood Framed Sidewalls on 16" Centers
- ◆ 2" x 3" Floor Joist on 10" Centers
- ◆ R-7 Insulation Floor, Walls, and Ceiling for Comfort
- ◆ One Piece 5/8" Floor Decking with a 25 Year Limited Warranty
- ◆ One Piece Beauflor® Linoleum
- ◆ 3/8" Walkable Roof Decking Over 4-1/2" Crowned Roof Rafters
- ◆ One Piece Rubber Roof with 12 Year Warranty
- ◆ Insulated Duct For Air Conditioning in Ceiling
- ◆ Floor Ducted Heat
- ◆ 55 Amp Converter Standard

- ◆ 7' Rear Ramp Door, (8' on 356 QLB, 359 THKS)
- ◆ 5.1 Dolby Surround Sound System with Sub-Woofer, AM/FM/DVD Player, Weather Band, and Plug-In for iPod (N/A 21 TFB and 21 TFU)
- ◆ 29" LED TV with Movable Bracket for Easy Mounting Inside or Outside (Most Models)
- ◆ Front Baggage Compartment with Sliding Tray (27 SBU, 356 QLB & 359 THKS)
- ◆ Front Exterior Baggage Compartment
- ◆ Sofas Fold-Down into Queen Bed
- ◆ Tinted Safety Glass
- ◆ All Interiors Available w/Standard Gloria Maple Glazed Cabinets or Optional Glazed Franklin Cherry

Options

- ◆ Cherry Cabinets
- ◆ Solid Surface Countertops
- ◆ Water Purifier
- ◆ Sink Cover
- ◆ Range Cover

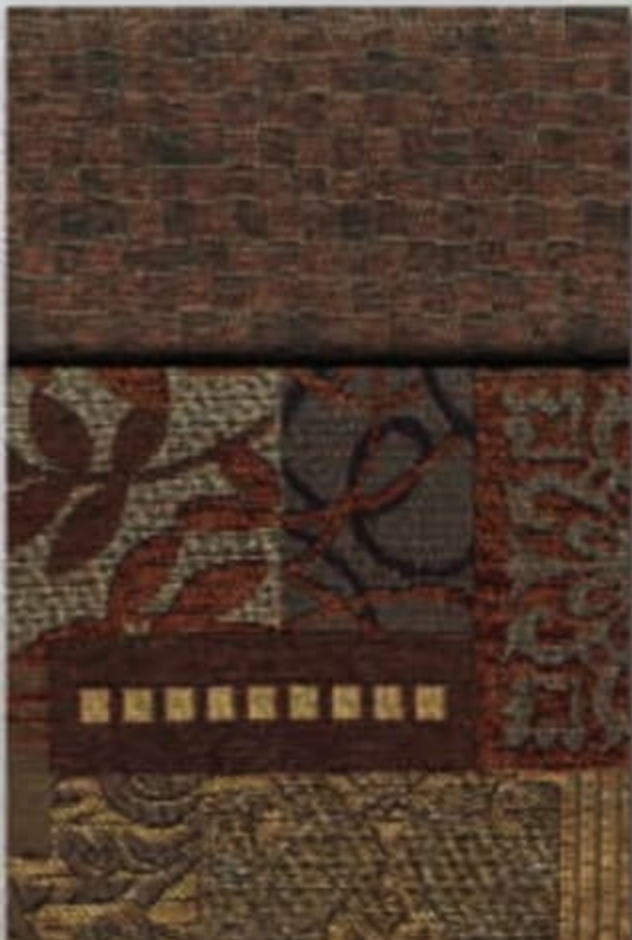
- ◆ Double Door Refrigerator
- ◆ 6 Gal. Gas/Elec. DSI Hot Water Heater
- ◆ Water Heater By-Pass
- ◆ Oven
- ◆ Microwave
- ◆ Convection Microwave/Cook Top
- ◆ Create-A-Breeze™ Fan (Exchange Fantastic Vent Fan on Travel Trailers)
- ◆ AM/FM CD/DVD Stereo (21 TFU)
- ◆ Home Theater DVD Sound System with AM/FM/CD
- ◆ 29" LED TV (Available on Most Models)
- ◆ 32" LCD TV (IPO) Where Available
- ◆ 2 Exterior Speakers
- ◆ TV Antenna with Booster and Cable Hook-Up
- ◆ Bedroom TV Hook-Up
- ◆ Extra Roof Vent
- ◆ 13,500 BTU Ducted Air Conditioning
- ◆ 15,000 BTU Ducted Air Conditioning
- ◆ Bedspread

- ◆ Manual Track Queen Bed
- ◆ Single Electric Track Queen Bed
- ◆ Double Electric Track Queen Bed
- ◆ Happi Jack Electric Sofa
- ◆ Tub Surround
- ◆ Bath Skylight
- ◆ Glass Shower Door (24 THS, 356 QLB)
- ◆ Mini Blinds
- ◆ Day/Night Shades
- ◆ Wall Border
- ◆ Beauflor® Woodgrain Linoleum
- ◆ Awning
- ◆ LED Lighted Electric Awning
- ◆ 1 Swivel Chair (27 SBU Only)
- ◆ 2 Stabilizer Jacks
- ◆ 4 Stabilizer Jacks (Travel Trailers Only)
- ◆ Power Front Jacks (Fifth Wheels Only)
- ◆ Roof Ladder
- ◆ Outside Shower
- ◆ Outside Grill
- ◆ NEW 5.5 KW Gas Onan Generator

- ◆ 4.0 KW Gas Onan Generator
- ◆ 3.6 KW LP Onan Generator
- ◆ 30 Gal. Fuel Pump Station
- ◆ 30 lb. Gas Bottles and Cover
- ◆ Zip Screen
- ◆ Hide-a-Screen
- ◆ Hitch Cover (Fifth Wheels Only)
- ◆ Front Fiberglass Cap with Diamond Plate
- ◆ Diamond Plate
- ◆ Mission Alum. Modified Rim
- ◆ Heated Tanks
- ◆ Wash Down Kit
- ◆ Spare Tire and Carrier
- ◆ Folding Grab Handle
- ◆ Carbon Monoxide Detector
- ◆ Upgraded Serta® Mattress (Select Models)
- ◆ Enclosed Underbelly
- ◆ Power Package

Decor Options

Nutmeg



Antique



Bark



Mocha



Pewter





PRE-DELIVERY INSPECTION FACILITY

20,000 square feet of quality assurance. The bare essentials for a premium product. This state-of-the-art facility gives immediate daily feedback to production for quality assurance in every unit built.



Forest River, Inc. encourages our customers to purchase their Forest River products from a local dealership whenever possible for the following reasons:

It is the goal of Forest River, Inc. that all of our RV owners fully enjoy the RV experience and that customer satisfaction meets or exceeds their expectations!

- 1) Forest River, Inc. dealers are independently owned and operated businesses so priority service and scheduling is at their discretion and is often provided to customers that purchased their unit at that dealership.
- 2) Purchasing locally allows customers to establish meaningful relationships with a dealer, enhancing the RV experience through assistance with product questions, user tips or RV regulations for your state or country, and much more!
- 3) Canadian customers must meet requirements to bring an RV purchased out of the country to their home. These requirements may involve additional inspections and certifications, taxes and fees. Your local Canadian Dealer is a professional at meeting these requirements.
- 4) Scheduling timely warranty repairs and adjustments through a local dealership provides far greater flexibility and convenience to you, the customer!

PUMA

Travel Trailers • Park Trailers
Fifth Wheels • Toy Haulers

by Palomino

Puma has a wide variety of models and floorplans to fit your lifestyle. Get out there on the prowl and enjoy leisure living at its best!

Your Puma Dealer



30RKSS Anniversary Edition Puma

24/7 EMERGENCY ROADSIDE ASSISTANCE

For a worry-free ownership experience

Forest River includes one year of Coach-Net RV Technical & Roadside Assistance with each RV purchase. Whether new to the RV lifestyle or an experienced RV enthusiast, Forest River owners have 24/7 access to technical, operational and emergency road service coverage throughout the US & Canada. Coach-Net's fast, dependable service is just a phone call away.

Coach-Net®

RV Technical & Roadside Assistance



On The Web at:
www.palominorv.com

Puma Division ♦ Forest River, Inc.
2551 Century Drive ♦ Goshen, IN 46528 ♦ 574-642-0610
www.palominorv.com

All illustrations and specifications contained in this literature are based on the latest product information at time of publication. Forest River, Inc. reserves the right to make changes in prices, colors, materials, equipment and specifications at anytime without notice and assumes no responsibility for any error in this literature. All weights shown are approximate. All units are shipped F.O.B. point of manufacture.

CONSULT YOUR LOCAL DEALER FOR WARRANTY INFORMATION. 12/13©2013 Forest River



Learn More
Scan this barcode using a QR Reader on your smart phone to learn more about Forest River.



A Berkshire Hathaway company.



PRE-DELIVERY INSPECTION FACILITY

20,000 square feet of quality assurance. The bare essentials for a premium product. This state-of-the-art facility gives immediate daily feedback to production for quality assurance in every unit built.



Forest River, Inc. encourages our customers to purchase their Forest River products from a local dealership whenever possible for the following reasons:

- 1) Forest River, Inc. dealers are independently owned and operated businesses so priority service and scheduling is at their discretion and is often provided to customers that purchased their unit at that dealership.
- 2) Purchasing locally allows customers to establish meaningful relationships with a dealer, enhancing the RV experience through assistance with product questions, user tips or RV regulations for your state or country, and much more!
- 3) Canadian customers must meet requirements to bring an RV purchased out of the country to their home. These requirements may involve additional inspections and certifications, taxes and fees. Your local Canadian Dealer is a professional at meeting these requirements.
- 4) Scheduling timely warranty repairs and adjustments through a local dealership provides far greater flexibility and convenience to you, the customer!

It is the goal of Forest River, Inc. that all of our RV owners fully enjoy the RV experience and that customer satisfaction meets or exceeds their expectations!

PUMA *by Palomino* **Travel Trailers • Park Trailers
Fifth Wheels • Toy Haulers**

**Puma has a wide variety of models and floorplans to fit your lifestyle.
Get out there on the prowl and enjoy leisure living at its best!**

Your Puma Dealer



30RKSS Anniversary Edition Puma

24/7 EMERGENCY ROADSIDE ASSISTANCE

For a worry-free ownership experience Forest River includes one year of Coach-Net RV Technical & Roadside Assistance with each RV purchase. Whether new to the RV lifestyle or an experienced RV enthusiast, Forest River owners have 24/7 access to technical, operational and emergency road service coverage throughout the US & Canada. Coach-Net's fast, dependable service is just a phone call away.

Coach-Net[®]

RV Technical & Roadside Assistance



On The Web at:
www.palominorv.com

Puma Division ♦ Forest River, Inc.
2551 Century Drive ♦ Goshen, IN 46528 ♦ 574-642-0610
www.palominorv.com

All illustrations and specifications contained in this literature are based on the latest product information at time of publication. Forest River, Inc. reserves the right to make changes in prices, colors, materials, equipment and specifications at anytime without notice and assumes no responsibility for any error in this literature. All weights shown are approximate. All units are shipped F.O.B. point of manufacture.

CONSULT YOUR LOCAL DEALER FOR WARRANTY INFORMATION. 12/13©2013 Forest River



Learn More
Scan this barcode using a QR Reader on your smart phone to learn more about Forest River.



A Berkshire Hathaway company.