

ENDURA

2006



ENDURA
By Gulf Stream

Class C Style, Class A Features



ENDURA



GALLEY • UNIVERSAL

GALLEY CONVENIENCE...

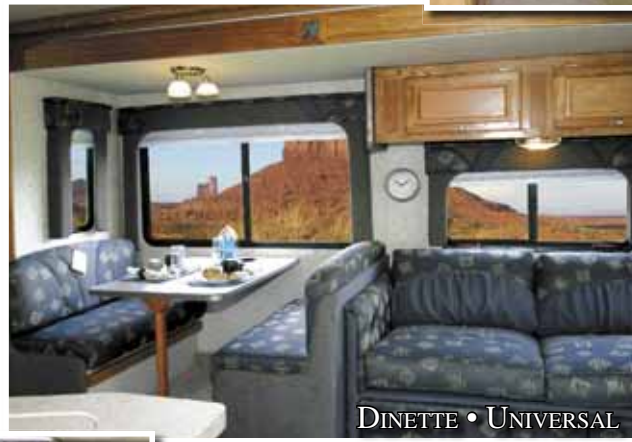
Our wide-open galley offers all the comforts of your kitchen at home. With the 3-burner high performance range; 2-door, 2-way refrigerator and large convection microwave oven, you will be able to prepare any of your family's favorite meals.



LIVING AREA • 6316

FINE DINING...

Set in the deep comfort of the Endura's slideout surrounded by windows, this dinette features Comfort plus seating and large surface area table. Our dinettes give you plenty of area to enjoy all the activities of the RV lifestyle and room to dine.



DINETTE • UNIVERSAL

SPACIOUS LIVING...

With the largest slideout in the class C industry, the Endura gives you spacious living and plentiful storage. The main living space features hardwood cabinetry, full kitchen, deluxe carpet, Comfort Plus sofa, dinette seats, and stand alone chair, residential hardware and fixtures, and your choice of either a cabover sleeping area or cabover entertainment cabinet featuring a Flat screen Television and 5.1 surround sound system to entertain you and your family during your travels.



COMFORTABLE COCKPIT • UNIVERSAL

ERGONOMIC COCKPIT...

The Cockpit of the Chevrolet Kodiak Chassis puts the controls of your rig and driving entertainment at the tips of your fingertips. Ergonomic features include, 16" steering wheel, visor mounted backup monitor, fully adjustable seats and High visibility rearview mirrors and windshield. The safety of Dual airbags will also add to your peace of mind and comfort.



LIVING AREA • CABOVER SLEEPING • 6340

GULF STREAM
COACH, INC.



LIVING AREA • MODEL 6378

ENDURA



BEDROOM • MODEL 6340

COMFORTABLE SLEEP...

Gulf Stream knows that a good night's rest is important for you to enjoy your time in your new home on wheels. With a queen bed in the rear of the coach, a convertible dinette and incredibly spacious cabover sleep area you have the ability to comfortably sleep six people.



OPTIONAL SIDE-OVER LCD TV



BEDROOM • MODEL 6331

BEDROOM...

The Endura gives you three floorplan options when it comes to the rear bedroom area. The 32' 6316 single slide features a bedroom/bathroom combination. The 35' 6340 doubleslide features enormous wardrobe storage, vanity and optional TV. The 37' 6378 tripleslide featuring two-zone living also includes large wardrobe storage, optional TV, a large rear bay window and two freestanding chairs giving you the ability to utilize the bedroom as a private area during the day as well.



BATHROOM • MODEL 6378

SPACIOUS BATHROOM...

The bathroom in the Endura 6378 gives you the same bathroom setup as our high end diesel class A models. With french doors, hardwood and residential shower you will feel at home with residential style amenities. The shower features a skylight and hand held shower head for your convenience. Undersink storage and medicine cabinet are also added to help you store all your personal products out of the way.



BEDROOM • MODEL 6378



ENDURA

Chevy Kodiak Chassis

Exclusively brought to you by Gulf Stream Coach

*MULTI-LEAF
SUSPENSION*

*RUST-PROHIBITIVE
COATING ON FRAME*

*ERGONOMICALLY
SPACED STEPS*

OPTIONAL ON ALL MODELS

STABIL-RIDE™ Suspension System

The best just got better. The optional Stabil-Ride™ suspension system integrates parabolic leaf springs, auxiliary springs, a stabilizer bar and tuned shocks, designed to provide a low maintenance, stable ride comparable to the ride of a diesel pusher. Enjoy unsurpassed handling with reduced body sway particularly while cornering and superior straight-line stability.

- *INTENSE 22,000 LB. GVWR (6378)
19,500 LB. GVWR (6331,6340,6316)*
- *UP TO 2,700 LBS. CARGO CARRYING CAPACITY**
- *SUPERIOR TOWING CAPACITY 26,000 GCWR*

* CCC (Cargo Carrying Capacity) is equal to the GVWR minus each of the following: UVW, full fresh (potable) water weight (including water heater), full LP Gas weight, and SCWR



Breakaway mirrors fold 90 degrees inward or outward to manage tight spaces reducing the risk of damage



126-square inch-surface mirror including a 6x7 inch convex section on both mirrors.





BREAKAWAY MIRRORS

**EASY ACCESS
PULL FORWARD HOOD**

**POWERFUL CHEVROLET
VORTEC GAS OR
DURAMAX DIESEL**

**UP-LEVEL HEADLIGHTS
WITH CHROME TREATED
FRONT BUMPER AND GRILL**

**FOUR WHEEL
DISC BREAKING**

- 10,000 LB. HITCH RATING
- 19.5" TIRES
- DRIVER AND PASSENGER AIRBAGS
- DAYTIME RUNNING LIGHTS
- AM/FM CD PLAYER



**VORTEC™ 8.1 LITRE V8
GASOLINE ENGINE** (standard)

HP	Torque LB-FT
325hp	450



**DURAMAX™ 6600 V8
TURBO DIESEL ENGINE** (optional)

HP	Torque LB-FT
300hp	520



**ALLISON™ 1000 SERIES
AUTOMATIC TRANSMISSION** (standard)

5 speed	Gross Torque (lb-ft)
1000	545

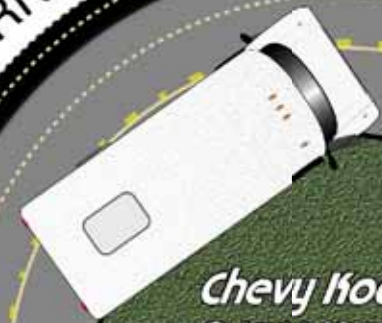
VISIBILITY AND MANEUVERABILITY

Negotiating a tricky curve in the campground or on a major city street there will be no reason to worry while you're in the Chevrolet Kodiak. With a 54 degree turning radius, giant mirrors, large windshield and sloped hood this vehicle drives more like a light duty truck. Sloped hood allows the driver to see just a mere 13 feet in front of them, doubling their field of vision versus the competition's 26 feet.

CHEVROLET KODIAK C5500 - VISIBILITY AT 13 FEET

FORD F450/F550 - VISIBILITY AT 26 FEET

BEST-IN-CLASS TURNING RADIUS



**Chevy Kodiak
C4500/C5500**
35' Turn Diameter
54° Wheel Cut

Midsize Car

Ford
F-450/F-550* - 52'

Endura Exclusive Features & Benefits

**SOLID
HARDWOOD
CABINETRY**



**PREDRILLED
HARDWOOD
CONSTRUCTION**



**OPTIONAL HARD
ROCK MAPLE**

Our residential style cabinets are constructed of solid hardwood doors and fronts that are predrilled and screwed then they are stained and top coated with a furniture grade finish that provides long lasting beauty and durability as well as adding strength and quietness to your motorhome.

COMPETITOR'S CABINETRY

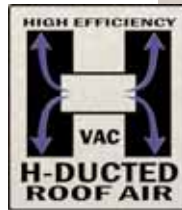


Other companies use wrapped cabinet fronts prone to peeling, fading and tearing. The softer composite wood used does not hold screws as well as hardwood resulting in loss of strength and squeaking. Discoloration will degrade the beauty and lower the value of the motorhome.

**GALVANIZED
STEEL
STORAGE
COMPARTMENTS**



Seamless, carpeted, galvanized steel storage compartments safely cradle your valuables. Rust protective paint and foam sealed for extended life and a quiet ride.



Dual metal H-Ducted air conditioning system with foil bubble wrapped insulation for superior climate control.



FLUSH FLOOR
Slide out rooms



Gulf Stream offers true flush floor slide out rooms to give you more headroom in the slide and eliminates the step up into the slide room that you will experience in many of our competitors motorhomes.

Excellent Weathering - Maintaining the vehicle's quality appearance enhances its resale value.

**Seamless
FIBERGLASS ROOF**
Kiln Resistant • Puncture Resistant

Tear Resistance - Flexroofs hard abuse resistant finish resists tearing, a condition that can cause leaks and lead to expensive repair.

Low Maintenance - Road grime can easily be removed with normal cleaning maintenance. Rubber chalking due to solar breakdown of the roof surface is eliminated, preserving the original appearance and resale value of the vehicle.

Stain Resistance - Fiberglass Flexroof is designed to resist staining and maintain its quality appearance.

Structural Integrity - Unlike conventional EPDM rubber roof membranes, Flexroof is a structural component of the roof system.

Textured Fiberglass - Helps dissipate heat and prevents tree limbs from tearing or scratching your roof.



Comfort Plus furniture by Gulf Stream Coach features residential styling, solid construction, total comfort and a comprehensive warranty.



The Endura has nearly 7' interior ceilings for a residential look and feel with 6 foot ceilings in the slideroom.

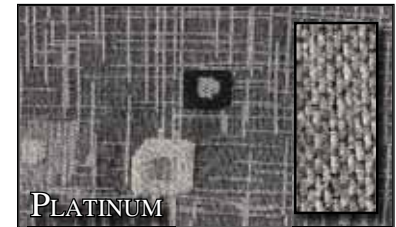
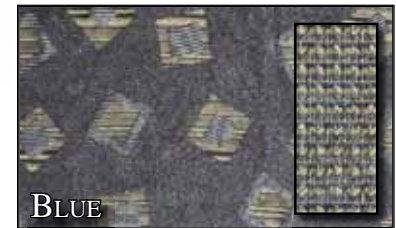
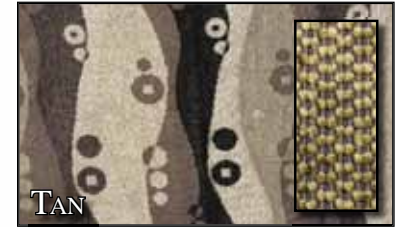
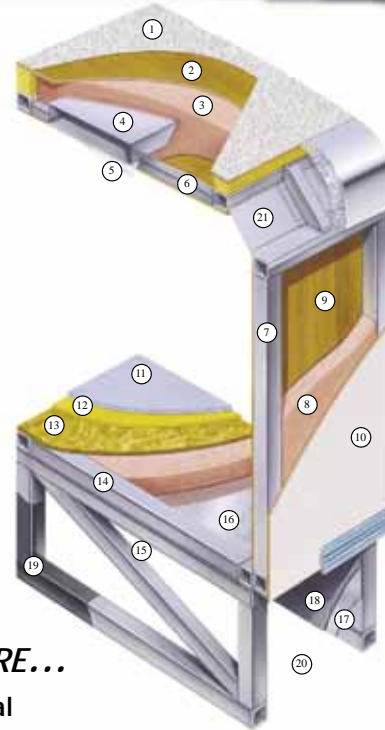
Cradle of Strength



1. Seamless Fiberglass Roof For Greater Energy Efficiency and Dependability.
2. Luan Decking for Additional Strength.
3. Molded, High Density EPS (Expanded Polystyrene) Roof Brick Insulation - Provided Consistent Insulation Value as well as Superior Dimensional Rigidity.
4. One-Piece Formed Aluminum Air Conditioning Duct, Completely Surrounded By EPS Insulation.
5. Bubble-Wrapped Foil Insulation Provides Superior Insulation and Helps Prevent Condensation.
6. Rugged Welded Tubular Aluminum Roof Framing.
7. Rugged Heavy-Gauge Tubular Aluminum, Fixture Welded to Form the Sidewall Framing.
8. High-Density EPS Insulation Provides Superior Lamination and Bonding Characteristics and Insures Greater Energy Efficiency.
9. Interior Wall Panels Securely Laminated to Sidewall Framing.
10. "Super Slick" Fiberglass Exterior Vacuum-bond Laminated to Sidewall Framing for Lasting Beauty and Durability.
11. High-Quality Stain-Resistant Carpeting Available in Designer Coordinated Colors.

Unlike traditional plywood and foam seating Comfort Plus dinette seating features the strength of steel and the comfort of a sprung cushion.

12. Extra-Thick Padding Under Carpet Provides Extra Comfort and Increases Carpet Durability.
13. Seamless Structure Wood Floor Decking Laminated to Steel Floor Structure Assures a Quiet, Long-Lasting Rigid Floor.
14. Heavy-Gauge Tubular Steel Framing, Fixture Welded for Extra Strength and Stability.
15. Heavy-gauge Tubular Steel Framed, Fixture Welded Floor Truss System Provides the Strongest Foundation in the Industry.
16. Seamless Layer of Galvanized Steel Securely Laminated to the Steel Floor Framing.
17. Galvanized Steel Used to Form Each Storage & Holding Compartment.
18. Durable All-Weather Carpeting Completes Each Accessible Storage Compartment, Providing Extra Protection for Luggage and Valuables.
19. Rust-Prohibitive Paint Coating Applied to All Steel Framing Assures Corrosion and Rust Protection.
20. The Industry's Strongest, Most Spacious Exterior Storage Compartments.
21. Reinforced Heavy-Gauge Steel "W" Transition.



TAKE THE TIME TO COMPARE...

and you will see the exceptional value of a Gulf Stream Coach

SUPER STRENGTH TRUSS SYSTEM



8" C CHANNEL EXTENSION

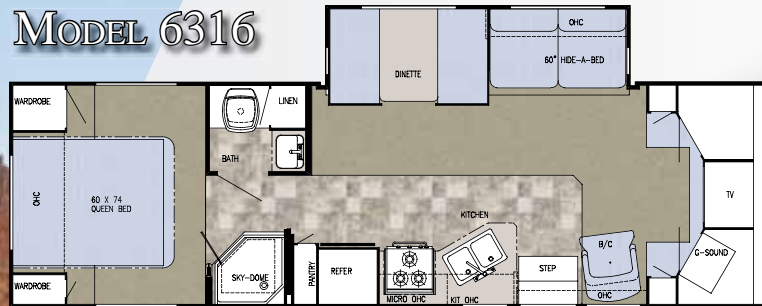


The Cradle of Strength super strength truss system is unmatched in the RV industry. The structural subfloor foundation begins by welding a network of integrated steel trusses to the chassis rail. Specifically designed to distribute and transfer the tremendous forces from the coach to the chassis rail these trusses are individually tested to withstand 6,000 pounds each.

When the chassis is stretched, Gulf Stream stands alone in the industry by using a full 8" C channel extension versus the traditional 4" or less. This practice adds to the strength of the foundation and offers peace of mind that towing is safe on an extension that is true to the chassis.

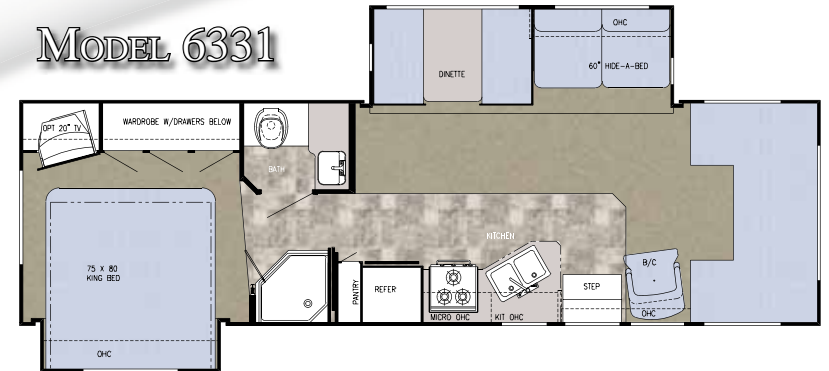
ENDURA

MODEL 6316



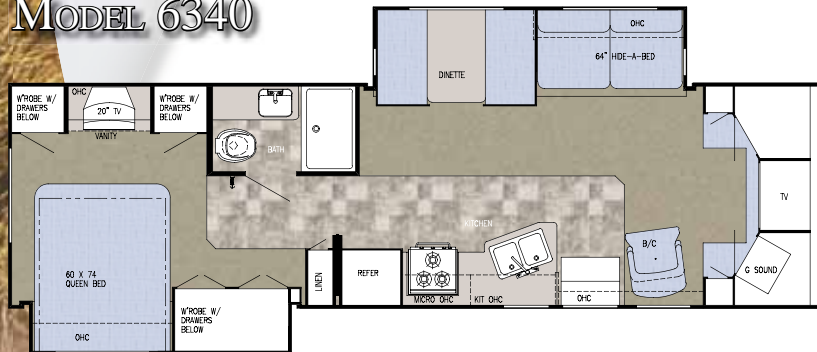
Chassis	Chevy Kodiak	Interior Height	83.375"
Engine	325 Hp. V 8	Black	52 gal.
Fuel	80	Grey	52 gal.
GVWR	19,500	Fresh	54 gal.
Wheelbase	213.5"	LP Gas Tank	64 lbs.
Length	32'-11"	Furnace (BTU's)	30,000
Height w/AC	11'-10.5"	Water Heater w/DSI	6 gal.
Width	101"	Ext Storage	153.4

MODEL 6331



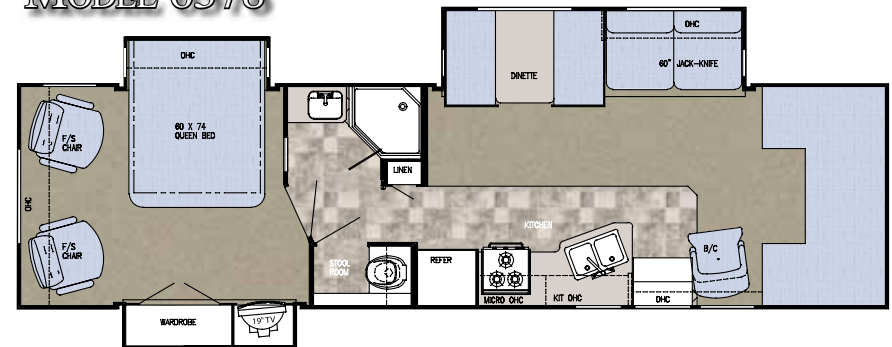
Chassis	Chevy Kodiak	Interior Height	83.375"
Engine	325 Hp. V-8	Black	52 gal.
Fuel	80	Grey	52 gal.
GVWR	19,500	Fresh	94 gal.
Wheelbase	225.5"	LP Gas Tank	64 lbs.
Length	34'-1"	Furnace (BTU's)	30,000
Height w/AC	11'-10.5"	Water Heater w/DSI	6 gal.
Width	101"	Ext Storage	70.8

MODEL 6340

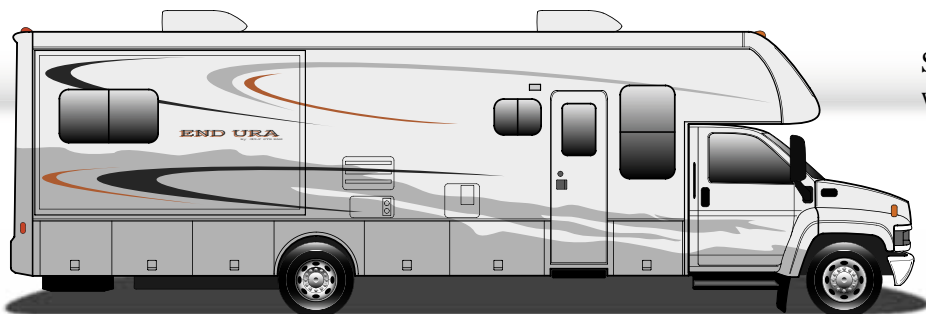


Chassis	Chevy Kodiak	Interior Height	83.375"
Engine	325 Hp. V 8	Black	52 gal.
Fuel	80	Grey	52 gal.
GVWR	19,500	Fresh	94 gal.
Wheelbase	239.5"	LP Gas Tank	64 lbs.
Length	35'-1"	Furnace (BTU's)	35,000
Height w/AC	11'-10.5"	Water Heater w/DSI	6 gal.
Width	101"	Ext Storage	99.5

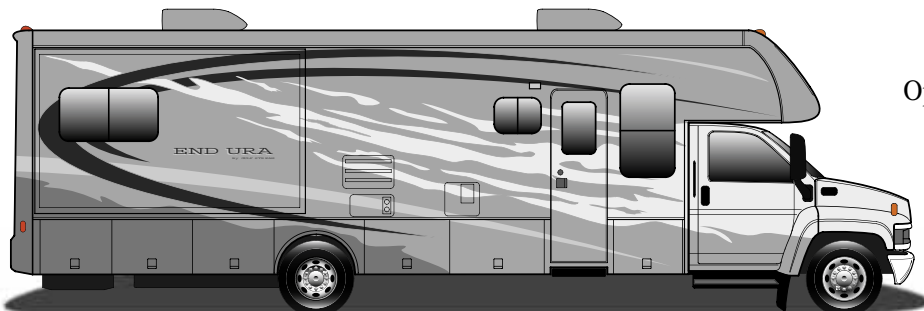
MODEL 6378



Chassis	Chevy Kodiak	Interior Height	83.375"
Engine	325 Hp. V 8	Black	52 gal.
Fuel	80	Grey	52 gal.
GVWR	22,000	Fresh	34 gal.
Wheelbase	263.5"	LP Gas Tank	64 lbs.
Length	36'-11"	Furnace (BTU's)	35,000
Height w/AC	11'-10.5"	Water Heater w/DSI	6 gal.
Width	101"	Ext Storage	71.6



Standard Paint
with Hi-Tech Vinyl Graphics



Optional Full Body Paint



Popular Options

- ENDURA PACKAGE (REQUIRED)
 - 7' INTERIOR HEIGHT
 - ONE-PIECE FIBERGLASS ROOF
 - SUPERSLICK FIBERGLASS W/BACKSIDE WALLS (NA 6378)
 - SUPERSLICK FIBERGLASS W/OBACKSIDE WALLS (6378)
 - EXTERIOR PAINTED GRAPHICS
 - BUS STYLE SLAM LATCH BAGGAGE DOORS
 - G SOUND
 - FLUSH FLOOR SLIDE
 - COMFORT PLUS BOOTH DINETTE
 - FULL ENTERTAINMENT CENTER
 - W/FLAT SCREEN COLOR TV & DVD PLAYER
 - AUTO ELECTRIC STEP
 - HITCH W/PLUG
 - OUTSIDE RINSE & WASH (NA 6316 6331)
- DIESEL PACKAGE (NA 6378)
 - 19,500 GVWR DURAMAX 6.6L DIESEL CHASSIS (213" WB)
 - STEEL WHEELS
 - ELECTRONIC EXHAUST BRAKE
 - 5.5 ONAN DIESEL GENERATOR
- DIESEL PACKAGE (6378)
 - 22,000 GVWR DURAMAX 6.6L DIESEL CHASSIS (239" WB)
 - STEEL WHEELS
 - ELECTRONIC EXHAUST BRAKE
 - 5.5 ONAN DIESEL GENERATOR
- HARDROCK MAPLE INTERIOR
- CARPET THROUGHOUT COACH
- ROLL GOODS THROUGHOUT
- UPGRADED OAK DASH
- VINYL CEILING LINER
- FRONT CABOVER WINDOW
- THERMOPANE WINDOWS
- STABIL-RIDE STABILIZER (REQUIRED)
- PAINT PACKAGE
- HEATED HOLDING TANKS
- 3-SPEED FANTASTIC ATTIC FAN (BR)
- SPARE TIRE (6331 6340)
- CABOVER BED W/LCD COLOR TV & DVD PLAYER
- LCD FLAT SCREEN TV W/REMOTE IN REAR BEDROOM (6378)
- FLAT SCREEN COLOR TV W/REMOTE (REAR BEDROOM) (6331 6340)
- FLUORESCENT LIGHT
- OUTSIDE ENTERTAINMENT CENTER
- PHONE JACK
- DSS PRE-WIRE
- BACK-UP MONITOR
- 5.5 ONAN GAS GENERATOR (NA W/DIESEL PACKAGE)
- 6-WAY OPTIMA DRIVER/PASSENGER SEATS
- SOFT TOUCH OPTIMA H-A-B SOFA IPO CLOTH
- SOFA FOOT REST
- FREE STAND DINETTE W/2 CHAIRS
- 2 ADDITIONAL FOLDING CHAIRS
- EURO RECLINER IPO BARREL CHAIR (NA IN PLATINUM OR BLUE DECOR)
- 2-WAY DOUBLE DOOR REFER

Chassis

- 19,500 GVWR CHEVY, KODIAK V8 ENGINE, 80 GAL FUEL TANK W/ POWERLOCKS & WINDOWS (NA 6378)
- 22,000 GVWR CHEVY, KODIAK V8 ENGINE, 80 GAL FUEL TANK W/ POWERLOCKS & WINDOWS (6378)

Structural

- WELDED ALUMINUM PERIMETER FRAME
- LAMINATED 3/8" STRUCTURE BOARD STEEL FLOOR FRAME (NA 6378)
- LAMINATED 3/8" PLYWOOD STEEL FRAME FLOOR (6378)
- FIBERGLASS FRONT CAP
- SLIDE OUT ROOM (BOOTH DIN, SOFA)
- SLIDE OUT ROOM (KING BED) (6331)
- SLIDE OUT ROOM (BED/WARDROBE) (6340)
- SLIDE OUT ROOM (BED) (6378)
- SLIDE OUT ROOM (WARDROBE W/ FLAT PANEL CABINET DOORS) (6378)
- ALUMINUM SKIN ON REAR WALL & CABOVER BUNK (6378)
- FIBERGLASS SKIN ON REAR WALL & CABOVER BUNK (NA 6378)

Exterior

- RADIUS TINTED WINDOWS
- LIGHTED TRUNK BOXES
- REAR MUD FLAPS
- UNDER CHASSIS SPARE TIRE CARRIER (6331 6340)
- LADDER (NA 6316)

- ROLL OUT AWWNING (SIZE VARIES)
- SLIDE OUT TOPPER (6316)
- (2) SLIDE OUT TOPPERS (6331 6340)
- (3) SLIDE OUT TOPPERS (6378)
- STAINLESS STEEL WHEEL INSERTS
- HEATED & REMOTE EXTERIOR SIDEVIEW MIRRORS
- FOAM SEAL & UNDERCOATING
- DEAD BOLT LOCK ENTRY DOOR
- ACRYLIC ENTRY DOOR ASSIST BAR
- LEVELING JACKS

Décor

- CARPETED CEILING LINER
- HARDWOOD TILE CABINET FRONTS
- VINYL CARPET RUNNER
- DECORATOR CLOCK
- ROLL GOODS IN KITCHEN, BATH, & HALL; CARPET OTHER AREAS
- SHADES THROUGHOUT
- DECORATOR MIRROR
- SINK COVERS
- STOVE TOP COVERS

Power

- AUXILIARY BATTERIES
- 50 AMP SERVICE W/AUTO CHANGEOVER & CONVERTER
- GENERATOR PREP
- BATTERY DISCONNECT

Heating & Cooling

- DASH AC

- 13,500 BTU LOW PROFILE DUCTED AC (FRONT)
- 11,000 BTU LOW PROFILE DUCTED AC (BEDROOM)
- 30,000 BTU FURNACE (6316)
- 35,000 BTU FURNACE (NA 6316)

Bath

- 40 GAL FRESH WATER TANK (6378)
- DELUXE STOOL
- SKYDOME
- POWER BATH VENT
- CORNER SHOWER W/SURROUND (NA 6340)
- NEO-ANGLE SHOWER DOOR (NA 6340)

Electrical

- EMERGENCY START SWITCH
- JENSEN FOLD DOWN TV TRAY (6316)
- TV ANTENNA WITH AMP & BOOST
- MONITOR PANEL
- GENERATOR SWITCH & HOUR METER
- TV JACK IN BEDROOM
- CABLE TV READY
- CEILING LIGHT WALL SWITCH
- CD PLAYER

Furnishings

- QUEEN BED W/ LIFTS, INNERSPRING MATTRESS, BEDSPREAD & PILLOWS (NA 6331)

- KING BED W/LIFTS, INNERSPRING MATTRESS, BEDSPREAD & PILLOWS (6331)
- COMFORT PLUS DINETTE BOOTH BED
- 2 WAY DRIVER PASSENGER SEATS
- SINGLE BARREL CHAIR
- H-A-B SOFA
- PLEATED PRIVACY DOOR
- INSIDE HANDRAIL
- (2) FREE STANDING BEDROOM CHAIRS (6378)

Appliances

- CONVECTION MICROWAVE
- W/3-BURNER TOP
- 6 GALELECTRONIC IGNITION WATER HEATER W/BY-PASS VALVE
- SM. 2-WAY DBL DOOR REFER (#2652)
- LP GAS TANK
- CARBON MONOXIDE DETECTOR
- LP LEAK DETECTOR

Coach-Net®

24 HR. EMERGENCY ROADSIDE ASSISTANCE

- One Year Coach-Net Membership
- Towing and Winching
- Delivery of emergency Fluids
- Flat Tire Change
- Jump-Start / Battery Boost
- Mobile Mechanic
- Lockout



GULF STREAM FACILITIES...

Located in the heart of the Amish country, the complex, along with Gulf Stream's affiliate, Fairmont Homes, Inc., covers over 400 acres and includes more than 1.5 million square feet of state-of-the-art manufacturing facilities. With over 20 years of manufacturing experience producing quality Recreational Vehicles, Gulf Stream is the leading manufacturer of high quality and high value RV products that are distributed through a partnership relation with independent dealers who are focused on meeting customer expectations.

EXCEPTIONAL VALUE...

Your family and friends will feel safe and comfortable wrapped in Gulf Stream's "Cradle of Strength". Comfort, Quietness and Insulation from the elements is what you will experience from Gulf Stream's "Tried and Tested" Motorhomes. Compare... and you will find the exceptional value of a Gulf Stream Motorhome.



Quality, Innovation, Value



Insurance options. Both are available at competitive rates with friendly, reliable service. The 10% discount program at campgrounds throughout the U.S. and Canada. As a member, you'll receive discounts at National Theme Parks and special attractions, including RV and travel guides, directories and magazines.

Gulf Streamers spend time touring attractions, enjoying fabulous meals, taking in area highlights and shows to help make the most out of your RV experience. Special rallies throughout the year include Gulf Stream supplier seminars, complimentary minor repairs by Gulf Stream technicians, Gulf Stream dealer product displays and round table discussions to voice your product improvement ideas.

The Gulf Streamers RV Club is a valuable benefit to all Gulf Stream owners. Members enjoy staying active and participating in the various rallies and caravans offered throughout the United States and Canada. The Main Stream, the club Magazine, with up-to-date product information, service tips and company highlights. Members benefit from the Emergency Road Service and Gulf Streamers

POST OFFICE BOX 1005

• YOUR GULF STREAM COACH DEALER •

NAPPANEE, IN 46550



VISIT

WWW.GULFSTREAMRV.COM

FOR MORE DETAILED INFORMATION...
OR CALL 1-800-765-8787-EXT. 3288

For more information and available options, contact your local Gulf Stream dealer, www.gulfstreamRV.com or Gulf Stream Coach, Inc. Gulf Stream Coach, Inc., reserves the right to make changes in prices, colors, materials, components and specifications and to discontinue models at any time without notice or obligation. Gulf Stream Coach, Inc., assumes no responsibility for any error in type or print reproduction of specifications or floorplans in this brochure. Photographs may show equipment or items that are optional and are not included in the purchase price of the coach. Test drive and review a current model at your nearest Gulf Stream dealer. © 2002 Gulf Stream Coach, Inc., Nappanee, Indiana U.S.A.