

TRAVEL TRAILERS & FIFTH WHEELS

# SPRINTER



CAN'T COMPETE WITH  
**THE ORIGINAL**



19 YEARS AND STILL GOING STRONG



CAMPING MADE EASY | [WWW.KEYSTONERV.COM/SPRINTER-WIDE-BODY](http://WWW.KEYSTONERV.COM/SPRINTER-WIDE-BODY)



When Cole Davis founded Keystone RV in 1996 his vision was clear: Build a quality RV loaded with features priced thousands less than other RVs on the market. To accomplish his goal, Cole would recruit and build a strong team, focus on keeping overhead low, and empower the people closest to the customer to make decisions. Within a few short months after opening the doors, Keystone produced its very first camper—the wood framed, aluminum-skinned Sprinter. Delivering big on quality, features and value, the public fell in love with Sprinter and a star was born.

As customers appetite skyrocketed, new Keystone models were added to satisfy growing customer demand. Along with this tremendous growth came the need for expanded production. To meet this need, more manufacturing plants were built and staffed. By the beginning of 2000, Keystone was leading the industry in fifth wheel and trailer sales. Today, Keystone RV Company has grown to encompass over 1 million square feet of manufacturing space with facilities in Goshen, Indiana and Pendleton, Oregon. While Keystone is no longer the small “start up” we once were, our mission has remained true to Cole’s vision—“Do the job right and make sure we deliver a quality product every time.”



**Keystone RV  
Company**

# 19 Years | AND STILL GOING STRONG



## OUR STORY.

Sprinter was Introduced in 1996 as Keystone's first product line. Sprinter's goals remain simple; take the suggestions from our customers and make them the foundation for the Sprinter design. This philosophy has led to our slogan "Camping Made Easy" and has been the reason for our success for 19 years. Let us show you how Sprinter offers a new level of affordable luxury.



TRAVEL TRAILERS: PGS. 6-11



FIFTH WHEELS: PGS. 12-17



CAMPFIRE EDITION: PGS. 18-23



# MAKE CAMPING EASY.

Sprinter offers you its proudest distinction between other brands. A product designed to enhance your experience and **MAKE CAMPING EASY!**

## EXTERIOR

1. G2 POWER STABILIZER JACKS
2. LED AWNING W/LED LIGHTS AND SPEAKERS
3. TOYLOK
4. 30" FRICTION HINGE DOOR
5. FOLD OUT TABLE IN PASS THROUGH
6. POWER TONGUE JACK (TT ONLY)
7. BATTERY DISCONNECT
8. LIGHT AT TERMINATION POINTS

## INTERIOR

1. 40" HDTV
2. SOUNDBAR ENTERTAINMENT SYSTEM
3. LED LIGHTING IN ALL ROOMS
4. 22" DEEP DRAWERS
5. LED FLOOR LIGHTS
6. 6 PERSON 48" DINETTE (EXCLUDES 289, 316, 319, 322, 298, 343, 334)
7. 60"X80" QUEEN MATTRESS
8. MULTIMEDIA CHARGING STATION (MOST MODELS)

## KEY CME FEATURES



(EXCLUDES CAMPFIRE EDITION)

## EXTERIOR



1. 62 POWER STABILIZER JACKS



2. ELECTRIC AWNING W/LED LIGHTS AND SPEAKERS



3. TOYLOK



4. 30" FRICTION HINGE DOOR



5. FOLD OUT TABLE IN PASS THROUGH



6. POWER TONGUE JACK (TT ONLY)



7. BATTERY DISCONNECT



8. LIGHT AT TERMINATION POINTS

## INTERIOR



1. 40" HD TV



2. SOUNDBAR ENTERTAINMENT SYSTEM



3. LED LIGHTING IN ALL ROOMS



4. 22" DEEP DRAWERS



5. LED FLOOR LIGHTS



6. 6 PERSON 48" DINETTE (EXCLUDES 316, 322, 298, 343, 289, 319, 334)



7. 60"X80" QUEEN MATTRESS



8. MULTIMEDIA CHARGING STATION (MOST MODELS)

# FEELS LIKE HOME, SO RELAX, WE MAKE IT EASY.

At Sprinter we understand that finding the time to relax is often hard to do. So for the time you find to slow down and enjoy North America's beauty, we want you to be able to enjoy every minute of it. Take a look at a Sprinter today and let us show you, how we "MAKE CAMPING EASY".





313BHS  
SHOWN IN ALDER DECOR



← ALL NEW BED BOX WITH LED LIGHTING  
& POWER RECEPTACLES ON BOTH SIDES

↑ REAR TO FRONT VIEW OF 313BHS WITH  
18 CU. FT. RESIDENTIAL REFRIGERATOR

CAMPING MADE EASY | [WWW.KEYSTONERV.COM/SPRINTER-WIDE-BODY](http://WWW.KEYSTONERV.COM/SPRINTER-WIDE-BODY)



295RKS



316BIK



299RET



319MKS



313BHS



322BHS

MODEL	295RKS	299RET	313BHS	316BIK	319MKS	322BHS	370FLS
SHIPPING WEIGHT	7824	8332	8168	8589	8120	8546	8536
CARRYING CAPACITY	2476	2518	1834	2631	2980	2524	2664
HITCH WEIGHT	1145	1070	950	1060	940	910	1115
EXTERIOR LENGTH*	35' 9"	37'	35' 8"	36' 8"	34' 11"	37' 5"	40'
EXTERIOR HEIGHT	11' 1"	11' 3"	11' 1"	11' 3"	11' 3"	11' 3"	11' 3"
FRESH WATER	81	81	81	81	81	81	87
WASTE WATER	32	32	32	32	32	64	32
GRAY WATER	64	96	64	64	64	94	95
LPG CAPACITY LB.	60	60	60	60	60	60	60



SCAN ME

FOR MORE INFORMATION SEE SPRINTER TRAVEL TRAILERS AND Fifth Wheel 2 ALONG WITH OTHER RECREATION CONTENT



370FLS



# ALL NEW FEATURES



PRINTED FRONT CAP



40" HDTV



SOUNDBAR ENT. SYSTEM



60" X 80" RESIDENTIAL BEDS



30" ENTRY DOORS



22" DEEP DRAWERS



42" SLIDEOUTS  
(EXCEPT 316, 322, 319)



SPLIT BOWL SINK



48" 6 PERSON DINETTE  
(EXCEPT 316, 322, 319)



LED LIGHTING IN ALL ROOMS



CHARGING STATIONS



62 ELECTRIC STABILIZER JACKS

Our decors form the foundation for Sprinters carefully coordinated interiors. Modern upholstery, drapery, fabrics, hardware, fashionable window treatments, walls & countertops in the latest colors and materials.



CONNECT WITH KEYSTONE RV AND STAY UP TO DATE WITH PRODUCT NEWS AND INFORMATION



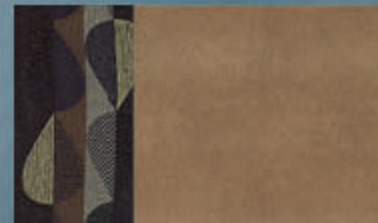
VISIT OUR WEBSITE TO VIEW INTERIOR PHOTOS, 360 VIRTUAL TOURS AND MUCH MORE.



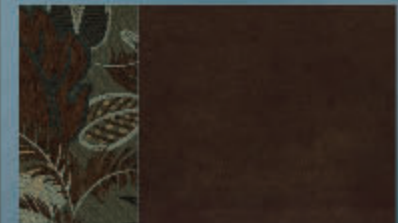
## ALDER

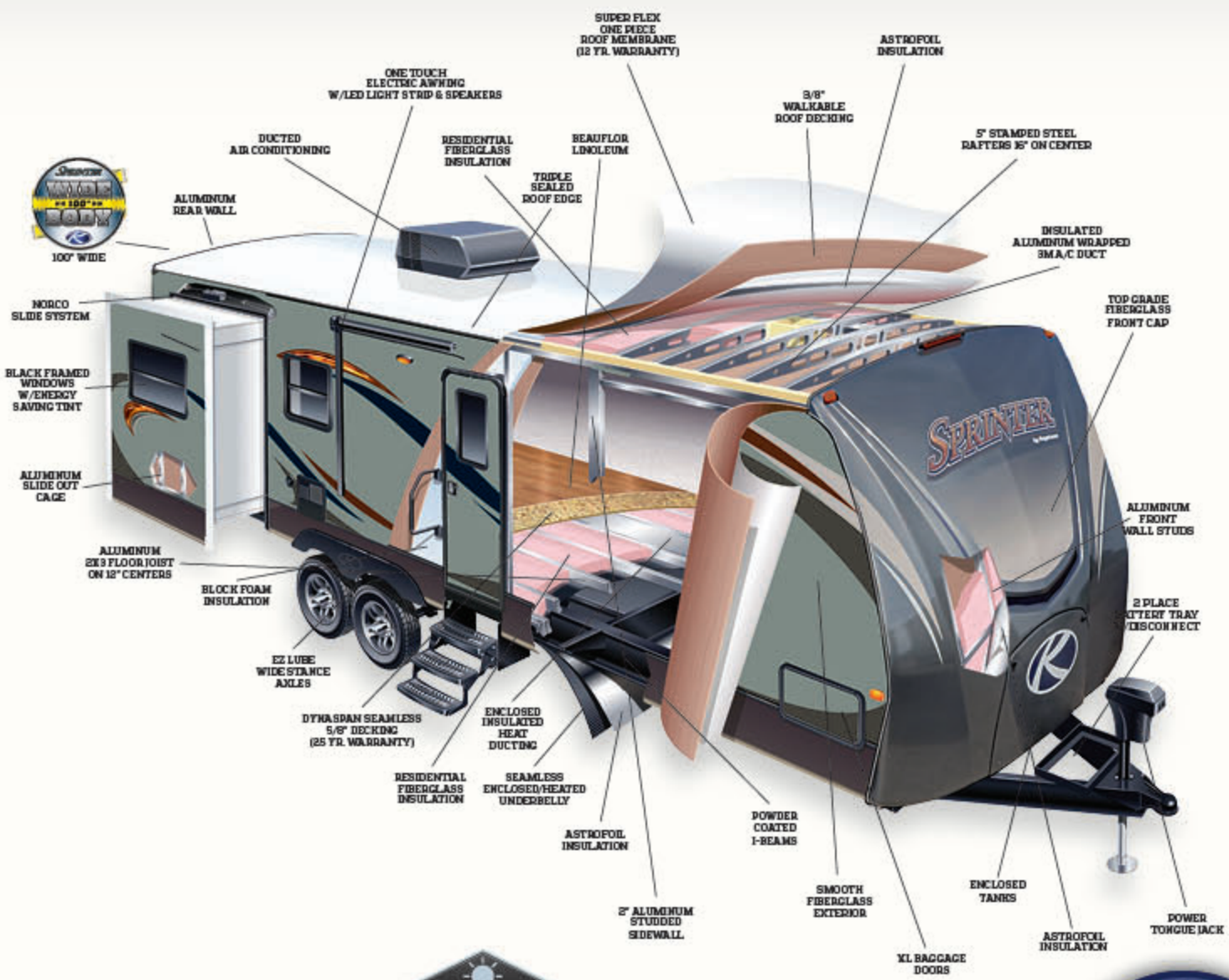


## PEPPERCORN



## SLATE GRAY





**OUTDOOR KITCHEN**



↑ NOT AVAILABLE ON ALL MODELS



- AN UPGRADED INSULATION PACKAGE THAT WAS INDEPENDENTLY TESTED TO PERFORM AT 0-DEGREES AND 100-DEGREES.
- SPACE AGE ASTROFOIL TECHNOLOGY
- STANDARD ON ALL TRAVEL TRAILERS AND FIFTH WHEELS (EXCLUDES CAMPFIRE EDITION)
- R-9 WALLS, R-28 ROOF, R-30 FLOOR, R-20 FRONT WALL



PRINTED FRONT CAP WITH EXCLUSIVE KEY-SHIELD PAINT TECHNOLOGY

## EXTERIOR FEATURES

- » All aluminum construction
- » Industry best, 100" Wide body construction
- » Performance Insulation Package w/ Astrofoil layer in the subfloor, roof, slideout floors, front wall, (R30 floor; R28 roof; R18 slideout floor; R20 front wall)
- » 80-32-64 tank sizes
- » 100" wide-stance axles
- » Generation 2 power stabilizer jacks **NEW**
- » 30" friction hinge entry door **NEW**
- » Electric awning with Auto-Dump, friction-hinge adjustment, LED light strip, manual override, and speakers
- » Backed for rear ladder
- » 2 Battery tray with battery disconnect
- » Splash guard under slide
- » Laminated aluminum framed sidewalls
- » Enclosed underbelly with direct vent heat
- » E-Z Lube axles
- » Next Generation Fiberglass Front Cap w/ enclosed LP tank storage
- » Tinted safety glass windows
- » Lockable baggage doors
- » Rear bumper storage w/ end caps
- » 9" easy opening triple entry step
- » Entry step light
- » XL entry door grab handle
- » Tough Guard painted skirt metal
- » 4" extra long rain spouts
- » Two 30lb. LP bottles with auto change-over regulator
- » Roto-cast seamless holding tanks
- » Black tank flush system
- » Outside shower
- » 30 Amp power cord (50 amp detachable cord w/ selected 50 amp service option)
- » Cable and satellite hook-up
- » Aluminum wheels
- » Spare tire
- » Light at the termination points
- » Outside TV bracket with 110 recep, and cable hookups
- » Picnic table in pass through
- » Toylok Security System
- » Outside kitchen models include: two burner cook-top, bumper mounted grill w/LP gas connection, 4.3 cu ft 110v fridge, and sink.

## INTERIOR FEATURES

- » Full 96" interior width (Added square footage)
- » 5/8" water resistant Dynaspan flooring with 25 year full, and limited lifetime warranty
- » Washer/Dryer prep (299RET, 319MKS, 370FLS models)
- » 80" Interior Height
- » Best in class 42" deep slideouts (Except 316, 319, and 322) **NEW**
- » Best in class 48" deep dinettes (Except 316, 319, and 322) **NEW**
- » 12 Volt, 55 amp converter
- » 35,000 BTU auto-ignition furnace
- » 13,500 BTU ducted air conditioner with "Quick Cool" (15k option)
- » Windows in both Slide-room end walls (N/A in bedroom

slide-room on TT)

- » Water heater bypass for easy winterization
- » Digital Thermostat
- » Residential cabinet hardware
- » Large picture window at the dinette
- » Overhead slide room cabinets
- » Interior access, manual override for the slide rooms
- » In-floor hard-ducted heat
- » LED floor lighting
- » LED overhead lighting in every room **NEW**
- » Central Command Center for monitoring all tanks and battery, awning, slide-outs, lights, etc.
- » Screwed cabinetry with lumber-core stiles
- » Beauflor Linoleum w/ 7 year warranty (2 year cold crack)
- » Wired & framed for 2nd A/C (With 50 amp option)

## LIVING ROOM FEATURES

- » Best in class 42" deep slideouts (Except 316, 319, and 322) **NEW**
- » Best in class 48" deep dinettes (Except 316, 319, and 322) **NEW**
- » Sound bar entertainment system with Bluetooth technology, USB ports, and Blue Ray/DVD inputs **NEW**
- » 40" HD LED TV **NEW**
- » Cable TV hook-up with antenna and signal booster
- » Door access to storage under booth dinettes
- » Satellite prep with RG-6 cable
- » High grade carpeting
- » Residential fabric-covered valance w/removable drapes
- » Overhead storage in the slide room
- » Tri-fold sleeper sofa w/storage

## BATH FEATURES

- » Large vanity sink
- » Porcelain foot flush toilet
- » Residential medicine cabinet with mirror
- » ABS one piece tub surround
- » Neo angle glass shower (non-bunks)
- » Skylight over tub/shower
- » Reinforced tub support
- » Power roof vent fan
- » GFI receptacles in the bathroom
- » Illuminated light switch

## KITCHEN FEATURES

- » Crown Molding cabinetry
- » 6 gallon gas/electric DSI auto ignition water heater w/ 16.2 gph recovery (12 gallon in 370FLS)
- » 3 burner high output gas range
- » Large split bowl sink with cover **NEW**
- » 22" deep drawers **NEW**
- » Full extension ball bearing metal drawer guides
- » Metal pull-down sprayer faucet
- » Waste basket storage
- » Lighted range hood with exhaust fan
- » Microwave with carousel
- » 17" oven

- » 7 - 8 cu ft, double door, gas/electric fridge (Except 313, 370 and 295) **NEW**
- » 18 cu ft Samsung stainless steel, French-door, 110 fridge w/ 1000 watt independent inverter & battery disconnect. (Equipped with ice maker, but not plumbed from manufacturer) (Standard in 313, 370 and 295) **NEW**
- » Raised panel cabinet door uppers
- » Overhead cabinets above the sink

## BEDROOM FEATURES

- » Full, residential 60"x80" Dream Collection bed **NEW**
- » High grade carpet in master bedroom
- » Under bed storage w/ gas struts
- » Color matched bedspread
- » LED reading lights
- » Electrical outlet, and multi media charging station near bed
- » Roof vent

## SAFETY FEATURES

- » Dual hitch safety chains
- » Safety glass windows
- » Fire extinguisher
- » Smoke detector
- » Carbon monoxide detector
- » Egress windows
- » LP gas leak detector
- » Break away safety brake
- » 4 wheel electric brakes

## POPULAR OPTIONS

- » Upgraded 15,000 BTU AC
- » Free-standing residential dinette with four chairs
- » 50 AMP electrical service w/detachable cord, and 2nd AC prep
- » Recliners IPO swivel rocking chairs
- » Dual pane windows
- » 2nd A/C (13.5k)



- CAMPING MADE EASY PACKAGE

\*STANDARDS AND OPTIONS ARE SUBJECT TO CHANGE WITHOUT NOTICE



298FWRLS  
SHOWN IN PEPPERCORN DECOR

↑ FRONT TO REAR VIEW OF 298FWRLS WITH  
18 CU. FT. RESIDENTIAL REFRIGERATOR

# LUXURY YOU'LL LOVE, VALUE YOU CAN APPRECIATE.

Built upon the foundation of Keystone's first product line, Sprinter fifth wheels "Makes Camping Easy" by combining luxury and value in one beautiful fifth wheel.



324FWBHS  
SHOWN IN SLATE GRAY DECOR



293FWBHS  
SHOWN IN SLATE GRAY DECOR



293FWBHS  
SHOWN IN SLATE GRAY DECOR



252FWRLS



269FWRLS



289FWMLS



293FWBHS



298FWRLS



304FWRKS



324FWBHS



326FWBHS



334FWFLS



343FWBHS

MODEL	252FWRLS	269FWRLS	289FWMLS	293FWBS	298FWRLS	304FWRKS	324FWBHS	326FWBHS	334FWFLS	343FWBHS
SHIPPING WEIGHT	7891	8915	9455	9903	9852	9099	10580	10634	9929	10951
CARRYING CAPACITY	2609	2685	2660	2797	2608	3066	3440	3366	3571	2849
HITCH WEIGHT	1395	1585	1955	1980	2100	2005	2055	2140	1795	2135
EXTERIOR LENGTH*	30' 3"	32' 7"	33' 9"	35'	34' 7"	33' 11"	38' 10"	38' 10"	37' 4"	39' 4"
EXTERIOR HEIGHT	12' 6"	12' 6"	12' 6"	12' 6"	12' 6"	12' 6"	12' 8"	12' 8"	12' 6"	12' 6"
FRESH WATER	81	87	87	87	87	87	87	87	87	87
WASTE WATER	40	40	40	72	40	40	40	40	40	93
GRAY WATER	80	80	80	120	80	80	120	120	72	80
LPG CAPACITY LB.	60	60	60	60	60	60	60	60	60	60

DISCLAIMER: Product information is as accurate as possible as of the date of publication of this brochure. All features, floor plans, and specifications in this brochure are subject to change without notice. Please also consult Keystone's web site at [www.keystonerv.com](http://www.keystonerv.com) for more current product information and specifications. Tow Vehicle Disclaimer. CAUTION: Owners of Keystone recreational vehicles are solely responsible for the selection and proper use of tow vehicles. All customers should consult with a motor vehicle manufacturer or their dealer concerning the purchase and use of suitable tow vehicles for Keystone products. Keystone disclaims any liability or damages suffered as a result of the selection, operation, use or misuse of a tow vehicle. KEYSTONE'S LIMITED WARRANTY DOES NOT COVER DAMAGE TO THE RECREATIONAL VEHICLE OR THE TOW VEHICLE AS A RESULT OF THE SELECTION, OPERATION, USE OR MISUSE OF THE TOW VEHICLE. 02/15

# ALL NEW FEATURES



PAINTED FRONT CAP



40" HD TV



SOUNDBAR ENT. SYSTEM



60" X 80" RESIDENTIAL BEDS



30" ENTRY DOORS



22" DEEP DRAWERS



42" SLIDEOUTS (EXCEPT 289, 343, 298, 334)



SPLIT BOWL SINK



48" 6 PERSON DINETTE (EXCEPT 289, 343, 298, 334)



LED LIGHTING IN ALL ROOMS



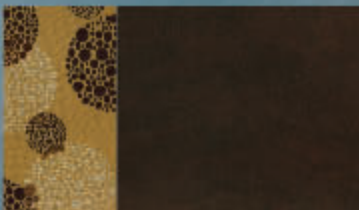
CHARGING STATIONS



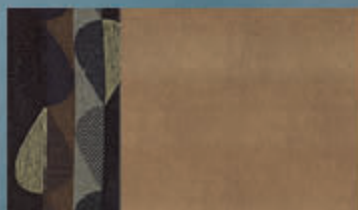
62 ELECTRIC STABILIZER JACKS



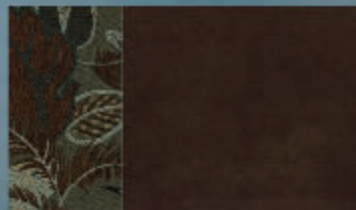
ALDER



PEPPERCORN



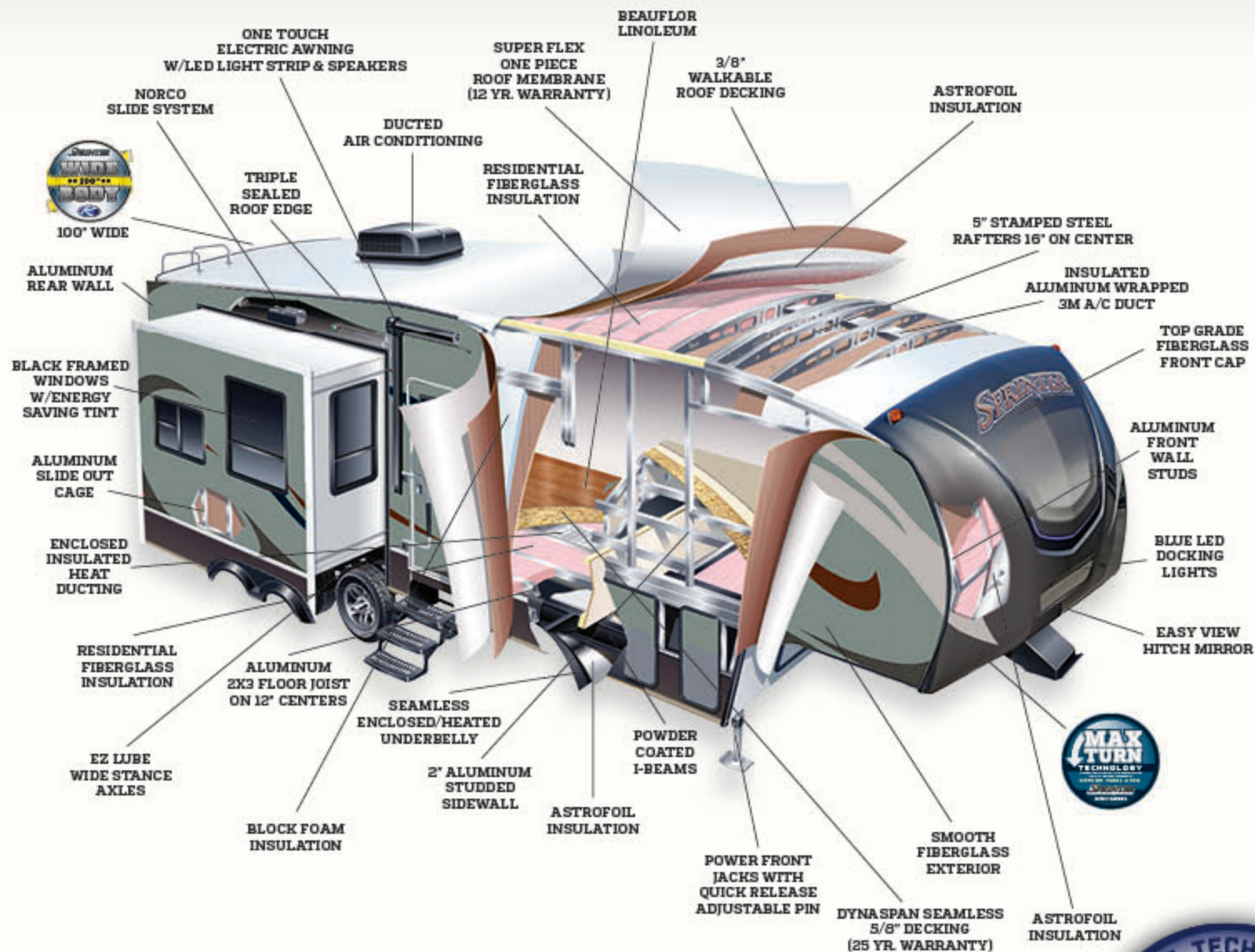
SLATE GRAY



**BUY LOCALLY**  
PURCHASING YOUR RV LOCALLY



It's up to you where you purchase your new Sprinter, but may we suggest your local dealer? Not only does it help your local economy and provide jobs, but it will also give you an opportunity to develop a service relationship with someone that will come to know you and your coach. Congratulations on finding the best built, best equipped and best value in the industry. Happy travels!



- AN UPGRADED INSULATION PACKAGE THAT WAS INDEPENDENTLY TESTED TO PERFORM AT 0-DEGREES AND 100-DEGREES.
- SPACE AGE ASTROFOIL TECHNOLOGY STANDARD ON ALL TRAVEL TRAILERS AND FIFTH WHEELS (EXCLUDES CAMPFIRE EDITION)
- R-9 WALLS, R-28 ROOF, R-30 FLOOR R-20 FRONT WALL



- 30% MORE TURNING RADIUS
- UTILIZING THE LATEST TECHNOLOGY TO CREATE AN INCREASE IN TURNING RADIUS



PRINTED FRONT CAP WITH EXCLUSIVE KEY-SHIELD PAINT TECHNOLOGY



## EXTERIOR FEATURES

- » All aluminum construction
- » 100" wide body construction
- » Performance Insulation Package w/ Astrofoil layer in the subfloor, roof, slideout floors, front wall, R30 floor, R28 roof, R18 slideout floor; R20 front wall
- » 80-40-80 tank sizes
- » 60lb LP storage w/ auto change over regulator & 30 lb on board storage compartment
- » Slam latch baggage doors
- » Painted MaxTurn radius fiberglass front cap w/ blue LED lighting **NEW**
- » 100" wide stance axles
- » Electric awning with Auto-Dump, friction hinge adjustment, LED light strip, manual override, and speakers
- » Docking station - (water, cable, shower, black tank flush)
- » Rear ladder
- » Splash guard under slide
- » G4 cable slide out systems with 4 points of seal
- » Heated pass through compartment
- » Best In Class, 2" Laminated aluminum framed sidewalls
- » Enclosed underbelly with direct vent heat
- » E-Z Lube axles
- » Tinted safety glass windows
- » Power landing gear
- » Gen 2 power stabilizer jacks **NEW**
- » 30" friction-hinge entry door
- » Rear bumper storage w/ end caps
- » 9" easy opening triple entry steps
- » Entry step light
- » Battery disconnect
- » XL entry door grab handle
- » Tough guard painted skirt metal
- » 4" extra long rain spouts
- » Roto-cast seamless holding tanks
- » Black tank flush system
- » 50 Amp detachable power cord 30' (except 252)
- » Cable and satellite hook-up
- » Outside TV bracket with 110 recep, and cable hookups
- » Aluminum wheels
- » Spare tire
- » Light at the termination points
- » Picnic Table in pass-through compartment
- » Toylok Security System
- » Outside kitchen models include: two burner cook-top, bumper mounted grill w/LP gas connection, 4.3 cu ft 110v fridge, and sink.

## INTERIOR FEATURES

- » 6' 3" Slide room height
- » 12 Volt, 55 amp converter
- » 35,000 BTU auto-ignition furnace
- » 15k BTU ducted air conditioner with "Quick Cool"
- » 96" wide-body interior width, best in class!
- » 50 AMP electrical service (Except 252)
- » 5/8" water resistant Dynaspan flooring with 25 year full, and limited lifetime warranty
- » Water heater bypass for easy winterization
- » Digital Thermostat

- » XL picture window at the dinette
- » Industry leading, 42" deep slide outs (Except 289, 298, and 334, 343)
- » Industry leading 48" dinettes (Except 289, 298, and 334, 343)
- » Industry best, in-floor ducted heat
- » LED floor lighting
- » LED overhead lighting in every room **NEW**
- » Central Command Center for monitoring all tanks and battery, awning, slide-outs, lights, etc.
- » Industry best, 22" deep drawers with full extension ball bearing drawer guides
- » Screwed cabinetry with lumber-core stiles
- » Beauflor linoleum with 7 year warranty (2 year cold crack)
- » Interior access, manual override for the slide rooms
- » Washer/Dryer prep (324, and 326 floorplans)
- » Wired & framed for 2nd A/C (Except 252)

## LIVING ROOM FEATURES

- » 6' 3" Slide room height
- » Fireplace (Except 252)
- » Ceiling fan (Except 252)
- » Pin-up light by sofa
- » Cable TV hook-up with antenna and signal booster
- » Satellite prep with RG-6 cable
- » Residential fabric-covered valances w/removable drapes
- » Tri-fold sleeper sofa w/storage
- » 40" HD LED TV
- » Sound bar entertainment system with Bluetooth technology, USB ports, and Blue Ray/DVD inputs

## BATH FEATURES

- » 30"x48" Residential shower w/seat (Except 252, and 334, 293)
- » Floor to ceiling linen closet (Except 252, and 334, 343)
- » Large vanity sink
- » Porcelain foot flush toilet
- » Residential medicine cabinet with mirror
- » Skylight over tub/shower
- » Reinforced tub support
- » Power roof vent fan
- » GFI receptacles in the bathroom
- » Illuminated light switch in Bathroom

## KITCHEN FEATURES

- » All hardwood doors and drawer fronts
- » Crown molding on cabinetry
- » 8 Cu. Ft. double-door refer (Except 298, 304, 326)
- » 12 gallon gas/electric DSI auto ignition water heater w/ 16.2 gph recovery (Except 252)
- » 3 burner high output gas range
- » Split bowl sink **NEW**
- » 22" deep drawers **NEW**
- » Full extension ball bearing metal drawer guides
- » Pull-down sprayer faucet
- » Waste basket storage
- » Lighted range hood with exhaust fan
- » Microwave with carousel
- » 17" oven

- » 18 cu ft Samsung stainless steel, French-door, 110 fridge w/ 1000 watt independent inverter & battery disconnect (Standard in 298, 304, and 326) **NEW**
- » Raised panel cabinet door upper and lower
- » Overhead cabinets above the sink
- » Oversized 22" deep pots and pan drawer

## BEDROOM FEATURES

- » Full, residential 60"x80" Dream Collection bed **NEW**
- » Flush floor bathroom/bedroom suites (No bedside step-up)
- » Cable TV hook-up with 110 outlet
- » High grade carpet in master bedroom
- » Under bed storage w/ gas struts
- » Color matched bedspread
- » LED reading lights
- » Electrical outlet, and multi media charging station near bed

## SAFETY FEATURES

- » Safety glass windows
- » Fire extinguisher
- » Smoke detector
- » Carbon monoxide detector
- » Egress windows
- » LP gas leak detector
- » Break away safety brake
- » 4 wheel electric brakes

## POPULAR OPTIONS

- » Free-standing residential dinette with four chairs (Std. on 333)
- » Recliner(s) IPO swivel rocking chair(s)
- » Dual pane windows
- » 2ND A/C



## - CAMPING MADE EASY PACKAGE

\*STANDARDS AND OPTIONS ARE SUBJECT TO CHANGE WITHOUT NOTICE



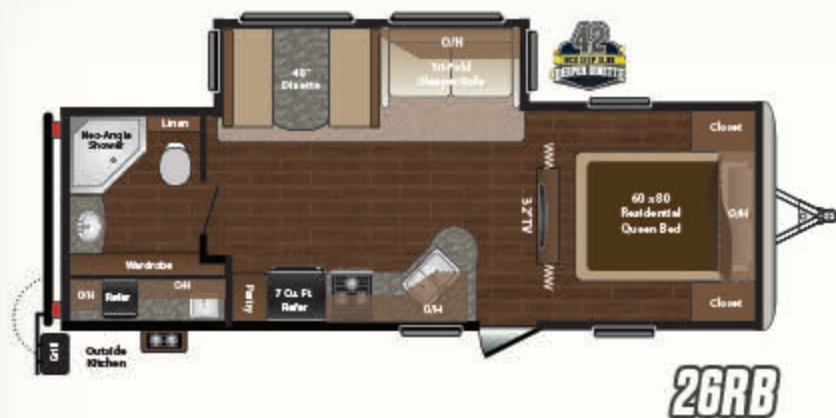
# CAMPFIRE EDITION



## A WHOLE NEW LEVEL OF COMFORT.

Sprinter introduces the Campfire Edition: A whole new level of comfort, with features for the modern camper. So take a load off, relax, and enjoy the Campfire.

- INDUSTRY BEST, 100" WIDE BODY CONSTRUCTION
- GENERATION 2 POWER STABILIZER JACKS
- 30" FRICTION HINGE ENTRY DOOR
- 48" 6 PERSON DINETTE
- ELECTRIC AWNING WITH AUTO-DUMP, FRICTION-HINGE ADJUSTMENT, LED LIGHT STRIP, MANUAL OVERRIDE, AND SPEAKERS
- 7 CU. FT. FRIDGE
- 32" HDTV
- ENTERTAINMENT SOUNDBAR
- 60" X 80" QUEEN BED
- LED LIGHTS IN ALL ROOMS
- 42" SLIDE OUTS



MODEL	26RB	27RL	28BH	31BH
SHOPPING WEIGHT	6740	6818	6951	8136
CARRYING CAPACITY	2460	2682	2549	1864
HITCH WEIGHT	785	725	840	990
EXTERIOR LENGTH*	29' 8"	32' 0"	31' 8"	35' 8"
EXTERIOR HEIGHT	11' 1"	11' 1"	11' 1"	11' 1"
FRESH WATER	81	81	81	81
WASTE WATER	32	32	32	32
GRAY WATER	64	64	64	64
LPG CAPACITY LB.	60	60	60	60

[WWW.KEYSTONERV.COM/SPRINTER-CAMPFIRE](http://WWW.KEYSTONERV.COM/SPRINTER-CAMPFIRE)

DISCLAIMER: Product information is as accurate as possible as of the date of publication of this brochure. All features, floor plans, and specifications in this brochure are subject to change without notice. Please also consult Keystone's web site at [www.keystonerv.com](http://www.keystonerv.com) for more current product information and specifications. Tow Vehicle Disclaimer. CAUTION: Owners of Keystone recreational vehicles are solely responsible for the selection and proper use of tow vehicles. All customers should consult with a motor vehicle manufacturer or their dealer concerning the purchase and use of suitable tow vehicles for Keystone products. Keystone disclaims any liability or damages suffered as a result of the selection, operation, use or misuse of a tow vehicle. KEYSTONE'S LIMITED WARRANTY DOES NOT COVER DAMAGE TO THE RECREATIONAL VEHICLE OR THE TOW VEHICLE AS A RESULT OF THE SELECTION, OPERATION, USE OR MISUSE OF THE TOW VEHICLE. 02/15



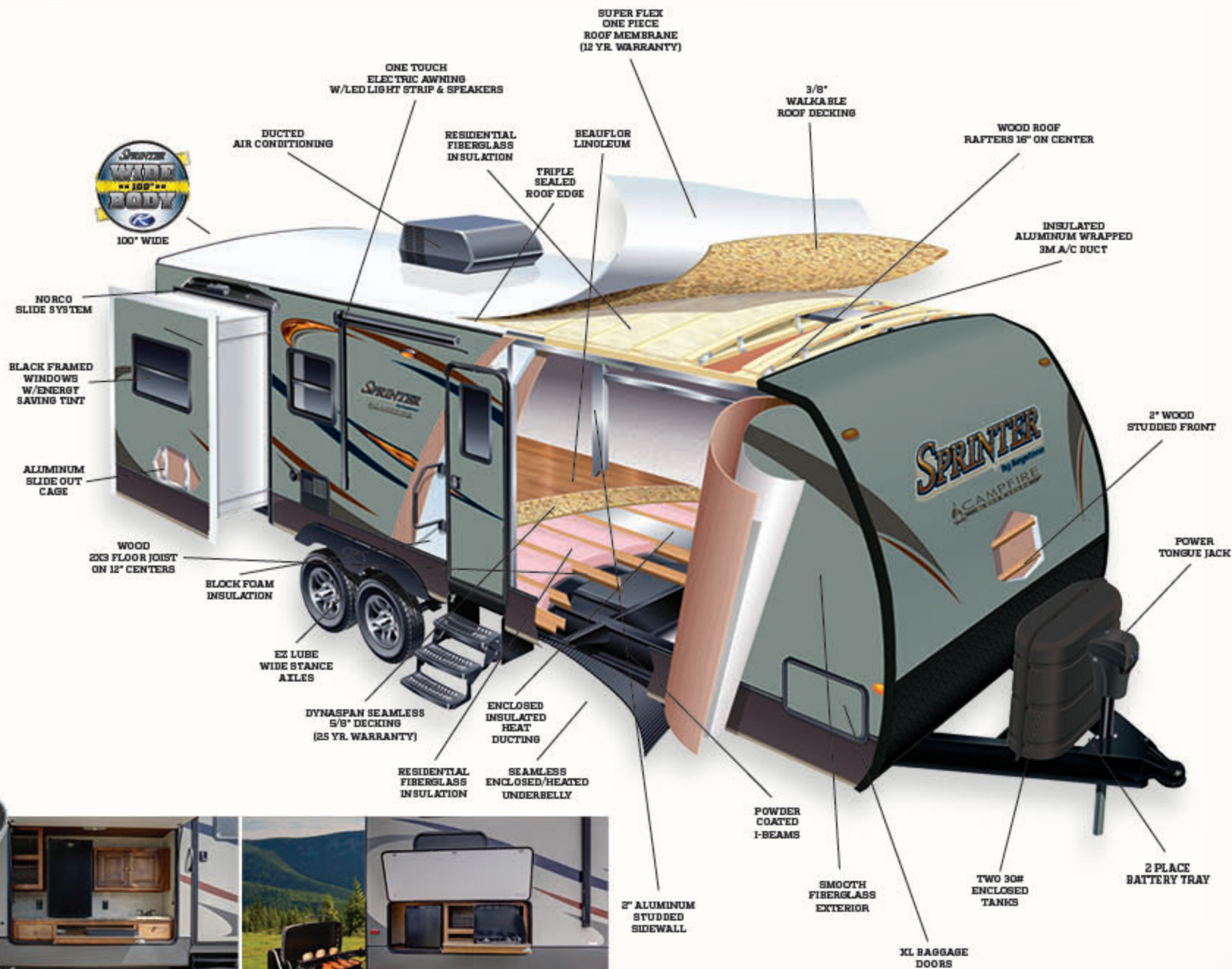
27RL  
SHOWN IN ALDER DECOR

↑ FRONT TO REAR VIEW OF  
27RL CAMPFIRE EDITION

# AWESOME MADE INEXPENSIVE.

The new Sprinter Campfire edition offers you four travel trailer floorplans loaded with features like Wide-Body construction, power awning with LED lights and built-in speakers, 60 by 80 queen bed, power jacks, 48-inch deep booth dinette, full outdoor kitchen, and much more. All this at a price you'll find extremely pleasing.





# ALL NEW FEATURES



## EXTERIOR FEATURES

- » Industry best, 100" Wide body construction
- » 80-32-64 maximum tank sizes
- » 100" wide-stance axles
- » Generation 2 power stabilizer jacks
- » 30" friction hinge entry door
- » Electric awning with Auto-Dump, friction-hinge adjustment, LED light strip, manual override, and speakers
- » Backed for rear ladder
- » 2 Battery tray
- » Splash guard under slide
- » Enclosed termination valves
- » Laminated aluminum framed sidewalls
- » Enclosed underbelly with direct vent heat
- » E-Z Lube axles
- » Tinted safety glass windows
- » Lockable baggage doors
- » Rear bumper storage w/ end caps
- » 9" easy opening triple entry step
- » XL entry door grab handle
- » Tough Guard painted skirt metal
- » 4" extra long rain spouts
- » Two 30lb. LP bottles with auto change-over regulator
- » Roto-cast seamless holding tanks
- » Black tank flush system
- » Outside shower
- » 30 Amp power cord
- » Cable and satellite hook-up
- » Aluminum wheels
- » Spare tire
- » Outside TV cable hookup with 110 recep
- » Outside kitchen models include: two burner cook-top, bumper mounted grill w/LP gas connection, 4.3 cu ft 110v fridge, and sink. (288H includes a 1.5 cu ft fridge & does not include sink)

## INTERIOR FEATURES

- » Full 96" interior width (Added square footage)
- » 5/8" water resistant Dynaspan flooring with 25 year full, and limited lifetime warranty
- » 80" Interior Height
- » Best in class 42" deep slideouts
- » Best in class 48" deep dinettes
- » 12 Volt, 55 amp converter
- » 35,000 BTU auto-ignition furnace
- » 13,500 BTU ducted air conditioner with "Quick Cool" (15k option)
- » Windows in both Slide-room end walls

- » Water heater bypass for easy winterization
- » Digital Thermostat
- » Residential cabinet hardware
- » Large picture window at the dinette
- » Overhead slide room cabinets
- » Interior access, manual override for the slide rooms
- » In-floor hard-ducted heat
- » LED floor lighting
- » LED overhead lighting in every room
- » Central Command Center for monitoring all tanks and battery, awning, slide-outs, lights, etc.
- » Screwed cabinetry with lumber-core stiles
- » Beauflor Linoleum w/ 7 year warranty (2 year cold crack)

## LIVING ROOM FEATURES

- » Best in class 42" deep slideouts
- » Best in class 48" deep dinettes
- » Sound bar entertainment system with Bluetooth technology, USB ports, and Blue Ray/DVD inputs
- » 32" HD LED TV
- » Cable TV hook-up with antenna and signal booster
- » Under booth dinette storage
- » Satellite prep with RG-6 cable
- » High grade carpeting
- » Residential fabric-covered valance w/removable drapes
- » Overhead storage in the slide room
- » Tri-fold sleeper sofa w/storage

## BATH FEATURES

- » Large vanity sink
- » Porcelain foot flush toilet
- » Residential medicine cabinet with mirror
- » ABS one piece tub surround
- » Neo angle glass shower (non-bunks)
- » Skylight over tub/shower
- » Reinforced tub support
- » Power roof vent fan
- » GFI receptacles in the bathroom
- » Illuminated light switch

## KITCHEN FEATURES

- » Crown Molding cabinetry
- » 6 gallon gas/electric DSI auto ignition water heater w/ 16.2 gph recovery
- » 3 burner high output gas range
- » Large split bowl sink with cover
- » 22" deep drawers

- » Full extension ball bearing metal tower guides
- » Metal pull-down sprayer faucet
- » Waste basket storage
- » Lighted range hood with exhaust fan
- » Microwave with carousel
- » 17" oven
- » 7 cu ft, double door, gas/electric fridge
- » Overhead cabinets above the sink

## BEDROOM FEATURES

- » Full, residential 60"x80" Dream Collection bed
- » High grade carpet in master bedroom
- » Under bed storage
- » Color matched bedspread
- » LED reading lights
- » Electrical outlet near bed
- » Roof vent

## SAFETY FEATURES

- » Dual hitch safety chains
- » Safety glass windows
- » Fire extinguisher
- » Smoke detector
- » Carbon monoxide detector
- » Egress windows
- » LP gas leak detector
- » Break away safety brake
- » 4 wheel electric brakes

## POPULAR OPTIONS

- » Upgraded 15,000 BTU AC
- » Free-standing residential dinette with four chairs
- » 50 AMP electrical service w/detachable cord, and 2nd AC prep (318H Only)



CAMPING MADE EASY PACKAGE

\*STANDARDS AND OPTIONS ARE SUBJECT TO CHANGE WITHOUT NOTICE

TRAVEL TRAILERS & FIFTH WHEELS

# SPRINTER

CAN'T COMPETE WITH  
THE ORIGINAL



// 19 YEARS AND STILL GOING STRONG //

YOUR LOCAL DEALER IS:



Get the free mobile app  
at <http://gettag.mobi>  
and scan this tag.

FEBRUARY 2015



**Keystone RV  
Company**

WWW.KEYSTONERV.COM  
574.535.2100 • 2642 HACKBERRY DRIVE  
P.O. BOX 2000 • GOSHEN, IN 46527



Member  
**RVIA**  
RECREATIONAL VEHICLE  
INDUSTRY ASSOCIATION

Go RVing.

DISCLAIMER: Product information is as accurate as possible as of the date of publication of this brochure. All features, floor plans, and specifications in this brochure are subject to change without notice. Please also consult Keystone's web site at [www.keystonerv.com](http://www.keystonerv.com) for more current product information and specifications. Tow Vehicle Disclaimer. CAUTION: Owners of Keystone recreational vehicles are solely responsible for the selection and proper use of tow vehicles. All customers should consult with a motor vehicle manufacturer or their dealer concerning the purchase and use of suitable tow vehicles for Keystone products. Keystone disclaims any liability or damages suffered as a result of the selection, operation, use or misuse of a tow vehicle. KEYSTONE'S LIMITED WARRANTY DOES NOT COVER DAMAGE TO THE RECREATIONAL VEHICLE OR THE TOW VEHICLE AS A RESULT OF THE SELECTION, OPERATION, USE OR MISUSE OF THE TOW VEHICLE. 02/15

CAMPING MADE EASY | [WWW.KEYSTONERV.COM/SPRINTER-WIDE-BODY](http://WWW.KEYSTONERV.COM/SPRINTER-WIDE-BODY)