

MIRADA

Brings MORE to the road...



Coachmen
Leader to the Great Outdoors.

High-End Value. . . Enviably Affordable.

Step into the new Coachmen Mirada and step into something special: a Class A motorhome with high-end features at an affordable price!

Coachmen RV, a Division of Forest River Inc., has been dedicated to giving RVers the best value for their RV dollar. Now we've focused even more on making it easier to afford the best in motorhome living. We guarantee that you'll be impressed with what your money can buy. So take a look and see the elegance, the amenities and ease of use that the Mirada brings to the road. We're leading the way in creating new travel experiences for your pleasure and your pocketbook, making today's technology work for today's RVers!



Driver comfort begins with the sporty wrap-around dash.



Model 35DL Shown



Coach command center makes it simple to use many of the commonly used gauges and switches.

40" TV upgrade and fireplace option available in select models.



Even with slide room in for travel, there is plenty of aisle space available.



Ever seen a kitchen this grand in a coach at this price point? Didn't think so. The graceful lines and designer hardware accentuate the galley's more practical features. Like the 30" residential microwave, double-door refrigerator, space-saving flush-mounted range and flush-mounted sink with Corian covers.



35DL Kitchen with optional Cognac Maple wood


Whether it's your vacation home or something more, the Mirada surrounds you with amenities designed to enhance every aspect of your motorhome experience.



Convertible Dinette

Comfortable and relaxing in any setting, the radius booth dinette is easy to take down for sleeping and is plenty spacious for enjoying quality time with family and friends.

Elegance, Made For You.



For viewing pleasure, all Miradas have a 32" LCD TV in the living room and 26" LCD in the bedroom standard.



Each Mirada bedroom is designed with style, comfort and storage in mind.



MIRADA PAINT SCHEMES



Partial Paint



Sapphire Blue



Nevada Sand



Ivory Coast



Burgundy Blaze

STANDARD FEATURES

INTERIOR APPOINTMENTS

- Corian kitchen countertop
- Congoleum linoleum
- Oil rubbed bronze hardware
- Hardwood cabinet/raised panel doors (upper)
- Radius slider windows with safety glass
- Reclining/swivel pilot seats
- Booth dinette
- Night shades
- Euro chair (32DS, 34BH, 35DS)
- 84" Jack knife sofa (29DS Only)
- Visionary sofa (N/A 29DS)

INTERIOR EQUIPMENT

- Radio AM/FM/CD
- Cable TV jack
- LP leak alarm and smoke detector
- Carbon monoxide detector
- Fire extinguisher
- TV antenna and roto package
- 32" LCD TV coach and DVD player
- 26" LCD TV bedroom

BATH AND WATER

- Porcelain toilet with foot flush
- One piece ABS shower surround
- Glass shower door
- Power bath vent
- 6-gallon (gas) DSI water heater
- Demand water pump
- Skylight over the shower
- No Mess™ termination with light, shower, pump switch

GALLEY

- Range hood with light
- Flush mount, double door refrigerator
- Single lever high kitchen faucet
- Double bowl kitchen sink with sink covers
- 3-burner range/oven
- 30" residential microwave
- Corian® kitchen countertops and Corian® sink covers

ELECTRICAL//HEATING/AC

- 30' - 50 amp power cord
- 55 amp, 110/12-volt power converter
- GFI circuit
- Outside receptacle (DS)
- Emergency start switch
- Lighted trunk boxes
- Patio light
- 30,000 BTU E.I. furnace
- 13,500 BTU roof air conditioner - ducted
- 2nd 13,500 BTU roof AC
- Single coach battery
- Coach command center

AUTOMOTIVE/EXTERIOR

- Back up camera (sideview ready)
- Tilt steering wheel
- Cruise control
- Intermittent wipers
- Dash air conditioning
- Radial tires
- Rear mud flaps only
- Power entrance step-double
- Crowned, laminated TPO roof
- Full basement with pass through storage

- Radius trunk doors
- Fiberglass front cap
- Dead bolt lock-entrance door
- Radius entry door
- Patio awning
- 5,000 towing hitch with 7-way plug
- Rear mounted roof ladder
- Non-powered exterior mirrors
- Stainless steel wheel liners
- Automatic leveling jacks
- Slide-out room awnings
- High Gloss Sidewalls
- 5.5 KW Onan generator
- Power main awning

STAND ALONE OPTIONS

- Side view cameras
- Dual pane windows
- 2nd coach battery
- Dual 13" TV/DVD player/AM/FM radio (34BH only)
- DVD player in bedroom
- CSA upfit
- Wardrobe IPO bunks (34BH only)
- Valve stem extenders
- Full body paint or partial paint
- Diamond shield paint protection (mandatory with full paint)
- Power heated mirrors
- Entertainment/Computer hutch (32DS & 34BH only) IPO Euro Chair
- Outside entertainment (N/A 29DS)
- Television 40" upgrade (N/A 29DS/28DS)
- Fireplace (35DL only)

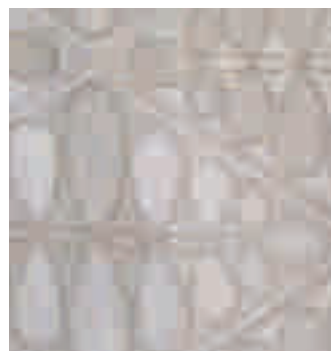
MIRADA DECOR WOOD COLORS & INTERIOR PATTERNS



Cognac Maple



Nickel



Parchment

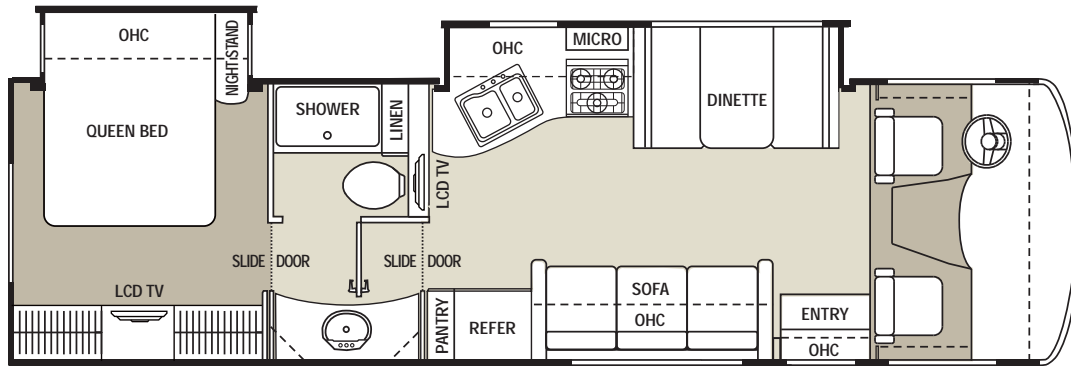


Stone

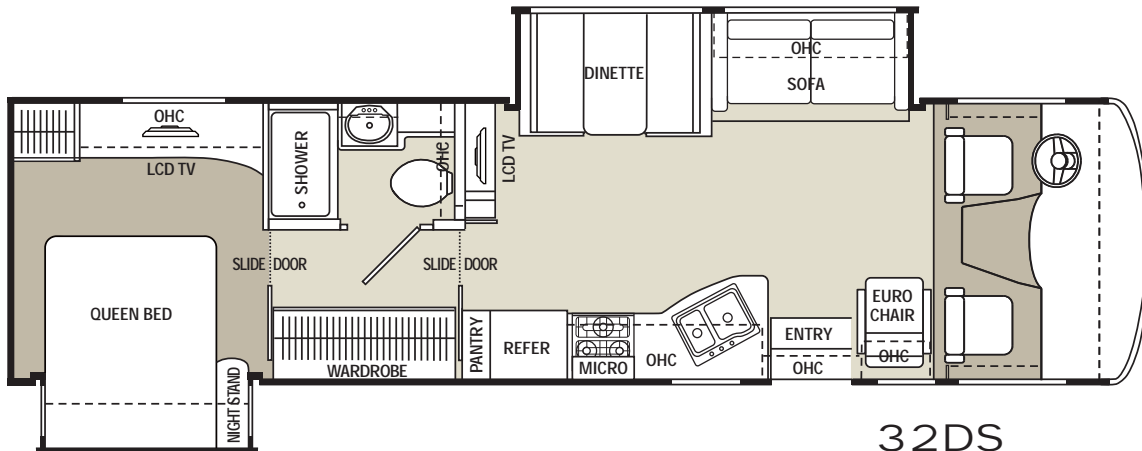
Décor selections are subject to change throughout the model year. Please visit your Coachmen dealer or www.easyRVing.com for current décor availability.

MIRADA FLOORPLANS

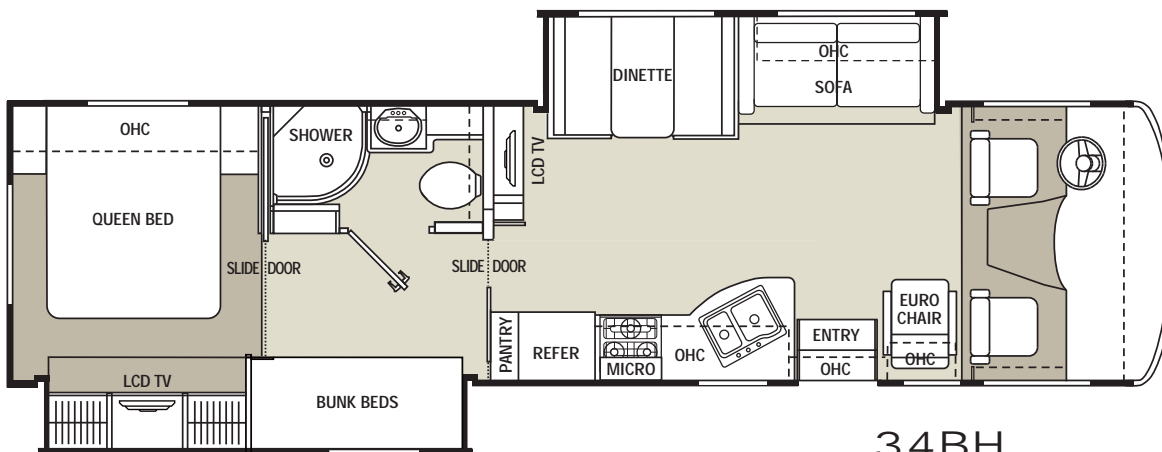
■ Carpet ■ Linoleum



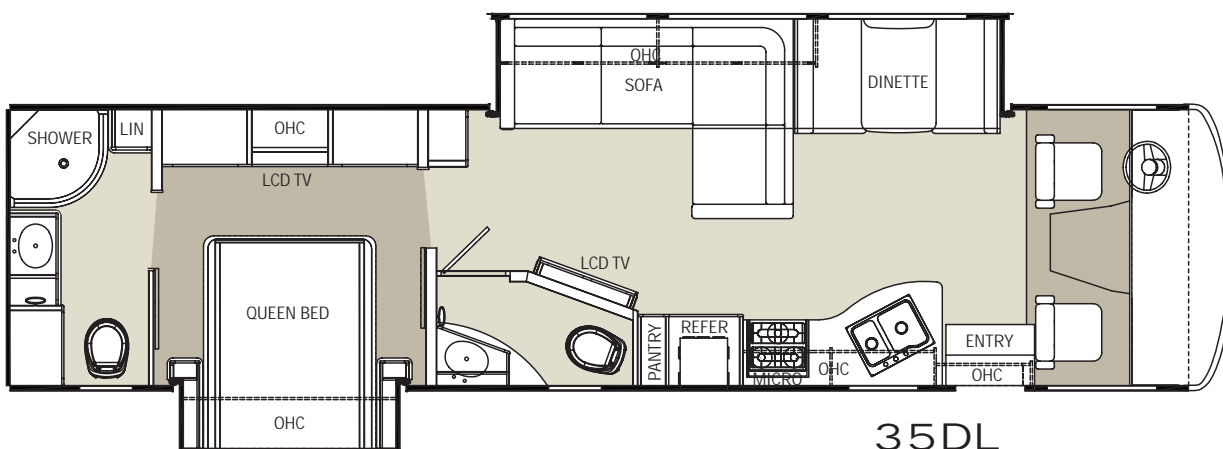
29DS



32DS



34BH



35DL

SPECIFICATIONS

Chassis	29DS	32DS	34BH	35DL
Engine	V-10 6.8L Triton	V-10 6.8L Triton	V-10 6.8L Triton	V-10 6.8L Triton
GVWR (lbs.)	20,500	20,500	22,000	22,000
GCWR (lbs.)	26,000	26,000	26,000	26,000

MEASUREMENTS

Wheel base	228"	228"	242"	242"
Exterior (w/o ladder)	31' 11"	33' 11"	34' 9"	36' 6"
Height (with AC)	11' 11"	11' 11"	11' 11"	11' 11"
Interior height	80"	80"	80"	80"
Awning size	18'	18'	14'	18'

CAPACITIES

Fuel (gal.)	80	80	80	80
LP gas capacity (gal.)	20	20	20	20
Fresh water (gal.)	66	66	66	66
Waste water (gal.)	43	45	45	45/45
Gray water (gal.)	45	45	45	45
Water heater (gal.)	6	6	6	6
Furnace (BTUs)	30,000	30,000	30,000	30,000



Forest River, Inc. encourages our customers to purchase their Forest River products whenever possible for the following reasons:

It is the goal of Forest River, Inc. that all of our RV owners fully enjoy the RV experience and that customer satisfaction meets or exceeds their expectations!

- 1) Forest River, Inc. dealers are independently owned and operated businesses so priority service and scheduling is at their discretion and is often provided to customers that purchased their unit at that dealership.
- 2) Purchasing locally allows customers to establish meaningful relationships with a dealer, enhancing the RV experience through assistance with product questions, user tips or RV regulations for your state or country, and much more!
- 3) Canadian customers must meet requirements to bring an RV purchased out of the country to their home. These requirements may involve additional inspections and certifications, taxes and fees. Your local Canadian Dealer is a professional at meeting these requirements.
- 4) Scheduling timely warranty repairs and adjustments through a local dealership provides far greater flexibility and convenience to you, the customer!

GVWR (Gross Vehicle Weight Rating):

The maximum permissible weight of the unit, including the unloaded vehicle weight (UVW) plus all fluids, cargo, optional equipment and accessories. For safety and product performance, do not exceed the GVWR.

GCWR (Gross Combined Weight Rating):

The maximum total weight of the loaded unit, plus a tow vehicle. This includes the weight of both the unit and tow vehicle, fuel for each, all other fluids, cargo, occupants, optional equipment and accessories.

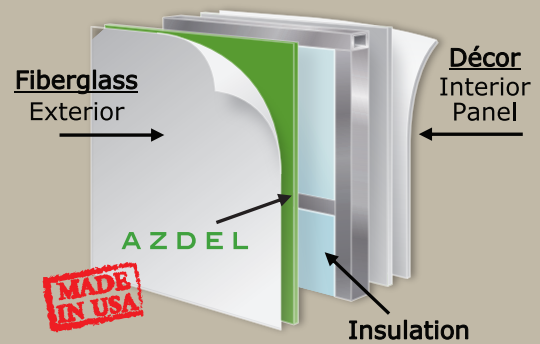
Important Note: All capacities are approximate, and all dimensions are nominal. Coachmen motorhomes are designed to allow for a wide variety of uses, extended trips with two people or short trips with multiple people. Accordingly, each unit allows ample room for sleeping, seating, fluids and cargo. While the customer is the beneficiary of this design, the customer also bears the responsibility to select the

proper combination of passengers, cargo, load, and tow vehicle without exceeding the chassis weight capabilities. Consumer may need additional braking capacity to tow loads greater than 1,000 pounds.

Seat belts should always be worn for passenger safety. Seat belts are provided at most locations to allow convenience in selecting which seat to occupy. However, it is not intended that all seating positions equipped with a seat belt may be occupied while the vehicle is in motion, without regard to other weight factors.

All Coachmen motorhomes are designed to ensure that the number of passengers allowed while the vehicle is in motion will always at least equal the stated sleeping capacity. Though extra seat belts may be provided, for your safety and the proper operation of your vehicle, limit your passengers to the number allowed by the Net Carrying Capacity of your vehicle.

RV SIDEWALL CUT-AWAY Lighten Your Adventure:



Featuring
AZDEL
ONBOARD™
COMPOSITE SIDEWALLS

Coachmen RV uses Azdel Composite Panels to replace wood in RV sidewalls. Azdel Panels are constructed using a blend of polypropylene and fiberglass, creating an extremely strong, lightweight, and water resistant wall.

Travel Easy™ Roadside Assistance

RVing is easier with Coachmen's Travel Easy™ Roadside Assistance provided FREE the first year of ownership to those who purchase a New Coachmen RV. Administered by Coach-Net, this service provides you with 24/7 operational, technical and emergency road service coverage. Also included is towing, fuel delivery, jump starts, lockout service, tire changes, mobile mechanic and unlimited technical assistance. Anywhere. Anytime. Travel Easy™ is the security of knowing that help is an easy phone call away.



FREE One Year Membership – Coachmen Owners Association!



Coachmen is proud to sponsor the largest manufacturer sponsored camping club in North America ... Coachmen Owners' Association (COA). COA provides you a world of ways to enjoy your RV. This is FUN ON OVERDRIVE and provides: Free Trip Routing, Exciting Tours & Rallies, Free Campground Directory, Local/State Club Activities, Easy RVing Magazine Free, Theme Park Discounts, Fuel Discounts, Free onebigplanet® Memberships with discounts at 180,000 merchants and Much More! Every new Coachmen RV buyer is eligible for a 1 Year FREE membership in the Coachmen Owners' Association. It all adds up to an easy ownership experience!



Coachmen
Leader to the Great Outdoors.

Coachmen RV, a Division of Forest River Inc.,
A Berkshire Hathaway Company
423 N. Main St., P.O. Box 30, Middlebury, IN 46540

To learn more about Coachmen RV and our products and see how Coachmen is making the easy life easier, visit www.coachmenrv.com

All information contained in this brochure is believed to be accurate at the time of publication. However, during the model year, it may be necessary to make revisions and Coachmen reserves the right to make all such changes without notice, including prices, colors, materials, equipment and specifications as well as the addition of new models and the discontinuance of models shown in this brochure. Therefore, please consult with your Coachmen dealer and confirm the existence of any materials, design or specifications that are material to your purchase decision.

©Copyright 2013 Coachmen RV a Division of Forest River Inc – All Rights Reserved



Learn More
Scan this barcode using
a QR Reader on your
smart phone to learn
more about Forest River.



A Berkshire Hathaway company.