

# Travato

# WINNEBAGO<sup>®</sup>



## ***Why Travato?***

- Deluxe Froli<sup>®</sup> sleep system
- Easy-to-swivel cab seats
- Exterior speaker system
- Available bike and kayak racks
- Truma Combi<sup>™</sup> Eco Plus heating system with 1,700-watt heating element
- Optional 100-watt solar panel battery charger



On the Cover: 59K Granite Upgrade Package Full-Body Paint

59K Urban with High-Gloss Marbella Cherry Cabinetry

## Adventure Seekers: Welcome Home

“Brilliant!” “Best value.” “Excited for the future!”—that’s just a sample of the praise heaped on last year’s re-designed Winnebago Travato™. We’re excited to say, the future is now. The adventurous spirit of the Travato carries forward to the all-new 59K with a re-designed open floorplan featuring a space-saving bath area and the deluxe Froli® sleep system.

Optional bike and kayak racks help you enjoy a rugged day outdoors, while amenities such as Ultraleather™ furniture (59G), Corian® countertops, and an exterior sound system help you relax in comfort when the sun goes down. The Travato doesn’t just enable your adventurous lifestyle, it enhances it. Brilliant, indeed.



### Recognized Quality

The Recreation Vehicle Dealer Association annually rates RV manufacturers and awards the Quality Circle Award to manufacturers that provide exceptional products, service and support. Winnebago Industries is proud to be the only manufacturer that has received this award every year since its inception.





59K Urban with High-Gloss Marbella Cherry Cabinetry

Our SmartSpace™ design philosophy is critical to making the most of your van-style floorplan. Nowhere is that more evident than the Flex Bed System in the 59G that quickly converts from two bench seats and a dining table into a large sleeping area. Choose the 59K and enjoy twin beds that double as facing sofas by day. For movies and more, the standard HDTV/coach stereo system includes AM/FM radio, CD/DVD player, and Bluetooth™ connectivity.



59K Lounge HDTV



59K Pull-Out/Flip-Out Table







59K Galley

Enjoy a smartly-configured galley that houses a microwave oven and 2-burner range top with a glass cover and heat shield. The refrigerator/freezer works on both 110-volt and battery power so you'll always have cold food. A removable freezer unit in the 59G delivers additional cold storage flexibility.



59K Standard 110/12-Volt Refrigerator/Freezer



59K Microwave/Convection Oven



59K Pull-Out Countertop Extension



Full-Extension Drawer Slides



2-Burner Range with Glass Cover





59K Sink



59K Sink Glass Cover



59K Cutting Board



59K Drain Pan



You will appreciate the surprisingly spacious Murphy bed in the 59G, while others may prefer the 59K with twin beds that double as sofas. Both models offer the deluxe Froli sleep system that delivers the comfort of an innerspring mattress in a lightweight design built especially for RVs. The cleverly-designed shower/bath area makes the most of the available space.



59K Twin Bed with Raised Headrest



59K Twin Beds



Deluxe Froli Sleep System





59K Bathroom



59K Wardrobe



59K Fold-Down Sink

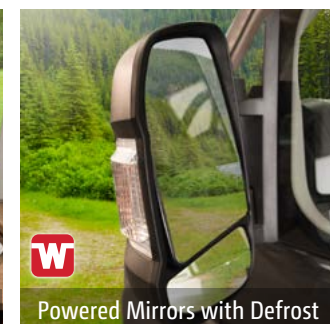


**W**  
Dash

To expand your living space, the cab seats recline and swivel toward the lounge area so you can enjoy a meal or watch TV. The touch screen stereo system includes a GPS system and a Rearview Monitor System for safer backing and maneuvering. You'll love the Ram ProMaster chassis with 280-hp gas engine, or select the available Ram ProMaster diesel engine for improved gas mileage and torque.



**59K** Swivel Cab Seats



**W**  
Powered Mirrors with Defrost



Bike racks. Kayak racks. No matter what your adventurous lifestyle demands, the Travato has an accessory available to accommodate it. At the end of an active day, extend the powered patio awning and enjoy a well-earned break while you relax to some music from the exterior speakers. Two rear doors open wide when you need to carry larger loads, and available screen doors let the cool breeze in while keeping the bugs out.



59K Available Bike Rack



Available Side Screen Door



Rear Doors



Exterior Wash Station



Available Kayak Rack

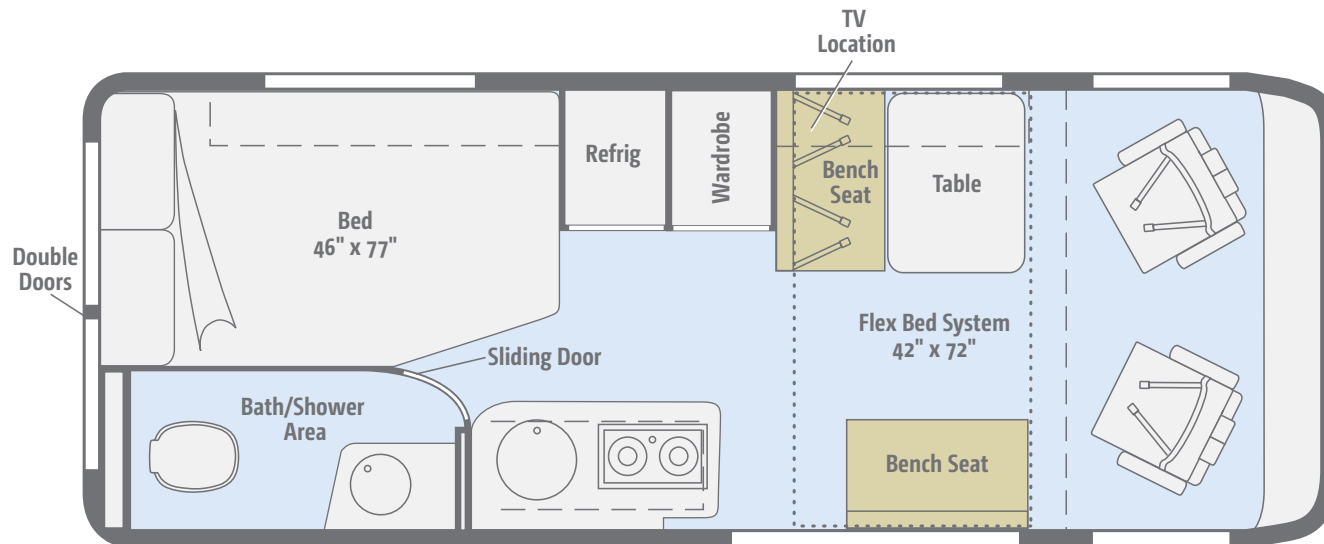




Click here to explore this floorplan's web page.

## 59G

This floorplan offers exceptional flexibility with the Flex Bed System near the cab and a large Murphy bed that flips up to make room for bikes or other large items.



Standard  
Ultraleather



Vinyl



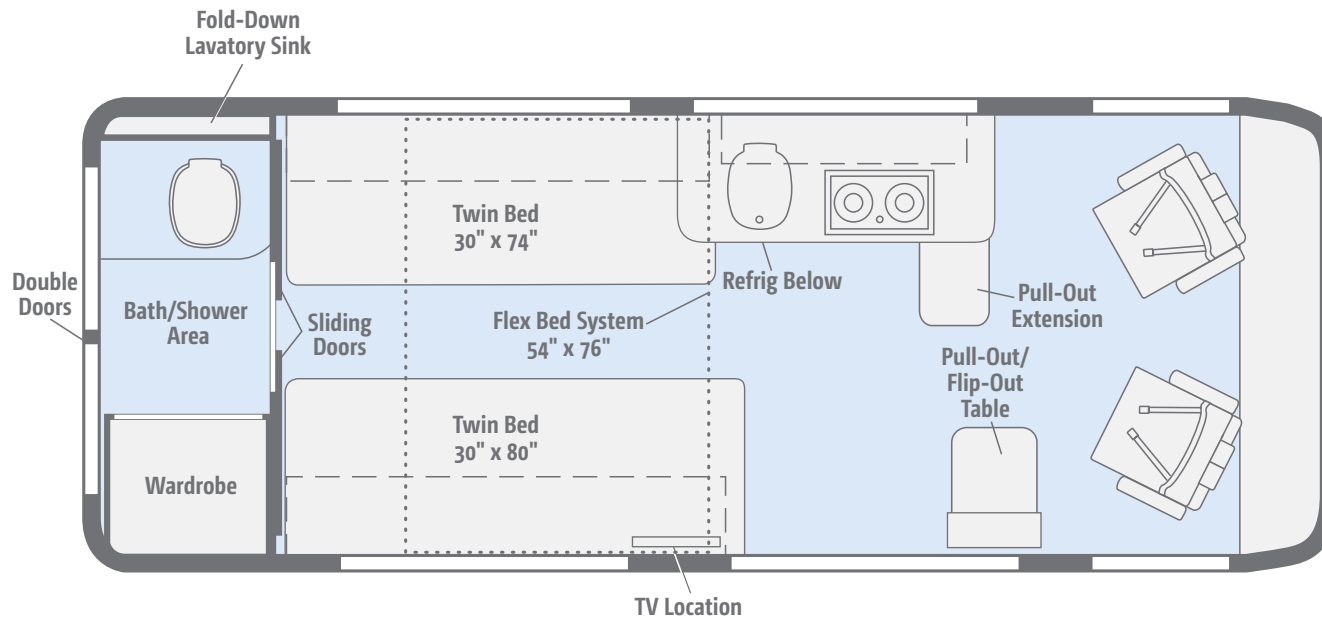




Click here to explore this floorplan's web page.

## NEW 59K

This all-new open floorplan boasts a twin bed configuration with a spacious rear bath/shower area and swivel cab seats that expand your living space.



Vinyl

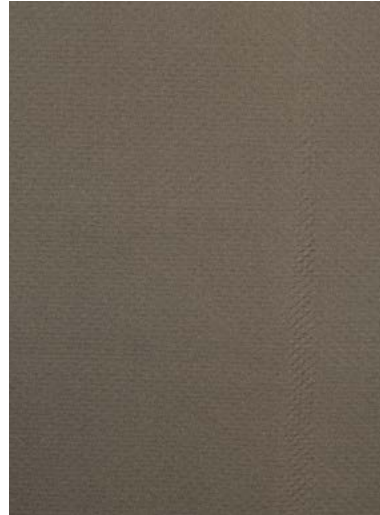


Choose from three fabric collections and two wood finishes.

## Urban



Ultraleather



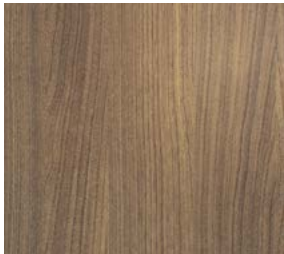
Bed Cover



Corian Countertop



Vinyl



High-Gloss  
Marbella Cherry

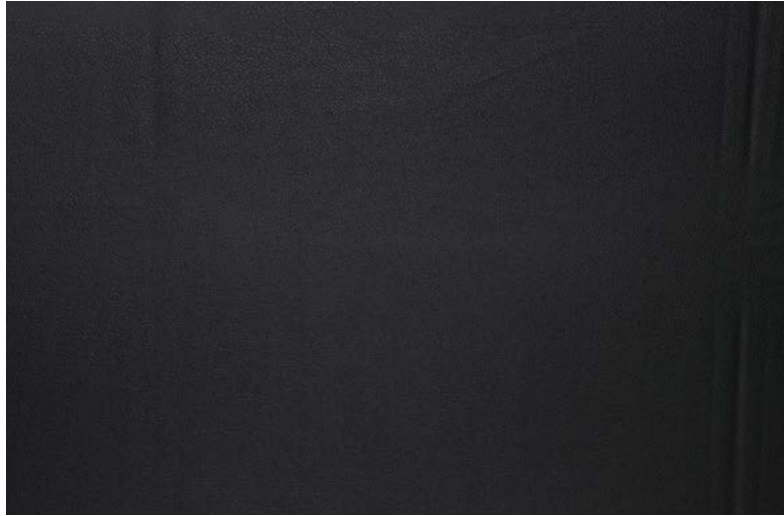


Aosta Cherry

Winnebago® reserves the right to change décor materials and specifications without notice or obligation. Décor is also available online at [WinnebagoInd.com](http://WinnebagoInd.com).

Choose from three fabric collections and two wood finishes.

## Rave



Ultraleather



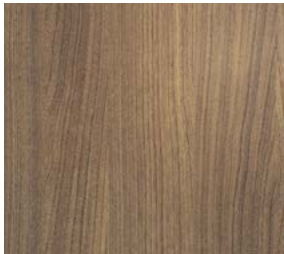
Bed Cover



Corian Countertop



Vinyl



High-Gloss  
Marbella Cherry



Aosta Cherry

Winnebago® reserves the right to change décor materials and specifications without notice or obligation. Décor is also available online at [WinnebagoInd.com](http://WinnebagoInd.com).



Choose from three fabric collections and two wood finishes.

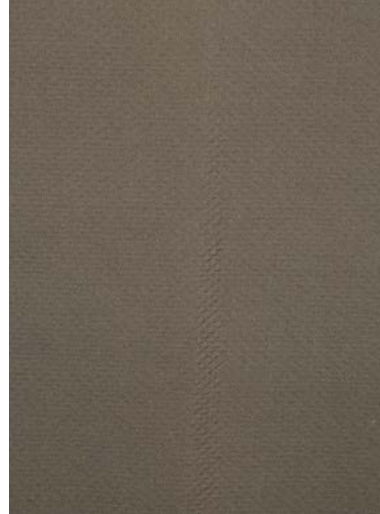
## Crosshatch



Ultraleather



Feature Fabric



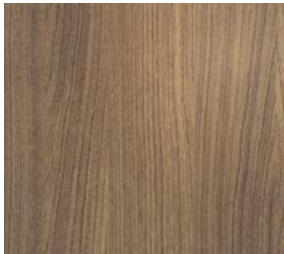
Bed Cover



Corian Countertop



Vinyl



High-Gloss  
Marbella Cherry



Aosta Cherry

Winnebago® reserves the right to change décor materials and specifications without notice or obligation. Décor is also available online at [WinnebagoInd.com](http://WinnebagoInd.com).

Choose from six stylish full-body paint options to style your Travato.



**Granite Graphics Delete**  
FULL-BODY PAINT



**Granite Upgrade Package**  
FULL-BODY PAINT



**Flame Red Upgrade Package**  
FULL-BODY PAINT



Choose from six stylish full-body paint options to style your Travato.



**Bright Silver Graphics Delete**  
FULL-BODY PAINT



**Bright Silver Upgrade Package**  
FULL-BODY PAINT



**Bright Silver with Graphics**  
FULL-BODY PAINT

Weights & Measures	59G	59K
Length	21'	21'
Exterior Height <sup>1</sup>	9'1"	9'1"
Exterior Width	6'9"	6'9"
Awning Length	11'6"	11'6"
Interior Height	6'3"	6'3"
Interior Width	6'2"	6'2"
Freshwater Tank Capacity <sup>2</sup> (gal.)	21	25
Water Heater Capacity (gal.)	2.6*	2.6*
Holding Tank Capacity - Black/Gray <sup>2</sup> (gal.)	11/15	13/13
LP Capacity <sup>3</sup> (gal.)	6	6
Fuel Capacity (gal.)	24	24
GCWR <sup>4</sup> (lbs.)	11,500	11,500
GVWR (lbs.)	9,350	9,350
GAWR - Front (lbs.)	4,630	4,630
GAWR - Rear (lbs.)	5,291	5,291
Wheelbase	159"	159"
Seating Capacity	4	2

\* Truma Combi™ Eco Plus water/coach heater system runs on LP (includes a 1,700-watt heating element)

## Ram ProMaster Chassis

Ram ProMaster 280-hp, 3.6L V6 gas engine, 6-speed automatic 62TE transmission, 180-amp. alternator

4-wheel ABS brakes

Stylized aluminum wheels

Trailer Hitch<sup>4</sup> 3,500-lb. drawbar/350-lb. maximum vertical tongue weight

4-pin wiring connector

### OPTIONAL EQUIPMENT

Ram ProMaster 174-hp, 3.0L diesel engine, 6-speed automated manual transmission, 220-amp. alternator (only available w/the bright silver paint exterior)

## Cab Conveniences

**Radio/GPS Navigation/Rearview Monitor System** 5" LCD color touch screen, steering wheel controls, color rear camera, SiriusXM™ (one-year complimentary subscription included), Bluetooth™, USB ports

**Cab seats armrests, adjustable lumbar support, adjustable headrest, and slide/swivel/recline**

**Airbags driver and passenger front, side curtain, side seat bolster**

**Cruise control**

**3-point seat belts**

**Power steering w/telescoping wheel**

**Power mirrors w/defrost and turn signal**

**Power door locks w/remote**

**Power windows**

**12-volt powerpoints**

**Sunvisors**

**Front and cab window privacy panels**

**Carpet floor mat**

**Appliqué package**

## Interior

**22" HDTV and Coach stereo system** w/AM/FM radio, Bluetooth™, CD/DVD player, remote

**Amplified Jack® digital TV antenna**

**LED ceiling lights**

**MCD blackout roller shades**

**Soft vinyl ceiling**

**Tinted coach windows**

**Powered ventilator fan** (galley)

**Powered roof vent** (bath)

**Systems monitor panel**

**Gear net** (59G)

### OPTIONAL EQUIPMENT

**Powered ventilator fan** w/rain cover, electric lift, remote w/LCD screen, thermostat operation w/intake, and exhaust airflow (galley)

## Galley

**Corian® countertop**

**Microwave oven w/touch controls** (59G)

**Microwave/convection oven w/touch controls** (59K)

**2-burner range top w/glass cover and heat shield**

**Refrigerator/freezer, compressor-driven 110/12-volt** (59K)

**Refrigerator/freezer, LP/110/12-volt** (w/removable freezer unit) (59G)

**Stainless steel sink w/glass cover** (The 59K also includes dishpan, cutting board, drain pan, and silverware rack)

**Cold water filtration system** (galley)

**Pull-out countertop extension** (59K)

## Bath

**Flexible showerhead**

**Medicine cabinet**

**Mirror** (59G)

**Fold-down sink** (59K)

**Toilet w/foot pedal and sprayer**

**Shower curtain**

**Shower package** w/showerpan and flooring material shower mat

**Shower w/wall surround** (59G)

**Stainless steel round sink** (59G)

**Tissue holder**

**Towel bar** (59K)

**Sliding tambour bath door**

## Bedroom

**Double bed w/access to storage below and mattress cover** (59G)

**Twin beds w/storage below passenger side** (59K)

**Deluxe Froli® Sleep System**

## Exterior

**Powered entrance step**

**Powered patio awning w/LED lighting** (LED lighting NA w/roof-mounted kayak racks)

**Porch light w/interior switch**

**Rear mud guards**

**Exterior speaker system**

**Stainless steel valance panel trim**

### OPTIONAL EQUIPMENT

**Aluminum Cab Steps**

**Rear screen door**

**Side screen door**

**Bike rack**

**Roof-mounted kayak racks (2) w/ladder**

## Heating & Cooling System

**13,500 BTU low-profile high-efficiency roof air conditioner**

**Truma Combi Eco Plus Heating System** w/1,700-watt heating element



## Electrical System

**AC/DC load center, 45-amp. converter/charger**

**Auxiliary start circuit**

**2-deep-cycle Group 31 batteries** (AGM maintenance-free)

**Coach battery disconnect system**

**Automatic dual-battery charge control**

**30-amp. power cord**

**Exterior TV jack**

**Exterior AC/DC receptacle**

**2,800-watt Cummins Onan® gas generator** (NA w/diesel engine option)

**Energy Management System**

## OPTIONAL EQUIPMENT

**100-watt solar panel battery charger** w/controller, junction box, and plug for additional portable solar panel

**2,500-watt Cummins Onan LP generator** (required w/diesel engine option) (NA w/gas engine)

## Plumbing System

**LPG accessory connection** (patio area)

**Pressurized city water hookup**

**Exterior wash station w/pump switch**

**10' sewer hose**

**TrueLevel™ holding tank monitoring system**

**Winterization Package** water heater bypass valve and siphon tube

**On-demand water pump**

**Permanent-mount LP tank w/gauge**

**Shower drain pump** (59G)

**Macerator pump** (59G gray tank only)

**Gravity tank dump** (59G black tank only, 59K black and gray tanks)

**Holding tank flushing system**

## Safety

**Child seat anchor** (forward facing dinette) (59G)

**LP, smoke, and carbon monoxide detectors**

**10 BC fire extinguisher**

**Ground fault interrupter**

**Fog lamps**

## Warranty<sup>5</sup>

**12-month/15,000-mile basic warranty<sup>6</sup>**

1. The height of each model is measured to the top of the tallest standard feature and is based on the curb weight of a typically equipped unit. The actual height of your vehicle may vary by several inches depending on chassis or equipment variations. Please contact your dealer for further information.
2. Capacities are based on measurements prior to tank installation. Slight capacity variations can result due to installation applications.
3. Capacities shown are tank manufacturer's listed water capacity (WC.) Actual filled LP capacity is 80% of listing due to overfilling prevention device on tank.
4. Actual towing capacity is dependent upon your particular loading and towing circumstances, which includes the GVWR, GAWR and GCWR as well as adequate trailer brakes. Please refer to the Operator's Manual of your vehicle for further towing information.

NA Not Available

Not all items available in combination. See dealer for details.

Winnebago's\* continuing program of product improvement makes specifications, equipment, model availability, and prices subject to change without notice. Published content reflects the most current product information at time of printing. Please consult your dealer for individual vehicle features and specifications.





Let us host  
your next

# Adventure



[WGOAdventures.com](http://WGOAdventures.com)

Connect with Winnebago (Click one of the following)



Like us



Follow us



Watch us



Show your Winnebago love  
with high-quality gifts and wearables.



Apparel | Gifts | Parts | Gear

[WinnebagoOutdoor.com](http://WinnebagoOutdoor.com)

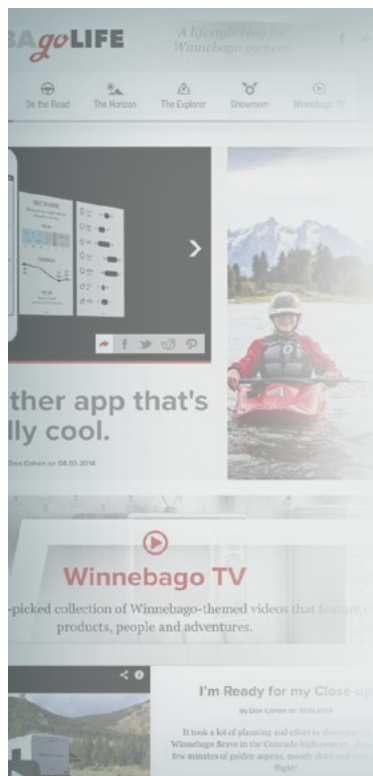
Find your style



**WINNEBAGO**  
OUTDOOR

## WinnebagoInd.com Has All The Answers

Visit [WinnebagoInd.com](http://WinnebagoInd.com) on your computer, smartphone, or tablet for the latest product information and updates.



## Welcome to GoLife!

Visit our lifestyle blog  
for motorhome news,  
personal travelogues,  
and community stories.

[WinnebagoLife.com](http://WinnebagoLife.com)

**goLIFE**



## **PREFERRED PROGRAM**

We back our motorhomes with best-in-class support both before *and* after the sale:

- 12-month/15,000-mile basic limited warranty
- 36-month/36,000-mile limited warranty on structure
- 10-year limited parts-and-labor warranty on fiberglass roof
- Complimentary 24-hour roadside assistance program



## **PREFERRED CARE PROGRAM**

We back our motorhomes with best-in-class support both before *and* after the sale:

- 12-month/15,000-mile basic limited warranty
- Complimentary 24-hour roadside assistance program



- TripSaver® Fast Track Parts guarantees that in-stock warranty parts ship directly to your dealer within 24 hours
- National dealer service network



For more information, visit us  
**WGOService.com**

**WINNEBAGO**  
INSURANCE



Insurance, Winnebago  
provide all the coverage and  
feel at home on the road.

ation:

**WINNEBAGO**

## CONTACT US

### GENERAL INQUIRIES

Corporate Switchboard  
(641) 585-3535

### CURRENT PRODUCT OWNER AND SERVICE-RELATED INQUIRIES

(800) 537-1885  
or @winnebagoind.com

### NEW VEHICLE SALES INQUIRIES

sales@winnebagoind.com

### FAX

(641) 585-6966

### POSTAL ADDRESS

Winnebago Industries, Inc.  
P.O. Box 152  
Forest City, IA 50436

### STREET ADDRESS

Winnebago Industries, Inc.  
605 West Crystal Lake Road  
Forest City, IA 50436



## Join the Club, Join the Fun

Here's the perfect way to begin your life on the road as the owner of a new Winnebago – by joining the exclusive WIT Club. Start your adventure with other fun-loving WIT Club members from across the country and get the most out of your new Winnebago motorhome.



### Members enjoy:

- Caravans and rallies
- Newsletters
- Local and state group activities
- RV travel benefits

See more at  
**WITClub.com**



## Grand National Rally

Each year, thousands of Winnebago owners descend upon Forest City, Iowa. Rally-goers enjoy an unforgettable week reconnecting with friends, taking tours, participating in activities, and more. Join the adventure next July!