

# Georgetown



A BERKSHIRE HATHAWAY COMPANY



**378 XL with Thunder interior**



**350 Exterior with Midnight full body paint**

**With the Georgetown XL it's about choices. To compliment our six floor plans, we have an abundance of other options. These include six exterior options, numerous interior decors and a variety of choices you can make to personalize your unit.**

**The XL model 378 (pictured in Thunder with the Onyx countertop) is a unit that offers you luxurious living. With a flatscreen TV, fireplace and abundant seating the salon area is great for relaxing conversation or catching up on your favorite shows. The free standing dinette is a great way to enjoy a delicious meal prepared in the 378's gourmet kitchen.**



**378 XL Kitchen with Onyx countertop**



**The innovative spatial design of the Georgetown XL 378 offers the choice of wide open spaces or total privacy.**

**The galley is situated behind the living area in the classic triangle shape, providing the owners a chance to interact with guests or watch TV while preparing refreshments in the fully equipped kitchen. The kitchen is designed to be extremely functional and stylish with it's high end appliances, professionally designed layout and upscale touches like the hand laid tile backsplash.**

**Round out this great model with a professionally designed bedroom featuring numerous storage areas and a standard 32" LCD/HD TV.**

**Georgetown gives you a true home on the road.**





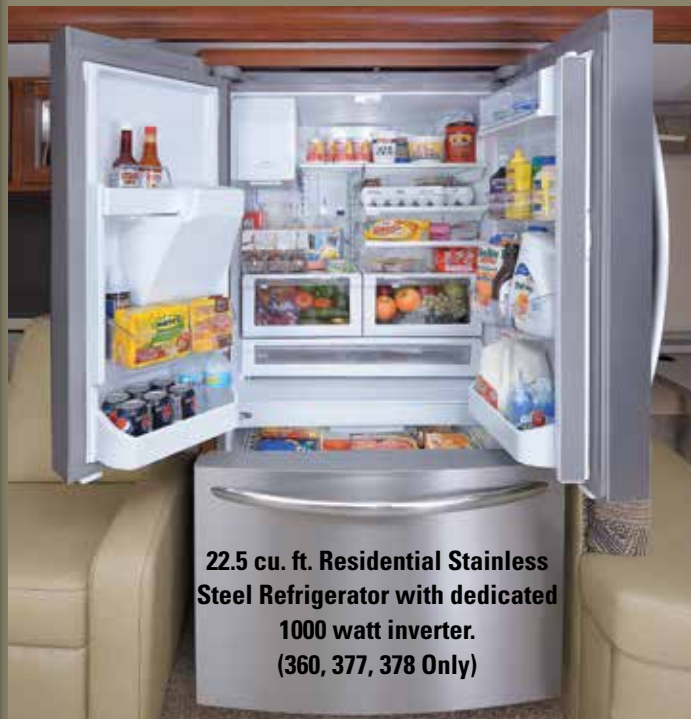
**377 XL with optional porcelain tile**

Georgetown XL by Forest River equips you with everything for your travels except the destination. With six thoughtfully designed floor plans to choose from, the engineering and interior design team have carefully constructed each of the floor plans to flow effortlessly, bringing you maximum comfort and enjoyment.

The Georgetown XL model 377 (pictured with the optional Black Diamond Package) is the epitome of true comfort on the road. The salon area is wide open and inviting, a fireplace, a 40" LCD/HD TV and plenty of room to stretch out.

The kitchen features a 30" over the range microwave oven, solid surface countertops, stainless steel appliances, three burners and 22" oven with flush solid surface covers, a countertop extension and abundant cabinet storage.

The Georgetown XL incorporates a new dynamic front cap with a panoramic view second to none. Add in a stunning paint package and you have the most distinctive gas coach in the marketplace. 84" Interior headroom, and beds 80" in length are other standard features on the XL.



**22.5 cu. ft. Residential Stainless Steel Refrigerator with dedicated 1000 watt inverter. (360, 377, 378 Only)**



**377 Exterior with Parfait Full Body Paint**



**377 Bath storage**

# Georgetown XL

## DECOR OPTIONS

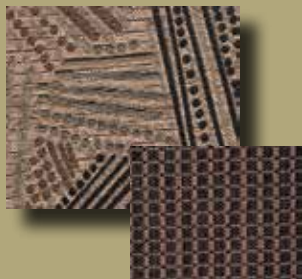
**Khaki**



**Shadow**



**Latte**



**Thunder**



**Hartford Cherry**



## XL COUNTERTOP OPTIONS BY LG



**CARAMEL**



**ONYX**

## FULL BODY PAINT OPTIONS



**PARFAIT**



**ESPRESSO**



**MIDNIGHT**



**FIRE MIST**



**CREME BRULEE**



# STANDARDS AND OPTIONS

## EXTERIOR

- Seamless Wrap Over Laminated Fiberglass Roof
- Full Body paint with Double Clear Coat and Diamond Shield
- Side-Hinge Insulated Baggage Doors
- Rotocast One-Piece Storage Compartments
- Color Side Cameras
- Cable TV and Phone Jacks
- One-Piece Windshield
- LED Clearance and Tailights
- 2 Coach Batteries
- Heated Remote Mirrors
- Triple Entrance Step – Electric
- Hitch 5000 LB.
- Automatic Hydraulic Leveling Jacks
- Rear Ladder
- Mud Flaps
- Outside Shower
- Slideout Room Awning(s)
- Power Main Awning
- 30" Entrance Door
- Remote Heated Mirrors
- TV Antenna with Booster
- 22.5" Tires with Polished Aluminum Wheels

## STRUCTURAL

- Insulated, Formed One-Piece Baggage Doors
- 3" Laminated, Steel Framed Floor with Ducted Heating
- Laminated Aluminum Framed Sidewalls, Roof (Including All Openings)
- Under Floor Steel Truss System

## DRIVER/PASSENGER AREA

- Soft Touch Driver/Passenger Reclining Swivel Bucket Seats
- Auxiliary Start Switch
- Defroster Fans
- Power Front Sun Visor and Manual Side Shades
- Driver/Passenger LED Map Lights
- Soft Touch Vinyl Ceiling
- Optional Driver 6-Way Power Seat
- I.C.C. Flash
- Radio – Single CD AM/FM
- Radio Power Selector Switch
- Rear Vision Camera with Monitor & Audio
- Color Side Cameras

## LIGHTING/DINING/GALLEY

- 22.5' cu. ft. Stainless Steel Residential Refrigerator w/ Dedicated Inverter (Standard Models 360, 377, 378)
- 30" OTR Stainless Steel Microwave
- Hand Laid Tile Backsplash
- Stainless Steel Oven with Sealed Burners
- LG® Solid Surface Kitchen Countertop
- Under Mount Stainless Steel Sink With Flush Solid Surface Covers
- High Rise Faucet with Pull-Out Sprayer
- Flush Mount Solid Surface Range Covers
- Flush Mount LED Ceiling and Accent Lighting
- Carpet Free Step Well
- Satellite Prep
- Slide Out Pantry (W/A)
- 32" LCD HD TV with Home Theater (40" Standard Models 360, 377, 378)
- Euro Recliner with Ottoman (Opt.) (Std. 360, 378)
- Soft Touch Leatherette Hide-A-Bed Sofa
- Dream Dinette (where applicable)

## BATH

- 10 Gallon Gas/Electric Water Heater with DSI
- Vessel Sink(s)
- Black Water Tank Flush System
- Dual Control Shower Faucet with Flex Head
- Linoleum In Bathroom Area
- Medicine Cabinet
- Porcelain Toilet With Foot Flush
- Shower Skylight
- Towel Bar
- Washer Dryer Prep Std. (360, 377, 378)
- One-Piece Fiberglass Shower with Integrated Seat

## BEDROOM

- 13.5K Air Conditioner In The Bedroom
- 60" X 80" Island Queen Bed With Bedspread, Headboard, Pillow Shams And Storage Below (72 X 80 King Bed Models 337, 360)
- Radius Corner Mattress and Bed Base
- 32" LCD/HD Bedroom TV (Select Models)

## SAFETY

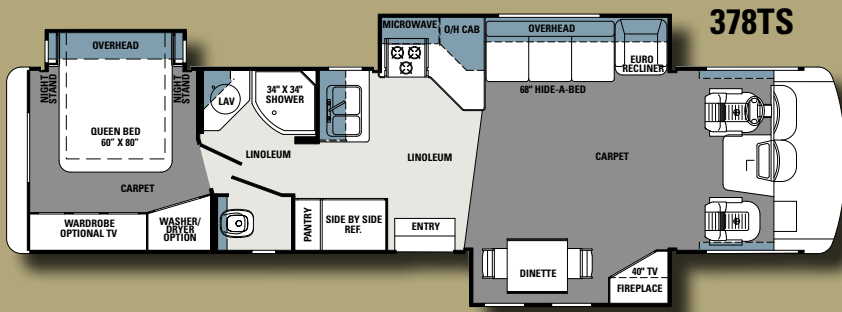
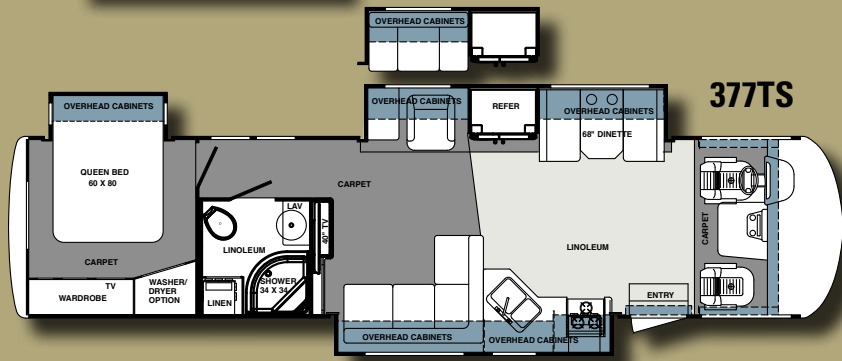
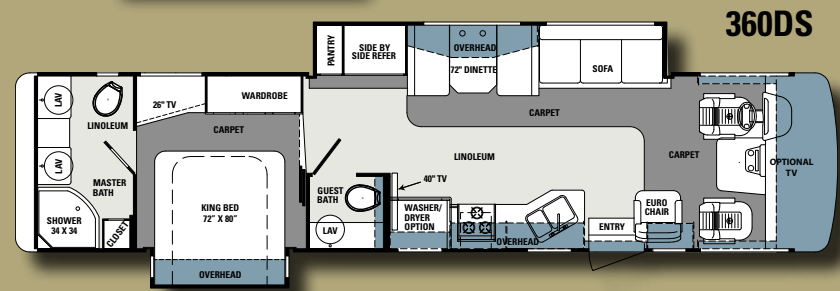
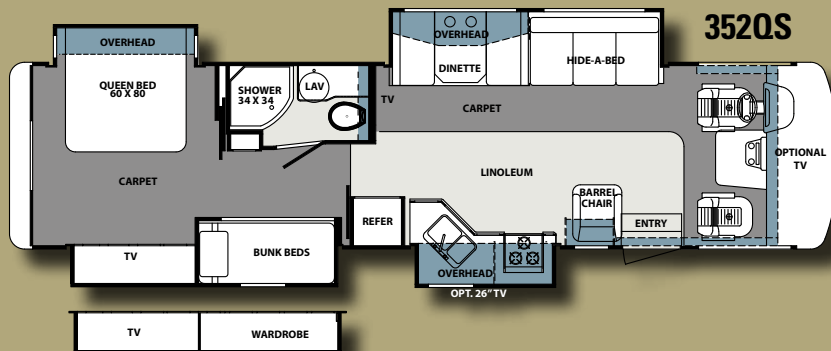
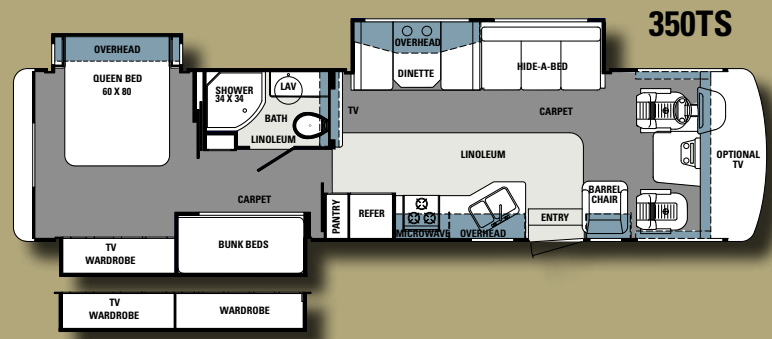
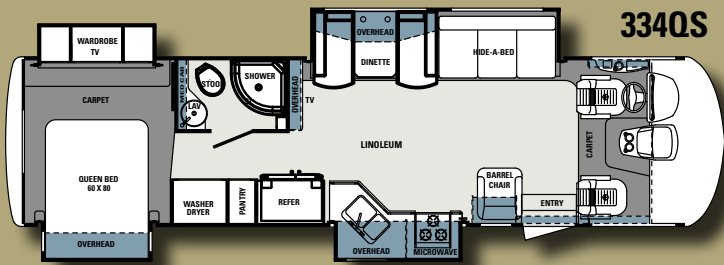
- 110V GFI Protected Circuit (Kitchen, Bath, Exterior)
- Automatic Transfer Switch
- Carbon Monoxide Detector
- Exit Window
- LPG Detector
- Smoke Alarm
- 3-Point Seat Belts
- Recess Mounted Fire Extinguisher (Inside Entry Door)

## WATER/HEATING/ VENTILATION/ POWER

- 50 Amp 120V Distribution Panel and Cord
- 70 Amp 12V Power Converter
- Fantastic Vent In Kitchen
- Arctic Package
- Washer/Dryer Prep (Std. 360, 377, 378)
- Water Filtration System (1 Micron)
- 35,000 BTU Furnace
- Models 352, 377 and 378, Two Furnaces (35,000 & 20,000 BTU)
- Electric Battery Disconnect
- Generator – 5.5 Onan (Std.)
- Power Ceiling Fan In Bath
- Roof A/C – 13.5 BTU Ducted – Front and Rear

## POPULAR OPTIONS

- 15K Air Conditioner In The Front
- Washer/Dryer (N/A 350, 352)
- Air Conditioner Heat Strip(s) (N/A Low Profile A/C(s))
- Convection Microwave IPO Standard Microwave
- Convection Microwave and Cooktop IPO Standard Microwave and Oven
- Porcelain Tile
- Free Standing Dinette with 4 Chairs (Std. On 378)
- Low Profile Air Conditioner
- Roller Shades
- Euro Recliner IPO Barrel Chair (Std. 360, 378)
- Power Drivers Seat
- Drivers Side Door Available On All Models Except 337
- GPS/Sirius XM Satellite Radio



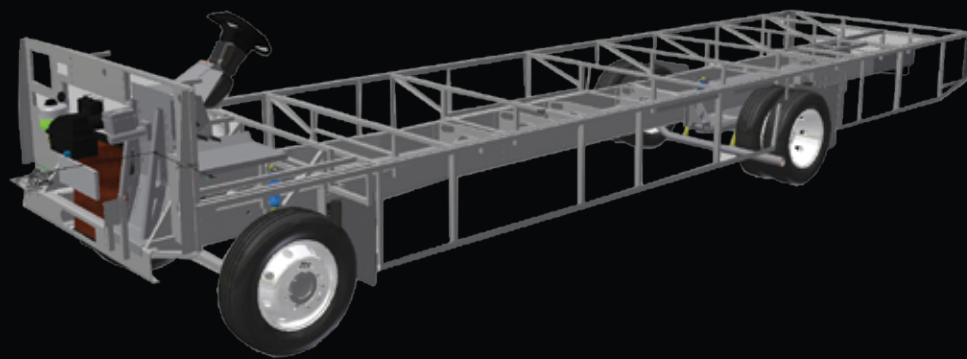
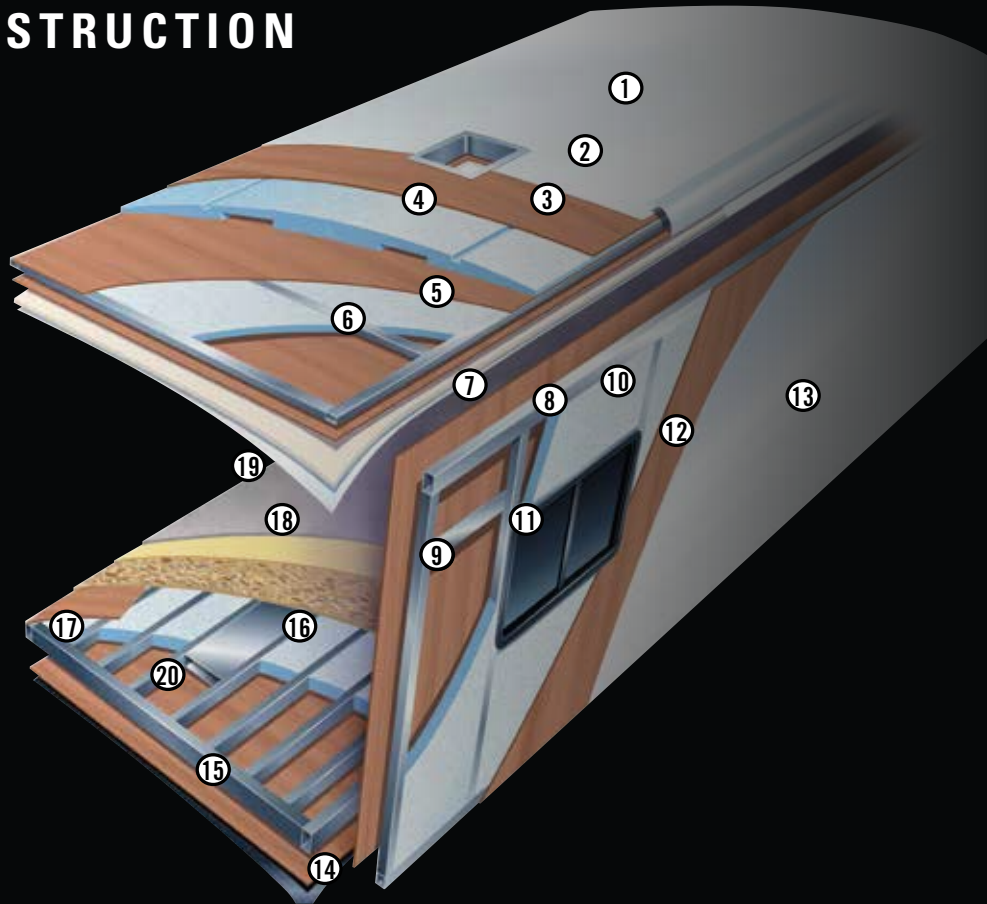
**DIMENSIONS & CAPACITIES**

MODEL	334QS	350TS	352QS	360DS	377TS	378TS
GCWR (lb.)	30000	30000	30000	30000	30000	30000
GVWR (lb.)	24000	24000	24000	24000	24000	24000
*Cargo Carrying Cap. (lb.)	4061	3850	3370	3730	2980	3760
Wheelbase	208"	228"	228"	242"	242"	242"
Fuel Capacity (gal.)	80	80	80	80	80	80
Tire Size	235/80R22.5	255/80R22.5	255/80R22.5	255/80R22.5	255/80R22.5	255/80R22.5
Interior Height	84"	84"	84"	84"	84"	84"
Interior Width	95 1/2"	95 1/2"	95 1/2"	95 1/2"	95 1/2"	95 1/2"
Overall Height w/ AC	12' 8"	12' 8"	12' 8"	12' 8"	12' 8"	12' 8"
Overall Length	34' 11"	36' 2"	36' 8"	37' 11"	37' 11"	37' 4"
Overall Width	101"	101"	101"	101"	101"	101"
Exterior Storage (cu. ft.)	172	173	173	197	197	198
Fresh Water (gal.)	65	65	65	65	65	65
Black Water (gal.)	41	41	41	82	41	41
Grey Water (gal.)	41	41	41	82	41	41
LP Tank (gal.)	24	24	24	24	24	24
Water Heater (gal.)	10	10	10	10	10	10
Furnace (b.t.u.)	20k & 20k	35k	35k & 20k	35k	35k & 20k	35k & 20k
Patio Awning	20'	14'	15'	17'	20'	20'

\*with full gas tank and LP bottles Ford (22,000lb. Models Only)

Approximate dry weight can be obtained by subtracting the CCC from the GVWR, which may vary by options.

# GEORGETOWN XL CONSTRUCTION



## CONSTRUCTION SPECIFICATIONS

### MULTI-LAYERED LAMINATED ROOF SYSTEM

1. Seamless wrap over fiberglass roof
2. Luan Decking
3. Block foam insulation
4. Dual A/C Ducts
5. Tubular aluminum framing
6. Luan

### 2-INCH VACUUM-BOND LAMINATED SIDEWALLS

7. Decorative interior wall board
8. Electro-galvanized sheet metal backers
9. Tubular aluminum framing
10. Block foam insulation
11. All sidewall openings framed in aluminum
12. Luan
13. Smooth gelcoat fiberglass exterior

### 3-INCH VACUUM-BOND LAMINATED FLOOR SYSTEM

14. Fiberglass reinforced vinyl vapor barrier
15. Luan
16. Block foam insulation
17. Virtually seamless floor decking
18. Thick padding
19. Durable carpet
20. 2.5" Steel Framing





Forest River, Inc. encourages our customers to purchase their Forest River products from a local dealership whenever possible for the following reasons:

It is the goal of Forest River, Inc. that all of our RV owners fully enjoy the RV experience and that customer satisfaction meets or exceeds their expectations!

- 1) Forest River, Inc. dealers are independently owned and operated businesses so priority service and scheduling is at their discretion and is often provided to customers that purchased their unit at that dealership.
- 2) Purchasing locally allows customers to establish meaningful relationships with a dealer, enhancing the RV experience through assistance with product questions, user tips or RV regulations for your state or country, and much more!
- 3) Canadian customers must meet requirements to bring an RV purchased out of the country to their home. These requirements may involve additional inspections and certifications, taxes and fees. Your local Canadian Dealer is a professional at meeting these requirements.
- 4) Scheduling timely warranty repairs and adjustments through a local dealership provides far greater flexibility and convenience to you, the customer!



#### PRE-DELIVERY INSPECTION FACILITY

20,000 square feet of quality assurance. The bare essentials for a premium product. This state-of-the-art facility gives immediate daily feedback to production for quality assurance in every unit built.

#### 24/7 EMERGENCY ROADSIDE ASSISTANCE

For a worry-free ownership experience

Forest River includes one year of Coach-Net RV Technical & Roadside Assistance with each RV purchase. Whether new to the RV lifestyle or an experienced RV enthusiast, Forest River owners have 24/7 access to technical, operational and emergency road service coverage throughout the US & Canada. Coach-Net's fast, dependable service is just a phone call away.

### Coach-Net<sup>®</sup>

RV Technical & Roadside Assistance



#### Learn More

Scan this barcode using a QR Reader on your smart phone to learn more about Forest River.



A Berkshire Hathaway company.

Forest River, Inc.

58277 S.R. 19 South • Elkhart, IN 46517

Phone: 574.296.7700 Fax: 574.295.8749

[www.forestriverinc.com](http://www.forestriverinc.com)

[www.forestriveraccessories.com](http://www.forestriveraccessories.com)