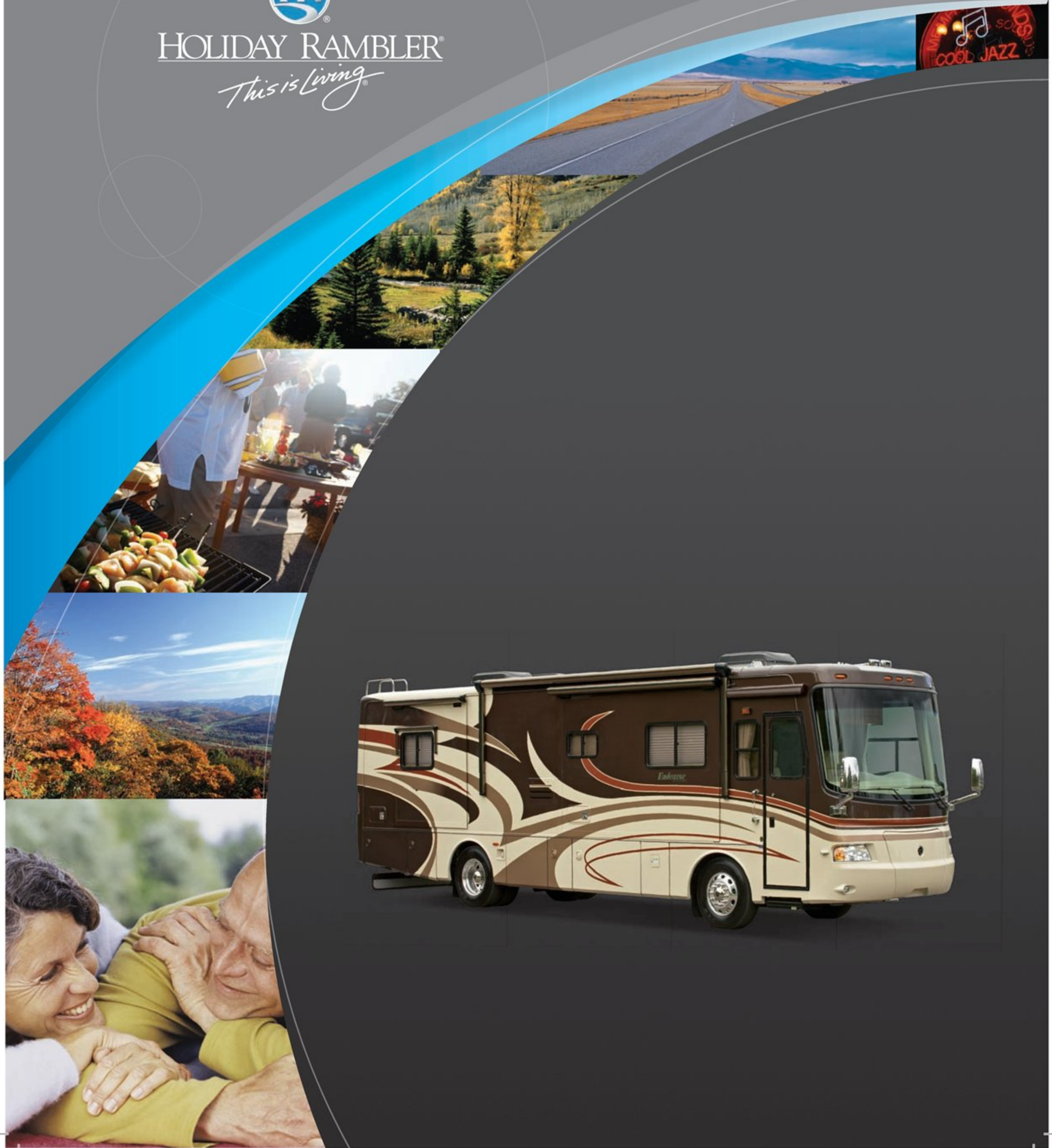


ENDEAVOR®  
2008



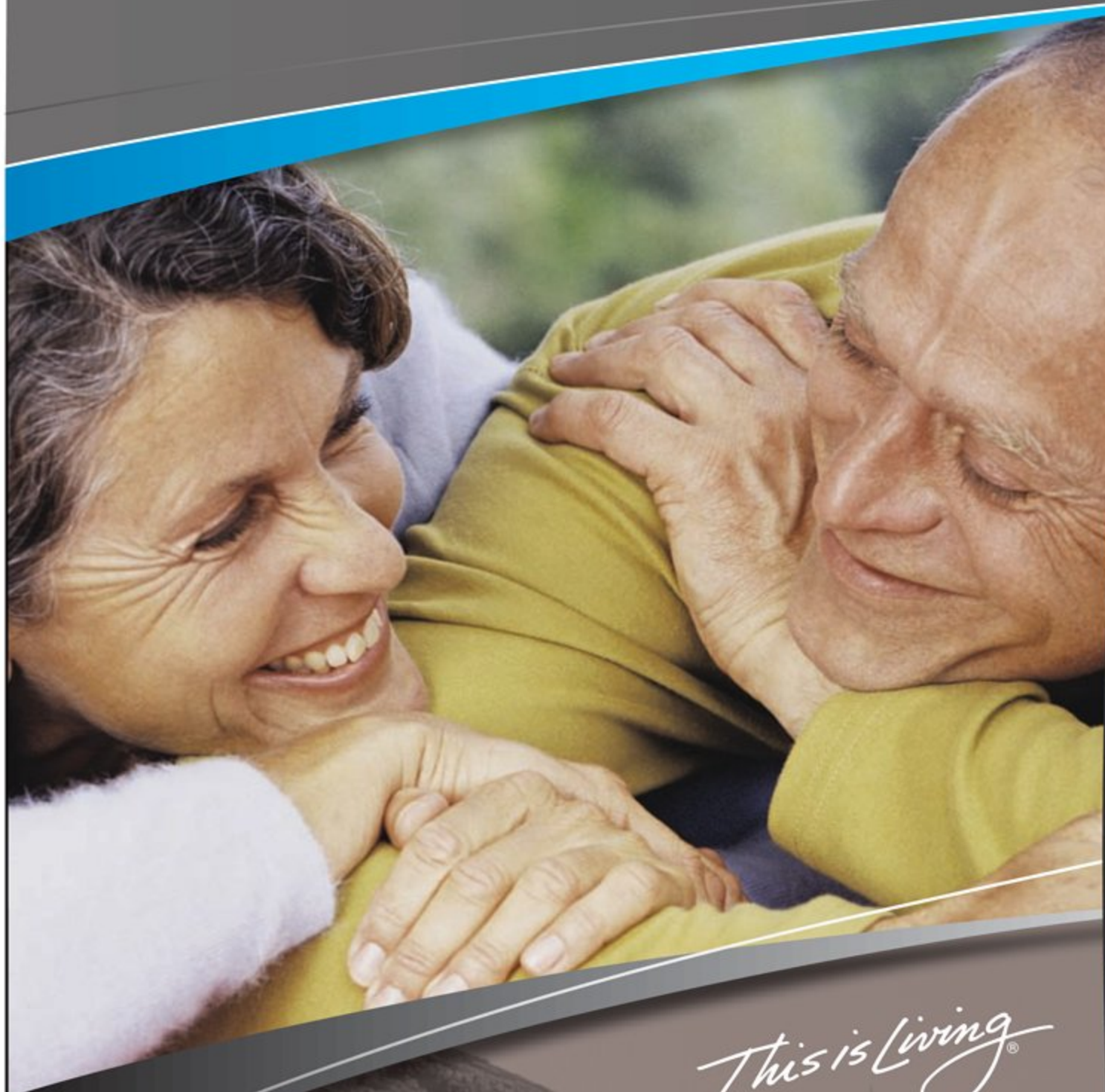
HOLIDAY RAMBLER®

*This is Living®*





 ENDEAVOR®



*This is Living®*







40PDQ | TRINITY | NEWPORT CHERRY

## START FRESH WITH ENDEAVOR.

Are you ready to try something new? We suggest the 2008 Endeavor. Designed with all the latest features and amenities, Endeavor brings a fresh approach to life on the road. Flatscreen TVs, digital satellite systems, washer/dryer combos, stainless steel appliances, solar panel wiring — these are some of the latest offerings from Endeavor. Then there's its up-to-the-minute looks featuring deluxe full-body paint, new front molded fiberglass caps and polished aluminum wheels. Not

so easy to see are the high-tech mechanisms — the indisputable Roadmaster® chassis, cushioned air glide suspension, automatic traction control — designed to give Endeavor a smooth ride. Inside, you'll find all the latest looks, including stylish furniture available in leather, decorative lighting and contemporary color choices. Discover more of what your future could look like with the 2008 Endeavor.





40PDQ | TRINITY | NEWPORT CHERRY



*This is Living®*







40SKQ | DECADENCE | NEWPORT CHERRY

## ENJOY TASTY NEW TREATS.

With all the latest conveniences and a smart layout, Endeavor makes cooking on the road easier than ever. No more worries about storage. Endeavor's plentiful cabinets have a place for everything you need. Plus, they look great with new profile doors and oil rubbed bronze hardware. You also have ample space for food prep, especially with the handy pullout countertop extension with drawer. Little details like strategically placed electrical outlets, a spice rack and under-cabinet lighting make a big difference, too. We've even

found a way to make cooking faster with a microwave/convection oven combination plus a high-output cooktop. After enjoying dinner on the freestanding dinette, cleanup is a breeze. Load everything up in the generous kitchen sink with the convenient single lever faucet and pullout sprayer. Spills easily wipe off the ceramic tile, polished countertops and decorative backsplash. And, you can make a clean sweep with the optional central vacuum system. Then, you're ready for dessert out on the patio.









40SKQ | DECADENCE | NEWPORT CHERRY

## EXPERIENCE A NEW LEVEL OF TRANQUILITY.

As you settle into the comfort of Endeavor, you can feel the stress and strain of your old life falling away. It's not magic but a well-devised plan to surround you with comfort. The private bath provides a bit of TLC, with a generous shower and large 10-gallon water heater for extra long, hot showers. Afterwards, curl up on the queen-size bed. Or, up the comfort level a few notches by choosing a king-size bed with a select-comfort mattress. Let yourself drift peacefully off to sleep under

the comforting breeze of an optional ceiling fan, or unwind with some entertainment. This year we've added a 20" television and you can add an optional DVD player. The bedroom isn't the only place to relax. The living area is filled with comfortable furniture, a home theater system and opulent extras, including a working fireplace. Just imagine the peacefulness of curling up in front of a warm, romantic fire and planning your next carefree day. Perfect.



HR ENDEAVOR®



40SKQ | DECADENCE | NEWPORT CHERRY



PANAVIEW™

1-PIECE WINDSHIELD

*This is Living®*





40PDQ | TRINITY | NEWPORT CHERRY

## NEW DESTINATIONS AWAIT.

Get ready to take off for sights unseen. Because once you feel the power of Endeavor's Cummins® 400 HP engine, you'll want to drive as far as you can. The newly styled automotive dash with its easy-to-read gauges welcomes you aboard as you become acquainted with all the niceties designed to make driving a pleasure — like the Ultraleather™ six-way pilot and co-pilot seats. While you're driving, you'll appreciate the Panaview™ 1-piece windshield and the in-dash AM/FM/CD stereo

radio with optional 10-disk CD changer that helps the hours sail by. A standard weather band keeps you informed, while the optional GPS navigation system keeps you on track. Unpacking won't be a problem with the pass-through storage compartment that has the option of a slide-out tray. You can even add some music to the loading and unloading process with the optional exterior entertainment center. See? Everything is more fun with the Endeavor.

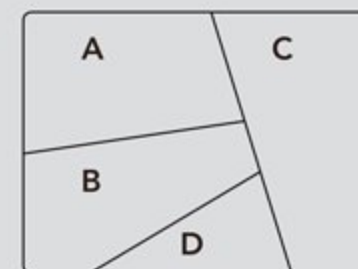




## OUT WITH THE OLD. IN WITH THE NEW.

The 2008 Endeavor offers great new looks with revised exterior graphics featuring four-color fades. The interior decors are just as modern, with fanciful fabric choices designed to coordinate beautifully with the wood choices. So take your pick. And make your new 2008 Endeavor truly your own.

- A. BEDSPREAD
- B. SOFA
- C. ACCENT
- D. CARPET



NEWPORT CHERRY



CHAMPAGNE SELECT

## BETTER STAIN PROTECTION



Manufactured in, not added on. For added protection against stains, soil repellent is applied to virtually all upholstery fabric during the finishing process for superior coverage.\*

\*Brand and application of upholstery fabric protection may vary depending on date recreational vehicle was manufactured.

## HOLIDAYRAMBLER.COM

Log on to our website anytime, night or day. It's your link to everything Holiday Rambler, including product news and updates, club events, dealer and service center info and much more. Take it for a test drive today.



**ASSISTANCE**

SALES • TECH • ROADSIDE



## WE'RE HERE. ANYTIME, EVERY TIME.

- Reach us anytime — literally — via our live customer support line.
- Drive in to one of our 350 Service Centers.
- Enjoy the first year free when you enroll in our Owner Advantage Roadside Assistance Program.
- See where it all begins with a tour of one of our facilities in Indiana or Oregon. Call 1-800-650-7337 or 1-800-634-0855 to find out more.

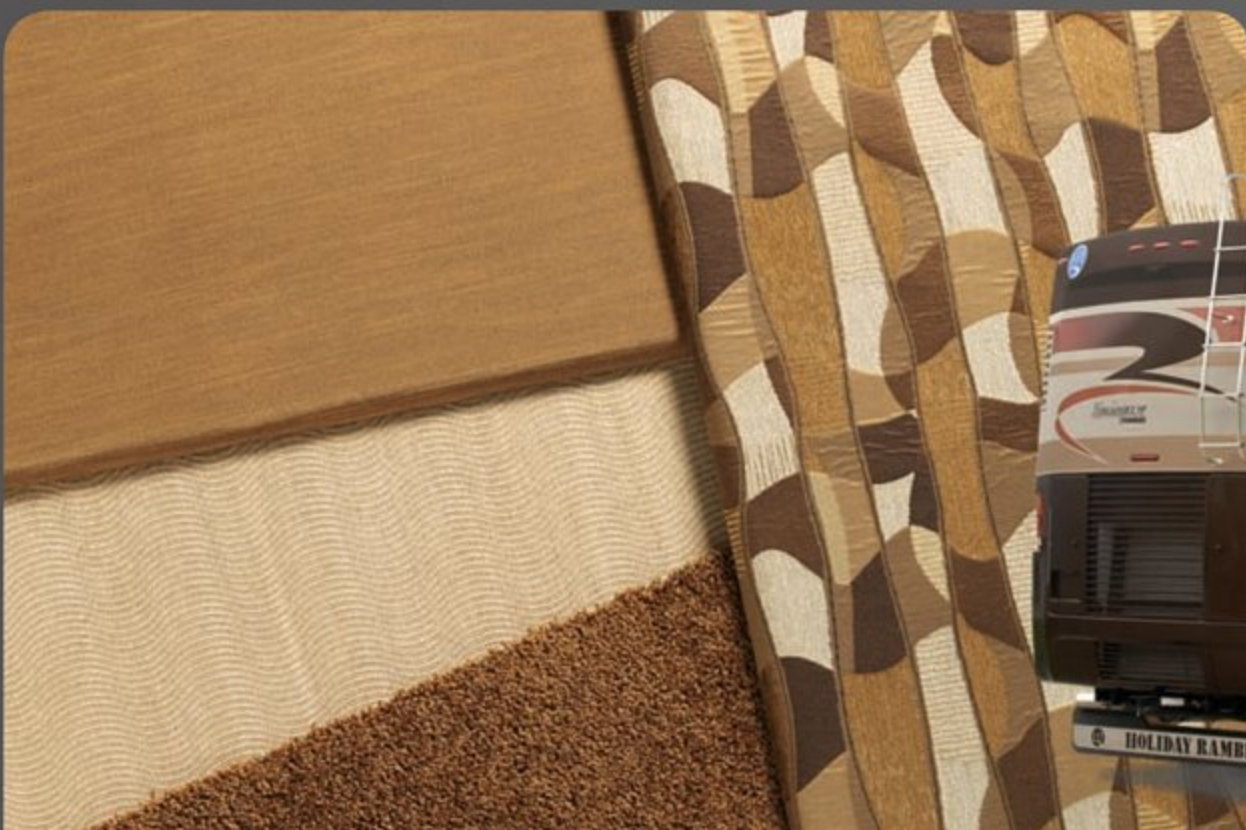




DECADENCE



TRINITY



COPPER RIDGE





## ROADMASTER R-SERIES CHASSIS

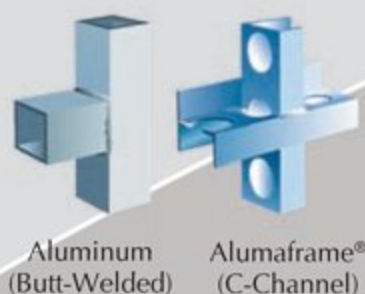
At the heart of the 2008 Endeavor® is the Roadmaster Raised Rail RR8R-Series chassis. Designed for the high performance standards of a luxury motorcoach, the chassis is custom-built to the exact specifications of each floorplan — giving you an unbeatable ride and superior handling along with many innovative features. We invite you to take a few minutes and discover all the ways Roadmaster offers you the very best in safety, reliability, comfort and convenience.



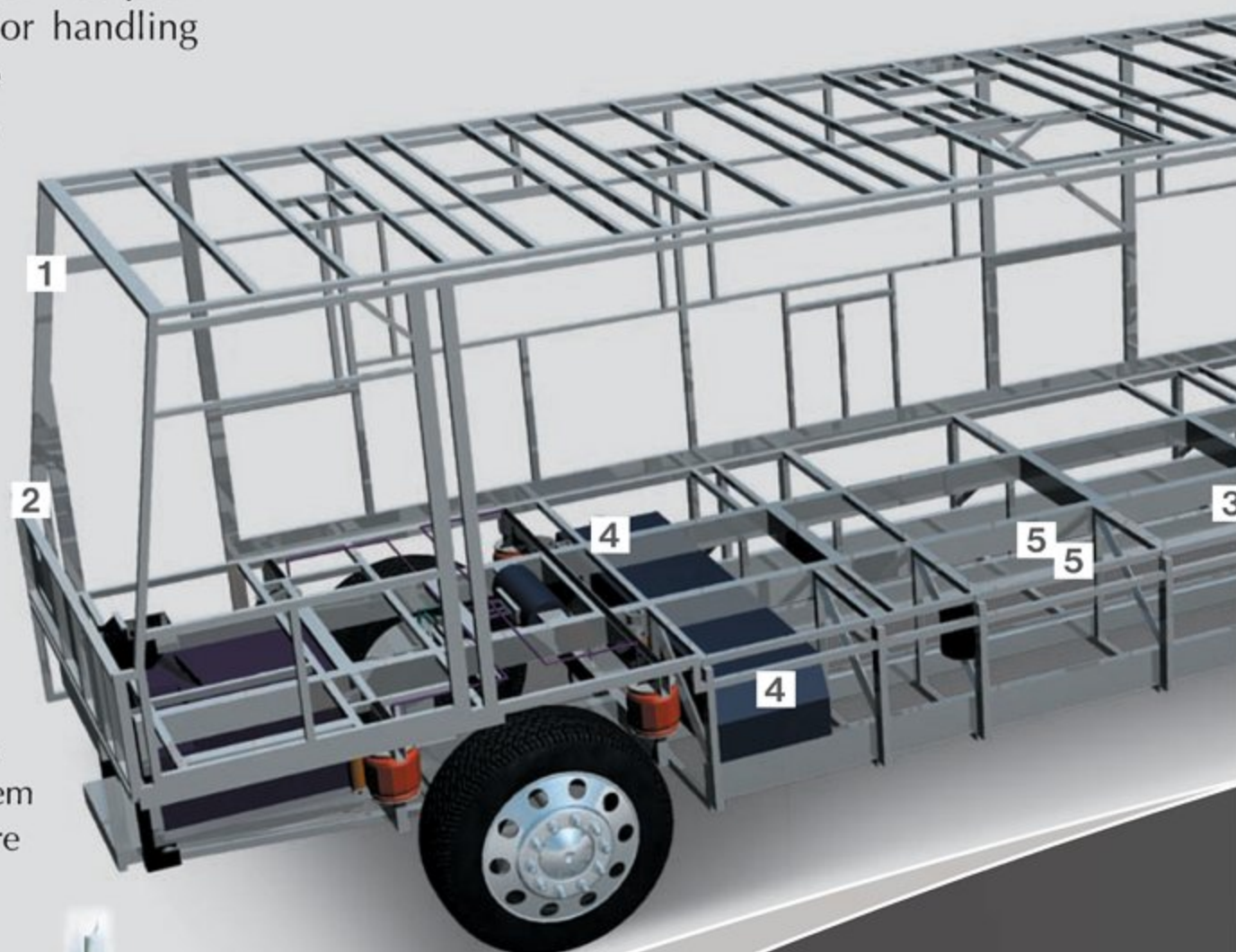
ALUMAFRAME®  
CONSTRUCTION  
SINCE 1966:



The Endeavor® features Holiday Rambler's exclusive Alumaframe® Superstructure. Our revolutionary system of aluminum C-Channel crossmembers runs the entire length of the unit, with double-welded intersections for added strength. This rigid design is both lighter and sturdier than tubular aluminum frames — and much more reliable than butt-welded or screwed joint designs. From dirt roads to potholes, you can count on Alumaframe® to handle the relentless stresses of the road and provide superior structural integrity for many years to come.



- 1** A steel cage cockpit gives the Roadmaster chassis incomparable strength and safety in the front of the coach.
- 2** Every Roadmaster chassis features a steel firewall for added protection in the cockpit.
- 3** The main rails feature an exclusive raised rail design which provides for larger full pass-through storage bays with flush floors. Other highlights include a 3/8" thick frame rail — compared to the 1/4" of other manufacturers — and a stacked aluminum intercooler and radiator for optimum heat transfer and cooling.



### 9-LAYER ROOF CONSTRUCTION (top to bottom)

- One-piece peaked fiberglass roof
- Luaun backing
- Thick, tapered bead foam insulation
- Aluminum double I-beam superstructure filled with fiberglass insulation
- Vapor barrier
- Structure foam: thermal insulative barrier
- 1/2" bead foam insulation
- Foam padding for extra insulation
- Padded vinyl ceiling



**4** Dual fuel fill allows you to fill the tank from either side of the coach, for greater convenience and flexibility at the pump.

**5** Truss System with Rust Inhibitor: This steel truss system is engineered as part of the chassis and provides outstanding strength and rigidity plus pass-through storage. In addition, the structure is pre-primed and coated with a rust-inhibiting paint.

**6** Eight outboard-mounted air bags work in conjunction with eight gas-powered shock absorbers to prevent road trauma from ever reaching the coach.

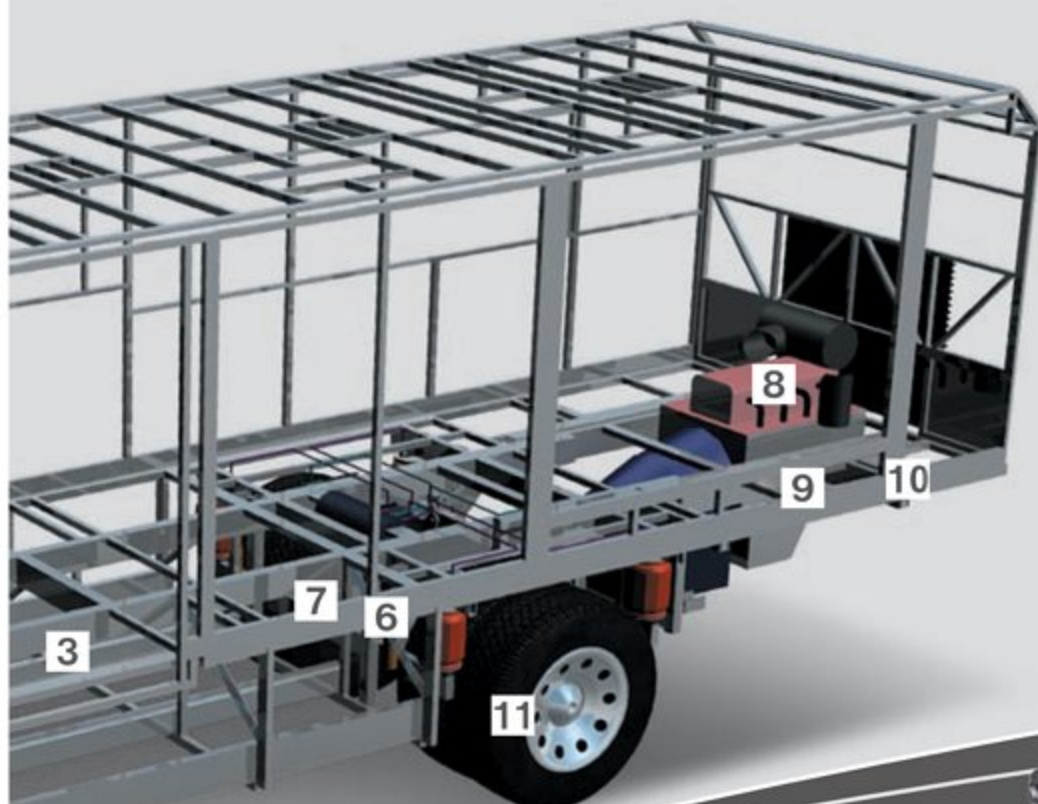
**7** Monitored leveling sensors continually adjust the air pressure at each axle to maintain a level ride and eliminate nosediving, weight transfer, and floating on curved roads. This system also stabilizes the coach on uneven surfaces.

**8** Cummins® ISL 400 Diesel Engine: The Endeavor features a gutsy standard Cummins® ISL 400 diesel engine with Allison® 3000 MH 6-speed World Transmission and electronic shifter.

**9** Engine Mounting: The three-point engine mounting system lowers the coach's center of gravity and reduces the amount of vibration that reaches the coach. The mounting also makes the engine easier to service.

**10** A 10,000 lb. tow hitch rating is the highest in its class.

**11** Automatic Traction Control (ATC) eliminates wheel slippage in slick conditions and heightens control. The Anti-Lock Braking system (ABS) gives you superior stopping power, especially on steep grades. Together, these sophisticated systems offer the very best safety on the road.



## SLIDE-OUT CONSTRUCTION:

When you purchase a Holiday Rambler, you can be sure the slide-out boxes are some of the strongest and most reliable you'll find anywhere. They feature our exclusive multi-layer construction to give you maximum insulation and to reduce the chance of warping, twisting or shifting.



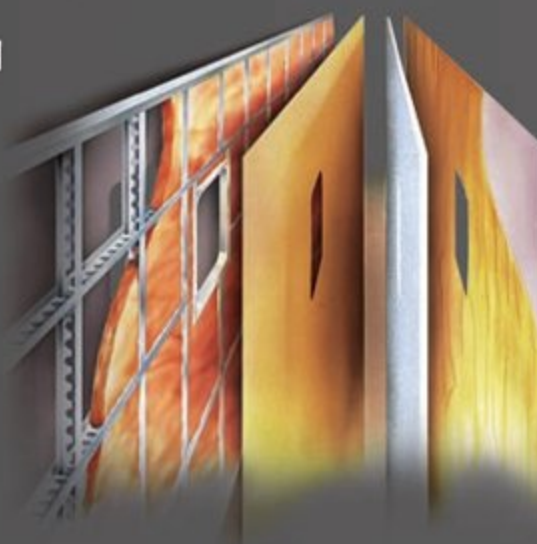
The optional Aladdin™ Junior makes it easy to keep track of many important functions, including engine/transmission temperatures, mileage and much more.



With the GPS option, you're free to explore the middle of nowhere and always know exactly where you are.

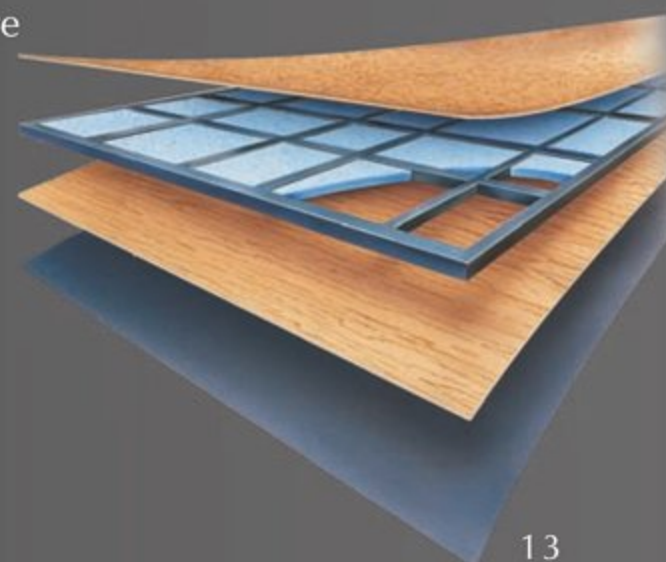
## 5-LAYER SIDEWALL CONSTRUCTION (left to right)

- Gel coat fiberglass
- Interlocking C-Channel filled with 1-1/2" fiberglass insulation glued in place so it doesn't sag or leave spaces uninsulated
- Vapor barrier
- Bead foam saves energy and provides a thermal insulative barrier
- Interior paneling



## 5-LAYER FLOOR CONSTRUCTION (top to bottom)

- Structurwood™
- 1-1/2" x 1-1/2" square tubular frame
- Blue foam
- Luaun
- 3-Ply Backer





### BODY CONSTRUCTION: FEATURES

- Alumaframe® Superstructure
- Steel Cage Cockpit Construction
- Peaked One-Piece Fiberglass Roof with Fiberglass Insulation
- Panaview™ 1-Piece Front Windshield
- Interior Height 84"
- Smooth Gel Coat Fiberglass Exterior Walls
- Front Molded Fiberglass Cap
- Rear Molded Fiberglass Cap with Integrated Air Intake
- Pullout Generator Tray with One-Piece Door
- Electric Flush-Floor Stepwell Cover
- Chrome Dual Head Power Controlled Heated Exterior Mirrors with Turn Indicator Lights
- Side-Hinged Baggage Doors
- One-Piece Polyethylene Pass-Through Storage Compartment
- Slide-Out Battery Tray
- Full-Length Mud Flap
- 3M Film Front Mask
- Deluxe Full-Body Paint
- Wheel Mud Flaps
- Roof Ladder
- Undercoating

### OPTIONS

- Storage Bay Slide-Out Tray (Complete Pass-Through)
- Standard Run Package: 3 Camera Vision System, Solid Surface Kitchen Sink, RV Sani-Con System, Exterior Tank Monitor Gauges, Power Cord Reel, Auto Generator Start

### CHASSIS/ENGINE/SUSPENSION: FEATURES

- Roadmaster Raised Rail RR8R-Series Chassis
- Cummins® 400 HP ISL Engine with Allison® 3000 MH 6-Speed World Transmission and Electronic Shifter
- Torque (@ 1,300 RPM) 1,200 lbs./ft. Max. Net
- Engine Displacement 540"/8.9L"
- Aluminum Rear-Mounted Radiator with CAC Cooler
- Dual Fuel Fill
- 160 Amp Alternator
- Rear Axle Ratio: 4.30:1
- Tires: 275/80R/22.5
- Prewire for Supplemental Braking System
- Polished Aluminum Wheels
- Cushion Air Glide Suspension with Eight Outboard-Mounted Air Bags and Eight Shock Absorbers
- Anti-Lock Braking System with Full Air Brakes
- Automatic Traction Control
- Exhaust Brake
- Auto Slack Adjusters on Brakes
- Engine Block Heater
- Automatic Leveling System (3 Point)
- 10,000 Lb. Hitch Receiver with Dual Connector 4-Pin or 7-Pin

### COCKPIT: FEATURES

- Automotive Dash with Brushed Gray Instrumentation Panel
- In-Dash AM/FM/CD Stereo Radio with Sirius-Ready Compatibility and Weather Band
- Power Sunvisors with Integrated Motor
- Pilot and Co-Pilot Pull-Down Sunshades
- Adjustable Brake and Accelerator Pedals
- Color Rear Vision System with Audio and Adjustable Camera
- Lighted VIP Smartwheel® Multiplexed Steering Wheel with Controls for Windshield Wipers, ICC and Cruise Control
- Intermittent Windshield Wipers
- Audible Turn Signals
- Roof-Mounted Air Horn
- CB Prep
- Ultraleather™ Six-Way Power Pilot and Co-Pilot Seat with Power Footrest
- Power Steering
- Color-Coordinated Carpeted Floor Mats

### OPTIONS

- 3-Camera Rear Vision System with Audio and Adjustable Center Camera
- GPS Navigation System
- Sirius Satellite Radio System (Requires Subscription)
- Interior Solar Privacy Sunscreens
- Aladdin™ Jr. Coach Monitoring System
- 10-Disc CD Changer
- Auxiliary Blower



**APPLIANCES AND ACCESSORIES: FEATURES**

- Large Four-Door Refrigerator with Ice Maker
- High-Output 3-Sealed Burner Cooktop without Oven
- Removable Solid Surface Range Covers
- Microwave/Convection Oven
- 32" Flatscreen LCD TV in Front Cockpit Overhead (N/A: 40SKQ)
- 37" Flatscreen LCD TV in Living Area Hutch (Replaces Front Cockpit TV) (40SKQ)
- 20" LCD Color TV with Remote Control in Bedroom
- Home Theater System
- Exterior Hook-Ups for DSS Dish and Cable

- Digital Satellite System - Prep
- Interior Cable TV Hook-Up and Telephone Jacks
- Washer/Dryer Prep

**OPTIONS**

- High-Output 3-Sealed-Burner Range with Oven
- Dometic Sidewise 14 Cu. Ft. 2-Way Refrigerator with Ice Dispenser in the Door (40SKQ, 40PDQ)

- Stainless Steel Package (Includes Stainless Steel Refrigerator and Microwave)
- Central Vacuum
- Combination Washer/Dryer
- Bedroom DVD Player
- Semi-Automatic Digital Satellite Dish
- In-Motion Digital Satellite Dish (Does Not Include Receiver)
- Fireplace with Hardwood Frame (40SKQ)
- Exterior Entertainment Center (26" LCD/AM/FM/CD Radio with Two Speakers) (N/A: 40SKQ)

**INTERIOR: FEATURES**

- Raised Panel Hardwood Cabinet Doors
- Hardwood Cabinet End Panels
- Refrigerator Raised Panel Hardwood Inserts
- Heavy-Duty Ball Bearing Drawer Guides
- Metal Interior Grab Handle on Dash at Entry Door
- Oil Rubbed Bronze Cabinetry Hardware and Bath Accessories
- Polished Radius Solid Surface Kitchen Countertop with Stainless Steel Sink with Two Sink Covers
- Pullout Countertop Extension with Drawer and Corian® Top (40SFT, 40PDQ)
- Kitchen Galley Backsplash; Ceramic Tile with Decorative Glass Accents

- Polished Corian® Countertops Throughout
- Solid Surface Bathroom Countertop with Integrated Sink
- Ceramic Tile in Kitchen, Bath and Entry
- Designer Carpeting in Living Area and Bedroom
- Hardwood Slide-Out Fascia with Decorative Center Block
- Decorative Window Boxes throughout Coach
- Oversized Rear Closet Wardrobe with Mirrored Doors and Frames in Satin Nickel
- Decorative Glass Doors for Living Room Hutch Cabinets (40SKQ)

- Day/Night Pleated Blackout Shades in Living Area and Bedroom; Mini Blinds in Kitchen and Private Bath
- Soil Repellant Protection on Fabric

**OPTIONS**

- Decor: Decadence, Trinity, Copper Ridge
- Wood Choice: Newport Cherry and Champagne Select
- Full-Tile Living Room
- Solid Surface Kitchen Sink

**FURNITURE: FEATURES**

- Freestanding Dinette with Full-Length Wall Cabinet and Two Freestanding Chairs and Two Folding Chairs (N/A: 40SFT)
- Roadside: Fabric Easy Bed Sofa
- Curbside: Fabric Easy Bed Sofa (N/A: 36PDQ)
- Curbside: Fabric Loveseat (36PDQ)
- Queen Bed with Solid Surface Nightstands

**OPTIONS**

- King Bed with One Nightstand (40PDQ)
- Queen Bed Select Comfort Air Mattress
- King Bed Select Comfort Air Mattress (40PDQ)
- Roadside: Fabric Hide-A-Bed with Air Mattress
- Roadside: Ultraleather™ Easy Bed Sofa
- Roadside: Ultraleather™ Hide-A-Bed with Air Mattress
- Roadside Ultraleather™ Sectional Booth Dinette Ensemble (40SKQ)

- Roadside: Wraparound Computer Desk with Ultraleather™ Euro-Recliner (40PDQ)
- Curbside: Ultraleather™ Hide-A-Bed with Air Mattress (40SFT, 40PDQ)
- Curbside: Ultraleather™ Easy Bed Sofa (N/A: 36PDQ)
- Curbside: Ultraleather™ Love Seat Sofa (36PDQ)



### ELECTRICAL SYSTEMS AND LIGHTS: FEATURES

- 50 Amp 12V Distribution Panel and Power Cord
- Energy Management System
- Onan® 8.0kW Quiet Diesel Generator on Manual Slide-Out
- Four 6V Deep Cycle Batteries
- Two 12V Heavy-Duty Chassis Batteries
- Battery Disconnect Switch at Front Door
- Battery Boost Switch in Cockpit
- 2,000-Watt Inverter
- Recessed Docking Lights
- Porch Light and Exterior Step Light on Same Switch
- Lighted Interior Steps
- Lights in Outside Storage Compartments with Switch on Passenger Console and Utility Bay
- 110V Outlet in Outside Storage Compartment
- Underhood Utility Light
- Convenience Center in Hallway
- Decorative Lighting
- Prewire for Solar Panel

#### OPTIONS

- Auto Generator Start
- Solar Panel
- Power Cord Reel

### PLUMBING AND LP SYSTEMS: FEATURES

- Demand Water System and Water Pump
- 10-Gallon LP Gas/Electric Water Heater with Electronic Ignition DSI
- Single Lever Kitchen Faucet with Pullout Sprayer
- Central Water Filtration System
- Water Heater Bypass Valve
- Water Pump Switch in Convenience Center, Kitchen Galley and Service Bay Area
- China Toilet (N/A: 40SKQ)
- Silent Plus China Electronic Toilet (40SKQ)
- Shower inside Wet Bay with Hot/Cold Water
- No-Fuss Flush Holding Tank Rinsing System
- Gravity and Pressurized Water Fill
- One-Piece Round Shower with Reeded Glass Door (40SFT, 40PDQ)
- One-Piece Neo-Angled Shower with Obscured Glass Door (40SKQ)
- One-Piece Rectangular Shower with Obscured Glass Door (36PDQ)
- Satin Nickel Shower Door Frame with Decorative Glass
- Satin Nickel Shower Faucet with Slide Bar and Shut-Off Valve at Shower Head

#### OPTIONS

- RV Sani-Con Tank Drainage System
- Water Hose Reel
- Exterior Tank Monitor Gauge in Wet Bay
- Neo-Angled Bathtub (N/A: 36PDQ)

### HEATING, VENTS AND AIR CONDITIONING: FEATURES

- Dual 13.5M BTU Roof Air Conditioner with Ducted Air, Heat Pumps, and Digital Thermostat Control
- Dual Zone Electronic Ignition Furnaces - 51M BTU (One 31M and One 20M BTU)
- Electronic Dash Air Conditioner/Heat Climate Control System
- Kitchen Powered 12V Attic Fan with Wall Control of Automatic Dome and Fan Power
- 12V Attic Fan in Private Bath with Wall Control of Automatic Dome and Fan Power
- 12V Heater in Wet Bay

#### OPTIONS

- Ceiling Fan in Bedroom (N/A: 36PDQ)
- Dual 15M BTU Roof Air Conditioner with Ducted Air, Heat Pumps, and Digital Thermostat Control



**WINDOWS, DOORS AND AWNINGS: FEATURES**

- Radius Flush-Mounted Dual Pane Safety Glass Dark Tinted Windows
- Front Entry Door with Removable Screen and Anti-Skid Steps
- Keyless Entry (Key Fob Only)
- Automatic Front Door Awning
- Topper Slide-Out Awnings Living Area and Bedroom
- Automatic Patio Awning
- Tinted Skylight in Bathroom with Protecta Glaze
- Window Awnings on All Slide-Out House Windows except Slide-Out Windows under Patio Awning

**SAFETY: FEATURES**

- Fire Extinguisher (10BC)
- Deadbolt Lock on Entrance Door
- 120V GFI Protected Circuit (Kitchen, Bath, Exterior)
- LP Gas Detector
- Smoke Detector
- Carbon Monoxide Detector
- Driver and Passenger Three-Point Seatbelts
- Third Brake Safety Light
- Egress Window(s)

Due to continuous product improvement, please see the website for the latest in standards and options, specifications, and technical data. Go to [www.holidayrambler.com](http://www.holidayrambler.com).

Weights*	36PDQ	40SFT	40SKQ	40PDQ
Gross Vehicle Weight Rating	33,000	33,000	33,000	33,000
Gross Combined Weight Rating*	43,000	43,000	43,000	43,000
Front Gross Axle Weight Rating	13,000	13,000	13,000	13,000
Rear Gross Axle Weight Rating	20,000	20,000	20,000	20,000
Measurements				
Wheelbase	213"	261"	261"	261"
Overall Length	37' 5"	41' 5"	41' 5"	41' 5"
Overall Height	12' 10"	12' 10"	12' 10"	12' 10"
Interior Height	84"	84"	84"	84"
Interior Width	94.5"	94.5"	94.5"	94.5"
Exterior Width	100.5"	100.5"	100.5"	100.5"
Tank Capacities**				
Water Heater	10	10	10	10
Gray Tank	62	62	62	62
Black Tank	40	40	40	40
Fresh Tank	100	100	100	100
Fuel Tank	100	100	100	100
LP Tank***	39	39	39	39

\* Towing capacity is limited by GCWR; your vehicle's towing capacity is the difference between the GCWR and the actual vehicle weight, including all water, fuel, passengers and cargo. Your towed vehicle should be equipped with auxiliary brakes if the weight of the towed vehicle exceeds 1,000 lbs. Consult your owner's manual for further towing information.

\*\* All tank capacities are estimated based upon calculations provided by the tank manufacturers and represent approximate capacities. The actual "usable capacity" may be greater or less than the estimated capacities based upon fabrication and installation of the tanks.

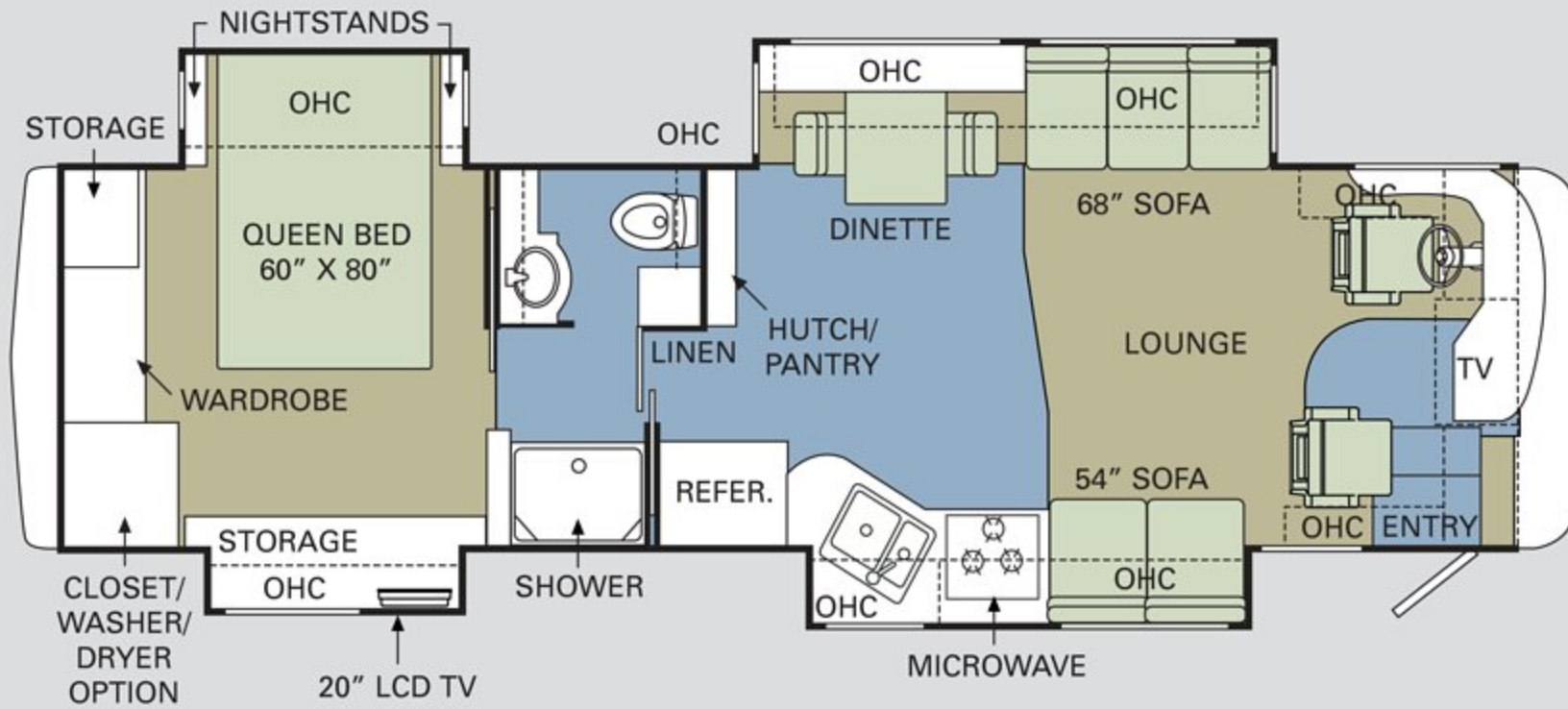
\*\*\* Actual filled LP capacity is 80% of listing due to safety shut-off required on tank.

The actual overall length of the recreational vehicle may differ from that indicated in the brochure due to variances in the manufacturing process and/or installed components. The actual length may be greater or less than that indicated. Due to the large variety of options and floorplan arrangements available to our customers, actual weights for each unit can differ significantly. Holiday Rambler provides a weight sticker on each unit we produce which includes that unit's tank capacities and approximate weight. Consult your local Holiday Rambler dealer for unit availability and further information. The information printed in this brochure reflects product design, fabrication, and component parts at the date of printing. The manufacturer reserves the right, at any time, to make changes in product design or material or component specifications as its sole option, without notice. This includes the substitution of components of a different brand or trade name which will result in comparable performance. All information printed in this brochure is subject to change after the date of printing. Some features shown or mentioned in this brochure are optional and may only be available in selected floorplans. Photographs may show props or decorations that are not standard equipment on Holiday Rambler models. Holiday Rambler, the Holiday Rambler logo and its design, are registered trademarks. All other products and company names are trademarks and/or registered trademarks of their respective holders. While the color of the motorhome's exterior and the interior fabrics depicted in this sales brochure are fair and reasonable depictions, the colors depicted may not be an exact match of the actual colors because of the variances in photo-processing and variances caused by inserting the photographs within the sales brochure. Due to product improvements, changes during the model year and/or transcription errors that may occur, information represented within this brochure may not be accurate at the time of your purchase. If certain information is significant to your purchasing decision, please confirm the information with your dealer prior to submitting your order. Component part and appliance manufacturers issue limited warranties covering those portions of the recreational vehicle not covered by the Limited Warranties issued by Monaco Coach Corporation. To learn which specific component parts and appliances are excluded from the Limited Warranties issued by Monaco Coach Corporation, please contact your selling dealership or Monaco Coach Corporation directly, or review the warranty packet inside the recreational vehicle.

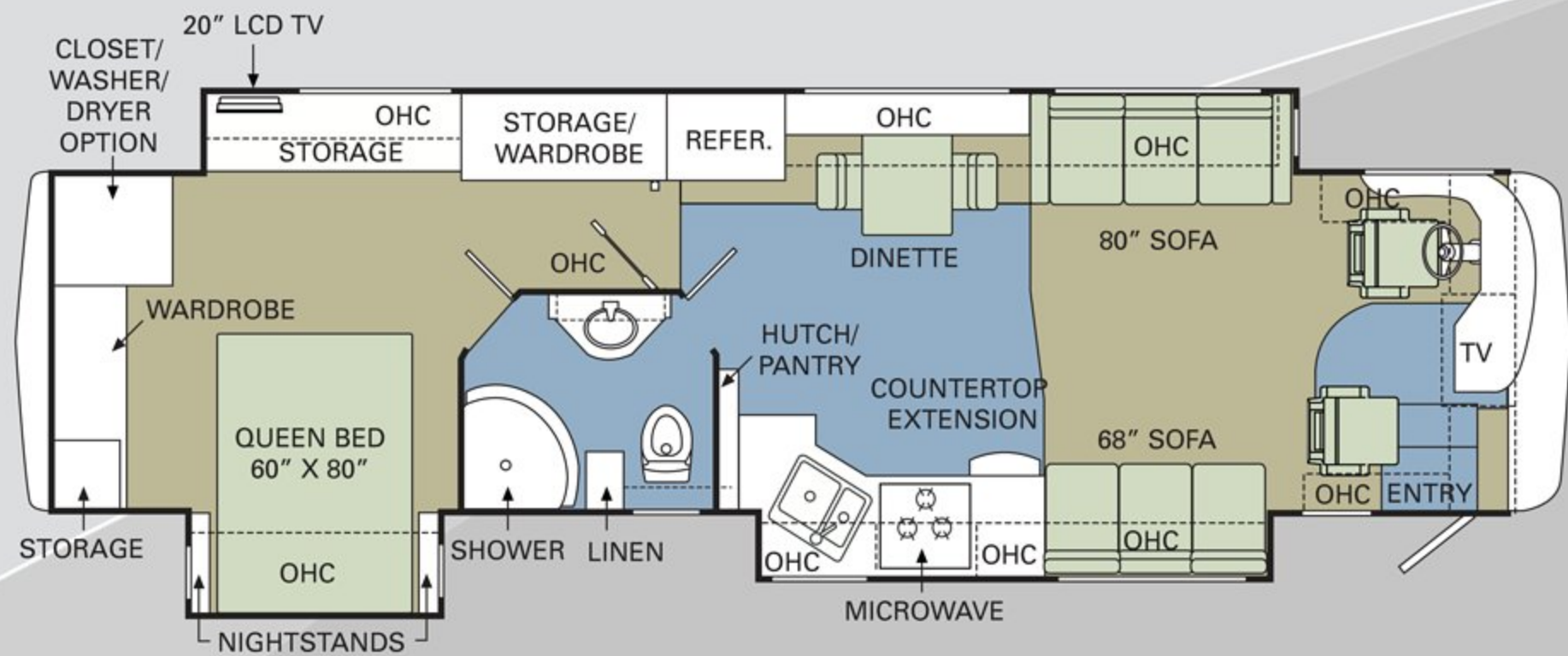


2008 FLOORPLANS ■ CARPET ■ TILE

36PDQ

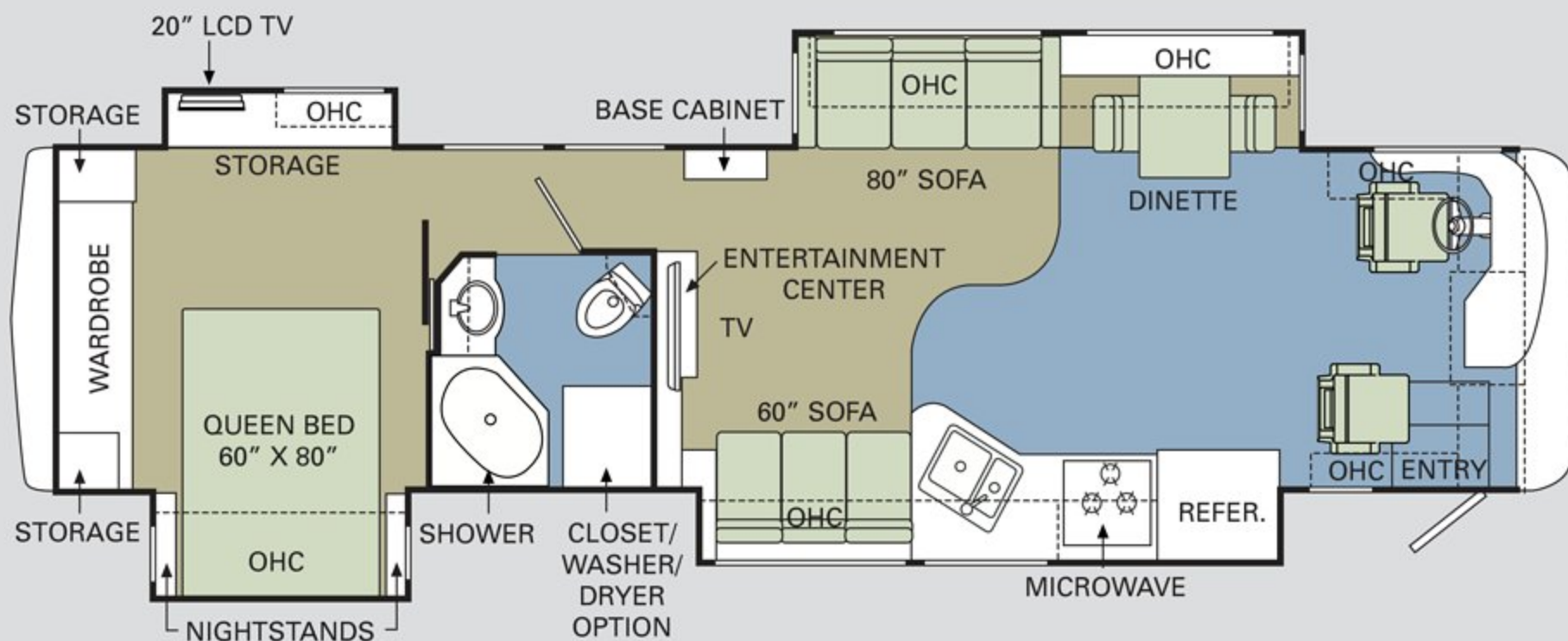


40SFT

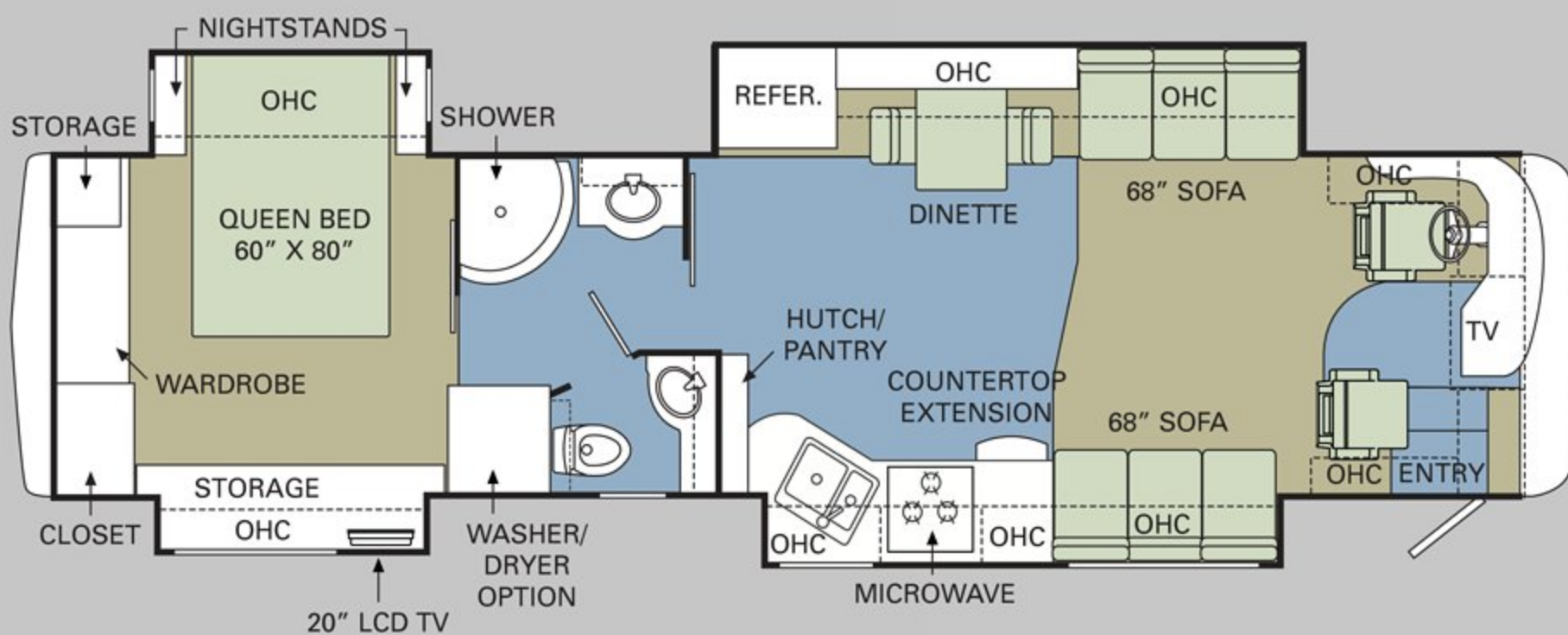




40SKQ



40PDQ







ENDEAVOR<sup>®</sup>  
2008

## BEING DIFFERENT MAKES ALL THE DIFFERENCE.

At Monaco Coach Corporation, we always strive to be the best. And that means thinking outside the box. Giving you more of what you want in an RV. Like our exclusive Roadmaster chassis. PanaSuite™ full-wall slides. And programs like Monaco Financial Services and 24/7 roadside assistance. No other manufacturer can match Monaco's offerings. No one even comes close. Why not discover the difference for yourself? Visit [www.monacodifferent.com](http://www.monacodifferent.com).

**"No other manufacturer can match Monaco's offerings.  
No one even comes close."**



## WARRANTIES

12 MONTH/24,000 MILE basic limited warranty

5 YEAR/50,000 MILE limited warranty on aluminum or steel frame structure of sidewall, roof, front and rear cap

3 YEAR/50,000 MILE limited warranty on Roadmaster chassis

Applies to certain models. See owner's manual for complete details.



HOLIDAY RAMBLER<sup>®</sup>

*This is Living<sup>®</sup>*



MONACO COACH CORPORATION

606 Nelson's Parkway Wakarusa, IN 46573  
[www.holidayrambler.com](http://www.holidayrambler.com) | 800-245-4778



Monaco is traded on the New York Stock Exchange under the listing MNC.  
© 2007, Monaco Coach Corporation 07/07 NPN:BROHEND Litho in USA.