

# Vista



## Why Vista?

- Six family-friendly floorplans
- LED ceiling lights (NA 26HE, 31KE)
- Bunk beds (35B)
- Available StudioLoft™ bed (NA 26HE)
- Private master bath and guest half bath (35B, 35F)
- Master walk-around queen bed
- MCD roller shades
- Ultraleather™ swivel cab seats (leatherette cab seats 26HE, 31KE)



# Vista



## Why Vista?

- Six family-friendly floorplans
- LED ceiling lights (NA 26HE, 31KE)
- Bunk beds (35B)
- Available StudioLoft™ bed (NA 26HE)
- Private master bath and guest half bath (35B, 35F)
- Master walk-around queen bed
- MCD roller shades
- Ultraleather™ swivel cab seats (leatherette cab seats 26HE, 31KE)





On the Cover: 35B Pearl Full-Body Paint

35B Four Seasons with Coffee-Glazed Vienna Maple Cabinetry

## Number One in Class A Value

The Winnebago Vista® continues to gain popularity as a full-featured Class A coach with an extremely attractive price. With six floorplans—including the new 31KE with a U-shaped dinette, mid-coach HDTV, and walk-around queen bed—the Vista is perfect for couples or families on the go. Value is the hallmark of the Vista and, to us, value means offering quality standard features such as

MCD roller shades, powered patio awnings, and rearview monitors. Value also means making the most of the available space, which is why you will find the StudioLoft™ drop-down bed available on most models. All this, and Winnebago Industries'® legendary reputation for quality, make the Winnebago Vista an unbeatable value in the Class A market.



**Recognized Quality** The RV Dealers Association bestows its annual Quality Circle Award based on dealer ratings to the manufacturers that provide exceptional products, service and support. Only one manufacturer has received this honor for seventeen consecutive years: Winnebago Industries.®





On the Cover: 35B Pearl Full-Body Paint

35B Four Seasons with Coffee-Glazed Vienna Maple Cabinetry

## Number One in Class A Value

The Winnebago Vista® continues to gain popularity as a full-featured Class A coach with an extremely attractive price. With six floorplans—including the new 31KE with a U-shaped dinette, mid-coach HDTV, and walk-around queen bed—the Vista is perfect for couples or families on the go. Value is the hallmark of the Vista and, to us, value means offering quality standard features such as

MCD roller shades, powered patio awnings, and rearview monitors. Value also means making the most of the available space, which is why you will find the StudioLoft™ drop-down bed available on most models. All this, and Winnebago Industries'® legendary reputation for quality, make the Winnebago Vista an unbeatable value in the Class A market.



**Recognized Quality** The RV Dealers Association bestows its annual Quality Circle Award based on dealer ratings to the manufacturers that provide exceptional products, service and support. Only one manufacturer has received this honor for seventeen consecutive years: Winnebago Industries.®



## Best in Class

See how Winnebago Industries takes motorhome design and function to the next level, and why we've earned the right to be called the Most Recognized Name in Motorhomes.®



Click on this icon throughout the brochure to link to more information on the web.



Turn your cab into a second bedroom with the available **StudioLoft™** that instantly drops down from the cab ceiling for another sleeping space (NA 26HE).



Adjust your preferred light and privacy settings with the smooth-operating **MCD Roller Shades**.



The available **Comfort Sofa Sleeper** (27N, 30T, 35B) quickly converts from a sofa into a comfortable bed and features a self-inflating mattress and pump that automatically gauges mattress pressure to maintain your desired setting.



The **OnePlace® Systems Center** lets you check major systems at the touch of a button.



## Best in Class

See how Winnebago Industries takes motorhome design and function to the next level, and why we've earned the right to be called the Most Recognized Name in Motorhomes.®



Click on this icon throughout the brochure to link to more information on the web.



Adjust your preferred light and privacy settings with the smooth-operating **MCD Roller Shades**.

Turn your cab into a second bedroom with the available **StudioLoft™** that instantly drops down from the cab ceiling for another sleeping space (NA 26HE).



The available **Comfort Sofa Sleeper** (27N, 30T, 35B) quickly converts from a sofa into a comfortable bed and features a self-inflating mattress and pump that automatically gauges mattress pressure to maintain your desired setting.



The **OnePlace® Systems Center** lets you check major systems at the touch of a button.





With six floorplans and a wide variety of available furniture combinations, the Vista lounge allows you to create your perfect living area. You'll enjoy hosting guests or relaxing in the Comfort Sofa Sleeper (27N, 30T, 35B) or Extendable Sectional Sofa (35F) while watching the HDTV. You can adjust the MCD roller shades to your preferred level of privacy and light. For additional seating, the cab seats swivel to face the lounge.







With six floorplans and a wide variety of available furniture combinations, the Vista lounge allows you to create your perfect living area. You'll enjoy hosting guests or relaxing in the Comfort Sofa Sleeper (27N, 30T, 35B) or Extendable Sectional Sofa (35F) while watching the HDTV. You can adjust the MCD roller shades to your preferred level of privacy and light. For additional seating, the cab seats swivel to face the lounge.





You'll enjoy spending time in this full-featured galley with amenities such as a microwave oven, 3-burner range top and a 2-door refrigerator/freezer. Corian® countertops (laminates in 26HE, 31KE) offer plenty of prep space, while drawers on full-extension slides provide abundant storage space. For even more upscale features, add the available Interior Upgrade Package that includes a galley backsplash, range cover, flip-up countertop extension (NA 27N), and two wood sink covers for added prep space.



35B Galley



Available 4-Door Refrigerator/Freezer w/Icemaker (35B, 35F)



Full-Extension Drawer Slides



You'll enjoy spending time in this full-featured galley with amenities such as a microwave oven, 3-burner range top and a 2-door refrigerator/freezer. Corian® countertops (laminates in 26HE, 31KE) offer plenty of prep space, while drawers on full-extension slides provide abundant storage space. For even more upscale features, add the available Interior Upgrade Package that includes a galley backsplash, range cover, flip-up countertop extension (NA 27N), and two wood sink covers for added prep space.



35B Galley



Available 4-Door Refrigerator/Freezer w/Icemaker (35B, 35F)



Full-Extension Drawer Slides





35B BenchMark Full Comfort Dinette (NA 26HE, 31KE)

Enjoy home-cooked meals in the BenchMark® full comfort dinette, complete with residential innerspring cushions that flip up for easy access to storage beneath (NA 26HE, 31KE). The 31KE features a convenient U-shaped dinette and, if you prefer a dining table, the 30T offers an available table/buffet with a retractable 39" HDTV.



35B BenchMark Dinette Storage





Enjoy home-cooked meals in the BenchMark® full comfort dinette, complete with residential innerspring cushions that flip up for easy access to storage beneath (NA 26HE, 31KE). The 31KE features a convenient U-shaped dinette and, if you prefer a dining table, the 30T offers an available table/buffet with a retractable 39" HDTV.





35B Bedroom

Most floorplans include a slideout in the bedroom and each includes a walk-around queen bed. Those looking for a little extra storage will love the expansive wardrobe in the 27N and 35B, while the bunk beds in the 35B offer cozy sleeping spaces for the kids or grandkids. The master bath in the 35B and 35F feature the BIG Shower. A dedicated 110-volt outlet is connected to the available 1,000-watt inverter to provide power without the need for the generator when shoreline power is not available (NA 26HE, 31KE).



35B Bunk Beds

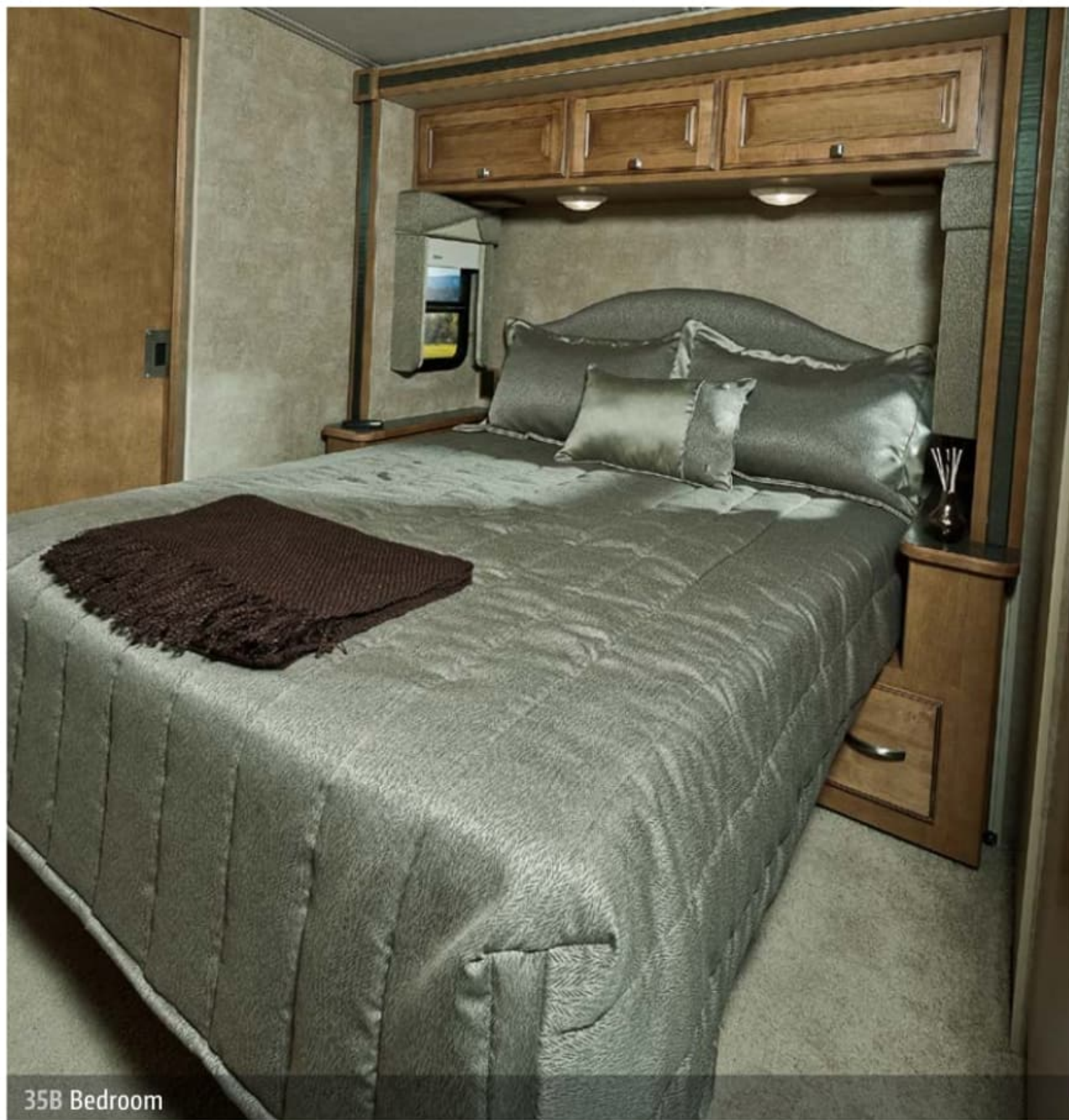


35B Wardrobe and HDTV



35B Bunk Bed Storage





Most floorplans include a slideout in the bedroom and each includes a walk-around queen bed. Those looking for a little extra storage will love the expansive wardrobe in the 27N and 35B, while the bunk beds in the 35B offer cozy sleeping spaces for the kids or grandkids. The master bath in the 35B and 35F feature the BIG Shower. A dedicated 110-volt outlet is connected to the available 1,000-watt inverter to provide power without the need for the generator when shoreline power is not available (NA 26HE, 31KE).







35B Master Bath



35B Guest Half Bath







35B Master Bath



35B Guest Half Bath





Dash

From the Rearview Monitor System to the controls for the standard hydraulic leveling jacks, the cab was designed for comfort and convenience. The cab seats feature lumbar support with multi-adjustable slide and recline to keep you comfortable, and they swivel to face the lounge for additional seating. For additional peace of mind when maneuvering your coach around the corners, select the available sideview camera system that activates with the turn signals (NA 26HE, 31KE).



Dash Workstation (NA 26HE, 31KE)



Swivel Cab Seats





Dash

From the Rearview Monitor System to the controls for the standard hydraulic leveling jacks, the cab was designed for comfort and convenience. The cab seats feature lumbar support with multi-adjustable slide and recline to keep you comfortable, and they swivel to face the lounge for additional seating. For additional peace of mind when maneuvering your coach around the corners, select the available sideview camera system that activates with the turn signals (NA 26HE, 31KE).



Dash Workstation (NA 26HE, 31KE)



Swivel Cab Seats



Automatic hydraulic leveling jacks, exterior paddle latches, and a powered patio awning make setting up quick and easy. An available exterior entertainment center with an HDTV (27N, 35B, 35F) lets you take movie nights into the great outdoors.



Powered Patio Awning



Available Exterior Entertainment Center w/HDTV (27N, 35B, 35F)



Exterior Service Center



Automatic hydraulic leveling jacks, exterior paddle latches, and a powered patio awning make setting up quick and easy. An available exterior entertainment center with an HDTV (27N, 35B, 35F) lets you take movie nights into the great outdoors.



Powered Patio Awning



Available Exterior Entertainment Center w/HDTV (27N, 35B, 35F)



Exterior Service Center



### Fiberglass Roof

The crowned, one-piece fiberglass roof is backed by a 10-year limited parts-and-labor roof skin warranty.

### Rubber Can't Cut It

Rubber roofs used by competitors can streak and degrade over time.

### Thermo-Panel® Sidewalls

By layering fiberglass and high-density block foam insulation with welded aluminum support structures, we create some of the industry's strongest, most durable and lightweight sidewalls.

### E-Coating

An electrodeposition coating helps protect critical steel components.

**Embedded Steel** Metal substructures embedded into the sidewall provide solid attachment points to keep cabinets and appliances mounted securely in place.

### Laser-Cut Tubing

Precision laser cutters create precision joints in structural steel that are stronger and require less welding.



### Interlocking Joints

Specially engineered interlocking joints connect the floor, sidewalls and roof where competitors often rely on simple screws to bear the weight.



**Solid Framework** Aluminum extruded in our own facility to our exacting standards creates an extremely strong and solid structural framework.

# SUPER STRUCTURE

BUILT TO LAST

Every coach—from our smallest Class C to our largest diesel-pusher model—is built to Winnebago Industries'® legendary SuperStructure® construction standards. It's a process developed and refined over more than 50 years of building some of the strongest, most durable coaches in the industry.



### Fiberglass Roof

The crowned, one-piece fiberglass roof is backed by a 10-year limited parts-and-labor roof skin warranty.

### Rubber Can't Cut It

Rubber roofs used by competitors can streak and degrade over time.

### Thermo-Panel® Sidewalls

By layering fiberglass and high-density block foam insulation with welded aluminum support structures, we create some of the industry's strongest, most durable and lightweight sidewalls.

### E-Coating

An electrodeposition coating helps protect critical steel components.

**Embedded Steel** Metal substructures embedded into the sidewall provide solid attachment points to keep cabinets and appliances mounted securely in place.

### Laser-Cut Tubing

Precision laser cutters create precision joints in structural steel that are stronger and require less welding.



### Interlocking Joints

Specially engineered interlocking joints connect the floor, sidewalls and roof where competitors often rely on simple screws to bear the weight.



**Solid Framework** Aluminum extruded in our own facility to our exacting standards creates an extremely strong and solid structural framework.

# SUPER STRUCTURE

BUILT TO LAST

Every coach—from our smallest Class C to our largest diesel-pusher model—is built to Winnebago Industries'® legendary SuperStructure® construction standards. It's a process developed and refined over more than 50 years of building some of the strongest, most durable coaches in the industry.



**TESTING** Before rolling out of our factories, every coach undergoes an extensive 113-point inspection. Each coach also passes a high-pressure water test that simulates rain at a rate of 50-inches per hour to check for leaks. During the design process, our computer simulations, physical testing center, and rigorous test track ensure each model is built to last.



**DETAILS** At Winnebago Industries, we treat the features you can't see with the same care as the ones you can. Look in the access panels of some of our competitors' coaches and you'll see loose insulation and wires haphazardly strewn about. Winnebago Industries maintains a clean fit and finish throughout so your coach will last for the long haul.



**BUILT IN-HOUSE** We extrude our own aluminum. We rotocast our own plastic components. In fact, we manufacture most of our own parts so they are designed to fit the space, rather than fitting the space to an awkward off-the-shelf component size.



**SUPER  
STRUCTURE**  
BUILT TO LAST

Visit [BetterBuiltRVs.com](http://BetterBuiltRVs.com) to gain real insight into what goes into a Winnebago Industries motorhome.

**TAKE A TOUR** We're proud of our processes, state-of-the-art facilities, and the people who make Winnebago Industries number one. We invite you to visit our complex in Forest City, Iowa, for a first-hand look at the dedication and technology behind every motorhome we build.





**TESTING** Before rolling out of our factories, every coach undergoes an extensive 113-point inspection. Each coach also passes a high-pressure water test that simulates rain at a rate of 50-inches per hour to check for leaks. During the design process, our computer simulations, physical testing center, and rigorous test track ensure each model is built to last.



**DETAILS** At Winnebago Industries, we treat the features you can't see with the same care as the ones you can. Look in the access panels of some of our competitors' coaches and you'll see loose insulation and wires haphazardly strewn about. Winnebago Industries maintains a clean fit and finish throughout so your coach will last for the long haul.



**BUILT IN-HOUSE** We extrude our own aluminum. We rotocast our own plastic components. In fact, we manufacture most of our own parts so they are designed to fit the space, rather than fitting the space to an awkward off-the-shelf component size.



**SUPER  
STRUCTURE**  
BUILT TO LAST

Visit [BetterBuiltRVs.com](http://BetterBuiltRVs.com) to gain real insight into what goes into a Winnebago Industries motorhome.

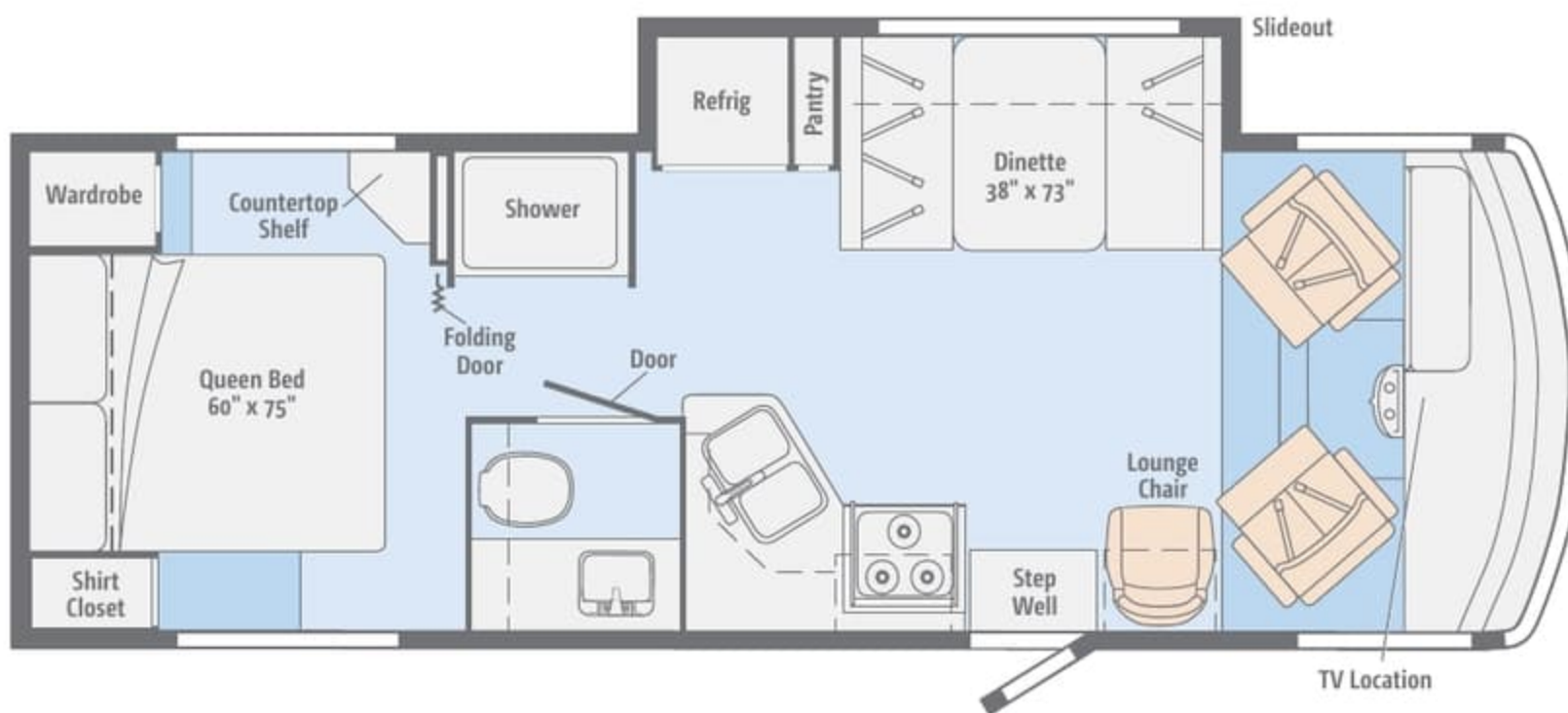
**TAKE A TOUR** We're proud of our processes, state-of-the-art facilities, and the people who make Winnebago Industries number one. We invite you to visit our complex in Forest City, Iowa, for a first-hand look at the dedication and technology behind every motorhome we build.





## 26HE

Swivel cab seats, a full-featured galley, a walk-around queen bed, a wardrobe, and a shirt closet are just a few of the desirable features found in this floorplan.

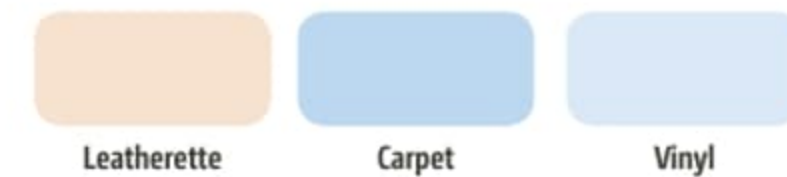
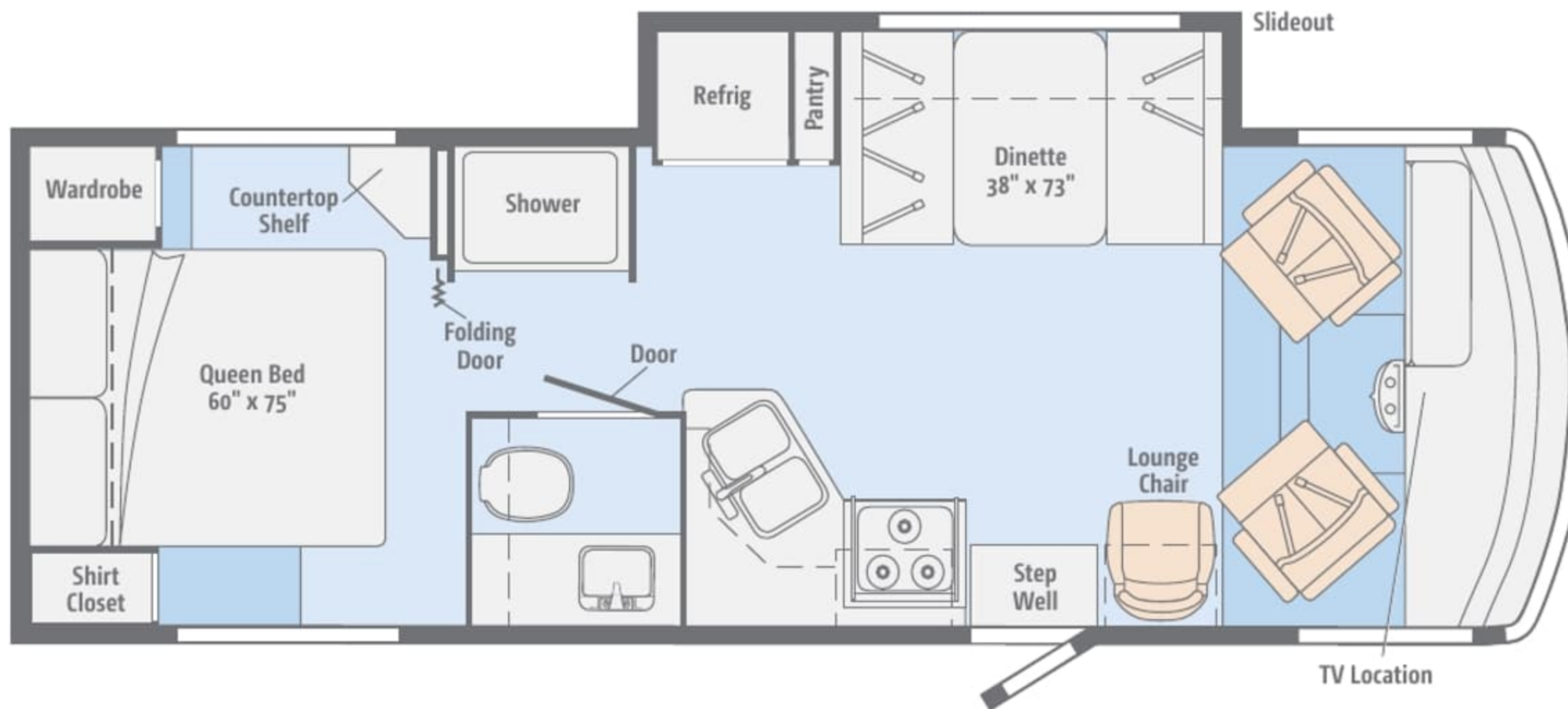


Dimensions shown are for sleeping space only and may vary due to styling differences. Dashed lines denote overhead storage areas. Floorplans and specifications are also available online at [GoWinnebago.com](http://GoWinnebago.com).



## 26HE

Swivel cab seats, a full-featured galley, a walk-around queen bed, a wardrobe, and a shirt closet are just a few of the desirable features found in this floorplan.

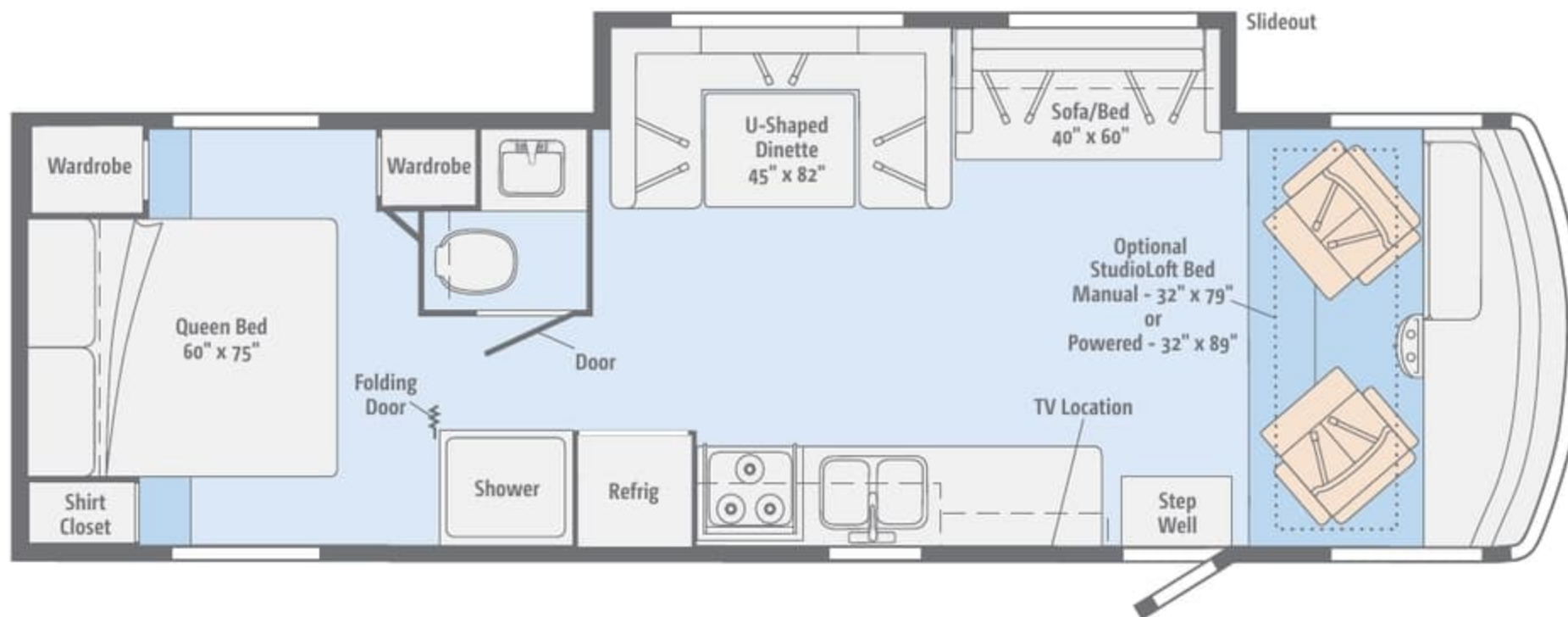


Dimensions shown are for sleeping space only and may vary due to styling differences. Dashed lines denote overhead storage areas. Floorplans and specifications are also available online at [GoWinnebago.com](http://GoWinnebago.com).



## NEW 31KE

This new floorplan offers a large living area with a sofa/bed, U-shaped dinette, split bath, and a walk-around queen bed with a shirt closet and a wardrobe on either side.

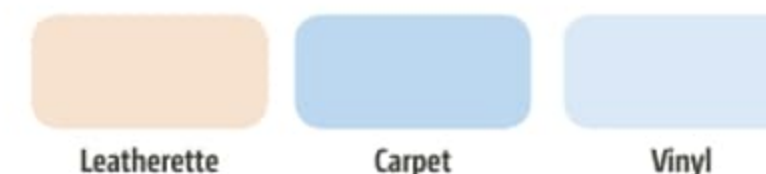
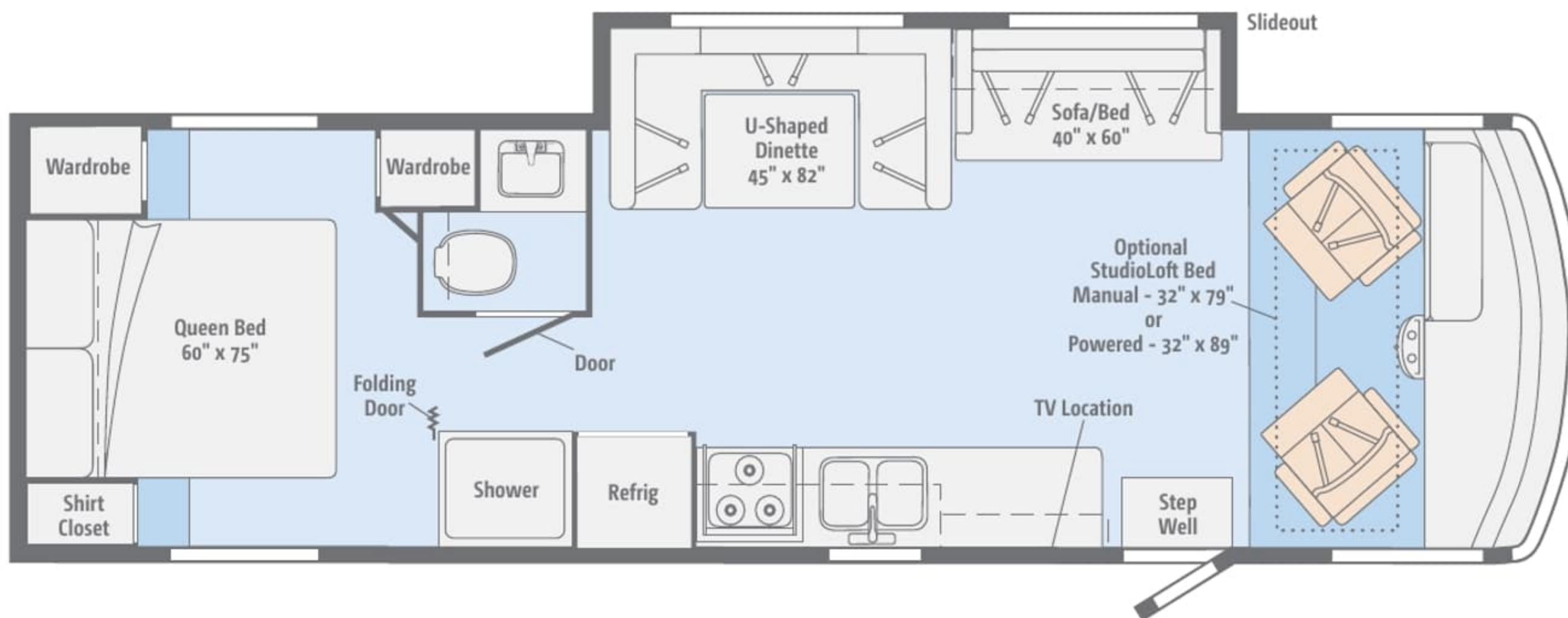


Dimensions shown are for sleeping space only and may vary due to styling differences. Dashed lines denote overhead storage areas. Floorplans and specifications are also available online at [GoWinnebago.com](http://GoWinnebago.com).



## NEW 31KE

This new floorplan offers a large living area with a sofa/bed, U-shaped dinette, split bath, and a walk-around queen bed with a shirt closet and a wardrobe on either side.

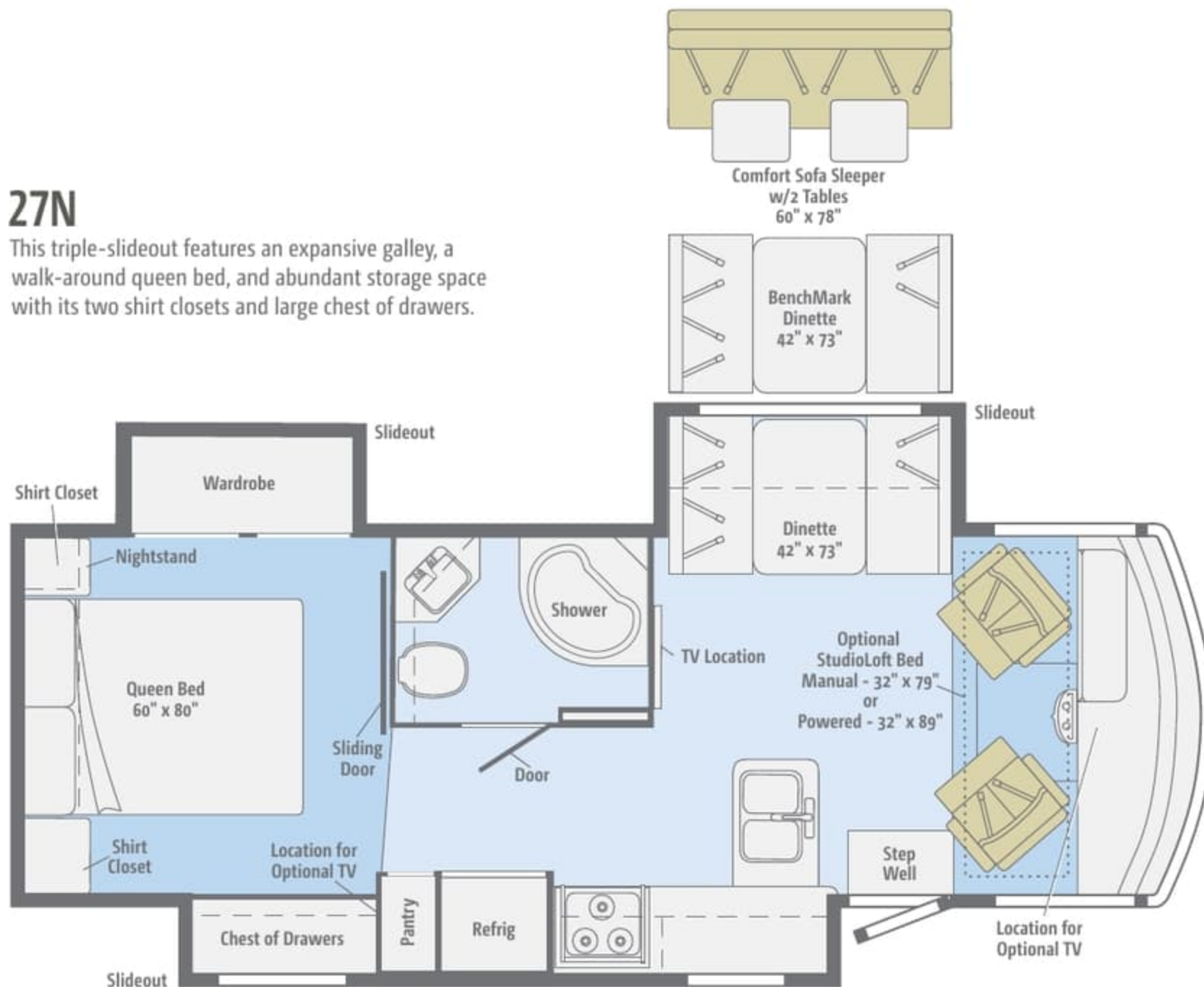


Dimensions shown are for sleeping space only and may vary due to styling differences. Dashed lines denote overhead storage areas. Floorplans and specifications are also available online at [GoWinnebago.com](http://GoWinnebago.com).



# 27N

This triple-slideout features an expansive galley, a walk-around queen bed, and abundant storage space with its two shirt closets and large chest of drawers.

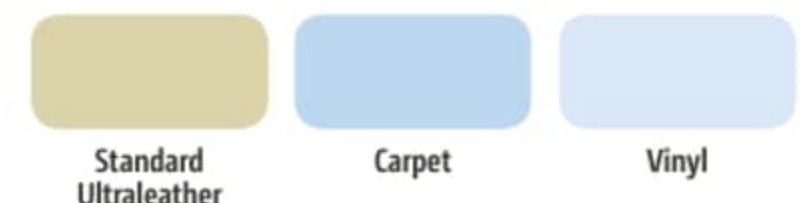
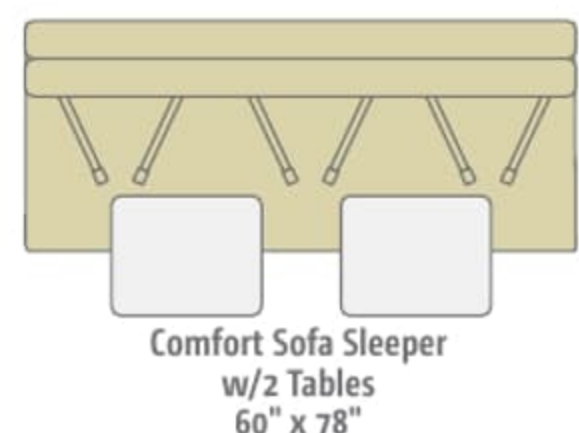
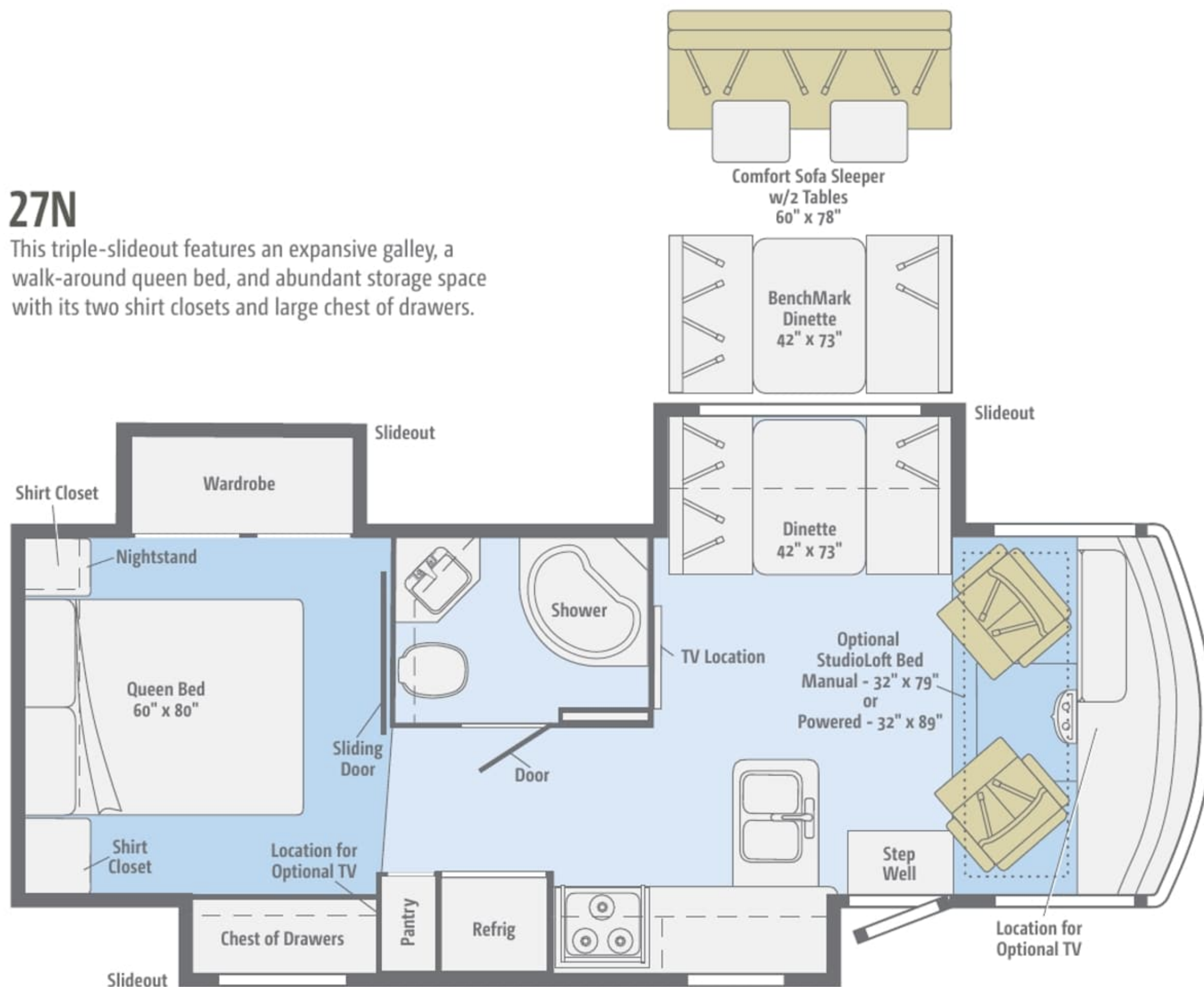


Dimensions shown are for sleeping space only and may vary due to styling differences. Dashed lines denote overhead storage areas. Floorplans and specifications are also available online at [GoWinnebago.com](http://GoWinnebago.com).



## 27N

This triple-slideout features an expansive galley, a walk-around queen bed, and abundant storage space with its two shirt closets and large chest of drawers.



Dimensions shown are for sleeping space only and may vary due to styling differences. Dashed lines denote overhead storage areas. Floorplans and specifications are also available online at [GoWinnebago.com](http://GoWinnebago.com).



## 30T

With a variety of dining options, a split bath, a walk-around queen bed, and twin wardrobes, this triple-slideout is one of our most popular.



Standard Ultraleather	Carpet	Vinyl

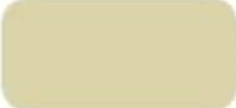


Dimensions shown are for sleeping space only and may vary due to styling differences. Dashed lines denote overhead storage areas. Floorplans and specifications are also available online at [GoWinnebago.com](http://GoWinnebago.com).



## 30T

With a variety of dining options, a split bath, a walk-around queen bed, and twin wardrobes, this triple-slideout is one of our most popular.



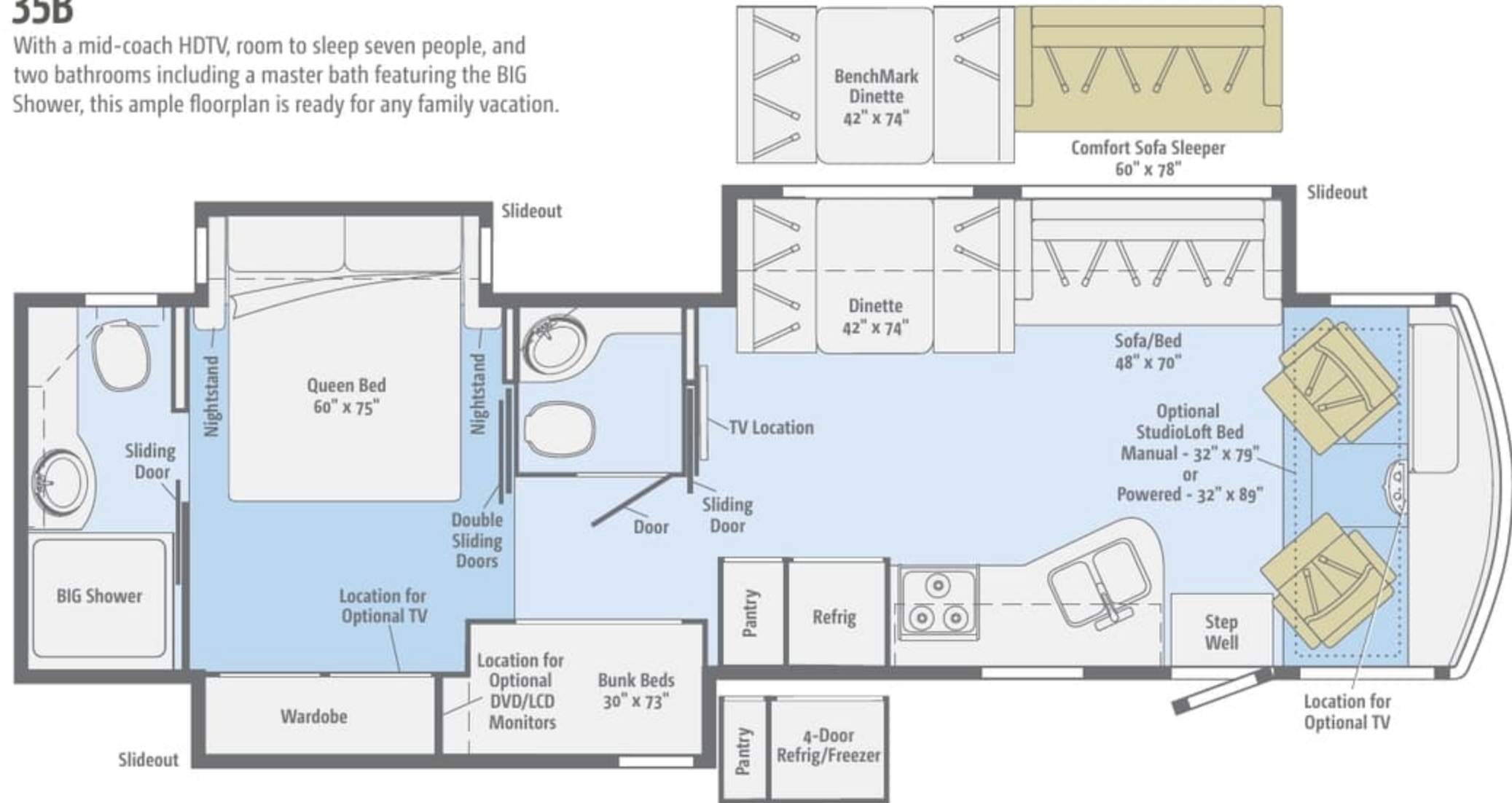
		
Standard Ultraleather	Carpet	Vinyl

Dimensions shown are for sleeping space only and may vary due to styling differences. Dashed lines denote overhead storage areas. Floorplans and specifications are also available online at [GoWinnebago.com](http://GoWinnebago.com).



## 35B

With a mid-coach HDTV, room to sleep seven people, and two bathrooms including a master bath featuring the BIG Shower, this ample floorplan is ready for any family vacation.

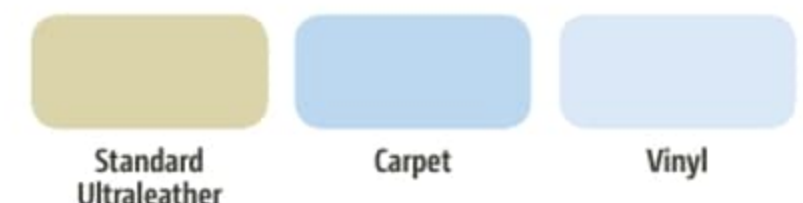
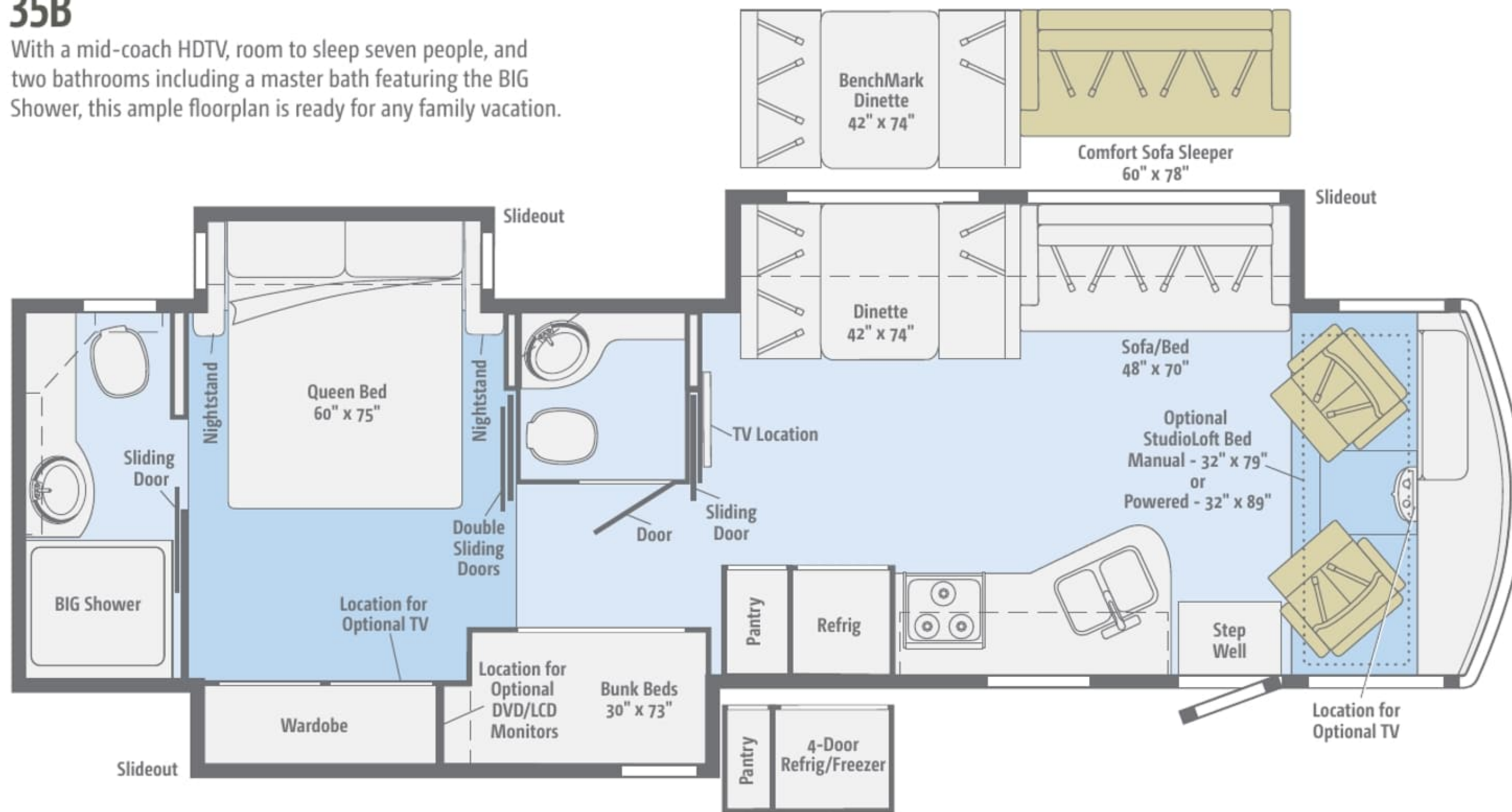


Dimensions shown are for sleeping space only and may vary due to styling differences. Dashed lines denote overhead storage areas. Floorplans and specifications are also available online at [GoWinnebago.com](http://GoWinnebago.com).



## 35B

With a mid-coach HDTV, room to sleep seven people, and two bathrooms including a master bath featuring the BIG Shower, this ample floorplan is ready for any family vacation.

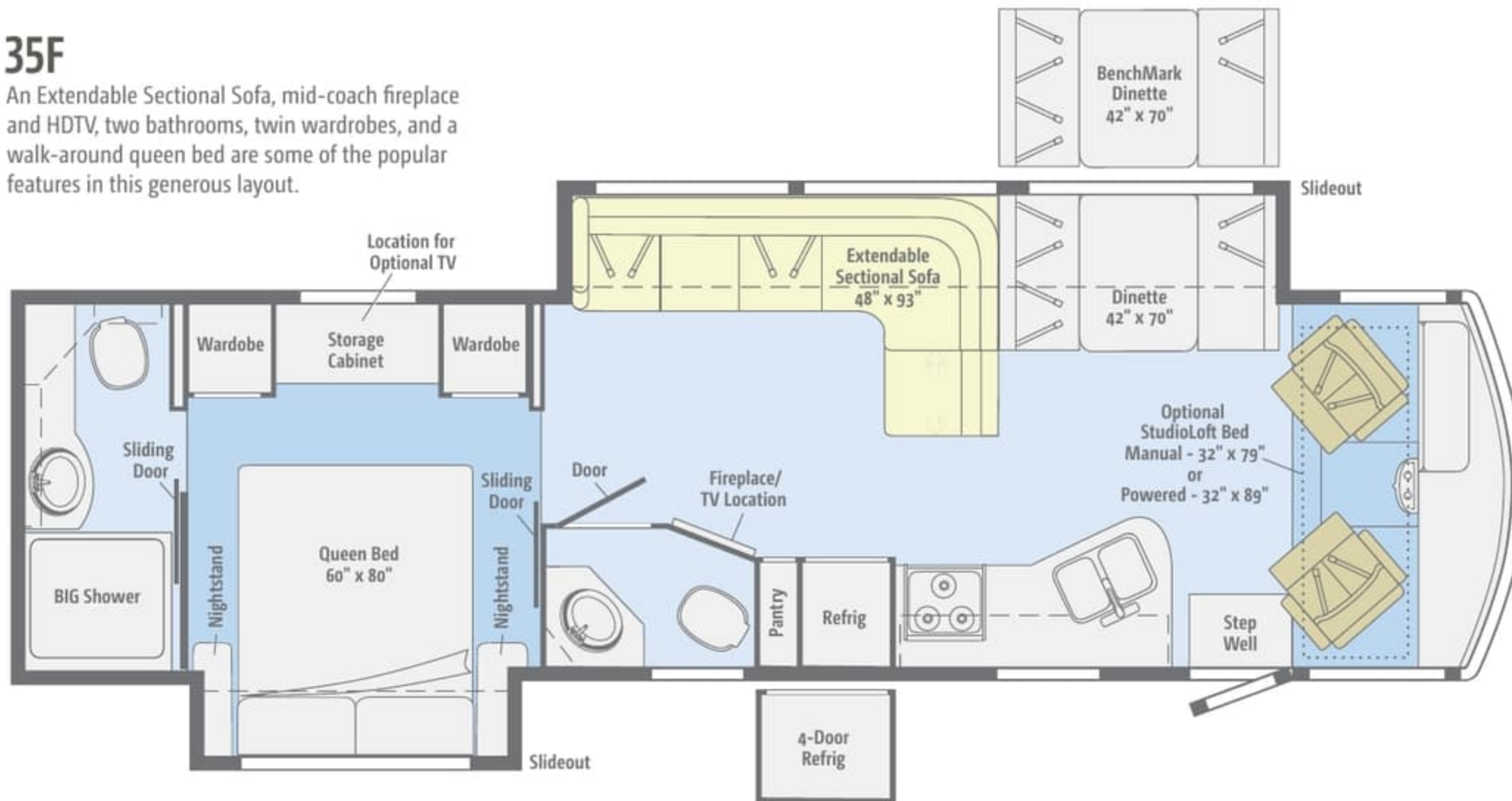


Dimensions shown are for sleeping space only and may vary due to styling differences. Dashed lines denote overhead storage areas. Floorplans and specifications are also available online at [GoWinnebago.com](http://GoWinnebago.com).



### 35F

An Extendable Sectional Sofa, mid-coach fireplace and HDTV, two bathrooms, twin wardrobes, and a walk-around queen bed are some of the popular features in this generous layout.



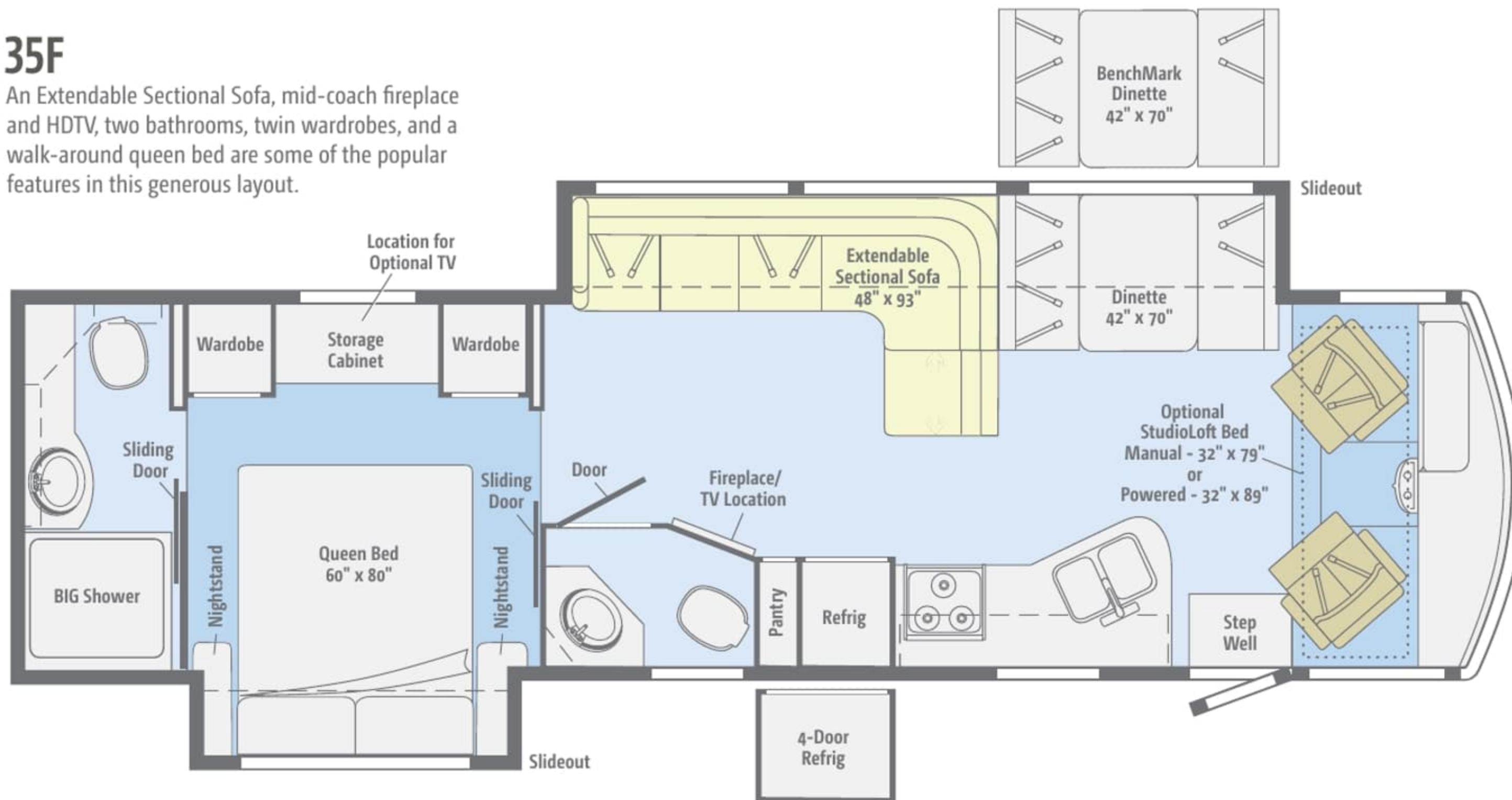
Standard Ultraleather	Optional Ultraleather	Carpet	Vinyl

Dimensions shown are for sleeping space only and may vary due to styling differences. Dashed lines denote overhead storage areas. Floorplans and specifications are also available online at [GoWinnebago.com](http://GoWinnebago.com).



## 35F

An Extendable Sectional Sofa, mid-coach fireplace and HDTV, two bathrooms, twin wardrobes, and a walk-around queen bed are some of the popular features in this generous layout.



Standard Ultraleather	Optional Ultraleather	Carpet	Vinyl

Dimensions shown are for sleeping space only and may vary due to styling differences. Dashed lines denote overhead storage areas. Floorplans and specifications are also available online at [GoWinnebago.com](http://GoWinnebago.com).



Choose from three fabric collections and two wood finishes, each with Satin Nickel hardware.

### Four Seasons



Main



Ultraleather



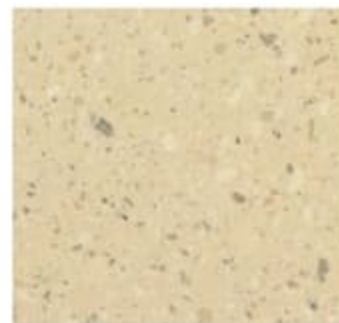
Leatherette  
(26HE, 31KE)



Accent



Bedspread



Corian Countertop  
(Galley)



HD Laminate Countertop  
(26HE, 31KE)



Wall Board



Carpet



Vinyl



Forest Cherry



Coffee-Glazed Vienna Maple  
(NA 26HE, 31KE)

*Fabrics and carpets may change without notice or obligation.*



Choose from three fabric collections and two wood finishes, each with Satin Nickel hardware.

### Four Seasons



Main



Ultraleather



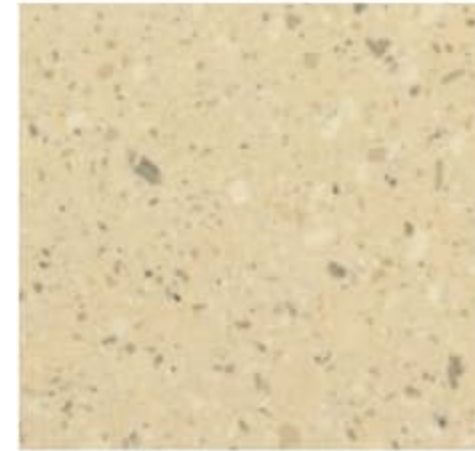
Leatherette  
(26HE, 31KE)



Accent



Bedsread



Corian Countertop  
(Galley)



HD Laminate Countertop  
(26HE, 31KE)



Wall Board



Carpet



Vinyl



Forest Cherry



Coffee-Glazed Vienna Maple  
(NA 26HE, 31KE)

*Fabrics and carpets may change without notice or obligation.*



Choose from three fabric collections and two wood finishes, each with Satin Nickel hardware.

### Pecan Frost



Main



Ultraleather



Leatherette  
(26HE, 31KE)



Accent



Bedspread



Corian Countertop  
(Galley)



HD Laminate Countertop  
(26HE, 31KE)



Wall Board



Carpet



Vinyl



Forest Cherry



Coffee-Glazed Vienna Maple  
(NA 26HE, 31KE)

*Fabrics and carpets may change without notice or obligation.*



Choose from three fabric collections and two wood finishes, each with Satin Nickel hardware.

### Pecan Frost



Main



Ultraleather



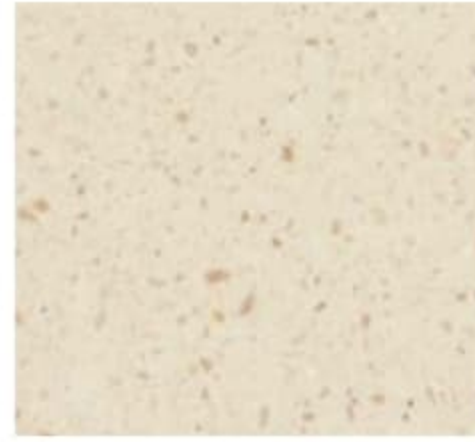
Leatherette  
(26HE, 31KE)



Accent



Bedsread



Corian Countertop  
(Galley)



HD Laminate Countertop  
(26HE, 31KE)



Wall Board



Carpet



Vinyl



Forest Cherry



Coffee-Glazed Vienna Maple  
(NA 26HE, 31KE)

*Fabrics and carpets may change without notice or obligation.*

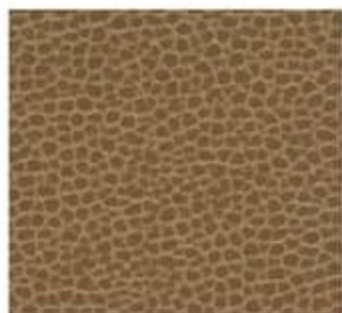


Choose from three fabric collections and two wood finishes, each with Satin Nickel hardware.

## Sonoma



Main



Ultraleather



Leatherette  
(26HE, 31KE)



Accent



Bedspread



Corian Countertop  
(Galley)



HD Laminate Countertop  
(26HE, 31KE)



Wall Board



Carpet



Vinyl



Forest Cherry



Coffee-Glazed Vienna Maple  
(NA 26HE, 31KE)

*Fabrics and carpets may change without notice or obligation.*

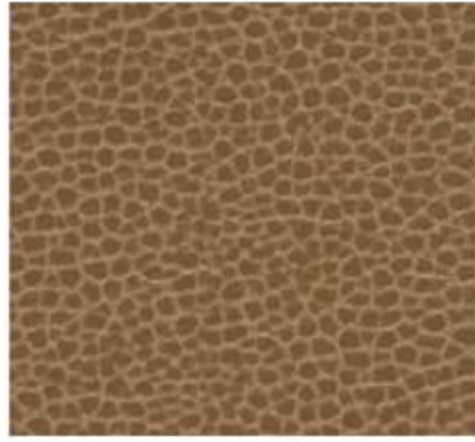


Choose from three fabric collections and two wood finishes, each with Satin Nickel hardware.

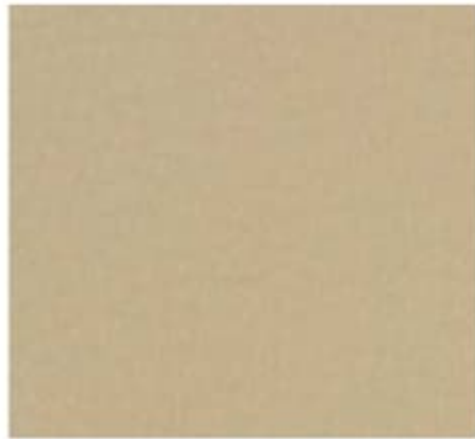
## Sonoma



Main



Ultraleather



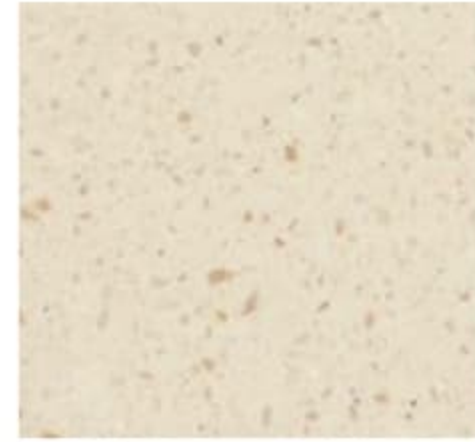
Leatherette  
(26HE, 31KE)



Accent



Bedsread



Corian Countertop  
(Galley)



HD Laminate Countertop  
(26HE, 31KE)



Wall Board



Carpet



Vinyl



Forest Cherry



Coffee-Glazed Vienna Maple  
(NA 26HE, 31KE)

*Fabrics and carpets may change without notice or obligation.*



The streamlined appearance of the Vista is enhanced with standard graphics or available full-body paint (NA 26HE, 31KE).  
*Champagne sidewalls replacing Taupe sidewalls as running line change February 2014*



**Khaki (with Taupe sidewalls)**  
STANDARD GRAPHICS (26HE, 31KE)



**Khaki (with Champagne sidewalls)**  
STANDARD GRAPHICS (26HE, 31KE)



The streamlined appearance of the Vista is enhanced with standard graphics or available full-body paint (NA 26HE, 31KE).  
*Champagne sidewalls replacing Taupe sidewalls as running line change February 2014*



**Khaki (with Taupe sidewalls)**  
STANDARD GRAPHICS (26HE, 31KE)



**Khaki (with Champagne sidewalls)**  
STANDARD GRAPHICS (26HE, 31KE)



The streamlined appearance of the Vista is enhanced with standard graphics or available full-body paint (NA 26HE, 31KE).  
*Champagne sidewalls replacing Taupe sidewalls as running line change February 2014*



**Desert Sand (with Taupe sidewalls)**  
STANDARD GRAPHICS (NA 26HE, 31KE)



**Desert Sand (with Champagne sidewalls)**  
STANDARD GRAPHICS (NA 26HE, 31KE)



The streamlined appearance of the Vista is enhanced with standard graphics or available full-body paint (NA 26HE, 31KE).  
*Champagne sidewalls replacing Taupe sidewalls as running line change February 2014*



**Desert Sand (with Taupe sidewalls)**  
STANDARD GRAPHICS (NA 26HE, 31KE)



**Desert Sand (with Champagne sidewalls)**  
STANDARD GRAPHICS (NA 26HE, 31KE)



The streamlined appearance of the Vista is enhanced with standard graphics or available full-body paint (NA 26HE, 31KE).



**Black Garnet**  
FULL-BODY PAINT



**Pearl**  
FULL-BODY PAINT



**Cadet**  
FULL-BODY PAINT



**Cayenne**  
FULL-BODY PAINT



The streamlined appearance of the Vista is enhanced with standard graphics or available full-body paint (NA 26HE, 31KE).



**Black Garnet**  
FULL-BODY PAINT



**Pearl**  
FULL-BODY PAINT



**Cadet**  
FULL-BODY PAINT



**Cayenne**  
FULL-BODY PAINT



## Weights & Measures

	26HE	31KE	27N	30T	35B	35F
Length	26'11"	31'2"	28'3"	30'11"	36'4"	35'3"
Exterior Height <sup>1</sup>	12'2"	12'3"	12'2"	12'2"	12'6"	12'6"
Exterior Width <sup>2</sup>	8'5.5"	8'5.5"	8'5.5"	8'5.5"	8'5.5"	8'5.5"
Exterior Storage <sup>3</sup> (cu. ft.)	117	168	114	118	160	154
Awning Length	19'	17'	19'	17'	13'	16'
Interior Height	6'8"	6'8"	6'8"	6'8"	6'8"	6'8"
Interior Width	8'0.5"	8'0.5"	8'0.5"	8'0.5"	8'0.5"	8'0.5"
Freshwater Tank Capacity <sup>4</sup> (gal.)	54	64	64	78	93	74
Water Heater Capacity (gal.)	6	6	6	6	6	6
Holding Tank Capacity - Black/Gray <sup>4</sup> (gal.)	43/38	41/57	43/53	41/42	41/46 & 41/51*	41/51 & 21/NA**
LP Capacity <sup>5</sup> (gal.)	18	18	18	18	18	18
Fuel Capacity (gal.)	80	80	80	80	80	80
GCWR <sup>6</sup> (lbs.)	23,000	23,000	23,000	23,000	26,000	26,000
GVWR (lbs.)	16,000	16,000	18,000	18,000	22,000	22,000
GAWR - Front (lbs.)	6,500	6,500	7,000	7,000	8,000	8,000
GAWR - Rear (lbs.)	11,000	11,000	12,000	12,000	15,000	15,000
Wheelbase	158"	190"	178"	190"	242"	228"

\* The 35B uses separate black and gray tanks for each bathroom

\*\* The 35F uses separate black tanks for each bathroom

## Optional Interior Upgrade Package

(27N, 30T, 35B, 35F) soft vinyl ceiling, galley backsplash, flip-up countertop extension (NA 27N), Dream Dinette™ dining table, range cover, two sink covers, raised-panel refrigerator inserts, throw pillow(s)

## Cab Conveniences

**Cab seats** adjustable armrests, lumbar support and multi-adjustable slide/recline/swivel

**3-point seat belts**

**AM/FM stereo CD player**

**Rearview Monitor System** w/color camera, one-way audio and color LCD monitor

**Chassis/house battery radio power switch**

**Power steering w/tilt wheel**

**Exterior power mirrors w/defrost**

**Cab wraparound curtain**

**Cruise control**

**12-volt powerpoints**

**Map light(s)**

**Sunvisors**

**C.B. wire prep** (NA 26HE, 31KE)

## OPTIONAL EQUIPMENT

**Sideview video camera system** w/color monitor (requires Rearview Monitor System) (NA 26HE, 31KE)

**6-way power driver seat** (NA 26HE, 31KE)

**Passenger seat w/footrest** (NA 26HE, 31KE)

**Dual-speed defroster fans** (NA 26HE, 31KE)

**AM/FM stereo w/CD/DVD player, input jack, Bluetooth™ remote and alarm clock** (NA 26HE, 31KE)

**Dash workstation** (NA 26HE, 31KE)

## Interior

**32" HDTV** (26HE, 31KE, 30T, 35F)

**42" HDTV** (27N, 35B)

**Amplified digital TV antenna system**

**Key-activated slideroom master lock switch**

**Satellite system ready** (NA 26HE, 31KE)

**MCD solar/blackout roller shades** (lounges, dinette, bedroom) (MCD blackout roller shades 26HE, 31KE)

**OnePlace® systems center**

## Chassis

**Ford® F53 Chassis** 362-hp 3-valve Triton® V10 engine SEFI, TorqShift™ 5-speed automatic transmission w/tow/haul, 175-amp. alternator

**Hydraulic brakes w/ABS**

**Trailer Hitch®** 5,000-lb. drawbar/500-lb. maximum vertical tongue weight

**7-pin connector**

**Stainless steel wheel liners w/19.5" tires** (26HE, 31KE, 27N, 30T)

**Stylized aluminum wheels w/22.5" tires** (35B, 35F)

**Automatic hydraulic leveling jacks**



Ford F53 Chassis



## Weights & Measures

	26HE	31KE	27N	30T	35B	35F
Length	26'11"	31'2"	28'3"	30'11"	36'4"	35'3"
Exterior Height <sup>1</sup>	12'2"	12'3"	12'2"	12'2"	12'6"	12'6"
Exterior Width <sup>2</sup>	8'5.5"	8'5.5"	8'5.5"	8'5.5"	8'5.5"	8'5.5"
Exterior Storage <sup>3</sup> (cu. ft.)	117	168	114	118	160	154
Awning Length	19'	17'	19'	17'	13'	16'
Interior Height	6'8"	6'8"	6'8"	6'8"	6'8"	6'8"
Interior Width	8'0.5"	8'0.5"	8'0.5"	8'0.5"	8'0.5"	8'0.5"
Freshwater Tank Capacity <sup>4</sup> (gal.)	54	64	64	78	93	74
Water Heater Capacity (gal.)	6	6	6	6	6	6
Holding Tank Capacity - Black/Gray <sup>4</sup> (gal.)	43/38	41/57	43/53	41/42	41/46 & 41/51*	41/51 & 21/NA**
LP Capacity <sup>5</sup> (gal.)	18	18	18	18	18	18
Fuel Capacity (gal.)	80	80	80	80	80	80
GCWR <sup>6</sup> (lbs.)	23,000	23,000	23,000	23,000	26,000	26,000
GVWR (lbs.)	16,000	16,000	18,000	18,000	22,000	22,000
GAWR - Front (lbs.)	6,500	6,500	7,000	7,000	8,000	8,000
GAWR - Rear (lbs.)	11,000	11,000	12,000	12,000	15,000	15,000
Wheelbase	158"	190"	178"	190"	242"	228"

\* The 35B uses separate black and gray tanks for each bathroom

\*\* The 35F uses separate black tanks for each bathroom

## Optional Interior Upgrade Package

(27N, 30T, 35B, 35F) soft vinyl ceiling, galley backsplash, flip-up countertop extension (NA 27N), Dream Dinette™ dining table, range cover, two sink covers, raised-panel refrigerator inserts, throw pillow(s)

## Cab Conveniences

**Cab seats** adjustable armrests, lumbar support and multi-adjustable slide/recline/swivel

**3-point seat belts**

**AM/FM stereo CD player**

**Rearview Monitor System** w/color camera, one-way audio and color LCD monitor

**Chassis/house battery radio power switch**

**Power steering w/tilt wheel**

**Exterior power mirrors w/defrost**

**Cab wraparound curtain**

**Cruise control**

**12-volt powerpoints**

**Map light(s)**

**Sunvisors**

**C.B. wire prep** (NA 26HE, 31KE)

## OPTIONAL EQUIPMENT

**Sideview video camera system** w/color monitor (requires Rearview Monitor System) (NA 26HE, 31KE)

**6-way power driver seat** (NA 26HE, 31KE)

**Passenger seat w/footrest** (NA 26HE, 31KE)

**Dual-speed defroster fans** (NA 26HE, 31KE)

**AM/FM stereo w/CD/DVD player, input jack, Bluetooth™ remote and alarm clock** (NA 26HE, 31KE)

**Dash workstation** (NA 26HE, 31KE)

## Interior

**32" HDTV** (26HE, 31KE, 30T, 35F)

**42" HDTV** (27N, 35B)

**Amplified digital TV antenna system**

**Key-activated slideroom master lock switch**

**Satellite system ready** (NA 26HE, 31KE)

**MCD solar/blackout roller shades** (lounge, dinette, bedroom) (MCD blackout roller shades 26HE, 31KE)

**OnePlace® systems center**

## Chassis

**Ford® F53 Chassis** 362-hp 3-valve Triton® V10 engine SEFI, TorqShift™ 5-speed automatic transmission w/tow/haul, 175-amp. alternator

**Hydraulic brakes w/ABS**

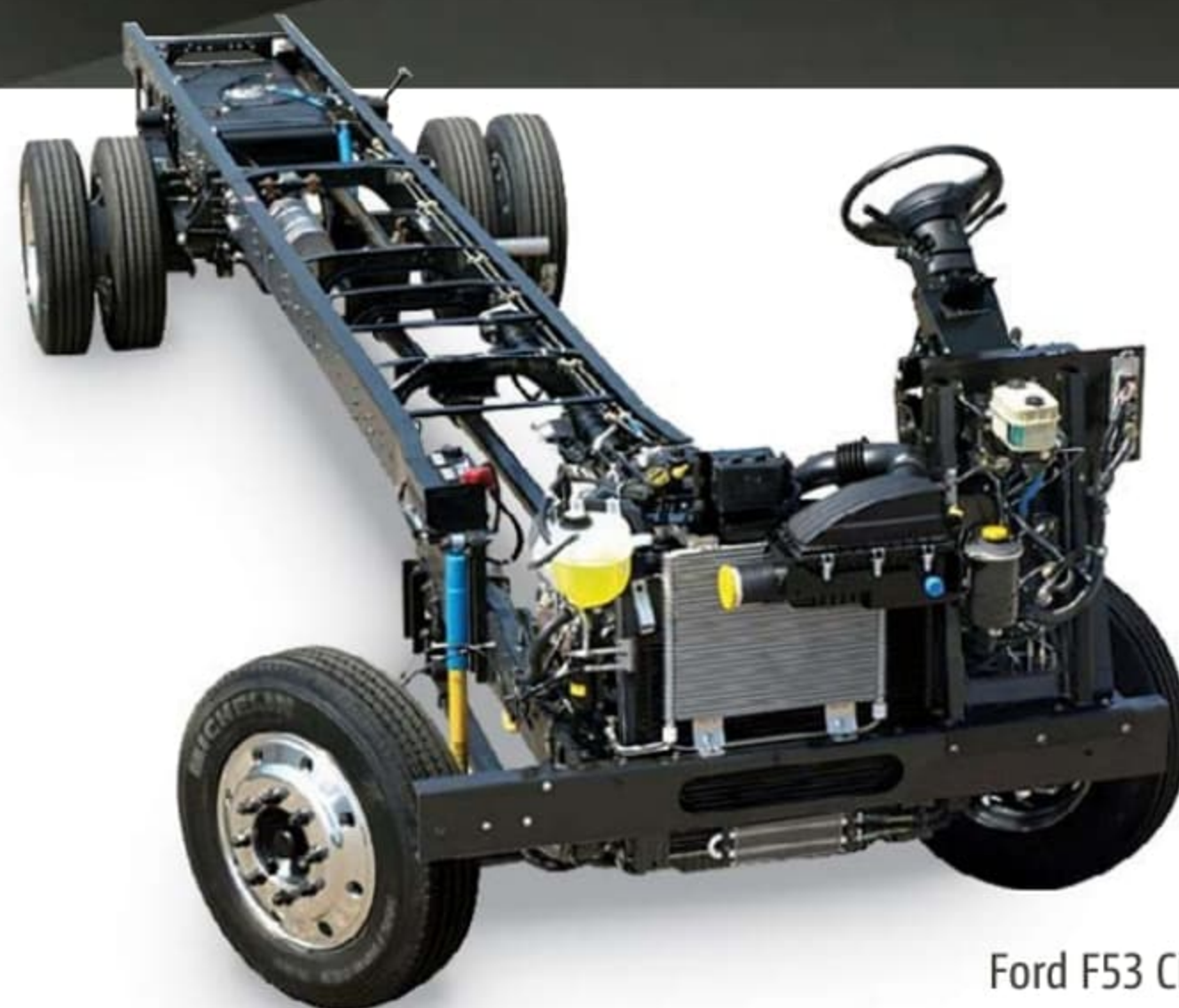
**Trailer Hitch** 5,000-lb. drawbar/500-lb. maximum vertical tongue weight

**7-pin connector**

**Stainless steel wheel liners w/19.5" tires** (26HE, 31KE, 27N, 30T)

**Stylized aluminum wheels w/22.5" tires** (35B, 35F)

**Automatic hydraulic leveling jacks**



Ford F53 Chassis



**Powered ventilator fan** (lounge, non-power 26HE, 31KE)

**Powered ventilator roof vent** (27N bedroom)

**Powered roof vent** (bath)

**Tinted windows**

**LED lights** (NA 26HE, 31KE)

**Electric fireplace** (35F)

#### OPTIONAL EQUIPMENT

46" HDTV (27N, 35B)

StudioLoft™ (NA 26HE)

Dining table/buffet/chairs w/retractable 39" HDTV (30T)

32" HDTV (27N, 35B)

Tinted, dual-glazed, thermo-insulated windows (NA 26HE, 31KE)

Vinyl floorcovering (excludes cab, slideroom floor and bedroom) (30T)

## Galley

**Corian® countertops** (NA 26HE, 31KE)

**Laminate countertops** (26HE, 31KE)

**2-door refrigerator/freezer**

**Microwave oven** (26HE, 31KE, 30T)

**Microwave oven w/range fan** (27N, 35B, 35F)

**3-burner range w/oven** (26HE, 31KE)

**3-burner range top w/storage below** (27N, 30T, 35B, 35F)

**Vented range hood** (26HE, 31KE, 30T)

#### OPTIONAL EQUIPMENT

3-burner range w/oven (27N, 30T, 35B, 35F)

Microwave/convection oven (30T)

Microwave/convection oven w/range fan (27N, 35B, 35F)

4-door refrigerator/freezer w/icemaker (35B, 35F)

## Bath

**Laminate countertop**

**Flexible showerhead**

**Textured glass shower door**

**Skylight**

## Bedroom

**Queen bed w/innerspring mattress and storage below**

**Bedsread** (26HE, 31KE)

**Bedsread, pillows and shams** (27N, 30T, 35B, 35F)

**Storage area below bed**

**Bunk beds w/foam mattresses, mattress covers and privacy curtains** (35B)

#### OPTIONAL EQUIPMENT

Two DVD players w/10.1" LCD monitors and headphones (35B bunk beds)

22" HDTV w/cable wall input (27N, 30T, 35F)

26" HDTV w/cable wall input (35B)

## Exterior

**Premium taupe-colored high-gloss sidewall skin**

**Automatic entrance door steps**

**Powered patio awning**

**Mud flaps**

**Porch light**

**Lighted storage compartments** (in select compartments)

**Ladder** (NA 26HE, 31KE)

#### OPTIONAL EQUIPMENT

Lower front protective mask (w/full-body paint only)

Entertainment Center AM/FM stereo, CD player, remote, AC duplex, DC receptacle, removable TV table, speakers and lockable compartment (30T)

Entertainment Center 32" HDTV w/remote, AM/FM stereo w/DVD player w/remote, speakers (27N, 35B, 35F)

## Heating & Cooling System

**14,800 BTU roof-mount air conditioner** (26HE, 31KE, 27N, 30T)

**Two high-efficiency roof-mount air conditioners w/Energy Management System** (35B, 35F)

**30,000 BTU low-profile furnace** (26HE, 31KE, 27N, 30T)

**40,000 BTU low-profile furnace** (35B, 35F)

#### OPTIONAL EQUIPMENT

A/C heat pump (27N, 30T)

Two high-efficiency A/C heat pumps (35B, 35F)

## Electrical System

**AC/DC load center, 45-amp. converter/charger** (26HE, 31KE, 27N, 30T)

**AC/DC electrical distribution system, 45-amp. converter/charger** (35B, 35F)

**30-amp. power cord** (26HE, 31KE, 27N, 30T)

**50-amp. power cord, shoreline/generator automatic changeover switch** (35B, 35F)

**PowerLine® Energy Management System** (27N, 35B, 35F)

**4,000-watt Cummins Onan® MicroQuiet™ gas generator** (26HE, 31KE, 27N, 30T)

**5,500-watt Cummins Onan Marquis Gold™ gas generator** (35B, 35F)

**Two deep-cycle Group 24 batteries**

**Battery disconnect system** (chassis) (NA 26HE, 31KE)

**Battery disconnect system** (coach)

**Automatic dual-battery charge control**

**Auxiliary start circuit**

#### OPTIONAL EQUIPMENT

1,000-watt AC/DC inverter w/remote panel (NA 26HE, 31KE)

## Plumbing System

**LPG accessory connection** (patio area) (NA 26HE, 31KE)

**Holding-tank flushing system** (black tank only) (NA 26HE, 31KE)

**Service Center** colored labels, cable TV input, pressurized city water hookup w/diverter valve, drainage valves, exterior wash station w/pump switch (NA 26HE, 31KE), portable satellite dish hookup, power cord, 10' sewer hose

**6-gallon LP water heater w/electronic ignition** (26HE, 31KE)

**6-gallon 110V/LP water heater w/motoraid** (27N, 30T, 35B, 35F)

**Heated holding-tank compartment**

**Permanent-mount LP tank w/gauge**

**On-demand water pump**

**TrueLevel™ holding-tank monitoring system**

**Winterization Package** water heater bypass valve and siphon tube

**Gravity tank fill w/lockable door** (NA 26HE, 31KE)

## Safety

**Child seat tether anchor** (forward facing dinette seat)

**LP, smoke and carbon monoxide detectors**

**10 BC fire extinguisher**

**Ground fault interrupter**

**High-mount brake lamp**

## Warranty<sup>7</sup>

**12-month/15,000-mile basic limited warranty<sup>8</sup>**

**36-month/36,000-mile limited warranty on structure<sup>8</sup>**

**10-year limited parts-and-labor warranty on roof skin<sup>8</sup>**

<sup>1</sup> The height of each model is measured to the top of the tallest standard feature and is based on the curb weight of a typically equipped unit. The actual height of your vehicle may vary by several inches depending on chassis or equipment variations. Please check with your dealer for further information.

<sup>2</sup> The floorplans feature a wide-body design – over 96" in making your purchase decision, you should be aware that some states restrict access on some or all state roads to 96" in body width. Before making your purchase decision, you should confirm the road usage laws in the states of interest to you.

<sup>3</sup> The load capacity of your motor home is designated by weight, not by volume, so you cannot necessarily use all available space when loading your motor home.

<sup>4</sup> Capacities are based on measurements prior to tank installation. Slight capacity variations can result due to installation applications.

<sup>5</sup> Capacities shown are tank manufacturer's listed water capacity (WC). Actual filled LP capacity is 80% of listing due to overfilling prevention device on tank.

<sup>6</sup> Actual towing capacity is dependent on your particular loading and towing circumstances which includes the GVWR, GAWR, and GCWR as well as adequate trailer brakes. Please refer to the Operator's Manual of your vehicle for further towing information.

<sup>7</sup> See separate chassis warranty.

<sup>8</sup> See your dealer for complete warranty information.

NA Not Available

Not all items available in combination. See dealer for details.

Winnebago Industries™ continuing program of product improvement makes specifications, equipment, model availability, and prices subject to change without notice. Published content reflects the most current product information at time of printing. Please consult your dealer for individual vehicle features and specifications.



**Powered ventilator fan** (lounge, non-power 26HE, 31KE)

**Powered ventilator roof vent** (27N bedroom)

**Powered roof vent** (bath)

**Tinted windows**

**LED lights** (NA 26HE, 31KE)

**Electric fireplace** (35F)

#### OPTIONAL EQUIPMENT

**46" HDTV** (27N, 35B)

**StudioLoft™** (NA 26HE)

**Dining table/buffet/chairs w/retractable 39" HDTV** (30T)

**32" HDTV** (27N, 35B)

**Tinted, dual-glazed, thermo-insulated windows** (NA 26HE, 31KE)

**Vinyl floorcovering** (excludes cab, slideroom floor and bedroom) (30T)

## Galley

**Corian® countertops** (NA 26HE, 31KE)

**Laminate countertops** (26HE, 31KE)

**2-door refrigerator/freezer**

**Microwave oven** (26HE, 31KE, 30T)

**Microwave oven w/range fan** (27N, 35B, 35F)

**3-burner range w/oven** (26HE, 31KE)

**3-burner range top w/storage below** (27N, 30T, 35B, 35F)

**Vented range hood** (26HE, 31KE, 30T)

#### OPTIONAL EQUIPMENT

**3-burner range w/oven** (27N, 30T, 35B, 35F)

**Microwave/convection oven** (30T)

**Microwave/convection oven w/range fan** (27N, 35B, 35F)

**4-door refrigerator/freezer w/icemaker** (35B, 35F)

## Bath

**Laminate countertop**

**Flexible showerhead**

**Textured glass shower door**

**Skylight**

## Bedroom

**Queen bed w/innerspring mattress and storage below**

**Bedsread** (26HE, 31KE)

**Bedsread, pillows and shams** (27N, 30T, 35B, 35F)

**Storage area below bed**

**Bunk beds w/foam mattresses, mattress covers and privacy curtains** (35B)

#### OPTIONAL EQUIPMENT

**Two DVD players w/10.1" LCD monitors and headphones** (35B bunk beds)

**22" HDTV w/cable wall input** (27N, 30T, 35F)

**26" HDTV w/cable wall input** (35B)

## Exterior

**Premium taupe-colored high-gloss sidewall skin**

**Automatic entrance door steps**

**Powered patio awning**

**Mud flaps**

**Porch light**

**Lighted storage compartments** (in select compartments)

**Ladder** (NA 26HE, 31KE)

#### OPTIONAL EQUIPMENT

**Lower front protective mask** (w/full-body paint only)

**Entertainment Center** AM/FM stereo, CD player, remote, AC duplex, DC receptacle, removable TV table, speakers and lockable compartment (30T)

**Entertainment Center** 32" HDTV w/remote, AM/FM stereo w/DVD player w/remote, speakers (27N, 35B, 35F)

## Heating & Cooling System

**14,800 BTU roof-mount air conditioner** (26HE, 31KE, 27N, 30T)

**Two high-efficiency roof-mount air conditioners w/Energy Management System** (35B, 35F)

**30,000 BTU low-profile furnace** (26HE, 31KE, 27N, 30T)

**40,000 BTU low-profile furnace** (35B, 35F)

#### OPTIONAL EQUIPMENT

**A/C heat pump** (27N, 30T)

**Two high-efficiency A/C heat pumps** (35B, 35F)

## Electrical System

**AC/DC load center, 45-amp. converter/charger** (26HE, 31KE, 27N, 30T)

**AC/DC electrical distribution system, 45-amp. converter/charger** (35B, 35F)

**30-amp. power cord** (26HE, 31KE, 27N, 30T)

**50-amp. power cord, shoreline/generator automatic changeover switch** (35B, 35F)

**PowerLine® Energy Management System** (27N, 35B, 35F)

**4,000-watt Cummins Onan® MicroQuiet™ gas generator** (26HE, 31KE, 27N, 30T)

**5,500-watt Cummins Onan Marquis Gold™ gas generator** (35B, 35F)

**Two deep-cycle Group 24 batteries**

**Battery disconnect system** (chassis) (NA 26HE, 31KE)

**Battery disconnect system** (coach)

**Automatic dual-battery charge control**

**Auxiliary start circuit**

#### OPTIONAL EQUIPMENT

**1,000-watt AC/DC inverter w/remote panel** (NA 26HE, 31KE)

## Plumbing System

**LPG accessory connection** (patio area) (NA 26HE, 31KE)

**Holding-tank flushing system** (black tank only) (NA 26HE, 31KE)

**Service Center** colored labels, cable TV input, pressurized city water hookup w/diverter valve, drainage valves, exterior wash station w/pump switch (NA 26HE, 31KE), portable satellite dish hookup, power cord, 10' sewer hose

**6-gallon LP water heater w/electronic ignition** (26HE, 31KE)

**6-gallon 110V/LP water heater w/motoraid** (27N, 30T, 35B, 35F)

**Heated holding-tank compartment**

**Permanent-mount LP tank w/gauge**

**On-demand water pump**

**TrueLevel™ holding-tank monitoring system**

**Winterization Package** water heater bypass valve and siphon tube

**Gravity tank fill w/lockable door** (NA 26HE, 31KE)

## Safety

**Child seat tether anchor** (forward facing dinette seat)

**LP, smoke and carbon monoxide detectors**

**10 BC fire extinguisher**

**Ground fault interrupter**

**High-mount brake lamp**

## Warranty<sup>7</sup>

**12-month/15,000-mile basic limited warranty<sup>8</sup>**

**36-month/36,000-mile limited warranty on structure<sup>8</sup>**

**10-year limited parts-and-labor warranty on roof skin<sup>8</sup>**

<sup>1</sup> The height of each model is measured to the top of the tallest standard feature and is based on the curb weight of a typically equipped unit. The actual height of your vehicle may vary by several inches depending on chassis or equipment variations. Please check with your dealer for further information.

<sup>2</sup> The floorplans feature a wide-body design -- over 96" in making your purchase decision, you should be aware that some states restrict access on some or all state roads to 96" in body width. Before making your purchase decision, you should confirm the road usage laws in the states of interest to you.

<sup>3</sup> The load capacity of your motor home is designated by weight, not by volume, so you cannot necessarily use all available space when loading your motor home.

<sup>4</sup> Capacities are based on measurements prior to tank installation. Slight capacity variations can result due to installation applications.

<sup>5</sup> Capacities shown are tank manufacturer's listed water capacity (WC). Actual filled LP capacity is 80% of listing due to overfilling prevention device on tank.

<sup>6</sup> Actual towing capacity is dependent on your particular loading and towing circumstances which includes the GVWR, GAWR, and GCWR as well as adequate trailer brakes. Please refer to the Operator's Manual of your vehicle for further towing information.

<sup>7</sup> See separate chassis warranty.

<sup>8</sup> See your dealer for complete warranty information.

NA Not Available

Not all items available in combination. See dealer for details.

Winnebago Industries™ continuing program of product improvement makes specifications, equipment, model availability, and prices subject to change without notice. Published content reflects the most current product information at time of printing. Please consult your dealer for individual vehicle features and specifications.



## GoWinnebago.com Has All The Answers

Visit [GoWinnebago.com](http://GoWinnebago.com) on your computer, smartphone or tablet for the latest product information and updates.



## **PREFERRED CARE PROGRAM**

We back our motorhomes with best-in-class support both before *and* after the sale:

- 12-month/15,000-mile basic limited warranty
- 36-month/36,000-mile limited warranty on structure
- 10-year limited parts-and-labor warranty on roof skin
- Complimentary 24-hour roadside assistance program



**TRIP Saver**  
FAST TRACK PARTS

- TripSaver® Fast Track Parts guarantees that in-stock warranty parts ship directly to your dealer within 24 hours
- National dealer service network



**WIT CLUB**

## Join the Club, Join the Fun

As a Winnebago motorhome owner, you are invited to join the WIT Club. It's a great way to take full advantage of your new coach and meet fun-loving WIT Club members from across the country who make motorhome adventures a way of life.



### Members enjoy:

- Caravans and rallies
- Newsletters
- Local and state group activities
- RV travel benefits

See more at [WITclub.com](http://WITclub.com)



### Grand National Rally

In 1969, two things happened: Neil Armstrong took mankind's first steps on the moon, and Winnebago Industries' WIT Club launched its first Grand National Rally in Forest City, Iowa. Every year since then, thousands of rally-goers connect with old friends to enjoy concerts, tours, activities, and more. Blast off for an adventurous week in July to celebrate 45 years of interstate land roving at the 2014 "Out of This World" Grand National Rally. It's a mission you'll never forget!



# GoWinnebago.com Has All The Answers

Visit [GoWinnebago.com](http://GoWinnebago.com) on your computer, smartphone or tablet for the latest product information and updates.



# **PREFERRED CARE PROGRAM**

We back our motorhomes with best-in-class support both before *and* after the sale:

- 12-month/15,000-mile basic limited warranty
- 36-month/36,000-mile limited warranty on structure
- 10-year limited parts-and-labor warranty on roof skin
- Complimentary 24-hour roadside assistance program



**TRIP Saver**  
FAST TRACK PARTS

- TripSaver® Fast Track Parts guarantees that in-stock warranty parts ship directly to your dealer within 24 hours
- National dealer service network



**WIT CLUB**

## Join the Club, Join the Fun

As a Winnebago motorhome owner, you are invited to join the WIT Club. It's a great way to take full advantage of your new coach and meet fun-loving WIT Club members from across the country who make motorhome adventures a way of life.



### Members enjoy:

- Caravans and rallies
- Newsletters
- Local and state group activities
- RV travel benefits

See more at [WITclub.com](http://WITclub.com)



### Grand National Rally

In 1969, two things happened: Neil Armstrong took mankind's first steps on the moon, and Winnebago Industries' WIT Club launched its first Grand National Rally in Forest City, Iowa. Every year since then, thousands of rally-goers connect with old friends to enjoy concerts, tours, activities, and more. Blast off for an adventurous week in July to celebrate 45 years of interstate land roving at the 2014 "Out of This World" Grand National Rally. It's a mission you'll never forget!