

Infinity

CLASS A MOTORHOME 2005



Infinity Redefines Luxury Motorhome Travel

FULL 84"
CEILING
HEIGHT



Shown with Ryan Sage interior, North Beach Wheat carpet and Cherry cabinetry option.



Enter a whole new world of classic elegance in the Infinity Class A motorhome. You'll find exceptional quality. Classic appointments. Exquisite interiors.

The Infinity surrounds you in a magnificent environment of unmatched comfort and world-class luxury. With a choice of innovative

floorplans, contemporary interiors and distinctive exteriors—you'll find a model to meet your needs, tastes and lifestyle.

When you experience the Infinity, it's easy to see that nothing else will measure up. In comfort. In quality. In value.

Shown with Half Moon Slate interior, North Beach Wheat carpet, Maple cabinet option and optional UltraLeather™ driver and passenger chairs and recliner. The front overhead area features a 27" flat screen color television and ample storage cabinets with glass inserts on either side. The cockpit area is designed for maximum driver and passenger comfort. A convenient computer hook-up (including a 110V outlet and phone jack), is located on the passenger side. The large panoramic windshield provides added driver safety.



The standard slide-out pantry offers plenty of handy storage for almost any size food item. When closed, it holds all of the items securely in place—even when on the road.

Shown with Half Moon Slate interior, Maple cabinetry option and optional side-by-side refrigerator with raised panel inserts.

All Infinity motorhomes are built to meet stringent high-quality standards—from the inside out. You can choose from a variety of models that feature double, triple and quadruple slideouts to dramatically expand your living area.

Model 38E features the original quadruple slide-out design and features a standard washer/dryer prep so you can easily add the optional washer/dryer combination.

You'll find that the kitchen is well designed to meet your food planning and preparation needs. The comfortable living area is perfect for relaxing after a full day of activities or entertaining guests.

Standard features include premium quality laminate flooring in the galley, bath and entry way; plush wall-to-wall carpeting in the living area and bedroom; and contemporary beveled mirrors in the living area.

Interior Decor Packages



Honey Oak



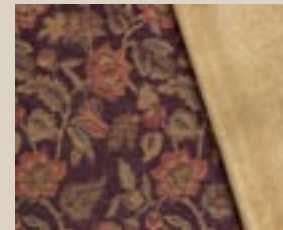
Maple



Cherry



North Beach Wheat carpet



Hearthstone Raven



Half Moon Slate

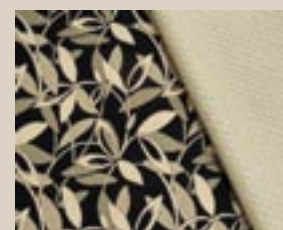


Illustration Ebony



Ryan Sage



Shown with Half Moon Slate interior, North Beach Wheat carpet and Maple cabinetry option. The optional legless dinette features a beautiful laminate tabletop with Corian® edge, two upholstered chairs and two folding chairs. The decorative buffet provides added countertop space when entertaining and cabinet storage underneath.

A Tranquil Escape for Rest and Relaxation



Shown with Half Moon Slate interior, North Beach Wheat carpet and Cherry cabinet option. Model 36A features a handsomely fashioned French door and window that add a touch of style and beauty.



Model 36A shown with Half Moon Slate interior and Cherry cabinet option. It features a vanity with mirror and chair, plus a cozy upholstered lounge chair. There is also plenty of cabinet and wardrobe storage to accommodate your personal belongings.

The spacious bedroom can provide an escape from a busy day—with all the amenities for you to relax in comfort and privacy. Attractive bedroom appointments include a queen-size bed, inner spring mattress, wood headboard with beveled mirrors, color-coordinated bedspread and pillow shams.

The standard bathroom features a skylight in the shower, attractive medicine cabinet with beveled glass door and china toilet. Model 36Z features a full bath in the master bedroom and half bath off of the main living area. Model 38E has two entry doors to the bath area—one from the hallway and one from the bedroom.



The full rear bath on Model 36Z is shown with Hearthstone Raven interior and Cherry cabinetry option.



Shown with Titanium exterior paint option.



Shown with Topaz exterior paint option.



Shown with standard Desert Sand exterior graphics/paint package.



Shown with standard Pewter Metallic exterior graphics/paint package.

The Four Winds Quality Difference

What sets Four Winds International apart from other manufacturers? It's our level of quality built into all of our motorhomes. It's the value integrated into all of our designs. It's a dedication to innovation so we can continually improve the quality and value of our motorhomes year after year.

Our ultimate goal is to build the right combination of quality, functionality and durability into each recreational vehicle for an extraordinary value. It's a commitment we take seriously, and one that you can depend on year after year.

The Difference Is Clear

At Four Winds, we strive to go beyond your expectations in every Four Winds recreational vehicle so you can enjoy a better quality of life when traveling on the road.

All Four Winds motorhomes come with a full two-year, 24,000-mile bumper-to-bumper limited warranty. Our nationwide dealer network is fully equipped and trained to meet your service needs. The experienced Four Winds support staff is available to provide assistance on all technical, service and warranty issues.

Four Winds continues in our commitment to provide high-quality products and support services that results in customer satisfaction—one customer at a time. So whether you are a first-time recreational vehicle owner, or a seasoned one, we want you to enjoy many years of adventures in your Four Winds motorhome. *This is the Four Winds difference.*



Why Thor Is Your Best RV Value

Thor Industries, Inc., listed on the New York Stock Exchange (THO), proudly traces its history back over 70 years to the pioneering days of the recreational vehicle industry with the founding of Airstream, the industry's oldest and most renowned brand. Our total commitment to quality and our philosophy of putting our customers first has led to our continuous growth.

Today, Thor is the largest builder of recreational vehicles. Thor's strong financial condition and years of solid growth are your assurance that we will be here to serve you for years to come. We think this extra peace of mind is important when you are making a significant investment. Because our customers are always #1 with us, we work harder than other manufacturers to satisfy you.

New Convenience Package



The new Convenience Package option offers a variety of components that will come in handy while on the road. It features a set of four two-way radios, rechargeable hand-held vacuum cleaner, flashlight and recharging unit. It also includes valve stem extenders which allows you to easily check the tire pressure on the inside rear tire and fill it if necessary.



Infinity Standard and Optional Features

Body Construction/ Exterior

Standard

- 3" steel welded floor system with residential style in-floor heating
- Vacu-Bond laminated roof, walls and floors with high-density block foam insulation
- Fully welded tubular aluminum roof and sidewall cage construction
- Wide body design
- GelCoat fiberglass exterior
- Choice of exterior graphics/paint packages
- Recessed side docking lights
- Electro-galvanized steel strapping laminated into walls and ceiling ensures superior strength for mounting cabinets, fixtures and other appliances
- Air conditioning ductwork molded into roof insulation
- TuffPex® plumbing system with brass fittings
- Heated and enclosed utility station
- HWH semi-automatic push-button hydraulic leveling jacks and slide-outs
- Premium one-piece TPO roof—Energy Star approved and labeled
- Rubber tread entry steps
- Automatic electric entrance step
- Exterior slide-out corner guards to protect against sharp edges
- Factory installed patio awning with weather shield
- Roof ladder
- Exterior shower

Options

- Choice of full-body paint packages (includes chrome mirrors, acrylic patio awning and fiberglass slide roof toppers with covers)
- 3M film front mask (full-body paint package only)
- One-Touch automatic acrylic patio awning
- Infinity chrome mud flap

Automotive/Cockpit

Standard

- Double steel plated fire wall, cab floor and steel reinforced dash
- Factory installed 5,000-lb. hitch
- Large panoramic windshield

- Enlarged driver and passenger windows
- Wood grain dash insert and convenient drink tray
- Dash fans
- Heated, remote bus-style exterior mirrors
- Passenger side computer hook-ups including a 110V outlet and phone jack
- One-piece fiberglass front and rear caps
- Low profile engine cover
- Wheel liners
- Fog lights
- Large 22.5" tires

Options

- UltraLeather™ Flexsteel® driver and passenger captain's chairs
- Six-way power driver and passenger seats
- Six-way power driver's seat
- Back-up camera with audio
- GPS (Global Positioning System) navigation system with color back-up camera
- Citizen's band radio
- Power sun visors

Interior

Standard

- Choice of interior decor packages
- Full 84" ceiling height
- High-quality laminate flooring (galley, bath and entry way)
- Wall-to-wall carpeting (living area and bedroom)
- 13,500 BTU low profile roof air conditioner—front
- 13,500 BTU low profile roof air conditioner—rear
- Honey Oak cabinetry with adjustable shelves and no center stile
- Raised panel wall and base cabinet doors and drawer fronts
- Residential style hidden hinged side opening cabinetry
- Hardware with Brushed Nickel finish
- Hardwood end panels
- Day/night shades throughout
- "Soft-Touch" vinyl ceiling
- Windshield privacy curtain
- Contemporary 6" beveled mirrors in living area

Options

- Cherry cabinetry
- Maple cabinetry
- Fantastic® fan
- Dual pane windows
- 13,500 BTU low profile roof air conditioner with heat strips and solar panel
- Fabric hide-a-bed sofa
- UltraLeather™ Flexsteel® hide-a-bed sofa with inner spring mattress
- UltraLeather™ Flexsteel® Magic Bed sofa
- Leather Euro recliner with ottoman in bedroom in place of fabric chair with ottoman (36A only)
- UltraLeather™ Flexsteel® Euro recliner with ottoman in place of barrel chair
- Fabric recliner in place of barrel chair
- UltraLeather™ recliner in place of barrel chair

Galley

Standard

- 8-cubic-foot double door refrigerator
- Convection microwave with high-output gas range top and 3 sealed burners and trash receptacle
- Contemporary 6" beveled mirrors on backsplash
- Single lever kitchen faucet
- Large stainless steel double bowl sink
- Curved kitchen countertop in new true Corian® color
- Dovetail drawers in kitchen base
- Slide-out pantry (not available with 12-cubic-foot refrigerator)
- Silverware tray
- Booth dinette with cup holders

Options

- 12-cubic-foot double door refrigerator with ice maker and raised panel inserts (not available with slide-out pantry)

- 12-cubic-foot Stainless Steel double door refrigerator with ice maker (not available with slide-out pantry)
- Range top with 3 sealed burners and oven
- Legless free-standing dinette with buffet and four chairs

Entertainment

Standard

- Cable television hook-up
- 27" flat screen front color television—front overhead
- 20" flat screen color television—bedroom
- Television cabinet—bedroom
- XM satellite ready AM/FM stereo with compact disc player

Options

- Home theater system with DVD player
- Video cassette recorder
- DVD player
- Satellite dish

Bedroom/Bathroom

Standard

- Inner spring mattress
- Bedspread and pillow shams
- Attractive wood headboard with beveled mirrors
- Vanity with stool
- Vanity with chair and additional lounge chair (36A only)
- Classic French bedroom door and window (36A only)
- Convenient residential height bathroom countertop
- Power bath vent
- China toilet
- Contemporary medicine cabinet with beveled glass door
- Skylight in shower
- Choice of one-piece fiberglass shower or garden tub with decorative fixtures
- Glass shower doors

Safety/Convenience

Standard

- Entry door with deadbolt lock
- Telephone jacks
- One-Stop™ Systems Center
- Lighted exterior grab handle
- Smoke detector

- Fire extinguisher
- LPG detector
- Carbon monoxide detector
- Three-point seatbelts for the driver and passenger and seatbelts throughout
- Washer/dryer prep (36Z and 38E only)

Options

- Washer/dryer combination (36Z and 38E only)
- Convenience package includes set of 4 two-way radios, rechargeable hand-held vacuum cleaner, rechargeable flashlight and valve stem extenders
- Central vacuum system

Electrical Systems

Standard

- 5.5 KW Guardian generator
- 50-amp service
- Marine-type detachable power cord
- Satellite dish
- 10-gallon gas/electric water heater
- Water heater bypass system
- Battery disconnect switch
- Emergency start switch
- Second auxiliary battery
- Water filtration system

Options

- 5.5 KW Onan® generator
- 7.0 KW Onan® generator
- 2,000-watt inverter with 7.0 KW Onan® generator (38E only)

Storage Areas

Standard

- Large pass-through storage compartment
- Seamless Roto-Cast® storage compartments
- Deluxe heavily insulated aluminum compartment doors
- In-floor slide system allowing for full height storage compartments
- Heated and enclosed Roto-Cast® holding tanks

Added Convenience Features...An Infinity Plus



Ample pass-through exterior storage compartment offers plenty of extra storage for large, bulky items as well as small personal belongings. The fully insulated, locking metal doors are easy to open, and ensure convenient, safe storage for your valuable belongings while traveling.



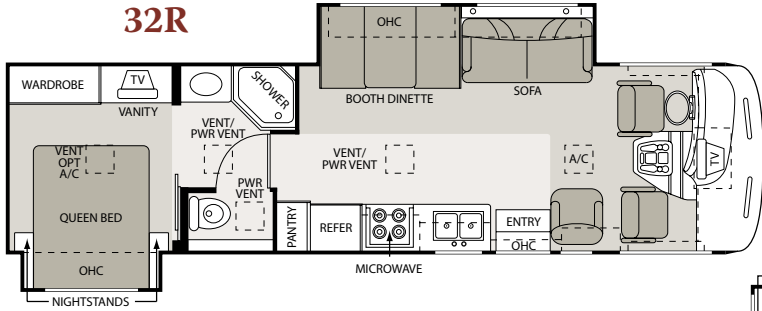
The Below Floor Utility Station is securely enclosed in a seamless Roto-Cast® storage compartment. It houses phone, cable, electrical and plumbing connections where they are kept protected and dry. Everything is clearly marked and simple to connect so set-up and tear-down is a snap.



The standard One-Stop™ System Center houses commonly used switches and controls all in one convenient location. These include the systems indicator (shows holding tank and battery charge levels), water heater control switches, thermostat, generator control and hour meter, and slide-out control.

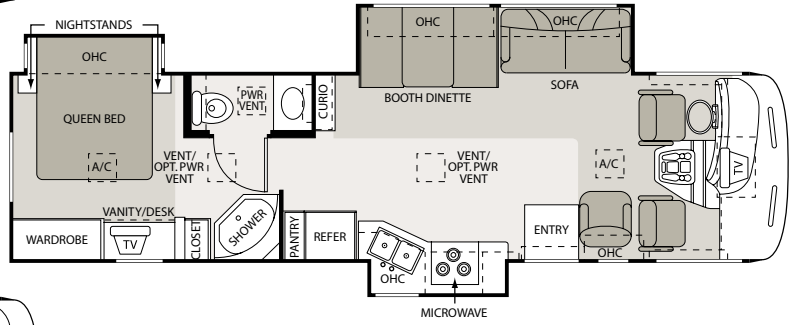
Infinity Floorplans

32R

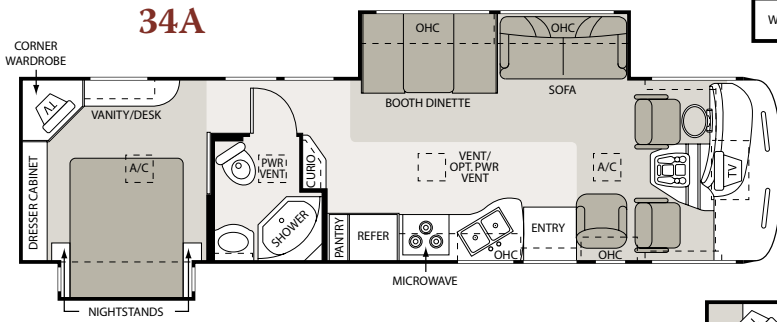


■ Furniture ■ Carpet ■ Linoleum

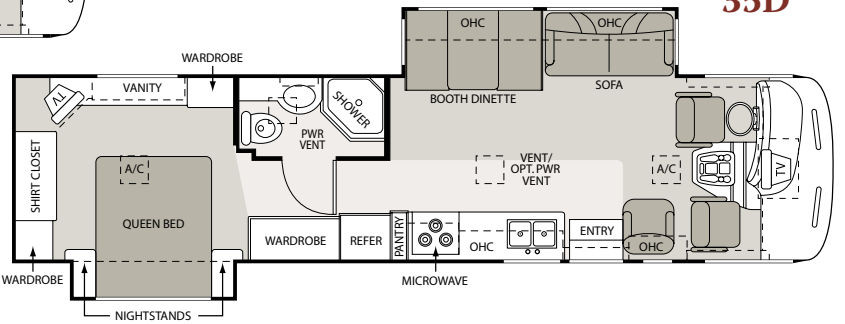
34N



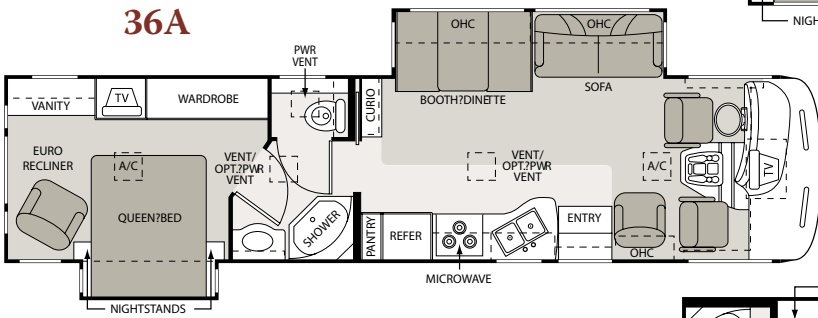
34A



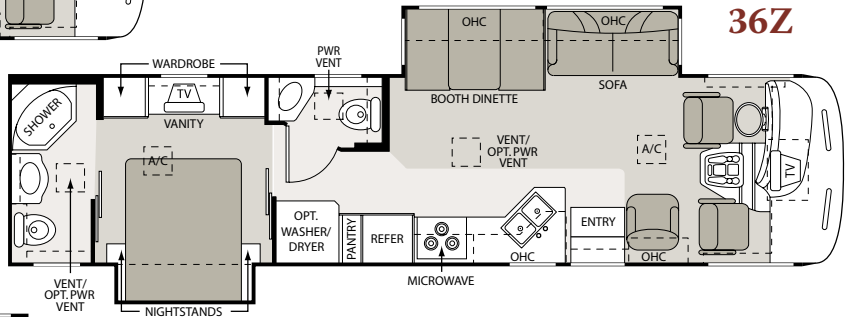
35D



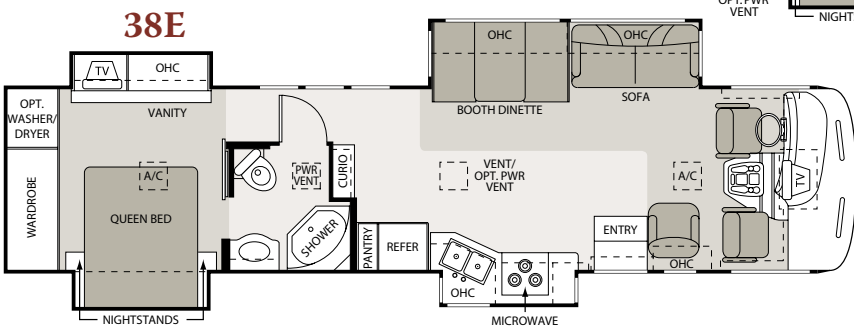
36A



36Z



38E



2005 Infinity Specifications

MODEL	32R	34A	34N	35D	36A	36Z	38E
WEIGHT RATING (LBS.)							
Workhorse Chassis 8.1L Vortec	V8	V8	V8	V8	V8	V8	V8
Gross Vehicle (GVWR)	22,000	22,000	22,000	22,000	22,000	22,000	24,000
Gross Axle - Front (GAWR)	8,000	8,000	8,000	8,500	7,500	7,500	9,000
Gross Axle - Rear (GAWR)	14,500	14,500	14,500	15,000	14,500	14,500	15,500
Dry (UVW)	18,481	19,775	19,660	19,848	19,565	19,175	21,315
Gross Combined (GCWR)	26,000	26,000	26,000	26,000	26,000	26,000	30,000
Net Carrying Capacity (NCC)	3,519	2,225	2,340	2,152	2,435	2,825	2,685
MEASUREMENTS							
Wheel Base	208"	208"	208"	228"	235"	235"	252"
Exterior Length	33'2"	35'2"	35'2"	37'	37'	37'	38'10"
Exterior Height (with air conditioner)	12'	12'	12'	12'	12'	12'	12'
Exterior Width	99"	99"	99"	99"	99"	99"	99"
Interior Width	96"	96"	96"	96"	96"	96"	96"
Interior Height	84"	84"	84"	84"	84"	84"	84"
Awning Size	17'	17'	17'	18'	19'	18'	20'
TANK CAPACITIES							
Fuel (Gallons)	75	75	75	75	75	75	75
LPG (Pounds)	100	100	100	100	100	100	100
Fresh Water (Gallons)	75	60	60	60	60	60	60
Waste Water (Gallons)	55	48	48	48	48	48	48
Gray Water (Gallons)	56	49	49	49	49	49	49
Water Heater (Gallons)	10	10	10	10	10	10	10
Furnace BTUs	35,000	35,000	35,000	35,000	35,000	35,000	35,000

WARRANTY...The Industry's Best Warranty—By Far!

We're so confident in the design and construction of our products that they are covered by Thor's exclusive Full Two-Year Limited Warranty* "bumper-to-bumper" coverage to protect your RV investment. The best protection in the RV industry—by far!

*For complete information see the warranty provided with your vehicle.

VEHICLE LOADING: Every effort has been made to provide the greatest number of options for the recreation vehicle owner. Along with these choices comes the responsibility to manage the loads that are imposed by the choices so that they remain within the manufacturer's specified chassis weight limits. Do not overload the recreation vehicle.

DRY WEIGHTS: Based on standard features; optional equipment not included. Net carrying capacity (NCC) determined by subtracting unloaded vehicle weight (UVW) from gross vehicle weight (GVWR) and includes fluids, options, and cargo. Liquid capacities and weights are approximations only.

WARNING: This information is intended as a guide only. Weights of individual vehicles may vary. Consult your owner's manual for complete loading, weighing, and towing instructions.

IMPORTANT: Towing capacity may vary by chassis model, floorplan, options and loading of the vehicle. This may result in a towing capacity which is less than the maximum capacity of the hitch. Do not exceed the vehicle's Gross Combined Weight Rating (GCWR), or the hitch rating. A separate functioning brake system is required for any towed vehicle or trailer weighing more than 1,000 lbs. (450 KG) when fully loaded.



This brochure is printed on recycled paper as part of Thor's corporate effort to minimize waste and conserve our natural resources. Providing safe, fuel-efficient recreational vehicles is Thor's way of further demonstrating our role as the industry leader in safeguarding our nation's environment.

Product information, specifications, and photography in this brochure were as accurate as possible at time of printing. Photographs may contain some features that are optional on your vehicle. Since we continually strive to improve our products, actual products may differ. Prices and specifications are subject to change without notice. All capacities are approximate and dimensions are nominal. Some features or options may be different or unavailable in Canada.

UltraLeather™ is a registered trademark of Ultrafabrics, LLC



P.O. Box 1486 • Elkhart, Indiana 46515-1486

Phone: 574-266-1111 • Fax: 574-294-8971 • www.fourwinds-rv.com