

10 SERIES
(under 2,000 LBS)



16 SERIES
(under 3,500 LBS)



19 SERIES
(under 5,000 LBS)



NOBO
NO BOUNDARIES



Kyna Williams / NB19.8



WHAT IF THERE WERE NO•BOUNDARIES?

Designed for those who push limits, the versatile and exceptionally light weight No Boundaries (**NOBO**) travel trailer is rugged enough for any outdoor enthusiast. It's innovative and durable rooftop Rhino-Rack offers adaptable storage for Kayaks, mountain bikes, snowboards, fishing equipment, or just simply extra luggage. Towable by both 4- and 6-cylinder vehicles, **NOBO** is ready when you are.





**JBL PORTABLE
BLUETOOTH SPEAKER**



**MORRYDE STEPS
W/LED ENTRY STEP LIGHT
(N/A ON 16 SERIES)**



**OUTDOOR KITCHEN
(STANDARD ON 10.5/10.6)**



**SHOWERMISER
(16/19 SERIES ONLY)**



**CENTRAL VAC SYSTEM
W/LED BACKLIT VAC PORT
NO HOSES NEEDED**



**WELDED ALUMINUM BED FRAMING
(16/19 SERIES ONLY)**



BACKUP CAMERA PREP



**ALL-NEW 16/19 SERIES BUSH KITCHEN
EXTERIOR FLAT TOP GRILL, HIGH PRESSURE SPRAY PORT,
PREP STATION, SHOWERMISER**



Connor Ray / NB10.6

WHEN YOU LIVE LIFE BY A COMPASS, NOT A CLOCK.

With industry-leading ground clearance, larger diameter tires and a nimble suspension system, you'll be able to explore and set up camp in places that would otherwise be inaccessible. Additionally, the upscale interior focuses on thoughtful, useful design with ample storage and an ergonomic and refreshing living space. **NO·BO** is attractively equipped with both familiar standard equipment as well as fresh features for a truly unforgettable adventure.



NB10.6

SPECIFICATIONS

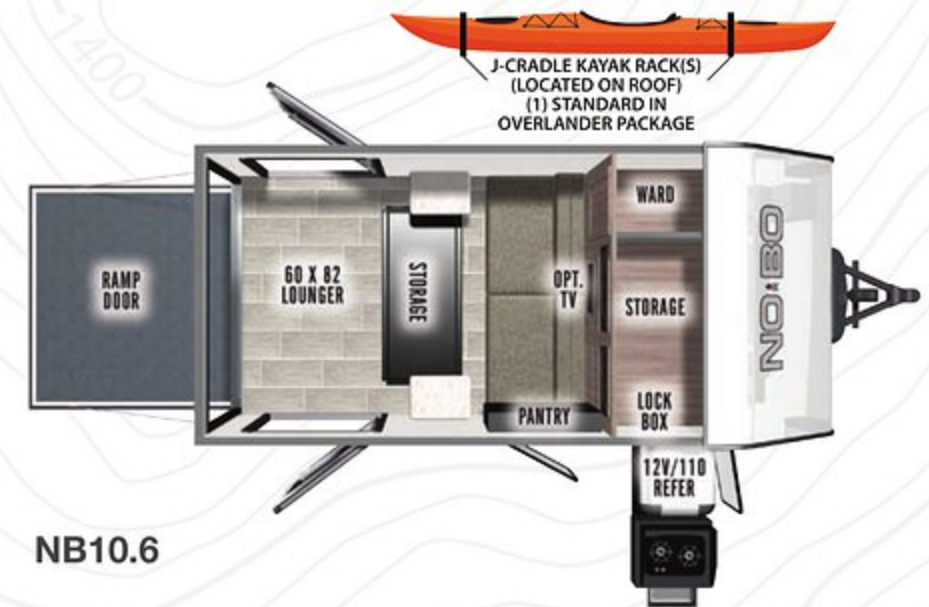
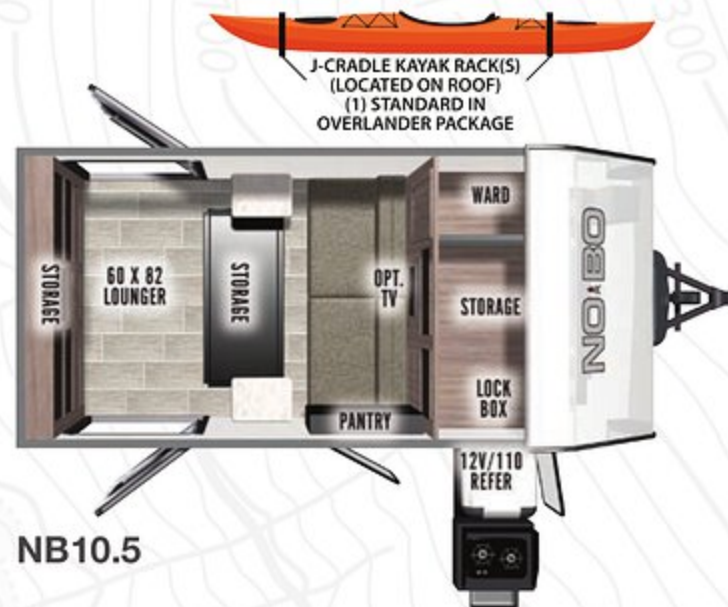
MODEL	NB10.5	NB10.6
Unloaded Vehicle Weight	1570	1763
Hitch Weight (lbs.)	210	236
Cargo Carrying Capacity	2140	1973
Roof Capacity (lbs.)	500	500
Exterior Length	13' 10"	13' 9"
Exterior Width	88"	88"
Exterior Height (w/ A/C)	7' 9"	7' 9"
Fresh Water (gal.)	30	30
Grey Water (gal.)	N/A	N/A
Black Water (gal.)	N/A	N/A

NOTE - Definitions for specifications can be found on the back page of this brochure.



Christopher Johnson / NB10.6

FLOORPLANS



KEY FEATURES: 10.6 can haul a full-size ATV, Standard Enclosed Underbelly, 30 gal. Fresh Water Capacity



10 SERIES STANDARDS/OPTIONS

DISCOVERER PACKAGE

KEY STANDARD EQUIPMENT

JBL Portable Bluetooth Speaker

Complete Interior/Exterior LED Lighting PKG

LED Entry Step Light

1000 Lumen Amber/White Scare Light

Metropolitan Grey Lightweight-Ply Countertops

Stainless Steel Utility Hooks

Bottle Opener

Black Satin Faucet/Door Pulls (where applicable)

High Performance Vinyl Furniture

2-Burner Glass Recessed Cook Top

Black Stainless Steel Sink (where applicable)

Pleated Shades

USB Charging Station

Lamilux 1000 Fiberglass Exterior
Featuring Satin Matte Graphics

Cold Weather Package (Required)

(Some Features N/A 10 Series)

OVERLANDER PACKAGE

Standard RVT Track (Rhino Rack #RTV148)

Two Vortex Bars (Rhino Rack #VA180B)

J-Cradle Kayak Holder (Rhino Rack #S510)

Satin Matte Finish 6-Lug Wheels

Wrapped in All Terrain Tires

OPTIONAL EQUIPMENT

13.5 BTU Low Profile Air Conditioning

5500 BTU Heat Strip
(applicable only with A/C equipped)

Power Tongue Jack w/LED Light

12V LED TV

Pioneer Platform
(IPO Vortex Bars and J-Cradle Kayak Rack)

Hybrid Single Bike Carrier
(Rhino Rack #RBC050)

Snowboard/Ski/Fishing Rod/Paddle Holder
(Rhino Rack #573)

J-Cradle Kayak Holder (Rhino Rack #S510)

One Standard Kayak Holder in Overlander PKG

Batwing Awning

Dinette Package

Ramp Door Screen Door (n/a 10.5)

NOBO Nest - Roof Top Tent



LOAD.



LOUNGE.



DINE.



RELAX.



REST.

REPEAT.



Daniel Stoute / NB16.8

WHEN YOUR NEXT PATH IS OFF THE GRID.

Count on **NO·BO** to take you into uncharted territory. Escape the crowds into the remote rugged wilderness and take your gear with you. Whether in search of a big catch or a big wave, you don't have to leave amenities behind. Explore, get dirty, then return to home base to clean up, relax and recharge.



NB16.8

SPECIFICATIONS

MODEL	NB16.2	NB16.6	NB16.8
Unloaded Vehicle Weight	3284	3346	3264
Hitch Weight (lbs.)	440	382	320
Cargo Carrying Capacity	1556	1417	1541
Roof Capacity (lbs.)	500	500	500
Exterior Length w/o Spare Tire	21' 8"	21' 8"	22' 2"
Exterior Width	96"	96"	96"
Exterior Height (w/ A/C)	9' 11"	9' 11"	9' 11"
Interior Height	78"	78"	78"
Box Width	6' 6"	6' 6"	6' 6"
Fresh Water (gal.)	30	30	30
Grey Water (gal.)	30	30	30
Black Water (gal.)	30	30	30

NOTE - Definitions for specifications can be found on the back page of this brochure.



Amber Spektra / NB16.8



Justin Kast / NB16.6

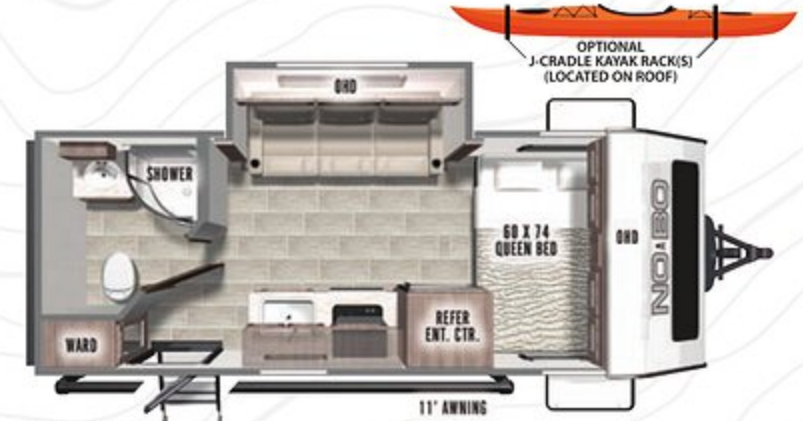
FLOORPLANS



NB16.2



NB16.6



NB16.8



16 SERIES OPTIONS

ACTION PACKAGE (REQUIRED) KEY STANDARD EQUIPMENT

Azdel Exterior Construction
 PVC Roofing Membrane
 Rhino Rack RVT Track
 5 Cu. Ft. Refrigerator
 Aluminum Cage Construction
 Torsion Axle with Industry Leading Ground Clearance
 Panoramic 60" x 22" Front Window
 Roof-Mounted Heavy Duty Solar Prep
 Rear Ladder

OVERLANDER PACKAGE (OPTIONAL)

Standard RVT Track (Rhino Rack #RTV148)
 Two Vortex Bars (Rhino Rack #VA180B)
 J-Cradle Kayak Holder (Rhino Rack #S510)
 Satin Matte Finish 6-Lug Wheels
 Wrapped in All Terrain Tires

OPTIONAL EQUIPMENT

Stainless Steel Convection Microwave Oven
 12V LED TV
 Power Tongue Jack w/LED Light
 Cold Weather Package (Required)
 Custom Front Fiberglass Protective Shell
 JBL Bluetooth Speaker
 Central Vacuum System (Required)
 Solar Package (Heavy-Duty Panel, Inverter, and Charge Controller)
 15K A/C IPO 13.5K A/C
 Bush Kitchen (Required)
 Exterior Flat Top Grill, High Pressure Spray Port, Prep Station, Showermiser



NB16.8



NB16.8



Corey Bozich / NB16.6



OPTIONAL SOLAR PACKAGE SHOWN

NB16.8



Dan Hall / NB19.3

WHEN YOU THRIVE ON PUSHING THE LIMITS.

NO•BO 19 Series delivers a true 7' wide box to align perfectly with smaller tow vehicles. Combine this with our enclosed underbelly and gate valves, panoramic front window, and torsion axle suspension system to offer you the most versatile, capable, and affordable towable on the market. Each **NO•BO** 19 series also features factory installed RVT tracks on the roof, ready to accept and integrate your personalized Rhino Rack Roof System!



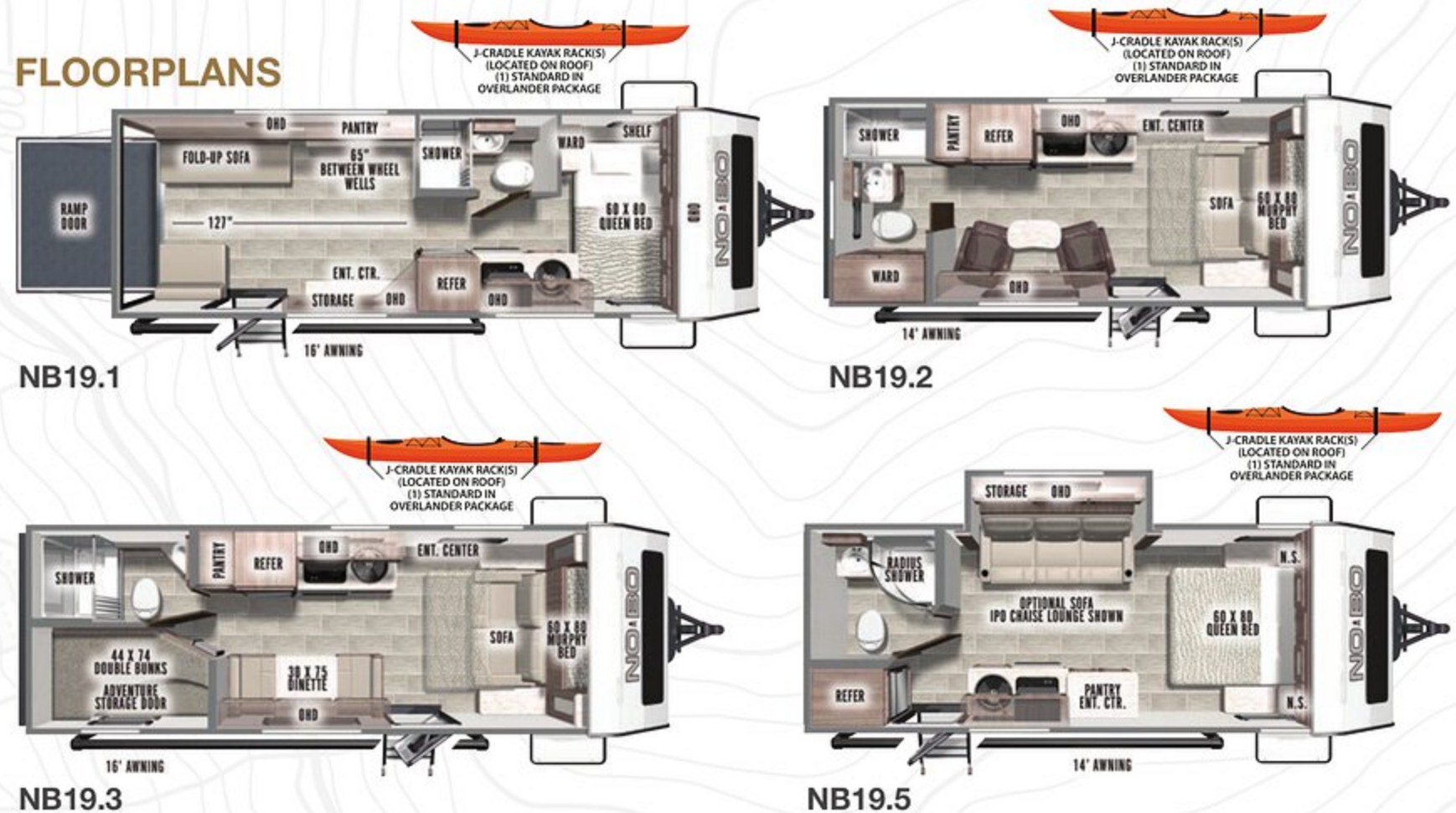
NB19.3

SPECIFICATIONS

MODEL	NB19.1	NB19.2	NB19.3	NB19.5	NB19.6	NB19.7	NB19.8
Unloaded Vehicle Weight	4264	3502	4199	3456	4284	3809	3789
Hitch Weight (lbs.)	720	414	550	365	490	388	395
Cargo Carrying Capacity	3456	1293	3351	1309	3206	979	1006
Roof Capacity (lbs.)	500	500	500	500	500	500	500
Exterior Length w/o Spare Tire	24' 11"	21' 6"	24' 4"	22' 8"	24' 4"	23' 8"	22' 8"
Exterior Width	88"	88"	88"	88"	88"	88"	88"
Exterior Height (w/ A/C)	9' 11"	9' 11"	9' 11"	9' 11"	9' 11"	9' 11"	9' 11"
Interior Height	78"	78"	78"	78"	78"	78"	78"
Fresh Water (gal.)	30	30	30	30	30	30	30
Grey Water (gal.)	30	30	30	30	30	30	30
Black Water (gal.)	30	30	30	30	30	30	30

NOTE - Definitions for specifications can be found on the back page of this brochure.

FLOORPLANS





NOBO
NO BOUNDARIES



19 SERIES STANDARDS/OPTIONS

DISCOVERER PACKAGE

KEY STANDARD EQUIPMENT

- JBL FLIP Portable Bluetooth Speaker
- Complete Interior/Exterior LED Lighting PKG
- LED Entry Step Light
- 1000 Lumen Amber/White Scare Light
- Metropolitan Grey Lightweight-Ply Countertops
- Stainless Steel Utility Hooks
- Bottle Opener
- Black Satin Faucet/Door Pulls (where applicable)
- High Performance Vinyl Furniture
- 2-Burner Glass Recessed Cook Top
- Black Stainless Steel Sink (where applicable)
- Pleated Shades
- USB Charging Station
- RVT Track (Rhino Rack #RVT148)
- Lamilux 1000 Fiberglass Exterior Featuring Satin Matte Graphics

OVERLANDER PACKAGE

- Two Vortex Bars (Rhino Rack #VA180B)
- J-Cradle Kayak Holder (Rhino Rack #S510)
- Satin Matte Finish 6-Lug Wheels
- Wrapped in All Terrain Tires

BACK COUNTRY PACKAGE

- Custom Front Fiberglass Protective Shell
- Featuring Tempered Seamless Panoramic Window
- Roof Mounted Solar Prep
- 13.5 BTU Low Profile Air Conditioning
- Power Awning
- Rear Ladder
- Azdel Exterior Construction

OPTIONAL EQUIPMENT

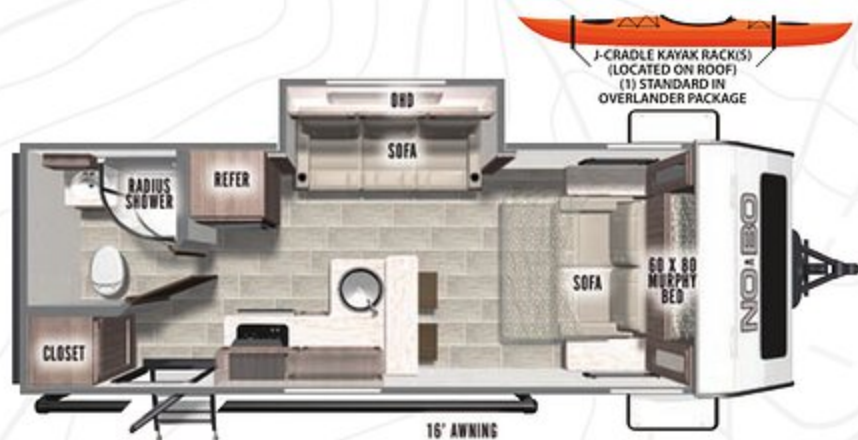
- Stainless Steel Convection Microwave Oven
- 12V LED TV
- Power Tongue Jack w/LED Light
- Cold Weather Package (Required)
- Central Vacuum System (Required)
- Hybrid Single Bike Carrier (Rhino Rack #RBC050)
- Snowboard/Ski/Fishing Rod/Paddle Holder (Rhino Rack #573)
- J-Cradle Kayak Holder (Rhino Rack #S510)
- One Standard Kayak Holder in Overlander PKG
- Solar Package (Heavy-Duty Panel, Inverter, and Charge Controller)
- 15K A/C IPO 13.5K A/C
- Sofa IPO Gaucho (19.5/19.8 only)
- Bush Kitchen (Required)
- Exterior Flat Top Grill, High Pressure Spray Port, Prep Station, Showermiser



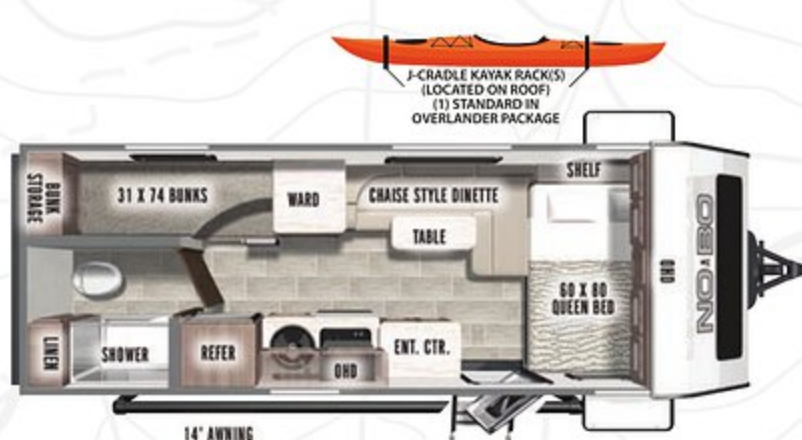
Kenneth Calhoun / NB19.1



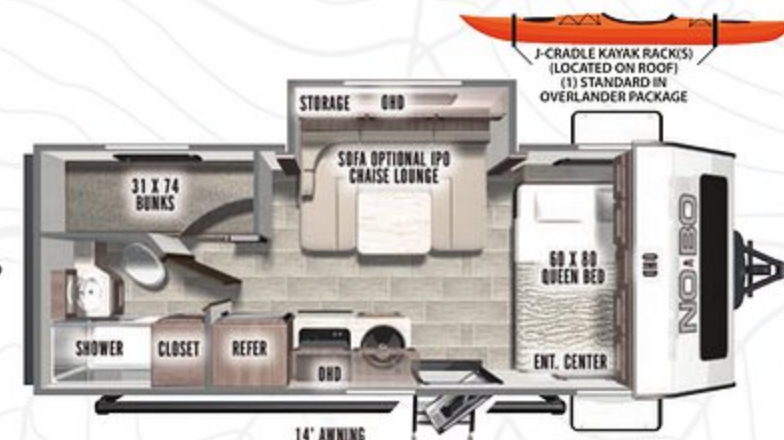
Hillery York / NB19.2



NB19.6



NB19.7



NB19.8



NB19.6



NB19.6



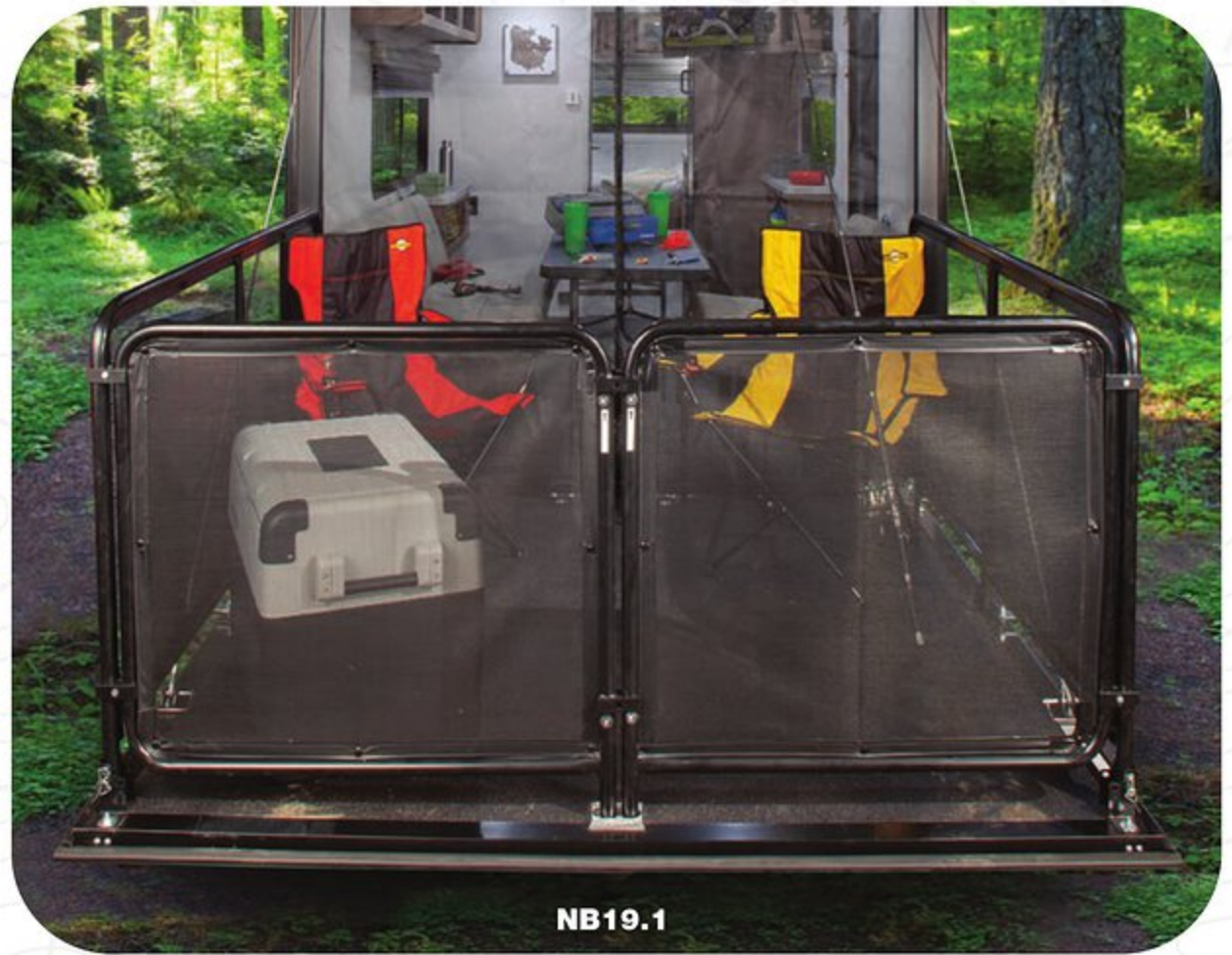
NB19.8



NB19.8



NB19.5



NB19.1



TO THOSE WITH
NO BOUNDARIES



Jeff Siter / NB19.6



Ly Hoang / NB10.6



Alicia King / NB10.6



Tyler MacMillan / NB10.6



Danny Hyde / NB19.6



Maria Ricasa / NB19.7



William Bunting / NB19.5



Forest River Owner "Digital Kit" App
Now you can have your Owner's Manual with you wherever you are. Download our FREE App from the App Store or Google Play and you'll have the information right at your fingertips.

This brochure is complete thanks to the support of our wonderful Retail Customers, as you will see their photos throughout. These customers truly exemplify what it takes to be a NoBo Owner – and for that we are grateful and happy to share in their memories.

GVWR (Gross Vehicle Weight Rating) - is the maximum permissible weight of the unit when fully loaded. It includes all weights, inclusive of all fluids, cargo, optional equipment and accessories. For safety and product performance do NOT exceed the GVWR.
GAWR (Gross Axle Weight Rating) - is the maximum permissible weight, including cargo, fluids, optional equipment and accessories that can be safely supported by a combination of all axles.

UVW (Unloaded Vehicle Weight)* - is the typical weight of the unit as manufactured at the factory. It includes all weight at the unit's axle(s) and tongue or pin and LP Gas. The UVW does not include cargo, fresh potable water, additional optional equipment or dealer installed accessories.

*Estimated Average based on standard build optional equipment.

CCC (Cargo Carrying Capacity)** - is the amount of weight available for fresh potable water, cargo, additional optional equipment and accessories. CCC is equal to GVWR minus UVW. Available CCC should accommodate fresh potable water (8.3 lbs per gallon). Before filling the fresh water tank, empty the black and gray tanks to provide for more cargo capacity.

** Estimated average based on standard build optional equipment.

Each Forest River RV is weighed at the manufacturing facility prior to shipping. A label identifying the unloaded vehicle weight of the actual unit and the cargo carrying capacity is applied to every Forest River RV prior to leaving our facilities. The load capacity of your unit is designated by weight, not by volume, so you cannot necessarily use all available space when loading your unit.

 Find us on **Facebook**

FREE MEMBERSHIP
to Forest River Owners' Group

www.forestriverfrog.com



CUSTOMER SATISFACTION



www.ForestRiverBuyLocal.com

No Boundaries Division
Forest River, Inc.
1702 Century Dr.
Goshen, IN 46528
(574) 642.3119

www.forestriverinc.com/nobo
www.forestriveraccessories.com




PRE-DELIVERY INSPECTION FACILITY

20,000 square feet of quality assurance. The bare essentials for a premium product. This state-of-the-art facility gives immediate daily feedback to production for quality assurance in every unit built.

**24/7 EMERGENCY
ROADSIDE ASSISTANCE
WITH VEHICLE PURCHASE***

<p>TOWING JUMP-STARTS TIRE CHANGES FLUID DELIVERY LOCKOUT SERVICE</p>	<p>WINCH-OUT MOBILE MECHANIC TECHNICAL SUPPORT DEALER LOCATOR SERVICES</p>
---	--



*VALID FOR 1 YEAR FROM DATE OF PURCHASE

Your local  dealer



Learn More
Scan this barcode using a QR Reader on your smart phone to learn more about Forest River.



A Berkshire Hathaway company.

All information contained in this brochure is believed to be accurate at the time of publication. However, during the model year, it may be necessary to make revisions and Forest River, Inc., reserves the right to make all such changes without notice, including prices, colors, materials, equipment and specifications as well as the addition of new models and the discontinuance of models shown in this brochure. Therefore, please consult with your Forest River dealer and confirm the existence of any materials, design or specifications that are material to your purchase decision. 11/20

©Copyright 2020 Forest River Inc - All Rights Reserved.