



SABRE

FIFTH WHEELS







SABRE
GET MORE!

**MORE CONTENT. MORE PRACTICAL.
MORE AFFORDABLE.**

Sabre fifth wheels are designed to make luxurious RV living affordable. We invite you to compare Sabre to America's most popular floor plans. Sabre provides more standard features while offering greater affordability. **CHOOSE SABRE. GET MORE.**

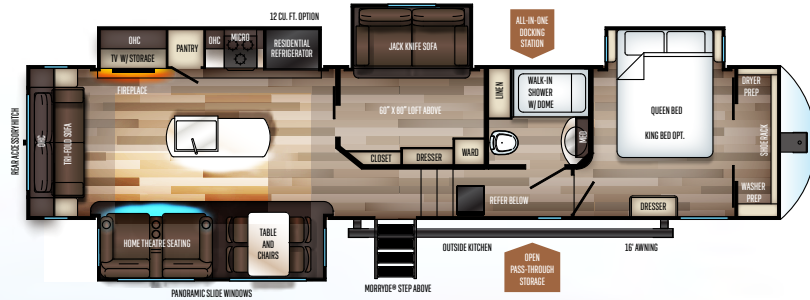


SABRE
36BHQ



SABRE

GET MORE!



SABRE

36BHQ

The Sabre 36BHQ is a beautiful floorplan with a second bedroom that can be used for sleeping, an office, rec space, sewing room, etc. There are a ton of possibilities with the extra space offered and there is even a sleeping/storage loft that utilizes the extra space above the extra room. In the main living area & kitchen you can find premium features such as solid surface countertops, theatre style seating w/ heat & massage, black out zebra shades, tri-fold rear sofa, and much more!

HITCH	UVW	C.C.C.	LENGTH **
2,095	11,493	2,472	42'
HEIGHT **	WIDTH	AWNING	CAPACITY (GAL.)
12' 7"	96"	16'	49 76 38
			FRESH GRAY BLACK



WEBSITE

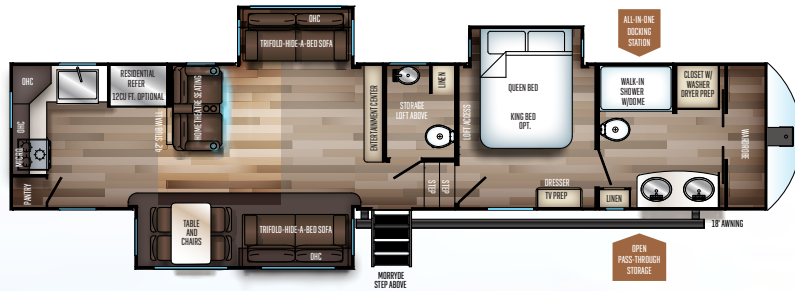
forestriverinc.com/sabre



SABRE
37FBT



SABRE
GET MORE!



SABRE
37FBS

The 37FBS is a pound for pound champion when it comes to versatility and value. This layout packs a huge bathroom with his & her sinks, a king bed slide, big storage loft, half bathroom, mid living setup w/ lots of seating, and a beautiful rear kitchen. You also get premium features like washer/dryer prep, auto leveling, a heated & enclosed underbelly, vacuum bonded sidewalls, a giant 14.7 cu. ft. fridge, and much more!

UVW	C.C.C.	LENGTH **
11,338	3,082	42' 8"
WIDTH	AWNING	CAPACITY (GAL.)
96"	21'	49 76 76
		FRESH GRAY BLACK



WEBSITE

forestriverinc.com/sabre

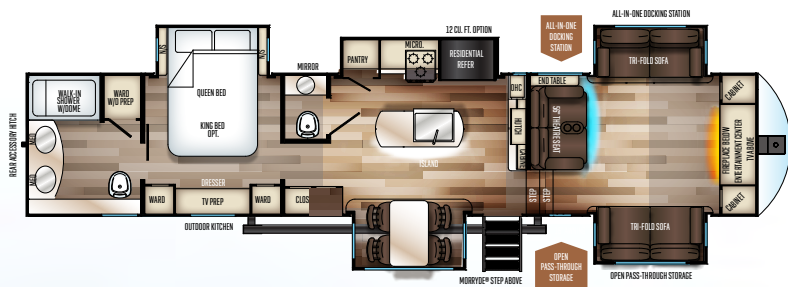


SABRE
37FLH



SABRE

GET MORE!



SABRE

37FLH

The front living room is great for entertaining with seating for everyone and a big TV for movie nights. Two of the sofas are full tri-fold sleeper sofas so you can easily sleep up to 4 adults and the third sofa is heat & massage theatre seating. The kitchen features solid surface countertops, a big island, 3 pantries, huge fridge, breakfast bar, 4-person table and chairs, and half bathroom. Finally, the master suite features a king bed slide, 2 wardrobes, his & her sinks, stackable washer/dryer prep.

HITCH	UVW	C.C.C.	LENGTH **
2,740	11,683	2,717	43'

HEIGHT **	WIDTH	AWNING	CAPACITY (GAL.)
13' 5"	96"	21'	49 76 76

FRESH GRAY BLACK



WEBSITE

forestriverinc.com/sabre

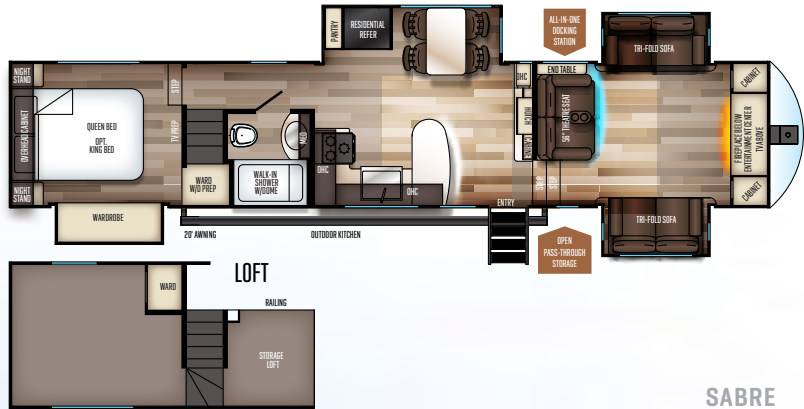




SABRE
37FLL



SABRE
GET MORE!



SABRE
37FLL

Best in class storage with industry first double loft! The 37FLL combines our popular front living design with the sleeping capability of a lofted destination trailer.

HITCH	UVW	C.C.C.	LENGTH **
2,570	11,880	2,972	42' 9"
HEIGHT **	WIDTH	AWNING	CAPACITY (GAL.)
13' 5"	96"	21'	49 76 38

FRESH GRAY BLACK



WEBSITE

forestriverinc.com/sabre





SABRE
38DBQ



SABRE

GET MORE!



SABRE

38DBQ

The 38DBQ is an amazing 2 bed/2 bath model that can easily accommodate your family. The rear room brings the “wow” factor with its big loft area, tri-fold sleeper sofa, flip down bunk, second full bathroom, and TONS of storage! The kitchen and living room is very spacious and includes 2 pantries, a beautiful island, big fridge, theatre seating, and a 4-person table and chairs. The master suite has a lot to offer as well with a full bathroom, big king bed, spacious wardrobe, and washer/dryer prep.

HITCH	UVW	C.C.C.	LENGTH **
2,030	12,493	2,037	42' 7"
HEIGHT **	WIDTH	AWNING	CAPACITY (GAL.)
13' 5"	96"	21'	49 114 76

FRESH GRAY BLACK

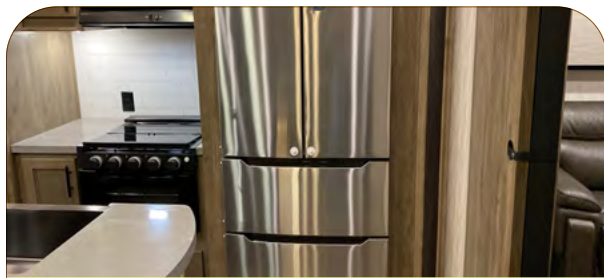


WEBSITE

forestriverinc.com/sabre

SWEET 16

Sabre fifth wheels are designed to make luxurious RV living affordable. We invite you to compare Sabre to America's most popular floor plans. Sabre provides more standard features while offering greater affordability. Choose Sabre. Get More.



COLOSSAL RESIDENTIAL FRENCH DOUBLE DOOR REFRIGERATOR WITH 1000W INVERTER



CENTRALIZED ONECONTROL SYSTEM FOR AUTO LEVELING, AWNING, SLIDEOUTS & LIGHTS WITH BLUETOOTH COMPATIBILITY



"GERM ASSASSIN" HAND SANITIZER STATION



"WHISPER COOL" MACH 15K BTU CIRCULAR RACE TRACK AC SYSTEM W/DUAL THERMOSTAT



VACUUM BONDED LAMINATION PROCESS WITH "TRU SHEEN" WHITE REFLECTIVE GLASS



"POLAR SHIELD" EQUIPPED

Ground Control 3.0

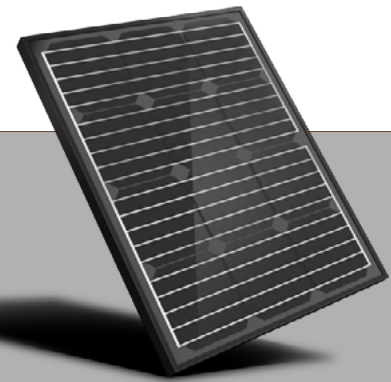
GEN III GROUND CONTROL ELECTRIC ONE TOUCH LEVEL UP SYSTEM W/BLUETOOTH FUNCTION



WIRELESS BACK-UP CAMERA AND MONITOR SYSTEM



CELLULAR WIFI PREP KIT



"JUICE PACK" SOLAR SUPPORT PACKAGE

Tufflex™

"TUFF TOP" TUFFLEX MAINTENANCE FREE HEAVY DUTY PVC ROOF MEMBRANE W/20 YEAR WARRANTY



SPRING BLOSSOM SOLID SURFACE COUNTERTOPS



EASY PULL DAY/NIGHT DECORATIVE ZEBRA SHADES TW/BLACKOUT CAPABILITY



RELAXING AMBIENT ACCENT LIGHTING THROUGHOUT LIVING AREA



"SECURE STEP" BACKLIT, LIGHTWEIGHT AND FULLY REMOVABLE ENTRY/EXIT QUAD STEP



"LOCK TITE" WOOD CORE CABINETRY CONSTRUCTION



PRE-DELIVERY INSPECTION FACILITY

20,000 square feet of quality assurance. The bare essentials for a premium product. This state-of-the-art facility gives immediate daily feedback to production for quality assurance in every unit built.



CUSTOMER SATISFACTION



www.ForestRiverBuyLocal.com

FREE MEMBERSHIP
to Forest River Owners' Group

www.forestriverfrog.com

SPECIFICATION DEFINITIONS

GVWR (Gross Vehicle Weight Rating) - is the maximum permissible weight of the unit when fully loaded. It includes all weights, inclusive of all fluids, cargo, optional equipment and accessories. For safety and product performance do NOT exceed the GVWR.

GAWR (Gross Axle Weight Rating) - is the maximum permissible weight, including cargo, fluids, optional equipment and accessories that can be safely supported by a combination of all axles.

UVW (Unloaded Vehicle Weight)* - is the typical weight of the unit as manufactured at the factory. It includes all weight at the unit's axle(s) and tongue or pin and LP Gas. The UVW does not include cargo, fresh potable water, additional optional equipment or dealer installed accessories.

*Estimated average based on standard build optional equipment.

CCC (Cargo Carrying Capacity)** - is the amount of weight available for fresh potable water, cargo, additional optional equipment and accessories. CCC is equal to GVWR minus UVW. Available CCC should accommodate fresh potable water (8.3 lbs per gallon). Before filling the fresh water tank, empty the black and gray tanks to provide for more cargo capacity.

** Estimated average based on standard build optional equipment

Each Forest River RV is weighed at the manufacturing facility prior to shipping. A label identifying the unloaded vehicle weight of the actual unit and the cargo carrying capacity is applied to every Forest River RV prior to leaving our facilities.

The load capacity of your unit is designated by weight, not by volume, so you cannot necessarily use all available space when loading your unit.



**24/7 EMERGENCY
ROADSIDE ASSISTANCE
WITH VEHICLE PURCHASE***

TOWING
JUMP-STARTS
TIRE CHANGES
FLUID DELIVERY
LOCKOUT
SERVICE

WINCH-OUT
MOBILE MECHANIC
TECHNICAL
SUPPORT
DEALER LOCATOR
SERVICES



*VALID FOR 1 YEAR FROM DATE OF PURCHASE



Learn More
Scan this barcode using a QR Reader on your smart phone to learn more about Forest River.



A Berkshire Hathaway company.

2577 E. KERCHER RD. GOSHEN, IN 46528 WWW.FORESTRIVERINC.COM/SABRE 574.642.3697

All information contained in this brochure is believed to be accurate at the time of publication. However, during the model year, it may be necessary to make revisions and Forest River, Inc., reserves the right to make all such changes without notice, including prices, colors, materials, equipment and specifications as well as the addition of new models and the discontinuance of models shown in this brochure. Therefore, please consult with your Forest River dealer and confirm the existence of any materials, design or specifications that are material to your purchase decision. Litho. U.S.A. FOR 1847 W: 2021.04.06

YOUR **SABRE** DEALER

