



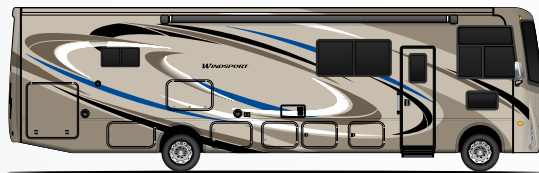
BAHAMA BREEZE **HD**



OCEANSIDE **HD**



DOCKSIDE PARTIAL PAINT **HD**



WATERFRONT PARTIAL PAINT **HD**



Thinking about buying a new coach? Have a question about one of our motorhomes? Trying to find a dealer near you?

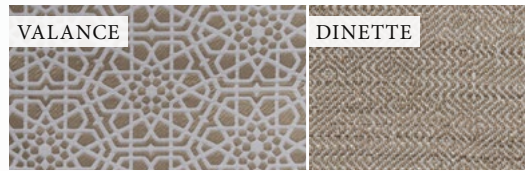
Our Coach Link® support team is here to help you in your purchase of a new motorhome! This dynamic team focuses directly on helping you find the answers you need to get you behind the wheel of one of our great new motorhomes. Call 800.860.5658 or visit us online at [thormotorcoach.com](http://thormotorcoach.com).



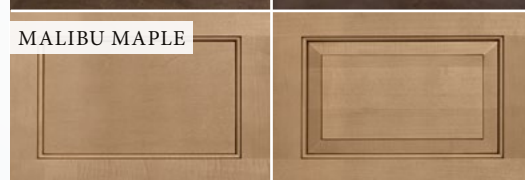
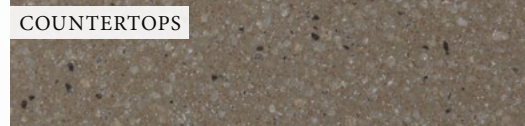
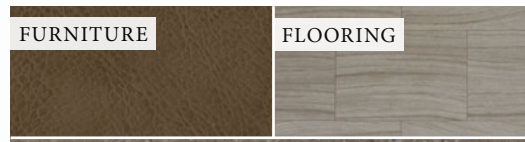
ETCHED NICKEL



MYSTIC MOON

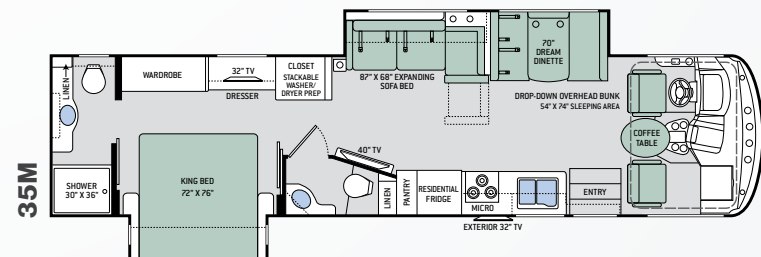
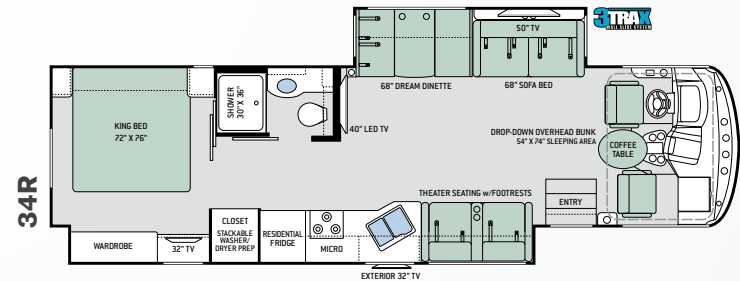
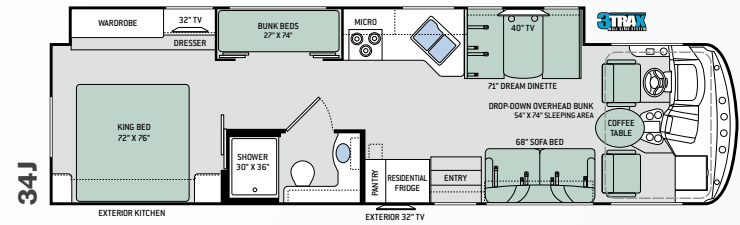
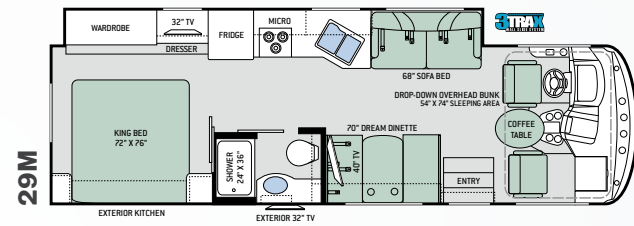
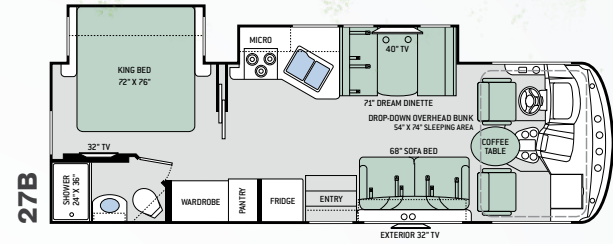


WINTER WHITE



FLAT PANEL

RAISED PANEL



# Featured Highlights

## CONSTRUCTION & EXTERIOR

- Ford® F-53 Chassis – 6.8L Triton® V10 Engine, 320HP, 460 lb.-ft. Torque – TorqShift® 6-Speed Automatic with Overdrive Transmission
- One-Piece Fiberglass Front & Rear Caps
- One-Piece Windshield
- HD-MAX® Exterior with Graphics Package
- Rotocast Storage Compartments
- Side-Hinged Flush Mount Radius Compartment Doors
- Premium One-Piece TPO Roof
- Automatic Leveling Jacks with Touchpad Controls
- Legless Lateral Power Patio Awning with Integrated LED Lighting
- Power Entry Door Awning (34R)
- 3TRAX® Wall Slide System (29M, 34J & 34R)
- Slideout Room Topper Awning(s)
- Pet-Link™ Multi-Purpose Tie-Down
- Electric Entry Step
- Roof Ladder
- Frameless Windows
- 8,000-lb. Trailer Hitch with 7-pin Round Connector

## CONSTRUCTION & EXTERIOR OPTIONS

- Partial Paint on HD-MAX® Exterior with Graphics Package
- Frameless Dual Pane Windows

## AUTOMOTIVE & COCKPIT

- 10" Touchscreen AM/FM Dash Radio with Bluetooth®
- Back-Up Monitor

- Heated/Remote Exterior Mirrors with Integrated Side View Cameras
- Reclining/Swivel Leatherette Captain's Chairs with Stow-Away Coffee Table
- Power Driver's Seat
- Emergency Engine Start Switch
- Generator Start Switch
- Tilt Steering Wheel
- Cruise Control
- Dash Fans
- Map Lights
- Fog Lights
- Conversation Mirrors in Front Overhead Cabinets
- Power Privacy Shade & Sunvisor at Windshield
- Privacy Curtain on Side Windows
- Dash Workstation with 110-volt & 12-volt Outlets
- 19.5" Tires with Stainless Steel Wheel Liners
- Valve Stem Extenders on Rear Wheels
- Power Drop-Down Hide-Away Overhead Bunk with Cotton Cloud™ Mattress & Bunk Ladder

## INTERIOR

- Rubber Tread Entry Steps with Lighted Step Well
- Residential Vinyl Flooring
- 84" Interior Ceiling Height
- LED Lighting
- Ceiling Ducted Air Conditioning System
- Raised Panel Upper Cabinet Doors with Nickel Finish Hardware & Glass Inserts on Select Doors
- Dream Dinette® Booth with Cup Holders

- Dinette Storage Drawer (N/A 29M)
- Leatherette Sofa Bed (N/A 35M)
- Leatherette Expanding Sofa Bed (35M)
- Leatherette Theater Seats with Integrated Footrests (34R)
- Window Privacy Shades

## INTERIOR OPTION

- Single Child Safety Tether in Dinette

## KITCHEN

- Double Door Refrigerator (27B & 29M)
- 11 cu. ft. Residential Refrigerator with Ice Maker (34J, 34R & 35M)
- 3-Burner Gas Cooktop/Oven with Bi-Fold Glass Cover
- 30" Over-the-Range Microwave Oven
- Decorative Glass & Tile Backsplash
- Solid Surface Countertops & Pressed Laminate Dinette Countertop
- Large Double Stainless Steel Bowl Sink with Single Handle Faucet & Pull-Down Sprayer
- Pantry (27B, 34J & 35M)
- 12-volt Attic Fan with Cover

## BEDROOM & BATHROOM

- Denver Mattress® King Size Bed
- Designer Headboard, Bedspread & Pillow Shams
- Bunk Beds in Hallway Slideout (34J)
- Foot Flush Porcelain Toilet
- Shower with Glass Door

## BEDROOM & BATHROOM OPTION

- 12-volt Attic Fan with Cover in Bedroom (27B & 29M – N/A on 29M when Dual 13,500 BTU Roof Air Conditioners is Optioned)

## ENTERTAINMENT

- 50" TV in Living Area (34R)
- 40" TV in Living Area
- Blu-Ray Player in Living Area
- 15.5" & 24" TVs & DVD Player in Bunk Bed Area (34J)
- 32" TV in Bedroom
- Exterior 32" TV on Manual Swivel with Bluetooth® Soundbar
- Speakers in Sofa Overhead
- HDMI Video Distribution
- Cable TV Ready
- Digital TV Antenna
- Power Charging Center for Electronics and Dedicated CPAP Machine Outlet
- Wifi Ranger® - Wifi Extender
- Exterior Kitchen with Refrigerator & Sink (29M & 34J)

## ELECTRICAL & PLUMBING

- Onan® RV QG 4000 Gas Generator (27B & 29M)
- 30-amp Detachable Shoreline Power Cord (27B & 29M)
- 15,000 BTU Front Roof Air Conditioner (27B & 29M)
- 50-amp Detachable Shoreline Power Cord, Dual 13,500 BTU Roof Air Conditioners, and Onan® RV QG 5500 Gas Generator (34J, 34R & 35M)
- Solar Charge Controller - Solar Panel Ready

- Exterior LP Connection
- Second Auxiliary House Battery
- Battery Tray that Holds up to Four Batteries (34J, 34R & 35M)
- 1000-watt Inverter (27B & 29M)
- 1800-watt Inverter (34J, 34R & 35M)
- Automatic Generator Start
- Battery Disconnect Switch
- Multiplex Wiring Control System with 7" Touchscreen
- 6-gallon DSI Gas/Electric Water Heater
- Water Heater Bypass System
- Enclosed & Heated Holding Tanks (N/A 29M)
- Enclosed Holding Tanks with Heat Pads (29M)
- 360° Siphon RV Holding Tank Vent Cap
- Black Tank Flush System
- 1" Fresh Water Tank Drain
- Stackable Washer/Dryer Prep (34R & 35M)
- Outside Shower
- Systems Control Center

## ELECTRICAL & PLUMBING OPTION

- 50-amp Detachable Shoreline Power Cord, Dual 13,500 BTU Roof Air Conditioners, and Onan® RV QG 5500 Gas Generator (STD 34J, 34R & 35M) / (12-volt Attic Fan in Bedroom N/A on 29M when Optioned)

For a complete listing of available features, visit [thormotorcoach.com/windSPORT](http://thormotorcoach.com/windSPORT).

	27B	29M	34J	34R	35M
Chassis	Ford	Ford	Ford	Ford	Ford
Gross Vehicle (GVWR)	18,000	18,000	22,000	22,000	22,000
Gross Combined (GCWR)	23,000	23,000	26,000	26,000	26,000
Wheel Base	190"	190"	242"	242"	242"
Exterior Length (w/o ladder)	29'-3"	30'-8"	35'-7"	36'	36'-9"
Exterior Height (w/ AC)	12'-2"	12'-2"	12'-2"	12'-2"	12'-2"
Exterior Width (w/o mirrors)	99"	99"	99"	99"	99"
Interior Height (living area)	84"	84"	84"	84"	84"
Awning Size	18'	18'	18'	18'	18'
Fuel (gal)	80	80	80	80	80
LPG (lbs)	88	88	88	88	88
Fresh Water (gal)	50	50	50	50	50
Waste Water (gal)	40	40	40	40	40F-39R
Gray Water (gal)	40	40	40	40	40F-39R
Water Heater (gal)	6	6	6	6	6
Furnace (BTUs)	30,000	35,000	35,000	35,000	35,000
Exterior Storage Capacity (cu. ft.)	73	64	116	109	112
Hitch Weight Rating (lbs)	8,000	8,000	8,000	8,000	8,000



IMPORTANT—PLEASE READ: This brochure reflects product design, fabrication, material, components and specifications at the date of printing, which date is disclosed below. Please visit us online at [ThorMotorCoach.com](http://ThorMotorCoach.com) or consult with your selling dealership for the latest in standards, options, specification and technical information. Photographs in the brochure may depict optional equipment or may only be available in certain floor plans. Components, appliances and the chassis may have been manufactured in a calendar year before the vehicle's designated model year. All capacities are approximate. The actual length of the vehicle may differ from that indicated in the brochure due to variances in the manufacturing processes and/or installed components. All dry weights are based on standard model features and do not include optional features or equipment. Component part and appliance manufacturers issue limited warranties covering portions of the vehicle not covered under the limited warranty we issue. Copyright Thor Motor Coach, Inc. © MY 04/13/2018

Made to fit.

P.O. Box 1486, Elkhart, IN 46515 Sales Department: 800.860.5658

[thormotorcoach.com/windSPORT](http://thormotorcoach.com/windSPORT)

