

# VACATIONER

2016 | CLASS A GAS

*Your  
adventure  
awaits.*

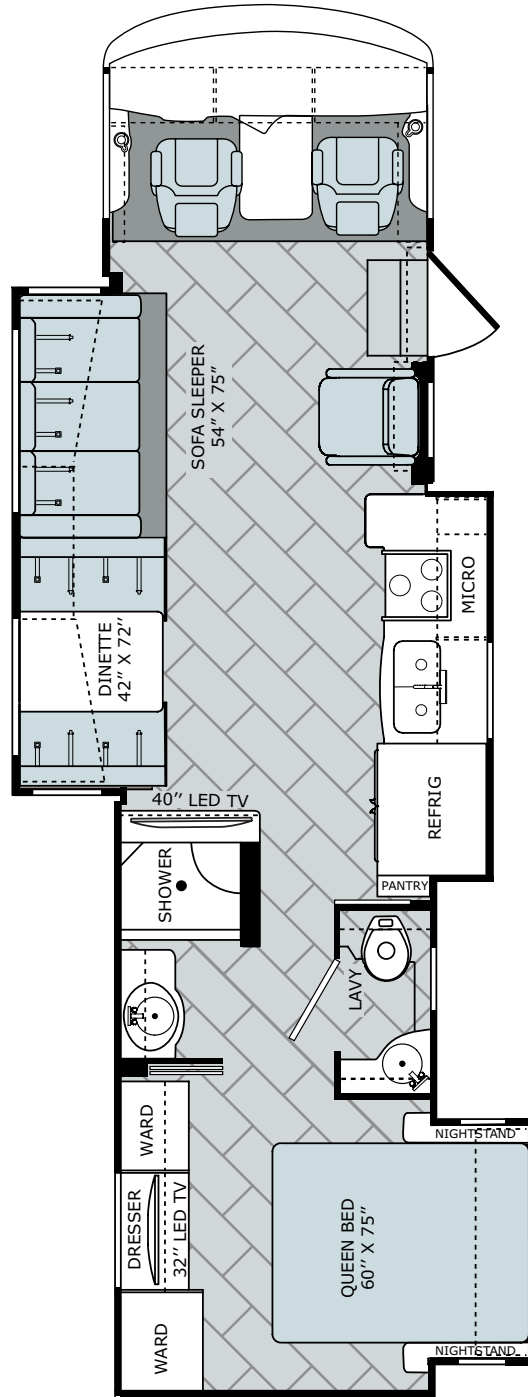
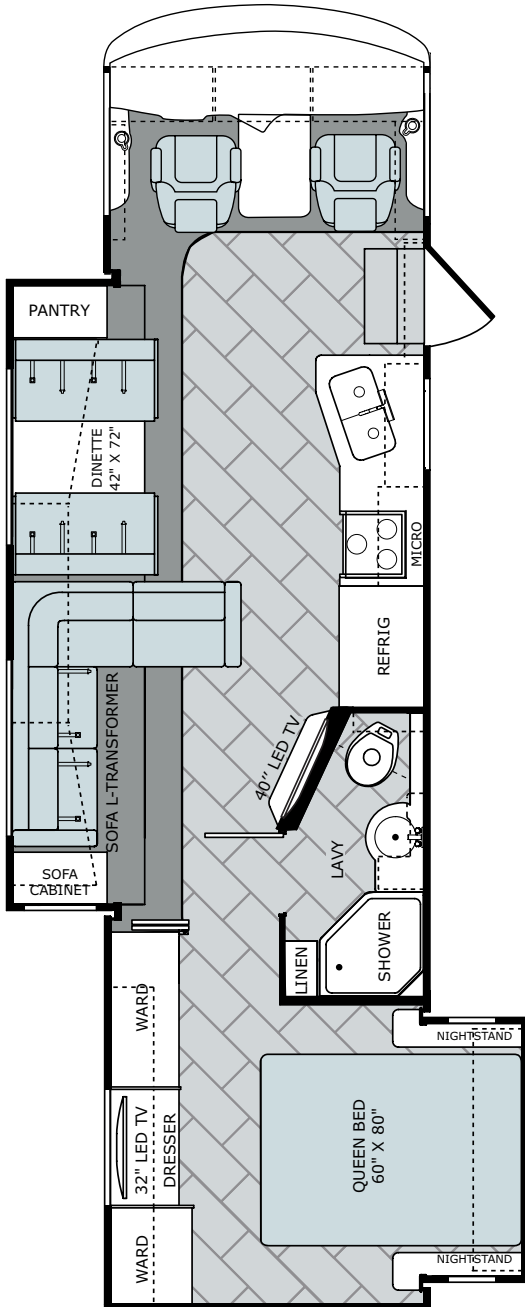


HOLIDAY RAMBLER

# VACATIONER

33CT

34ST



**AVAILABLE OPTIONS:** 087, 093, 113, 126, 139, 144, 186, 830, 833, 852, 853, 854

**AVAILABLE OPTIONS:** 087, 093, 113, 126, 139, 144, 830, 833, 853

## OPTIONS



OPT. 087  
FRONT  
32" LED TV



OPT. 093  
EXTERIOR  
ENTERTAINMENT  
CENTER



OPT. 113  
3-BURNER  
RANGE  
W/OVEN



OPT. 126  
WASHER/DRYER



OPT. 139  
ELECTRIC  
FIREPLACE



OPT. 144  
RESIDENTIAL REFRIG

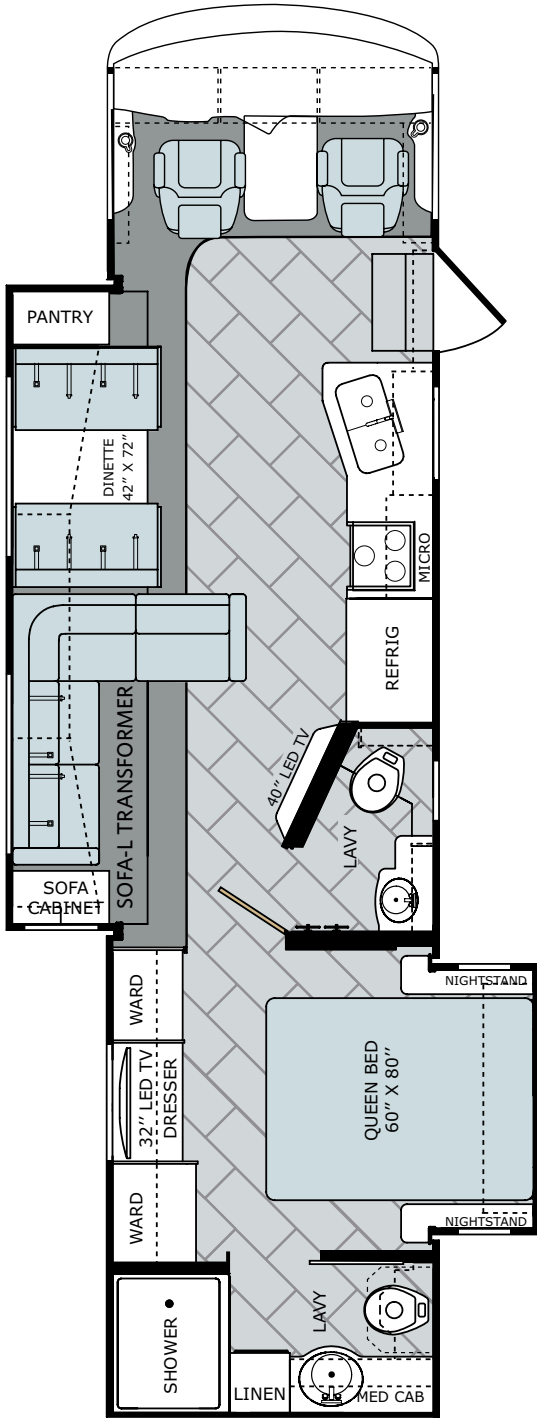


OPT. 157  
DUAL FLAT  
PANEL MONITORS

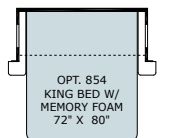
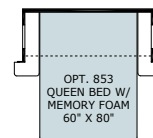
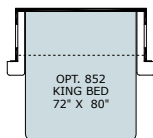
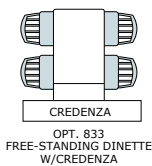
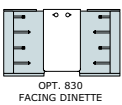


OPT. 186  
DRIVER/PASSENGER  
PEDESTAL TABLE

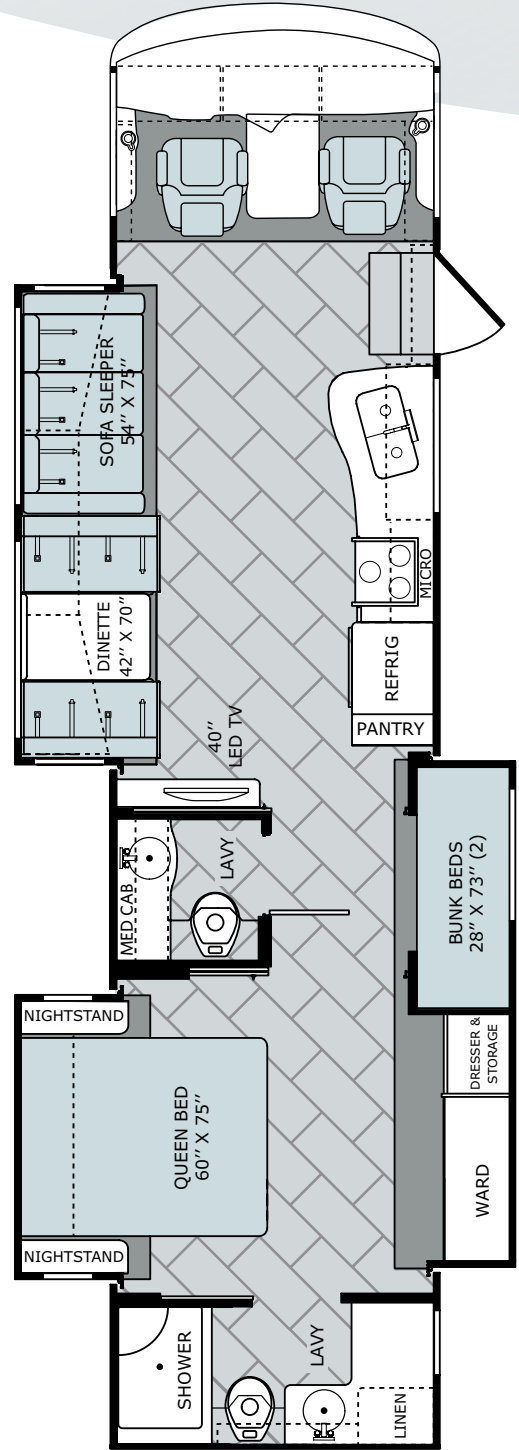
## 35DK



**AVAILABLE OPTIONS:** 087, 093, 113, 126, 139, 144, 186 830, 833, 852, 853, 854



## 37BH



**AVAILABLE OPTIONS:** 087, 093, 113, 126, 139, 144, 157, 186, 830, 833, 852, 853, 854



HOLIDAY RAMBLER

# VACATIONER 2016 | CLASS A GAS



CAPPUCCINO



GATEWAY GRAY



WATERFORD II

## KONA GROVE

## CABINETRY

SOFA

ACCENT

BEDSPREAD

COUNTERTOP

FLOORING

CARPET

GLAZED FULTON CHERRY



## LINEN RETREAT

GLAZED HILLSIDE CHERRY

SOFA

ACCENT

BEDSPREAD

COUNTERTOP

FLOORING

CARPET



### WEIGHTS & MEASUREMENTS

	33CT	34ST	35DK	37BH
Wheelbase (inches)	208"	228"	228"	242"
GVWR (lbs) <sup>1</sup>	22,000	22,000	22,000	22,000
Front GAWR (lbs) <sup>2</sup>	8,000	8,000	8,000	8,000
Rear GAWR (lbs) <sup>2</sup>	15,000	15,000	15,000	15,000
GCWR (lbs) <sup>3</sup>	26,000	26,000	26,000	26,000
Hitch Rating (lbs) <sup>††</sup>	5,000	5,000	5,000	5,000
Tongue Weight (lbs) <sup>†</sup>	500	500	500	500
Fuel Capacity (gal)	80	80	80	80

### DIMENSIONS & CAPACITIES

	33CT	34ST	35DK	37BH
Overall Length <sup>4</sup>	33' 8"	34' 10"	35' 8"	37' 0"
Overall Height (with A/C)	12' 10"	12' 10"	12' 10"	12' 10"
Overall Width (maximum) <sup>5, 6</sup>	102"	102"	102"	102"
Interior Height (maximum)	84"	84"	84"	84"
Interior Width (maximum)	96"	96"	96"	96"
Patio Awning Width	17'	17'	17'	17'
Interior Storage (cu. ft.)	123	123	126	134
Exterior Storage (cu. ft.)	160	165	180	190
Fresh Water Holding Tank (gal)	100	100	100	100
Grey Water Holding Tank (gal)	58	58	58	58
Black Water Holding Tank (gal)	42	42	42	42
Appliance Propane Tank (gal) (WC) <sup>7</sup>	25	25	25	25
Water Heater Tank (gal)	10	10	10	10

### FORD® CHASSIS

Model: Ford®	Alternator: 175 Amp
Engine: 6.8L Triton V10	Torque: 457 lb-ft @ 3,250 RPM
Transmission: 5-Speed, Automatic w/Overdrive	Horsepower: 362HP

#### Addendums

- GVWR (Gross Vehicle Weight Rating) is the maximum permissible weight of this fully loaded motorhome. The GVWR is equal to or greater than the sum of the (UUV) unloaded vehicle weight plus the (OCCC) occupant cargo-carrying capacity\*.
- GAWR (Gross Axle Weight Rating) is the maximum permissible loaded weight a specific axle is designed to carry.
- GCWR (Gross Combined Weight Rating) is the value specified by the motorhome manufacturer as the maximum allowable loaded weight of this motorhome with its towed vehicle. Towing and braking capacities may be different. Refer to Holiday Rambler and chassis manufacturer's manuals for complete information.
- Length measured from front bumper to rear bumper (excludes accessories).
- Excludes safety equipment and awnings.
- Motorhomes feature a body width over 96" which will restrict your access to certain roads. Before purchasing, you should research any state and/or province road laws which may affect your usage.
- Tank manufacturer's listed water capacity (WC). Actual propane capacity is 80% of water listing as required by the safety code.

† The chassis manufacturer recommends the installation of a supplemental brake control system to activate the brakes on the vehicle or trailer you are towing. Hitch receiver ratings expressed are maximum for the hitch receiver installed and may require the purchase of additional equipment that is dependent on the weight of the towed load. Consult with hitch receiver manufacturer for further information.

\* UUV and OCCC are found on the label containing the federal certification tag in each RV.

†† The Minimum Towable Load of this vehicle is the available weight capacity, up to GCWR, when the coach is fully loaded to maximum GVWR. However, if the coach is loaded to something less than maximum GVWR, that extra available weight capacity can be added to your Towable Load. For example, if your coach is loaded to 1000lbs less than maximum GVWR, your Towable Load increases accordingly. Do not exceed the hitch rating weight, GVWR or GCWR.

#### IMPORTANT—PLEASE READ

Product information, photography and illustrations included in this publication were as accurate as possible at the time of printing. For further product information and changes, please visit our website at [www.holidayrambler.com](http://www.holidayrambler.com) or contact your local Holiday Rambler dealer. Prices, materials, design and specifications are subject to change without notice. All weights, fuel, liquid capacities and dimensions are approximate. Holiday Rambler has designed its recreational vehicles to provide a variety of uses for customers. Each vehicle features optimal seating, sleeping, storage and fluid capacities. The user is responsible for selecting the proper combination of loads (i.e., occupants, equipment, fluids, cargo, etc.) to ensure that the vehicle's capacities are not exceeded.

#### CONTACT US

To locate a dealer near you, visit our website at [www.holidayrambler.com](http://www.holidayrambler.com) or call 1-877-252-4666. We can also be contacted at Holiday Rambler Customer Relations, P.O. Box 1007, Decatur, IN 46733.