

# TUSCANY

2007

THE COMFORT OF HOME ON THE ROAD.

TUSCANY  
DAMON  
MOTOR COACH



DAMON  
MOTOR COACH





**The luxurious décor** is defined by beautifully crafted kitchen and bath fixtures and solid wood cabinet doors with door pulls and knobs.

**The kitchen includes** a Fantastic® power vent with rain sensor. Move air in or out of your motorhome tremendously fast and never worry about the weather. The vent closes automatically if it begins to rain.

## **THE COMFORT OF HOME ON THE ROAD.**

Damon's Value By Design brings back a luxury motorhome that delivers undeniable comfort without the uncomfortable price you associate with high-end diesel pushers. So go ahead. Discover America! And discover the most affordable luxury motorhome on the market today.

The Tuscany diesel pusher continues to elevate the motorhome experience with quality features and comfortable surroundings. Enjoy the look of luxury with recessed halogen lighting and ceramic tile flooring. Sit back, relax and enjoy the comfort of your plush leather Euro recliners. Or settle into the oversized buddy and driver chairs in the cockpit (on some models) while watching your 32-inch LCD TV or listening to your hi-tech Dolby® Pro-Logic receiver amplifier. But the valuable features and amenities don't stop here.



Sunset Slate  
with Invisible Bra





4076 – Metro Coin/Cherry



**The roomy cockpit** features a 1.8 DIN radio for easier viewing. Plus, the new 7-inch backup monitor increases safety and visibility.

**Tuscany's Dream Dinette** easily converts from a beautiful dinette to a comfortable bed for additional sleeping space.

**Tuscany features** either a 32-inch LCD TV or 42-inch rear projection DLP TV in the living area for entertaining family and friends. Both include full-function remote, antenna booster and jack.



## **YOUR TICKET TO SPACIOUSNESS.**

Forward in the cabin, you'll enjoy the ultra-leather driver and passenger seats and a host of other valuable features.

A 7-inch backup monitor system with three cameras and audio makes backing up safer and easier. The system allows you to easily see down the sides of the Tuscany motorhome so you pass and park more safely and confidently.

Chrome power mirrors add a true bus look and are much easier to clean and maintain. A digi-shield on the front of your motorhome not only makes cleaning the front much easier, but it also helps prevent rock chips. And a simple push of a button allows the passenger to cover the step well.



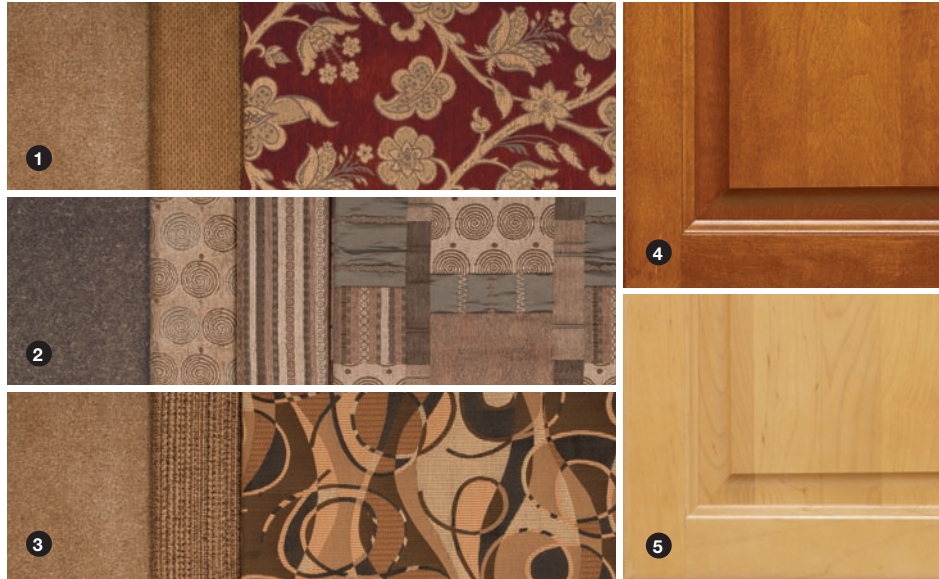
Ebony Shadow  
with Invisible Bra

# SURROUND YOURSELF WITH QUALITY AND STYLE.

## Décor

We have elevated the choice of environments to include new fabrics and solid woods to make you feel even more at home. The coordinated interiors will lend a sense of your personality to your Tuscany.

- 1 Cajun Spice
- 2 Driftwood Mocha
- 3 Metro Coin
- 4 Cherry
- 5 Honey Maple



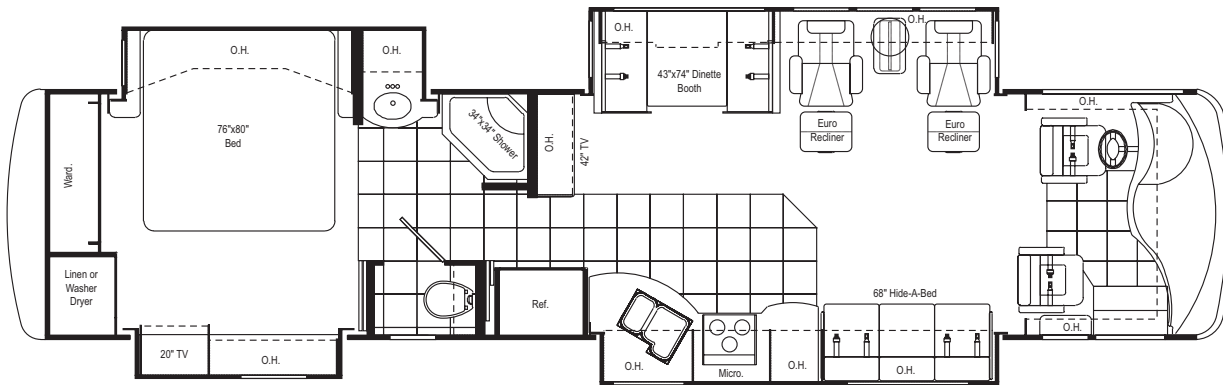
- A** The oversized ultra-leather passenger chair offers 6-way power with adjustable arms and a comfortable electric footrest.
- B** Three backup cameras, one on the back and one on each side, help you see down the sides and back of your Tuscany better for safer passing and backing up.
- C** The raised rail chassis gives you tons of extra basement storage space.
- D** The backup monitor system in the cockpit allows you to see your backing up and passing progress. It also comes with audio.
- E** The Fantastic® vent helps circulate interior air, plus it automatically keeps out the elements.
- F** Keeping your Tuscany clean is easy with this central vacuum system.

**Paint:** Tuscany's exterior paint packages offer a bold and contemporary design with a distinctively upscale look. **Construction:** With a virtually maintenance-free roof, water-resistant floor, strong and rigid sidewalls and a raised rail chassis with more than enough muscle to ride in comfort, you can always count on quality construction from Damon.



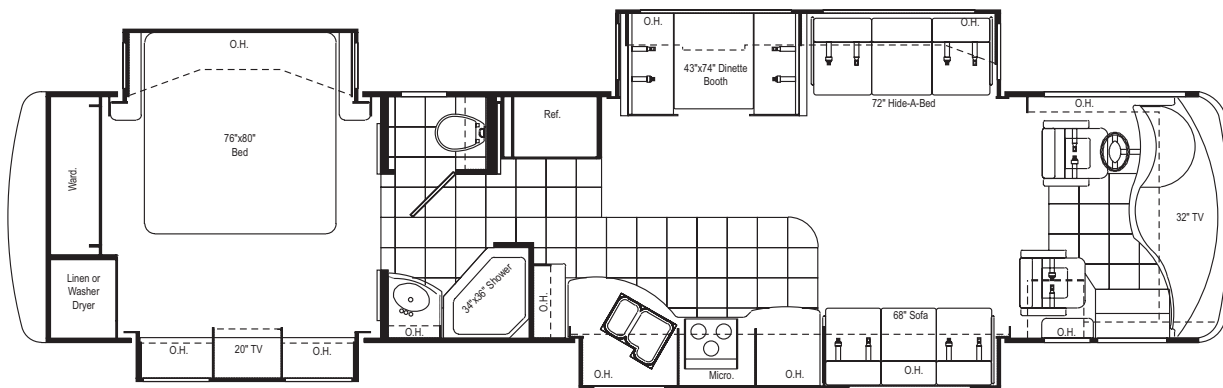
Iced Autumn  
with Invisible Bra

## FLOOR PLANS



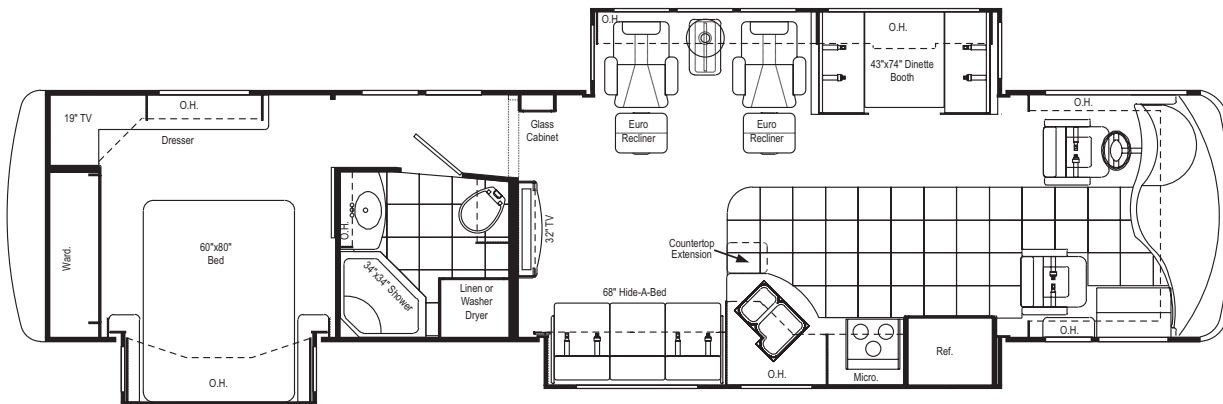
### 4072

Quadruple slideout.  
Dream Dinette. King-size bed. 42" television located mid-coach.



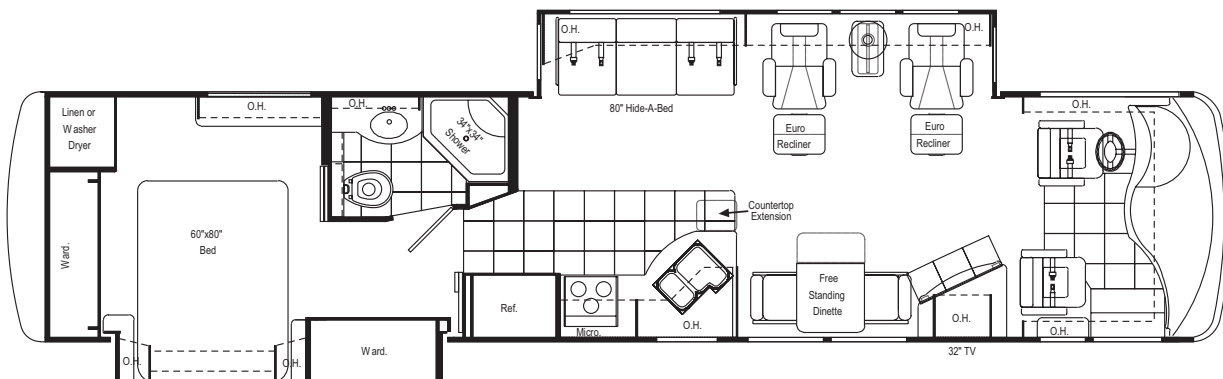
### 4074

Quadruple slideout.  
Large living space.  
Dream Dinette.  
King size bed.



### 4076

Triple slideout. Front Kitchen. Dream Dinette.  
Euro recliner.



### 4077

Double slideout. Extra wardrobe space. Free standing dinette. Floor-mounted TV cabinet.

## TUSCANY STANDARD SPECIFICATIONS AND FEATURES

### Exterior

Full-body paint package with color-coordinated slideroom awnings  
 Color coordinated awning package including electric patio awning with remote control and manual entry door awning  
 Fog lights  
 Wide-body design  
 Radius-corner domed TPO roof  
 Rear ladder  
 Aerodynamic front and rear fiberglass caps  
 Side-mounted awning over slideout  
 Upgraded gel-coated fiberglass sidewalls  
 Locking aluminum storage compartments  
 Three side-hinged compartment doors (passengers side)  
 Custom-designed front door with screen  
 Black-framed, dual-pane, radius-cornered windows  
 Two patio lights (one on each side)  
 Lighted storage compartments  
 Full basement, pass-through storage  
 Gas pistons on exterior storage doors  
 Invisible Bra

### Chassis

Raised-rail chassis  
 350-hp Caterpillar® engine  
 In-block engine heater  
 Leece Neville® 160-amp, 12-volt alternator  
 Allison® MH-3000 automatic transmission – 6 speed  
 Exhaust brake  
 Full air brakes with automatic slack adjusters (front and rear)  
 Antilock brakes  
 Midland® Pure-Air Plus™ heated air dryer  
 Air-ride suspension system  
 Sachs® shock absorbers (front and rear)  
 22.5" radial tires  
 Automatic leveling jacks  
 Full-width stainless-steel stone guard with Damon stencil  
 Trailer hitch (10,000 lbs.)  
 Emergency start circuit  
 Under-hood light  
 Layer of neoprene vibration dampener  
 Dual fuel fills  
 Aluminum wheels (set of four)

### Cockpit

Molded ABS dash with dash fans  
 Electronically controlled dash air conditioning  
 Premium AM/FM/CD/cassette player (single disc, in-dash)  
 Premium 4-speaker sound with powered subwoofer  
 Electronic cruise control  
 Padded steering wheel

Tilt/telescoping steering column  
 Map lights  
 Air horns  
 Tinted windshield with privacy shade  
 Chrome power mirrors with heat  
 Ceramic tile entry  
 Ultra-leather reclining driver's seat with 6-way power  
 Ultra-leather oversized passenger seat with 6-way power and electric foot rest  
 3-point wall-mounted seat belts  
 Storage cabinets above driver and passenger  
 Electric sun visors with two manual side shades  
 Backup monitor system with two side cameras and audio  
 Electric step cover

### Living Area

Sofa bed (ultra-leather) (passengers side) (4074 only)  
 Two Euro recliners with coffee table and lamp (driver's side) (N/A on 4074)  
 Hide-a-bed (décor fabric) (driver's side) (4074 & 4077 only)  
 Hide-a-bed (décor fabric) (passengers side) (4072 & 4076 only)  
 Day/night shades  
 100% nylon carpeting with stain treatment and padding  
 32" LCD TV in cockpit overhead with full-function remote, antenna booster and jack (4074 only)  
 32" LCD TV with full-function remote, antenna booster and jack (4076 & 4077 only)  
 42" rear projection DLP TV with full function remote, antenna booster and jack (4072 only)  
 Home theater package (VCR, DVD/CD player and 5-channel Dolby® Pro-Logic receiver amplifier)  
 Soft-touch padded vinyl ceiling  
 Halogen lighting  
 Aisle lights and pin-up lights

### Kitchen

Refrigerator: four-door with icemaker  
 Refrigerator: raised-panel solid wood front (honey maple or cherry)  
 Cooktop  
 1.1 cubic-foot space-saver microwave/convection oven  
 Two solid-surface sink covers  
 Single-lever faucet with sprayer  
 Kitchen faucet water filter  
 Solid-surface countertops and range cover  
 Solid wood cabinet doors throughout (honey maple or cherry)  
 Ceramic tile flooring

Dream Dinette with wood-edged table (N/A on 4077)  
 Freestanding dinette with four chairs (two fixed and two folding) (4077 only)  
 Mini blinds  
 Fantastic® power vent with rain sensor  
 Wallpaper border

### Bedroom

Pillowtop mattress  
 Bedspread with throw pillows  
 19" or 20" color TV  
 Lambrequin window treatments  
 Day/night shades  
 Pin-up lights  
 AM/FM/CD player

### Bathroom

Full-height fiberglass tub or shower with door and skylight  
 Obscure glass window in private stool area (4072 & 4074 only)  
 Power vent  
 Foot-flush porcelain toilet with sprayer  
 Wallpaper border  
 Ceramic tile flooring

### Utilities

Air conditioner: 13,500-BTU ducted central (front)  
 Air conditioner: 13,500-BTU ducted central (rear)  
 Furnace: 35,000-BTU electronic ignition floor-ducted  
 Water heater: 10-gallon gas/electric with electric ignition and blending valve  
 Water heater bypass kit  
 Generator: 7.5 kW Onan® quiet diesel  
 Inverter: 2000-watt  
 6-volt auxiliary batteries (four)

Battery disconnect  
 50-amp, 120-volt service with marine-type detachable power cord  
 Exterior GFCI receptacle  
 Enclosed heated potable and holding tanks  
 Black water tank flush  
 Three-way valve for tank/city water fill  
 Washer/dryer prep  
 Cable TV/satellite hookup  
 Pre-wired for roof-mounted satellite dish  
 Exterior shower  
 Carbon monoxide, LP gas and smoke detectors  
 Monitor panel with LPG readout  
 Central vacuum system with toekick dustpan (no toekick on 4076)

### Popular Options

Color-coordinated window awnings  
 Dual heat pumps with low-profile A/C (N/A with optional A/C)  
 Multi-disk CD changer  
 Hide-a-bed (ultra-leather) (driver's side) (4074 & 4077 only)  
 3-burner range and oven IPO cooktop  
 Hide-a-bed (ultra-leather) (passengers side) (4072 & 4076 only)  
 Energy management system  
 2 folding chairs (available with freestanding dinette) (4077 only)  
 Buffet with additional storage and four chairs (two fixed and two folding) (N/A on 4077)  
 Electric fireplace (4077 only)  
 Easy-slide storage tray  
 Exterior entertainment center with 19" TV  
 DSS automatic-tracking satellite dish

Weights and Measures	4072	4074	4076	4077
Chassis	Freightliner	Freightliner	Freightliner	Freightliner
Wheelbase	266	266	266	266
Overall length	40'8"	40'8"	40'8"	40'8"
Overall width	101"	101"	101"	101"
Overall height with AC	12'7"	12'7"	12'7"	12' 7"
Std. weight (approx. lbs.)	27027	26521	26386	25857
GVWR	31K	31K	31K	31K
GCWR	41K	41K	41K	41K
Fresh water (approx. gal.)	100	100	100	100
Grey/black water (approx. gal.)	51/51	51/51	51/51	51/51
LP (lbs.)	126	126	126	126
Sleeping capacity	4	4	4	4
Exterior storage capacity (cu. ft.)	215	215	215	215
Interior drawers	12	15	19	12
Interior drawer capacity (cu. ft.)	13.2	15.6	10.1	8.7
Fuel capacity (approx. gal.)	100	100	100	100



Freightliner Custom Chassis  
 THE LEADER AT EVERY TURN



**DAMON**  
 MOTOR COACH

P.O. Box 2888 • Elkhart, IN 46515  
 Customer Service: 800-860-3812  
 Sales Department: 800-860-5658

[www.DamonRV.com](http://www.DamonRV.com)



**THOR**  
 AMERICA'S BEST RV VALUE

DC 8/06 © 2006 Damon Motor Coach Printed in U.S.A.

Due to constant product improvements, the specifications, component parts and standard/optional equipment are subject to change without notice or obligation. Product photography or diagrams may show equipment that is optional. Damon Motor Coach reserves the right to make changes in prices and models and to discontinue models without notice or obligation. Components, parts or chassis may have been manufactured at times other than the model year indicated. All capacities are approximate and dimensions are nominal. All dry weights are based on standard model features and do not include optional features or equipment. Various RV components and features may differ to conform to local codes. Due to EPA environmental restrictions, engine power and torque ratings may change mid-year.