

**WILDWOOD**

PROMOTING FUN AND VALUE FROM OUR FAMILY TO YOURS.



**WILDWOOD**

PROMOTING FUN AND VALUE FROM OUR FAMILY TO YOURS.







WILDWOOD

T26TBSS

Family Friendly Towable Unit



# PERSONAL. PRIVATE. PERFECT.



INTERIOR COLOR  
**YORK**



Wildwood clearly has larger bedrooms than the competition, which gives plenty of walk-around space around the bed with ample room for grandpa to put on his overalls without bumping into cabinets.

Most Wildwood master bedrooms include a laundry storage feature.



Extra large pot and pan drawer at the dinette base. This, together with the extra deep overhead cabinets in the kitchen, provide the consumer the best storage by far in the industry, and this separates us from the competition.

Giant-sized drawer under the standard sofa provides 4.8 cubic feet of storage!



*Shown with Optional TV*

The attractive Wildwood entertainment center includes a flip around TV mount for display in the living room and master bedroom. This central display enhances TV viewing in both rooms. Included are 2 entrances to the master bedroom with solid sliding doors for privacy.



27"

Extra Deep  
Overhead  
Cabinets

WILDWOOD

T27RKSS

Great Living Room, Amazing Kitchen,  
Great Windows



# WE NEVER CUT CORNERS.

Wildwood doesn't skimp on windows, drawers, solid interior doors, cabinets or other features. We are committed to manufacturing quality built products.



Full extension ball bearing drawer guides with cabinet-grade plywood drawer slides



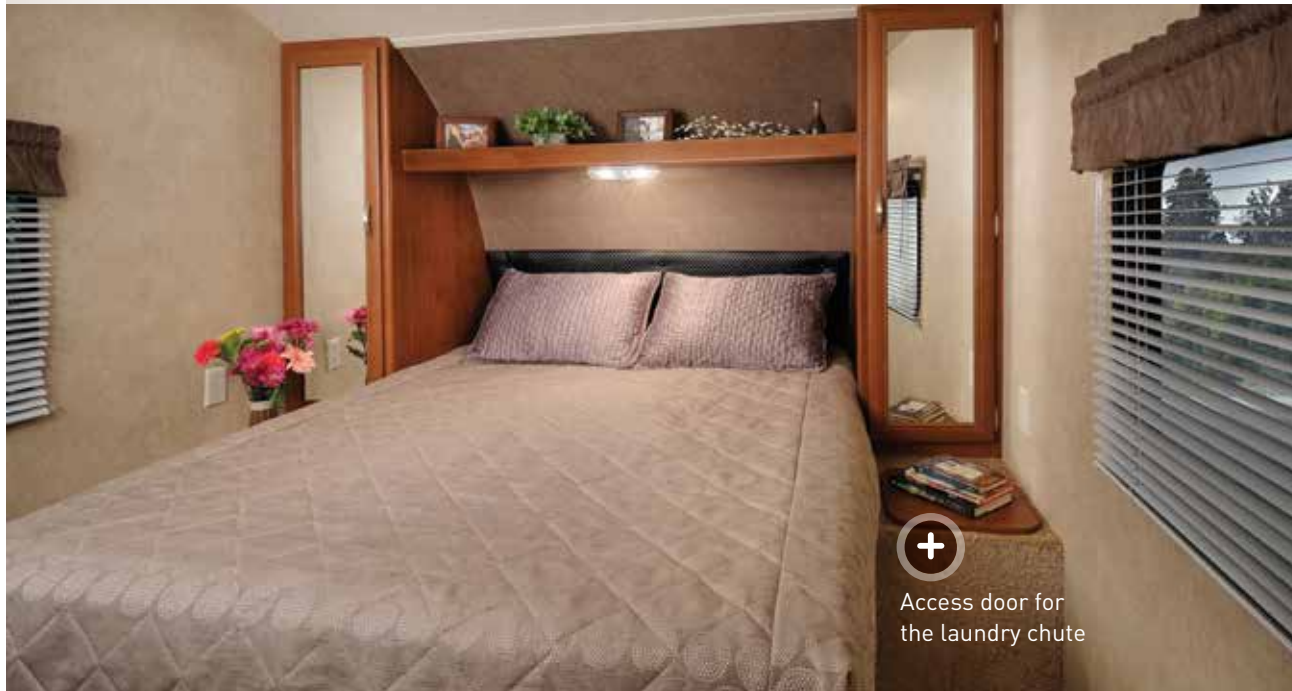
Solid hardwood dinette table top with a booth or u-shaped dinette (per floorplan)



"Double Deep" kitchen overhead cabinets provide a kitchen with the best storage space in the business. (27RKSS model)



INTERIOR COLOR  
**TIFFANY  
LEATHER**



Access door for the laundry chute



4  
5

Recent redesigns have brought more inches into the bedroom at the foot of the bed.

All non bunk house model Wildwoods come equipped with this attractive shower enclosure.





WILDWOOD

# T28DBUD

An Elegant Bunk Model



1/2 barrel Lazy Susan. Wildwood products are designed with a focus on storage.

*Shown with Optional TV*



# DISCOVER THE BEST BUY.

The 28DBUD and all the Wildwood models offer more for the dollar spent. With phenomenal market share growth over the last 5 years the Wildwood has become the value buyers choice. The beautiful interiors are one reason. Wildwoods look like an RV costing \$5,000 or \$10,000 dollars more. The slide-out treatments, cabinet storage, window appointments, wood grain linoleum, bedspreads, shower curtains, and the finishes on appliances, cabinets and hardware, are major elements to our success. See for yourself. Compare and make the wise and obvious choice to own a Wildwood RV by Forest River, Inc.



An extra large 20" x 30" compartment door is standard on most Wildwood products (Per floorplan)



6  
7

INTERIOR COLOR  
**HARBOR**



Right:  
Wildwood master bedroom includes solid doors (not drapes), which are excellent for privacy, and give access to the entertainment center TV.

Above: Shown are the 2 rear double beds in a 28DBUD model Wildwood

*Shown with Customer-Supplied TV*





WILDWOOD  
**T30KQBSS**  
The Ultimate Big Family Camper



# Camp easy.

Large families can really appreciate the value of camping in the 30KQBSS with the huge u-shaped dinette, lots of beds and tons of storage. This model is loaded with practical, value-added features which makes enjoying your camping trip easy.

## TOWABLE COMFORT FOR YOUR FAMILY

Wildwood provides spacious, convenient floorplans, even when you need light-weight towability for any size family!

## THE OUTSIDE KITCHEN

The ever-popular outside kitchen provides fireside access to refreshments and a second cooking area outdoors.

## FLEXIBLE BUNK ROOM

The 30KQBSS has a practical bunk room with flexibility to sleep 3 people. (Dinette makes into a bed.)

## EXCELLENT CRAFTSMANSHIP

Our skilled craftsmen have years of experience building beautifully finished RVs. Forest River, started building RVs in 1996 and today is the **number one producer of travel trailers in the world.\*** Wildwood has been part of that since the beginning.

\* Independent data provided for January through August 2014 by Statistical Survey's, Inc. Grand Rapids, Michigan.



INTERIOR COLOR  
TIFFANY  
LEATHER



*Shown with Armstrong Plank Wood Linoleum.*

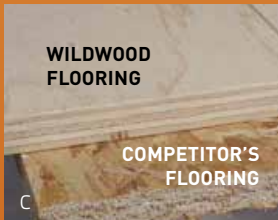




# WILDWOOD CONSTRUCTION



- 1 Radius entry Steps
- 2 2" x 3" floor joists 12" on center
- 3 5/8" 5-ply tongue in groove plywood floor decking
- 4 2" wall studs 16" or less on center
- 5 30" fiberglass radius entry door
- 6 .024 aluminum siding
- 7 5" bowed truss roof rafters
- 8 One piece seamless roof (12 yr. warranty)
- 9 R-7 fiberglass insulation throughout
- 10 Extra large full pass-thru storage w/ 20" x 30" Door (per floorplan)
- 11 Smooth rolled skirting
- 12 In floor ducted heat
- 13 Diamond plate rockguard
- 14 3/8" roof decking (full walk-on roof)
- 15 LP bottle cover w/ easy access
- 16 13.5K ducted roof, high output AC w/ quick cool
- 17 Hitch light
- 18 Stain resistant carpet
- 19 One piece plank wood linoleum flooring
- 20 Safety glass windows



## FORM FOLLOWS FUNCTION.

At Wildwood your satisfaction is serious business and it shows. Our commitment to your satisfaction includes:

- A: Extra large pass-thru storage
- B: Heated and enclosed fresh water tank
- C: Wildwood 5/8" Tongue and groove plywood (top) vs. OSB (below)
- D: 6 gallon GE DSI water heater with Quick Recovery
- E: New Centralized Command Center



# WILDWOOD STANDARDS & OPTIONS

## CONSTRUCTION & EXTERIOR

### 5/8" tongue & groove plywood floor

Full walk on one-piece seamless **SuperFlex®** roof w/ 12 year warranty

Extra large full pass through storage (per floorplan)

Cold crack and mildew resistant vinyl patio awning

Safety glass windows

Steel framed 30" smooth radius fiberglass main entry door

Powder coated I-beam frame

Cambered chassis

### Enclosed fresh water tank in a heated compartment

16-gal. per hour **Gas/Electric** quick recovery DSI water heater

Water heater by-pass

Nitrogen filled tires

2" wall construction, 16" (or less) on center

R-7 fiberglass insulation throughout

13 ply cross micro-laminated beam header above slide outs

### Triple seal slide outs

Electric slide out systems (flush floor)

Swing arm entry assist handle

Two marine grade exterior speakers

Electric front jacks (fifth wheels)

### Fiberglass front cap (fifth wheels)

### New aerodynamic front radius

## KITCHEN

Dometic® double door refrigerator (2 yr. warranty)

High rise faucet

Deep basin 60/40 residential style sink

Microwave w/ carousel

3-Burner, high output range with oven (2 yr. warranty)

Range hood w/ 12-volt exhaust fan and light

One piece plank wood linoleum flooring

### 27" tall overhead cabinet (kit)

Wood drawers w/ furniture-grade plywood slides

Full extension ball bearing drawer guides

### Hardwood dinette table top

Knife rack (behind cook top)

**Shelving** in overhead cabinets in kitchen

Central switch location for command center

Brushed stainless finish hardware

Abundant cabinet storage

### Large pots and pans drawer under dinette

## LIVING ROOM

80" interior height in travel trailers

(101" interior height in fifth wheel models)

Ducted 13,500 BTU roof air conditioner w/ quick cool

### Huge storage drawer under jiffy sofa

Booth dinette w/ large storage drawer (most models) (U-shaped dinette, some models)

Large dinette picture window

Digital TV antenna with booster

Standard FM stereo w/ CD/DVD and four cube speakers

Patio door w/ vertical blinds (36BHBS, 37BHSS2Q, 38RLTS)

Decorative wall light

25K BTU suburban forced air DSI furnace w/ digital thermostat (2 yr. warranty)

In-floor ducted heat

Flip TV mount (most models)

Cable TV hookup

### Wall switch controls for ceiling lights at key locations

## BEDROOM

Evergreen mattress

Plush comforter and headboard

Strut lifted storage area under bed (master bedroom)

Bedside mirrored wardrobes w/ shelf above bed

Bedside 110-volt power outlets (2)

### Increased space at the foot of the bed (most models)

Solid bedroom privacy doors (most models)

Storage shelf above bed

Bedside hamper access (most models)

## BATHROOM

12-volt power bath roof exhaust vent

Wooden medicine cabinet w/ mirrored door

Foot flush toilet

Tooth brush holder and towel ring

Vinyl tub surround (neo-angle showers have an enclosure) (select floorplans)

One-piece linoleum floor

## SECURITY AND SAFETY

LED docking lights (fifth wheels)

LP leak detector

Smoke detector

Carbon monoxide detector

Fire extinguisher

Hitch light (travel trailers)

Amber patio light

Welded heavy duty safety chains (travel trailers)

Electric brakes (all wheels)

GFI receptacles

ANSI 119.2 certified

Meets all national highway administration specifications

RVIA approved product

## WILDWOOD OPTIONS

Stabilizer jacks [travel trailer (4) or fifth wheel (2)]

Skylight over tub

30-lb LP bottles w/ cover and auto change over (travel trailers)

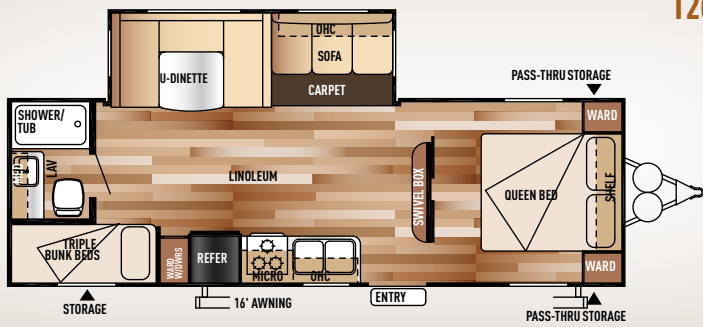
12v power four corner jacks

Power awning

15,000 BTU ducted air w/ quick cool

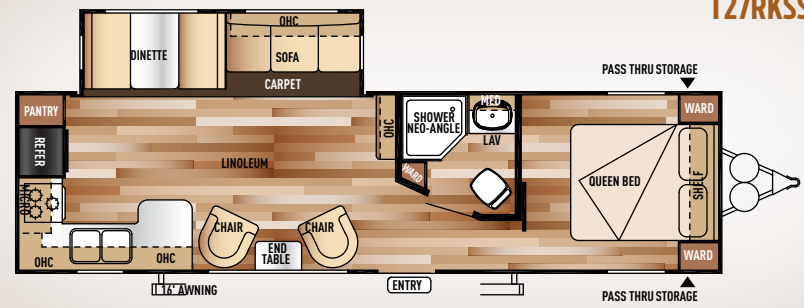
Contact your Wildwood dealer for a complete list of options.





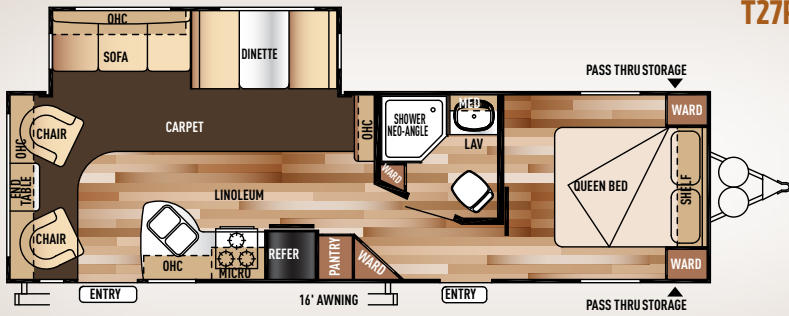
**T26TBSS**

**5,790**  
DRY WEIGHT



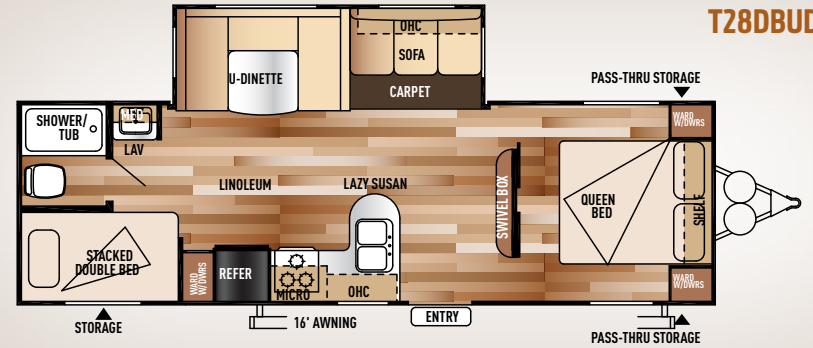
**T27RKSS**

**6,355**  
DRY WEIGHT



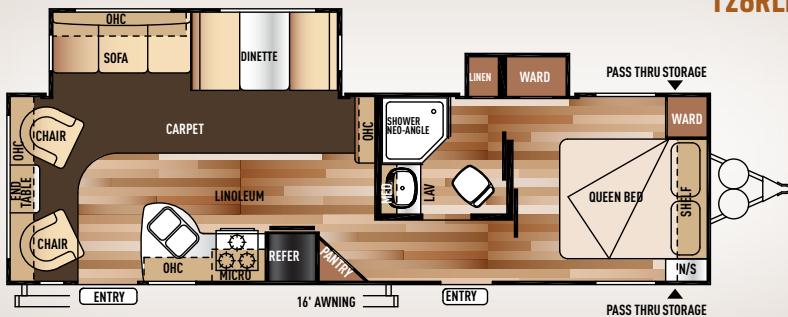
**T27RLSS**

**6,372**  
DRY WEIGHT



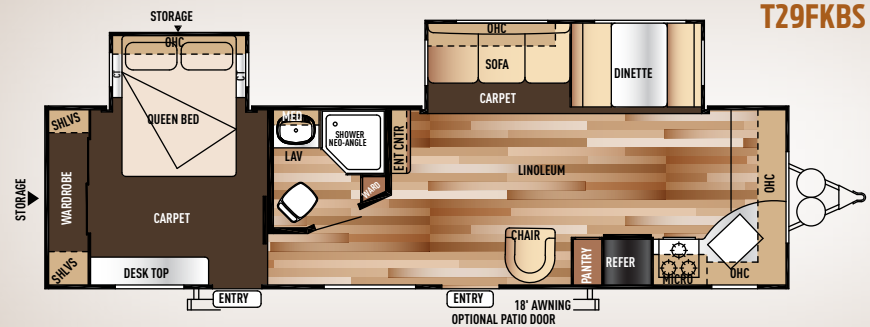
**T28DBUD**

**5,842**  
DRY WEIGHT



**T28RLDS**

**6,782**  
DRY WEIGHT



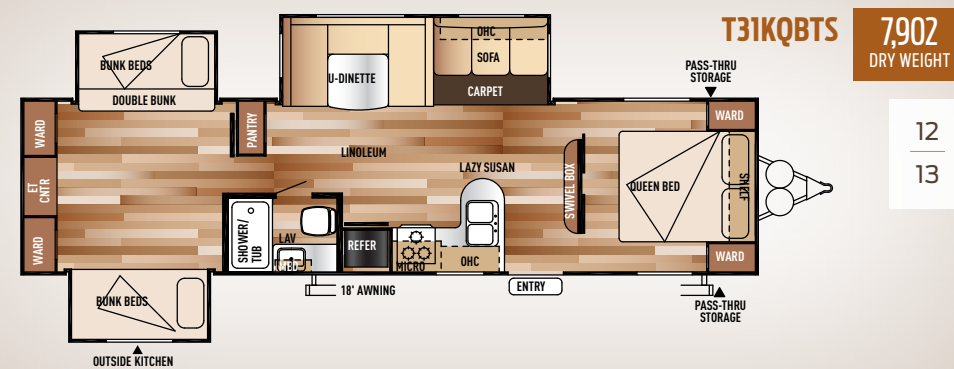
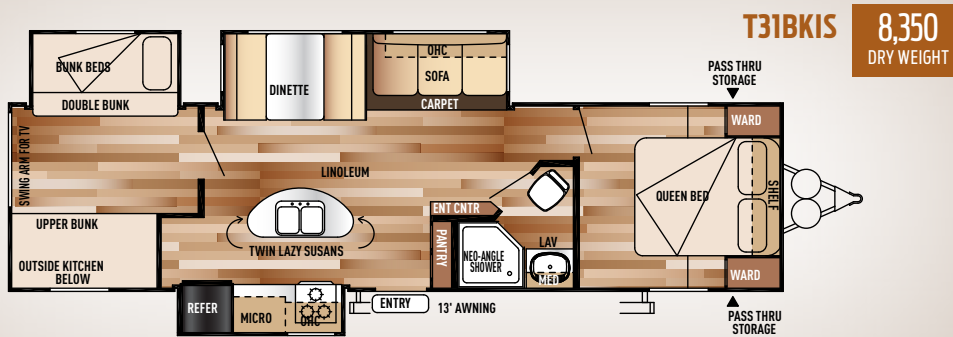
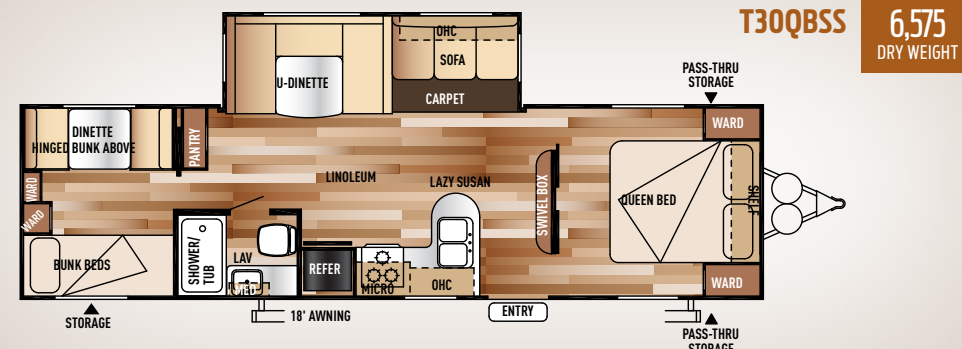
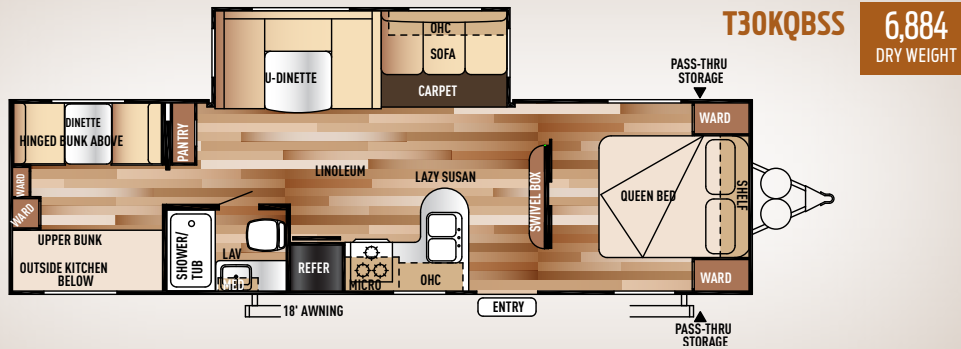
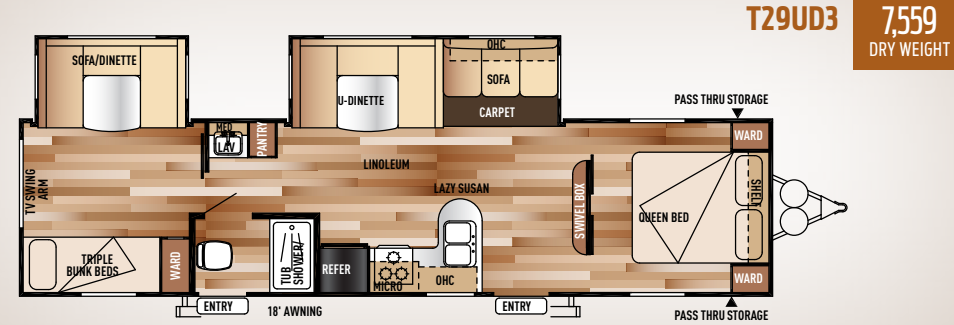
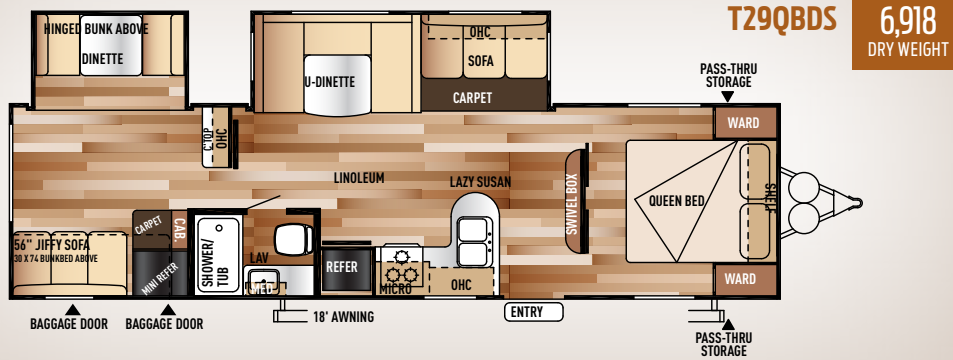
**T29FKBS**

**7,513**  
DRY WEIGHT

# WILDWOOD TRAVEL TRAILERS

	T26TBSS	T27RLSS	T27RKSS	T28DBUD	T28RLDS	T29FKBS
HITCH WEIGHT (LBS.)	815	650	720	805	882	826
DRY SHIP WEIGHT (LBS.)	5790	6372	6355	5842	6782	7513
CARGO CARRYING CAPACITY (LBS.)	1987	1240	1327	1920	1062	3414
EXTERIOR LENGTH	29' 0"	32' 2"	33' 3"	29' 10"	32' 3"	35' 3"
EXTERIOR HEIGHT	11' 2"	11' 2"	11' 2"	11' 2"	11' 2"	11' 2"
FRESH WATER CAPACITY (GAL.)	40	40	40	40	40	40
BLACK WATER CAPACITY (GAL.)	32	35	32	32	27	27
GREY WATER CAPACITY (GAL.)	34	69	69	35	69	69
AWNING SIZE (FT.)	16'	16'	16'	16'	16'	18'





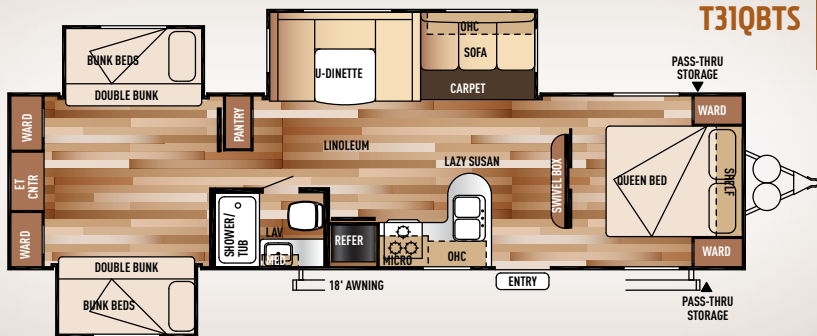
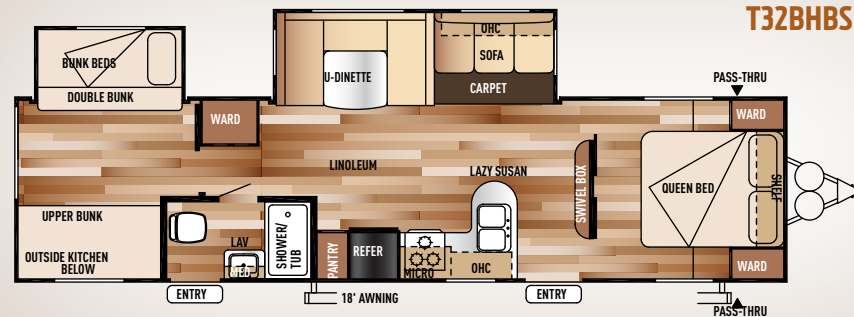
	T29QBDS	T29UD3	T30QBSS	T30QBS	T31BKIS	T31KBTS
HITCH WEIGHT (LBS.)	899	956	899	980	970	793
DRY SHIP WEIGHT (LBS.)	6918	7559	6884	6575	8350	7902
CARGO CARRYING CAPACITY (LBS.)	2722	3519	2756	3146	2742	3013
EXTERIOR LENGTH	34'0"	36'5"	33'0"	33'2"	35'8"	36'1"
EXTERIOR HEIGHT	11'2"	11'2"	11'2"	11'2"	11'2"	11'2"
FRESH WATER CAPACITY (GAL.)	40	40	40	40	40	40
BLACK WATER CAPACITY (GAL.)	27	32	27	27	32	34
GREY WATER CAPACITY (GAL.)	30	32	30	30	64	68
AWNING SIZE (FT.)	18'	18'	18'	18'	13'	18'

### FLOORPLAN KEY

- OHC** OVERHEAD CABINET
- WARD** WARDROBE
- MICRO** MICROWAVE
- LAV** BATHROOM SINK

Pillows and blankets shown on beds and bunks are for demonstration purposes only and do not come with your new coach.

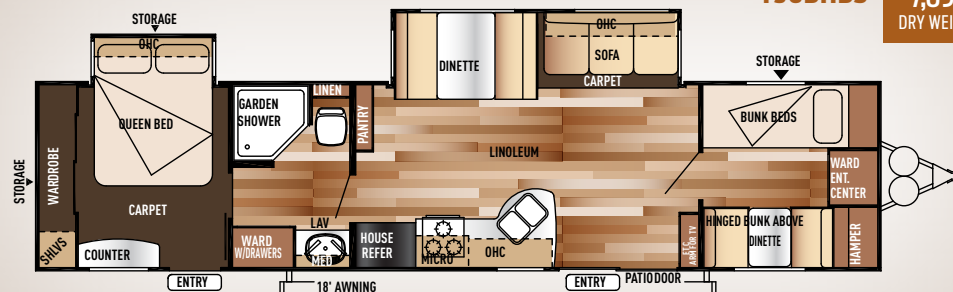
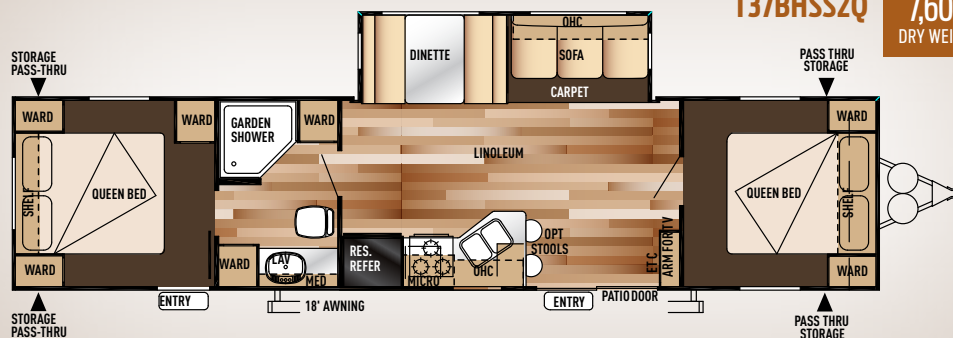
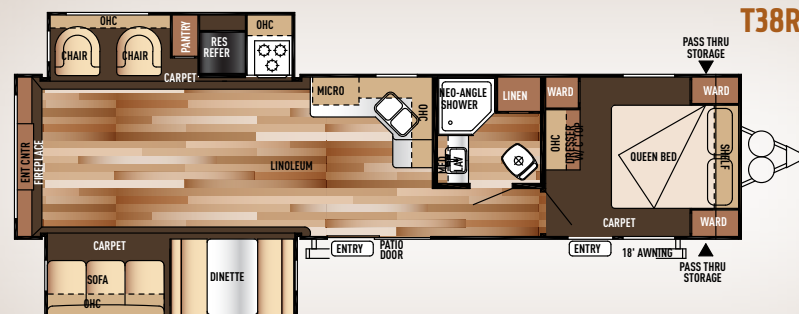


**T31QBTS****8,140**  
DRY WEIGHT**T32BHBS****7,995**  
DRY WEIGHT

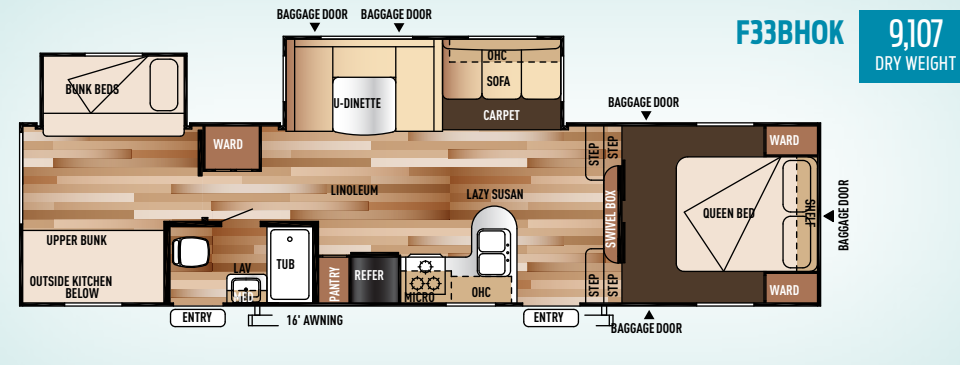
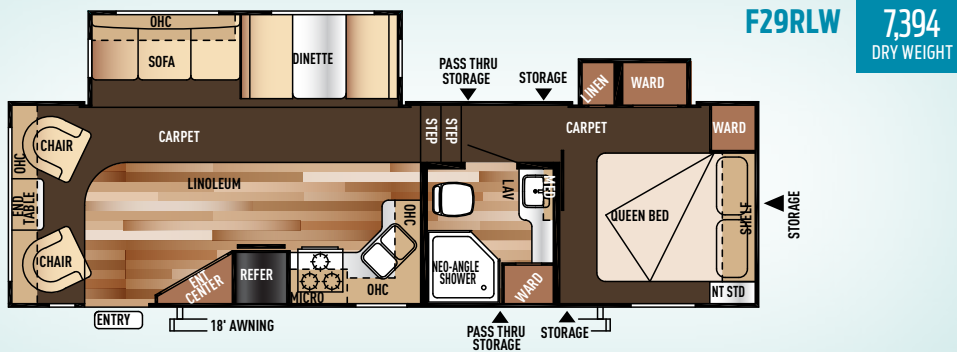
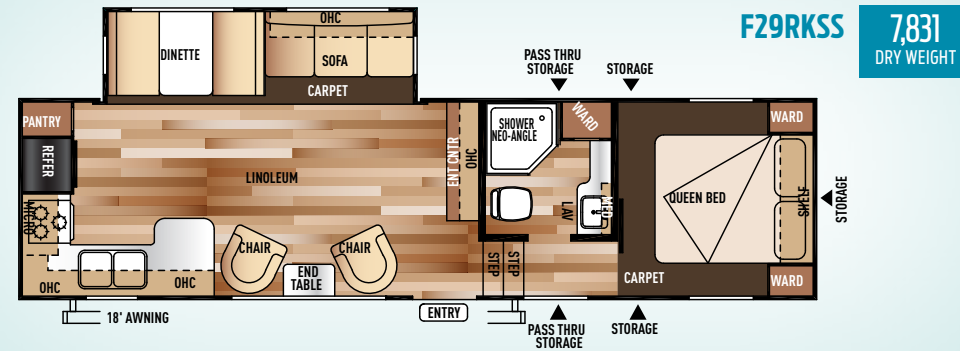
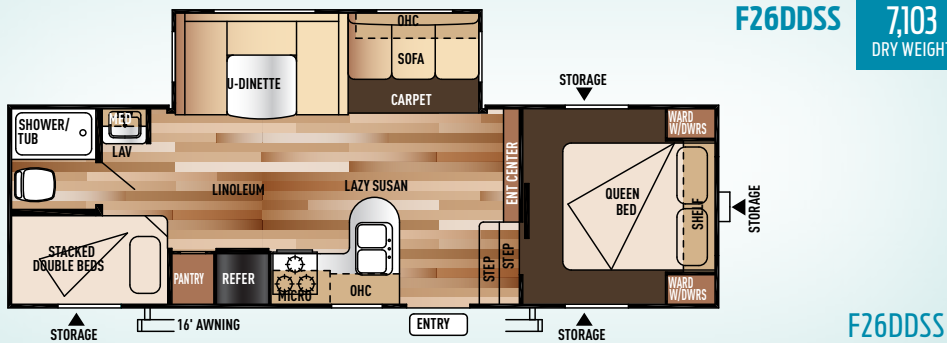
# AMERICA'S CHOICE

Wildwood brand trailers are becoming America's choice for another reason beyond interior appointments. The quality in construction of this unit makes it the wise choice in "Family Affordability." We start with a foundation of 5/8" tongue and groove exterior-grade plywood flooring. This is glued and "ring shank" nailed to 2"x 3" floor joists. This glue is so strong many refer to it as a "wood weld." Here is a list of outstanding construction exterior features.

1. Overpowered drive motor for the slideout mechanism
2. One-piece seamless SuperFlex® roof
3. Smooth fiberglass entrance and compartment doors
4. Heated enclosed fresh water tanks. (This makes 3 1/2 season camping possible in your Wildwood Camper.)
5. Triple seal on slideout openings, with maximum duty perimeter strength.
6. Select axles with fully machined spindles, manufactured to exacting tolerances. The best spindle in the business helps your unit to pull arrow straight.
7. Our (CCC) cargo carrying capacities are as good or better than any brand in the business.
8. Towability is maximized, with the right combination of balance, axle placement, weight and aerodynamics.

**T36BHBS****7,892**  
DRY WEIGHT**T37BHSS2Q****7,600**  
DRY WEIGHT**T38RLT****8,588**  
DRY WEIGHT





# WILDWOOD TRAVEL TRAILERS AND FIFTH WHEELS

	T31QBTS	T32BHDS	T36HBBS	T37BHSS20	T38RLT	F26DDSS	F29RKSS	F29RLW	F33BHOK
HITCH WEIGHT (LBS.)	885	859	720	970	1030	1272	1418	1441	1704
DRY SHIP WEIGHT (LBS.)	8140	7955	7892	7600	8588	7103	7831	7394	9107
CARGO CARRYING CAPACITY (LBS.)	2846	3026	2929	3492	2543	2931	3709	4169	2719
EXTERIOR LENGTH	35'6"	35'8"	36'7"	36'1"	38'5"	30'9"	34'1"	31'8"	37'9"
EXTERIOR HEIGHT	11'2"	11'2"	11'2"	11'2"	11'2"	12'3"	12'3"	12'3"	12'9"
FRESH WATER CAPACITY (GAL.)	40	40	40	40	40	40	40	40	40
BLACK WATER CAPACITY (GAL.)	34	32	27	27	40	34	27	32	32
GREY WATER CAPACITY (GAL.)	35	66	30	30	40	32	62	32	66
AWNING SIZE (FT.)	18'	18'	18'	18'	13'	16'	18'	18'	16'

## FLOORPLAN KEY

- OHC** OVERHEAD CABINET
- WARD** WARDROBE
- MICRO** MICROWAVE
- LAV** BATHROOM SINK

Pillows and blankets shown on beds and bunks are for demonstration purposes only and do not come with your new coach.

14  
15



# THE WILDWOOD LINE-UP



WILDWOOD X-LITE



WILDWOOD



WILDWOOD DLX | WILDWOOD LODGE



WILDWOOD HERITAGE GLEN

YOUR WILDWOOD DEALER



**Learn More**  
Scan this barcode using a QR Reader on your smart phone to learn more about Forest River.



A Berkshire Hathaway company.

Forest River, Inc. 55470 C.R. 1 Elkhart, IN 46515 | (574) 533-5934  
www.forestriverinc.com/wildwood | www.forestriveraccessories.com

**FREE MEMBERSHIP**  
to Forest River Owners' Group



www.forestriverfrog.com

All illustrations and specifications contained in this literature are based on the latest product information at time of publication. Forest River reserves the right to make changes in prices, colors, materials, equipment and specifications at anytime without notice and assumes no responsibility for any error in this literature. All units are shipped F.O.B. Goshen, Indiana. CONSULT YOUR LOCAL DEALER FOR WARRANTY INFORMATION. LITHO: U.S.A. FOR 1083 P & W: 2013.12.10



## PRE-DELIVERY INSPECTION FACILITY

20,000 square feet of quality assurance. The bare essentials for a premium product. This state-of-the-art facility gives immediate daily feedback to production for quality assurance in every unit built.



Forest River, Inc. encourages our customers to purchase their Forest River products from a local dealership whenever possible for the following reasons:

- 1) Forest River, Inc. dealers are independently owned and operated businesses so priority service and scheduling is at their discretion and is often provided to customers that purchased their unit at that dealership.
- 2) Purchasing locally allows customers to establish meaningful relationships with a dealer, enhancing the RV experience through assistance with product questions, user tips or RV regulations for your state or country, and much more!
- 3) Canadian customers must meet requirements to bring an RV purchased out of the country to their home. These requirements may involve additional inspections and certifications, taxes and fees. Your local Canadian Dealer is a professional at meeting these requirements.
- 4) Scheduling timely warranty repairs and adjustments through a local dealership provides far greater flexibility and convenience to you, the customer!

It is the goal of Forest River, Inc. that all of our RV owners fully enjoy the RV experience and that customer satisfaction meets or exceeds their expectations!

## 24/7 EMERGENCY ROADSIDE ASSISTANCE

For a worry-free ownership experience

**Coach-Net®**

RV Technical & Roadside Assistance

Forest River includes one year of Coach-Net RV Technical & Roadside Assistance with each RV purchase. Whether new to the RV lifestyle or an experienced RV enthusiast, Forest River owners have 24/7 access to technical, operational and emergency road service coverage throughout the US & Canada. Coach-Net's fast, dependable service is just a phone call away.