



**OUTLOOK**

**WINNEBAGO**



*On the Cover: 25J Denim Standard Graphics*

*Interior: 25J Mystic with Glazed Kona Cabinetry*

Full-featured,  
family-friendly, and  
ready to roll

Meet the Outlook<sup>®</sup>, the new Class C motorhome that's fully equipped and priced to fit almost any budget. Built on Ford's proven E350 and E450 chassis and Winnago's legendary SuperStructure<sup>®</sup> construction design, the Outlook's five well-appointed floorplans include up to two slideouts and range in length from 24'2" to 31'10". The best-in-class energy

efficient exterior fiberglass skin keeps the coach cool on sunny days and maintains superior durability. Each floorplan features a full galley, overhead bed, and a long list of standard amenities at a friendly price point. When your long day of adventures comes to a close, you can count on a good night of rest in the walkaround queen bed (22C, 27D, 31N).



**25J Overhead Bed**



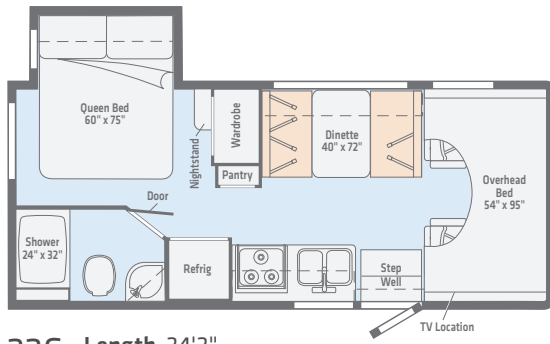
**25J Sofa as Bed**



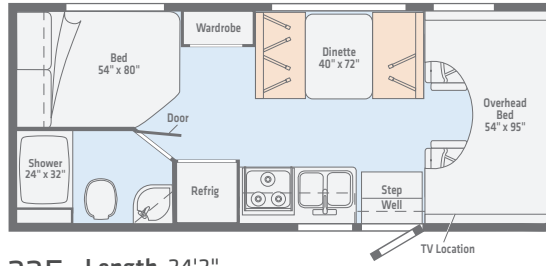
**25J Galley**



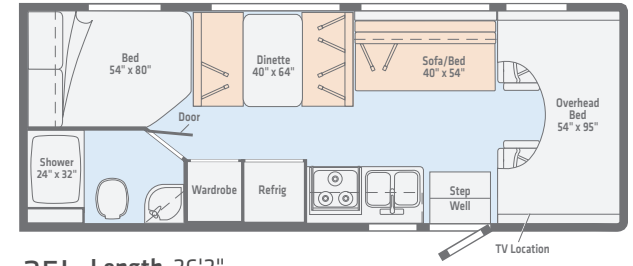
**25J Dinette as Bed**



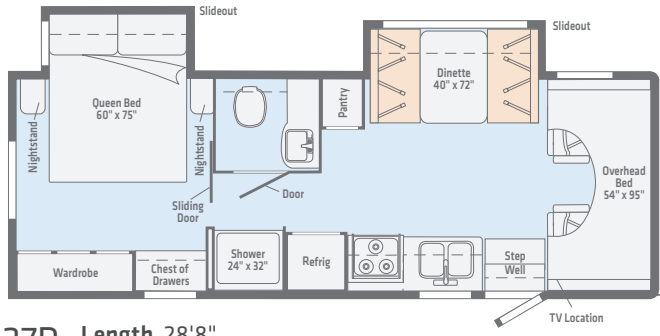
**22C** Length 24'2"  
Seating 5



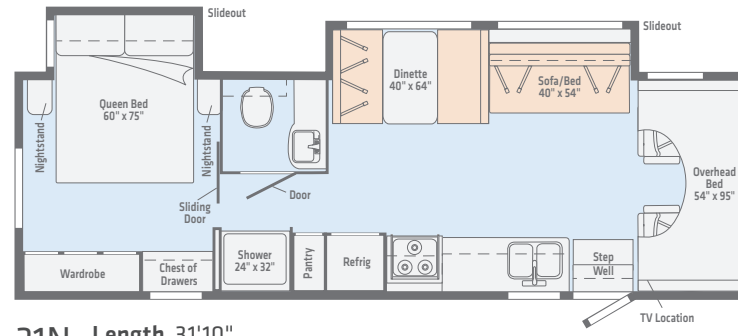
**22E** Length 24'2"  
Seating 5



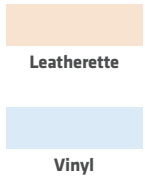
**25J** Length 26'2"  
Seating 6



**27D** Length 28'8"  
Seating 6



**31N** Length 31'10"  
Seating 6



## Weights | Measures

Exterior Height	10'9"/10'10"	GCWR (lbs.)	18,500/22,000
Exterior Width	8'5"	GVWR (lbs.)	11,500/14,500
Interior Height	6'10"	GAWR - Front (lbs.)	4,600/5,000
Interior Width	8'	GAWR - Rear (lbs.)	7,800/9,600

Dashed lines denote overhead storage areas. Floorplans and specifications are also available online at [WinnebagoInd.com](http://WinnebagoInd.com).



**WinnebagoInd.com**  
Has All The Answers

Visit us online for all the latest product information.



**Ruby**  
STANDARD GRAPHICS



**Deep Sky**  
STANDARD GRAPHICS

**Mystic**



Leatherette      Leatherette Accent      Bedspread      Countertop      Vinyl Flooring



Glazed Kona

*Winnebago® reserves the right to change décor materials and specifications without notice or obligation.*

**WinnebagoInd.com  
Has All The Answers**

Visit **WinnebagoInd.com** on your computer, smartphone, or tablet for the latest product information and updates.



**Go to WinnebagoInd.com for the latest information.** Winnebago's continuing program of product improvement makes specifications, equipment, model availability, and prices subject to change without notice. Published content reflects the most current product information at time of printing. Please consult your dealer for individual vehicle features and specifications.

**Thermo-Panel® Sidewalls** By layering fiberglass and high-density block foam insulation with welded aluminum support structures, the Outlook has some of the industry's strongest, most durable, and lightweight sidewalls.



**Solid Framework** The steel structure creates an extremely strong and solid frame for added durability and safety.

**Ford® Chassis** The legendary Ford chassis with the 305 horsepower, 6.8 Liter-V10 engine delivers a durable and powerful ride.

**FEATURED WINNEBAGO TRAVELERS**

The Holcombes - **Peter, Kathy, and Abby** - have been full-time RVing since 2014. Using photos and videos shot by Peter, a professional photographer, the family has documented their many adventures around the continent including hiking, paddling, climbing, canyoneering, fishing, and more. All from the comfort of their Winnebago.

You can follow their journey at [WinnebagoLife.com](http://WinnebagoLife.com). You'll also find hundreds of other great stories from GoLife's outstanding contributors, along with how-to articles, gear reviews, RVing tips, and much more.



To learn more about the Holcombes' adventures, visit:

**GoLife**

[WinnebagoLife.com/about](http://WinnebagoLife.com/about)

**WINNEBAGO**<sup>®</sup>

[WinnebagoInd.com](http://WinnebagoInd.com)

©2018 Winnebago  
Printed in USA  
11/2018