

Sunstar

WINNEBAGOTM



Why Sunstar?

- Seven family-friendly floorplans
- LED ceiling lights (NA 26HE, 31KE)
- Private master bath and guest half bath (35B, 35F)
- MCD blackout roller shades
- Ultraleather™ swivel cab seats (Primera 26HE, 31KE)
- Corian® galley countertops (Laminate 26HE, 31KE)
- Master walk-around queen bed or available king bed (36Y)
- Available StudioLoft™



On the Cover: 35F Dark Spiral Gray Full-Body Paint

35F Inglewood with Coffee-Glazed Vienna Maple Cabinetry

Your Style Awaits

There is a good reason Class A value seekers have set their sights on the Sunstar.® Among seven luxurious layouts to choose from, we have added the new triple-slideout 36Y featuring a unique galley design with residential refrigerator, two-tiered galley countertop, dining/buffet with HDTV, plentiful storage, and a walk-around queen bed or available king bed. The available StudioLoft™ drop-down bed provides

even more sleeping space for families on the go. As always, the Sunstar is competitively priced and packed with unexpected value, such as standard MCD blackout roller shades, a powered patio awning, and hydraulic leveling jacks. With so many options built to Winnebago's® legendary quality standards, there is a Sunstar that fits your lifestyle and your budget.



Recognized Quality The Recreation Vehicle Dealer Association annually rates RV manufacturers and awards the Quality Circle Award to manufacturers that provide exceptional products, service, and support. Winnebago is proud to be the only manufacturer that has received this award every year since its inception.

Best in Class

See how Winnebago takes motorhome design and function to the next level, and why we've earned the right to be called the Most Recognized Name in Motorhomes.®



Click on this icon throughout the brochure to link to more information on the web.



The **Extendable Sectional Sofa** (35F) extends to maximize seating for movie nights and turns into a bed for a comfortable sleeping space for your guests.

Enjoy exceptionally comfortable dining in the available **BenchMark® Full Comfort Dinette** (NA 26HE, 31KE, 36Y) with its premium innerspring seating. It can easily convert into a convenient sleeping space, and the seats tilt up providing easy access to storage underneath.

Enjoy even more luxury with the **Interior Upgrade Package** (NA 26HE, 31KE) featuring a galley backsplash, flip-up countertop extension (NA 27N, 36Y), range cover, two sink covers, raised-panel refrigerator inserts (NA 36Y), and more.



The available **Dash Workstation** is the perfect place to plan the next leg of your trip (NA 26HE, 31KE).



Enhance your evenings with the available **Exterior Entertainment Center** with a 32" HDTV (27N, 35B, 35F, 36Y).

With seven floorplans and a large variety of available furniture combinations, the Sunstar lounge offers creative options for the perfect living area. You'll enjoy hosting guests or relaxing in the available Comfort Sofa Sleeper (27N, 30T, 35B) or Extendable Sectional Sofa (35F) while watching the HDTV. Conveniently control the lighting and privacy levels with the MCD solar/blackout roller shades and LED ceiling lights (NA 26HE, 31KE). The cab seats even swivel to face the lounge for additional seating.



35F Inglewood with Coffee-Glazed Vienna Maple Cabinetry



35F Electric Fireplace



35F Available BenchMark Full Comfort Dinette



35F MCD Solar/Blackout Roller Shades (Blackout 26HE, 31KE)



35F Galley

You'll enjoy spending quality time while cooking in this full-featured galley with upscale amenities such as a three-burner range, microwave oven, and a two-door refrigerator/freezer (available four-door refrigerator/freezer with icemaker 35B, 35F, 36Y). Elegant Corian® countertops (laminated in 26HE, 31KE) offer plenty of prep space, while drawers on full-extension slides provide additional storage space for your cooking supplies.



35F Microwave Oven with Range Fan



Full-Extension Drawer Slides



35F Refrigerator/Freezer with Raised Panel Inserts



There are seven different floorplans to choose from, and each master bedroom features a walk-around queen bed, while the new 36Y offers an available king bed. Whether you're looking for a spacious wardrobe (27N, 36Y, 35B), or additional cabinet space with an optional HDTV (27N, 30T, 35B, 35F), the Sunstar has the ideal layout for you. The 35B also comes with twin bunk beds so you can comfortably sleep up to seven people. The bedroom is equipped with a 110-volt outlet that is connected to a 2,000-watt inverter in the 36Y, or 1,000-watt inverter available on most models, allowing access to power when shoreline power is not available.

All bathrooms feature a textured glass shower door, laminate countertops, and an elegant skylight. The 35B and 35F feature a master bathroom complete with the BIG Shower, and the mid-coach bath in the 27N and 36Y has additional storage space as well.



35F Guest Half Bath



35F Bath



35F Shower



Dash

From the Rearview Monitor System to the simple controls for the standard hydraulic leveling jacks, this cab was designed for comfort and convenience. The cab seats feature fixed lumbar support with multi-adjustable slide and recline to keep you comfortable while driving or using the dash workstation (NA 26HE, 31KE). The available sideview cameras offer additional peace of mind (NA 26HE, 31KE).



Radio/Rearview Monitor System



Cab Wraparound Curtain

Automatic hydraulic leveling jacks, exterior paddle latches with dual-latching points, and a powered patio awning make for easy set up. Choose the available exterior entertainment center with a 32" HDTV (27N, 35B, 35F, 36Y) so you can enjoy movie nights in the great outdoors.



Powered Patio Awning



35F Available Exterior Entertainment Center (NA 26HE, 31KE)



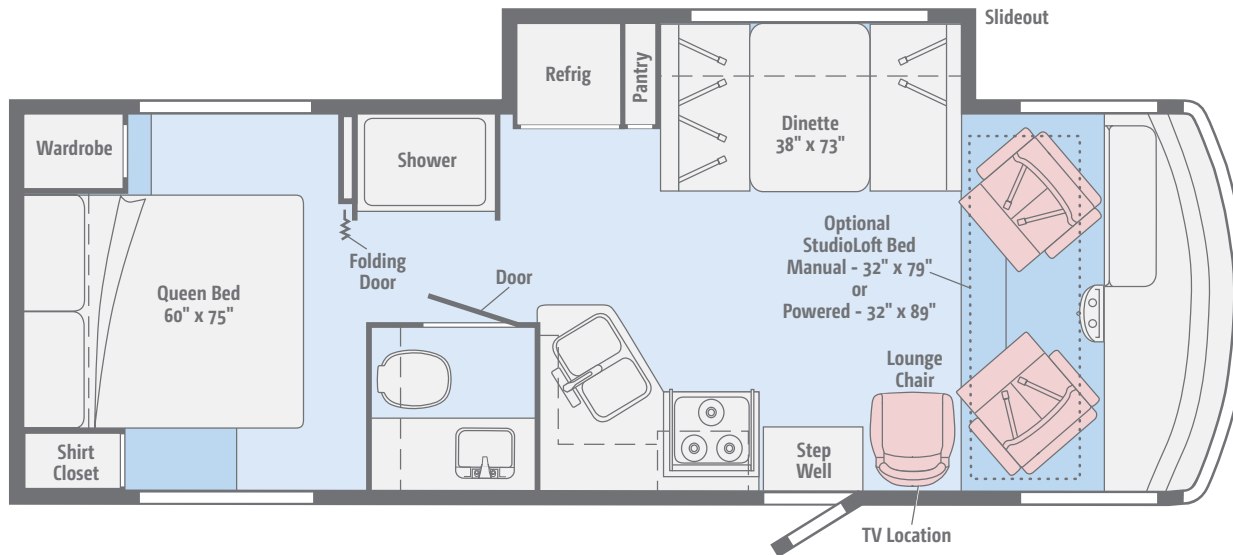
35F Pass-Through Exterior Storage



Stylized Aluminum Wheels (35B, 35F, 36Y)

26HE

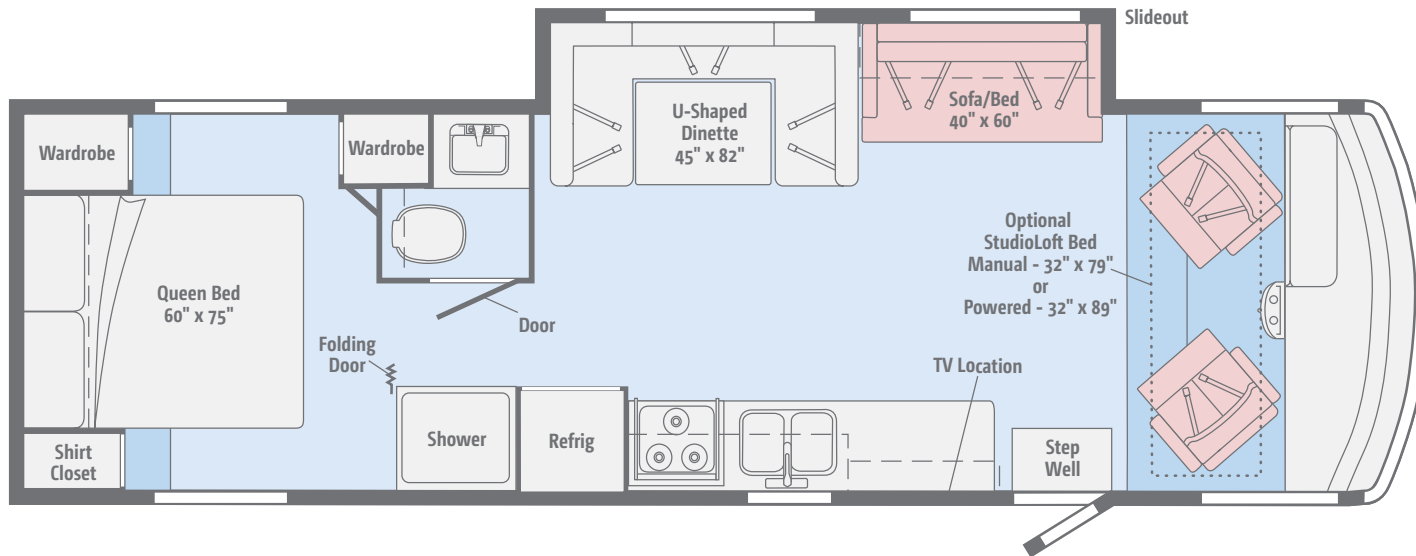
With popular features such as swivel cab seats, a complete galley, and a walk-around queen bed, this is the ideal floorplan for any RV enthusiast.



Dimensions shown are for sleeping space only and may vary due to styling differences. Dashed lines denote overhead storage areas. Floorplans and specifications are also available online at Goltasca.com.

31KE

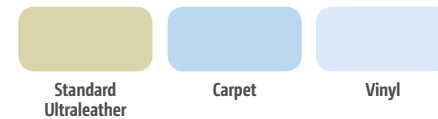
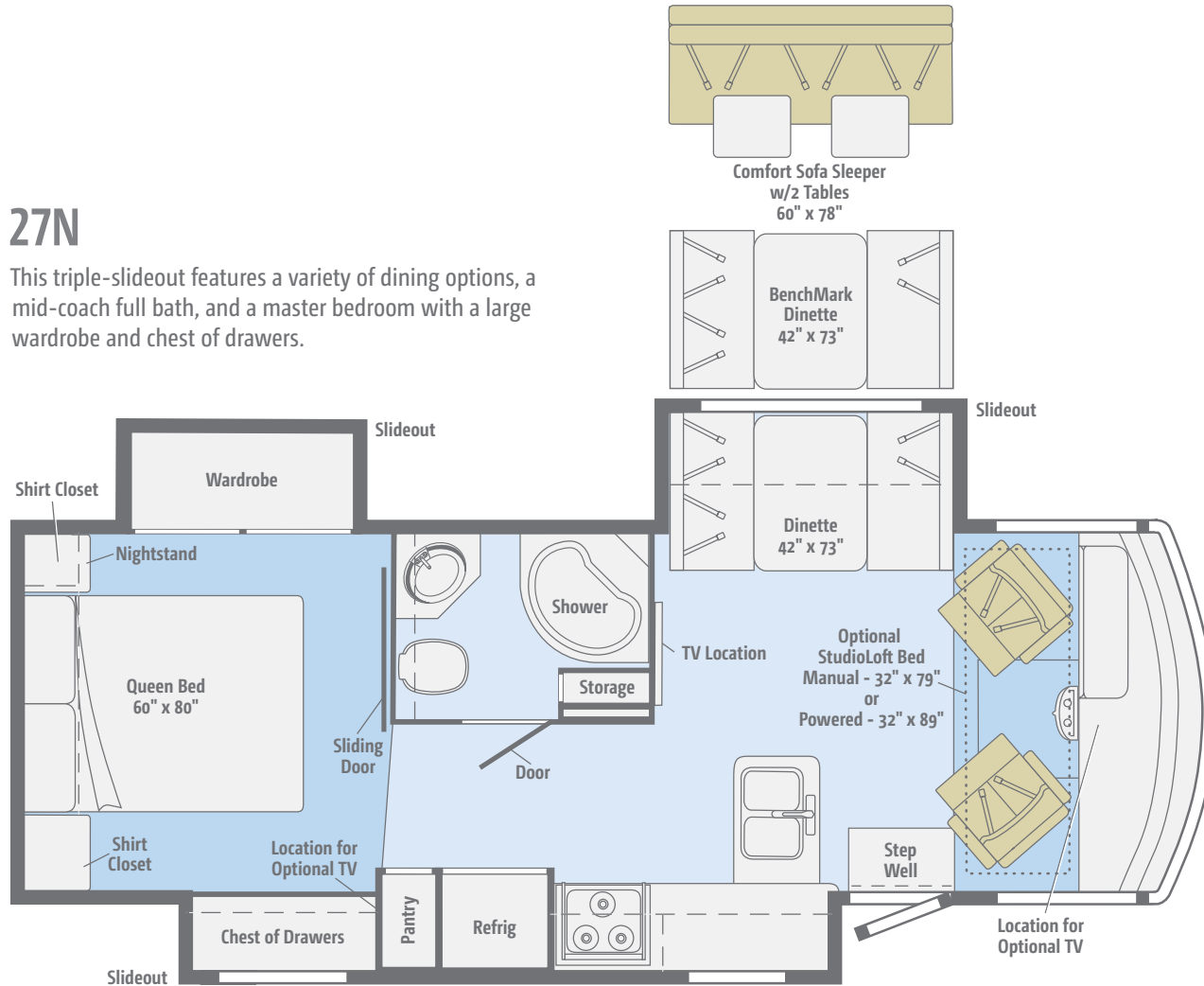
This impressive floorplan features desirable amenities such as a sofa/bed, U-shaped dinette, split bath, shirt closet and wardrobe, and a walk-around queen bed.



Dimensions shown are for sleeping space only and may vary due to styling differences. Dashed lines denote overhead storage areas. Floorplans and specifications are also available online at Goltasca.com.

27N

This triple-slideout features a variety of dining options, a mid-coach full bath, and a master bedroom with a large wardrobe and chest of drawers.



Dimensions shown are for sleeping space only and may vary due to styling differences. Dashed lines denote overhead storage areas. Floorplans and specifications are also available online at Goltasca.com.

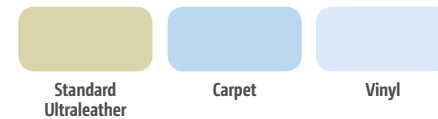
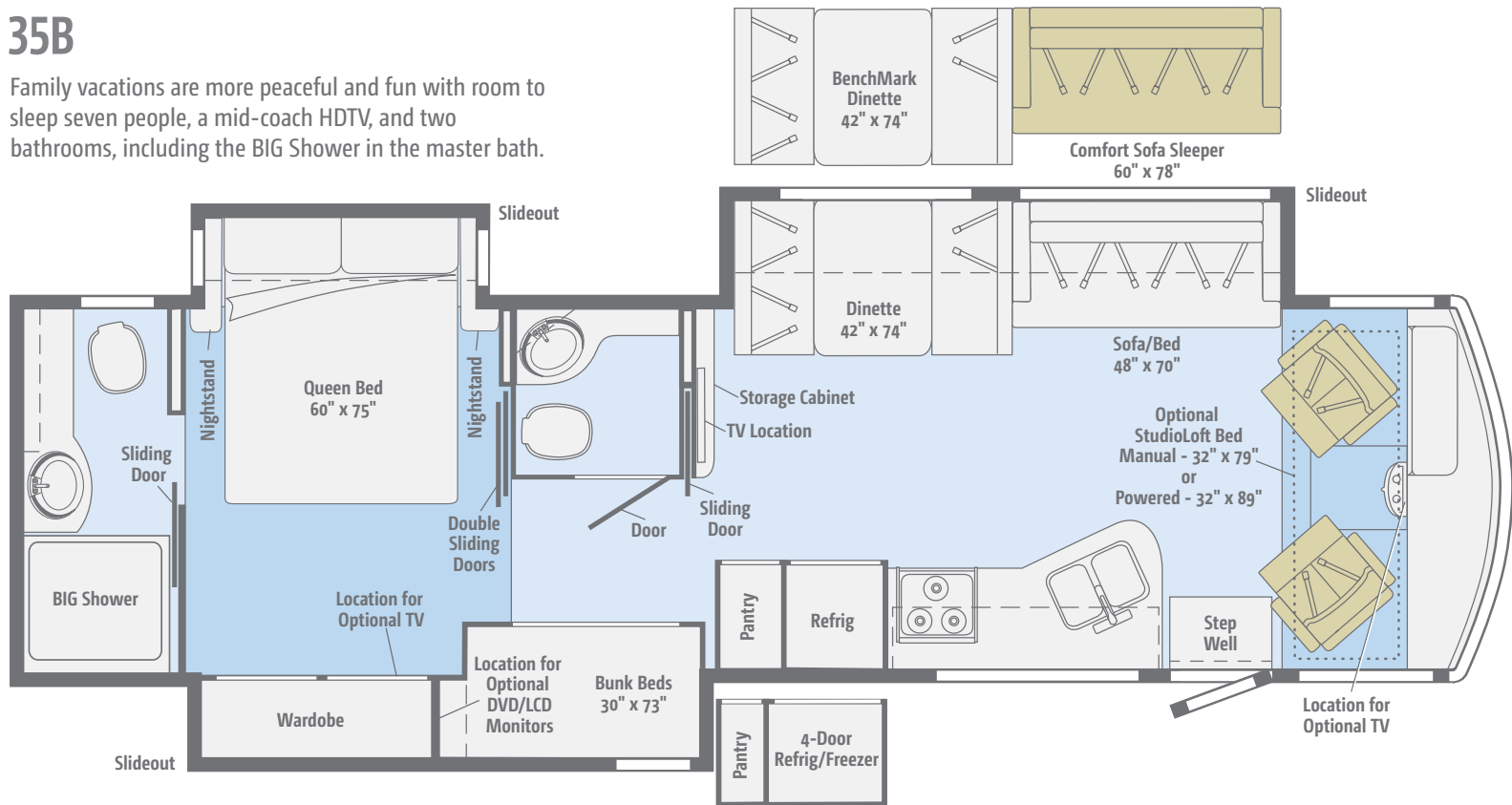
30T

With a variety of furniture choices, this versatile triple-slideout offers a mid-coach split bath, a walk-around queen bed, and twin wardrobes.



35B

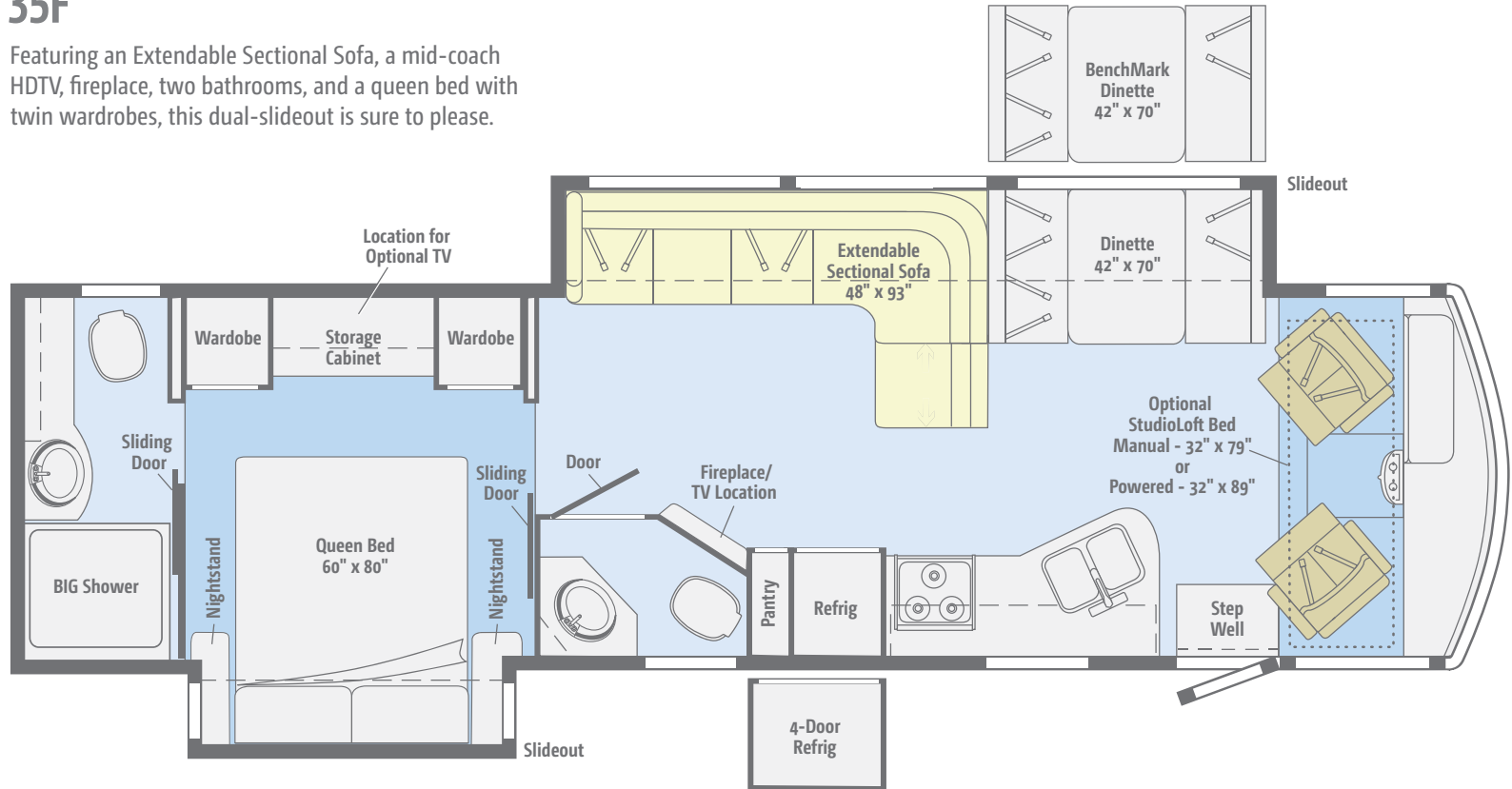
Family vacations are more peaceful and fun with room to sleep seven people, a mid-coach HDTV, and two bathrooms, including the BIG Shower in the master bath.



Dimensions shown are for sleeping space only and may vary due to styling differences. Dashed lines denote overhead storage areas. Floorplans and specifications are also available online at Goltasca.com.

35F

Featuring an Extendable Sectional Sofa, a mid-coach HDTV, fireplace, two bathrooms, and a queen bed with twin wardrobes, this dual-slideout is sure to please.

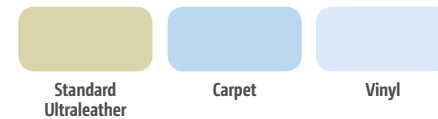
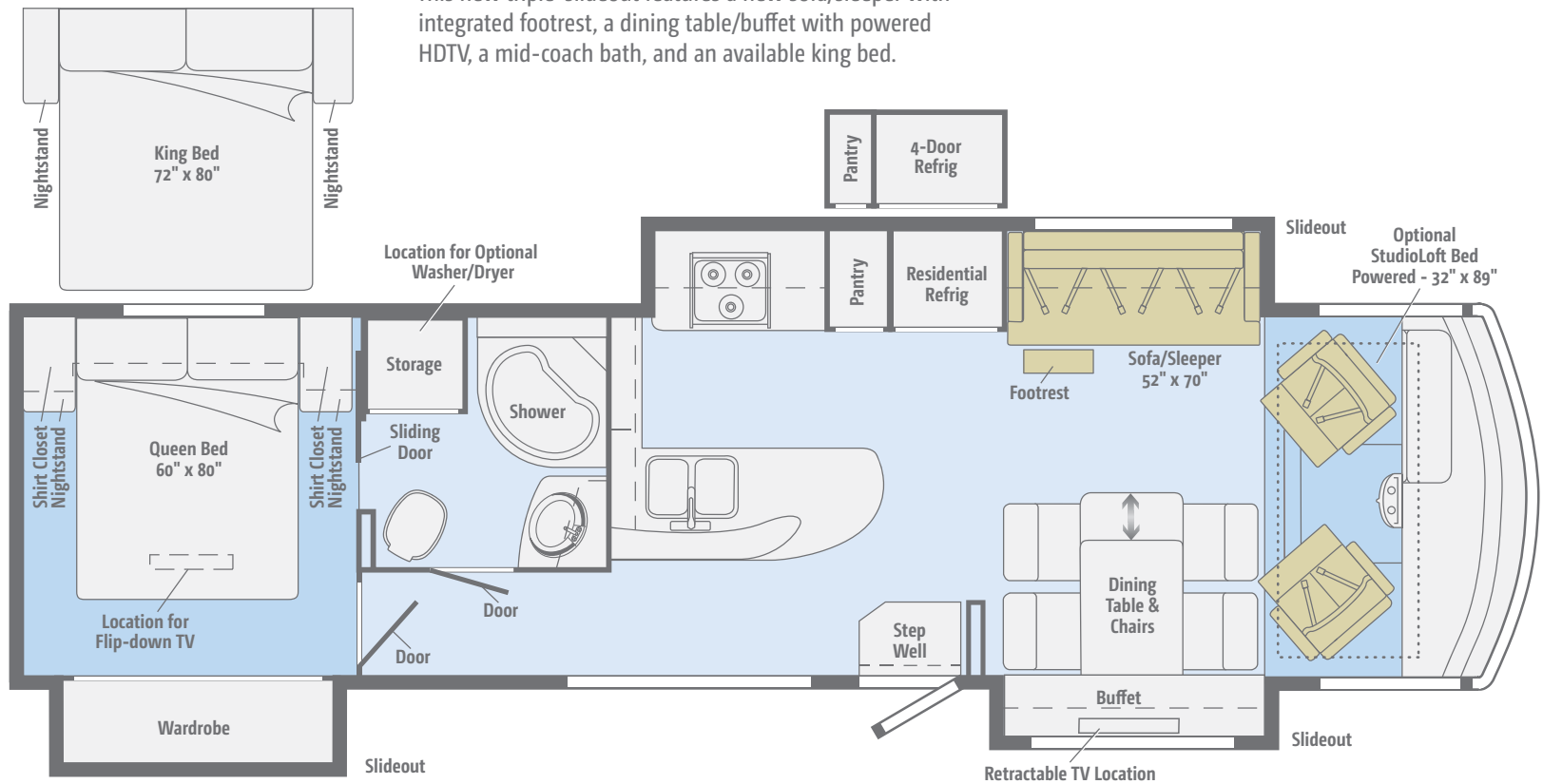


			
Standard Ultraleather	Optional Ultraleather	Carpet	Vinyl

Dimensions shown are for sleeping space only and may vary due to styling differences. Dashed lines denote overhead storage areas. Floorplans and specifications are also available online at Goltasca.com.

NEW 36Y

This new triple-slideout features a new sofa/sleeper with integrated footrest, a dining table/buffet with powered HDTV, a mid-coach bath, and an available king bed.



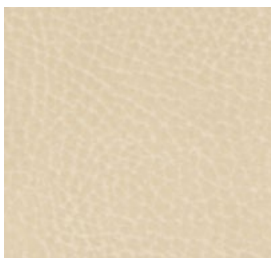
Dimensions shown are for sleeping space only and may vary due to styling differences. Dashed lines denote overhead storage areas. Floorplans and specifications are also available online at Goltasca.com.

Choose from three fabric collections and two wood finishes.

Inglewood



Main



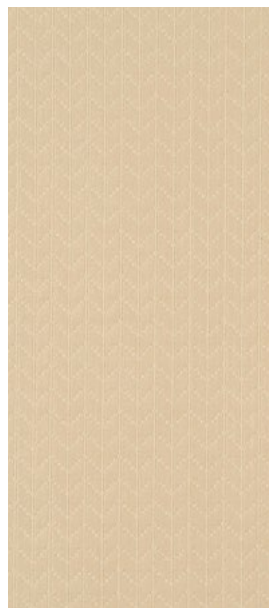
Ultraleather



Primera
(26HE, 31KE)



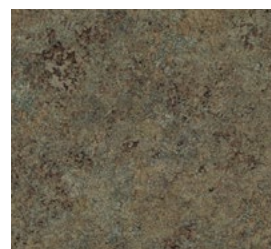
Accent



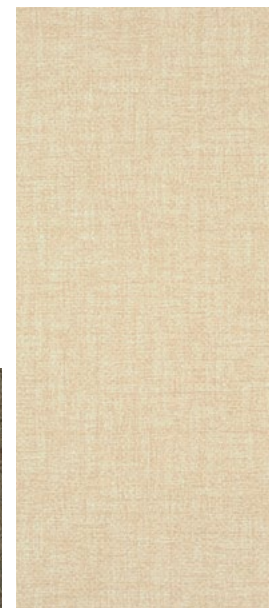
Bedspread



Corian Countertop
(Galley)



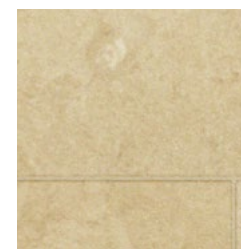
HD Laminate Countertop
(26HE, 31KE)



Wall Board



Carpet



Vinyl



Forest Cherry



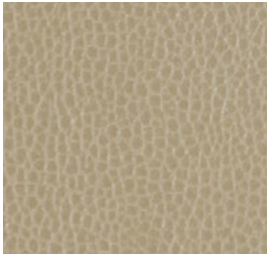
Coffee-Glazed
Vienna Maple
(NA 26HE, 31KE)

Choose from three fabric collections and two wood finishes.

Brownstone



Main



Ultraleather



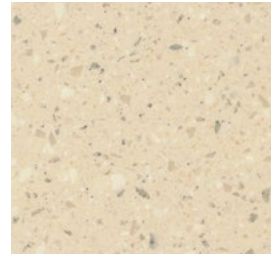
Primera
(26HE, 31KE)



Accent



Bedspread



Corian Countertop
(Galley)



HD Laminate Countertop
(26HE, 31KE)



Wall Board



Carpet



Vinyl



Forest Cherry



Coffee-Glazed
Vienna Maple
(NA 26HE, 31KE)

Winnebago reserves the right to change décor materials and specifications without notice or obligation.

Choose from three fabric collections and two wood finishes.

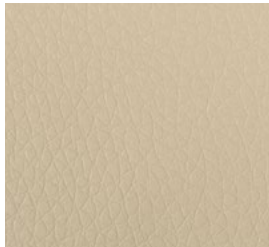
Hudson



Main



Ultraleather



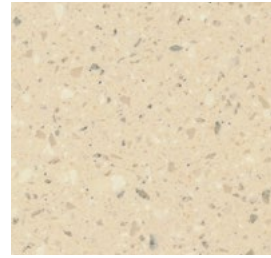
Primera
(26HE, 31KE)



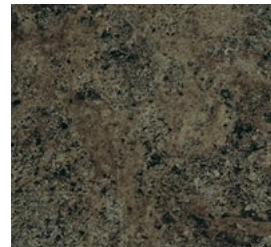
Accent



Bedspread



Corian Countertop
(Galley)



HD Laminate Countertop
(26HE, 31KE)



Wall Board



Carpet



Vinyl



Forest Cherry



Coffee-Glazed
Vienna Maple
(NA 26HE, 31KE)

Winnebago reserves the right to change décor materials and specifications without notice or obligation.

The Sunstar comes with standard graphics or available full-body paint (NA 26HE, 31KE).



Cobblestone
(26HE, 31KE)
STANDARD GRAPHICS



Champagne Gold
(NA 26HE, 31KE)
STANDARD GRAPHICS

The Sunstar comes with standard graphics or available full-body paint (NA 26HE, 31KE).



Cream
FULL-BODY PAINT



Arctic Silver
FULL-BODY PAINT

The Sunstar comes with standard graphics or available full-body paint (NA 26HE, 31KE).



Cayenne
FULL-BODY PAINT



Dark Spiral Gray
FULL-BODY PAINT

Weights & Measures

	26HE	31KE	27N	30T	35B	35F	36Y
Length	27'1"	31'3"	28'3"	31'	36'5"	35'5"	37'
Exterior Height ¹	12'2"	12'2"	12'2"	12'2"	12'5"	12'5"	12'5"
Exterior Width ²	8'5.5"	8'5.5"	8'5.5"	8'5.5"	8'5.5"	8'5.5"	8'5.5"
Exterior Storage ³ (cu. ft.)	117	168	123	118	160	154	145
Awning Length	19'	17'	19'	17'	13'	16'	19'
Interior Height	6'8"	6'8"	6'8"	6'8"	6'8"	6'8"	6'8"
Interior Width	8'0.5"	8'0.5"	8'0.5"	8'0.5"	8'0.5"	8'0.5"	8'0.5"
Freshwater Tank Capacity ⁴ (gal.)	54	64	64	78	93	74	76
Water Heater Capacity (gal.)	6	6	6	6	6	6	10
Holding Tank Capacity - Black/Gray ⁴ (gal.)	43/38	41/57	43/53	41/42	41/46 & 41/51*	41/51 & 21/NA**	48/60
LP Capacity ⁵ (gal.)	18	18	18	18	18	18	18
Fuel Capacity (gal.)	80	80	80	80	80	80	80
GCWR ⁶ (lbs.)	23,000	23,000	23,000	23,000	26,000	26,000	26,000
GVWR (lbs.)	16,000	16,000	18,000	18,000	22,000	22,000	22,000
GAWR - Front (lbs.)	6,500	6,500	7,000	7,000	8,000	8,000	8,000
GAWR - Rear (lbs.)	11,000	11,000	12,000	12,000	15,000	15,000	15,000
Wheelbase	158"	190"	178"	190"	242"	228"	242"

*The 35B uses separate black and gray tanks for each bathroom **The 35F uses separate black tanks for each bathroom

Ford® F53 Chassis

362-hp 3-valve Triton® V10 engine SEFI, TorqShift™ 5-speed automatic transmission w/tow/haul, 175-amp. alternator

Hydraulic brakes w/ABS

Trailer Hitch⁶ 5,000-lb. drawbar/500-lb. maximum vertical tongue weight

7-pin connector

Stainless steel wheel liners w/19.5" tires (26HE, 31KE, 27N, 30T)

Stylized aluminum wheels w/22.5" tires (35B, 35F, 36Y)

Automatic hydraulic leveling jacks

Optional Upgrade Package

Interior Upgrade Package (NA 26HE, 31KE) soft vinyl ceiling, galley backsplash, flip-up countertop extension (NA 27N, 36Y), Dream Dinette™ dining table (NA 36Y), range cover, two sink covers, raised-panel refrigerator inserts, (NA 36Y w/standard refrigerator/freezer) throw pillow(s)

Cab Conveniences

Radio/Rearview Monitor System w/color camera, AM/FM stereo, CD player, 1-way audio, and LCD monitor (26HE, 31KE)

Radio/Rearview Monitor System w/color

camera, 6" touch screen, handheld remote, and iPod®/MP3 input (NA 26HE, 31KE)

Cab seats adjustable armrests, fixed lumbar support, and multi-adjustable slide/recline/swivel

3-point seat belts

Chassis/house battery radio power switch

Power steering w/tilt wheel

Exterior power mirrors w/defrost

Cab wraparound curtain

Cruise control

12-volt powerpoints

Map light(s)

Sunvisors

Dash workstation w/USB and 12-volt powerpoint (NA 26HE, 31KE)

OPTIONAL EQUIPMENT

Sideview video camera system (NA 26HE, 31KE)

6-way power driver seat (NA 26HE, 31KE)

Passenger seat w/footrest (NA 26HE, 31KE)

Dual-speed defroster fans (NA 26HE, 31KE)

SiriusXM™ satellite radio receiver, remote, iPod interface cable/connector (subscription not included) (NA 26HE, 31KE)

Interior

32" HDTV (26HE, 31KE, 30T)

39" HDTV (35F)

46" HDTV (27N, 35B)

Amplified digital TV antenna system

Dining table/buffet/chairs w/retractable 39" HDTV (36Y)

Satellite system ready (NA 26HE, 31KE)

MCD solar/blackout roller shades (lounge, dinette, bedroom) (MCD blackout roller shades 26HE, 31KE)

OnePlace® systems monitor

Powered ventilator fan (lounge, non-power 26HE, 31KE)

Powered ventilator roof vent (27N bedroom)

Powered roof vent (bath)

Tinted windows

Dual-pane windows (NA 26HE, 31KE)

LED lights (NA 26HE, 31KE)

Electric fireplace (35F)

Washer/dryer prep (36Y)

OPTIONAL EQUIPMENT

StudioLoft™ (manual) (NA 36Y)

StudioLoft (powered w/ladder)

Dining table/buffet/chairs w/retractable 39" HDTV (30T)

32" HDTV (front) (27N, 35B)

48" HDTV (27N, 35B)

40" HDTV (35F)

Washer and dryer (36Y)

Vinyl flooring throughout (excludes cab and slideroom floor) (27N, 30T, 35B, 35F, 36Y)

Galley

Corian® countertops (NA 26HE, 31KE)
Laminate countertops (26HE, 31KE)
2-door refrigerator/freezer (NA 36Y)
2-door refrigerator/freezer w/ice maker (36Y)
Microwave oven (26HE, 31KE, 30T)
Microwave oven w/range fan (27N, 35B, 35F, 36Y)
3-burner range w/oven (26HE, 31KE)
3-burner range top w/storage below (27N, 30T, 35B, 35F, 36Y)
Vented range hood (26HE, 31KE, 30T)

OPTIONAL EQUIPMENT

3-burner range w/oven (27N, 30T, 35B, 35F, 36Y)
Microwave/convection oven (30T)
Microwave/convection oven w/range fan (27N, 35B, 35F, 36Y)
4-door refrigerator/freezer w/ice maker (35B, 35F, 36Y)

Bath

Laminate countertop
Flexible showerhead
Textured glass shower door
Skylight
Toilet w/foot pedal (26HE, 31KE)
Porcelain toilet w/foot pedal and sprayer (NA 26HE, 31KE)

Bedroom

Queen bed w/storage below
Bedsprad (26HE, 31KE)
Bedsprad, pillows and shams (27N, 30T, 35B, 35F, 36Y)
Headboard (NA 30T)
Bunk beds w/foam mattresses, mattress covers, and privacy curtains (35B)
28" HDTV (36Y)
Queen innerspring mattress (27N, 30T, 35B, 35F, 36Y)
Queen foam mattress (26HE, 31KE)

OPTIONAL EQUIPMENT

2 DVD players w/10.1" LCD monitors and headphones (35B bunk beds)
22" HDTV w/cable wall input (27N, 30T)
28" HDTV (35B)
32" HDTV (35F)
King bed w/innerspring mattress, pillows and shams (36Y)

Exterior

Premium high-gloss sidewall skin
Automatic entrance door steps
Powered patio awning
Front mud flaps
Porch light
LED lighted storage compartments (in select compartments)
Ladder (NA 26HE, 31KE)

OPTIONAL EQUIPMENT

Lower front protective mask (w/full-body paint only)
Entertainment Center AM/FM stereo, CD player, remote, AC duplex, DC receptacle, removable TV table, speakers and lockable compartment (30T)
Entertainment Center 32" HDTV w/remote, AM/FM stereo w/DVD player w/remote, speakers (27N, 35B, 35F)
Entertainment Center 32" HDTV w/remote (36Y)

Heating & Cooling System

14,800 BTU air conditioner w/ChillGrille™ (26HE, 31KE, 27N, 30T)
2 high-efficiency air conditioners w/ChillGrille and Energy Management System (35B, 35F, 36Y)
30,000 BTU low-profile furnace (26HE, 31KE, 27N, 30T)
40,000 BTU low-profile furnace (35B, 35F, 36Y)

OPTIONAL EQUIPMENT

Air conditioner heat pump (27N, 30T)
2 high-efficiency air conditioner heat pumps (35B, 35F, 36Y)
All-Weather Upgrade Package (30T) 5,500-watt Cummins Onan® Marquis Gold™ gas generator, 2nd high efficiency A/C with heat pumps, 50-amp. power cord, automatic changeover switch, shoreline/generator

Electrical System

AC/DC load center, 45-amp. converter/charger (26HE, 31KE, 27N, 30T)
AC/DC electrical distribution system, 45-amp. converter/charger (35B, 35F)
AC/DC electrical distribution system, 55-amp. converter/charger (36Y)
30-amp. power cord (26HE, 31KE, 27N, 30T)
50-amp. power cord, shoreline/generator automatic changeover switch (35B, 35F, 36Y)
PowerLine® Energy Management System (27N, 35B, 35F, 36Y)
4,000-watt Cummins Onan MicroQuiet gas generator (26HE, 31KE, 27N, 30T)
5,500-watt Cummins Onan Marquis Gold™ gas generator (35B, 35F, 36Y)
2 deep-cycle Group 24 batteries (NA 36Y)
4 deep-cycle Group 31 batteries (36Y)
Battery disconnect system (chassis) (NA 26HE, 31KE)
Battery disconnect system (coach)
Automatic dual-battery charge control
Auxiliary start circuit
AC Duplex receptacle
2,000-watt AC/DC inverter w/remote panel (36Y)
Cable TV input
Portable satellite dish hookup, power cord
Automatic generator start system (36Y)

OPTIONAL EQUIPMENT

1,000-watt AC/DC inverter w/remote panel (NA 26HE, 31KE, 36Y)

Plumbing System

Service Center colored labels, pressurized city water hookup w/diverter valve, drainage valves, exterior wash station w/lighted pump switch (NA 26HE, 31KE), 10' sewer hose
6-gallon LP water heater w/electronic ignition (26HE, 31KE)
6-gallon 110-volt/LP water heater w/motoraid (27N, 30T, 35B, 35F)
10-gallon 110-volt/LP water heater w/motoraid (36Y)
Heated holding tank compartment

Permanent-mount LP tank w/gauge
On-demand water pump
TrueLevel™ holding tank monitoring system
Winterization Package water heater bypass valve and siphon tube
LPG accessory connection (patio area) (NA 26HE, 31KE)
Gravity tank fill w/lockable door (NA 26HE, 31KE)
Holding tank flushing system (black tank only) (NA 26HE, 31KE)

Safety

Child seat tether anchor (forward facing dinette seat) (NA 36Y)
LP, smoke, and carbon monoxide detectors
10 BC fire extinguisher
Ground fault interrupter
High-mount brake lamp

Warranty⁷

12-month/15,000-mile basic limited warranty⁸
36-month/36,000-mile limited warranty on structure⁸
10-year limited parts-and-labor warranty on roof skin⁸

- The height of each model is measured to the top of the tallest standard feature and is based on the curb weight of a typically equipped unit. The actual height of your vehicle may vary by several inches depending on chassis or equipment variations. Please check with your dealer for further information.
- The floorplans feature a wide-body design – over 96". In making your purchase decision, you should be aware that some states restrict access on some or all state roads to 96" in body width. Before making your purchase decision, you should confirm the road usage laws in the states of interest to you.
- The load capacity of your motorhome is designated by weight, not by volume, so you cannot necessarily use all available space when loading your motorhome.
- Capacities are based on measurements prior to tank installation. Slight capacity variations can result due to installation applications.
- Capacities shown are tank manufacturer's listed water capacity (W.C.). Actual filled LP capacity is 80% of listing due to overfilling prevention device on tank.
- Actual towing capacity is dependent on your particular loading and towing circumstances which includes the GVWR, GAWR, and GCWR as well as adequate trailer brakes. Please refer to the Operator's Manual of your vehicle for further towing information.
- See separate chassis warranty.
- See your dealer for complete warranty information.

NA Not Available

Not all items available in combination. See dealer for details.

Winnebago's® continuing program of product improvement makes specifications, equipment, model availability, and prices subject to change without notice. Published content reflects the most current product information at time of printing. Please consult your dealer for individual vehicle features and specifications.

Goltasca.com Has All The Answers



Visit Goltasca.com on your computer, smartphone or tablet for the latest product information and updates.

go LIFE

Welcome to GoLife!

Visit our lifestyle blog for motorhome news, personal travelogues, and community stories.



WINNEBAGOLIFE.COM

PREFERRED CARE PROGRAM

We back our motorhomes with best-in-class support both before and after the sale:

- 12-month/15,000-mile basic limited warranty
- 36-month/36,000-mile limited warranty on structure
- 10-year limited parts-and-labor warranty on roof skin
- Complimentary 24-hour roadside assistance program



TRIPSAVER
FAST TRACK PARTS
WINNEBAGO

- TripSaver® Fast Track Parts guarantees that in-stock warranty parts ship directly to your dealer within 24 hours
- National dealer service network



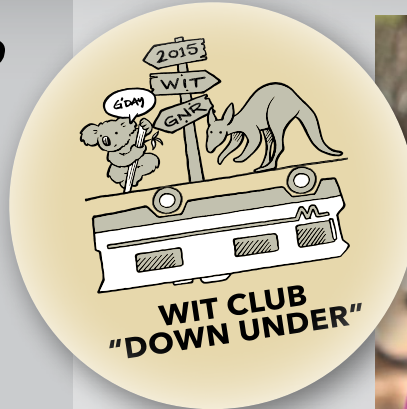
For more information, visit us at WGOService.com



WIT CLUB

Join the Club, Join the Fun

Here's the perfect way to begin your life on the road as the owner of a new Winnebago – by joining the exclusive WIT Club. Start your adventure with other fun-loving WIT Club members from across the country and get the most out of your new Winnebago motorhome.



WIT CLUB
"DOWN UNDER"

Members enjoy:

- Caravans and rallies
- Newsletters
- Local and state group activities
- RV travel benefits

See more at WITclub.com



©2014 Winnebago
Seat belts are your most important hookup. Always buckle up.

Grand National Rally

G'day mates! Explore the outback at this year's "Down Under" Grand National Rally. Each year, thousands of Winnebago owners descend upon the land down under – a.k.a. Forest City, Iowa.



Rally-goers enjoy an unforgettable week reconnecting with friends, taking tours, participating in activities, and more. Hop on down and join the adventure this July!