

EXCURSION

CLASS A DIESEL

**WHAT A FIVE-STAR HOTEL LOOKS
LIKE ON SIX WHEELS.**



2008 EXCURSION

 **FLEETWOOD**



LIFE IS BETTER AT THE TOP.

For those who live life on a grand scale, Excursion is a motor home of equal magnitude. With a heightened sense of style and the finest amenities, Excursion wraps you in a bubble of luxury wherever you travel. The lush fabrics, the natural grained wood cabinetry and contemporary appliances all work together beautifully. Just like a designer home, crown molding and halogen dimmers are used throughout. In fact, our new 40X model features a 40" Samsung® LCD HDTV in the center of the coach for a home theatre experience. You have high expectations... Excursion surpasses them.

Quality



There's no cutting corners. Skilled craftsmen build every Fleetwood RV for maximum durability and longevity.



EXCURSION



WHY BUY EXCURSION?



Impressive Exterior

The sheer sophistication of Excursion is striking. Be prepared to turn a lot of heads.



Excursion 40X shown in Coriander interior décor with Plantation Cherry wood cabinetry.



Two Euro-Style Recliners provide the best seats in the house to watch a movie. And not just any seats – these are ultra-stylish, covered in genuine leather, and accompanied by sleek ottomans. A table folds down for your convenience. Standard in the 40X model, optional in other models.



The Front Entertainment Center is like your own private movie theater. After a day at the beach, you might watch a surf movie on the 26" Samsung® LCD HDTV (optional for the 40X model), DVD player and Dolby® 5.1 theater sound system with front, rear and center speakers, and a subwoofer. Or, enjoy home movies or video games with the RCA TV jacks.

Cummins® 360HP Diesel Engine

As one of the finest performing diesel engines in the world, this Cummins® ISC 8.3L engine provides mighty power underfoot.

Luxurious Décor

With decorator touches coordinated throughout, it's as nice as a grand hotel.

Top-Of-The-Line Components

Just as you'd expect, the coach is equipped with brand name appliances, electronics and furnishings.

Upscale Conveniences

Excursion anticipates your every need, with an array of conveniences to save you time and trouble.

Spacious Floor Plan Designs

Choose from six floor plans to fit your personal style, including two with full-wall slide-outs.



A DISPLAY OF YOUR GOOD TASTE.

With its sleek lines and high-end appliances, the galley is as beautiful as it is functional. We've used the very best components, from the solid surface countertops to the exquisite cabinetry to the stainless steel finishes. Of course, the appliances are brand names you trust, such as Norcold® and GE®. And to keep them running flawlessly, we've added a 2000-watt pure sine inverter to deliver clean, pure AC power.

Trust



More people trust Fleetwood. After all, we've spent over 50 years perfecting RVs, earning the loyalty of generations of RVers.



EXCURSION



The Residential Grade Sink and Faucet features a Blanco™ stainless steel double sink with a clean, contemporary look. The artful wand faucet features single-lever control, with dispensers for soap and hand lotion.



The Free-Standing Dinette with Credenza (optional) would fit right in at a fine restaurant, and its slim profile frees up more floor space. The credenza is the perfect place for a few candles so you can enjoy dinner by candlelight.



The Central Vacuum (optional) tidies your carpet so your home is ready for company – without pushing around a heavy motorized vacuum. Those hard-to-clean places, like the dashboard and the blinds, are perfect for the attached tools. The bag from your Dirt Devil® empties from the outside, so the dirt stays out.



The Galley features a Norcold® 12 cu. foot refrigerator in a four-door model (optional wood inserts shown) with a water dispenser in the door and an ice maker to cool your drinks. In addition to the 3-burner stove, the GE® convection microwave cooks and bakes food in a fraction of the time of an oven.


Fully Extending Drawers allow you to store things at the very back.



The Cabinetry features solid wood doors with raised panels, just as if it was custom-made.

The Under Counter TV with DVD Player (optional) is sure to be the chef's favorite toy. You can flip down the 10" LCD TV, swivel it to the best view, and make a recipe along with your favorite cooking show. The system also includes a CD player and AM/FM radio.





THERE'S NO TIPPING REQUIRED.

It's easy to mistake the bedroom for a hotel suite. All the hallmarks are here: the posh décor, pampering conveniences and spacious layout. In fact, the new 30" bedroom slide-out delivers more room than ever before (not offered on the 39L model). Reading in bed by luminous halogen lighting, you may feel as if you're staying in a grand hotel. But then you remember – you haven't had to unpack and repack at every stop on your trip.

Passion



We're truly passionate about the RV lifestyle. Fleetwood was founded by RV enthusiasts, and that tradition continues today.



EXCURSION



The Bathroom provides a lavish setting to get ready for the day. Start off with a water massage from the adjustable showerhead. Rinse your razor under the sparkling Moen® faucet gracing the solid surface countertop. The cabinetry holds your cosmetics and grooming supplies, with vanity lighting and mirror to help you look your best.



The Washer/Dryer Combo (optional) performs double duty, washing and drying your clothes while you roll down the highway. It's hidden away behind handsome cabinetry.



The Bedroom Entertainment Center brings your favorite shows to your bedside with a wall-mounted 26" Samsung® LCD HDTV and home theater (39L and 40X models; 19" Samsung® LCD in other models.) Below sits the handsome dresser, providing first-class accommodations for your linens.

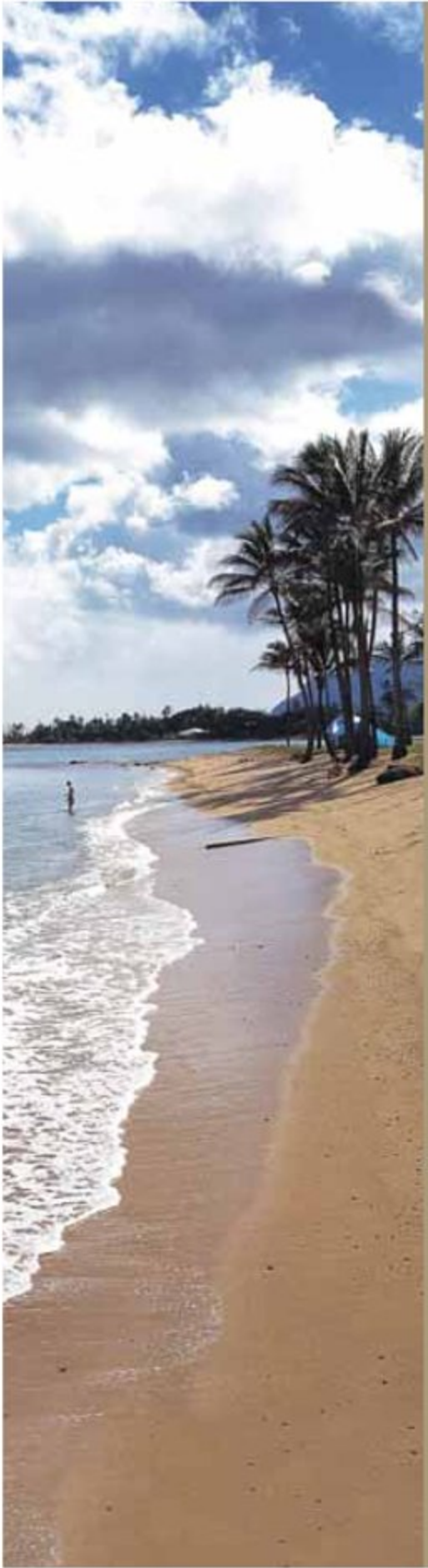
The Cedar-Lined Wardrobe keeps your clothing well organized and wrinkle-free. Heading out for a night at the theater? Double-check your appearance in the full-length mirror, then give yourself a standing ovation!



The Bedroom Suite includes a heavenly Restonic® queen-size pillowtop innerspring mattress. Before you nod off, flick the bedside switch to turn the generator off. In the morning, your first step is onto the plush Fabrica™ carpeting. Even your feet feel pampered.

The Adjustable Air Mattress (optional) ends pillow fights. You like the mattress soft, and your other half likes it firm? No problem, just customize each side independently with the remote at your bedside.





**THIS FIVE-STAR
RESORT HAS 360
HORSEPOWER.**

No matter how ritzy, a hotel simply can't travel with you. Yet Excursion can. You'll enjoy trips through picturesque landscapes, crystal clear behind your expansive, one-piece windshield. The rolling hills slide by effortlessly, thanks to 360 horses under your foot.



EXCURSION



The Ultraleather™ Driver and Passenger Seats feature sleek lines and designer style with supple Ultraleather™ covering. But their real beauty is inside. They've been engineered to reduce fatigue during those long hours on the road with a Flexsteel® frame and adjustable armrests. The seats are heated to keep you cozy in the cold, and the passenger seat includes a power footrest.



Power Visors cut the sun's glare with the touch of a button, allowing you to make adjustments with precision. And when it's time for privacy, the visors extend all the way to the dash to close out the world.



The Cockpit Area wraps around you to deliver a superior driving experience. Even the steering wheel tilts and telescopes to suit your frame. The drive flies by with an AM/FM radio with CD player and it's Sirius Satellite Radio® ready.



The 360HP Cummins® ISC 8.3L Engine powerfully pushes you over hills and through valleys with 1050 foot pounds of torque. It also has the muscle to tow a vehicle behind you for touring the nearby town.



Keyless Remote Entry lets you lock and unlock your Excursion with the push of a button. It also turns a light on in the coach to help you see in the dark.



The Ergonomically Designed Instrument Panel places all the controls at your fingertips for a smooth driving experience. The large, backlit gauges are easy to read at a glance, even at night. And the Information Center continuously monitors your coach's performance.



The Color Back-Up Monitor lets you see what's behind you. The rear camera allows you to check your towed vehicle and view behind it.

PRESTIGE BY THE FOOT, BEAUTY BY THE MILE.

The sheer size of Excursion is remarkable, but once you look closer, there's even more to appreciate. The ultra-smooth sidewalls, with their highly polished paint, reflect light as if you're looking in a mirror. Excursion's full-body paint is carefully applied using a two-step process and DuPont® paint for maximum durability and undeniable beauty.

Pacific Blue
SCHEME 1*



Mocha
SCHEME 1*



Iron
SCHEME 1*



Raceway Red
SCHEME 1*



White Diamond
SCHEME 1*



Raceway Red
SCHEME 2*



* Each color is available in both Scheme 1 and Scheme 2 graphics. See your Fleetwood dealer or visit our website at www.fleetwoodrv.com to view all graphic and color choices.



EXCURSION

DAZZLE THEM WITH YOUR DÉCOR.

Friends will be impressed with your sense of style. You don't have to tell them it was as easy as picking one fabric palette and one wood finish. Our designers coordinated everything from the designer lighting to the fabric patterns, but you can pocket the compliments.

CARBON

Living/Dining Room



Sofa



Dinette Cushions



Ultraleather™
Driver and Front
Passenger Seats,
Sofa (optional)

Bedroom



Bedspread



Pillow Shams



Throw Pillows

CINNABAR

Living/Dining Room



Sofa



Dinette Cushions



Ultraleather™
Driver and Front
Passenger Seats,
Sofa (optional)

Bedroom



Bedspread



Pillow Shams



Throw Pillows

CORIANDER

Living/Dining Room



Sofa



Dinette Cushions



Ultraleather™
Driver and Front
Passenger Seats,
Sofa (optional)

Bedroom



Bedspread



Pillow Shams



Throw Pillows

WOOD FINISHES



Windsor Birch



Summit Ash



Plantation Cherry

YOU'VE GOT THE WORLD BY THE TAILLIGHTS.

Excursion owners enjoy a wide range of amenities, even on the outside. Here are just a few of our favorites.

- ① **Electric Awnings** for the patio and entry door provide a shady outdoor area to sip ice tea and enjoy the fresh air. And should the wind kick up when you're out on the links, the awnings will retract, thanks to the wind sensor on the main awning.
- ② **The Illuminated Entry Handle** glows from within, helping you to see at night and accenting your coach dramatically.
- ③ **Stylish Chrome Heated Mirrors** add sparkling flair, and stay warm to prevent dew or frost build-up for a clearer view.
- ④ **The Front Cap**, redesigned for 2008, exudes sophistication with raised chrome logos.



Vehicle shown in Mocha Scheme 1 exterior graphics.

- ① **Dual Air Conditioning Units** are mounted on top to improve cooling, and create more room for storage below.
- ② **Storage Compartments** feature insulated aluminum doors and gas-lift strut supports. You can open the single paddle latches with one hand, and the lighted interiors help you see your gear at night.
- ③ **High-Mounted Taillights** are easy to see, even over towed vehicles, to warn tailgaters away.
- ④ **4-Point Automatic Leveling System** levels your coach at the push of a button.



Vehicle shown in Mocha Scheme 1 exterior graphics.



Diamond Shield (optional) protects your paint finish on the lower front cap from paint chips and damage caused by road debris, bug acids and weathering. This clear, 8 mil. urethane film will preserve the beauty of your Excursion for years to come.



Side View Cameras (optional), mounted on the left and right sidewalls, transmit to the driver's area monitor. The cameras are controlled by the driver to help you see blind spots in the adjacent lanes. Once you're docked, they're handy for extra security.



The Spotlight (optional) sheds some light on your after-dark beach party. Who needs tiki torches when you can move the spotlight easily with a wireless remote?



The Utility Compartment lets you empty the holding tanks from one central place. And the water sprayer rinses your sandy feet after a stroll on the beach.



Exterior Entertainment Center (optional) lets you watch the big game outdoors, with a better view than most ticket-holders. It features a 19" Samsung® LCD HDTV that folds neatly out of the way, and an AM/FM radio with a CD/DVD player.



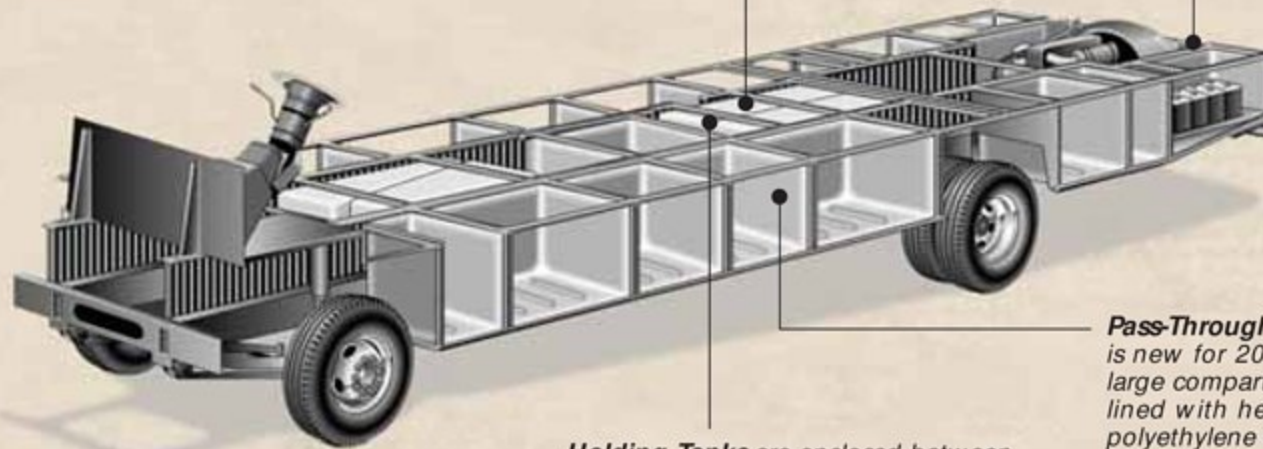
Exterior Grill And Kitchenette (optional) extends with a push of a button so you can hold a backyard-style barbecue anywhere. Includes a propane grill, refrigerator, sink with hot and cold running water, storage areas, and even outlets for your blender.

THE POWER PLATFORM®. BECAUSE YOU HAVE A LOT RIDING ON THIS.

Fleetwood's patented Power Platform® is as strong as they come. It begins with two ten-inch steel I-beams welded to the chassis, with steel outriggers extending outward. Together, they create a basement for the fluid tanks and storage, while supporting the floor, walls and roof with a rigid metal frame. The 2008 models feature pass-through storage along with the EZ Store Compartment to provide an amazing amount of storage.

Vehicle Stability is enhanced because the holding tanks are positioned in the bottom center of the platform.

Large Towing Capacity lets you tow most vehicles with ease†.

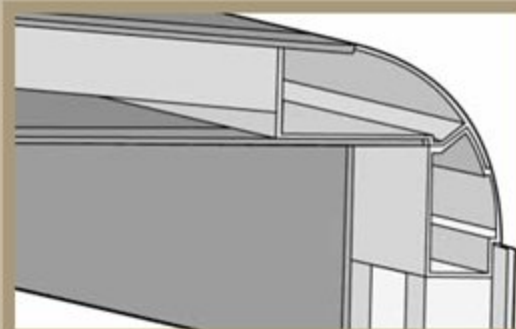


Holding Tanks are enclosed between the upper and lower basement floors so they can be heated in cold weather to help prevent freezing.

Pass-Through Storage is new for 2008. This large compartment is lined with heavy-duty polyethylene so you can hose it out easily.

Drawings are for illustrative purposes only to highlight aspects of motor home construction. Actual motor home design depends on model and is subject to change.

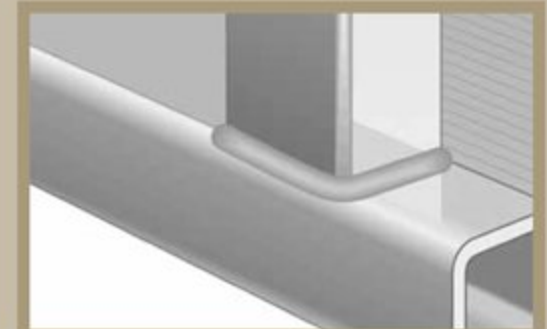
† The chassis manufacturer recommends the installation of a supplemental brake control system to activate the brakes on the vehicle or trailer you are towing. Hitch receiver ratings expressed are maximum for the hitch receiver installed and may require the purchase of additional equipment that is dependent on the weight of the towed load. Consult with hitch receiver manufacturer for further information.



Interlocking Ceiling-to-Sidewall Construction helps keep the box square. This assures a proper cabinet fit.



Interlocking Floor-to-Sidewall Construction locks tightly to keep out water, dust and noise, and helps eliminate squeaks and rattles.



Vacu-Bond® Sidewall Construction creates a strong, weather-resistant structure. All sidewalls, floors and ceilings are Vacu-bonded to a durable metal frame, far superior to the pinch roll method our competitors often use.



The EZ Store Compartment holds long, bulky items like golf equipment, coolers, and more. It's lined with a special polyethylene material that's easy to clean so your golf bag stays nice.



Pass-Through Storage is new on Excursion for 2008. This big space holds chairs, sports gear and more – and you can access it from either side of the coach. The 40E model features two pass-through compartments.



The Pull-Out Basket keeps your smaller items together so they don't get scattered. It's a great place to stock your extra refreshments before they move to the refrigerator.



THE MOST IMPORTANT FEATURE IN EXCURSION: PEACE OF MIND.

Fleetwood engineers have designed dozens of safety features into Excursion. They've thought of everything from blind-spot cameras (optional) to help you change lanes safely, to the safety inspection checklist on the information center monitor, to the four-wheel ABS air brakes. We're proud to say we meet all Federal Motor Home Vehicle Safety Standards to protect you. Combined with Fleetwood's superior construction, the result is a coach you can depend on for high quality and safety.

Safety



You've got precious cargo. So we've engineered dozens of innovative safety features into our motor homes to give you more peace of mind.



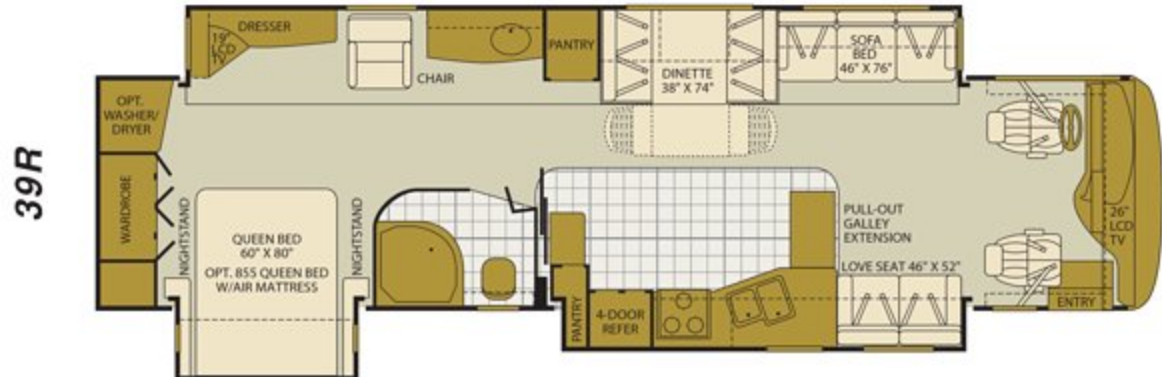
EXCURSION

EXCURSION FLOOR PLANS



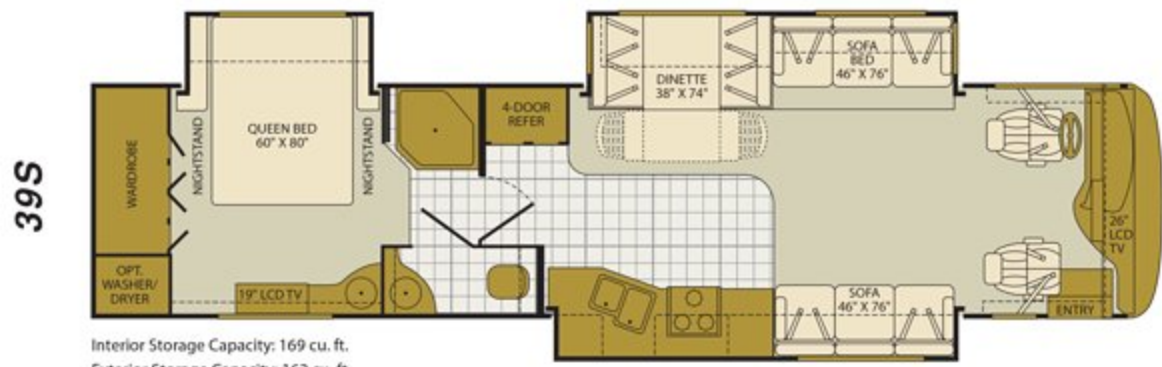
Interior Storage Capacity: 182 cu. ft.
Exterior Storage Capacity: 162 cu. ft.

- Seating for up to 13 people in the huge dining and living room
- Cozy window seat in the second bedroom slide-out
- Available Options: 113, 126, 127, 128, 149, 173, 197, 200, 497, 821, 832, 833, 874



Interior Storage Capacity: 243 cu. ft.
Exterior Storage Capacity: 201 cu. ft.

- Industry leading full-wall slide with opposing slide in the living room
- Residential dresser in the bedroom with multiple drawers
- Available Options: 113, 126, 127, 128, 149, 173, 197, 200, 497, 821, 832, 833, 874













Interior Storage Capacity: 169 cu. ft.
Exterior Storage Capacity: 162 cu. ft.

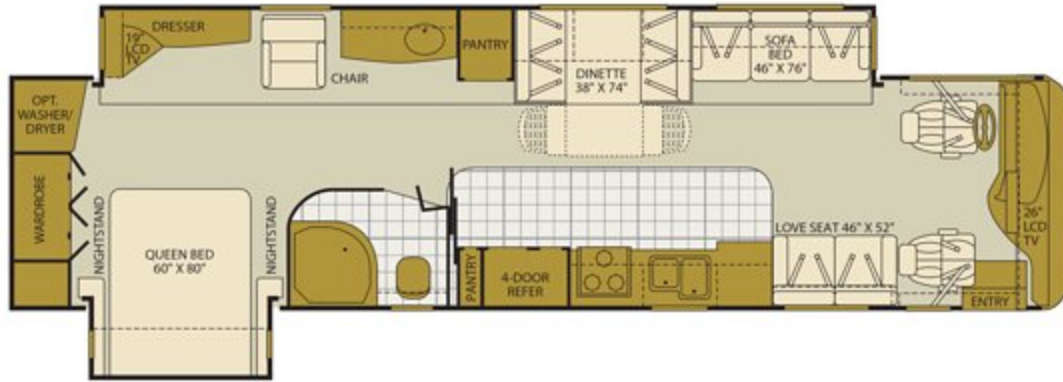
- Wide open living room and galley for extended use
- Second sink in the bedroom increases versatility
- Available Options: 113, 126, 127, 128, 149, 197, 200, 497, 804, 832, 833

Seatbelt configuration may vary depending on options chosen.

OPTIONS

					
OPT. 113 3-BURNER RANGE W/OVEN	REFER	LOVE SEAT 46" X 52"	SOFA BED 46" X 76"	TABLE	SOFA SLEEPER 59" X 71"
	OPT. 128 DOMETIC 14 CU. FT. SIDE BY SIDE STAINLESS STEEL REFER				
OPT. 126 WASHER/ DRYER	OPT. 127 DOMETIC 14 CU. FT. SIDE BY SIDE WITH WOOD INSERT DOOR PANELS	OPT. 173 ULTRALEATHER LOVE SEAT	OPT. 174 ULTRALEATHER SOFA BED W/END TABLE AND LAMP	OPT. 197 DUAL SWIVEL RECLINERS W/TABLE	OPT. 200 ULTRALEATHER SOFA SLEEPER W/AIR MATTRESS
	OPT. 149 NORCOLD 4-DOOR WITH WOOD INSERT DOOR PANELS				
					OPT. 201 ULTRALEATHER SOFA SLEEPER W/AIR MATTRESS
					
					OPT. 497 PASSENGER SEAT W/FOOTREST

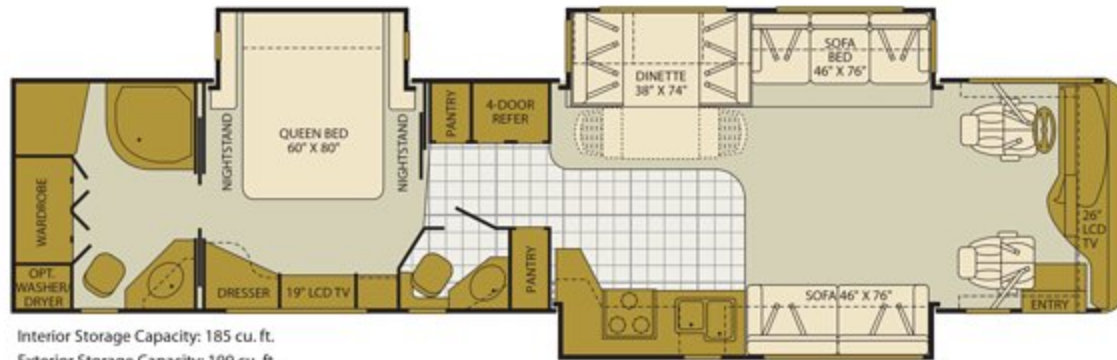
39V



Interior Storage Capacity: 185 cu. ft.
Exterior Storage Capacity: 189 cu. ft.

- Industry leading full-wall slide floor plan
- Large counter space for functional entertaining
- Available Options: 113, 126, 127, 128, 149, 173, 197, 200, 497, 821, 832, 833

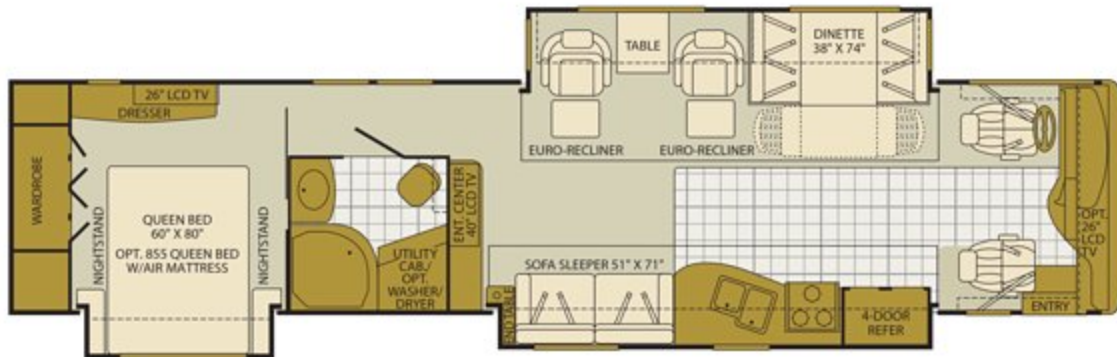
40E



Interior Storage Capacity: 185 cu. ft.
Exterior Storage Capacity: 199 cu. ft.

- Unique in class rear bath, bath and a half layout
- Seating for up to 14 people in the living and dining room
- Available Options: 113, 126, 127, 128, 149, 197, 200, 497, 804, 832, 833

40X



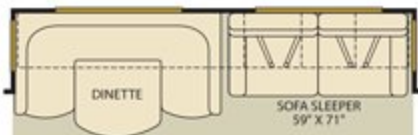
Interior Storage Capacity: 209 cu. ft.
Exterior Storage Capacity: 206 cu. ft.

- Industry leading mid-coach home theater floor plan
- Side aisle bathroom for maximum privacy and space
- Available Options: 113, 126, 127, 128, 149, 174, 201, 497, 635, 832, 833

Service



Help is nearby. When you need an upgrade or repair, you'll find facilities all across North America and more than 1,000 dealers ready to assist you.



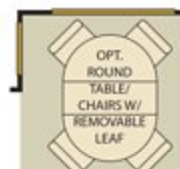
OPT. 635 U-SHAPED SECTIONAL SOFA/DINETTE AND ULTRALEATHER SOFA SLEEPER W/AIR MATTRESS



OPT. 804 ULTRALEATHER SOFA BED



OPT. 821 RECLINER W/TABLE



OPT. 832 FREE-STANDING DINETTE W/REMOVABLE LEAF



OPT. 833 FREE-STANDING DINETTE W/CRENZENZA



OPT. 874 DESK W/FOLD-UP CHAIR



EXCURSION

STANDARD FEATURES

INTERIOR

Throughout

- 10 Gallon Quick Recovery Water Heater w/Direct Spark Ignition (Gas/Electric)
- 20,000/25,000 BTU Dual Furnaces
- 20,000/30,000 BTU Dual Furnaces (Model 39V)
- Complete TuffPEX Plumbing System
- Crown Molding w/Decorative Corner Caps
- Day/Night Pleated Shades
- Deluxe Roller Bearing, Full Extension Drawer Guides & Transit-Ship Locks
- Demand Water Pump w/Filter
- Dual Roof Mounted A/C High Efficiency w/Solar Panel & Chill Grill on Front A/C
- Hardwood Cabinet Doors/Drawers
- Flush Wall-to-Wall Fabrica™ Carpet w/Carpet Pad
- Solid Surface Countertops and Sink Covers
- Vinyl Padded Ceiling
- Wall Switches (Includes Switches for Ceiling Lights & Vents)
- Water Heater Bypass
- Whole Coach Water Filtration System
- Wood Finish Return Air Intake for Furnace

Driver Convenience

- Adjustable 3 Point Seat Belts at Driver & Front Passenger Seats (with adjustable shoulder straps)
- AM/FM/CD Stereo, Sirius Satellite Radio® Ready
- Color Back-Up Monitor
- Auxiliary Start Circuit
- Backlit Switches & Gauges
- Battery Disconnect System
- CB Radio Ready
- Cruise Control
- Driver Side Manual Pull Down Shade
- Driver/Front Passenger Ultraleather™ Captain's Chairs w/Reclining Back/Slide Controls/Power/Heated/Adjustable Arms
- High-Output Auto A/C Heater Combo
- Passenger Armrest w/Integrated Magazine Rack
- Passenger Seat w/Power Footrest & Adjustable Armrest
- Power Driver/Front Passenger Sun Visors
- Radio Switch Main/Auxiliary Power
- Soft Surface Automotive Dash w/Area for Laptop GPS (Laptop & GPS Not Included)
- Tilt/Telescoping Steering Wheel

Galley

- 1.4 cu.ft. Convection Microwave Oven w/Stainless Steel Front
- Norcold® 12 cu.ft. 4 Door Stainless Steel Refrigerator w/Ice Maker and Water Dispenser
- 3 Burner, High-Output Cooktop w/Sealed Burners
- Adjustable Cabinet Shelves (Select Cabinets)
- Fan-Tastic® Power Roof Vent w/Wall Switch
- Laminate Floor Tile
- Large, Double Stainless Steel Sink
- Raised Panel Cabinet Doors
- Single Lever Galley Faucet w/Pullout Sprayer
- Six Person Pull-Out Dinette Table (Select Models)

- Slide-Out Dinette Bins w/Latches
- Soap & Lotion Dispensers
- Solid Surface Countertop, Sink & Range Covers
- Under Galley Shelving & Wastebasket
- Window Over Sink

Living Room

- Samsung® 26" LCD HDTV (40" 40X Model)
- DSS/Stationary Auto Locating Satellite Dish (Covered)
- Samsung® DVD Home Theater Sound System w/Hidden Surround Sound Speakers
- Easy Sweep Laminate Flooring at Entry
- Flexsteel® Residential Seat Styling
- TV Antenna w/Signal Booster
- Ultraleather™ Sofa Bed

Bedroom

- Bedspread w/Decor Pillows
- Cabinet Storage Above the Bed
- Coffin Ceiling
- Mirrored Wardrobe Doors
- Remote Generator Start
- Restonic® Deluxe Pillow Top Innerspring Mattress
- Ventilated Rear Wardrobe w/Cedar Lining, Carpeted Floor & Wire Organizer
- Wardrobe Lighting
- Bedroom Entertainment Center w/Samsung® 19" LCD HDTV and Home Theater (26" on model 39L & 40X)

Bathroom

- Cabinet Toe Kicks
- Coordinated Bath Accessories
- Fan-Tastic® Power Roof Vent w/Wall Switch
- Hardwood Bath Door/Trims
- Laminate Floor Tile
- Lighted Assist Handle
- Molded Shower Enclosure w/Skylight
- Porcelain Toilet w/Water Saver
- Stainless Steel Sink

Safety/Convenience

- Carbon Monoxide Detector/Alarm
- Energy Management System (EMS) w/Soft Start
- Fire Extinguisher
- Propane Detector/Alarm
- Smoke Detector/Alarm
- Multiple Seatbelt Locations

EXTERIOR

Throughout

- 120V/12V AC/DC Converter
- 120V/12V Wire Raceways
- 2000 Watt Pure Sine Wave Inverter w/Remote
- 4 Point Automatic Levelers
- 50 Amp Service
- 8.0 kW Onan® Quiet Diesel Generator
- Awning Rail/Drip Molding (Both Sides)
- Choice of 5 Colorways in 2 Graphic Schemes
- Dual Battery Charge Control
- Dual Pane Windows w/Screens
- Fiberglass Front Quarter Panels
- Fiberglass Front/Rear Caps w/High Mounted Taillights

- Fiberglass Wheel Well Trims
- Full-Body Paint
- Remote/Heated Rear View Mirrors
- Utility Compartment w/Exterior Shower
- Water Pump Switch (Multiple Locations)
- Weather Pro Power Awnings (Patio Awning Includes Wind Sensor)

Automotive

- 10,000 lb. Weight Distributing Hitch Receiver w/7 Pin Electrical Hook-Up†
- 360HP Cummins® ISC 8.3L Engine
- Aluminum Wheels
- Dual Fuel Fill (One on Each Side)
- Fog Lamps
- Freightliner® Chassis
- Large One-Piece Bonded-in Windshield
- Mud Flaps
- Rear Vision Camera
- Single Motor Denso Windshield Wipers w/Wet Arm
- Tire Valve Extenders
- Underhood Utility Light

Safety/Convenience

- 20' Sewer Hose
- Central Electrical Panel
- Doorside Patio Receptacle
- Entry Door w/Screen Door & Deadbolt Lock
- Four 6V/Deep Cycle House Batteries
- Keyless Entry Remote
- Lighted Entry Assist Handle
- Park Cable Receptacle
- Porch Light (Doorside)
- Power Entry Step
- Roof Ladder
- Toilet Tank San-T-Flush™ System
- Touch Sensor Tank Monitoring System
- 4 Wheel ABS Air Brakes
- Automotive Safety Glass
- Daytime Running Lights

Storage

- Continuous One-Piece Compartment Bulb Seal
- EZ Store Compartment on Living Area Slide-Outs
- Gas Lift Strut Supports (Two-Stage Under Slide Box)
- Hidden, Stainless Steel Latch Rods
- Insulated Aluminum Luggage Doors w/Single Paddle Metal Latches & Stainless Steel Hinges
- Lighted Luggage Compartments
- Pass Through Storage
- Side Swinging Luggage Doors (Selected Areas)
- Rotomolded Polyethylene Luggage Compartments
- Spare Tire Compartment (Spare Tire Not Included)

Body Structure

- Aluminum Interlocking Floor/Wall/Ceiling Framing
- Color Coordinated Royal Tuff-Ply Roof
- Heated Water & Holding Tank Compartments
- Royal Tuff-Ply Radius Roof w/Ducted A/C
- Power Platform® Construction (Fleetwood Exclusive)
- Vacu-bond® Upper/Lower Floors

OPTIONS

INTERIOR - Throughout

- Automatic Generator Start System
- Central Vacuum System
- CSA Package (Canadian Specs)**
- Heat Pumps
- Spotlight w/Remote Control
- Washer/Dryer
- Water Heater 16 Gallon Output

Driver Convenience

- Blind Spot/Security Vision Package

Galley

- 14 cu.ft. Dometic® Stainless Steel Frost-Free Refrigerator
- 12 cu.ft. Norcold® 4 Door w/Wood Inserts
- 14 cu.ft. Dometic® Frost-Free Refrigerator w/Wood Inserts
- 3 Burner Range w/Oven
- Free-Standing Dinette w/Credenza
- Free-Standing Table & Chairs
- Laminate Wood Flooring
- Laminate Floor Galley to Entry
- Rip Down 10" LCD TV w/DVD Player

Living Room

- Recliner w/Table (39L & 39V)
- Samsung® 26" LCD HDTV in Front Overhead (40X Only)
- Ultraleather™ Sofa Sleeper w/Air Mattress
- Leather Euro Recliner Free-Standing (Select Models)
- Desk (39L & 39R)

Bedroom

- Adjustable Air Mattress

Bathroom

- Laminate Wood Flooring

EXTERIOR - Throughout

- Entertainment Center w/Samsung® 19" LCD HDTV and Stereo
- Diamond Shield Clear Front Protective Mask
- Exterior Grill and Kitchenette (Select Models)
- Window Awning Package

FLEETWOOD ADVANTAGES

- Full-Wall Slide (Patent Pending)
- 360HP Cummins® ISC 8.3L Engine
- Vacu-bond® Walls w/Smooth High Gloss Exterior Tuff-Coat® Fiberglass
- Power Platform® Construction (Fleetwood Exclusive)
- Large One-Piece Bonded-in Windshield
- Pass Through Storage
- Side Swinging Luggage Doors (Select Doors)
- Samsung® 26" LCD HDTV in Living Room, Samsung® 19" LCD HDTV in Bedroom
- Deluxe Roller Bearing, Full Extension Drawer Guides
- 84" Interior Ceiling Height

** CSA standards may require substitution or deletion to achieve conformance.

WEIGHTS AND MEASUREMENTS

FREIGHTLINER® CHASSIS

MODELS	39L	39R	39S	39V	40E	40X
Engine Displacement (Liters)	8.3	8.3	8.3	8.3	8.3	8.3
Wheelbase (Inches)	252"	252"	252"	252"	276"	276"
GVWR (lbs) ¹	31,000	31,000	31,000	31,000	31,000	31,000
Front GAWR (lbs) ²	12,000	12,000	12,000	12,000	12,000	12,000
Rear GAWR (lbs) ²	19,000	19,000	19,000	19,000	19,000	19,000
GCWR (lbs) ³	41,000	41,000	41,000	41,000	41,000	41,000
Hitch Rating Weight (lbs) ⁴	10,000	10,000	10,000	10,000	10,000	10,000
Tongue Weight (lbs) ⁴	1,000	1,000	1,000	1,000	1,000	1,000
Fuel Capacity (gal)	90	90	90	90	90	90

DIMENSIONS & CAPACITIES

MODELS	39L	39R	39S	39V	40E	40X
Overall Length ⁴	39' 6"	39' 6"	39' 6"	39' 6"	41' 6"	41' 6"
Overall Height (with A/C)	12' 10"	12' 10"	12' 10"	12' 10"	12' 10"	12' 10"
Overall Width (maximum) ^{5,6}	102"	102"	102"	102"	102"	102"
Interior Height (maximum)	84"	84"	84"	84"	84"	84"
Interior Width (maximum)	96"	96"	96"	96"	96"	96"
Fresh Water Holding Tank (gal)	86	86	86	86	86	86
Grey Water Holding Tank (gal)	50	50	50	50	50	50
Black Water Holding Tank (gal)	50	50	50	50	50	50
Appliance Propane Tank (gal) (WC) ⁷	38	38	38	38	38	38
Water Heater Tank (gal)	10	10	10	10	10	10

Liquid Weight Reference: Water (gal) = (8.3 lbs/3.8 kgs) Fuel (gal) = (7.1 lbs/3.2 kgs) Propane (gal) = (4.2 lbs/1.9 kgs)

Metric Conversion: Multiply pounds x 0.453 to obtain kilograms. Multiply gallons x 3.785 to obtain liters. Multiply liters x 61 to obtain cubic inches.

- GVWR (Gross Vehicle Weight Rating) is the maximum permissible weight of this fully loaded motor home. The GVWR is equal to or greater than the sum of the (UVW) unloaded vehicle weight plus the (CCC) cargo carrying capacity.
- GAWR (Gross Axle Weight Rating) is the maximum permissible loaded weight a specific axle is designed to carry.
- GCWR (Gross Combined Weight Rating) is the value specified by the motor home manufacturer as the maximum allowable loaded weight of this motor home with its towed vehicle. Towing and braking capacities may be different. Refer to Fleetwood and chassis manufacturer's manuals for complete information.
- Length measured from front bumper to rear bumper (excludes accessories).
- Excludes safety equipment and awnings.
- Motor homes feature a body-width over 96" which will restrict your access to certain roads. Before purchasing, you should research any state and/or province road laws which may affect your usage.
- Tank manufacturer's listed water capacity (WC). Actual propane capacity is 80% of water listing as required by the safety code.

CHASSIS

Model: Freightliner®
 Engine: Cummins® ISC 8.3L
 Horsepower: 360HP
 Torque: 1050 lbs-ft
 Alternator: 170 Amp Leece Neville®
 Transmission: Allison® 3000MH 6-Speed w/ Electronic Shifter

Warranty



Exclusive RV ownerscare warranty.
 See your Fleetwood dealer for details.

EXCURSION
 CLASS A DIESEL

† The chassis manufacturer recommends the installation of a supplemental brake control system to activate the brakes on the vehicle or trailer you are towing. Hitch receiver ratings expressed are maximum for the hitch receiver installed and may require the purchase of additional equipment that is dependent on the weight of the towed load. Consult with hitch receiver manufacturer for further information.

N/A = Not available at time of printing.

* UVW and CCC are found on the cargo carrying capacity label in each RV.

IMPORTANT— PLEASE READ: Product information, photography and illustrations included in this publication were as accurate as possible at the time of printing. For further product information and changes, please visit our website at www.fleetwoodrv.com or contact your local Fleetwood dealer. Prices, materials, design and specifications are subject to change without notice. All weights, fuel, liquid capacities and dimensions are approximate. Fleetwood has designed its recreational vehicles to provide a variety of uses for its customers. Each vehicle features optimal seating, sleeping, storage and fluid capacities. The user is responsible for selecting the proper combination of loads (i.e. occupants, equipment, fluids, cargo, etc.) to ensure that the vehicle's capacities are not exceeded.

EXCURSION

CLASS A DIESEL

RV OWNERCARE*

Limited one-year/15,000-mile coach warranty and three-year/50,000-mile structural warranty, whichever occurs first, and it is fully transferable for the first 12 months. RV OWNERCARE is one of the RV industry's most comprehensive programs and includes systems, appliances, components and construction, with no deductible and no service charge. RV OWNERCARE coverage is provided from a company that will be around in the future to service your needs. See your nearest Fleetwood dealer for a full explanation of benefits and restrictions.

CONTACT US

To locate a dealer near you, visit our website at www.fleetwoodrv.com or call 1-800-444-4905. We can also be contacted at Fleetwood Customer Relations, P.O. Box 1007, Decatur, IN 46733.

FLEETWOOD TRAVELCADE CLUB

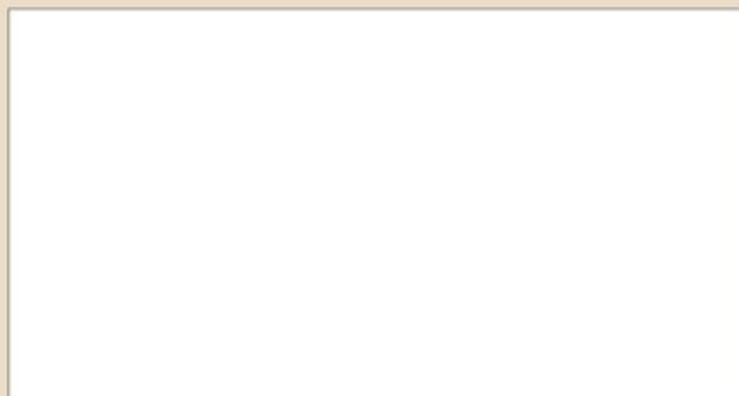
As a Fleetwood owner, you're eligible to become a member of the Fleetwood Travelcade Club. It's a perfect way to meet other Fleetwood owners who love to travel across America and share in the RV lifestyle. Call (877) 577-2560, or visit our website at www.fleetwoodrv.com/owners_clubs to learn more, and join the fun.



treadlightly!
LEAVING A GOOD IMPRESSION



YOUR LOCAL FLEETWOOD DEALER IS



*For complete info see your Fleetwood dealer.

©2007. Fleetwood Enterprises, Inc.

Printed in the USA. Inventory Control Number EXC08B2, 11/07.

Model Year 2008, Second Edition.

IMPORTANT—PLEASE READ

Product information, photography and illustrations included in this publication were as accurate as possible at the time of printing. For further product information and changes, please visit our website at www.fleetwoodrv.com or contact your local Fleetwood dealer. Prices, materials, design and specifications are subject to change without notice. All weights, fuel, liquid capacities and dimensions are approximate. Fleetwood has designed its recreational vehicles to provide a variety of uses for customers. Each vehicle features optimal seating, sleeping, storage and fluid capacities. The user is responsible for selecting the proper combination of loads (i.e. occupants, equipment, fluids, cargo, etc.) to ensure that the vehicle's capacities are not exceeded.

WHY FLEETWOOD?



Quality

There's no cutting corners. Skilled craftsmen build every Fleetwood RV for maximum durability and longevity.



Trust

More people trust Fleetwood. After all, we've spent over 50 years perfecting RVs, earning the loyalty of generations of RVers.



Passion

We're truly passionate about the RV lifestyle. Fleetwood was founded by RV enthusiasts, and that tradition continues today.



Safety

You've got precious cargo. So we've engineered dozens of innovative safety features into our motor homes to give you more peace of mind.



Service

Help is nearby. When you need an upgrade or repair, you'll find facilities all across North America and more than 1,100 dealers ready to assist you.



Warranty

Exclusive RV ownercare warranty. See your Fleetwood dealer for details.



Driven to Explore