

Coachmen
Leader to the Great Outdoors.

CATALINA TRAILBLAZER



CATALINA
TRAILBLAZER

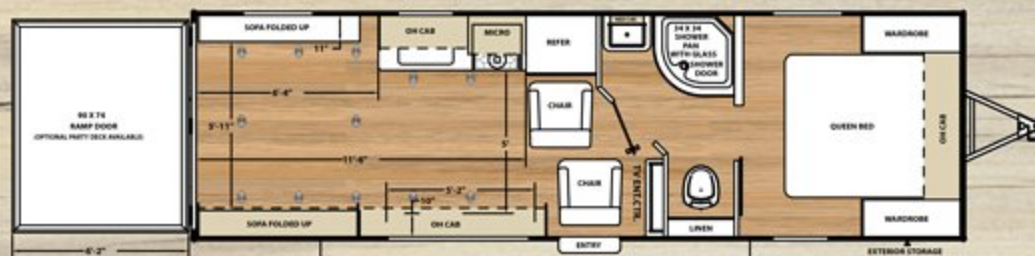
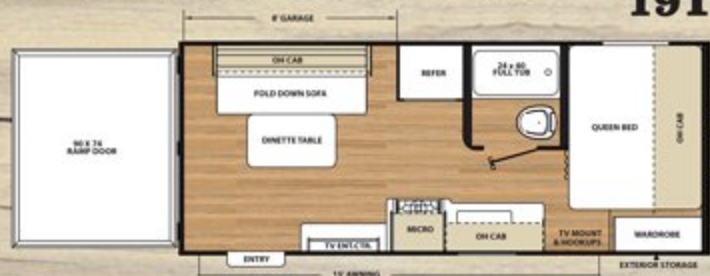

Coachmen
Leader to the Great Outdoors.



TRAIL BLAZER FLOORPLANS

19TH

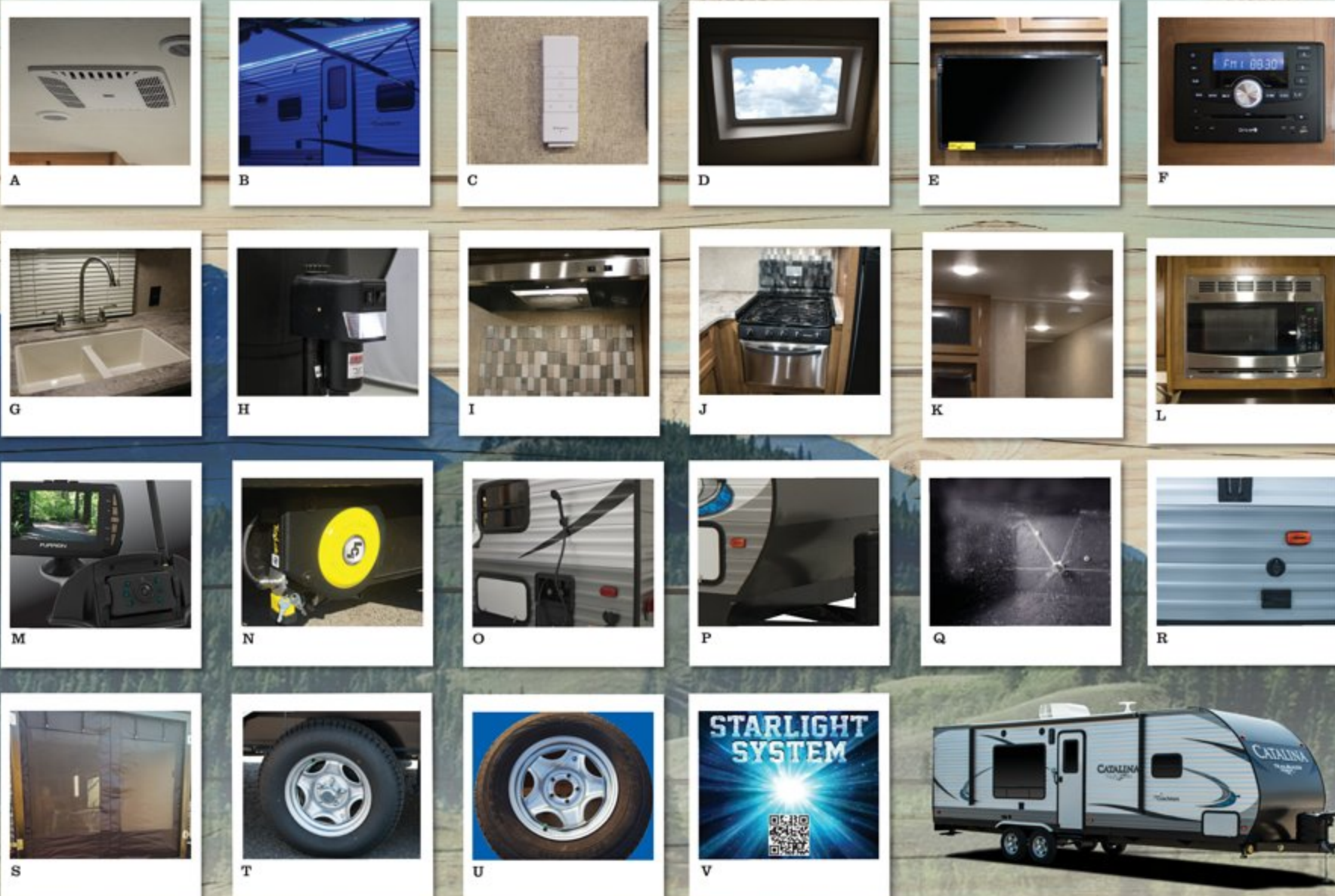
26TH



NEW FLOORPLAN!

MODEL	19TH	26TH
UWV	TBD	5,487
Carrying Capacity	TBD	2,413
GVWR	TBD	7,900
Hitch Weight	TBD	957
Exterior Height (with A/C)	TBD	10'7"
Fresh Water Capacity (gal.)	46	46
Grey Water Capacity (gal.)	40	40
Waste Water Capacity (gal.)	30	30
Awning Length	15'	15'
Wheel Size	TBD	15"
Exterior Length	22'10"	29'10"
Exterior Width	96"	96"
Interior Height (Coach)	81"	81"
Axles	TBD	3500 LBS.

Trail Blazer Package



- A** – 13,500 BTU DUCTED A/C
- B** – POWER AWNING WITH LED LIGHT
- C** – REMOTE FOR POWER AWNING AND LED LIGHT
- D** – SKYLIGHT ABOVE TUB/SHOWER
- E** – 32" FLAT SCREEN LED TV AND SWING ARM BRACKET
- F** – AM/FM RADIO WITH SUBWOOFER, BLUETOOTH, CD /DVD, MP3, SD AND USB
- G** – UNDER MOUNT DUAL BASIN DEEP KITCHEN SINK
- H** – POWER TONGUE JACK
- I** – MOSAIC TILE BACKSPLASH AND STAINLESS STEEL LIGHTED VENT HOOD
- J** – FLUSH MOUNT STAINLESS STEEL 3 BURNER RANGE WITH BI-FOLD GLASS RANGE TOP
- K** – LED INTERIOR LIGHTING
- L** – STAINLESS STEEL DIGITAL MICROWAVE
- M** – REAR VISION CAMERA PREP
- N** – TOY LOK
- O** – EXTERIOR UTILITY SHOWER
- P** – FRONT DIAMOND PLATE ROCK GUARD
- Q** – BLACK TANK FLUSH
- R** – EXTERIOR TV MOUNT WITH 110V OUTLET
- S** – CARGO AREA REAR SCREEN WALL
- T** – SPORT WHEEL PACKAGE (SILVER E-COAT SPORT WHEELS WITH CHROME HUBS AND LUGS)
- U** – SPARE TIRE
- V** – STARLIGHT PACKAGE FEATURING A REMOTE CONTROLLED POWER AWNING AND LED SYSTEM. THE LED SYSTEM INCLUDES AWNING LIGHTS AS WELL AS UNDERBODY LIGHTS TO LIGHT UP THE NIGHT.

FREE TRAIL BLAZER PACKAGE

CATALINA WOULD LIKE TO CELEBRATE THE LAUNCH OF OUR NEW TRAIL BLAZER BY OFFERING OUR CUSTOMERS THE FREE TRAIL BLAZER PACKAGE. ALL OF OUR BEST OPTIONS HAVE BEEN COMBINED INTO THIS FREE PACKAGE. AT COACHMEN CATALINA, WE OVERTLY EXPRESS OUR GRATITUDE TO THOSE WHO HAVE ALREADY BECOME A PART OF THE COACHMEN FAMILY AND WARMLY WELCOME THOSE FUTURE CAMPERS THAT CHOOSE COACHMEN PRODUCTS. THANK YOU FOR YOUR BUSINESS!





COA

COACHMEN OWNERS ASSOCIATION

FREE MEMBERSHIP

www.coachmenowners.com

CUSTOMER SATISFACTION



www.ForestRiverBuyLocal.com



Travel Easy™ Roadside Assistance

RVing is easier with Coachmen's Travel Easy™ Roadside Assistance provided FREE the first year of ownership to those who purchase a New Coachmen RV. Administered by Coach-Net, this service provides you with 24/7 operational, technical and emergency road service coverage. Also included is towing, fuel delivery, jump starts, lockout service, tire changes, mobile mechanic and unlimited technical assistance. Anywhere. Anytime. Travel Easy™ is the security of knowing that help is an easy phone call away.

All information contained in this brochure is believed to be accurate at the time of publication. However, during the model year, it may be necessary to make revisions and Forest River, Inc., reserves the right to make all such changes without notice, including prices, colors, materials, equipment and specifications as well as the addition of new models and the discontinuance of models shown in this brochure. Therefore, please consult with your Forest River, Inc., dealer and confirm the existence of any materials, design or specifications that are material to your purchase decision.

To learn more about Coachmen RV and our products and see how Coachmen is leading the great outdoors, visit www.coachmenrv.com

GVWR (Gross Vehicle Weight Rating) - is the maximum permissible weight of the unit when fully loaded. It includes all weights, inclusive of all fluids, cargo, optional equipment and accessories. For safety and product performance do NOT exceed the GVWR.

GAWR (Gross Axle Weight Rating) - is the maximum permissible weight, including cargo, fluids, optional equipment and accessories that can be safely supported by a combination of all axes.

UVW (Unloaded Vehicle Weight)* - is the typical weight of the unit as manufactured at the factory. It includes all weight at the unit's axle(s) and tongue or pin and LP Gas. The UVW does not include cargo, fresh potable water, additional optional equipment or dealer installed accessories.

*Estimated Average based on standard build optional equipment.

CCC (Cargo Carrying Capacity)** - is the amount of weight available for fresh potable water, cargo, additional optional equipment and accessories. CCC is equal to GVWR minus UVW. Available CCC should accommodate fresh potable water (8.3 lbs per gallon). Before filling the fresh water tank, empty the black and gray tanks to provide for more cargo capacity.

** Estimated average based on standard build optional equipment

Each Forest River RV is weighed at the manufacturing facility prior to shipping. A label identifying the unloaded vehicle weight of the actual unit and the cargo carrying capacity is applied to every Forest River RV prior to leaving our facilities. The load capacity of your unit is designated by weight, not by volume, so you cannot necessarily use all available space when loading your unit.

CATALINA TRAILBLAZER



Learn More
Scan this barcode using a QR Reader on your smart phone to learn more about Forest River.



A Berkshire Hathaway company.



YOUR CATALINA DEALER