

2007

CLASS A GAS
MOTORHOMES

DEDICATED TO QUALITY,
INNOVATION AND
VALUE.

GULF STREAM



COACH, INCORPORATED
FAMILY VALUE

INDEPENDENCE





INDEPENDENCE

ERGONOMIC KITCHEN...

The Independence offers abundant storage and kitchen work space to prepare your family's favorite meals. This unique kitchen features a large refrigerator, 3-burner range, convection microwave and dual basin sink. Corian counters and sink covers provide a durable and spacious food preparation area.



KITCHEN • MODEL 8357



TWO ZONE LIVING • MODEL 8378



BUNK SLIDE • MODEL 8359

SPACIOUS BEDROOM...

Gulf Stream's Two-Zone living concept gives you 30% more room to utilize throughout the day. By adding a sitting area to the bedroom and giving you the ability to shut the bedroom off from the rest of the coach allows you to read a good book, watch TV or work at the computer station.

The Independence offers this unique bunk bed configuration built into the slide room with exterior access and flip up bunk for transporting bikes or other large items.

VALUE...

Gulf Stream believes in adding value to the coach by utilizing residential hardware, durable cloth decor, residential carpet and linoleum, and Gulf Stream's very own Comfort Plus Furniture found only in a Gulf Stream Coach.

The main living area of the Independence also features a flat screen television, large hide-a-bed sofa, and spacious dinette which can be replaced with a free standing dinette table and chairs if you so choose.

BATHROOM...

The wide open concept bathroom with neo-angled shower delivers the extra space needed to get ready for the day ahead.



BATHROOM • MODEL 8357



LIVING • MODEL 8357



MAIN LIVING AREA • MODEL 8295

SPACIOUS LIVING...

The newly redesigned Independence delivers more high end features than any other coach in it's class. Enjoy dining in the Gulf Stream exclusive sun room featuring a free standing dinette table and two chairs. The European style recliner can be moved about to suit your needs.

GULF STREAM





INDEPENDENCE

Seamless FIBERGLASS ROOF

Excellent Weathering -

Maintaining the vehicle's quality appearance enhances its resale value.

Tear Resistance - Flexroofs hard abuse resistant finish resists tearing, a condition that can cause leaks and lead to expensive repair.

Low Maintenance - Road grime can easily be removed with normal cleaning maintenance. Rubber chalking due to solar breakdown of the roof surface is eliminated, preserving the original appearance and resale value of the vehicle.

Stain Resistance - Fiberglass Flexroof is designed to resist staining and maintain its quality appearance.

Structural Integrity - Unlike conventional EPDM rubber roof membranes, Flexroof is a structural component of the roof system.

Textured Fiberglass - Helps dissipate heat and prevents tree limbs from tearing or scratching your roof.

(NA 8314 8333)



Unlike traditional plywood and foam seating Comfort Plus dinette seating features the strength of steel and the comfort of a sprung cushion.

All Comfort Plus furniture by Gulf Stream Coach also features residential styling, solid construction, total comfort and a comprehensive warranty.
(NA 8314 8333)

FLUSH FLOOR Slide out rooms



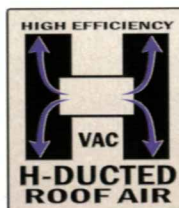
Gulf Stream offers true flush floor slide out rooms to give you more headroom in the slide and eliminates the step up into the slide room that you will experience in many of our competitors motorhomes. (NA 8314 8333)

GALVANIZED STEEL STORAGE COMPARTMENTS



Seamless, carpeted, galvanized steel storage compartments safely cradle your valuables. Rust protective paint and foam sealed for extended life and a quiet ride.

(NA 8314 8333)



Dual metal H-Ducted air conditioning system with foil bubble wrapped insulation for superior climate control.

Cradle of Strength



The Cradle of Strength super strength truss system is unmatched in the RV industry. The structural subfloor foundation begins by welding a network of integrated steel trusses to the chassis rail. Specifically designed to distribute and transfer the tremendous forces from the coach to the chassis rail these trusses are individually tested to withstand 6,000 pounds each.

An all steel overhead structure installed above the cockpit brings strength and rigidity to the upper portion of the coach providing a safe strong platform to install a TV that will not break free in an impact and maximizing overhead storage.



Exterior Options



STANDARD EXTERIOR GRAPHICS



OPTIONAL PAINTED SKIRT



OPTIONAL FULL BODY PAINT

OPTIONAL DIESEL PACKAGE

Enjoy all the benefits of diesel power without going to a rear engine configuration. Built by Freightliner, this chassis features a quiet Cummins 300hp diesel engine, 22.5" tires 55 degree wheel cut, and 60" parabolic leaf spring suspension for a convenient and comfortable ride.

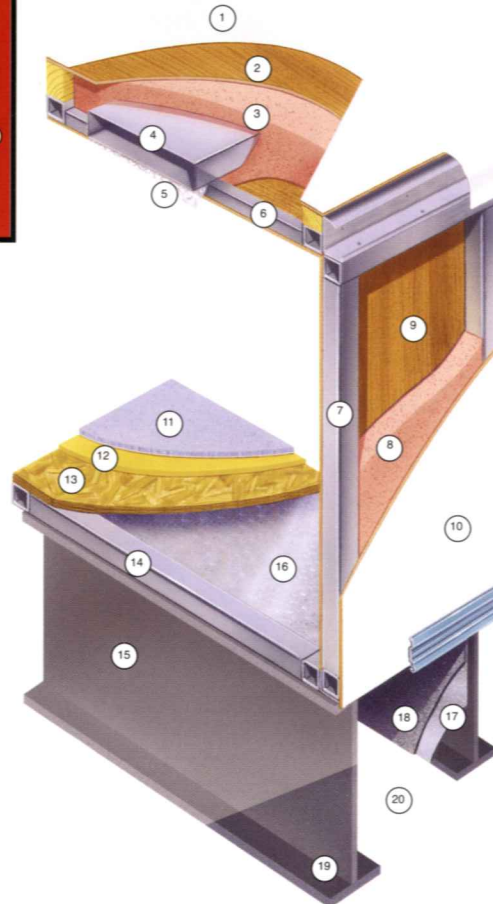
FRONT ENGINE DIESEL

- 26,000 GVWR FREIGHTLINER, 80 Gal. Fuel (368/378)
- 6,000 LB. HITCH
- BOSCH DISC BRAKES W/4-WHEEL ABS
- LOWERED CENTER OF GRAVITY
- LOWERED ENGINE MOUNT
- 80 GALLON FUEL TANK - IMPROVED MPG
- 15,000 MILE OIL CHANGE INTERVAL
- 5-YEAR / 100,000-MILE COOLANT
- 400%-LONGER-LIFE TRANSMISSION FLUID
- READILY IDENTIFIABLE SERVICE POINTS
- 5 SPEED ALLISON TRANSMISSION

(NA 8329 8314 8330 8333)

**12
MPG.***

*actual mileage will vary depending on road conditions and driving habits.



TAKE THE TIME TO COMPARE...

and you will see the exceptional value of a Gulf Stream Coach

1. Seamless TPO (Thermo Plastic Poly-Olefin) Roof For Greater Energy Efficiency and Dependability.
2. Luan Decking for Additional Strength.
3. Molded, High Density EPS (Expanded Polystyrene) Roof Brick Insulation - Provides Consistent Insulation Value as well as Superior Dimensional Rigidity.
4. One-Piece Formed Aluminum Air Conditioning Duct, Completely Surrounded By EPS Insulation.
5. Bubble-Wrapped Foil Insulation Provides Superior Insulation and Helps Prevent Condensation.
6. Rugged Welded Tubular Aluminum Roof Framing.
7. Rugged Heavy-Gauge Tubular Aluminum, Fixture Welded to Form the Sidewall Framing.
8. High-Density EPS Insulation Provides Superior Lamination and Bonding Characteristics and Insures Greater Energy Efficiency.
9. Interior Wall Panels Securely Laminated to Sidewall Framing.
10. "Super Slick" Fiberglass Exterior Vacuum-bond Laminated to Sidewall Framing for Lasting Beauty and Durability NA 8314 8333
11. High-Quality Stain-Resistant Carpeting Available in Designer Coordinated Colors.
12. Extra-Thick Padding Under Carpet Provides Extra Comfort and Increases Carpet Durability.
13. Seamless Structurewood Floor Decking Laminated to Steel Floor Structure Assures a Quiet, Long-Lasting Rigid Floor.
14. Heavy-Gauge Tubular Steel Framing, Fixture Welded for Extra Strength and Stability.
15. Heavy-gauge Steel I-Beam Floor Truss System Provides the Strongest Foundation in the Industry.
16. Seamless Layer of Galvanized Steel Securely Attached to the Steel Floor Framing.
17. Galvanized Steel Used to Form Each Storage & Holding Compartment.
18. Durable All-Weather Carpeting Completes Each Accessible Storage Compartment, Providing Extra Protection for Luggage and Valuables.
19. Rust-Prohibitive Paint Coating Applied to All Steel Framing Assures Corrosion and Rust Protection.
20. The Industry's Strongest, Most Spacious Exterior Storage Compartments.

G.O.L.D. Program

(Gulf Stream Ownership

Lifetime of Dedication)

Gulf Stream is dedicated to our customers and their enjoyment of our products. Our golden promise is to call you within four weeks of the new vehicle purchase date welcoming you to the Gulf Stream family. This call, made by your dedicated customer care person, is to let you know that if you ever need assistance with the operation of components, troubleshooting, or if you ever need to locate an authorized service center, you can rest assured that help is but a phone call away. With the G.O.L.D. Program we'll be there for you for the lifetime of your RV.



Coach-Net®

24 HR. EMERGENCY ROADSIDE ASSISTANCE

- One Year Coach-Net Membership
- Towing and Winching
- Flat Tire Change
- Mobile Mechanic
- Delivery of emergency Fluids
- Jump-Start / Battery Boost
- Lockout

**2 YEAR
UNLIMITED MILEAGE
TRANSFERABLE
WARRANTY**
ON STRUCTURAL COMPONENTS

One year unlimited mileage total use warranty under normal use against defects in material and/or workmanship in construction and original components. *For purposes of this warranty, "Structural components" shall be limited to the structure of the side walls, front and back walls, roof and floor. See the official written Gulf Stream Coach, Inc. Limited Warranty for details.



INDEPENDENCE

Floorplans and Specifications

Holding tank capacities (both fresh water and waste water) are volume calculations based on overall tank dimensions. The capacities may differ from published calculations due to the result of tank installation, tank material variation, tank fitting locations and other plumbing variables.



MODEL 8378

Chassis	Ford
Engine	V-10
Fuel	75
GVWR	22,000
Length	36'-8"
Width	100"
Height w/AC	12'-0"
Interior Height	84"
Wheelbase	242"
Fresh	63 gal.
Grey	50 gal.
Black	50 gal.
LP Gas Tank	85 lbs.
Furnace (BTU's)	40/20k
A/C Front (BTU's)	14,000
Water Heater w/DSI	6 gal.



MODEL 8367

Chassis	Ford
Engine	V-10
Fuel	75
GVWR	22,000
Length	36'-8"
Width	100"
Height w/AC	12'-0"
Interior Height	84"
Wheelbase	242"
Fresh	60 gal.
Grey	40 gal.
Black	40 gal.
LP Gas Tank	85 lbs.
Furnace (BTU's)	40/20k
A/C Front (BTU's)	14,000
Water Heater w/DSI	6 gal.



MODEL 8360

Chassis	Ford
Engine	V-10
Fuel	75
GVWR	22,000
Length	36'-8"
Width	100"
Height w/AC	12'-0"
Interior Height	84"
Wheelbase	228"
Fresh	60 gal.
Grey	40 gal.
Black	40 gal.
LP Gas Tank	85 lbs.
Furnace (BTU's)	40/20k
A/C Front (BTU's)	14,000
Water Heater w/DSI	6 gal.



MODEL 8359

Chassis	Ford
Engine	V-10
Fuel	75
GVWR	22,000
Length	35'-0"
Width	100"
Height w/AC	12'-0"
Interior Height	84"
Wheelbase	228"
Fresh	60 gal.
Grey	40 gal.
Black	40 gal.
LP Gas Tank	85 lbs.
Furnace (BTU's)	40/20k
A/C Front (BTU's)	14,000
Water Heater w/DSI	6 gal.



MODEL 8358

Chassis	Ford
Engine	V-10
Fuel	75
GVWR	22,000
Length	35'-0"
Width	100"
Height w/AC	12'-0"
Interior Height	84"
Wheelbase	228"
Fresh	60 gal.
Grey	40 gal.
Black	40 gal.
LP Gas Tank	85 lbs.
Furnace (BTU's)	40,000
A/C Front (BTU's)	14,000
Water Heater w/DSI	6 gal.



MODEL 8357

Chassis	Ford
Engine	V-10
Fuel	75
GVWR	22,000
Length	35'-0"
Width	100"
Height w/AC	12'-0"
Interior Height	84"
Wheelbase	228"
Fresh	60 gal.
Grey	40 gal.
Black	40 gal.
LP Gas Tank	85 lbs.
Furnace (BTU's)	40/25k
A/C Front (BTU's)	14,000
Water Heater w/DSI	6 gal.



MODEL 8330

Chassis	Ford
Engine	V-10
Fuel	75
GVWR	20,500
Length	33'-0"
Width	100"
Height w/AC	11'-10"
Interior Height	84"
Wheelbase	208"
Fresh	60 gal.
Grey	40 gal.
Black	40 gal.
LP Gas Tank	85 lbs.
Furnace (BTU's)	40,000
A/C Front (BTU's)	13,500
Water Heater w/DSI	6 gal.

Chassis

- 18,000 GVWR FORD W/19.5" TIRES (8314)
- 20,500 GVWR FORD W/19.5" TIRES (8295 8330 8333)
- 22,000 GVWR FORD W/22.5" TIRES (NA 8295 8314 8330)

Power

- 4.0 GENERAC GENERATOR
- (2) AUXILIARY BATTERIES
- BATTERY DISCONNECT
- 30 AMP SERVICE W/AUTO TRANSFER SWITCH & 60 AMP CONVERTER

Décor

- LINOLEUM IN KITCHEN, BATH, HALL & ENTRY
- LAMINATED COUNTERTOPS
- GROVE PARK ASH CABINETRY W/ HARDWOOD DOORS
- PULL SHADES
- METAL MINI BLIND - KITCHEN
- PRIVACY CURTAIN
- CARPETED CEILING LINER (NA 8314 8333)
- PANEL CEILING LINER (8314 8333)
- MIRRORING MEDICINE CABINET
- BRUSHED NICKEL HARDWARE

Heating & Cooling

- DASH A/C
- 13,500 BTU DUCTED ROOF A/C
- 35,000 BTU DUCTED FURNACE (8314 8333)
- (1) 40,000 BTU & (1) 20,000 BTU FURNACE (8357 8359 8360 8367)
- 40,000 BTU DUCTED FURNACE (8295 8330 8358 8378)

Miscellaneous

- CARPETED ENGINE COVER
- CARPETED STORAGE BIN (NA 8314 8333)
- PAINTED STORAGE BIN (8314 8333)
- WHEEL COVERS
- DEAD BOLT LOCK ENTRY DOOR
- ENTRY DOOR ASSIST BAR
- JACK LEVELING SYSTEM PREP
- 5000 LB TRAILER HITCH (NA 8314 8333)
- 3500 LB TRAILER HITCH (8314 8333)
- EXTERIOR SIDE VIEW MIRRORS
- SLIDE OUT TOPPER(S)
- DELUXE VINYL WRAPPED MAIN AWNING

Electrical

- 15" LCD COLOR TV ACROSS FROM BUNKS (8359)
- CABLE TV HOOK UP
- DVD READY
- EMERGENCY START SWITCH IN DASH
- OVERHEAD DEFROST BLOWER
- MAP LIGHTS
- PANCAKE LIGHTS THROUGHOUT
- PORCH LIGHT
- AM/FM/CASSETTE STEREO W/CD PLAYER & SPEAKERS
- ANTENNA W/AMP, BOOSTER & (2) JACKS
- CB ANTENNA
- DSS PREP (TRIPOD)
- 24" FLAT SCREEN COLOR TV IN FRONT OVERHEAD (NA 8360 8367)
- 32" LCD COLOR TV (8360 8367)
- AUTO ELECTRIC STEP
- FLIP DOWN TV TRAY (8330)

Appliances

- SM DOUBLE DOOR 2-WAY REFER
- MONITOR PANEL
- 30" OTR CONVECTION MICROWAVE
- 3-BURNER TOP
- 6-GAL ELECTRIC IGNITION WATER HEATER W/BY-PASS VALVE
- 85# LP GAS BOTTLE (NA 8314 8333)
- 48# LP GAS BOTTLE (8314 8333)
- LP GAS LEAK DETECTOR
- CARBON MONOXIDE DETECTOR

Bath

- SHOWER W/SURROUND & PLEATED DOOR (8314 8330)
- SHOWER W/GLASS DOOR & SURROUND (NA 8314 8330)
- POWER VENT IN COMMODE & SHOWER AREA
- SKYDOME IN BATH

Furnishings

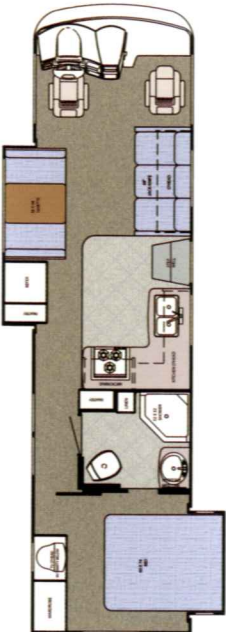
- 60 X 74 BED W/DELUXE INNERSPRING MATTRESS (NA 8358)
- 75 X 80 KING BED W/DELUXE INNERSPRING MATTRESS (8358)
- (2) BUNK BEDS (8359)
- COMFORT PLUS DINETTE BOOTH BED (NA 8295 8314 8333)
- DINETTE BOOTH BED (8314 8333)
- FS ROUND DINETTE W/(2) RESIDENTIAL DINING CHAIRS (8295)
- SOFT TOUCH PILOT SEAT
- SOFT TOUCH CO-PILOT SEAT
- 3-POINT SEAT BELTS
- VANITY BENCH (8295 8357 8358 8359 8378)
- PLEATED PRIVACY DOOR
- (2) BEDROOM CHAIRS W/OTTOMANS (8378)
- SINGLE BARREL CHAIR (PS) (8357 8358 8359 8378)
- CLOTH J-KNIFE SOFA (PS) (8330 8333)
- CLOTH J-KNIFE SOFA (DS)
- DREAM DINETTE RAISE/LOWER SYSTEM (NA 8314 8333)

Exterior/Structural

- "CRADLE OF STRENGTH" CONSTRUCTION:
 - Welded Steel Sub-Floor Truss System
 - 1-1/2" Tubular Metal Cage Construction on Sidewalls & Roof
 - Insulated Floors w/Virtually Seamless Structurewood Decking
 - Vacuum-Bond Laminated 2" Thick Sidewall Construction
- LAMINATED FIBERGLASS ROOF (NA 8314 8333)
- SEAMLESS LAMINATED ROOF (8314 8333)
- SLICK WHITE FIBERGLASS EXTERIOR WALLS (NA 8314 8333)
- SMOOTH WHITE FIBERGLASS EXTERIOR WALLS (8314 8333)
- SINGLE PANE RADIUS WINDOWS
- ALUMINUM SKIN TRUNK DOORS W/SLAM LATCHES (NA 8314 8333)
- RADIUSED BASEMENT DOORS (8314 8333)
- PREMOLDED FRONT & REAR FIBERGLASS CAPS

Popular Options

- DIESEL PACKAGE (NA 8295 8314 8330)
- 22,000 GVWR 300 HP CUMMINS FREIGHTLINER DIESEL
- 7.5 GENERAC DIESEL GENERATOR
- THERMOPANE WINDOWS (NA 8314 8333)
- PAINTED SKIRT (NA 8314 8333)
- FULL PAINT W/PAINTED GRAPHICS (REQUIRES DLX METAL AWNING # 23551) (NA 8314 8333)
- DELUXE METAL WRAPPED MAIN AWNING (REQUIRES FULL PAINT # 23723) (NA 8314 8333)
- SAND & BUFF (NA 8314 8333)
- OUTSIDE SHOWER FLUSH KIT (NA 8314 8333)
- HEATED & REMOTE EXTERIOR MIRRORS (NA 8314 8333)
- HEATED HOLDING TANKS
- REAR LADDER (NA 8330)
- LEVELING JACKS
- LOWRANCE GPS NAVIGATION SYSTEM
- CORIAN KITCHEN COUNTERTOP & MAPLE HARDWOOD INTERIOR (NA 8314 8333)
- 15,000 BTU ROOF AC IPO 13,500 ROOF AC
- BEDROOM 11,000 BTU DUCTED AC (REQUIRES 50 AMP SERVICE)
- 3-SPEED FANTASTIC ATTIC FAN (NA 8314 8333)
- 20" FLAT SCREEN COLOR TV IN BEDROOM (NA 8330)
- COLOR BACK UP MONITOR W/AUDIO
- DVD PLAYER (NA 8314 8333)
- 4.0 ONAN GENERATOR(8314 8333)
- 5.5 ONAN GENERATOR W/50 AMP SERVICE, AUTO TRANSFER SWITCH & 80 AMP CONVERTER (NA 8314 8333)
- 5.5 GENERAC GENERATOR W/50 AMP SERVICE (8314 8333)
- 5.5 GENERAC GENERATOR W/50 AMP SERVICE, AUTO TRANSFER SWITCH & 80 AMP CONVERTER (NA 8314 8333)
- 7.5 ONAN DIESEL GENERATOR REQUIRES DIESEL PACKAGE OPTION
- F/S BUFFET DINETTE W/(2) RESIDENTIAL DINING CHAIRS IPO BOOTH DINETTE (NA 8295 8314 8333 8360 8367)
- COMPUTER DESK, (1) BEDROOM CHAIR IPO (2) BEDROOM CHAIRS (8378)
- (2) FOLDING CHAIRS (NA 8314 8333)
- SOFT TOUCH H-A-B SOFA (DS) (NA 8314 8333)
- H-A-B SOFA (DS)(NA 8314 8333)
- POWER PILOT SEAT (NA 8314 8333)
- EURO RECLINER IPO BARREL CHAIR (PS) (NA 8295 8314 8330 8333)
- SOFT TOUCH EURO RECLINER (PS) (8295)
- LG 2-WAY DOUBLE DOOR REFER
- RAISED REFER PANELS



MODEL 8333

Chassis	Ford
Engine	V-10
Fuel	75
GVWR	20,500
Length	33'-0"
Width	100"
Height w/AC	11'-10"
Interior Height	84"
Wheelbase	208"
Fresh	36 gal.
Grey	40 gal.
Black	40 gal.
LP Gas Tank	48 lbs.
Furnace (BTU's)	35,000
A/C Front (BTU's)	13,500
Water Heater w/DSI	6 gal.



MODEL 8295

Chassis	Ford
Engine	V-10
Fuel	75
GVWR	20,500
Length	30'-8"
Width	100"
Height w/AC	11'-10"
Interior Height	84"
Wheelbase	208"
Fresh	57 gal.
Grey	36 gal.
Black	36 gal.
LP Gas Tank	85 lbs.
Furnace (BTU's)	40,000
A/C Front (BTU's)	13,500
Water Heater w/DSI	6 gal.



MODEL 8314

Chassis	Ford
Engine	V-10
Fuel	75
GVWR	18,000
Length	31'-6"
Width	100"
Height w/AC	11'-10"
Interior Height	84"
Wheelbase	190"
Fresh	55 gal.
Grey	40 gal.
Black	40 gal.
LP Gas Tank	48 lbs.
Furnace (BTU's)	35,000
A/C Front (BTU's)	11,000
Water Heater w/DSI	6 gal.



GULF STREAM



COACH, INCORPORATED
FAMILY VALUE

Gulf Stream Coach

has been a manufacturer of recreational vehicles for over 20 years. Our slogan, "Family Value", speaks to our family-owned company, the value offered in our products and to our customers.

We use advanced manufacturing techniques to build everything from entry-level travel trailers to luxury motorhomes. We offer the largest product line in the industry.

RV dealers and consumers look to Gulf Stream for high-value products offering quality construction, innovative features, contemporary design, unmatched service and on-going support.

We'd love to have you as part of the family

The Gulf Streamers RV Club is a valuable benefit to all Gulf Stream owners. Members enjoy staying active and participating in the various rallies and caravans offered throughout the United States and Canada. Go to www.streamers.gulfstreamcoach.com for more information.



www.GULFSTREAMRV.COM
1-800-765-8787-EXT. 3288

For more information and available options, contact your local Gulf Stream dealer, www.gulfstreamRV.com or Gulf Stream Coach, Inc. Gulf Stream Coach, Inc., reserves the right to make changes in prices, colors, materials, components and specifications and to discontinue models at any time without notice or obligation. Gulf Stream Coach, Inc., assumes no responsibility for any error in type or print reproduction of specifications or floorplans in this brochure. Photographs may show equipment or items that are optional and are not included in the purchase price of the coach. Test drive and review a current model at your nearest Gulf Stream dealer. © 2002 Gulf Stream Coach, Inc., Nappanee, Indiana U.S.A.

2-07-SP-10K Ver 1

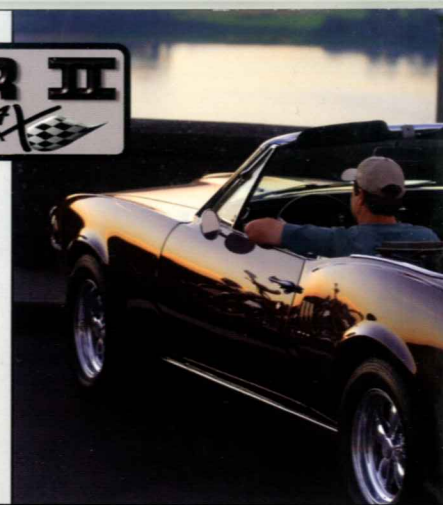
POST OFFICE BOX 1005 NAPPANEE, IN 46550
• YOUR GULF STREAM COACH DEALER •

TRANSPORTER II

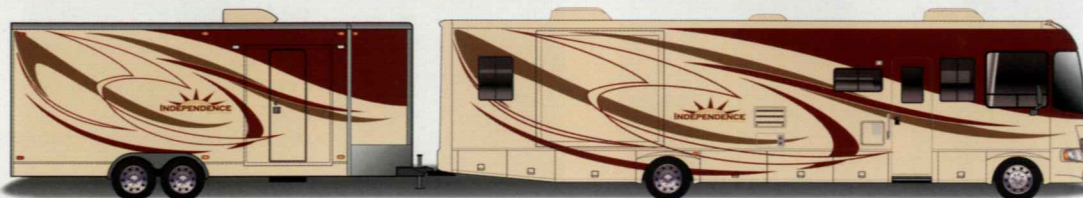
BY ENDURA MAX

FUN DESTINATIONS AWAIT AS YOUR FULLY LAMINATED SPORTS TRANSPORTER TRAILER MOVES AND STORES YOUR PRECIOUS SPORTS EQUIPMENT OR VEHICLE IN A DUST FREE, INSULATED, AND SECURE ENVIRONMENT.

THE LIGHTWEIGHT SANDWICH STYLE CONSTRUCTION PROVIDES SUPERIOR STRENGTH. THE TRANSPORTER II HAS A DAMAGE RESISTANT HIGH QUALITY GEL COATED FIBERGLASS EXTERIOR THAT CONTINUES TO LOOK GREAT AFTER YEARS OF USE.



TRANSPORTER II - SPORTS HAULER



OPTIONAL EQUIPMENT

- FULL BODY PAINT TO MATCH YOUR VEHICLE
- 5,000# ELECTRIC RAMP DOOR
- 98 GALLON HEATED WATER TANK
- 24 GALLON FUEL STATION
- 60 AMP CONVERTER 130 AMP SERVICE
- V-NOSE CABINET PACKAGE
- MICROWAVE
- DOUBLE SIDE-SWING DOOR/RAMP
- BLACK TPO FLOORING
- EXTERIOR FLOOD LIGHT
- ADJUSTABLE D-RING TIE DOWN SYSTEM
- ADDITIONAL OPTIONS AVAILABLE SEE YOUR SALES REP



SPECIFICATIONS

Model	Tires	I-beam	Axles	Base UVW*	Fresh Water Option
12'	15"	8"	7,000#	1,879#	66 gal
18'	15"	8"	7,000#	2,815#	76 gal
24'	15"	8"	10,400#	3,704#	98 gal
30'	16"	10"	14,000#	4,647#	98 gal

*BASE UNLOADED VEHICLE WEIGHT EXCLUDES OPTIONS. NEVER EXCEED GVWR OR AXLE/HITCH RATINGS OF YOUR TOW VEHICLE.

