



Smart design and incredible value make this motor home a Winnebago classic.





32V-Garnet

Great floorplans. Incredible motor home.

Step inside the 2002 Brave and you'll see we've outfitted the Brave to be just what you're looking for: an affordable well-equipped Class A motor home. With an exciting variety of new floorplans to choose from, you can be sure to find one that fits your needs. The 2002 Brave is equipped with a long list of standard features as well as an impressive list of available options.

Storage is abundant, thoughtfully designed and convenient both inside and out. Every Brave is equipped with the StoreMore® slideout system that allows exterior compartments to extend with the front area slideroom for easy access.

Because all Brave models are built with genuine Winnebago Industries unmatched quality, you won't go wrong—whichever one you choose.

Sweet dreams.

It's easy to find them in the Brave's bedroom, thanks to a queen-size walk-around bed complete with a Serta® mattress. The Brave 32V features a large wardrobe with mirrored doors, eight lower drawers, a multi-use desk/vanity area with a folding chair, and a convenient tip-up mirror for even more storage space.



32V-Garnet

Room to roam.

New for 2002, the Brave 32V features both a front dinette/galley slideout and a rear bedroom slideout, making it a spacious, easy-to-live-in coach. Enjoy the comfort of the custom Stitchcraft furniture, including an innovative hoop-based lounge chair that, while you are parked, can be unlatched and repositioned anywhere you choose. Another Brave highlight that you'll really appreciate is the attractive oak cabinets that feature a catalyzed finish typically used in the cabinetry of finer homes.

There is also plenty of lighting placed right where you need it, all controlled via larger, easy-to-operate wall switches. Ceiling-ducted air conditioning delivers efficient cooling and improved airflow through the coach. Use the available heat pump to take the chill off without running the furnace. The available dual-pane, thermo-insulated windows add even more efficiency and are covered with attractive day/night pleated shades.



30W-Silverado

Enjoy the view.

And it's a great one; whether you're watching your favorite program or video on the large 25" TV and available VCR, or just relaxing inside your coach, you are sure to be happy with your choice.

And speaking of choices, with the video selection system you can easily select cable, video or satellite input. There's even an available 300 watt inverter that provides 110-volt power to the TV and VCR when shoreline or generator power is not available. Prewiring for the available satellite system comes standard for added flexibility.

Sit back. Relax.

It's a couch! It's a recliner! It's a bed! It's all three! It's the Rest Easy™ Multi-Position Lounge. At the touch of a button, it goes from a couch to a recliner with pull-out ottoman. Touch the button again and it's a 60" x 75" bed. (Available on 32V, 34D and 36M.)



You have the power.

PowerLine™ helps you manage it. This silent, fully automated energy management system monitors electrical usage and cycles appliances off if demand exceeds available supply and cycles them on again once the power load is reduced. It also allows you to run two roof air conditioners on a 30-amp shoreline circuit without worrying about system overload. (Standard on 32V, 34D and 36M; available on 30W.)



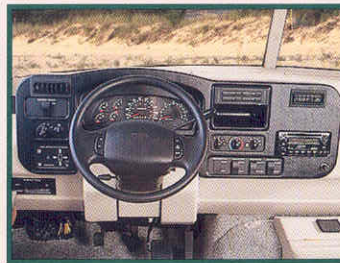
This radio's a wow.

Our engineers worked closely with the radio manufacturer to create the RV Radio designed specifically for RV use. It includes an AM/FM stereo cassette/CD player with a built-in weather band for immediate weather updates at the touch of a button. Its large control knobs and buttons are easy to operate.



Drive in comfort.

Enjoy the scenic view from the cab area in the premium high-back Stitchcraft cab seats available in luxurious leather or cloth. Your comfort is ensured with adjustable arm rests, recline, swivel and slide features.



Smart dash.

One of the first things you'll notice when sitting behind the wheel is that the controls, switches and gauges are all sized and positioned for easy operation. The available rearview monitor system includes one-way audio for safe backing and maneuvering. The dash even flips up for ease of service and quick access.



Write place.

Pull out the available handy passenger side workstation and you're ready to jot in your journal, tap on your laptop or deal out a hand of cards.



Clever.

Brave's new cleverly designed passenger side-trim panel gives you more spaces and places for mugs, maps, tissues and lots of other odds and ends.



Now you're cooking.

Enjoy the full features of the spacious and efficient galley area. Brave comes equipped with a three-burner Magic Chef® range/oven, and a 24" microwave oven with range fan. The new molded sink is not only good to look at, it's stain resistant too. The single-control faucet includes a cold water purification system.



Storage galore.

You'll find a convenient pantry in whichever Brave model you choose. They all feature adjustable shelves for added versatility.



Well-designed bath areas.

With a variety of bath layouts available, you will soon notice the spacious, well thought out features designed with you in mind. Plenty of storage space is key along with standard

features that make you feel more at home, including the Motoraid feature that utilizes engine heat to create a supply of warm water without starting up the water heater. Choose the available 110-volt/LP water heater in place of the standard LP system for added flexibility.



Store more, with StoreMore.

With the StoreMore slideout system, exterior compartments extend along with the slideout, thus making it easier to retrieve stored items. There's plenty of room here for large or oddly shaped items. Storage compartments feature doors with one-piece aluminum exterior panels for superior strength and durability. They also incorporate single paddle latches and gas struts for easy opening.



Everything is A-OK.

Quickly check vital functions at a glance with Brave's conveniently located flush-mounted monitor panel.



The key to it all.

Brave makes use of the KeyOne™ System. Just one double-bitted key, which can be inserted in either direction, opens most doors and storage compartments. What could be simpler?



A good look.

Brave's exterior mirrors come with electric remote control and defrost, standard. They feature a large surface area and a lower convex mirror for increased visibility.

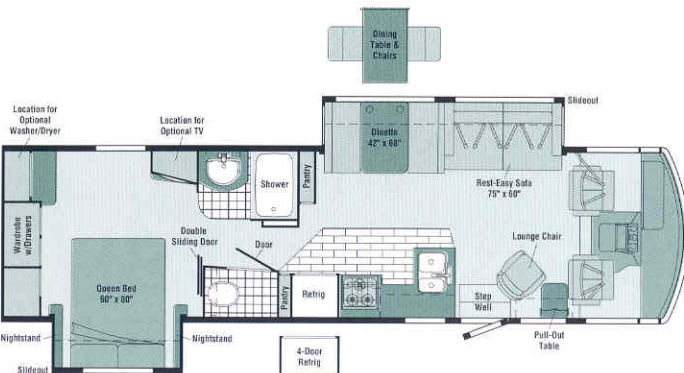
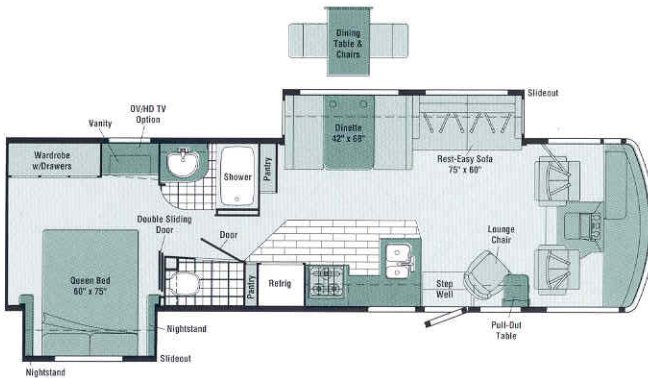


It's great outside.

Brave's one-piece fiberglass sidewalls are amazingly tough—typical for Winnebago Industries' design. Also available: a patio awning for instant shade, stainless steel wheel liners that resist corrosion over the long haul, and hydraulic jacks for added stability when parked.

FLOORPLANS

INTERIORS



30W

- Dinette/galley **STOREMORE** Slideout System
- Private bath with large shower
- Available new hoop-base swivel/glider lounge chair with pull-out table

32V NEW!

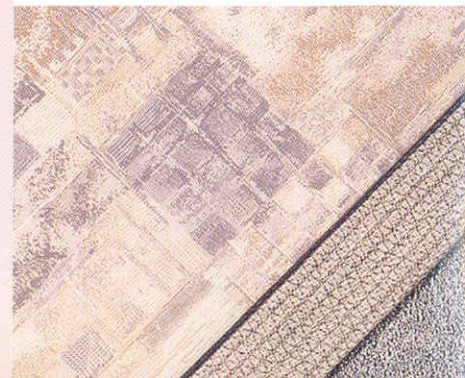
- Dinette/couch **STOREMORE** Slideout System
- Bedroom slideout with large wardrobe and desk/vanity area
- Split bath design with private toilet area
- Dual pull-out pantries
- New hoop-base swivel/glider lounge chair
- **Rest-Easy** Multi-Position Lounge

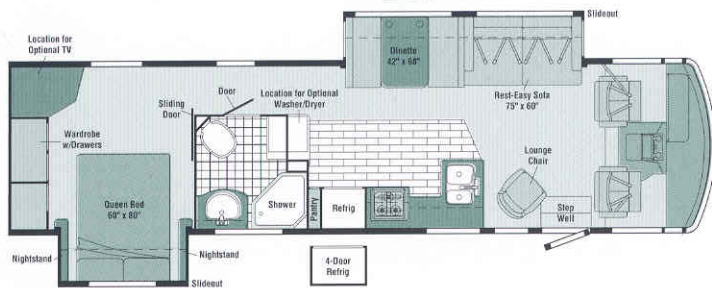
34D NEW!
Available December 2001

- Dinette/couch **STOREMORE** Slideout System
- Bedroom slideout with rear-wall large wardrobe
- Available washer/dryer
- New hoop-base swivel/glider lounge chair
- **Rest-Easy** Multi-Position Lounge



Garnet





Vinyl Floorcovering



Woodgrain Vinyl Plank Floorcovering



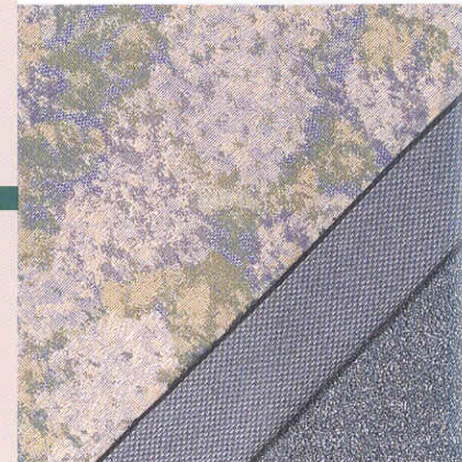
Seat Belts

Note: Dimensions shown are for sleeping space only and dashed lines denote overhead storage areas.

36M NEW! Available October 2001

- Dinette/couch **STORE-MORE** Slideout System
- Bedroom slideout with rear-wall large wardrobe
- Unique side-aisle floorplan
- Large private bath area with space for available washer/dryer
- New hoop-base swivel/glider lounge chair
- **REST-EASY** Multi-Position Lounge

Silverado



Bluestone



Outside convenience.

Conveniently rinse off sand and dirt before heading indoors with the exterior wash station. For ease of access it is located in the water service center along with other frequently used plumbing features.



Bye-bye drips.

We don't overlook even the smallest detail: Brave's innovative built-in rain gutter funnels water away from the entrance door and windows to help keep your coach looking clean and streak free.



Check under the hood?

It's no problem with Brave's extra-large hood opening, which gives you good access for routine maintenance.



Easy in. Easy out.

Getting into and out of Brave is easier and safer, thanks to extra-large, sturdy assist handles both inside and out.



Sound idea.

Brave's available exterior entertainment center includes an AM/FM stereo with antenna, a cassette or CD player, 12-volt DC receptacle, TV jack, 110-volt outlet and speakers. Compartment locks securely.



More power to you.

An Onan® MicroQuiet™ generator supplies 4,000 watts of power to Brave's 110-volt wiring system and comes standard on the 30W model. A 5,500 watt Onan generator is standard on 32V, 34D and 36M; a 7,000 watt Onan Marquis Gold™ is also available on all models.



Portsmouth Oak Woodgrain

SPECIFICATIONS

	30W	32V NEW	34D NEW	36M NEW
Length	30'11"	32'11"	34'11"	35'11"
Exterior Height w/AC [®] - Ford [®] /Workhorse [™]	11'10"/12'	11'11"/11'11"	11'11"/12'2"†	11'11"/12'2"†
Exterior Width ^Δ	8'5.5"	8'5.5"	8'5.5"	8'5.5"
Exterior Storage - Ford/Workhorse (cu. ft.)	72/72	83/76	140/140†	150/150†
Interior Height	6'8"	6'8"	6'8"	6'8"
Interior Width	8'0.5"	8'0.5"	8'0.5"	8'0.5"
Fresh Water Capacity w/Heater* - Ford/Workhorse (gal.)	84/84	86/64	86/86†	76/76†
Holding Tank Capacity - Black/Gray (gal.)	40/54	40/45	50/45†	40/67†
LP Capacity [◇] (gal.)	23	28	28	28
Fuel Capacity - Ford/Workhorse (gal.)	75/75	75/75	75/75	75/75
GCWR - Ford/Workhorse (lbs.)	26,000/21,000	26,000/21,000	26,000/26,000	26,000/26,000
GVWR - Ford/Workhorse (lbs.)	18,000/18,000	20,500/18,000	20,500/20,700	20,500/20,700
GAWR - Front, Ford/Workhorse (lbs.)	7,000/6,000	7,000/6,000	7,000/7,500	7,000/7,500
GAWR - Rear, Ford/Workhorse (lbs.)	11,000/12,000	13,500/12,000	13,500/13,500	13,500/13,500
Wheelbase - Ford/Workhorse	190"/190"	208"/208"	220"/220"	228"/228"

BATH

Cabinet lavatory, Cabinet medicine,	S	S	S	S
Faucet (shower) single control w/fixed shower head,				
Faucet (lavatory) dual-control, Light shower, Lights makeup,				
Shower w/wall surround, Shower Skylight , Sink oval, Tissue Holder ,				
Toilet w/foot-pedal flush, Towel Rack 3-rod, mounted to door, Towel Ring(s)				
Cabinet linen w/adjustable shelves	S			
Magazine Rack	S			
Mirror				S
Shower w/removable clothes rod		S	S	
Shower Door folding		S	S	
Shower Door textured glass	S			S
Wall Border in private toilet area		S	S	

BEDROOM

Bed queen, Serta, innerspring, w/underbed storage,	S	S	S	S
Bedspring pillow shams, throw pillow, Ceiling Molding ,				
Lights decorative wall lamps, Nightstand(s) , Wall Border ,				
Wardrobe Cabinet carpeted floor, clothes rod, drawers, light, mirrored doors				
Mirror backwall		S		
Shirt Closet	S			
Vanity Cabinet w/folding chair		S		S

EXTERIOR

Awning Rails w/rain gutters, Door entrance w/separate screen door, deadbolt lock,	S	S	S	S
Entrance Door Steps double, electric w/doorjamb switch, Ladder ,				
Lights porch light w/interior switch, Mirrors electric remote w/defrost,				
Mudflaps rear, Receptacle AC duplex, Sidewall Skin one-piece smooth fiberglass,				
Storage Compartments valance panels, trunk liner, gas cylinders,				
TriMark KeyOne System, paddle latch, lights*				
Awning* patio	O	O	O	O
Undercoating Workhorse only	O	O	O	O

SYSTEMS

Automotive Heater/Air Conditioner , Auxiliary Start Circuit ,	S	S	S	S
Batteries (Coach) (2) deep cycle, Battery (Coach) disconnect system,				
Battery Charge Control automatic dual, Drain 1" water tank,				
Electrical Distribution System AC & DC breaker panels,				
45-amp converter/charger,				
Generator Prep Kit , Monitor Panel wall-mount, battery condition gauge,				
generator hourmeter gauge, generator start/stop switch, holding tank levels,				
LP tank level, water heater gauge switch & lights, water pump switch, water tank level,				
Powerpoint 12-volt, Roof Vent* nonpowered, galley,				
Roof Vent powered, bath,				
Service Center (Drainage/Water) city water hookup/tank, diverter fill,				
drainage valves, exterior wash station w/pump switch,* sewer hose,				
Service Center (Electrical) cable input, power cord, Sewer Hose 10',				
Tank flushing system, black tank only, Tank holding, heated compartment,				
Tank LP, permanent mount w/gauge,				
Water Heater 6-gallon electronic ignition, LP gas w/Motoraid & auto heater,				
Water Heater Winterization Bypass Valve manual, Water Pump demand,				
Water System Winterizing Valve manual, Water Tank Fill gravity*				
Air Conditioner (Roof) 14,800 BTU	S			
Air Conditioners (Roof) (2)* high efficiency	O	S	S	S
w/ POWERLINE™ Energy Management System				
Furnace 35,000 BTU, low profile	S	S		
Furnace 40,000 BTU, low profile			S	S
Generator* 4,000 watt, Onan MicroQuiet, gas	S			
Generator* 5,500 watt, Onan Marquis Gold, gas	O	S	S	S
Generator 7,000 watt, Onan Marquis Gold, gas	O	O	O	O
Heat Pump(s)*	O	O	O	O
Inverter* DC/AC, 300 watt	O	O	O	O
Roof Vent* nonpowered, bedroom	S			
Roof Vent powered ventilator fan,* galley	O	O	O	O
Solar Panel 10 watt w/battery charger	O	O	O	O
Water Heater 6-gallon electronic ignition, 120 vac/LP gas	O	O	O	O
w/Motoraid & auto heater				
Washer/Dryer Combination		O	O	
Washer/Dryer Prep		S	S	

SLIDEOUT

Slideout Room hydraulic powered, bed	S	S	S
Slideout Room hydraulic powered, couch/dinette w/slideroom cover, STOREMORE	S	S	S
Slideout Room hydraulic powered, dinette/galley, w/slideroom cover, STOREMORE	S		

SAFETY

Assist Bar interior, Assist Handle exterior, Bumpers front & rear,	S	S	S	S
Detectors/Alarms LP leak, smoke, carbon monoxide,				
Fire Extinguisher 10 B.C., Ground Fault Interrupter ,				
Light center high-mount stop lamp, Light courtesy w/wall switch,				
Lights daytime running lamps (Ford),				
Window escape, Windshield laminated safety glass				

WARRANTY

12-month/15,000-mile basic limited warranty , 36-month/36,000-mile warranty on structure ,** 10-year limited parts & labor warranty on roof	S	S	S	S
--	---	---	---	---

AUTOMOTIVE/CHASSIS

Chassis - Ford 6.8L SOHC Triton™ V-10 310 hp, 4-speed overdrive transmission, 4-wheel anti-lock brake system, 130-amp alternator	O	O	S	S
Chassis - Workhorse 8.1L Vortec V-8 340 hp, 4L80E 4-speed overdrive transmission, 4-wheel anti-lock brakes, 145-amp alternator	S	S		
Chassis - Workhorse 8.1L Vortec V-8 340 hp, Allison® LCT 1000 5-speed overdrive transmission, 4-wheel anti-lock brakes, 145-amp alternator			O	O
Leveling Jacks hydraulic - HWH®, manual joystick w/indicator lights, Tire spare , Tire Tool wrench,	S	S	S	S
Trailer Hitch 5000-lb. drawbar/350-lb. maximum vertical tongue weight & wiring, Wheel Liners stainless steel				
Stabilizer Package front shocks (Workhorse only)	O	O		

CAB AREA & DRIVER CONVENIENCES

Cab Seats w/3-point adjustable seat belts, armrests, multi-adjustable swivel/slide/recline, fabric covered,	S	S	S	S
Cigarette Lighter/12-Volt Electrical Supply, Convenience Tray, Cruise Control, Floor Mats carpet driver & passenger,				
Map Light, Steering Wheel tilt w/power assist, Sunvisors (2), Trim Panels driver & passenger sides w/drink holders,				
Window (driver & passenger) full slider w/screen, Windshield Wipers intermittent				
Cab Seats leather seating surface w/manual lumbar support	O	O	O	O
Defroster Fans (2) auxiliary 2-speed w/instrument panel switch	O	O	O	O
Monitor System rearview w/single camera & 1-way audio, Sony®	O	O	O	O
Workstation pull-out, passenger side	O	O	O	O

ENTERTAINMENT

AM/FM (Cab) AM/FM stereo cassette/CD player & weather band, roof-mounted flexible rubber antenna, speakers (4),	S	S	S	S
Radio Power Switch main/auxiliary battery, Satellite System Ready, Telephone input & interior jack, TV 25" Color AC w/remote, video selection system,				
TV Enhancement Package antenna (amplified), 12-volt powerpoint, interior jack(s), coax wiring, cable input, antenna check reminder light, TV shelf				
CB Prep (includes: antenna, antenna lead, 12-volt power supply)	O	O	O	O
Entertainment Center (Exterior) w/Cassette or CD Player DC receptacle, AC duplex receptacle, AM/FM radio, TV jack, radio antenna, speakers (2), lockable compartment	O	O	O	O
Entertainment Center (Exterior) Table* removable	O	O	O	O
Satellite Dish Antenna Winegard®, RV digital, elevation sensing unit	O	O	O	O
TV 19" Color AC w/remote, bedroom	O	O	O	O
VCR w/remote	O	O	O	O

INTERIOR

Ceiling textured fabric, Clock, Cupholder(s), Curtain front wraparound w/track, Lights ceiling, incandescent w/wall switches,	S	S	S	S
Lights fluorescent, recessed, galley & lounge w/wall switches, Lights reading, Picture,				
Shades day/night pleated (lounge, dinette & bedroom), mini blinds (galley)				
Magazine Rack end of galley by lounge chair				S
Mirror		S	S	
Windows dual-glazed/thermo-insulated	O	O	O	O

CABINetry

Woodgrain Portsmouth Oak stile-and-rail construction w/raised panel inserts on upper doors	S	S	S	S
---	---	---	---	---

COUNTERTOPS

Laminate galley & dinette (w/beveled wood edge)	S	S	S	S
--	---	---	---	---

FLOORCOVERING

Carpeting w/pad, Vinyl bath, Vinyl Wood Plank galley	S	S	S	S
---	---	---	---	---

FURNITURE

Couch (Stitchcraft) fabric covered w/throw pillow	S			
Lounge Chair (Stitchcraft) fabric covered, swivel/glider, hoop base				S
Lounge Chair (Stitchcraft) fabric covered, swivel/glider, hoop base, w/cabinet, table & magazine rack	O	S	S	
Dinette w/access to storage below	S	S	S	S
Dining Table w/extendable pull-up leaf & chairs (2) free-standing (2) folding		O	O	O
Rest Easy Multi-Position Lounge (Stitchcraft) fabric covered w/throw pillow	S	S	S	

GALLEY

Faucet single-control, Microwave Oven w/range fan,	S	S	S	S
Range three-burner w/oven, Magic Chef, Range Cover, Refrigerator/Freezer large double-door, Sink double-bowl molded w/sink cover,				
Wall Border, Wastepaper Basket, Water Purification System cold water only				
Coffeemaker	O	O	O	O
Countertop Flip-up Extension		S	S	S
Light decorative		S	S	S
Pantry slideout w/adjustable shelves	S			S
Pantry (2) slideout w/adjustable shelves		S	S	
Range Top three-burner w/storage below, Magic Chef	O	O	O	O
Refrigerator/Freezer* 4-door w/icemaker			O	O

Not all motor homes are created equal.

As you take a closer look, you'll see that there is much more to the Winnebago Brave than a long list of standard features and compelling floorplans. Beneath it all you'll find a SuperStructure™ foundation of strength and durability, and Winnebago Industries' recognized service and warranty support.

We are committed to service.

We back our motor homes with the best after-the-sale service in the industry.

- 12-month/15,000-mile basic limited warranty
- 36-month/36,000-mile warranty on structure
- Standard 10-year limited parts-and-labor roof warranty
- Complimentary 24-hour Roadside Assistance Program
- TripSaver emergency warranty parts shipments
- National Dealer service network



Certified quality.

Recreation Vehicle Dealer Association members annually rate RV manufacturers on the quality of their products, and on their sales and service support. Winnebago Industries has achieved the coveted Quality Circle award every year since its inception, the only major motor home manufacturer to do so.

Learn more about what sets Winnebago Industries apart.

Ask your dealer for this guide. It will help you learn what makes Winnebago Industries motor homes distinctly superior to other brands.

Warning: Joining WIT has been known to cause excessive fun.

Winnebago-Itasca Travelers (WIT) is a club for owners of Winnebago Industries motor homes. WIT is a great way to meet people and offers you:

- Caravans and rallies
- Local and state group activities
- Benefits for RVers

SuperStructure

is the term given to Winnebago Industries' structural motor home design and construction. Rather than a single component, it is the culmination of design integration that incorporates steel and aluminum substructures, composite design laminated floor risers, interlocking joint technology, and Thermo-Panel® floor, roof and sidewalls to form a high-strength, durable vehicle body.

Interlocking joint construction utilizes advanced extruded aluminum structural components to create integrated floor-to-sidewall, and sidewall-to-roof joints. This design effectively distributes the weight of the walls and roof, making a stronger and more durable body than competitor designs that rely on screws to carry the weight.

SUPER STRUCTURE

Laminated risers feature a welded aluminum core for superior strength and provide a stable base for the floor structure and storage compartments.

The foundation substructure assembly is precision-aligned to maximize strength and cross-coach support as well as durability.

Windshields are mounted in steel with non-hardening sealants for superior strength, safety and durability. Some manufacturers actually use a rubber gasket to hold the windshield to a fiberglass cap.

A steel barrier separates occupants from the engine compartment. Believe it or not, less advanced designs actually use wood in this critical application.

Storage compartments attach to outrigger assemblies so the weight of stowed items is carried and disbursed throughout the foundation substructure.

Critical steel components are treated using an advanced electrodeposition coating process that provides superior corrosion protection.

The all steel cab features integral A and B pillars for added strength and stability.

Built to a higher standard.

Brave features a crowned, one-piece fiberglass roof backed with a 10-year limited parts-and-labor warranty. Fiberglass offers superior strength, attractiveness and durability over rubber roofs found on many competitive models. Over time, rubber roofs are susceptible to chalking, streaking and degradation, and have less puncture and tear resistance than fiberglass.



One-year-old competitor's rubber roof



One-year-old Winnebago Industries fiberglass roof

WINNEBAGO Built proudly by
WINNEBAGO
INDUSTRIES

©2001 Winnebago Industries, Inc., Forest City, IA 50436. Printed in USA.

Seat belts are your most important hookup. Always buckle up.
Visit us at www.winnebagoind.com