



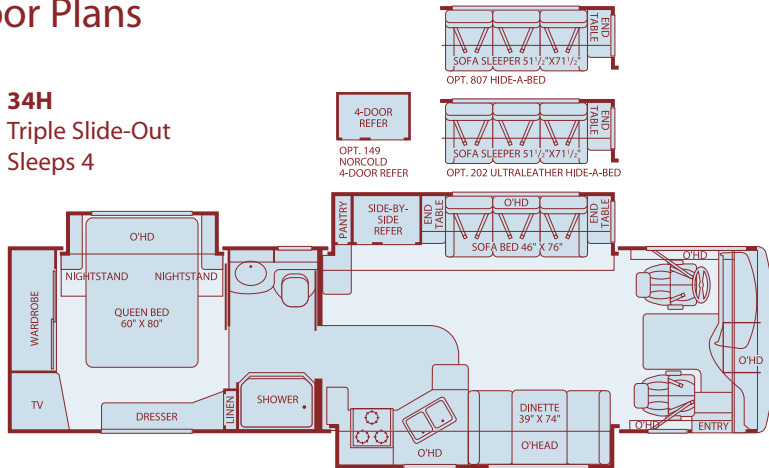
{Bounder Diesel}

BOUNDER DIESEL Class A Diesel 2005

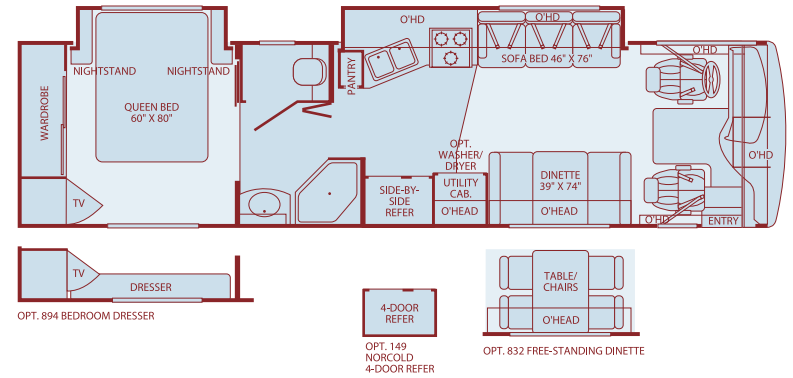


Floor Plans

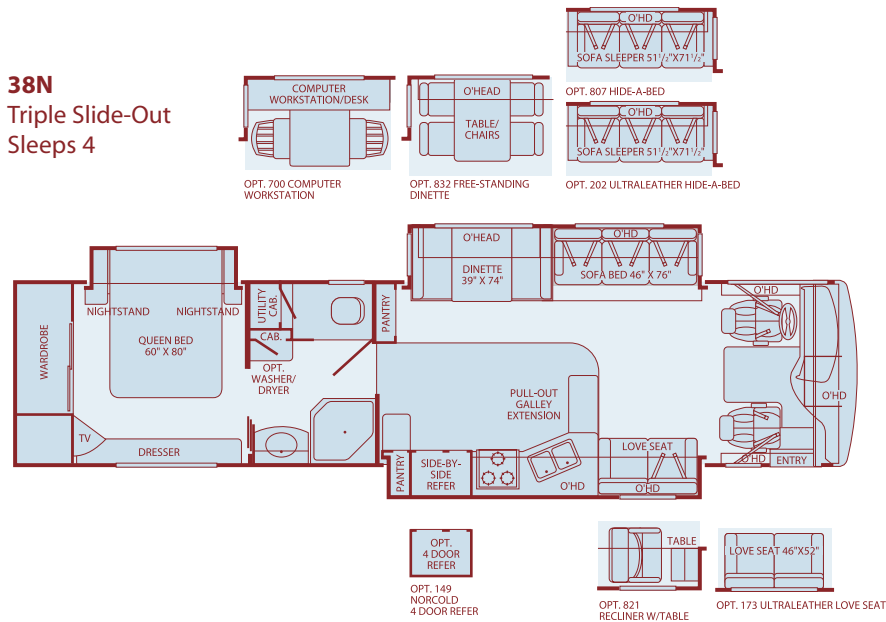
34H
Triple Slide-Out
Sleeps 4



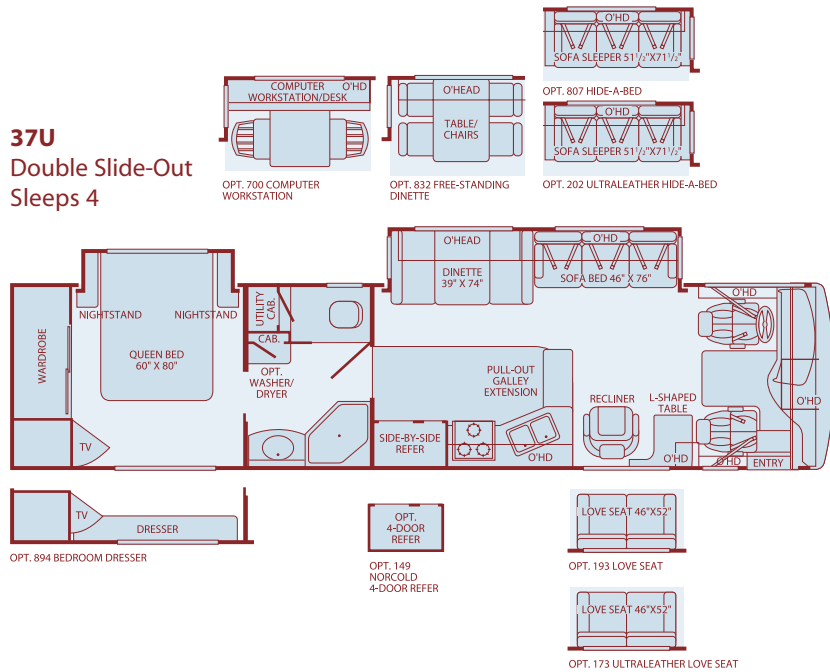
34M
Double Slide-Out
Sleeps 4



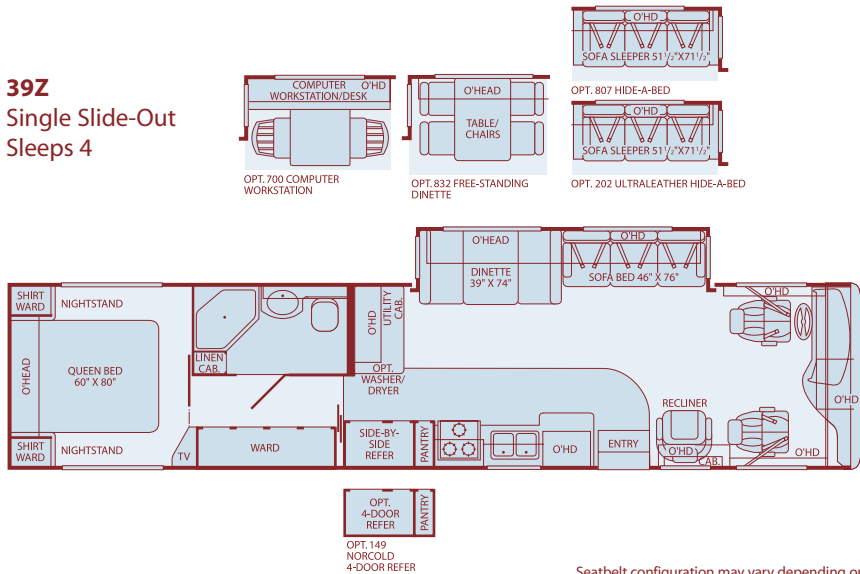
38N
Triple Slide-Out
Sleeps 4



37U Double Slide-Out Sleeps 4



39Z Single Slide-Out Sleeps 4



Seatbelt configuration may vary depending on options chosen. Sleeping capacity based on standard layout. Optional furniture may increase or decrease sleeping capacity.



Inter-locking Ceiling-to-Sidewall Connection

Inter-locking Floor-to-Sidewall Connection

Vacu-Bond® Sidewall Construction

Setting the Standard in Motor Home Quality.

Fleetwood® prototypes are exposed to thousands of miles of durability testing. Those components that don't survive are redesigned until they do. This sets our standard in safety and durability.

Fleetwood's patented Power Platform supports the body with a rigid frame that reinforces the chassis to make it even stronger. This allows Fleetwood to offer triple slide-outs.

For each outer wall, Fleetwood uses one seamless, solid piece of its exclusive Tuff-Coat® fiberglass composite. It resists UV rays, cracks and impacts. Our products look newer longer and that's a big plus at resale time.

To assure a strong, weather-resistant structure, Fleetwood Vacu-bonds® all sidewalls, floors and ceilings to a durable aluminum or steel frame. The Vacu-bond® process is unmatched by many competitors.

Fleetwood sinks and shelves are designed to handle full-size kitchenware. Few competitors can say the same.

Standard Features

Interior

THROUGHOUT

- **Whole-Coach Water Filtration System***
- **Dual Roof-Mounted A/C High Efficiency w/Solar Panel & Chill Grille on Front A/C***
- Wall-Switches (Includes Switches for Ceiling Lights)
- Wood Drawers w/Full-Extension Ball Bearing Slides & Transit-Ship Locks
- Wood-Finish Heat Air-Intake Panel
- Water Heater Bypass System
- 20,000 BTU/25,000 (Dual) Furnace
- Demand Water Pump w/Filter
- 10-Gallon Quick-Recovery Water Heater w/Direct Spark Ignition (Gas/Electric)
- RV System Monitor Panel
- Fire Extinguisher
- Plush Wall-to-Wall Carpet w/Carpet Pad
- Crown Molding
- Solid Surface Countertops (Lavy & Galley)
- Vinyl Floor Covering in Entry
- Woven Jacquard Feature Fabrics

DRIVER CONVENIENCE

- **Soft-Surface Automotive Dash w/Snack Tray & Convenient Service Door***
- **Auto A/C Heater Combo***
- Dash Fans
- Driver/Passenger Ultraleather Captain's Chairs w/Power Driver
- Tilt/Telescoping Steering Wheel
- Cruise Control
- Multi-Function Sun Visor

LIVING ROOM

- **Panasonic® 5-Disc DVD Home Theater Sound System w/Hidden Surround-Sound Speakers***
- Free-Standing Swivel Recliner (37U & 39Z)
- Flexsteel® Residential Seat Styling
- 27" Panasonic® Stereo TV in Overhead Compartment
- Panasonic® Hi-Fi VCR
- Video Switch Box TV/VCR/DVD
- TV Antenna

GALLEY

- **Under Galley Shelving and Wastebasket***
- Window Over Sink
- Cabinet Toe Kicks
- Roll-out Countertop (37U & 38N)
- Soap Dispenser
- 12 cu. ft. Dometic® Refrigerator
- Convection Microwave Oven
- Solid Surface Sink Covers/Cutting Board

BEDROOM

- **Ventilated Rear Wardrobe w/Cedar Lining, Carpeted Floor & Wire Organizer***
- 20" Panasonic® TV
- Telephone Jack
- Rear Speakers

BATHROOM

- **Cabinet Toe Kicks***
- **Lower Step Threshold in Shower***
- Assist Handle
- A/C Venting
- Porcelain Toilet w/Water Saver
- Power Bath Vent
- Vinyl Floor Covering

- Window Coverings
- Radius-Corner Cabinetry
- Large Overhead Cabinets w/Raised-Panel Doors
- Adjustable Cabinet Shelves (Select Cabinets)
- Antique Brass Cabinet Hardware
- Solar Battery Charger
- Ceiling-Ducted Roof A/C
- Smoke Detector/Alarm
- LPG Detector/Alarm
- CO Detector/Alarm

- AM/FM Radio w/CD/Cassette Player
- Radio Switch—Main/Auxiliary Power
- Battery Shut-Off Switch
- 3-Point Front Seat Belts
- Auxiliary Start Circuit

- DSS Manual Lift/Winegard® Satellite Dish
- Telephone Jack
- Beveled Décor Mirrors

- Single-Lever Faucet
- Fan-Tastic® Power Roof Vent
- Vinyl Floor Covering
- Large, Porcelain Double Sink
- 22" 3-Burner, High-Output Cooktop

- Headboard (39Z)
- Innerspring Mattress
- Bedspread w/Décor Pillows

- Make-up Lights
- Skylight in Shower
- Glass Shower Door
- Antique Brass Bath Accessories

Exterior

THROUGHOUT

- **4-point Automatic Hydraulic Levelers***
- **Choice of Three Colorway Graphics***
- **Patio & Entry Door Awning***
- 120V/12V AC/DC Converter w/2000-Watt Inverter
- Aerodynamic Bus Styling
- Full Fiberglass Front & Rear Caps w/High-Mounted Taillights
- Fiberglass Front & Rear Bumpers & Wheel Wells
- Awning Rail/Drip Molding (Both Sides)
- Remote/Heated Exterior Rear-View Mirrors

AUTOMOTIVE

- **300-HP Caterpillar® Engine w/Rear-Mounted Radiator***
- **Freightliner® Chassis***
- **Dual Fuel Fill*** (One on Each Side)
- 10,000-Lb. Weight-Distributing Hitch Receiver
- w/7-Point Electrical Hookup†
- Air Suspension
- Large, Curved Aerodynamic Windshield
- Rear-Vision Camera
- Tire Valve Extenders
- Underhood Utility Light
- Halogen Headlamps
- Denso Windshield Wipers w/Wet Arm

SAFETY/CONVENIENCE

- **Radius Entry Door w/Deadbolt Latch (Keyless-Entry Ready)***
- **Power Entry Step***
- Side-Opening, Engine-Access Door
- Roof Ladder
- Utility Compartment w/Exterior Washdown
- 20' Sewer Hose
- Park Cable Receptacle
- Dual Battery Charge Control

STORAGE

- Spare Tire Compartment (Spare Tire Not Included)
- Continuous One-Piece Bulb Seal
- Hidden Stainless-Steel Latch Rods
- Insulated Luggage Doors w/Stainless-Steel Hinges
- Gas-Lift Strut Supports (Two-Stage Under Slide Box)

BODY STRUCTURE

- **Aluminum Interlocking Floor/Wall/Ceiling Framing***
- Royal Tuff-Ply Radius Roof w/Ducted A/C
- Heated Water & Holding Tank Compartments
- Lighted Polyethylene Luggage-Compartment Boxes

- Dual Pane Windows
- 7.5kW Onan® Quiet Diesel Generator
- 50-Amp Service
- Patio Receptacle
- 120V/12V Wire Raceways
- Water Pump Switch (3 Locations)

- Fog Lamps
- Mud Flaps
- Stainless-Steel Wheel Simulators

† The chassis manufacturer recommends the installation of a supplemental brake-control system to activate the brakes on the vehicle or trailer you are towing.

- Porch Light (Doorside)
- Four 6V/Deep-Cycle House Batteries
- Central Electrical Panel
- Toilet Tank San-T-Flush™ System

- Central Utility Compartment
- Steel Luggage-Door Seal Frames

- Paco® Beam System

Fleetwood Exclusives

- **Strong Power Platform Construction***
- **Energy Management System (EMS) w/Soft Start***
- **Vacu-Bond® Upper/Lower Floors***
- **Vacu-Bond® Walls w/Smooth High-Gloss Exterior Tuff-Coat® Fiberglass***
- **Complete TuffPEX® Plumbing System***

* Denotes Fleetwood's Key Features

Options

THROUGHOUT

- Heat Pumps
- Washer/Dryer
- Semi-Auto-Locating Satellite Dish
- CSA (Canadian Specs) Electrical Package—Freightliner®

GALLEY

- Norcold® 12 cu. ft. Refrigerator
- 22" 3-Burner, High-Output Cooktop Range w/Oven
- Free-Standing Dinette & Chairs

LIVING ROOM

- Ultraleather Sofa
- Fabric Love Seat (37U & Standard on 38N)
- Ultraleather Love Seat (37U & 38N)
- Ultraleather Swivel Recliner (37U & 39Z)
- Sofa Sleeper (37U, 38N & 39Z)
- Recliner w/Table (38N)

DRIVER CONVENIENCE

- Stereo AM/FM w/6-Disc CD Player with Sirius® Satellite Radio (w/One-Year Subscription)
- Ultraleather Driver & Passenger Seats, Power Driver Seat, Power Passenger Seat w/Power Foot Rest
- Power Sun Visors

AUTOMOTIVE

- Front Protective Mask
- Remote Keyless Entry Door
- Electric Awning

Weights and Measurements

FREIGHTLINER® CHASSIS	34H	34M	37U	38N	39Z
Engine Displacement (Liters)	7.2	7.2	7.2	7.2	7.2
Wheelbase (Inches)	208	208	242	252	252
GVWR (lbs.)¹	28,000	28,000	28,000	28,000	28,000
Front GAWR (lbs.)²	10,500	10,500	10,500	10,500	10,500
Rear GAWR (lbs.)²	17,500	17,500	17,500	17,500	17,500
Base Weight (lbs.)³	20,450	20,050	21,555	21,724	20,775
GCWR (lbs.)⁴	38,000	38,000	38,000	38,000	38,000
Hitch Rating Weight (lbs.)[*]	10,000	10,000	10,000	10,000	10,000
Tongue Weight (lbs.)[*]	1,000	1,000	1,000	1,000	1,000
Fuel Capacity (gal.)	90	90	90	90	90

DIMENSIONS AND CAPACITIES

Overall Length⁵	34' 8"	34' 8"	37' 6"	38' 4"	39' 0"
Overall Height (with A/C)	12' 1"	12' 1"	12' 1"	12' 1"	12' 1"
Overall Width (maximum)⁶	102"	102"	102"	102"	102"
Interior Height (maximum)	79"	79"	79"	79"	79"
Interior Width (maximum)	96"	96"	96"	96"	96"
Fresh Water Holding Tank (gal.)	86	86	86	86	86
Grey Water Holding Tank (gal.)	50	50	50	50	50
Black Water Holding Tank (gal.)	50	50	50	50	50
Appliance LP Gas Tank (gal.) (WC)⁷	25	25	25	25	25
Water Heater Tank (gal.)	10	10	10	10	10

Liquid Weight Reference: Water (gal.) = (8.3 lbs./3.8 kgs.) Fuel (gal.) = (7.1 lbs./3.2 kgs.) LPG (gal.) = (4.2 lbs./1.9 kgs.)

Metric Conversion: Multiply pounds x 0.453 to obtain kilograms. Multiply gallons x 3.785 to obtain liters.

CHASSIS

Frame: Freightliner® XC-Series	Transmission: Allison® 3000 MH, 6-Speed w/Electronic Shifter
Engine: Cat® C7 300 HP	Alternator Amps: 160-Amp Delco
Torque: 860 lb.-ft. @ 1440 RPM	Tires: Goodyear® 275/70R 22.5H

- GVWR (Gross Vehicle Weight Rating): Maximum permissible loaded weight of the motor home. The GVWR is equal to or greater than the sum of the unloaded vehicle weight plus the net carrying capacity.
- GAWR (Gross Axle Weight Rating): Maximum permissible loaded weight a specific axle is designed to carry.
- Base Weight: Estimated weight of the motor home without fuel, options, water, cargo or passengers.
- GCWR (Gross Combined Weight Rating): Value specified by the motor home manufacturer as the maximum allowable loaded weight of this motor home with its towed vehicle. Towing and braking capacities may differ. Refer to Fleetwood and chassis manufacturer manuals for complete information.
- Length taken from front bumper to rear bumper (excludes accessories).
- Excludes safety equipment and awnings.
- Tank manufacturer's listed water capacity (WC). Actual LPG capacity is 80% of water listing as required by the safety code.

* The chassis manufacturer recommends the installation of a supplemental brake-control system to activate the brakes on the vehicle or trailer you are towing.

IMPORTANT— PLEASE READ: Product information, photography and illustrations included in this publication were as accurate as possible at the time of printing. For further product information and changes, please visit our website at www.fleetwoodrv.com or contact your local Fleetwood dealer. Prices, materials, design and specifications are subject to change without notice. All weights, fuel, liquid capacities and dimensions are approximate. Fleetwood has designed its recreational vehicles to provide a variety of uses for customers. Each vehicle features optimal seating, sleeping, storage and fluid capacities. The user is responsible for selecting the proper combination of loads (i.e. occupants, equipment, fluids, cargo, etc.) to ensure that the vehicle's capacities are not exceeded.

What Drives You?

Maybe it's feeling like you're the only one on Earth. Perhaps it's the unique sense of closeness with the great outdoors. Or, it might be the joy that comes from spending quality time with family and friends. Whatever the reason, we know that you have a strong drive to experience everything that comes with spending time on the road. And for more than 50 years, we've shared that passion with you. Because we're RV enthusiasts ourselves, you can see our passion in the vehicles we design and build. Own a Fleetwood, and you'll feel like you're not just traveling, but embarking on an experience unlike any other. Set your own course for adventure and get out there and explore the world around you. Once you do, you'll see what it is that drives us — it's you.

RV OWNERCARE* is a limited one-year/15,000-mile and three-year/50,000-mile structural warranty, whichever occurs first, and it is fully transferable for the first 12 months. RV OWNERCARE is one of the RV industry's most comprehensive programs and includes systems, appliances, components and construction, with no deductible and no service charge. RV OWNERCARE coverage is provided from a company that will be around in the future to service your needs. See your nearest Fleetwood dealer for a full explanation of benefits and restrictions.

CLUB FLEETWOOD As a Fleetwood owner, you're eligible to become a member of our owners' group, Club Fleetwood. It's a perfect way to meet other Fleetwood owners who love to travel to beautiful resorts and vacation spots all across America. Call (877) 577-2560 and join the fun! Or visit www.fleetwood.com/clubs to learn more. For Bounder Diesel specific club information contact: Bounders of America (860) 643-0877, www.bounder.org or Bounders United www.bounder.net.

FLEETWOODRV.COM To locate a dealer near you, visit our website or call 1-800-444-4905. We can also be contacted at Fleetwood Customer Relations, P.O. Box 7638, Riverside, CA 92513-7638.



www.fleetwoodrv.com

*For complete info see your Fleetwood dealer. © 2004, Fleetwood Enterprises, Inc. Printed in the USA. Inventory control number BDRD05F2 10/04.

IMPORTANT—PLEASE READ Product information, photography and illustrations included in this publication were as accurate as possible at the time of printing. For further product information and changes, please visit our website at www.fleetwoodrv.com or contact your local Fleetwood dealer. Prices, materials, design and specifications are subject to change without notice. All weights, fuel, liquid capacities and dimensions are approximate. Fleetwood has designed its recreational vehicles to provide a variety of uses for customers. Each vehicle features optimal seating, sleeping, storage and fluid capacities. The user is responsible for selecting the proper combination of loads (i.e. occupants, equipment, fluids, cargo, etc.) to ensure that the vehicle's capacities are not exceeded.

Your local Fleetwood dealer is:

