

2010 *Four Winds*

BY FOUR WINDS INTERNATIONAL





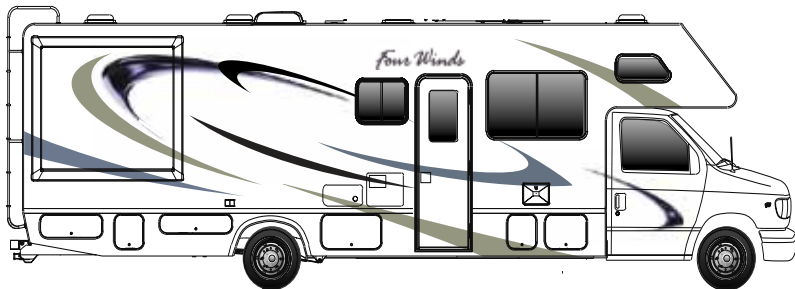
CABINETY

Standard Cinnamon
Maple Cabinetry



Optional Cherry
Cabinetry

EXTERIOR DECOR

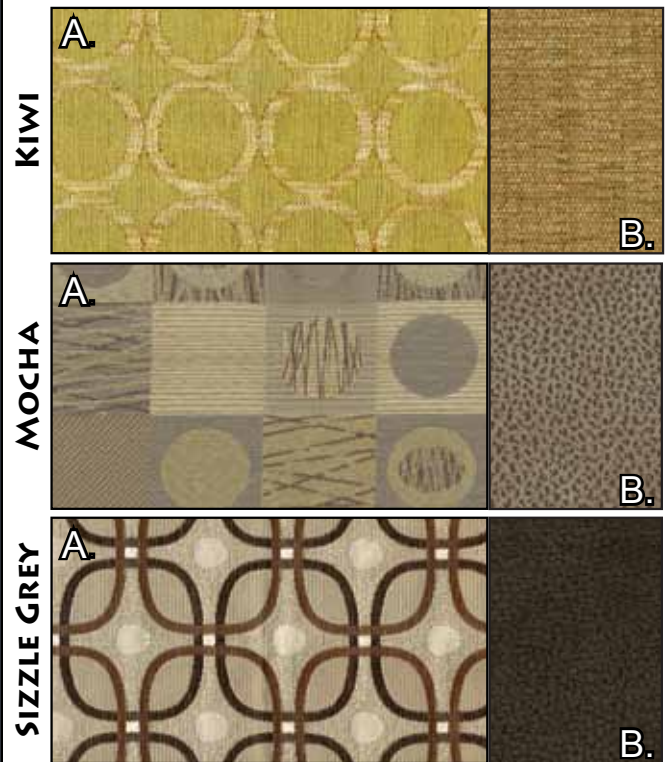


STANDARD EXTERIOR GRAPHICS



OPTIONAL SILVER BENZ PARTIAL PAINT

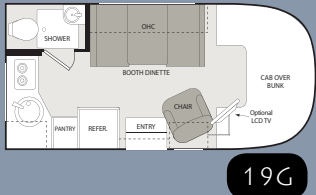
INTERIOR DECOR



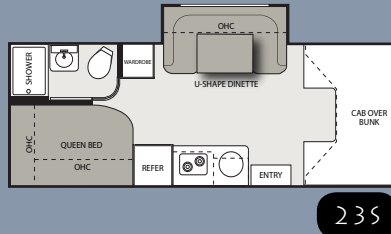
A. MAIN PRINT B. ACCENT FABRIC

FLOORPLANS

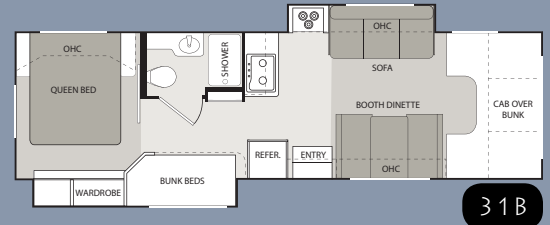
INDICATES MEGA STORAGE



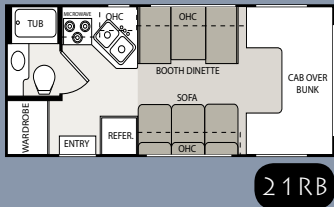
19G



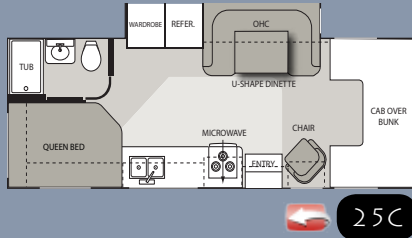
23S



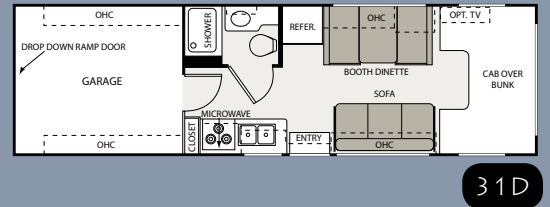
31B



21RB



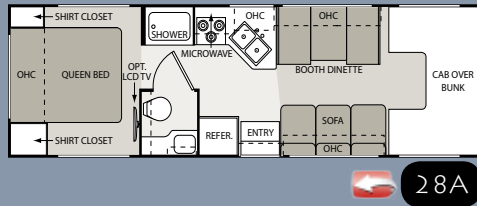
25C



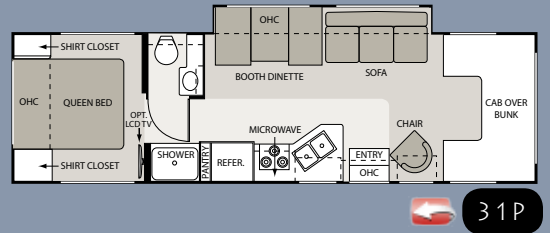
31D



23A



28A



31P

SPECIFICATIONS

	Model	19G	21RB	23A	23S	25C	28A	31B	31D	31P
WEIGHT RATING (LBS)	Ford Chassis with Triton engine	5.4L/V-8	5.4L/V-8	6.8L/V-10	N/A	6.8L/V-10	6.8L/V-10	6.8L/V-10	6.8L/V-10	6.8L/V-10
	Gross Vehicle (GVWR)	9,600	11,500	12,500	N/A	14,500	12,500	14,500	14,500	14,500
	Gross Combined (GCWR)	13,000	13,000	18,500	N/A	20,000	18,500	20,000	20,000	20,000
	Chevy Chassis with 6.0L Vortec engine	N/A	V-8	V-8	N/A	V-8	V-8	V-8	V-8	V-8
	Gross Vehicle (GVWR)	N/A	12,300	12,300	N/A	14,200	12,300	14,200	14,200	14,200
	Gross Combined (GCWR)	N/A	16,000	16,000	N/A	17,600	16,000	17,600	17,600	17,600
	Sprinter Chassis with 3.0L diesel engine	N/A	N/A	N/A	V-6	N/A	N/A	N/A	N/A	N/A
	Gross Vehicle (GVWR)	N/A	N/A	N/A	11,030	N/A	N/A	N/A	N/A	N/A
	Gross Combined (GCWR)	N/A	N/A	N/A	14,530	N/A	N/A	N/A	N/A	N/A
MEASUREMENTS	Wheel Base (Ford/Chevy) (in Inches)	138	138/139	158/159	170"	189/190	190/191	223"/224"	211"/212"	219/220
	Exterior Length (without ladder)	19'10"	22'8"	24'10"	24'10"	27'4"	29'9"	32'2"	31'1"	32'3"
	Exterior Height (with air conditioning)	10'3"	10'10"	10'10"	11'	10'10"	10'10"	11'5"	11'1"	10'10"
	Exterior Width (without mirrors)	91"	99"	99"	90"	99"	99"	99"	99"	99"
	Interior Height	80"	82"	82"	80"	82"	82"	82"	80"	82"
	Awning Size (manual/electric)	8'/-	12'/12'	15'6'/-	15'/15'	18'/18"	14'/14'	10'6"/10'6"	20'/20'	16'/16'
CAPACITIES	Fuel - Ford/Chevy (gallons)	40/-	37/35	55/57	26.4	55/57	55/57	55/57	55/57	55/57
	LPG (pounds)	40.9	40.9	40.9	68.2	40.9	40.9	40.9	40.9	40.9
	Fresh Water (gallons)	20.5	21	40	40	40	40	40	23	40
	Waste Water (gallons)	17	25	24.5	38	24.5	25	32	32	31
	Gray Water (gallons)	17	22	38.5	34	38.5	22	36	36	29
	Water Heater (gallons)	6	6	6	6	6	6	6	6	6
	Furnace (BTUs)	16,000	25,000	25,000	25,000	30,000	30,000	30,000	25,000	30,000
	Exterior Storage Capacity (cubic feet)	6.5	6	69	65	69	111	47	17	101

2010 FOUR WINDS CLASS C STANDARD & OPTIONAL FEATURES:

BODY CONSTRUCTION/EXTERIOR		WHEEL LINERS (N/A on 19G)		Decorative raised wood refrigerator panels		China bowl toilet (N/A on 19G)	
Fully welded tubular aluminum roof and sidewall cage construction	S	Upgrade dash insert (Ford & Chevy)	O	2-burner cooktop (19G & 23S only)	S	Skylight in shower	S
Vacu-Bond laminated roof, walls and floors with high-density block foam insulation	S	Infiniss™ Leather driver and passenger captain's chairs	O	3-burner high-output gas range top (N/A on 19G & 23S)	S	Shower with pleated shower curtain (19G only)	S
Slick fiberglass exterior	S	Power driver seat (Ford chassis only)	O	Microwave oven	S	Shower with glass door (N/A on 19G)	O
Exterior graphics package	S	Back-up monitor (Std. 31B)	O	3-burner high-output gas range top with oven (N/A on 19G & 23S)	O	SAFETY & CONVENIENCE	
Exterior graphics/partial paint package	O	INTERIOR		Convection microwave	O	Entry door with deadbolt lock	S
Exterior rear Mega Storage compartment (23A, 25C, 28A & 31P only)	S	Residential linoleum (galley, bath and entry way)	S	Laminate countertops	S	Telephone jack	S
Rear Garage with cargo ramp (31D only)	S	Linoleum throughout the coach (19G & 23S only)	S	Large single bowl sink (19G & 23S only)	S	Smoke, LPG, carbon monoxide detector and fire extinguisher	S
Seamless roto-cast storage compartments	S	Metal entry grab handle	S	Large double bowl sink	S	Passenger seat belts in select areas	S
Flush mount radius luggage doors	S	Windshield privacy curtain	S	Flip-up countertop extension (23A, 23S, 31B & 31P only)	S	Child safety seat tether anchor in booth dinette (N/A in 19G, 23S & 25C)	O
Premium one-piece TPO roof (Energy Star approved)	S	13,500 BTU roof air conditioner in front	S	Full extension metal drawer guides	S	Slide-out battery tray (N/A 23S)	S
Manual patio awning	S	15,000 BTU roof air conditioner in front (N/A on 19G & 23S)	O	ENTERTAINMENT & ACCESSORIES		Convenience Package: includes keyless entry and valve stem extenders (N/A on 19G & 23S)	O
Electric patio awning (N/A on 19G & 31B)	O	Ceiling ducted air conditioning system (N/A on 19G & 23S)	S	19" LCD television (19G only)	O	ELECTRICAL & PLUMBING	
Slide-out room awning	S	Cinnamon Maple cabinetry	S	26" television in front overhead with electric swivel in cab-over (N/A on 19G)	O	Onan® Microquiet™ 4.0 gas generator (4000-watt)(N/A 23S)	S
Roof ladder	S	Cherry cabinetry	O	Entertainment center with 26" LCD television and slide-out bunk (no sliding bunk on 23S)(N/A on 19G, 31B and 31D)	O	Onan® 3.6 LP generator (3600-watt) (23S only)	O
Drop-down stairwell entrance step (N/A on 21RB & 23S)	S	European styled curved cabinet doors (19G only)	S	Entertainment center with 32" LCD television and slide-out bunk (31B only)	O	Onan® 3.2KW diesel generator (3200-watts)(23S only)	O
Manual entrance step (21RB & 31B only)	S	Raised panel upper cabinet doors	S	Home theater system with DVD player and radio tuner (N/A on 23S)	O	30-amp service with shoreline power cord and battery disconnect switch	S
Automatic electric entrance step (21RB & 31B only)(Std. on 23S)	O	Hardware with Brushed Nickel finish	S	19" LCD television in bedroom (N/A on 19G, 21RB, 23A and 25C)	O	Automatic generator transfer switch	O
Outside shower	O	Day/night shades throughout	S	19" LCD television in the garage (31D only)	O	Emergency start switch (N/A 23S)	S
Rear Cargo Screen (31D only)	O	Barrel chair (19G, 23A, 25C and 31P only)	S	Dual LCD monitors with DVD and gaming inputs located in the bunk bed overheads (31B only)	O	Second auxiliary house battery (N/A 19G)	O
Rear exterior spotlights (31D only)	O	Leatherette euro recliner with ottoman in place of barrel chair (23A, 25C and 31P)	O	Outside entertainment center includes a 26" LCD television, AM/FM stereo, CD/DVD player, iPod ready jack and speakers (31P only)	O	6-gallon DSI gas water heater	S
AUTOMOTIVE/COCKPIT		Fabric jackknife sofa (N/A on 19G, 23A, 23S and 25C)	S	Home theater system with DVD player and radio tuner (N/A on 23S)	O	6-gallon DSI gas/electric water heater	O
3,500-lb. trailer hitch (19G & 23S only)	S	Infiniss™ Leather jackknife sofa (N/A on 19G, 23A, 23S and 25C)	O	Coach radio system (23S only)	O	Water heater bypass system	S
5,000-lb. trailer hitch (N/A 19G & 23S)	S	Infiniss™ Leather hide-a-bed sofa with air mattress (31P on a Ford chassis only)	O	Television antenna and booster	S	Heated and enclosed holding tanks (31B only)	S
AM/FM dash radio with large buttons, CD player and weather band tuner	S	Booth dinette (N/A on 23S & 25C)	S	BEDROOM/BATHROOM		Holding tanks with heat pads (N/A on 31B)	O
3-point seat belts for driver and passenger	S	Fabric U-shaped dinette (23S & 25C only)	S	Queen-size bed with innerspring mattress (N/A on 19G & 21RB)	S		
Power window and door locks	S	Infiniss™ Leather U-shaped dinette (23S & 25C only)	O	Bunk beds in hallway slide room (31B)	S		
Deluxe exterior mirrors (N/A on 23S)	S	Fantastic® fan in kitchen area	O	Bedspread and pillow shams (N/A on 19G & 21RB)	S		
Deluxe heated remote mirrors (N/A on 19G)(Std. on 23S)	O	Fantastic® fan in overhead bunk (N/A on 19G & 23S)	O				
Aluminum running boards (N/A on 23S)	S	GALLEY					
Spare tire (N/A 19G)	S	Single door refrigerator (19G only)	S				
Aluminum wheels (19G only)	S	Double door refrigerator (N/A on 19G)	S				



VEHICLE LOADING: Every effort has been made to provide the greatest number of options for the recreation vehicle owner. Along with these choices comes the responsibility to manage the loads that are imposed by the choices so that they remain within the manufacturer's specified chassis weight limits. Do not overload the recreation vehicle.

IMPORTANT: Towing capacity may vary by chassis model, floorplan, options and loading of the vehicle. This may result in a towing capacity which is less than the maximum capacity of the hitch. Do not exceed the vehicle's Gross Combined Weight Rating (GCWR), or

the hitch rating. A separate functioning brake system is required for any towed vehicle or trailer weighing more than 1,000 lbs. (450 KG) when fully loaded. Liquid capacities and weights are approximations only.

WARNING: This information is intended as a guide only. Weights of individual vehicles may vary. Consult your owner's manual and weight sticker affixed to each vehicle for complete loading, weighing, and towing instructions.

WARRANTY: The vehicles are provided with a one-year, 15,000-mile limited warranty and a three-year, 45,000-mile limited structural warranty. Chassis,

component part and appliance manufacturers issue limited warranties covering those portions of the vehicle not covered by the limited warranties issued by Four Winds International. To learn what portions of the vehicle are excluded from coverage under the limited warranties issued by Four Winds International, please contact your selling dealership or Four Winds International directly, or review the warranty packet inside the vehicle.

Product information, specifications, and photography in this brochure were as accurate as possible at time of printing. Photographs may contain some features

that are optional on your vehicle. Since we continually strive to improve our products, actual products may differ. The manufacturer reserves the right, at any time, to make changes in product design, materials, component specifications and pricing, without notice. All capacities are approximate and dimensions are nominal. Some features or options may be different or unavailable in Canada.



© 2009 Four Winds International
Litho USA 1109 - 10M