

SALEM

# VILLA

SERIES

DESTINATION TRAILERS

LIVE. LAUGH. CAMP!

SALEM  
VILLA  
SERIES





# 402QBQ

FRENCH ROAST DECOR



OPTIONAL OUTSIDE KITCHEN  
(PER FLOORPLAN)



SALEM  
**VILLA**  
*Classic*

## Salem Villa Classic

The Villa Classic series has everything you want for destination living. It comes with a standard PATIO DOOR for easy access and 84" of ceiling height to give you enough room to RELAX IN COMFORT. With features like the IVC plank wood linoleum, residential style carpet, free standing range and your choice of our gorgeous decors, you might want to EXTEND YOUR STAY. The Villa Classic lives up to its name in **QUALITY, COMFORT** and **DESIGN**.



OPTIONAL JIFFY SOFA W/  
FLIP DOWN ARMREST SHOWN IPO BUNK



# 393RLT

WALNUT DECOR

L A Z B O Y





SALEM  
**VILLA**  
*Estate*

## Salem Villa Estate

With the Villa Estate series, you know you've arrived in luxury. No matter where your destination takes you these trailers will always give you **THE SENSE OF HOME**. Every attention to detail has been accounted for, plush with elegant upgrades, the Villa Estate really sets itself apart. Everything from the **DECORATIVE PILLOWS** and **RESIDENTIAL COMFORTER** in the master bedroom to the **STONE FACADE** around the fireplace, these features will give you the style and comfort you deserve. The Villa Estate is the **ULTIMATE CHOICE** for destination living.



# 394FKDS

SUEDE DECOR

L A Z B O Y





SALEM  
**VILLA**  
*Estate*



**407REDS** LA-Z-BOY WALNUT DECOR

## Salem Villa Interior Features

- |   |  |                             |
|---|--|-----------------------------|
| A. OVERHEAD CABINET 14" DEEP FOR LARGE PLATES | F. RESIDENTIAL REFRIGERATOR W/ ICE MAKER                       | L. PLEATED NIGHT SHADES     |
| B. TINTED RADIUS SAFETY GLASS WINDOWS         | G. DECORATIVE OVERHEAD DINING LIGHT                            | M. IVC PLANK WOOD LINOLEUM  |
| C. 84" INTERIOR HEIGHT                        | H. HARDWOOD RAISED PANEL DOORS                                 | N. RESIDENTIAL STYLE CARPET |
| D. (4) SPEAKER SOUND SYSTEM                   | I. LA-Z-BOY RECLINERS (OPTIONAL)                               | O. 32" LCD TV (OPTIONAL)    |
| E. HIGH DEFINITION COUNTERTOPS                | J. RESIDENTIAL SIZE MICROWAVE                                  |                             |
|   | K. 4-BURNER RANGE WITH OVEN AND VENT HOOD (ESTATE MODELS ONLY) |                             |



# Salem Villa Construction



## SALEM VILLA SERIES



## Amish Craftsmanship



### EXCELLENT CRAFTSMANSHIP

Only the finest attention to detail goes into each Salem. Our skilled craftsmen have many years of experience building beautifully finished cabinetry. The solid nature of our well designed woodwork is another reason why Salem is the best built RV on the road.



## Salem Villa Construction Features

- |  |  |  |
|--|--|--|
| <p>A. RADIUS TRIPLE ENTRY STEPS</p> <p>B. 102 IN. EXTERIOR WIDTH FOR INCREASED LIVING SPACE (96" VILLA CLASSIC)</p> <p>C. NEW BAY FRONT ON ALL MODELS</p> <p>D. HITCH LIGHT</p> <p>E. STANDARD PATIO DOOR</p> <p>F. 15" RADIAL TIRES (16" WITH OPTIONAL FIBERGLASS EXTERIOR)</p> | <p>G. 12" I-BEAM POWDER-COATED FRAME W/ CAMBERED CHASSIS</p> <p>H. 5/8" TONGUE &amp; GROOVE PLYWOOD FLOORING</p> <p>I. RESIDENTIAL CARPET W/ PADDING</p> <p>J. FENDER SKIRT</p> <p>K. 2" WALL STUDS 16" ON CENTER</p> <p>L. 2" X 3" FLOOR JOISTS 12" ON CENTER</p> <p>M. 15K BTU DUCTED HIGH OUTPUT A/C (13.5K ON CLASSIC)</p> | <p>N. ONE PIECE, SEAMLESS ROOF (12 YR. WARRANTY)</p> <p>O. 3/8" ROOF DECKING (FULL WALK-ON ROOF)</p> <p>P. R-7 FIBERGLASS INSULATION THROUGHOUT</p> <p>Q. DUAL LP BOTTLE COVER W/ EASY ACCESS</p> <p>R. 5" TRUSS ROOF RAFTERS (16" ON CENTER)</p> <p>S. FLOOD LIGHT (VILLA ESTATE ONLY)</p> <p>T. .024 ALUMINUM SIDING (FIBERGLASS OPT.)</p> <p>U. 84" INTERIOR HEIGHT VILLA CLASSIC/ESTATE</p> <p>V. 110V RESIDENTIAL STYLE EXTERIOR LIGHTS (2)</p> |
|--|--|--|

# Salem Villa Classic/ Villa Estate Features



IVC PLANK WOOD LINOLEUM



DRAWERS WITH BALL BEARING DRAWER GUIDES



WEATHER PROOF EXTERIOR SPEAKERS



CLOTH NIGHT SHADES



SATELLITE/CABLE HOOK-UP



PATIO DOOR W/ AMBER SAFETY LIGHT



5/8" TONGUE IN GROOVE FLOOR DECKING



SELF EDGED COUNTERTOPS



HIGH RISE FAUCET W/ PULL OUT SPRAYER



CEILING FAN



RESIDENTIAL 18 CU. FT. REFRIGERATOR W/ ICE MAKER



FOOT FLUSH TOILET

# Salem Villa Estate Upgrades



WHOLE UNIT WATER FILTRATION SYSTEM



SERTA® DREAMSCAPE MATTRESS



FREE STANDING DINETTE



FANTASTIC™ FAN



COMFORT FLEX BED FRAME



FROST RESISTANT WATER SPIGOTS



4-BURNER FREE STANDING RANGE W/  
20" X 20" OVEN DOOR



20 GALLON ELECTRIC WATER HEATER



SHAW STAIN RESISTANT CARPET



ELECTRIC FIREPLACE (MOST  
ESTATE MODELS)

SALEM  
**VILLA**  
SERIES

# Salem Villa Classic Standards and Options

## Comfort and Convenience

- NEW IVC plank wood linoleum
- 84" interior height
- Black framed tinted safety glass windows
- Powered self supporting slide rooms
- Pleated night shades
- Triple sealed slide-outs
- Water heater by-pass
- 16-gallon per hour quick recovery G/E DSI water heater
- Ducted Dometic® 13,500 BTU central air conditioner w/ quick cool feature
- In-floor ducted heat w/ 35K BTU furnace
- Stain resistant carpet w/ padding
- Flush-floor slide rooms
- Systems monitor panel
- 6' 2" tall slide rooms
- Ultra lube axles
- Solid wood drawer fronts w/ ball bearing drawer glides

## Kitchen

- NEW Hardwood booth table top
- Extra large overhead cabinets
- Raised panel overhead cabinet doors
- 18.5 cu. ft. residential refrigerator w/ ice maker
- 12-volt power range hood w/ light
- Microwave w/ carousel

- Acrylic 60/40 residential style kitchen sink
- Built in knife holder behind stove
- Pull out sprayer faucet at kitchen sink
- Kitchen waste basket
- Pantry with shelves (most models)

## Living Room

- Swivel rocker chair (per floorplan)
- Jensen™ DVD/CD/AM/FM stereo w/ mp3 hook-up
- Cathedral ceiling with ceiling fan
- Surround sound with TV hook-up
- Digital TV antenna w/ booster
- Cable and satellite ready
- Extra large picture window at dinette
- Extra large dinette for more comfortable dining and sleeping
- Decorative lights in slide-out

## Bedroom

- Serta Bradley mattress
- Fitted bedspreads and headboard
- Lift-up beds w/ gas struts
- Cable TV hook-up
- Solid privacy doors

## Bathroom

- Built-in wood medicine cabinet and mirror
- Ceiling light w/ convenient wall switch
- Foot flush toilet(s)
- ABS tub or shower w/ one-piece surround

## Exterior

- NEW Bay front
- NEW 110v lights on front (2)
- Two (2) exterior speakers
- Smooth fiberglass radius baggage doors w/ thumb pulls and holdbacks
- Cold crack and mildew resistant vinyl patio awning
- Patio door w/ screen
- Steel framed 30" smooth fiberglass radius entry door
- 15" radial tires
- Swing arm entry assist handle
- 2-30 lb. LP tanks w/ automatic change over
- EZ access LP tank cover
- City water fill

## Construction

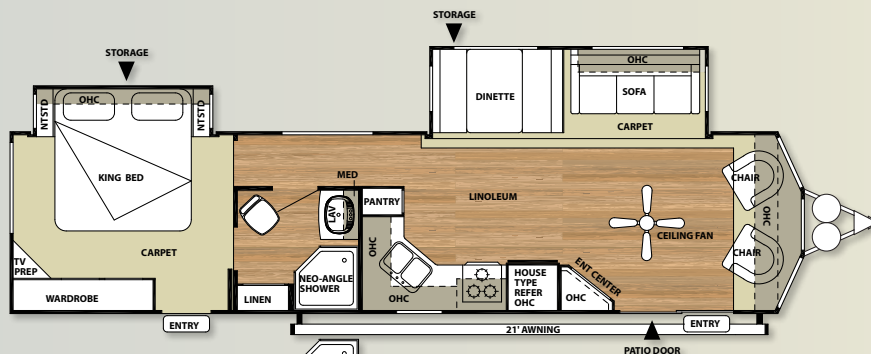
- 10" Extruded I-beam frame
- Cambered chassis
- Fresh water tank
- 2" x 3" floor joists 12" on center
- 5/8" 5-ply tongue and groove plywood floor decking
- 2" wall studs maximum 16" on center
- 5" bowed truss roof rafters
- 3/8" walk-on roof decking
- Seamless, one-piece roof w/ 12 year warranty
- R-7 insulation

## Security and Safety

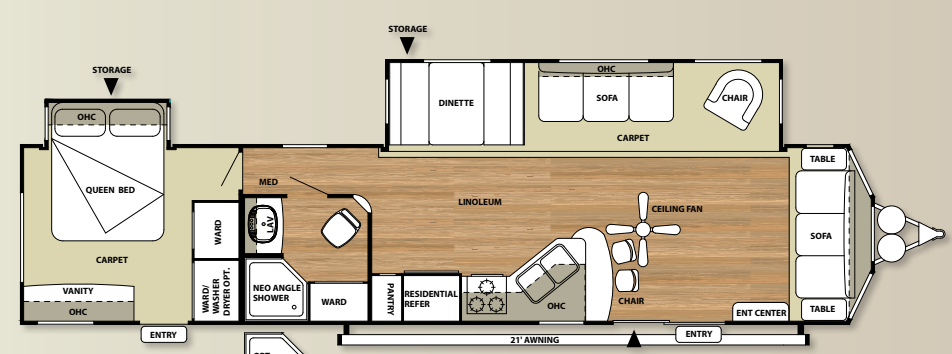
- Smoke detector
- Fire extinguisher
- Carbon monoxide detector
- LP gas leak detector
- Amber porch light w/ interior switch
- Screen door w/ safety latch
- GFI receptacles and covered patio outlet
- Welded heavy duty safety chains
- Hitch light
- Lockable fiberglass radius baggage doors
- ANSI 119.5
- Certified to meet all National Highway Traffic Safety Administration Specifications

## Popular Options

- La-Z-Boy sofa w/ hide-a-bed
- La-Z-Boy (decor only)
- La-Z-Boy recliners
- Gel coat fiberglass exterior
- 10-gallon gas/electric DSI water heater
- Skylight over tub
- Air hide-a-bed sofa
- Outside kitchen (402QBQ only)
- Free standing dinette w/ 4 chairs
- Outside shower

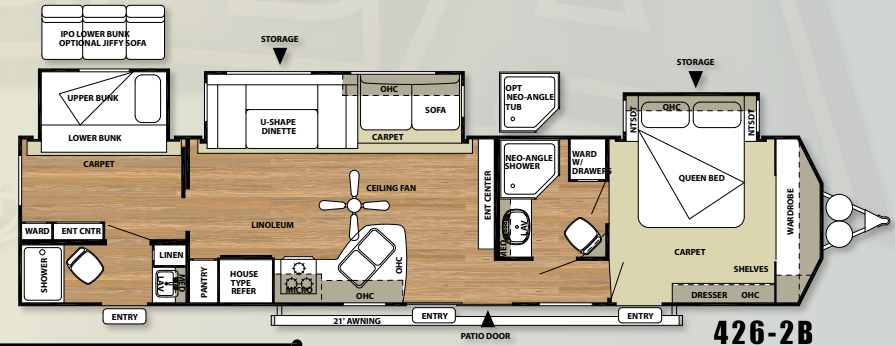
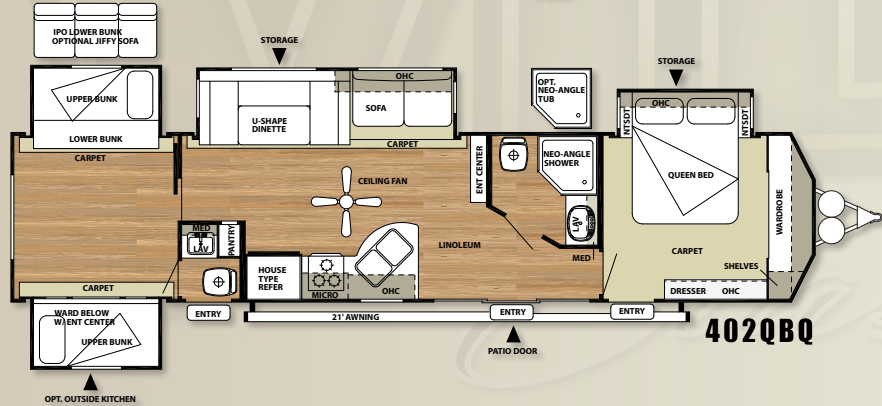
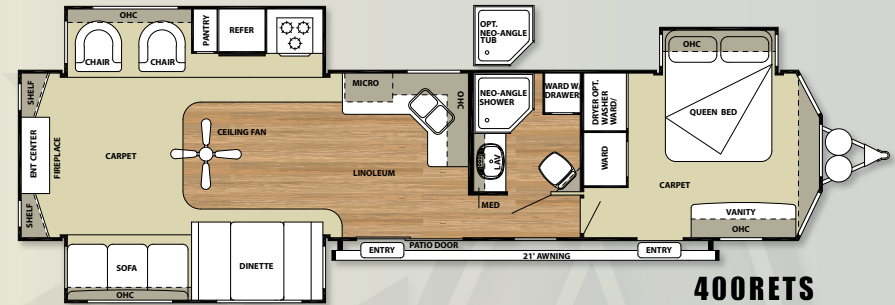
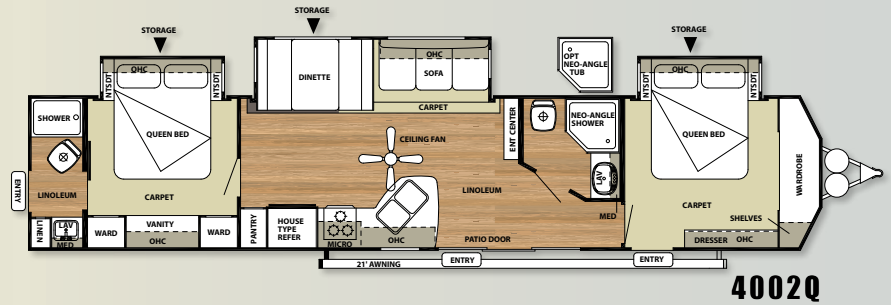
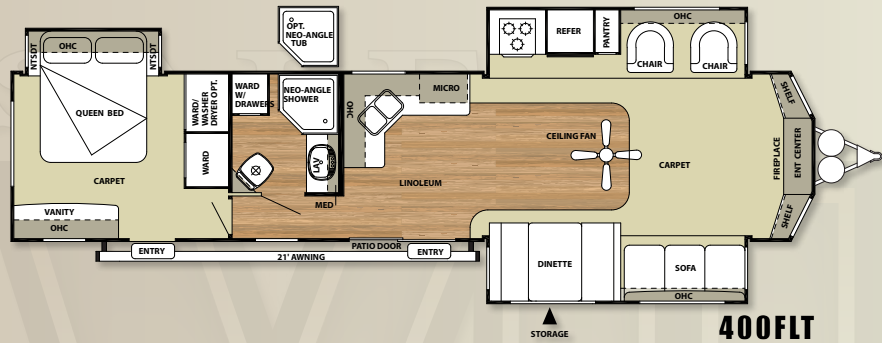


353FLFB



39FDEN

# Salem Villa Classic Floorplans



## villa classic specifications

MODEL	353FLFB	39FDEN	4002Q	400FLT	400RETS	402QBQ	426-2B
Hitch Weight (lbs)	1290	1362	1260	1490	1375	1075	1365
Axle Weight	7330	8363	8980	8480	8685	9510	8810
Dry Ship Weight	8620	9725	10240	9970	10060	10585	10175
CCC (cargo cap)	2770	1738	1121	1620	1415	2431	1290
Ext Length	38'6"	40'10"	43'5"	40'9"	40'9"	40'8"	40'5"
Ext Height	12'3"	12'3"	12'3"	12'3"	12'3"	12'3"	12'3"
Int Height (in)	84"	84"	84"	84"	84"	84"	84"
Fresh Water Cap (gal)*	39	39	39	39	42	39	39
Black Water Cap (gal)	30	40	70	43	43	70	62
Grey Water Cap (gal)	40	40	80	43	43	80	80
Tire Size (in)	15"	15"	16"	15"	15"	16"	15"
Awning Size (ft)	21'	21'	21'	21'	21'	21'	21'

\*Includes hot water heater



**LIVE.  
LAUGH.  
CAMP!**

# Salem Villa Estate Standards and Options

## Comfort and Convenience

- NEW IVC plank wood linoleum
- 102" exterior width for increased living space
- Frost proof garden hose spigot (off door side)
- Black framed tinted glass windows
- WaterPur whole house water filtration system
- Water heater by-pass
- Wired and braced for second A/C
- Pleated night shades
- 20-gallon electric water heater
- Ducted Dometic® 15,000 BTU central air conditioner w/ quick cool feature
- In-floor ducted heat w/ 40K BTU furnace
- Shaw stain resistant carpet w/ padding
- Flush-floor hydraulic slide rooms w/ manual override
- Systems monitor panel
- 50 amp electrical service and 65 amp 12 volt converter
- Solid hardwood drawer fronts

## Kitchen

- NEW Hardwood booth table top
- Free standing dinette with 4 chairs
- Deluxe window package at dinette
- Extra large raised panel overhead cabinets
- Full extension ball bearing drawer guides
- 20" free standing 4 burner gas range w/ oven (black)
- 18.5 cu. ft. residential electric refrigerator w/ icemaker (black)
- Microwave with carousel and range hood (black)
- Hidden storage beneath dinette seat cushions
- Undermount stonecast 60/40 residential style sink
- Pull out sprayer faucet
- Pantry with shelves
- Self edge countertops throughout

## Living Room

- Swivel rocker chair(s) (per floorplan)
- Surround sound TV hook-up
- Jensen™ DVD/CD/AM/FM stereo w/ mp3 hook-up
- 4 cube speakers and sub woofer
- Digital TV antenna w/ booster
- Cable and satellite door side hookup
- Glass sliding patio door w/ vertical blinds and screen door
- Ceiling fan with wall switch

## Bedroom

- Serta® "Dreamscape" mattress
- Bedspread and headboard
- Bedroom roof vent
- Ceiling fan w/ wall switch
- Comfort Flex (box spring) bed frame
- Under bed storage
- Cable TV hook-up
- Shaw Stain resistant carpet w/ padding
- Solid privacy doors

## Bathroom

- Neo-Angle shower w/ glass door
- Built-in wood medicine cabinet and mirror
- Ceiling light w/ convenient wall switch
- Full extension ball bearing drawer guides
- Foot flush toilet(s)
- ABS shower w/ one-piece surround
- 12" 10-blade Fantastic Bath Fan™
- Toothbrush holder and towel ring

## Exterior

- Smooth fiberglass radius baggage doors
- NEW 110v lights on front (2)
- Cold crack and mildew resistant vinyl awning
- 15" radial tires (per floorplan)
- 30 lb. double LP tanks w/ automatic change over
- EZ access LP tank cover
- City water fill w/ brass valve
- Swing out entry assist handle
- Two (2) exterior speakers

## Construction

- 12" forged I-beam frame
- Cambered chassis
- Seamless holding tanks
- Color coded water lines
- 2" x 3" floor joists 12" on center
- 5/8" 5-ply tongue and groove plywood floor decking
- 2" wall studs maximum 16" on center
- 5" bowed truss roof rafters
- 3/8" walk-on roof decking
- One-piece, seamless roof w/ 12 year warranty
- Triple sealed slide outs
- R-7 insulation throughout (floors, walls, ceilings, and slide-outs)

## Security and Safety

- Smoke detector
- Fire extinguisher
- Carbon monoxide detector
- LP gas leak detector
- Door latch w/ integrated dead bolt lock
- Lighted main entry step w/ interior switch
- Amber porch light w/ interior switch
- Main entry doorside flood light
- GFI receptacles and covered patio outlet
- Welded heavy duty safety chains
- Hitch light
- Lockable fiberglass radius baggage doors
- ANSI 119.5
- Certified to meet all National Highway Traffic Safety Administration Specifications

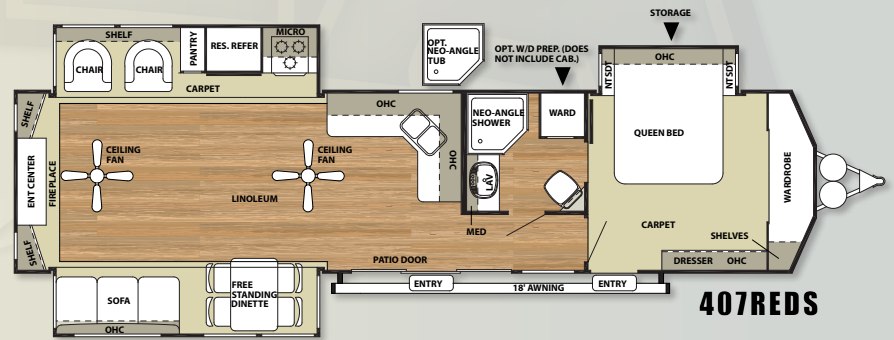
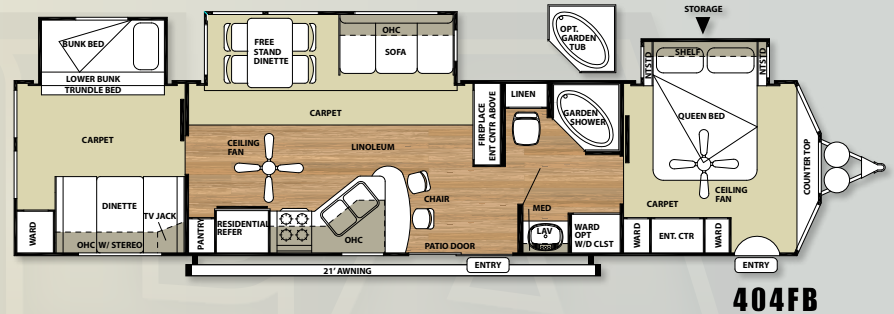
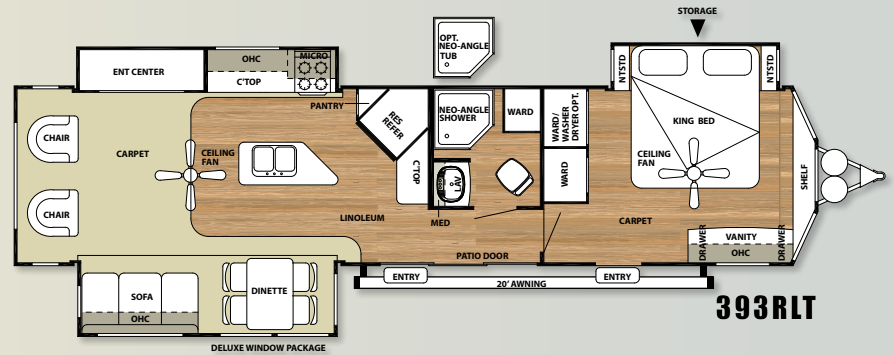
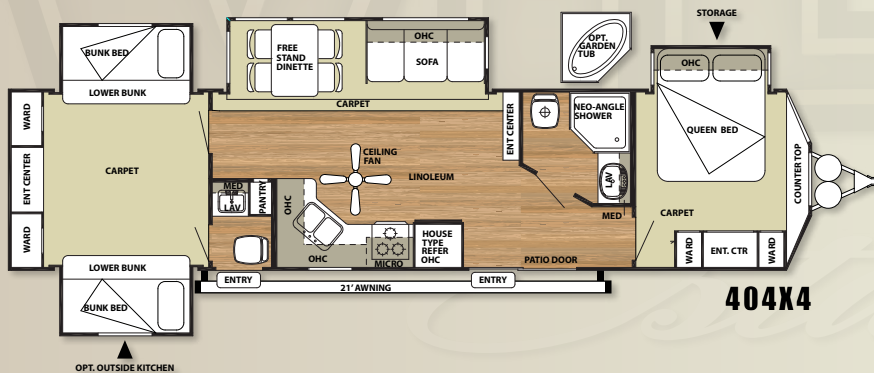
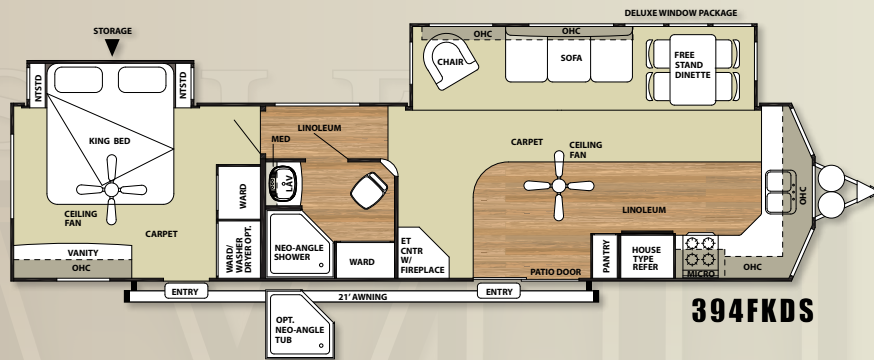
## Popular Options

- Gelcoat fiberglass exterior
- Skylight over tub
- Garden tub with glass door (per floorplan)
- La-Z-Boy® living room furniture (a Forest River exclusive)
- Air hide-a-bed sofa
- Detachable hitch
- Outside shower
- 10-gallon gas/electric DSI water heater (IPO 20 gal electric)

## Optional Equipment

- La-Z-Boy recliners
- La-Z-Boy sofa w/ hide-a-bed (Must choose Suede decor)
- Detachable hitch
- Gel coat exterior upgrade

# Salem Villa Estate Floorplans



## villa estate specifications

MODEL	393RLT	394FKDS	404X4	404FB	407REDS
Hitch Weight (lbs)	1492	1555	1385	1120	1330
Axle Weight	9168	8520	9315	10160	8930
Dry Ship Weight	10660	10075	10700	11280	10260
CCC (cargo cap)	2773	1581	2626	1780	3010
Ext Length	40'5"	40'10"	41'11"	41'0"	39'11"
Ext Height	10'9"	11'9"	10'9"	10'9"	10'9"
Int Height (in)	84"	84"	84"	84"	84"
Fresh Water Cap (gal)*	39	39	39	50	39
Black Water Cap (gal)	40	30	30	70	40
Grey Water Cap (gal)	80	80	80	80	40
Tire Size (in)	16"	15"	16"	16"	16"
Awning Size (ft)	20'	21'	21'	21'	18'

\*Includes hot water heater

SALEM  
**VILLA**  
*Estate*



**PRE-DELIVERY INSPECTION FACILITY**

20,000 square feet of quality assurance. The bare essentials for a premium product. This state-of-the-art facility gives immediate daily feedback to production for quality assurance



Forest River, Inc. encourages our customers to purchase their Forest River products from a local dealership whenever possible for the following reasons:

- 1) Forest River, Inc. dealers are independently owned and operated businesses so priority service and scheduling is at their discretion and is often provided to customers that purchased their unit at that dealership.
- 2) Purchasing locally allows customers to establish meaningful relationships with a dealer, enhancing the RV experience through assistance with product questions, user tips or RV regulations for your state or country, and much more!
- 3) Canadian customers must meet requirements to bring an RV purchased out of the country to their home. These requirements may involve additional inspections and certifications, taxes and fees. Your local Canadian Dealer is a professional at meeting these requirements.
- 4) Scheduling timely warranty repairs and adjustments through a local dealership provides far greater flexibility and convenience to you, the customer!

It is the goal of Forest River, Inc. that all of our RV owners fully enjoy the RV experience and that customer satisfaction meets or exceeds their expectations!

**24/7 EMERGENCY ROADSIDE ASSISTANCE**

For a worry-free ownership experience

Forest River includes one

year of Coach-Net RV Technical & Roadside Assistance with each RV purchase. Whether new to the RV lifestyle or an experienced RV enthusiast, Forest River owners have 24/7 access to technical, operational and emergency road service coverage throughout the US & Canada. Coach-Net's fast, dependable service is just a phone call away.

**Coach-Net®**

RV Technical & Roadside Assistance

**FREE MEMBERSHIP**  
to Forest River Owners' Group

[www.forestriverfrog.com](http://www.forestriverfrog.com)



L A Z B O Y

**WALNUT DECOR**



L A Z B O Y

**SUEDE DECOR**



**FRENCH ROAST DECOR**



**THE SALEM FAMILY**



CRUISE LITE



SALEM



VILLA SERIES



HEMISPHERE



**Learn More**

Scan this barcode using a QR Reader on your smart phone to learn more about Forest River.



A Berkshire Hathaway company.

Forest River, Inc.  
55470 C.R. 1, Elkhart, IN 46515  
(574) 389-4600

[www.forestriverinc.com/villa](http://www.forestriverinc.com/villa)  
[www.forestriveraccessories.com](http://www.forestriveraccessories.com)

All specifications contained herein are based on the latest product information at time of printing. Forest River reserves the right to make changes in colors, materials, equipment and specifications at any time without notice and assumes no responsibility for any errors in this brochure. The pictures in this brochure may show props and optional equipment. PLD918

© 2014- Villa - a division of Forest River Inc.  
A Berkshire Hathaway company

