

Lexington

FLOORPLANS & SPECIFICATIONS

The compact design of the Lexington conceals a spacious interior with all the comforts of home. With upgraded amenities throughout, quality materials and craftsmanship the Lexington has once again raised the bar. What else would you expect from the Leader in its class?

SPECIFICATIONS

FORD CHASSIS	210	235S	255DS	283TS	295DS	300SS
WHEELBASE	NA	168"	180"	208"	212"	223"
GVWR	NA	14500	14500	14500	14500	14500
GAWRR	NA	9500	9500	9500	9500	9500
GAWRF	NA	5000	5000	5000	5000	5000
UVW	NA	10600	11635	12550	12550	12410
GCWR	NA	20000	20000	20000	20000	20000
NCC	NA	3900	2865	1950	2000	2090
FUEL CAPACITY (GAL)	NA	55	55	55	55	55
DIESEL ENGINE OPTION	NA	YES	YES	NA	NA	NA
HITCH RATING	NA	5k/500	5k/500	5k/500	5k/500	5k/500
LENGTH - BUMPER TO BUMPER	NA	24'-4"	27'-0"	30'-6"	31'-4"	32'-1"

CHEVY CHASSIS

WHEELBASE	139"	169"	181"	NA	213"	224"
GVWR	12300	12300	14050	NA	14050	14050
GAWRR	8600	8600	9450	NA	9450	9450
GAWRF	4300	4300	4600	NA	4600	4600
UVW	9090	10370	***	NA	***	***
GCWR	16000	16000	17600	NA	17600	17600
NCC	3210	1930	***	NA	***	***
FUEL CAPACITY (GAL)	35	57	57	NA	57	57
HITCH RATING	3.5k/350	3.5k/350	3.5k/350	NA	3.5k/350	3.5k/350
LENGTH - BUMPER TO BUMPER	21'-11"	24'-11"	NA	NA	NA	NA

CAPACITIES & DIMENSIONS

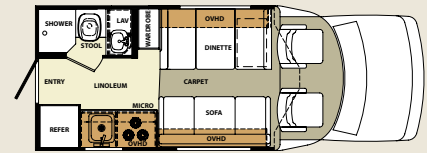
EXTERIOR HEIGHT WITH A/C	10'-5"	10'-5"	10'-5"	10'-5"	10'-5"	10'-5"
EXTERIOR WIDTH	94.5"	94.5"	94.5"	94.5"	94.5"	94.5"
INTERIOR WIDTH	89.5"	89.5"	89.5"	89.5"	89.5"	89.5"
INTERIOR HEIGHT	78"	78"	78"	78"	78"	78"
FRESH WATER (GAL)	25	25	44	44	40	40
GREY WATER (GAL)	27	27	35	35	35	35
BLACK WATER (GAL)	27	27	35	35	35	35
L.P. CAPACITY (GAL)	9.8	9.8	9.8	9.8	9.8	9.8
AWNING LENGTH	9'-6"	12'-6"	16'	19'	16'	16'
WATER HEATER (GAL)	6	6	6	6	6	6

*** Not available at time of printing.

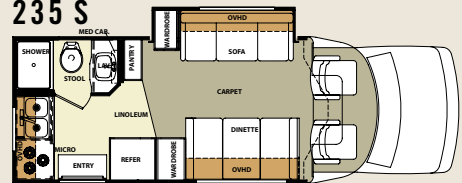


The Lexington GTS shown above with the taupe skirt paint.

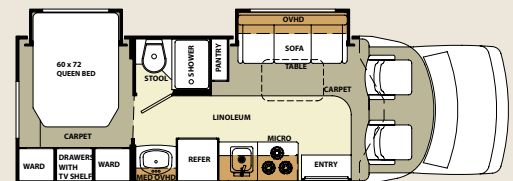
210



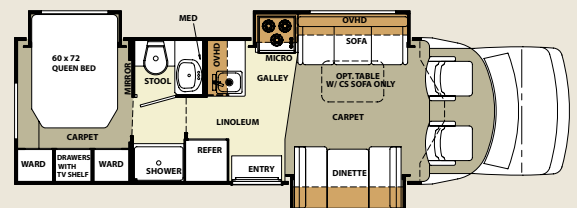
235 S



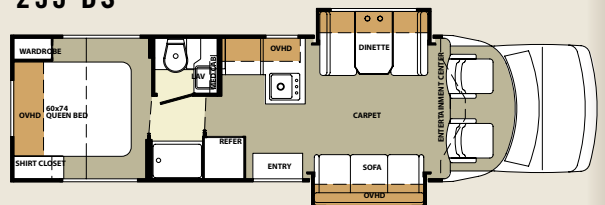
255 DS



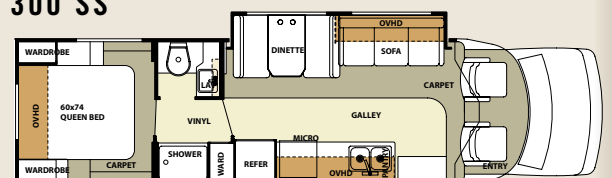
283 TS



295 DS



300 SS



Lexington

STANDARDS & OPTIONS

WARRANTY:

STANDARD FEATURES

- 12 Months/ 12,000 miles basic limited warranty
- Limited Bumper-to-Bumper 3 years/ 36,000 miles chassis warranty (Ford)
- Limited 5 years/ 60,000 mile Powertrain warranty(Ford)
- Limited 3 years/36,000 mile warranty (Chevy)
- Limited 5 years/100,000 Powertrain warranty (Chevy)

STANDARD FEATURES

- Maple wood throughout with raised panel doors
- Residential drawer guides
- Filon fiberglass exterior
- Porcelain toilet
- Fiberglass roof
- Gas/electric electronic ignition DSI water heater
- Battery Disconnect
- Power windows and door locks
- Arctic package
- Night shades
- Convenience Center
- Range top
- Sink cover
- 20" flatscreen TV
- Curved arm awning
- TV antenna

- 13.5 BTU ducted roof A/C
- Microwave/convection oven
- Phone, 110 and 12 volt jacks
- Cable TV jacks
- Stainless steel wheel liners
- Generator auto transfer switch
- Water filtration system
- Running boards
- 5,000 lb. tow hitch with 7-pin connector(Ford)
- 3,500 lb. tow hitch with 7-pin connector(Chevy)
- AM/FM/CD player
- Upgraded driver and passenger seats
- Cab area privacy curtains
- Cruise control
- Power vent in bathroom
- Rotocast storage compartments
- Slide-room awnings
- Exterior breakaway mirrors
- CO and smoke detectors
- ABS stepwell
- Emergency start switch
- Black tank flush
- Exterior security light
- One year CoachNet service

LEXINGTON OPTIONS

- Slide-out battery tray
- Additional coach battery
- Rear ladder
- Deluxe wood grain dash

- Fantastic Fan in living room
- 4.0 Onan generator
- 40G Guardian generator
- Electric step(N/A 210)
- Outside shower
- Spare Tire
- Back-up camera with monitor
- 15" flatpanel TV in bedroom
- Spare Tire
- DVD player
- 15K BTU air conditioner with heat pump
- Bigfoot hydraulic automatic leveling jacks
- 450 watt inverter

LEXINGTON GTS

ADDITIONAL FEATURES

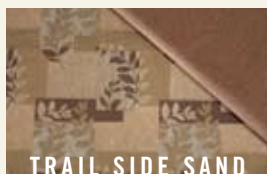
- Premium surround sound package
- Corian solid surface galley with sink covers
- Maple or cherry wood throughout with raised panel doors
- Ultra leather furniture appointments
- Gel-coat high gloss fiberglass exterior
- Exterior paint package
- Cedar lined wardrobes
- Fantastic fan in livingroom
- Deluxe wood grain dash
- Slide-out battery tray
- Residential light fixtures
- Power heated remote exterior mirrors

- Upgraded kitchen and bath fixtures
- Vinyl soft touch ceilings
- Outside shower
- Outside entertainment center
- Security light
- Day/night shades
- Additional coach battery

LEXINGTON GTS OPTIONS

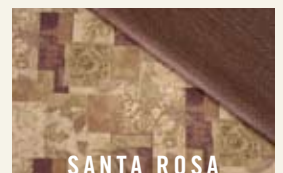
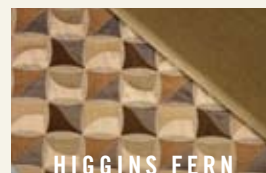
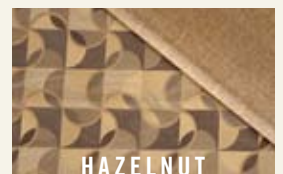
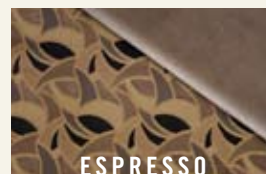
- 15K BTU air conditioner with heat pump
- King Dome HD ready satellite system
- Trac-King in-motion HD ready satellite
- Fantastic fan in bedroom
- Rear ladder
- 4.0 Onan generator
- 40G Guardian generator
- Electric step(N/A 210)
- 15" flatpanel TV in bedroom
- 26" LCD flat panel TV with exterior mount
- Spare Tire
- Bigfoot hydraulic automatic leveling jacks
- Spare Tire
- Back-up camera with monitor
- Full body paint with front end paint protection
- 450 watt inverter

LEXINGTON FABRICS



A. CHERRY (GTS ONLY) B. MAPLE

LEXINGTON GTS FABRICS



Forest River, Inc. 914 C.R. 1 Elkhart, IN 46514
 574.262.2212 800.445.2825 www.forestriverinc.com
 www.forestriveraccessories.com

YOUR LEXINGTON DEALER

All specifications contained herein are based on the latest product information at time of printing. Forest River reserves the right to make changes in colors, materials, equipment and specifications at any time without notice and assumes no responsibility for any errors in this brochure. LITHO U.S.A FOR 0596