



Generations of family fun.

REDHAWK™

2016

GO EXPLORING
#LETSJAYCO

2016 REDHAWK CLASS C MOTORHOMES



HANDS DOWN,
THE BEST RIDE.

2
YEAR
WARRANTY





#LETSJAYCO

When you travel with Jayco, fun is the only thing on the agenda. That's because we go the extra mile so you can live in the moment. From comfortable, amenity-packed floorplans to weather-shielding insulation and superior frame construction, you'll have everything you need to adventure every day and make yourself at home every night. Let's get away. Let's make it count. Let's Jayco—and make memories that last a lifetime.

GENERATIONS OF FAMILY FUN



REDHAWK

WE CARE ABOUT GETTING THERE AS MUCH AS BEING THERE

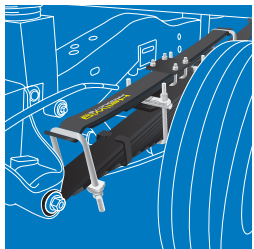
The 2016 Redhawk offers one of the best values in its category—without skimping on superior handling and solid construction. When the ride is this smooth, you'll never want to go home.



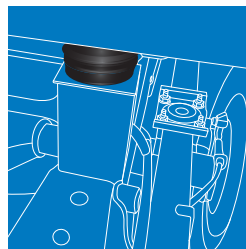
A REDHAWK STANDARD

JRide is a powerful blend of precise handling and renowned stability.

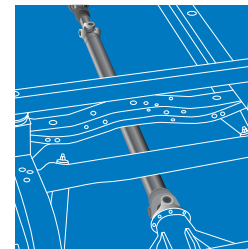
Put JRide to the test—and rule out the competition.



1. Hellwig® helper springs work with the chassis' existing springs to give the RV more support, improving sway control under heavy loads



2. Rubber isolation body mounts are positioned near the tires to absorb road shock, dampen noise and minimize vibrations



3. Computer-balanced driveshaft ensures reduced shudder and vibrations, and efficient power transfer to the wheels

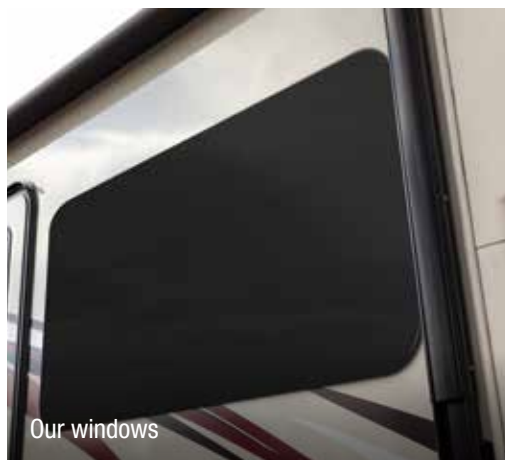
SHARE YOUR PHOTOS AND STORIES ON SOCIAL MEDIA WITH [#LETSJAYCO](https://www.instagram.com/letsjayco)



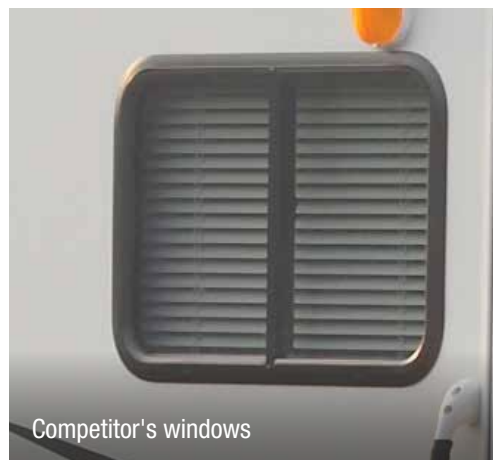
Jayco
Generations of family fun.



29XK interior



Our windows



Competitor's windows



Our front cap



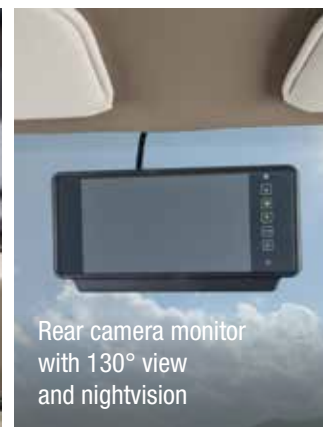
Competitor's front cap

Large frameless windows create a stunning exterior look while protecting the window seals from UV radiation

Seamless fiberglass front cap for increased durability and leak protection



31XL cockpit



Rear camera monitor with 130° view and nightvision



Rear camera integrated into third brakelight



7,500-pound hitch with 750-pound tongue capacity*

*Ford chassis only



31XL cab-over bunk area rated at 750 pounds

INTERIOR DÉCOR

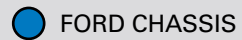
CHESTNUT



DOVE



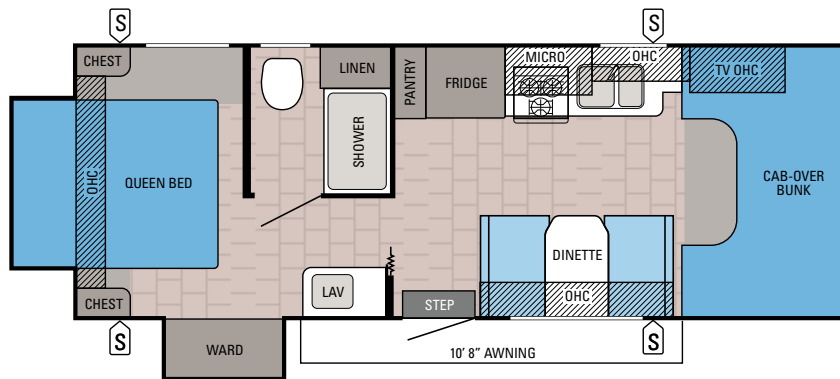
FLOORPLANS



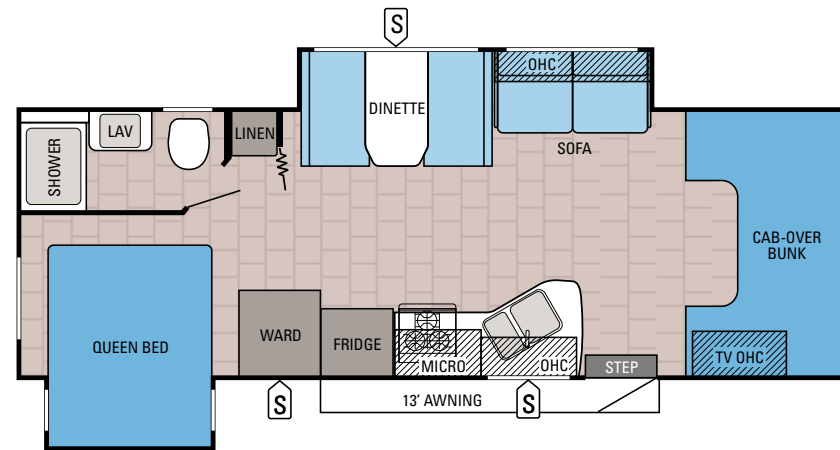
FORD CHASSIS



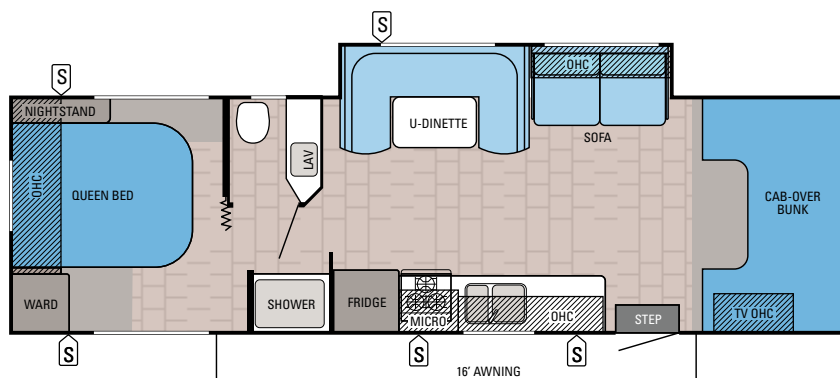
CHEVY CHASSIS


REDHAWK | 23XM

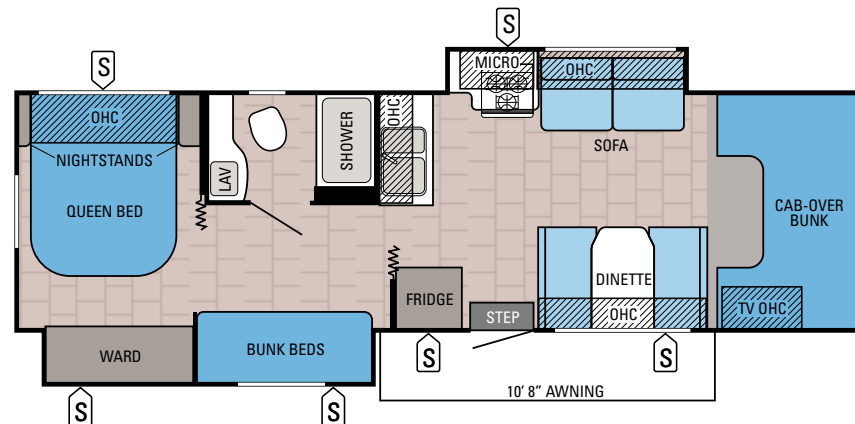
Exterior Length: 26' 3" Exterior Height: 11' 7" Sleeps: 5-6


REDHAWK | 26XD

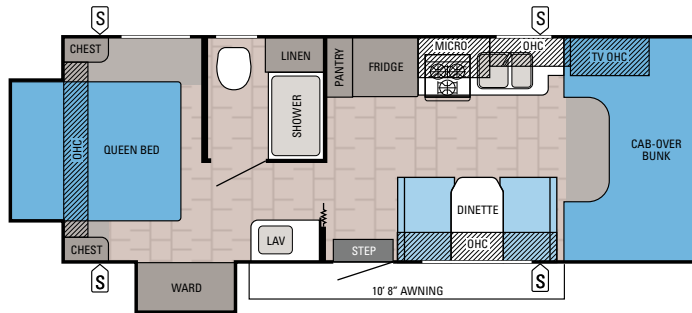
Exterior Length: 28' 3" Exterior Height: 11' 6" Sleeps: 6-7


REDHAWK | 29XK

Exterior Length: 32' Exterior Height: 11' 5" Sleeps: 6-7

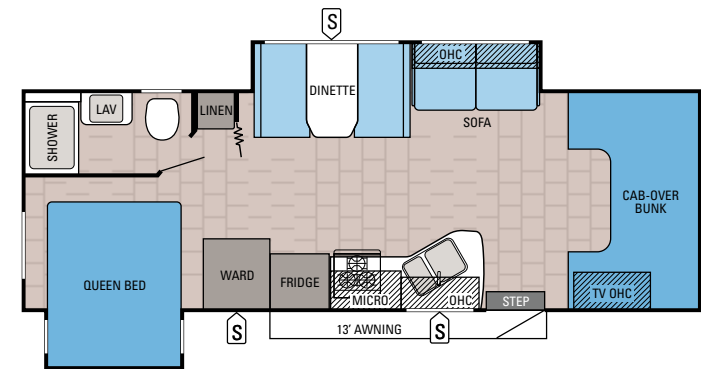

REDHAWK | 31XL

Exterior Length: 32' Exterior Height: 11' 5" Sleeps: 8-9



REDHAWK | 23X2

Exterior Length: 26' 3" Exterior Height: 11' 7" Sleeps: 5-6



REDHAWK | 26X1

Exterior Length: 28' 3" Exterior Height: 11' 6" Sleeps: 6-7

STANDARDS AND OPTIONS

CUSTOMER VALUE PACKAGE

- _____ Cream colored fiberglass sidewalls
- _____ Frameless windows
- _____ Front-molded seamless fiberglass cap
- _____ 12V electric patio awning
- _____ 400-watt inverter
- _____ Black holding tank sprayer
- _____ Rear backup camera and monitor
- _____ Heated holding tanks (12V pads)
- _____ 8-cubic-foot, flush-mount, double-door refrigerator
- _____ LED HDTV power swivel bracket
- _____ Aux input jack

STANDARD EXTERIOR EQUIPMENT

- _____ Vacuum-bonded, laminated roof, floor and sidewalls
- _____ Bead-foam insulation (R-15 max roof, R-9 max floor, R-5 max walls)
- _____ Aluminum running boards
- _____ Fiberglass, radius-cornered entrance door with screen door
- _____ Electric-powered entrance step
- _____ Pass-through storage compartment with light (select models)
- _____ Onan® 4,000-watt MicroQuiet™ generator
- _____ 42-pound propane tank
- _____ 120V GFCI-protected exterior receptacle
- _____ 30-amp power cord
- _____ 12V electrical system with 120V, 60-amp power converter
- _____ Slideout battery tray
- _____ Outside shower
- _____ 4-inch bumper-tube sewer hose storage
- _____ Roof ladder (n/a 23XM, 23X2)
- _____ Leveling jack prep

STANDARD INTERIOR EQUIPMENT

- _____ Honey Cherry cabinetry and doors with nickel cabinet hardware
- _____ Ball-bearing drawer guides
- _____ 3-burner range with 9,000-BTU SuperBurner™ and piezo igniter
- _____ Convection microwave oven (23XM, 26XD, 29XK, 23X2, 26X1)
- _____ 12V demand water pump
- _____ 6-gallon gas/electric DSI auto-ignition water heater
- _____ Water filtration system
- _____ Dream Dinette mechanism, easily raises and lowers dinette tabletop (23XM, 26XD, 31XL, 23X2, 26X1)
- _____ Lap safety belts on all living area seats
- _____ Linoleum flooring
- _____ Interior command center
- _____ Cable TV hookup with RG-6 coax
- _____ Digital antenna with signal meter and powered amplifier
- _____ 15,000-BTU ducted A/C
- _____ 31,000-BTU auto-ignition furnace with wall thermostat
- _____ ABS shower with decorative surround
- _____ Removable clothing rod in shower
- _____ Skylight in shower
- _____ Toilet with foot flush

- _____ Queen-sized bed with bedspread
- _____ Under-bed storage
- _____ Wardrobe(s)
- _____ Full cab-over bunk with headboard (750-pound rating)
- _____ Bunk beds (300-pound rating; 31XL)
- _____ Blu-Ray™ player with HDMI® hookup

STANDARD DRIVING EQUIPMENT

- _____ Ford® E-450 chassis
- _____ Triton® 6.8L EFI V-10 305 HP engine with 420 LB-FT torque
- _____ 5-speed automatic TorqShift® series transmission with overdrive
- _____ Chevrolet® 4500 Chassis
- _____ 6L Vortec V8 342HP engine with 373 LB-FT torque
- _____ Hydra-matic 6-speed automotive transmission with overdrive
- _____ Ford Chassis – 14,500-pound GVWR, Chevy Chassis – 14,200-pound GVWR
- _____ Ford Chassis – 22,000-pound GCWR, Chevy Chassis – 20,000-pound GCWR
- _____ Ford Chassis – 7,500-pound hitch with 7-pin plug
- _____ Chevy Chassis – 5,000-pound hitch with 7-pin plug
- _____ JRIde
- _____ 120-amp alternator
- _____ 55-gallon fuel tank
- _____ Driver and passenger air bags
- _____ Power anti-lock brakes with power steering
- _____ Tilt steering wheel
- _____ Auxiliary start switch
- _____ A/C and cruise control
- _____ Remote-controlled, side-view mirrors
- _____ Power windows and door locks
- _____ Third brake light

REDHAWK SPECIFICATIONS

MODELS	DIMENSIONS				DRIVING FEAT.	TANKS (GALS.)		
	FLOORPLAN	EXTERIOR LENGTH	EXTERIOR WIDTH	EXTERIOR HEIGHT (WITH A/C)		INTERIOR HEIGHT	WHEEL BASE	FRESH
23XM	26' 3"	100"	11' 7"	84"	181"	32	34	32
26XD	28' 3"	100"	11' 6"	84"	181"	32	40	32
29XK	32' 0"	100"	11' 5"	84"	223"	32	40	32
31XL	32' 0"	100"	11' 5"	84"	223"	32	40	32
23X2	26' 3"	100"	11' 7"	84"	181"	32	34	32
26X1	28' 3"	100"	11' 6"	84"	181"	32	40	32

Gross Vehicle Weight Rating (GVWR): The maximum permissible weight of the motorhome, including the Unloaded Vehicle Weight (UVW) plus passengers, personal items, all cargo, fluids, options and dealer-installed accessories. The GVWR is equal to or greater than the sum of the UVW and the Cargo Carrying Capacity.

Gross Combined Weight Rating (GCWR): The maximum allowable combined weight of the motorhome used as a tow vehicle and the attached towed vehicle.

It is important for your safety and enjoyment that you are aware of the weights and tow ratings of the RV you select. Consult a competent advisor for questions or advice. Whether you are new to RVing or a veteran, get a feel for the performance of your RV before heading out on the roadways. When you tow a vehicle with your RV, you must drive differently than when you drive a single vehicle. Practice hooking up, driving, backing up and braking in a safe environment or seek out professional instruction. Jayco affixes a weight label to each RV which lists weight information for that vehicle. Refer to that label to verify the vehicle will meet your requirements. See specifications chart above.

OPTIONS

- _____ Hydraulic leveling jacks

LET'S JAYCO—AND ENJOY EVERY MILE.



We know that your family fun rides on our commitment to quality. So we go the extra mile to make products that last—and stand behind them longer than anyone in the business.

THE JAYCO DIFFERENCE

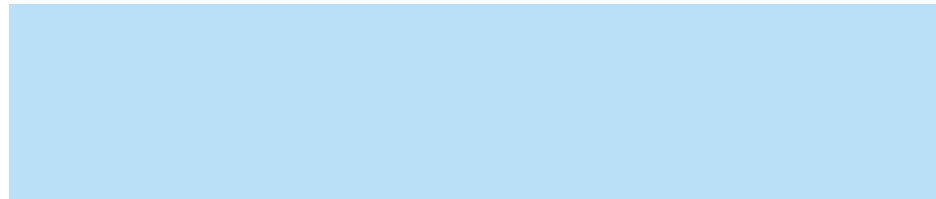
When you go with Jayco, you get one of the industry's strongest frames and rock-solid construction.

- 1. Seamless fiberglass front cap** for increased durability and leak protection
- 2. 750-pound overhead bunk capacity** offers nearly 250 pounds more than the industry average for greater safety and peace of mind
- 3. Integrated electric step** maximizes ground clearance and floor space
- 4. Integrated third brake light** is a Class C first that improves safety on the road
- 5. Seatbelts in every seating position** secure the most precious cargo



Generations of family fun.


Meet your Jayco Dealer



We work hard—so you can play hard. From finding the perfect Jayco for your family to providing flexible financing options and full-service support, we're here to help.

Follow Jayco



Jayco, Inc., P.O. Box 460, Middlebury, IN 46540, www.jayco.com  See dealer for further information and prices. All information in this brochure is the latest available at the time of publication approval. Jayco reserves the right to make changes and to discontinue models without notice or obligation. Photos in this brochure may show optional equipment and props for photography purposes. RVs built for sale in Canada may differ to conform to Canadian codes. ©2015 Jayco, Inc. 0615-60K Printed in U.S.A.

2

YEAR
WARRANTY

Our industry-leading, bumper-to-bumper limited warranty helps you travel with confidence.

For a copy of our 2-year limited warranty with full terms and conditions, please contact your local Jayco dealer.

FREE

ROADSIDE
ASSISTANCE

Travel worry-free with Jayco's Customer First Roadside Assistance program, yours at no cost during the first year of ownership. This program is offered through Coach-Net™, the country's largest RV emergency road service, and gives you immediate access to assistance.

eco advantage™

Jayco's long-term commitment to generations of family fun

After four years of increased efforts to eliminate waste, conserve energy and increase recycling, we've come a long way in building RVs that are not only better for your family—but also better for the planet. **Learn more at Jayco.com/EcoAdvantage**