

Sandpiper

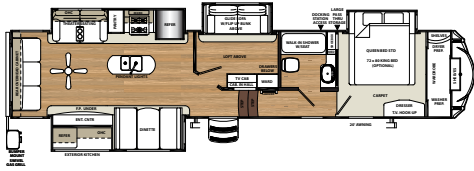
LUXURY FIFTH WHEELS



FIND US ON FACEBOOK

KEYWORD "SANDPIPER RV'S"





372LOK
ONYX DECOR



Thoughtful Design.

The 372L0K is designed for the family with children. Equipped with a theater seat and hide-a-bed sofa, LED HDTV, premium sound with and DVD player, this floorplan delivers the true comfort of home. Don't forget that mom and dad's retreat is the master suite at the other end of the unit, while the kids have an awesome loft and their own bunkroom.



Thoughtful Features.

HI RISE FAUCET

Sand Piper's Hi-Rise faucet with sprayer is both functional and stylish.

PENDANT LIGHTING

Our pendant lighting fixtures are just one more example of our commitment to true residential design.

CONVENIENT FEATURES

Our stainless steel digital microwave is a great way to heat up a cup of tea or make a quick snack.

RESIDENTIAL FINISHES

All Sand Piper kitchens feature Mocha accent crown molding over the cabinets.

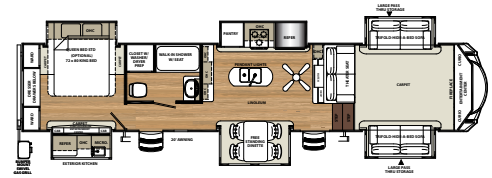


Standard glide sofa in bunk slides.

Residential Styling.

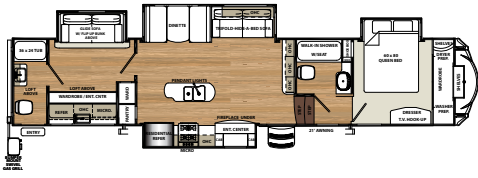
The 379FL0K leaves nothing out when it comes to entertainment. While you're inside enjoying the abundant living area, notice the seating is directly across from the LED HDTV. In the kitchen the storage is endless with more countertop space than ever offered before. All Sandpipers feature stainless steel appliances to complete the residential design of the interior.





379FLOK
BEIGE DECOR





383RBLOK

BOURBON DECOR



At Home on the Road.

The 383RBLOK is equipped with two bedrooms and two baths making it the ultimate family unit. Equipped with all the great features that come standard on every Sandpiper this great coach also has enough room for two families. The 383RBLOK comes standard with an outside kitchen making this coach a true crowd pleaser.



- A** 110V OUTLET AND CABLE OUTLET CONVENIENTLY LOCATED IN THE PASS-THRU STORAGE AREA
- B** OPTIONAL HYDRAULIC WIDE STANCE POWER FRONT JACKS
- C** SANDPIPER'S LIGHTED DOCKING STATION
- D** TINTED WIDOWS GIVE YOU PRIVACY AND PROTECT YOUR INTERIOR FROM UV RAYS

- E** HEATED AND ENCLOSED UNDERBELLY PROTECTS YOUR COACH AND IMPROVED AIRFLOW ALLOWS FOR A STURDIER RIDE
- F** INSULATED HEAVY DUTY SLAM LOCK BAGGAGE DOORS
- G** THE QUICK CONNECT SPRAY PORT IS GREAT FOR EASY CLEAN UP

- H** GEL COAT FIBERGLASS PROTECTS FROM UV RAYS AND PREVENTS YELLOWING AND CRACKING
- I** MY RV ONE - 5 FUNCTION CONTROL ALLOWS YOU TO DO EVERYTHING FROM OPERATING A LEVELING SYSTEM AND LIGHTS, TO MONITORING HOLDING TANK LEVELS

- J** CONTROL THE TEMPERATURE WITH THE DUAL ZONE DOMETIC® THERMOSTAT
- K** EURO STYLE QUADRUPLE ALUMINUM STEPS
- L** DRIP RAIL WITH EXTRA LONG DRIP SPOUTS HELP PREVENT BLACK STREAKING

Exterior Features



A



B



C



D



E



F



G



H



I



J



K



L

Interior Features



A



B



C



D



E



F



G



H



I



J



K



L

A CONTEMPORARY CEILING FAN.

B LED HDTV WITH PREMIUM SOUNDBAR AND DVD PLAYER

C CONTEMPORARY MASTER BEDROOM HEADBOARD WITH INTEGRATED LED LIGHTING

D HANDCRAFTED FASCIA GIVES THE SLIDE-OUT A DISTINGUISHED LOOK.

E PORCELAIN FOOT FLUSH TOILET, EASY TO USE, EASY TO CLEAN.

F THE TRI-FOLD HIDE-A-BED SOFA OFFERS YOU AND YOUR GUESTS MORE SLEEPING OPTIONS

G ENJOY THE WARMTH AND COMFORT OF THE ELECTRIC FIREPLACE.

H REAL WOOD DRAWERS ON SOFT CLOSE, FULL EXTENSION, BALL BEARING DRAWER GUIDES

I THEATER SEATING WITH FOOTRESTS, HEAT AND MASSAGE, LED LIGHTING AND CONSOLE STORAGE. (PER FLOORPLAN).

J THE SANDPIPER SIGNATURE PACKAGE INCLUDES STAINLESS STEEL APPLIANCES.

K MOCHA ACCENTED CROWN MOLDING GIVES THE SANDPIPER KITCHEN A TRULY RESIDENTIAL FINISH.

L EXCLUSIVE DENVER MATTRESS

STANDARDS AND OPTIONAL FEATURES

EXTERIOR FEATURES

- Color match high gloss gel coated colored exterior fiberglass
- Painted two tone aerodynamic fiberglass front cap with improved turning radius
- Docking station: easy winterization, hot and cold spray port, black tank flush, pull valves for tanks
- Enclosed and heated dump valves
- Large tinted windows with 80/20 UV prohibitor
- Euro style quad aluminum step
- "One Touch" Dometic® electric awning with LED light strip
- Power front jacks with spring loaded snap pins
- 16" Radial tires-E Rated
- Automotive-style fender skirts
- Hitch light
- Exterior kitchen (per floorplan)
- Porch light with interior switch
- 30 lb. double LP tanks with auto change over
- Roof ladder
- 2 LED lighted exterior speakers
- Rain gutters with extra long drip spouts (prevents black streaking)
- Insulated heavy duty slam lock baggage doors
- Exterior foldable grab handle
- Unobstructed drop frame pass through storage area with cable jacks and 110V outlet
- 2 spray ports with 25' hose (one on each side)
- Upgraded aluminum rims
- 7,000 Lb. axles
- Friction hinge entry door

INTERIOR FEATURES

- 84" interior height with 6'4" slide heights
- Stainless steel appliances
- Beauflor® rustic wood plank linoleum
- Decorative backsplash

- Three color coordinated interiors (Onyx, Bourbon, Beige)
- Soft close full extension drawer glides
- Hidden hinged cabinet doors with soft close full extension drawer glides
- Stainless steel double bowled under mounted kitchen sink
- Washer/Dryer prep
- Knotty alder handmade cabinetry with screwed lumber core stile construction
- LED lighting throughout
- Residential countertops
- Recessed residential lighting
- Colored shower surround with etched tile pattern
- Upgraded adjustable shower head with shelf
- Theater seating with heat/massage plus accent LED lighting and swivel TV trays (per floorplan)
- Accent paneling in slideouts
- Accent lighting over dinette
- LED lighting at islands
- Nightlights on fifth wheel steps
- Walk-in shower with seat (most models)
- Mocha accent crown molding over kitchen cabinets
- Extra large picture windows throughout
- Vented side windows in slideouts
- TV antenna with booster
- Solid wood drawer fronts with birch sides
- Upgraded raised panel cabinet doors with designer rails
- Bedroom slideout fascia
- LED lighted headboard
- Teddy Bear® bunk mats
- 40" flat screen LED HD TV
- Premium soundbar with built in flush mounted DVD player
- Designer window treatment accented per decor
- 9 cu. ft. stainless refrigerator
- Ceiling fan
- Tri-fold hide-a-bed sofa
- Glider sofa with USB/110 outputs (standard in all off door bunk slides)

- Residential stain resistant carpet
- Quilted bedspread
- Trash receptacle in kitchen

APPLIANCES/SYSTEMS

- 9 Cu. Ft. stainless refer
- 15K A/C with Quick Cool
- Dual zone thermostat for living room and bedroom A/C
- Floor ducted 35,000 BTU furnace
- OTR stainless steel microwave
- Three burner high output range with oven
- Interior monitor panel for holding tanks
- Flush floor hydraulic slideouts (per floorplan)
- Dual battery prep
- Satellite and cable hookup with RG-6 cable for high quality picture
- Porcelain foot flush toilets
- 10 Gal. DSI water heater
- 65 Amp converter
- EZ Breeze® power fan in bathroom

CONSTRUCTION

- Welded aluminum-framed, vacuum bonded laminated superstructure
- Drop frame
- 2" x 3" floor joists 12" on center
- 5/8" tongue & groove plywood floor decking
- 3/8" roof decking (full walk-on roof)
- Cambered powder coated frame with rust prohibitor
- Fully enclosed heated underbelly
- 5" truss roof rafters
- R-10E sidewall construction
- Laminated sidewalls
- Laminated slide-out walls

POPULAR OPTIONS

- Roto Flex hitch pin
- Electric rear jacks
- Tri-fold hide-a-bed with hinged bunk overhead (bunk slides)

- Recliners IPO theater seating (where available)
- 6 point hydraulic leveling system
- Solid surface countertops in kitchen
- Free-standing dinette with 4 chairs
- Washer and dryer (per floorplan)
- Sofa IPO bottom bunk (per floorplan)
- 15k air conditioner-bedroom
- Fantastic fan with rain sensor (bunk room, kitchen, living room, bathroom, half bath)
- 12 Volt heated holding tanks
- Equaflex® equalizer system
- Beauflor® tile look linoleum
- Central vacuum
- R-38E insulation
- Slide room awnings (all slides)
- King Bed (Where available)

FOR YOUR SAFETY

- Smoke alarm
- Fire extinguisher
- Breakaway switch (battery hook-up required)
- Dead-bolt lock on entry door
- LP/CO2 gas detector
- Fire escape windows

POLAR TECH PACKAGE

[OPTIONAL]

- Thermal pane windows
- Heated holding tanks
- R-38E roof & all floors insulation
- 40K BTU furnace

PREMIUM PLUS PACKAGE

[LIMITED TIME OFFER]

[OPTIONAL]

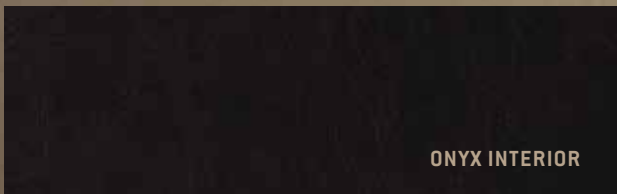
- 20 cu. ft. stainless French door residential refer with 1,000 watt inverter and battery disconnect
- Premium Corian solid surface kitchen countertops
- Wide stance hydraulic landing gear
- Roller shades throughout

- Euro Style Quad Aluminum Steps (Standard both main and secondary entry doors)
- Furrion Oven with LED knobs
- Back Up Camera Prep
- My RV One (5 function electronic control pad)

SANDPIPER SIGNATURE PACKAGE

- 9 Cu ft stainless refer
- Residential stain resistant carpet
- Stainless appliance package
- Slam lock baggage doors
- Denver pillowtop mattress
- 15K air conditioner w/prep for 2nd A/C
- 30" OTR microwave
- Residential pullout kitchen faucet
- Backsplash
- 10 Gal. G/E water heater w/DSI
- Soft close residential drawer and cabinet doors
- 16" Spare tire kit
- Docking station
- Aluminum wheels w/7K axles
- High gloss color matched gelcoated Fiberglass exterior
- Washer/dryer prep
- 40" Flat screen television
- Water filter system
- Premium sound bar with built in DVD player
- Rustic wood Beauflor™ flooring
- EZ breeze power fan in bathroom(s)
- Aerodynamic two tone painted front Cap
- Tri fold hide-a-bed sofa
- "One touch" Dometic electric awning with LED light strip
- LED interior lighting throughout

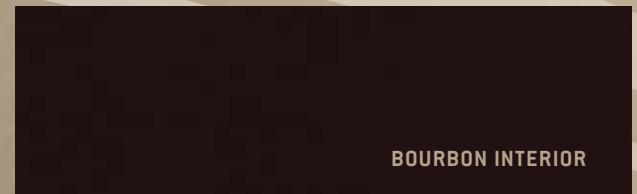
DECOR OPTIONS



ONYX INTERIOR



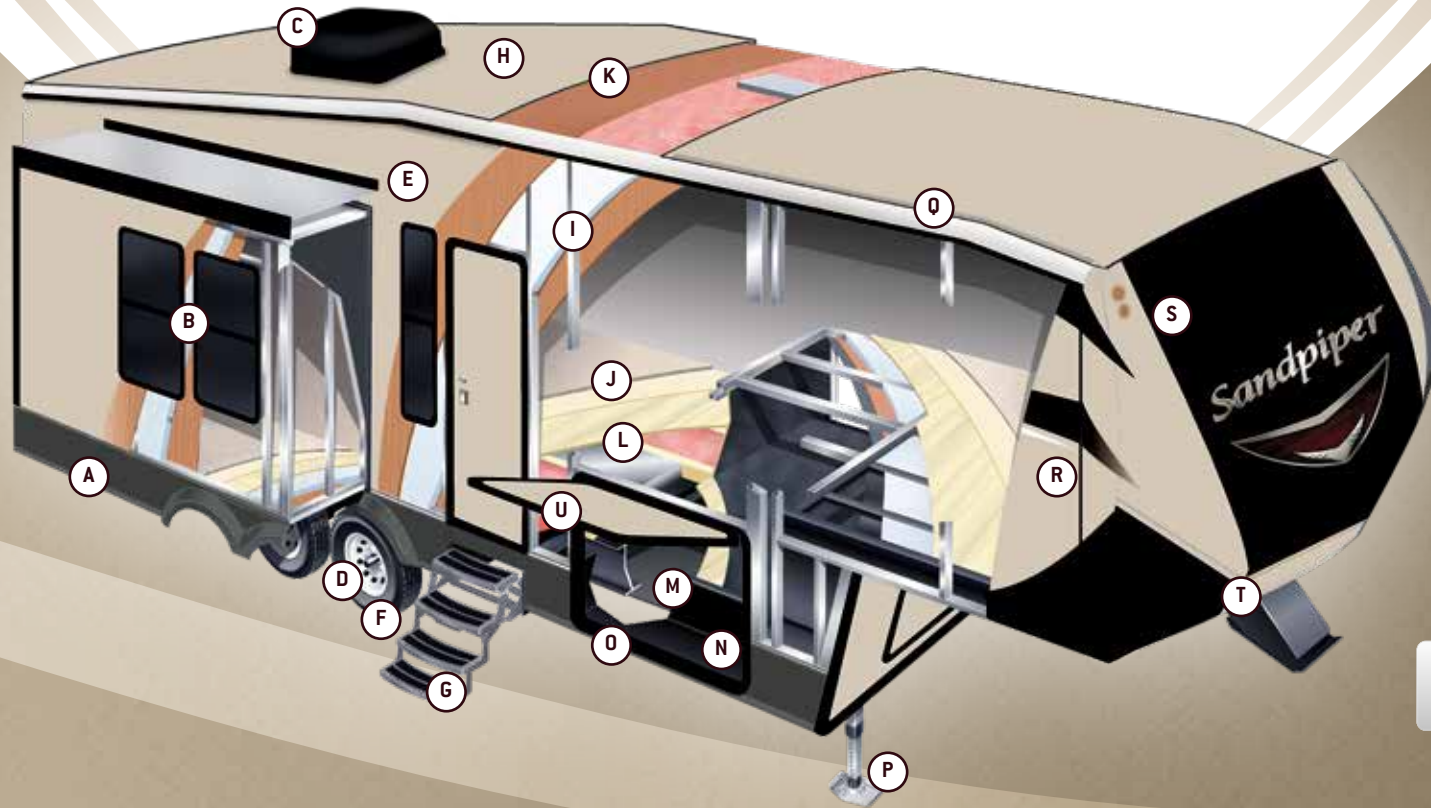
BEIGE INTERIOR



BOURBON INTERIOR

BUILT TO LAST

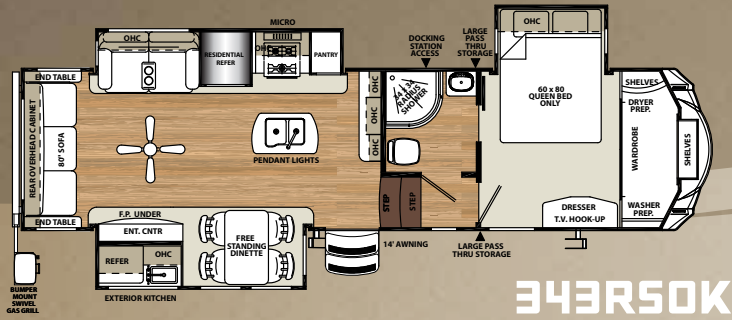
The Sandpiper is built to last using only the best materials to ensure that your coach is in it for the long haul. Careful engineering, well appointed craftsmanship and an uncompromising sense of pride go into every fifth wheel that we produce. Rest assured that your Sandpiper is built for luxury living.



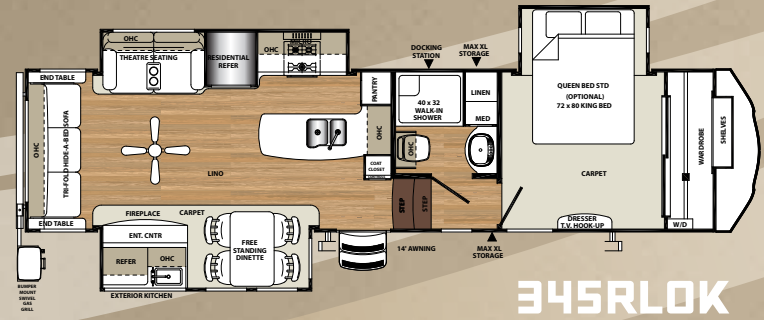
SEARCH YOUTUBE FOR
A VIDEO FEATURING
OUR CONSTRUCTION
PROCESS

SOLID CONSTRUCTION

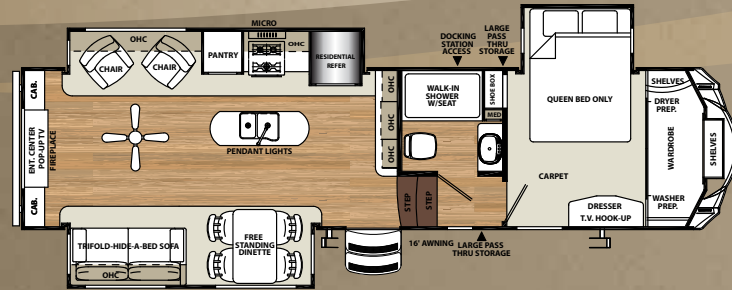
- | | | | |
|--|--|---|---|
| A ROLLED ALUMINUM SIDE SKIRTING | G EURO STYLE QUAD ALUMINUM ENTRY STEPS | L 5/8" TONGUE AND GROOVE PLYWOOD FLOORING | Q SLEEK RADIUS ROOF |
| B TINTED SAFETY GLASS WINDOWS (80%) | H COLOR MATCHED SEAMLESS RUBBER ROOF (12 YR. WARRANTY) | M ENCLOSED, HEATED UNDERBELLY | R PAINTED COLOR MATCHED HIGH GLOSS GEL-COATED FIBERGLASS EXTERIOR |
| C DUAL ZONE DUCTED 15K BTU AIR CONDITIONING | I 2" BLOCK FOAM INSULATION | N I-BEAM POWDER-COATED FRAME W/ RUST INHIBITOR | S TWO TONE PAINTED GEL-COAT FIBERGLASS FRONT CAP (STANDARD) |
| D DEXTER AXLES WITH AUTO ADJUST BRAKES | J DELUXE STAIN RESISTANT CARPET WITH PADDING | O DROP FRAME | T IMPROVED FRONT CAP FOR SHARPER TURNING RADIUS |
| E LAMINATED VACUUM BONDED ALUMINUM SIDEWALLS | K 3/8" ROOF DECKING (FULL WALK-ON ROOF) | P POWER FRONT JACKS WITH QUICK RELEASE SNAP PINS (HYDRAULIC OPTIONAL) | U INSULATED SLAM LOCK BAGGAGE DOORS |
| F 16" E-RATED RADIAL TIRES (STANDARD) | | | |



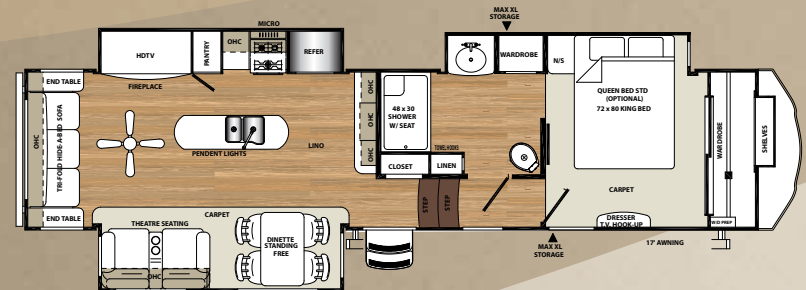
343R50K



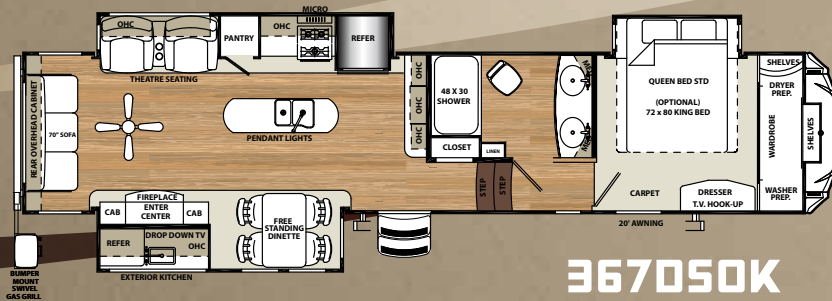
345R10K



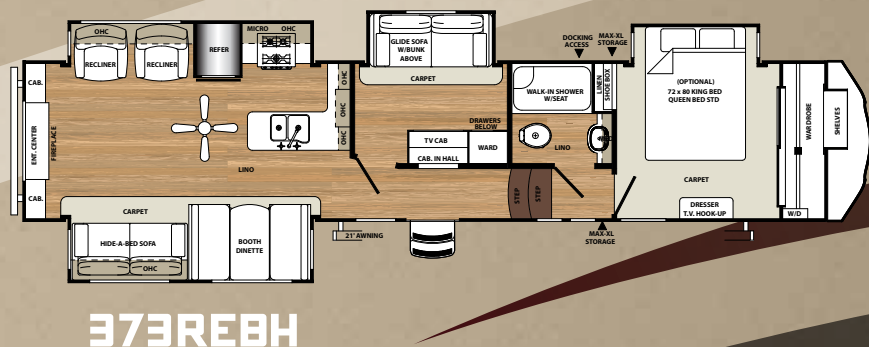
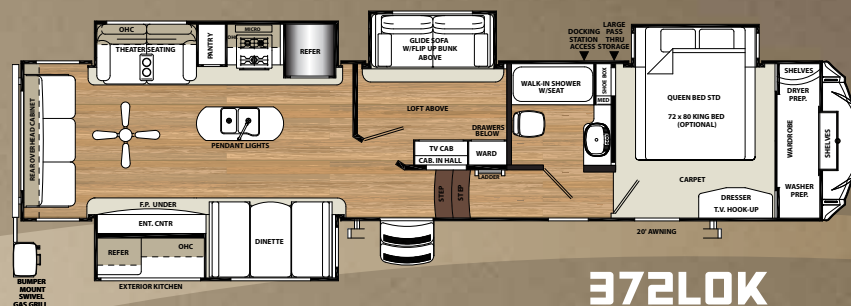
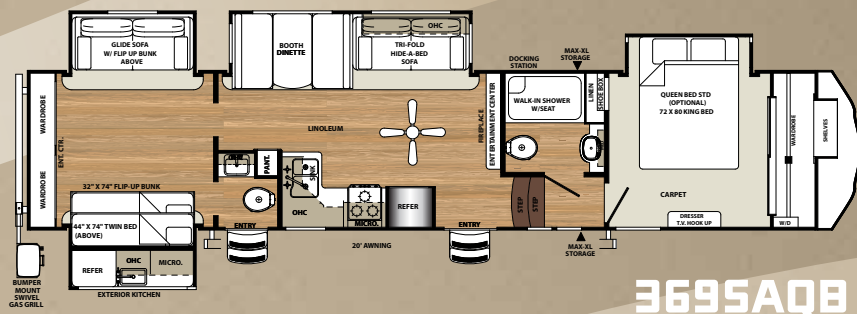
354RET



357RE



367050K



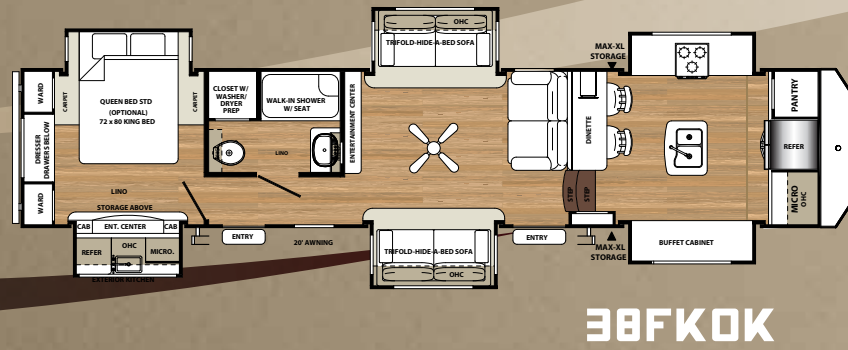
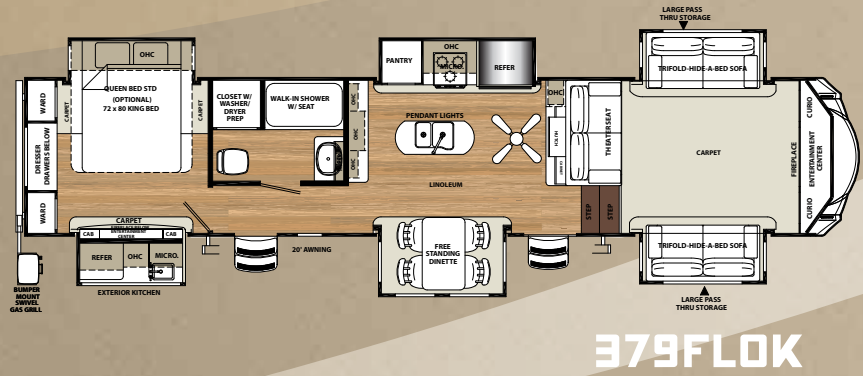
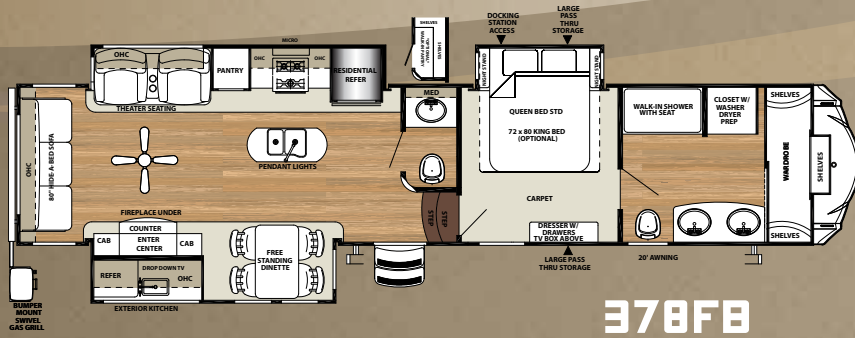
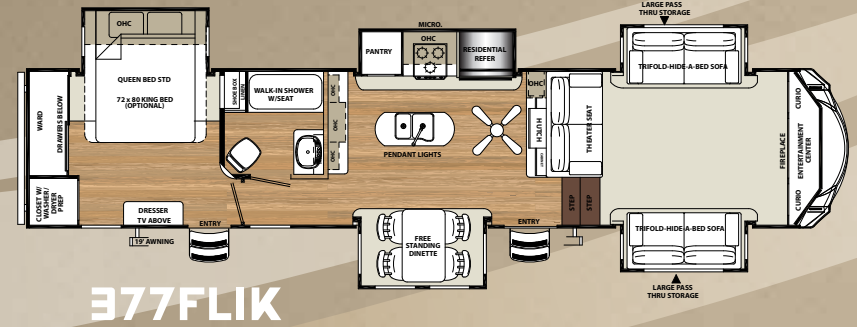
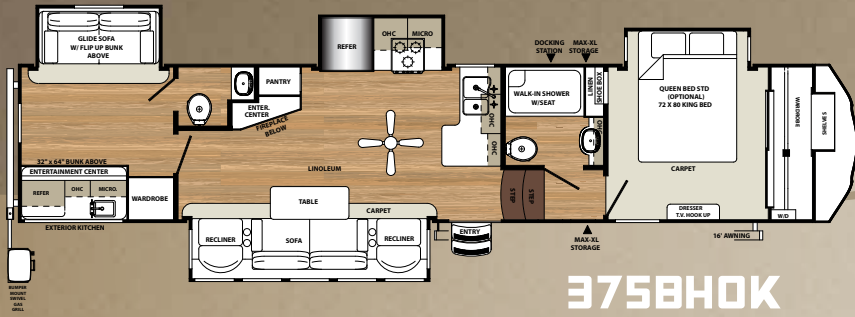
SPECIFICATIONS

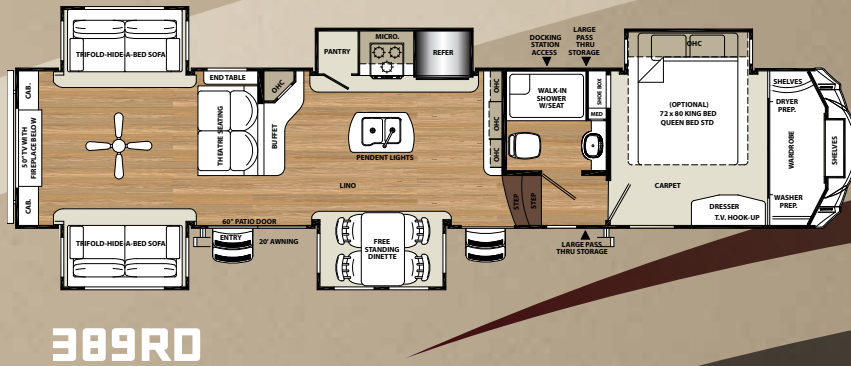
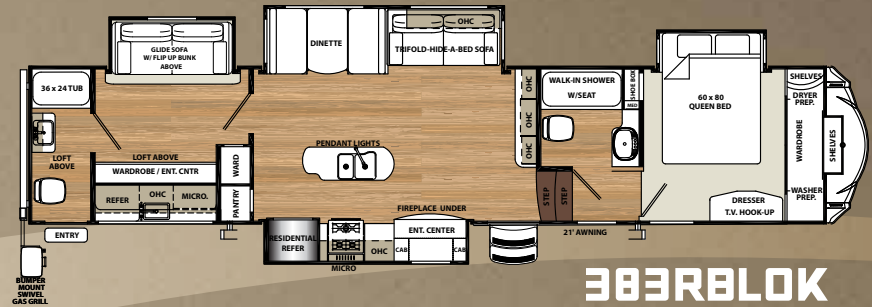
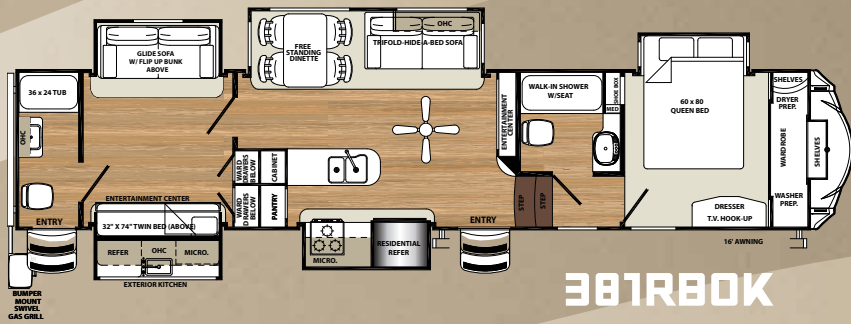
MODEL	343RSOK	345RL0K	354RET	357RE	367DSOK	369SAQB	372LOK	373REBH
HITCH	2,167	2,237	2,080	2,319	2,415	2,197	2,474	1,865
UVW	10,803	10,883	11,172	11,573	12,461	13,103	12,962	12,690
GVWR	15,500	15,500	15,500	15,500	15,500	15,500	15,500	15,500
CARGO	4,697	4,617	4,328	3,927	3,039	2,397	2,538	2,810
LENGTH	33'7"	35'3"	34'11"	37'11"	40'5"	41'2"	41'9"	41'6"
HEIGHT	13'2"	13'2"	13'2"	13'2"	13'2"	13'2"	13'2"	13'2"
AWNING	14'	14'	16'	20'	18'	20'	20'	21'
GRAY	82	134	104	104	134	134	134	104
BLACK	52	52	52	52	52	104	52	52
FRESH	60	60	60	60	60	60	60	60

Sandpiper



PLEASE SEE BACK COVER FOR MORE INFORMATION REGARDING WEIGHTS.





SPECIFICATIONS

MODEL	375BHOK	377FLIK	378FB	379FLOK	38FKOK	381RBOK	383RBLOK	389RD
HITCH	2,180	2,235	2,096	2,495	2,256	2,519	2,184	2,384
UVW	12,669	12,283	12,455	12,819	12,823	13,131	13,469	13,042
GVWR	15,500	15,500	15,500	15,500	15,500	15,500	15,500	15,500
CARGO	2,831	3,217	3,045	2,681	2,677	2,369	2,031	2,458
LENGTH	41'10"	40'7"	41'3"	41'5"	41'8"	41'8"	42'2"	41'8"
HEIGHT	13'2"	13'2"	13'2"	13'2"	13'2"	13'2"	13'2"	13'2"
AWNING	16'	21'	20'	20'	20'	16'	15'	20'
GRAY	149	134	134	134	134	134	127	104
BLACK	104	52	104	52	52	82	82	52
FRESH	60	60	60	60	60	60	60	60

Sandpiper



PLEASE SEE BACK COVER FOR MORE INFORMATION REGARDING WEIGHTS.

GVWR (Gross Vehicle Weight Rating) - is the maximum permissible weight of the unit when fully loaded. It includes all weights, inclusive of all fluids, cargo, optional equipment and accessories. For safety and product performance do NOT exceed the GVWR.

GAWR (Gross Axle Weight Rating) - is the maximum permissible weight, including cargo, fluids, optional equipment and accessories that can be safely supported by a combination of all axles.

UVW (Unloaded Vehicle Weight)* - is the typical weight of the unit as manufactured at the factory. It includes all weight at the unit's axle(s) and tongue or pin and LP Gas. The UVW does not include cargo, fresh potable water, additional optional equipment or dealer installed accessories.

*Estimated Average based on standard build optional equipment.

CCC (Cargo Carrying Capacity)** - is the amount of weight available for fresh potable water, cargo, additional optional equipment and accessories. CCC is equal to GVWR minus UVW. Available CCC should accommodate fresh potable water (8.3 lbs per gallon). Before filling the fresh water tank, empty the black and gray tanks to provide for more cargo capacity.

** Estimated average based on standard build optional equipment

Each Forest River RV is weighed at the manufacturing facility prior to shipping. A label identifying the unloaded vehicle weight of the actual unit and the cargo carrying capacity is applied to every Forest River RV prior to leaving our facilities.

The load capacity of your unit is designated by weight, not by volume, so you cannot necessarily use all available space when loading your unit.

All information contained in this brochure is believed to be accurate at the time of publication. However, during the model year, it may be necessary to make revisions and Forest River, Inc., reserves the right to make all such changes without notice, including prices, colors, materials, equipment and specifications as well as the addition of new models and the discontinuance of models shown in this brochure. Therefore, please consult with your Forest River dealer and confirm the existence of any materials, design or specifications that are material to your purchase decision.



Sandpiper



PRE-DELIVERY INSPECTION FACILITY

20,000 square feet of quality assurance. The bare essentials for a premium product. This state-of-the-art facility gives immediate daily feedback to production for quality assurance in every unit built.

CUSTOMER SATISFACTION



www.ForestRiverBuyLocal.com

24/7 EMERGENCY ROADSIDE ASSISTANCE

For a worry-free ownership experience

Forest River includes one year of Coach-Net RV Technical & Roadside Assistance with each RV purchase. Whether new to the RV lifestyle or an experienced RV enthusiast, Forest River owners have 24/7 access to technical, operational and emergency road service coverage throughout the US & Canada. Coach-Net's fast, dependable service is just a phone call away.

Coach-Net[®]
RV Technical & Roadside Assistance



FREE MEMBERSHIP
to Forest River Owners' Group

www.forestriverfrog.com



Learn More

Scan this barcode using a QR Reader on your smart phone to learn more about Forest River.



A Berkshire Hathaway company.

Forest River, Inc.
55470 C.R. 1, Elkhart, IN 46515
(574) 389-4600
www.forestriverinc.com/Sandpiper
www.forestriveraccessories.com

YOUR LOCAL SANDPIPER DEALER



Find us on Facebook
keyword "Sandpiper RV's"