

2006

*Alfa*TM
Gives You More!



See You At Alfa
Founder



See You At Alfa
Scepter



See You At Alfa
Gold



Now there are three!

Inside:

One Great Floorplan	2
Freightliner XC Chassis	3
Foundation & Construction	4
Great Home & Drive	5
Climate Control	6
Founder	7 – 8
See Ya!	9 – 10
Gold	11 – 12
Floorplans & Options	13 – 14
Standard Features	15 – 17
Warranty	18

From the desk of Johnnie Crean

When we introduced the Alfa See Ya!, it became an overnight sensation. I remember my dad taking out one of the very first units. He was so proud of me and what Alfa had accomplished. He drove it cross country from California to New York, arriving there on September 13, 2001. Parked across the harbor at Liberty Harbor RV Park, he could see the Statue of Liberty on his right and the plumes of smoke from the Twin Towers on his left. In his words, "It was America's worst moment while I was in the perfect example of the best America had to offer." America recovered and the See Ya! led the way, becoming number one in sales for most of its markets.

As an avid RV'er, the See Ya! was designed by me, for me, but I'm a gadget and electronics kind of guy and wanted even more; so I designed the See Ya! Gold. It's for those who want it all but don't want to spend a lot for it. Again we had a hit. My dad took one of those out too, and while he liked it, he kept saying that we should simplify its design for people who didn't want lots of gadgets and stuff.

So, with my dad's help, we began working on what my dad considered the "perfect coach". Over the course of three years we built and tested five prototypes before we came up with the coach that my dad would put his name on. And that brings us to the Founder — the same incredible storage and more but designed for a quieter, simpler lifestyle.

Alfa has given you three great motorhomes to choose from: each one, the best value for your money. Whatever your lifestyle, there's a See Ya! for you.

Johnnie Crean

"From the beginning an Alfa RV was designed by RV'ers for RV'ers. With three Alfa motorhomes to choose from, we have met the budget, needs and wants of every avid motorhome owner."

Something for Everyone

Everything you need...

Introducing the all new See Ya! Founder. Built on the foundation of the Alfa See Ya!, the Founder caters to those who prefer a simpler lifestyle—less electronics and gadgets—just all the basics to make your RV experience the best there is.

John Crean (founder of the largest RV company there ever was) and son, Johnnie Crean (founder of Alfa), designed the Founder together, using their collective knowledge and experience to create the most well thought out motorhome on the market today — at an incredibly low price.



Everything you want...

The original Alfa See Ya! is still one of the most sought after motorhomes in America. Fully equipped for both comfort and luxury, the See Ya! is a must for full-time RV'ers. From its incredible entertainment package, operated by a single remote, to its CAT 350 hp engine, the See Ya! is equipped with a whole list of standard features that would cost you thousands more if you bought from someone else.



Everything you dreamed about...

The most fully-equipped motorhome to be had at any price is available to you for a most reasonable price. Equipped for complete luxury and livability, the See Ya! Gold has it all: Cummins 400 HP engine, 150 gallon fuel tank, hand-held computer with GPS, heated floor tiles, TwinTemp heating system and much, much more. You could pay more for another motorhome, but you would still get less.



Freightliner XC Chassis

Founder

FRONT AXLE

Meritor Front Axle I-beam Wide Track
Capacity: 10,500 Lbs

REAR AXLE

Meritor Rear Axle
Capacity: 19,000 Lbs.

BRAKES

Full Air Over Drum 15" x 4" Front
& 16.5" x 7" Rear
With Auto-Slack Adjusters And ABS

CHASSIS

Freightliner XC Straight Rail Chassis
G.V.W.R. - 29,500#

ENGINE

Caterpillar C-7 300 Hp @2400 rpm
Turbocharged Aftercooled
7.2l Diesel Engine

ENGINE BRAKE

Turbo Exhaust Retarder From PAC

FOOT PEDALS

Stationary Foot Pedals

FUEL TANK

90 Gallon Fuel Tank

SUSPENSION

Trailing Arm
Newway Air Suspension

TIRES

255/80R22.5 Size Tires - Load Range G

WHEEL BASE

36' - 228" / 40' - 252"

WHEEL CUT

50 Degree Wheelcut
On Front Steering In Both Directions

WHEELS

Steel With Polished Hub Caps

See Ya!

FRONT AXLE

Meritor Front Axle I-beam Wide Track
Capacity: 12,500 Lbs

REAR AXLE

Meritor Rear Axle
Capacity: 20,000 Lbs.

BRAKES

Full Air Over Drum 15" x 4" Front
& 16.5" x 7" Rear
With Auto-Slack Adjusters And ABS

CHASSIS

Freightliner XC Raised Rail Chassis
G.V.W.R. - 32,000#

ENGINE

Caterpillar C-7 350 Hp @2400 Rpm
Turbocharged Aftercooled 7.2l

ENGINE BRAKE

Turbo Exhaust Retarder From PAC

FOOT PEDALS

Stationary Foot Pedals

FUEL TANK

100 Gallon Fuel Tank

SUSPENSION

Trailing Arm
Newway Air Suspension

TIRES

275/80R22.5 Size Tires - Load Range G

WHEEL BASE

36' - 228" / 40' - 252"

WHEEL CUT

50 Degree Wheelcut
On Front Steering In Both Directions

WHEELS

Steel With Polished Hub Caps

See Ya! Gold

FRONT AXLE

ZF Independent Wishbone
Capacity: 14,320 Lbs

REAR AXLE

Meritor Rear Axle
Capacity: 20,000 Lbs.

BRAKES

Front-full Air Over 17"
Disk / Rear-full Air Over Drum
With Auto-Slack Adjusters And ABS

CHASSIS

Freightliner XC Raised Rail Chassis
G.V.W.R. - 34,320#

ENGINE

Cummins ISL 400hp @ 1900 Rpm
Turbocharged Aftercooled
8.9l Engine

ENGINE BRAKE

C-brake From Jacobs

FOOT PEDALS

Adjustable Foot Pedals

FUEL TANK

150 Gallon Fuel Tank

SUSPENSION

ZF IFS Independent
Air Ride Suspension

TIRES

275/80R22.5 Size Tires - Load Range H

WHEEL BASE

40' - 252"

WHEEL CUT

56 Degree Wheelcut
On Front Steering In Both Directions

WHEELS

Aluminum With Valve Extensions

Common

AIR CONDITIONING COMPRESSOR
R-134A AND CONDENSER

AIR CLEANER
RESTRICTION INDICATOR

AIR COMPRESSOR W/
HEATED AIR DRYER

ALLISON 3000 MH 6 SPEED
AUTOMATIC TRANSMISSION W/
PUSH BUTTON SHIFT CONTROL

160 AMP ALTERNATOR

2 ALLIANCE 12V BATTERIES

DUAL AIR TANKS WITH
AUTOMATIC MOISTURE EJECTORS

CRUISE CONTROL

DAYTIME RUNNING LIGHTS

FUEL / WATER SEPARATOR

HYDRAULIC 4 POINT LEVELING JACKS

MULTIPLE MODULE DATA
COMPUTER INFORMATION
CENTER WITH LCD DISPLAY

NEWAY AIR RIDE SUSPENSION
WITH MANUAL DEFLATION VALVE
AND SACHS SHOCK PACKAGE

REAR MOUNTED CROSS FLOW
1050 SQUARE-INCH RADIATOR

TRAN-SYND TRANSMISSION FLUID

1000 WATT /
115 VOLT BLOCK HEATER

A Great Drive

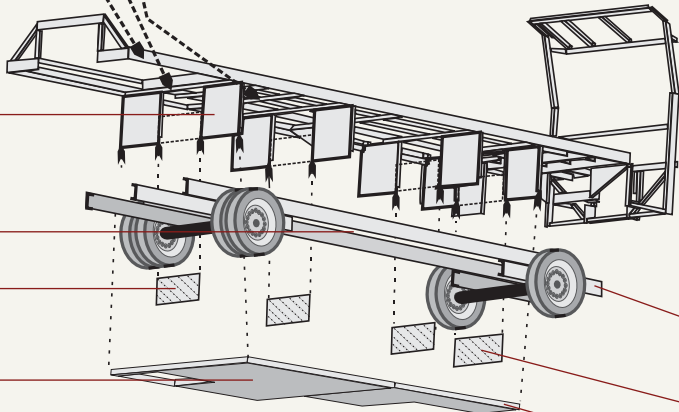
Perimeter Frame

1. The perimeter frame is made using 6-3/8" steel angle with C-channel welded inside.
2. 2" x 2" box tube is welded from side to side in the perimeter frame.
3. 3" Z-bar is welded running front to back on top of the box tube.

Front Cut Away View of Main Floor



The Union of Frame & Chassis

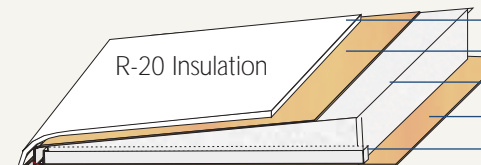


Lock Box Assembly

4. Bulkheads are welded in pairs from front to back of frame.
5. The frame is lowered over chassis with bulkheads running along both sides.
6. A steel plate is welded between each pair of bulkheads joining them together surrounding the FREIGHTLINER® chassis.
7. 3" thick, steel framed, foam filled, vacuum bonded basement floor is then welded to bottom of bulkheads.

Roof Construction

1. TPO
2. 3.4mm Luan plywood cap.
3. Ultra light, high density composite foam core.
4. Interior décor panel with carpet overlay.
5. Extruded aluminum welded superstructure.



Wall Construction

1. Interior décor panel.
2. Aircraft type Heliarc welded aluminum frame.
3. 2" Block foam insulation.
4. 3.4mm Luan plywood.
5. High-tech lightweight gel-coated Filon fiberglass.

Vacuum Bonded

The walls & roof materials are placed on a vacuum table in layers. Adhesive is sprayed between each layer. High vacuum pressure is applied to structure as adhesive cures. Walls & roof become a one piece composite with no seams or joints for weakness to develop.

2-3/8" Thick
R-11 Insulation

3/4" Marine grade plywood is
screwed and glued to top of Z-Bar
& Perimeter frame.

A Solid Foundation

Alfa's unique Lock-Box (patent pending) frame/chassis design is created using steel bulkheads, a 3" steel framed vacuum bonded basement floor, and a 6 3/8" thick perimeter frame. This exclusive design reduces road noise, provides a vault-like basement, and a floor so strong it reduces twisting, flexing and bump steer.

Quality Construction

A Great Home and a Great Drive

With the See Ya!'s Lock Box design, 2 3/8" thick walls, and one piece composite roof, it is the strongest coach on the road today. This strong box set atop the industry-leading Freightliner chassis gives you the best drive and quietest ride in the Diesel market.

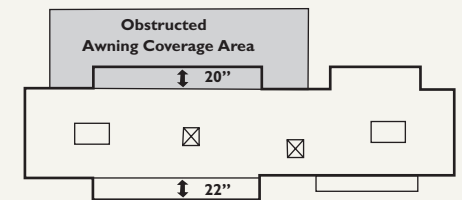
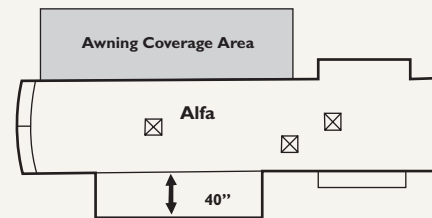


Other manufacturers rely completely on the chassis rails to provide the rigidity and strength in their foundation. By only having an unsupported horizontal plane, their coaches ride like boats as they twist and flex on the springs. The twisting and flexing of the coach lifts and pushes the axles, thus turning both the rear and front wheels, creating what is called "bump steer," making the coach harder to drive. ALFA's Lock-Box frame/chassis design solves this problem keeping the See Ya! rigid regardless of the road conditions.

One Large versus Too Small

The benefits of a single large livingroom slide-out room

- Open patio entertainment area
- Open storage compartments on curbside of coach
- Easy access to basement storage compartments
- Obstructed patio entertainment area
- Mixed side location of open storage and utilities
- Obstructed access to basement storage compartments



- All utilities are on the roadside of the coach for servicing when necessary and the open storage compartments are on the entry door side of coach for safe and easy access.
- Alfa's large single main slide-out room at 42" deep gives you the livability of two slide-outs without the patio interference that two slide-outs cause.
- A single slide-out also leaves the basement storage compartments easy to access without the slide-out room above them.

A Great RV

Here are more standard features:

- 35,000 BTU furnace.
- Dual Pane windows.
- Electric main awning.
- Slide out covers and/or window awning package.
- Electronic controlled dash heating & A/C system with defroster.
- 2 3/8" thick R-11 walls.
- Deluxe ceiling fan.
- Massive vault - like climate controlled basement storage.
- Fan-Tastic™ fan.
- Exhaust fan in bathroom.
- Sun visors - electric and manual.

Alfa's Exclusive 27,000 BTU Basement Air Conditioning

Hot air is drawn into the upper air return duct, through the return line, and into the basement air conditioner. It is then converted into refrigerated air and blown into the main 3" x 17" in-floor duct line. From there it is distributed throughout the coach.

Whisper-Quiet™ System

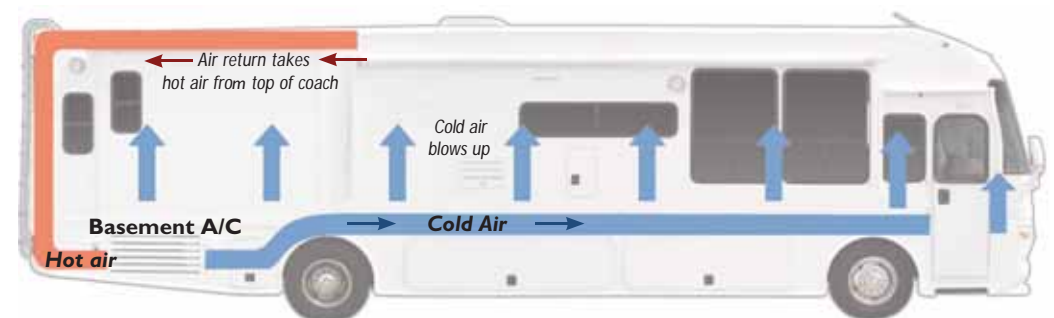
The air conditioner is installed in the chassis, keeping noise and vibration often associated with roof mounted air conditioners outside the unit, which leaves the interior quiet and cool.

Easy to Operate

Just set the combination cooling/heating thermostat the same way you would on your residential system at home.

Basement Air Conditioning

Our superior basement air conditioning cools 40% more efficiently than roof-mounted units. Add that to our 2 3/8" thick walls for incredible R-value insulation. The See-Ya! has R-11 walls and R-20 roofs and floors.





Model 1006 shown in Metro décor

AM/FM CD clock radio in Bedroom

There's room for everything in your Founder bedroom

The Founder bathroom is spacious, comfortable and functional

A Leather Euro chair with footstool is standard



See Ya! Founder

Enjoy complete entertainment with your DVD/VCR. Watch movies in your living room or bedroom. Sirius satellite radio - 100's of channels to listen to no matter where your travels take you. Get reception almost anywhere!

27" Overhead TV allows everyone to enjoy the game or your favorite movie.

Relax in your Founder bedroom suite. There's storage everywhere - overhead, in the nightstands and in the fully accessible wardrobe.



Spacious 22 cf, side-by-side residential refrigerator/freezer with in-door ice maker and water dispenser. There's room for everything in your Founder!

Everything is at your fingertips at the Founder control center. A convenient lift-up dash pod allows for easy access. Electric and manual sun visors are among the driver conveniences that are standard.

20" bedroom LCD TV is standard in your Founder bedroom. You never have to leave your room!

Our pass-through wastebasket with interior/external access is a favorite of Alfa owners and the envy of those who own other manufacturers' coaches.



Model 1004 shown in tuscaný décor

Complete comfort in your luxury See Ya bedroom. It comes standard with a 20" TV & DVD player.

A one-piece shower enclosure, porcelain toilet, beautiful fixtures are all part of your See Ya bathroom.

A huge wardrobe along with drawers underneath allow for summer and winter clothes. You can bring it all in your See Ya!



See Ya!



Your total entertainment package includes a DVD/VCR player, Direct TV Satellite receiver, Sirius satellite radio, 13" Galley TV, 19" outside patio TV, 20" bedroom TV, all controlled with your touch screen Universal remote. No more misplaced remotes or programming your remote – it comes pre-programmed!



12 cubic foot, 4-door refrigerator/freezer with ice maker.



A built-in vanity and 2nd bedroom slide-out allow for a 20" LCD TV, a built in DVD player, and extra room for getting ready.



1. Our newly redesigned dash board and driver arm rest locates everything you need and more right at your fingertips: Sirius Satellite radio, new hand-held computer with wireless keyboard, cell phone capability and GPS navigational system, back-up camera monitor, electric sun shades and compass are just a few of our fabulous features.

2. Our spacious interiors are unmatched in beauty and livability and with 50% more window view than any other brand. The outdoor scenery is visible from any location in the coach.

3. Our huge shower with height adjustable style body care dispenser, new bathrobe hooks and three towel racks makes bathing a luxury.

4. The elegant master suite is designed for your ultimate comfort and livability with full-sized cedar lined closet, all new road side vanity slide-out room, queen sized deluxe innerspring mattress, 20" LCD TV, DVD player, DishPVR Satellite receiver, solid surface nightstand tops, designer duvet with matching shams and abundance of windows for light and ventilation.



Gold

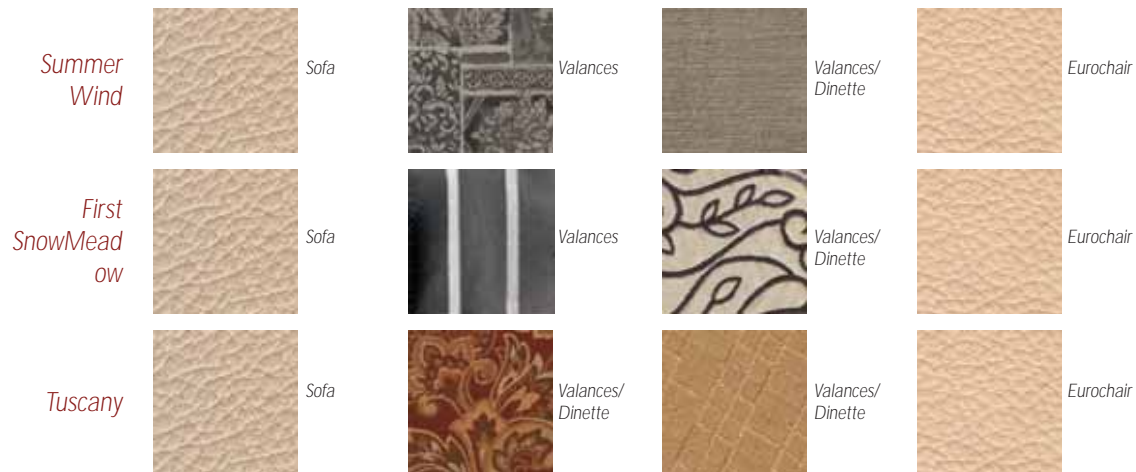
5. In-dash stereo with 1000 watt amplifier, eight speakers, Sirius satellite radio and 6 disc CD changer. 6. 3 Burner stove with sealed burners, stove cover, and 21" oven. 7. Handy keyless entry with remote control. 8. New hand-held computer with wireless keyboard, cell phone capability and GPS navigational system. 9. Side-by-side 14 CF 2-door refrigerator/freezer with ice maker. Halogen lighting in both fresh food and freezer area, flip up shelf guards, recirculating fans and largest freezer capacity in the industry. 10. Advantium deluxe convection microwave oven. 11. Air station with 50' hose. 12. TWINTEMP instantaneous hot water heater and furnace with heated tile feature. 13. Electric power cord reel with surge protector. 14. Our awesome one-piece electric awning with wind sensor covers your entire patio and entryway plus electric window awnings and slide out cover package for your entire coach. 15. Electric basement slide-out tray. 16. Electric water hose reel.



2006 Founder



2006 See Ya!

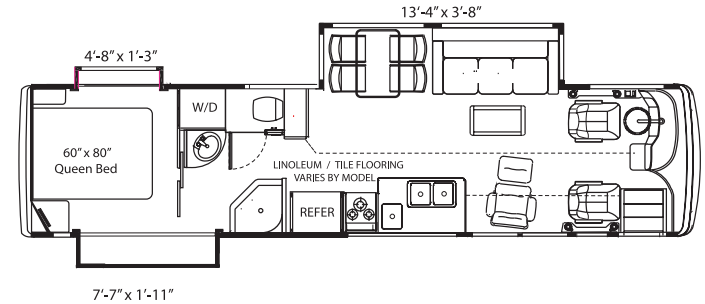


2006 Gold



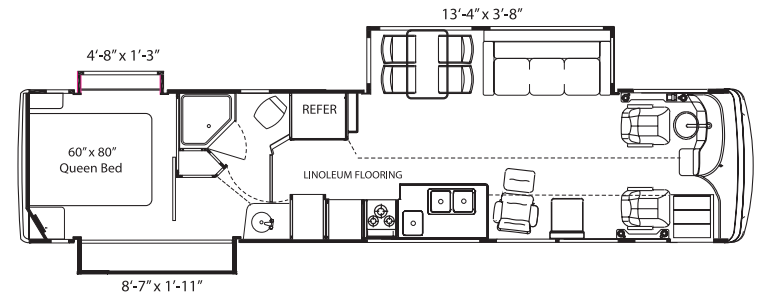
SEE-YA! & FOUNDER FLOOR PLANS

MODEL# 1001 A 36' WALK-THRU BATH WITH A NEO ANGLE SHOWER / FREE STANDING DINETTE SY36FD
MODEL# 1005 LIVINGROOM OPTION 1-ONE EURO-RECLINER WITH COFFEE TABLE
 WASHER / DRYER OPTIONAL IN SEE-YA! FOUNDER'S EDITION SYF36FD



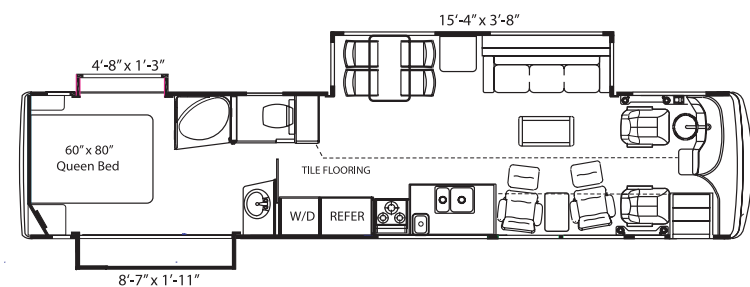
FOUNDER FLOOR PLAN

MODEL# 1006 A 40' PRIVATE BATH WITH A NEO ANGLE SHOWER / FREE STANDING DINETTE SYF40FD
 LIVINGROOM OPTION 4-TWO EURO-RECLINERS WITH FOLD DOWN CARD TABLE



SEE-YA! & GOLD FLOOR PLANS

MODEL# 1004 A 40' WALK-THRU BATH WITH GARDEN TUB / FREE STANDING DINETTE SY40FD
MODEL# 1002 LIVINGROOM OPTION 1-TWO EURO RECLINERS WITH COFFEE TABLE
 SEE-YA GOLD HAS TWO OPTIMA LEATHER RECLINERS STANDARD SYG40FD



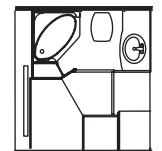
BOOTH DINETTE OPTION



J-LOUNGE OPTION 3



PRIVATE BATH OPTION



NEO ANGLE TUB

See Ya! Founder 36' & 40' Model Specifications

WEIGHTS**	36' / 40'
Unloaded Vehicle Weight UVW (LBS)	24,706 / 24,920
Gross Vehicle Weight Rating GVWR (LBS)	29,500
Gross Combined Weight Rating GCWR (LBS)	39,500
Front Gross Axle Weight Rating (LBS)	10,500
Rear Gross Axle Weight Rating (LBS)	19,000

MEASUREMENTS	36' / 40'
Wheel Base	228" / 252"
Overall Length	37' 9" / 39'-11"
Overall Height	13' 1"
Interior Height	7' 6"
Interior Width	95"
Exterior Width	102"

TANK CAPACITIES	
Water Heater (GAL)	10
Gray Tank (GAL)	75
Black Tank (GAL)	40
Fresh Water (GAL)	100
LP Tank (GAL)***	25
Fuel Tank (GAL)	90

*All weights, measurements and capacities are approximate **Heights may vary due to vehicle loading ***Weights are best estimate at time of printing

See Ya! 36' & 40' Model Specifications

WEIGHTS**	36' / 40'
Unloaded Vehicle Weight UVW (LBS)	26,077 / 27,120
Gross Vehicle Weight Rating GVWR (LBS)	32,000
Gross Combined Weight Rating GCWR (LBS)	42,000
Front Gross Axle Weight Rating (LBS)	12,000
Rear Gross Axle Weight Rating (LBS)	20,000

MEASUREMENTS	36' / 40'
Wheel Base	228" / 252"
Overall Length	37' 9" / 39'-11"
Overall Height	13"-1"
Interior Height	7' 6"
Interior Width	95"
Exterior Width	102"

TANK CAPACITIES	
Water Heater (GAL)	10
Gray Tank (GAL)	75
Black Tank (GAL)	40
Fresh Water (GAL)	101
LP Tank (GAL)***	38
Fuel Tank (GAL)	100

*All weights, measurements and capacities are approximate **Heights may vary due to vehicle loading ***Actual filled LP capacity is 80% of listing due to safety shut off required on tank

See Ya! Gold 40' Model Specifications

WEIGHTS**	
Unloaded Vehicle Weight UVW (LBS)	29,520
Gross Vehicle Weight Rating GVWR (LBS)	34,320
Gross Combined Weight Rating GVCR (LBS)	44,320
Front Gross Axle Weight Rating (LBS)	14,320
Rear Gross Axle Weight Rating (LBS)	20,000

MEASUREMENTS	
Wheel Base	252"
Overall Length	39' 11"
Overall Height	13' 1"
Interior Height	7' 6"
Interior Width	95"
Exterior Width	102"

TANK CAPACITIES	
Water Heater (GAL)	10
Gray Tank (GAL)	75
Black Tank (GAL)	40
Fresh Water (GAL)	103
LP Tank (GAL)***	38
Fuel Tank (GAL)	150

*All weights, measurements and capacities are approximate **Heights may vary due to vehicle loading ***Actual filled LP capacity is 80% of listing due to safety shut off required on tank

Standard Features

Chassis

XC Straight Rail Freightliner Chassis GVWR - 29,500 #	F
XC Raised Rail Freightliner Chassis GVWR - 32,000 #	S
XC Raised Rail Freightliner Chassis GVWR - 34,320 #	G
Allison 3000 MH 6 Speed Automatic Transmission W/ Push Button Shift Control	F S G
C7 Caterpillar 300 HP Turbocharged 7.2L Diesel Engine	F
C7 Caterpillar 350 HP Turbocharged 7.2L Diesel Engine	S
Cummins ISL 400 HP Turbocharged 8.9L Diesel Engine	G
Engine Brake - C-Brake From Jacobs	G
Engine Brake - Turbo Exhaust Retarder	F S
Meritor Front Axle I-Beam Wide Track Capacity: 10,500 Lbs	F
Meritor Front Axle I-Beam Wide Track Capacity: 12,000 Lbs	S
Air Cleaner Restriction Indicator	F S G
Air Compressor W/ Heated Air Dryer	F S G
Dual Air Tanks With Automatic Moisture Ejectors	F S G
Fuel / Water Separator	F S G
Hydraulic Front & Rear Leveling Jacks	F S G
Neway Air Ride Suspension With Manual Deflation Valve & Sachs Shock Package	F S G
Rear Mounted Cross Flow Radiator	F S G
Water to Oil Remote Mounted Transmission Air Cooler	F S G
10,000 Lb Hitch Receiver W/ 7 Way Plug	F S G
Full Air Over Drum Brakes Front & Rear With Automatic Slack Adjusters & ABS	F S
Front-Full Air Over 17" Disk / Rear-Full Air Over Drum With Auto Slack Adjusters & ABS	G
Stationary Foot Pedals	F S
Adjustable Foot Pedals	G
90 Gallon Fuel Tank	F
100 Gallon Fuel Tank	S
150 Gallon Fuel Tank	G
ZF IFS Independent Air Ride Front Suspension	G
255 / 80R22.5 Size Tires - Load Range G	F
275 / 80R22.5 Size Tires - Load Range G	S
275 / 80R22.5 Size Tires - Load Range H	G
Wheel Base - 36' - 228" / 40' - 252"	F S
Wheel Base - 40' - 252"	G
50 Degree Wheelcut on Front Steering in Both Directions	F S
56 Degree Wheelcut on Front Steering in Both Directions	G
Wheels - Steel W/ Polished Hub Caps	F S
Wheels - Aluminum W/ Valve Extensions	G

Electrical Systems

2000 Watt Xantrex Inverter W/ 100 AMP Charge	F S G
160 AMP Alternator	F S G
50 AMP 120V / 240V Power Distribution Panel	F S G
7.5 KW Diesel Generator	F S G
Batter Disconnect Switches	F S G
Eight Batteries: 6 Six Volt, 2 Twelve Volt	F S G
Interior Located Fuses for Easy Replacement	F S G
Systems Monitor Panel	F S G
Hard-wired Power Cord 28 Ft 50 AMP	F
Hard-wired Power Cord 36 Ft 50 AMP	S
Electric Power Cord Reel 36 Ft 50 AMP	G
50 AMP Surge Protector	S G

Driver's Cockpit

12V Outlet	F S G
Back Up Camera with Monitor & One Way Speaker	F S G
Dash Fans	F S G
Four-Point Semi-Automatic Hydraulic Leveling Jacks	F S G
Pilot & Copilot Map Lights	F S G
Power Controlled Heated Exterior Mirrors	F S G
Power Steering / Cruise Control	F S G
Rear View Mirror for Interior Viewing	F S G
Tilt & Telescopic Steering Wheel Column	F S G
CB Ready With Antenna	S G
Linoleum from entryway to bathroom	F
Ceramic Tile from entryway to bathroom	S G
Vinyl Driver / Passenger Seats	F
Integrated Leather Driver / Passenger Seats	S
Optima Leather™ Driver / Passenger Seats	G
Smartwheel	S G
Manual Passenger Side Step Cover	F S
Electric Passenger Side Step Cover	G
Single Electric Front Windshield Sun Visor	F
Dual Electric Front Windshield Sun Visors	S G
Manual Driver & Passenger Side Sun Visors	F S
Electric Driver & Passenger Side Sun Visors	G

More Standard Features

Air Conditioning, Heating & Vents

27,000 BTU Residential Style Basement Air Conditioning System with Heat Pump	F S G
Deluxe Ceiling Fan in livingroom and bedroom	F S G
Dual Pane Windows	F S G
Electronic Controlled Dash Heating & A/C System with Defroster	F S G
In-floor Ducted Heating & Air Distribution System	F S G
Powered Vent In Bathroom	F
Fan-tastic™ Exhaust Vent In Bathroom	S G
Fan-tastic™ Fan In Living Room	F
Fan-tastic™ Fan In Living Room & Bedroom	S G
35,000 BTU Furnace	F S G
TwinTemp™ Heating System with Instantaneous Hot Water, Zone Heating & Heated Tile	G

Interior Luxuries & Entertainment Systems

Entertainment Center with Combo VCR / DVD Player	F S G
Flexible Reading Lights Over Sofa	F S G
In Dash Stereo System with CD Player & Sirius Satellite Radio	F S G
Soft Touch Carpeted Ceiling	F S G
TV Antenna with Booster	F S G
4 Channel Stereo Amplifier	S G
AM/FM/CD Player & Clock / Alarm Stereo Receiver with Two Speakers In Bedroom	F
Shaker Oak Cabinet Doors Throughout	F S
Arched & Straight Raised Panel Oak Cabinet Doors & Face Frames Throughout	G
Storage Cabinet Behind Sofa	F S G
6 Disc CD Changer	S G
Four Living Room & Two Basement Speakers with Single Volume Control	F
Four Living Room, Two Bedroom & Two Basement Speakers with 3 Volume Controls	S G
Optional Fabric J-Lounge	F
Optional Integrated Leather J-Lounge	S
Optional Optima™ J-Lounge	G
Leather Euro Recliner with Ottoman	F S
optima™ Recliners	G
Preprogrammed Universal Remote Control	S G
Portable Satellite Dish with Dual LNB	S G
Roof Mounted Low Profile Automatic Satellite Dish with Dual LNB	F S
Recessed In-Motion Tracking Roof Mounted Satellite Dish with Dual LNB	G
Satellite Receiver In Front Overhead - Direct TV	S
Satellite Receivers/DishPVRs In Front Overhead & Bedroom Dishnet	G
Fabric Sleeper Sofa	F

Integrated Leather Sleeper Sofa	S
Optima™ Sleeper Sofa	G
27" Overhead TV	F
27" Overhead Flat Screen TV	S G
13" Overhead TV with Headphone Jack In Bedroom	F
20" Flat Panel TV in Bedroom	F S G
13" Galley TV	S G
Wired For Patio TV	F
19" Patio TV	S
20" Flat Screen Patio TV	G
Washer/Dryer Combo Ready	F
Washer/Dryer Combo Package/Filterless & Outside Vented	S G

Galley Amenities

21" Oven with 3 Burner Range & Self Lighting High Output Burners	F S G
Counter Flush Knife Rack Behind Stove	F S G
Deluxe Single Lever Kitchen Faucet with Pull Out Sprayer	F S G
Demand Water System with Pump	F S G
Exclusive Interior/Exterior Pass Through Waste Basket System	F S G
Oak Paper Towel Holder with Travel Lock	F S G
Solid Surface Countertop with Stainless Steel Sink	F S G
Space Saver Convection Microwave	F S
Delux GE Advantium Oven	G
Water Filter with Faucet	F S G
Broiler Pan	S G
Oak Dinette Table	F
Oak Dinette Table with Leaf	S G
Linoleum Flooring	F
Ceramic Tile Flooring	S
Heated Ceramic Tile with Decorative Accents In Galley & Bath	G
Whirlpool™ 22 CF Side By Side Residential Refrigerator/Freezer with In Door Water and Ice Dispenser	F
Norcold 12 CF Four Door Refrigerator/Freezer with Ice Maker	S
Dometic 14 CF Side-By-Side Refrigerator/Freezer with Ice Maker	G

Even More Standard Features

Galley Amenities Continued

Raised Oak Refrigerator Door Panels	S
Brushed Stainless Steel Refrigerator Door Panels	G

Bath and Bedroom Amenities

Cedar In Bedroom Wardrobe	F S G
Convenient Outlet Hide-Away Behind Bedside Picture Frame	F S G
Full Length Dressing Mirror	F S G
Soft Top Deluxe Inner Spring Mattress	F S G
Glass Shower Door with Towel Bar	F
Etched Glass Shower Door with Three Towel Bars	S G
European Style Body Care Dispenser	G
Goose Neck Reading Lights Above Bed	G
Height Adjustable Residential Style Massage Shower Head	F S G
High Dome Dual Pane Skylight with Shade In Shower	F S G
Large Medicine Cabinet with Mirror	F S G
Light In Shower	F S G
Seamless One Piece Sink & Countertop	F S
Solid Surface Countertop with Stainless Steel Sink	G
ABS Shower	F
One Piece Fiberglass Shower/Tub	S G
Fiberglass Toilet	F
China Toilet	S G

Plumbing & LP Systems

10 Gallon LP Gas/Electric Water Heater	F S G
Gravity & Pressurized Water Fill	F S G
No-Fuss Flush Black Holding Tank Rinsing System	F S G
25 Gallon LP Tank	F
38 Gallon LP Tank	S G
Manual Dump Valves	F
Electric Dump Valves	S G

Exterior Amenities

Electric Entry Step	F S G
Exterior Security Lights	F S G
Exterior Shower	F S G
Gel Coat Marine Grade UV Protected Front Cap	F S G
Porch Light	F S G
Rear Ladder	F S G
Slide Out Covers	F S G
Two Exterior Assist Handles	F S G
Under Hood Utility Lights Front & Rear	F S G
Electric Main Awning & Manual Entry Awning	F
Electric Main Awning with Remote Control & Wind Sensor & Manual Entry Awning	S
Single Electric Main & Entry Awning with Remote Control & Windsensor	G
Slide Out Covers & Window Awning Package	S
Electric Slide Out Window & Bedroom Window Awnings	G
Large Patio Storage with TV Hook Up, 12V Receptacle	F
AC/DC Refrigerator/Freezer, 4 Folding Chairs, 2 Folding Tables & 8 Storage Bins	S
AC/DC Refrigerator/Freezer, 4 Folding Chairs, 2 Folding Tables, 2 Deluxe Folding Recliners & 8 Storage Bins	G
19" Patio TV	S
20" Flat Screen Patio TV	G
EZ-Stor™ Slide Out Trunk Tray	S
Electric EZ-Store™ Slide Out Trunk Tray	G
Perimeter Sensors, Chrome Rear View Mirrors, Cell Phone Antenna, GPS Antenna & Keyless Entry	G

F = Founder Standard Feature
 S = See-Ya! Standard Feature
 G = GOLD Standard Feature

Alfa's Exclusive Solid Gold Five-Year Protection Plan

Included in every coach at no additional cost

If you were to buy an extended service plan on your own, the cost could be in the thousands of dollars! When you buy a 2006 Alfa motorhome you get an extended service plan AT NO ADDITIONAL COST. This is Alfa's gift to you. We want our customers to enjoy the RV lifestyle – Worry Free!

How does the Five-Year Solid Gold Plan Work?

Year One: During the first year of ownership, Alfa coaches are covered by Alfa's limited manufacturer's warranty with no deductible. The customer is also covered by various component and appliance manufacturers warranties for up to the first three years of ownership. See Dealer for details.

Year Two through Five: To ensure years of worry free RV enjoyment, Alfa has negotiated a comprehensive four-year extended service plan from Western General. This plan has a \$100 deductible for covered repairs per visit. While this is NOT a bumper-to-bumper agreement it does cover the major components of the Alfa coach. As the various manufacturers' warranties expire, the four-year service plan will apply to these items, subject to certain coverage limitations and exclusions. See Dealer for details.

How can Alfa provide this extraordinary protection?

Because Alfa builds quality into every one of its RV's, we are able to ensure our coaches long term performance and are willing to provide our owners with this unprecedented Five-Year Solid Gold Protection Plan.

Enjoy the Alfa RV lifestyle – Worry Free!

I. WHAT IS COVERED

Alfa Leisure, Inc.'s ("Alfa") limited warranty covers trailers and motorhomes registered in the United States and normally operated or used in the United States or Canada, and is provided to the original retail purchaser of the trailer or motorhome. For all of our trailers and motorhomes, Alfa warrants that all parts of our manufacture are free from substantial defects in material and workmanship under normal use, except those items listed below under Section IV, "What Is Not Covered." For our motorhomes, Alfa warrants the structure of the interior and exterior sidewalls, slide outs, floor, roof, and frame to be free from substantial defects in material and workmanship under normal use, except those items listed below under Section IV, "What Is Not Covered." This warranty is not intended to replace, nor does it replace, any of the valid warranties separately given on appliances and equipment manufactured by third parties and installed by Alfa on your new Alfa trailer or motorhome, including but not limited to, (in the case of motorhomes) the chassis, drive-train, engine, transmission, and (in the case of both trailers and motorhomes) all other separately warranted appliances, parts or components. However, Alfa will assist you in enforcing these valid third party warranties (except for tires and batteries) throughout the term of this warranty upon presentation of proof of your compliance with the warranty procedures required by the appropriate third party appliance or equipment manufacturer. This is a limited warranty, as described in the Magnuson-Moss Warranty Federal Trade Commission Improvement Act (15 U.S.C. 2301, et seq.). In the event that of a covered defect, Alfa will repair the defect under the terms of this limited warranty. Needed repairs covered under this warranty may be performed using new or remanufactured parts, at Alfa's election.

II. WARRANTY PERIOD

The warranty period begins on the date the trailer or motorhome is first delivered to you, the original retail purchaser, and extends for a period of one (1) year from such date, or in the case of a motorhome for 18,000 miles, whichever occurs first. Written notice of any covered defect must be given to Alfa no later than the last day of the warranty period, and repairs must be made or initiated no later than forty five (45) days after the warranty period ends. Any defect that is not reported during the warranty period is not covered.

III. LIMITATIONS AND EXCLUSIONS

THIS LIMITED WARRANTY IS NOT TRANSFERABLE UNLESS REQUIRED BY LAW. ANY IMPLIED WARRANTIES, INCLUDING IMPLIED WARRANTIES OF MERCHANTABILITY AND FITNESS, ARE LIMITED IN DURATION TO THE WARRANTY PERIOD. INCIDENTAL AND CONSEQUENTIAL DAMAGES ARE EXCLUDED FROM COVERAGE UNDER THIS WARRANTY. SOME STATES DO NOT ALLOW LIMITATIONS ON HOW LONG AN IMPLIED WARRANTY WILL LAST OR THE EXCLUSION OR LIMITATION OF INCIDENTAL OR CONSEQUENTIAL DAMAGES, SO THE ABOVE LIMITATIONS AND EXCLUSIONS MAY NOT APPLY TO YOU. THIS WARRANTY GIVES YOU SPECIFIC LEGAL RIGHTS, AND YOU MAY ALSO HAVE OTHER RIGHTS WHICH VARY FROM STATE TO STATE.

IV. WHAT IS NOT COVERED

This warranty does not cover the following:

- A. Batteries, hubcaps, light bulbs, shock absorbers, tires, upholstery, wheels, and wheel trim, unless being repaired or replaced due to damage resulting from a covered defect.
- B. Any defect, damage or malfunction caused by or resulting from abuse, misuse, negligence, accident, collision, fire, theft, vandalism, riot, explosion, an act of war or terrorism, or objects striking the trailer or motorhome.
- C. Any defect, damage or malfunction caused by post-manufacture alteration or modification made to your trailer's or motorhome's original equipment as manufactured, installed and/or assembled by Alfa, including but not limited to the installation of any custom or add-on part, alarm or alarm system, oversized or undersized tires, trailer hitch, or any modification or alteration of the trailer or motorhome's frame or suspension components.
- D. Any defect, damage or malfunction caused by your failure to exercise reasonable care to protect against and avoid further damage to your trailer or motorhome after you knew or should have known of the existence of a defect, breakdown or component failure.
- E. Any defect, damage or surface corrosion, subsequent to manufacture, solely caused by or resulting from the environment, such as moisture, acid rain, lightning, airborne fallout, earthquake, freezing, rust, oxidation, windstorm, salt, sand, wind, chemicals in the surrounding air, pollution, salt water, hail, flood, rodent, animal or insect infestation, mold, mildew or any other external environmental condition.
- F. Any defect or damage caused by or related to condensation in the interior of the trailer or motorhome, except for condensation occurring in the interior of double-paned windows, between the panes.
- G. Any defect or damage caused by or related to normal wear, usage and deterioration, such as fading or discoloration of soft goods (upholstery, drapes, carpet, vinyl, screens, cushions, mattresses), fading or discoloration of exterior plastic or fiberglass components, tears, punctures and soiling.
- H. Any defect that is not reported during the warranty period.
- I. Any repair performed without prior authorization from the selling dealer or Alfa.
- J. Squeaks, creaks, pops, wind noise and other such subjective noises, which are normal for trailers and motorhomes and are not related to or caused by any covered defect.
- K. Any minor cosmetic flaw, damage or imperfection which is normal in the manufacture, shipping and display of trailers or motorhomes and does not substantially affect the suitability of the trailer or motorhome for its intended purpose of recreational use.
- L. The cost of any normal trailer and motorhome maintenance service or parts, including but not limited to, alignment, suspension, wheel balancing, filters, fluids, lubricants, engine coolant, brake pads, brake rotors, brake drums, brake linings and shoes, engine tune up, and spark/glow plugs. However, such cost will be included if incurred as a result of a breakdown caused by a defect or malfunction covered by this warranty.
- M. The cost of any labor or replacement parts which are not reasonably necessary to correct or repair a covered defect, but which a service or repair facility may recommend or require as part of the overall repair.
- N. Economic loss or extra expense, including, but not limited to physical damage, property damage, transportation to and from dealer or manufacturer locations, loss of trailer or motorhome use, storage, loss of time, profits, wages or pay, inconvenience, vehicle rental expense, lodging, meal or other travel costs, state or local taxes required on warranty repairs, commercial loss or any other loss that results from any trailer or motorhome defect, malfunction or breakdown which is not otherwise covered under this warranty.
- O. Costs incurred for transportation of the trailer or motorhome to a dealer, costs incurred as the result of the consumer's request to have repairs performed at a location other than an authorized dealership, or costs incurred for services calls, mileage charges or other similar fees associated with the use of a mobile service provider, unless deemed necessary by Alfa and approved by Alfa in advance of such costs being incurred.
- P. Any breakdown that occurs and/or repairs made outside of the United States of America and Canada.
- Q. Any trailer or motorhome used as a commercial unit, a rental unit, taxi, limousine or shuttle, or for commercial delivery, towing or road repair operations, construction job site activities, hauling freight, police or emergency service, principally off road use, racing, competitive driving, snow removal, road work, service or repair.
- R. Any Alfa trailer or motorhome currently or previously titled as salvaged, scrapped, junked, dismantled or totaled.
- S. For any Alfa motorhome, the chassis and any mechanical parts, including the engine, drive train, steering system, brake system, wheels, tires, lug nuts, muffler and any other parts manufactured or assembled by the chassis manufacturer.
- T. Any undertaking, representation or warranty made by any dealer or other third party, which is not contained within this limited warranty. Alfa does not authorize any person to create for it any obligation, warranty or liability in connection with Alfa trailers or motorhomes.

V. HOW TO OBTAIN WARRANTY SERVICE

For this limited warranty to apply, you must, within the warranty period, provide Alfa with notice of the defect(s), a reasonable opportunity to inspect the trailer or motorhome, reasonable attempt(s) to repair the trailer or motorhome, and a reasonable period of time to complete repairs. You must also follow the procedures set forth in the warranty document, which include (a) avoiding further damage to your trailer or motorhome, (b) taking the trailer or motorhome to an authorized Alfa dealer or service center near you, (c) notifying Alfa of a covered defect within a reasonable time after discovering it, (d) obtaining Alfa's authorization and approval for any repair before starting any repair work, (e) permitting a reasonable inspection of your trailer or motorhome before repairs are made, (f) allowing a reasonable time to perform necessary repairs and (g) sending approved claims to Alfa for reimbursement.

* All information contained in this brochure and all related materials are subject to the terms and conditions outlined in the written warranty agreement signed by the customer at the time of purchase (the "Warranty Agreement"). In the event there are conflicts or inconsistencies between the terms and conditions set forth in this brochure and the Warranty Agreement, the Warranty Agreement shall govern in all cases. This is not an agreement, but an outline of general coverage. Please read the manufacturer's warranty and the extended service contract agreement available at your ALFA dealer for exact coverage terms and conditions.

JOIN THE FAMILY – THE FAMILY OF ALFA OWNERS

Join the fun, cherish the memories. Your first year's membership in the ALFA Owners Club is included with the purchase of your ALFA. Travel to exciting destinations with quality minded people like yourself. Numerous activities are hosted by local chapters, leading up to the annual national rally. Your adventure of a lifetime may be just beginning with your ALFA purchase.



alfa[™]
Gives You More!

ALFA LEISURE, Inc., 1612 S. Cucamonga, Ontario, CA 91761 • (909) 628-5574 • www.alfaleisure.com

©2005 Alfa Leisure, Inc. All Rights Reserved Printed in the U.S.A. All specifications and features apply to product manufactured at time of publication.

ALFA Leisure reserves the right to make product changes without notice and without incorporating them in similar models on another date. Every effort has been made to avoid printing errors, however, if there are any specification or printing errors, we disclaim responsibility and liability.