



TERRA-Floor Plans, Standard Features and Options

# Terra



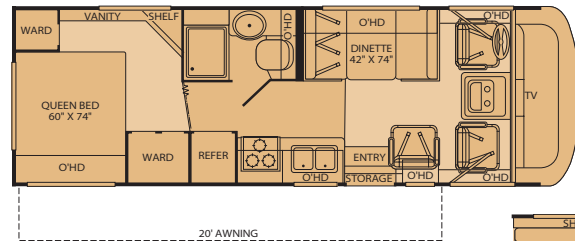
TERRA-Class A Gas-2006



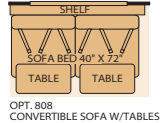
## Floor Plans

### 26Q

Sleeping Accommodations: 3\*



Exterior Storage Capacity: 128 cu. ft.

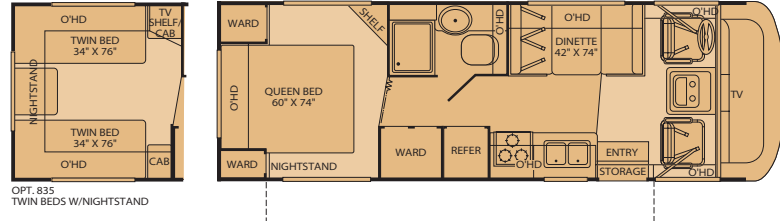


\* Sleeping accommodations are based on designed sleeping areas and may be greater than Sleeping Capacity Weight Rating (SCWR) found on the Cargo Carrying Capacity label located in each RV. Sleeping accommodations are based on standard layout. Optional furniture may increase or decrease sleeping accommodations.

Seatbelt configuration may vary depending on options chosen.

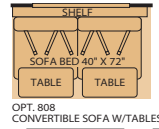
### 26Y

Sleeping Accommodations: 3\*



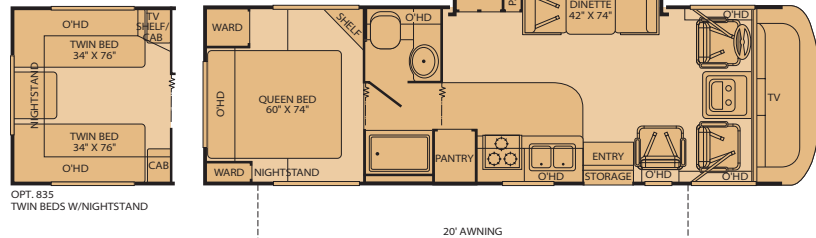
OPT. 835 TWIN BEDS W/NIGHTSTAND

Exterior Storage Capacity: 49 cu. ft.



### 29J

Single Slide-Out, Sleeping Accommodations: 3\*

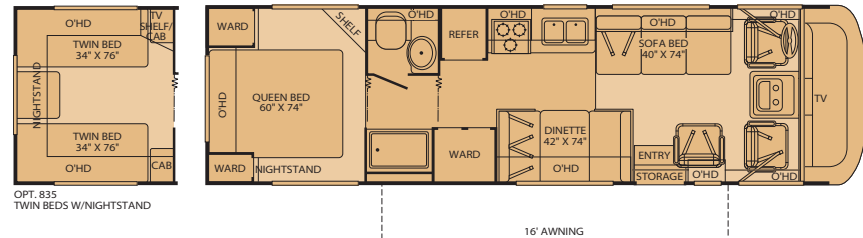


OPT. 835 TWIN BEDS W/NIGHTSTAND

Exterior Storage Capacity: 55 cu. ft.

### 31H

Sleeping Accommodations: 4\*



OPT. 835 TWIN BEDS W/NIGHTSTAND

Exterior Storage Capacity: 72 cu. ft.

## Weights and Measurements

### FORD®/WORKHORSE™

CHASSIS	26Q	26Y	29J	31H	32S
Engine Displacement (Liters)	N/A/8.1	N/A/8.1	6.8/8.1	6.8/8.1	6.8/8.1
Wheelbase (Inches)	N/A/158.5	N/A/158.5	178/178	190/190	208/208
GVWR (lbs) <sup>1</sup>	N/A/16,000	N/A/16,000	18,000/18,000	15,700/16,000	20,500/18,000
Front GAWR (lbs) <sup>2</sup>	N/A/6,500	N/A/6,500	7,000/7,000	6,000/6,500	7,000/7,000
Rear GAWR (lbs) <sup>2</sup>	N/A/10,500	N/A/10,500	11,000/12,000	11,000/10,500	13,500/12,000
Base Weight (lbs) <sup>3</sup>	N/A/11,490	N/A/11,356	13,266/12,866	12,817/12,417	14,046/13,608
GCWR (lbs) <sup>4</sup>	N/A/22,000	N/A/22,000	26,000/22,000	26,000/22,000	26,000/22,000
Hitch Rating Weight (lbs) <sup>5</sup>	N/A/5,000	N/A/5,000	5,000/5,000	5,000/5,000	5,000/5,000
Tongue Weight (lbs) <sup>6</sup>	N/A/500	N/A/500	500/500	500/500	500/500
Fuel Capacity (gal)	N/A/60	N/A/60	75/75	75/75	75/75

DIMENSIONS AND CAPACITIES	26Q	26Y	29J	31H	32S
Overall Length <sup>7</sup>	27' 0"	27' 0"	29' 4"	31' 5"	32' 11"
Overall Height (with A/C)	11' 4"	11' 4"	11' 4"	11' 4"	11' 4"
Overall Width (maximum) <sup>6,7</sup>	102"	102"	102"	102"	102"
Interior Height (maximum)	79"	79"	79"	79"	79"
Interior Width (maximum)	96"	96"	96"	96"	96"
Fresh Water Holding Tank (gal)	30	60	60	60	60
Grey Water Holding Tank (gal)	37	37	45	48	45
Black Water Holding Tank (gal)	30	30	35	38	38
Appliance Propane Tank (gal) (WC) <sup>8</sup>	14	14	25	25	14
Water Heater Tank (gal)	6	6	6	6	6

Liquid Weight Reference: Water (gal) = (8.3 lbs/3.8 kgs) Fuel (gal) = (6.1 lbs/2.8 kgs) Propane (gal) = (4.2 lbs/1.9 kgs)

Metric Conversion: Multiply pounds x 0.453 to obtain kilograms. Multiply gallons x 3.785 to obtain liters.

### CHASSIS

Model: Ford®/Workhorse™

Engine: 6.8L Triton® V10/8.1L Vortec™ V8

Transmission: 5-Speed Automatic w/Overdrive/  
4-Speed Automatic w/Overdrive

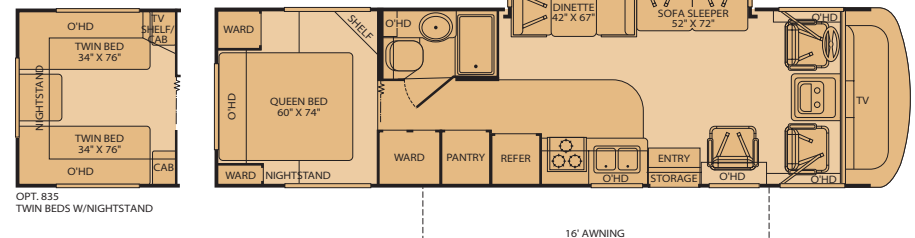
Alternator Amps: 130 Amp/145 Amp

Horsepower: 362HP/340HP

Torque: 457 lb-ft @ 3250 RPM/455 lb-ft @ 3200 RPM

### 32S

Single Slide-Out, Sleeping Accommodations: 5\*



OPT. 835 TWIN BEDS W/NIGHTSTAND

Exterior Storage Capacity: 71 cu. ft.

## Most Popular Features

Visit [www.fleetwoodrv.com](http://www.fleetwoodrv.com) for complete listing.

### Interior

#### THROUGHOUT

- 6-Gallon Quick-Recovery Water Heater w/Direct Spark Ignition
- Fiber Ceilings for Superior Sound Dampening
- Wall Mounted Heat Registers
- 12V Deep Cycle House Battery
- 25,000 BTU Furnace (Model 26Q & 26Y)

#### DRIVER CONVENIENCE

- AM/FM Radio w/CD & Electronic Tuning (Satellite Ready Radio)

#### LIVING ROOM

- 20" TV in Front Overhead
- Flexsteel® Furniture
- Vinyl Floor Covering in Lavy/Galley

#### GALLEY

- Large Viewing Window at Dinette
- Microwave w/Range Hood & Light

#### BEDROOM

- Innerspring Mattress
- Expanded Wardrobe Storage

#### BATHROOM

- Molded ABS Tub/Shower
- Skylight in Tub/Shower

#### SAFETY/CONVENIENCE

- 10 ABC Fire Extinguisher
- Carbon Monoxide Detector/Alarm

- 3 Interior Decors
- 35,000 BTU Furnace (Model 29J, 31H & 32S)
- Battery Disconnect System
- Denso® A/C Heater Combo w/17,000 BTUs of Cooling Ability
- Incandescent Lighting
- Interior Overhead Storage

- Double Swivel Sun Visors w/Map Pockets

- 12V Power Jack
- Carpet Pad

- Single-Lever Faucet
- Wood Drawer Construction

- Rear TV Receptacle

- Marine Toilet
- Power Bath Vent

- Propane Detector/Alarm

- On-Demand Water Pump w/Filter
- Raised Floor Configuration
- Systems Monitor Panel 120V/12V AC/DC Converter/Central Electrical Panel w/Charger
- Water Heater Bypass

- Driver/Front Passenger Captain's Chairs w/ Reclining Back/Slide Controls

- Telephone Jack
- Video Control Box

- 3-Burner Cook Top
- 8 cu. ft. Dometic® Refrigerator

- TV Shelf w/Cable Jack (TV not included)

- Vanity Lights

- Smoke Detector/Alarm

## Fleetwood Advantages

- **Complete TuffPEX® Plumbing System**
- **Deluxe Roller Bearing, Full Extension Drawer Guides**

- **EZ Glide® Slide-Out System w/EZ Store (29J & 32S)**
- **Royal Tuff-Ply Radius Roof w/Ducted A/C & Flat Ceiling**

- **Vacu-bond® Walls w/Smooth High-Gloss Exterior Tuff-Coat® Fiberglass**

*Bold Denotes Fleetwood's Key Features*

1. GVWR (Gross Vehicle Weight Rating) is the maximum permissible weight of this fully loaded motor home. The GVWR is equal to or greater than the sum of the unloaded vehicle weight plus the cargo carrying capacity.
2. GAWR (Gross Axle Weight Rating) is the maximum permissible loaded weight a specific axle is designed to carry.
3. Base Weight is the estimated weight of the motor home without fuel, options, water, cargo or passengers.
4. GCWR (Gross Combined Weight Rating) is the value specified by the motor home manufacturer as the maximum allowable loaded weight of this motor home with its towed vehicle. Towing and braking capacities may be different. Refer to Fleetwood and chassis manufacturer's manuals for complete information.
5. Length taken from front bumper to rear bumper (excludes accessories).
6. Excludes safety equipment and awnings.
7. Motor homes feature a body-width over 96" which will restrict your access to certain roads. Before purchasing, you should research any state and/or province road laws which may affect your usage.
8. Tank manufacturer's listed water capacity (WC). Actual propane capacity is 80% of water listing as required by the safety code.

† The chassis manufacturer recommends the installation of a supplemental brake control system to activate the brakes on the vehicle or trailer you are towing. Hitch receiver ratings expressed are maximum for the hitch receiver installed and may require the purchase of additional equipment that is dependant on the weight of the towed load. Consult with hitch receiver manufacturer for further information.

N/A = Not Applicable

### Exterior

#### THROUGHOUT

- 4.0kW Onan® MicroQuiet Generator

#### AUTOMOTIVE

- Halogen Headlights w/Polycarbonate Lens

#### SAFETY/CONVENIENCE

- Deadbolt Latch on Entry Door

#### BODY STRUCTURE

- Steel Floor/Wall/Ceiling Framing

#### STORAGE

- Large, Lighted Pass-Through Exterior Storage Compartment

- Awning Rail/Drip Molding (Both Sides)

- Rear Fuel Fill (26Y, 29J, 31H & 32S)

- High Mounted Large Taillights

- Two-Piece Fiberglass Front Cap

- Continuous One-Piece Compartment Bulb Seal

- Outstanding Exterior Styling

- Spare Tire w/Carrier

- Power Entry Step

- 2" Vacu-bond® Floor

- Insulated Luggage Doors
- Lighted Luggage Compartment

## Options

#### THROUGHOUT (Exterior)

- Automatic 4-Point Electric Levelers (29J & 32S)
- Dual 6V Deep Cycle 217 Amp Auxiliary Batteries
- Electronic Climate Control w/Dual A/C w/5.5kW Generator Upgrade (Recommended for extreme temperatures & high humidity conditions) (29J, 31H & 32S)
- Exterior Wash Unit
- Holding Tank Heater

#### BEDROOM

- Twin Beds 34" x 76" w/Nightstand (26Y, 29J, 31H & 32S)

#### GALLEY

- 3 Burner Range w/Oven
- Convection Microwave Oven

#### LIVING ROOM

- Day/Night Pleated Shades
- DVD/VCR Combo Player
- Fan-Tastic® Power Roof Vent
- Sofa Bed 40" x 72" w/Table (26Q & 26Y)
- Wall to Wall Vinyl Flooring

## Setting the Standard in Motor Home Quality.

Fleetwood® prototypes are exposed to thousands of miles of durability testing. Those components that don't survive are redesigned until they do. This sets our standard in safety and durability.

Royal Tuff-Ply roofing technology is one of the most durable roofing materials on the market and also reflects sunlight to reduce chalking. White roof material minimizes heat build-up, keeping the temperature cool and comfortable.

Reliable TuffPEX® plumbing runs throughout each vehicle creating a durable seal on all internal tubing. TuffPEX® assures water flow and functions in colder temperatures. The TuffPEX® system is an industry leader in quality plumbing.

For each outer wall, Fleetwood uses one seamless, solid piece of its exclusive Tuff-Coat® fiberglass composite. It resists UV rays, cracks and impacts. Our products look newer longer and that's a big plus at resale time.

To assure a strong, weather-resistant structure, Fleetwood Vacu-bonds® all sidewalls, floors and ceilings to a durable aluminum or steel frame. The Vacu-bond® process is unmatched by many competitors.

**IMPORTANT — PLEASE READ:** Product information, photography and illustrations included in this publication were as accurate as possible at the time of printing. For further product information and changes, please visit our website at [www.fleetwoodrv.com](http://www.fleetwoodrv.com) or contact your local Fleetwood dealer. Prices, materials, design and specifications are subject to change without notice. All weights, fuel, liquid capacities and dimensions are approximate. Fleetwood has designed its recreational vehicles to provide a variety of uses for its customers. Each vehicle features optimal seating, sleeping, storage and fluid capacities. The user is responsible for selecting the proper combination of loads (i.e. occupants, equipment, fluids, cargo, etc.) to ensure that the vehicle's capacities are not exceeded.



## What Drives You?

Maybe it's feeling like you're the only one on Earth. Perhaps it's the unique sense of closeness with the great outdoors. Or, it might be the joy that comes from spending quality time with family and friends. Whatever the reason, we know that you have a strong drive to experience everything that comes with spending time on the road. And for more than 50 years, we've shared that passion with you. Because we're RV enthusiasts ourselves, you can see our passion in the vehicles we design and build. Own a Fleetwood, and you'll feel like you're not just traveling, but embarking on an experience unlike any other. Set your own course for adventure and get out there and explore the world around you. Once you do, you'll see what it is that drives us — it's you.



**RV OWNERCARE\*** is a limited one-year/15,000-mile coach warranty and three-year/50,000-mile structural warranty, whichever occurs first, and it is fully transferable for the first 12 months. RV OWNERCARE is one of the RV industry's most comprehensive programs and includes systems, appliances, components and construction, with no deductible and no service charge. RV OWNERCARE coverage is provided from a company that will be around in the future to service your needs. See your nearest Fleetwood dealer for a full explanation of benefits and restrictions.

**FLEETWOOD TRAVELCADE CLUB** As a Fleetwood owner, you're eligible to become a member of our owners' group, Fleetwood Travelcade Club. It's a perfect way to meet other Fleetwood owners who love to travel across America and share in the RV lifestyle. Call (877) 577-2560 or visit [www.fleetwood.com/clubs](http://www.fleetwood.com/clubs) to learn more and join the fun!

**FLEETWOODRV.COM** To locate a dealer near you, visit our website or call 1-800-444-4905. We can also be contacted at Fleetwood Customer Relations, P.O. Box 7638, Riverside, CA 92513-7638.

**IMPORTANT—PLEASE READ** Product information, photography and illustrations included in this publication were as accurate as possible at the time of printing. For further product information and changes, please visit our website at [www.fleetwoodrv.com](http://www.fleetwoodrv.com) or contact your local Fleetwood dealer. Prices, materials, design and specifications are subject to change without notice. All weights, fuel, liquid capacities and dimensions are approximate. Fleetwood has designed its recreational vehicles to provide a variety of uses for customers. Each vehicle features optimal seating, sleeping, storage and fluid capacities. The user is responsible for selecting the proper combination of loads (i.e.: occupants, equipment, fluids, cargo, etc.) to ensure that the vehicle's capacities are not exceeded.

Your local Fleetwood dealer is:



[www.fleetwoodrv.com](http://www.fleetwoodrv.com)

\*For complete info see your Fleetwood dealer. ©2005. Fleetwood Enterprises, Inc.  
Printed in the USA. Inventory control number TRA06F2 10/05.

