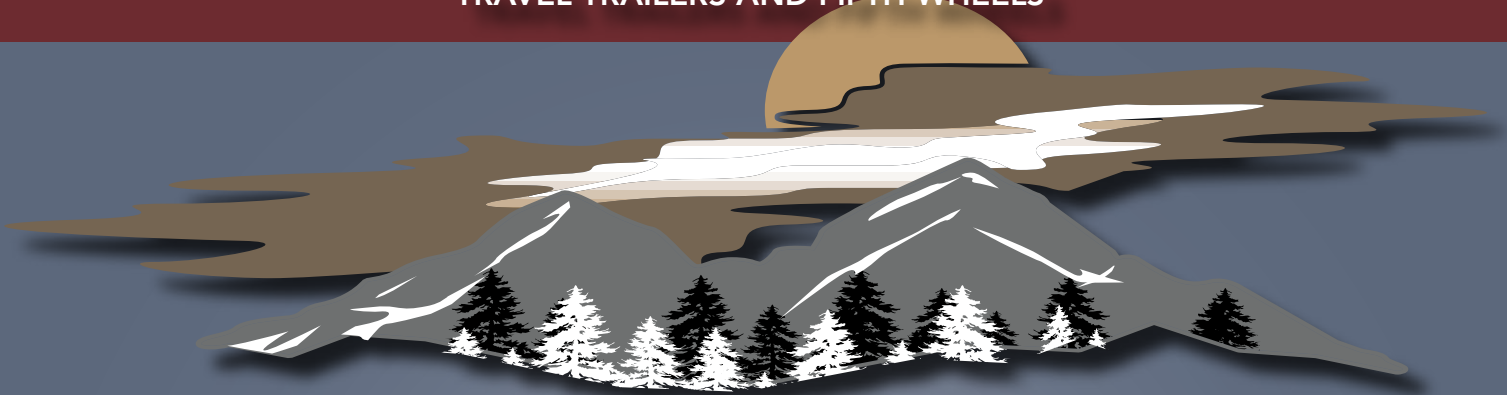


SALEM^{LE}

TRAVEL TRAILERS AND FIFTH WHEELS



Quality, Value and Comfort that will exceed your every expectation!





- A. Main Triple Entry Steps
- B. 2" X 3" Floor Joists 12" on Center
- C. 5/8" 5-Ply Tongue & Groove Plywood Floor Decking
- D. 2" Wall Studs 16" or Less on Center
- E. Fiberglass 30" Entry Door
- F. .024 Aluminum Siding
- G. 5" Bowed Truss Roof Rafters
- H. Seamless Rubber Roof (12 yr. Warranty)
- I. R-7 Fiberglass Insulation Throughout
- J. Full Pass Thru Storage
- K. Clamp Ring Jalousie Windows
- L. Smooth Rolled Skirting
- M. Ducted Heat
- N. Diamond Plate Rockguard
- O. 3/8" Roof Decking (Full Walk-On Roof)
- P. LP Bottle Cover w/ Easy Access
- Q. 13.5K Ducted Roof A/C
- R. Carpet with padding
- S. Hitch light



Seamless Rubber Roof



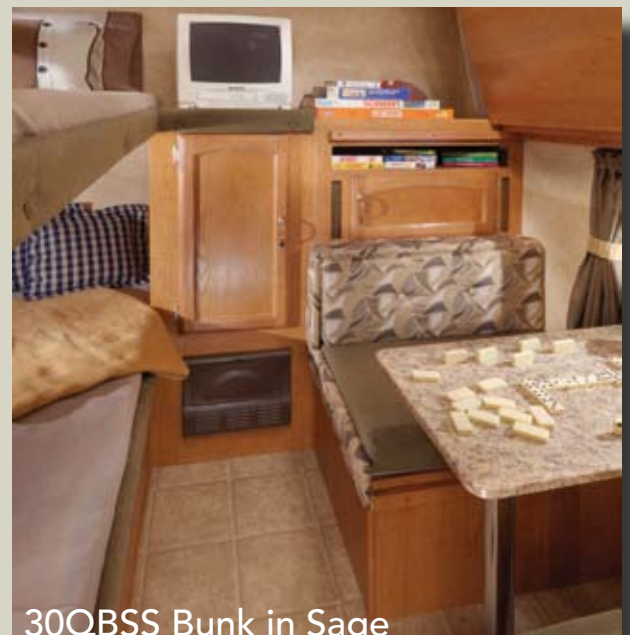
Strut Assist Underbed Storage



Seamless Awning



5/8" 5-Ply Tongue in Groove Floor Decking



30QBSS Bunk in Sage



30QBSS Shown with Tan Interior



Salem's Swivel TV Entertainment Center
(Available on Select Floorplans)



29FKSS Shown with Mocha Interior

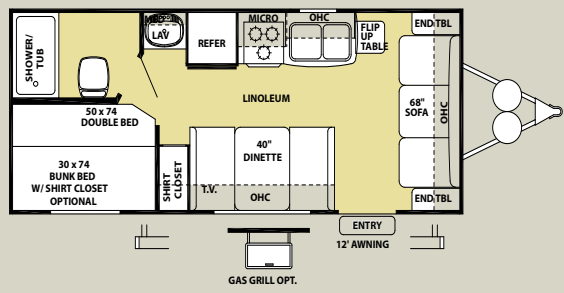
1. 6 Door Full Length Overhead Cabinet 14" Deep
2. 2 Storage Doors at Base of Dinettes
3. 80" Interior Height
4. (4) Cube Speaker Sound System
5. "Bull Nose" Countertops

6. Storage Access Under Standard Sofa (Air Hide-A-Bed Shown)
7. Decorative Reading Light
8. Solid Woodframe Mortise and Tenon Doors
9. High Rise Faucet
10. 44"x72" Oversized Dinette (Slide-Out)

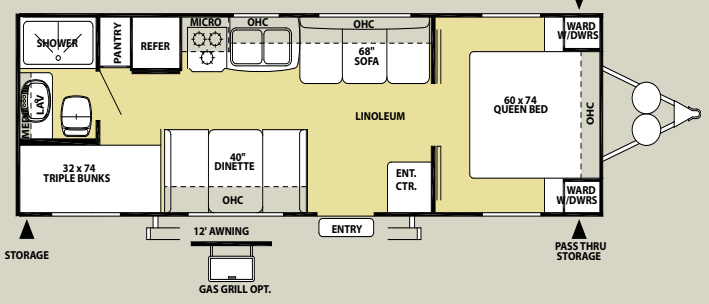
SALEM LE

SALEM LE NON-SLIDE TRAVEL TRAILERS

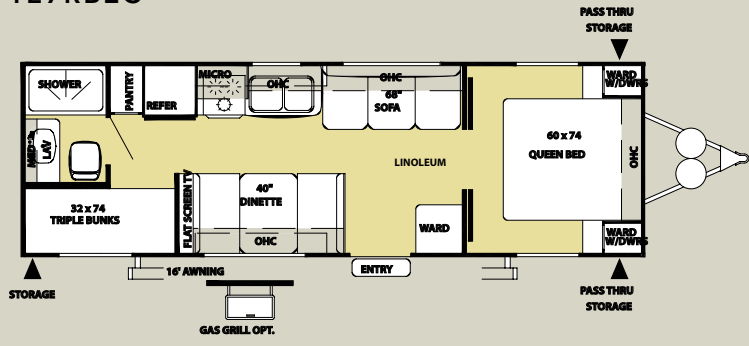
T19BH



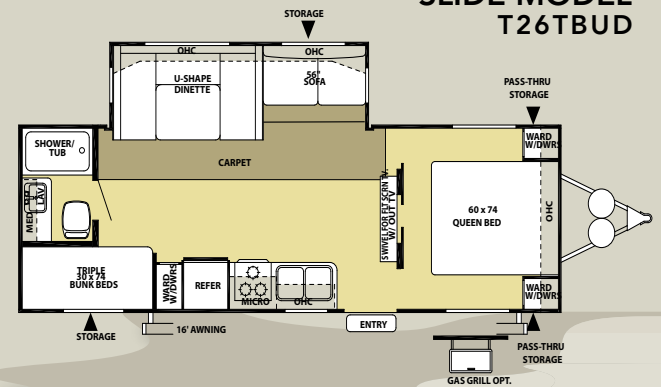
T27RB



T27RBE

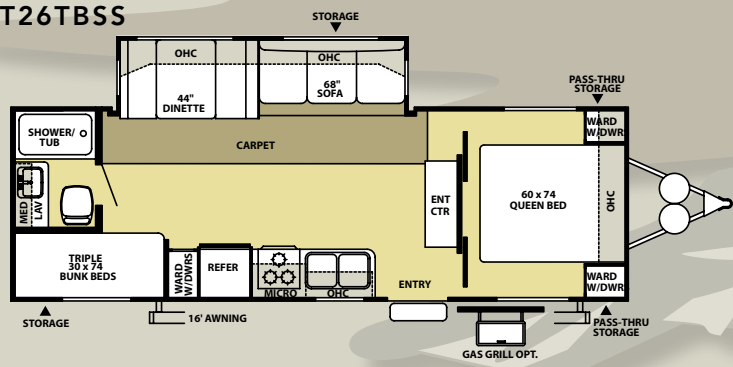


SLIDE MODEL
T26TBU

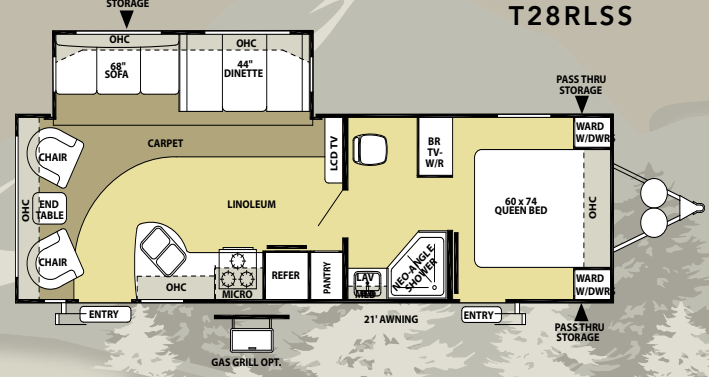


SALEM LE SLIDE-OUT TRAVEL TRAILERS

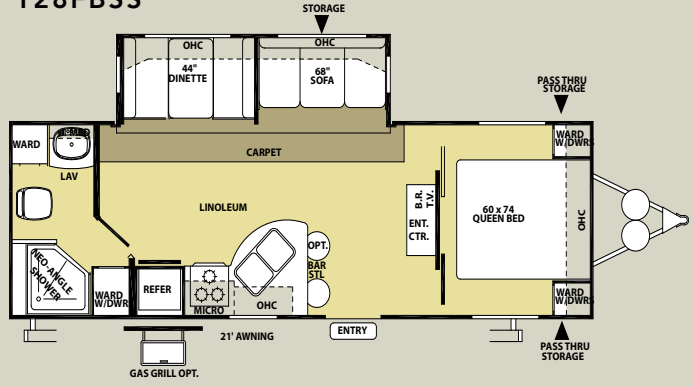
T26TBSS



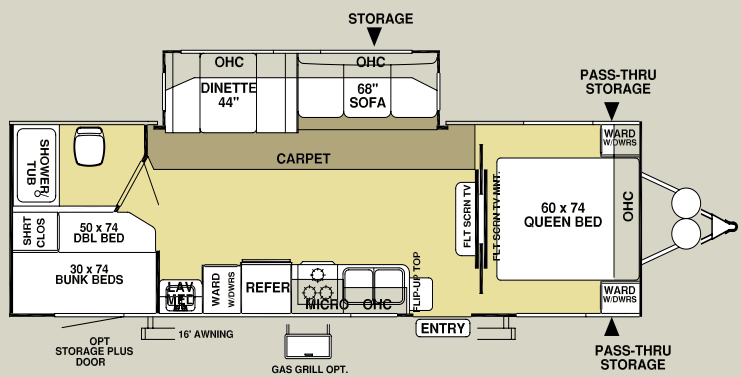
T28RLSS



T28FBSS

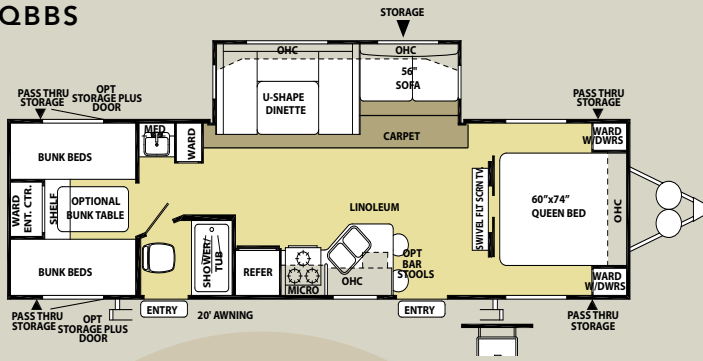


T28DDSS

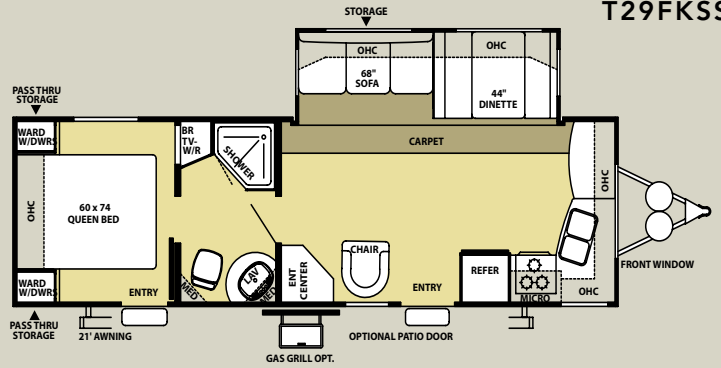


SALEM LE SLIDE-OUT TRAVEL TRAILERS (CONT.)

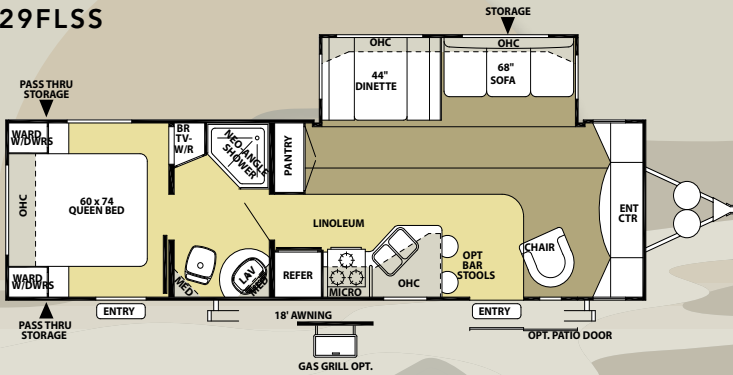
T29QBBS



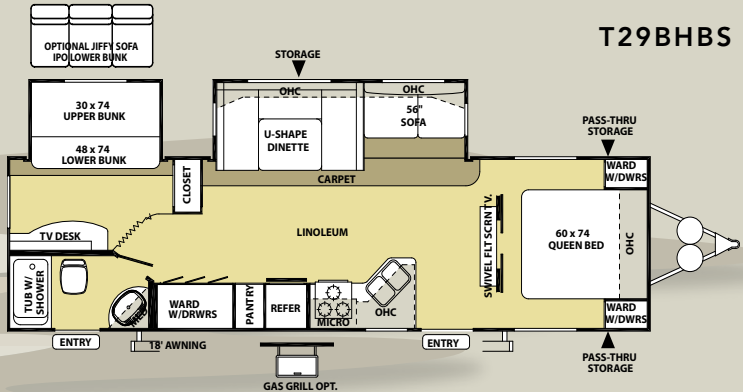
T29FKSS



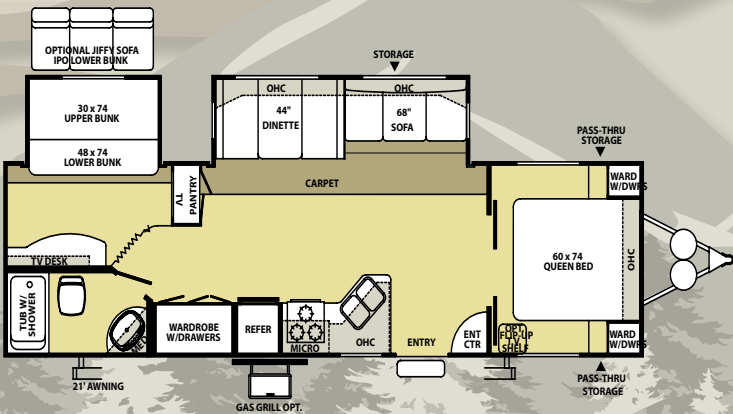
T29FLSS



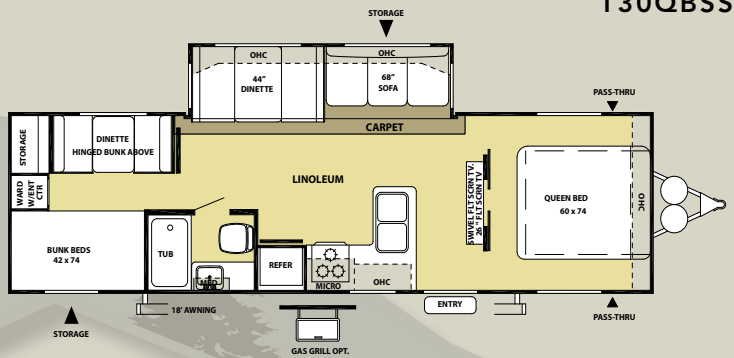
T29BHBS



T30BHBS



T30QBSS



TRAVEL TRAILER SPECIFICATIONS

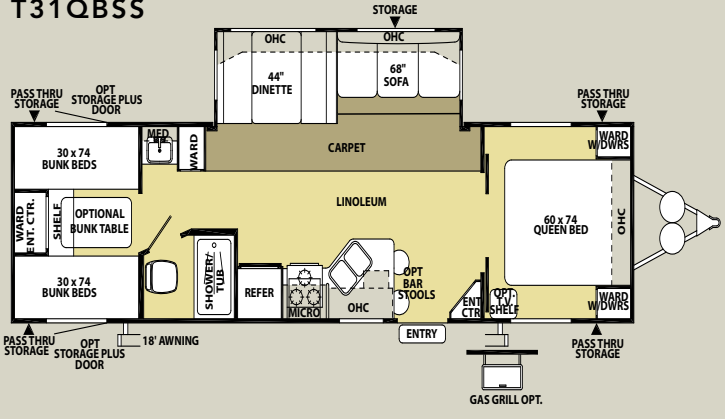
	19BH	27RB	27RBEC	26TBUD	26TBSS	28RLSS	28FBSS	28DDSS	29QBBS	29FKSS	29FLSS	29BHBS	30BHBS	30QBSS
Hitch Weight (lb)	435	590	615	805	805	660	900	620	TBD	910	860	875	780	980
Axle Weight	3535	4260	4242	5075	5075	5342	5110	5495	TBD	5305	5330	6820	6370	5595
Dry Ship Weight	3970	4850	4857	5880	5880	6002	6010	6115	TBD	6205	6240	7695	7150	6575
GVWR	7435	7590	7615	7805	7805	7660	7900	10780	TBD	7900	7910	11035	10940	11140
CCC (Cargo Capacity)	3427	2702	2720	1887	1887	1620	1852	4625	TBD	1655	1632	2960	3752	4565
Ext Length	22' 10"	29' 5"	29' 4"	28' 9"	28' 9"	32' 0"	30' 3"	30' 10"	TBD	30' 5"	32' 0"	34' 3"	34' 2"	33' 2"
Ext Height	10' 6"	10' 6"	10' 6"	11' 1"	11' 1"	11' 1"	11' 1"	11' 1"	11' 1"	11' 1"	11' 1"	11' 1"	11' 1"	11' 1"
Int Height	80"	80"	80"	80"	80"	80"	80"	80"	80"	80"	80"	80"	80"	80"
Fresh Water Cap (gal)	42	42	42	42	42	42	42	35	35	42	42	35	42	42
Black Water Cap (gal)	32	35	35	35	35	35	32	35	35	35	35	35	32	35
Grey Water Cap (gal)	35	32	32	35	35	35	32	32	32	70	70	66	35	60
Tire Size (in)	14"	15"	15"	15"	15"	15"	15"	15"	15"	15"	15"	15"	15"	15"
Awning Size (ft)	12'	12'	12'	16'	16'	23'	21'	16'	20'	18'	18'	18'	21'	21'

All lengths include bumper and hitch

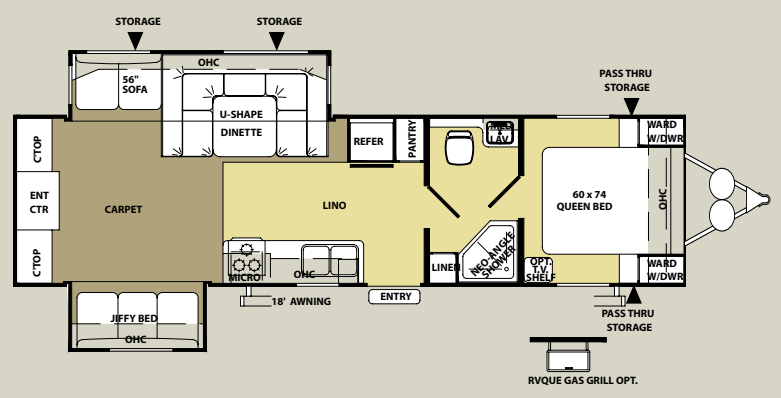
SALEM LE

SALEM LE SLIDE-OUT TRAVEL TRAILERS (CONT.)

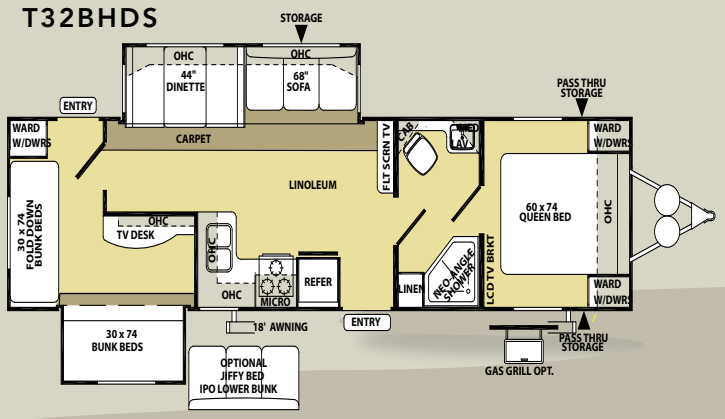
T31QBSS



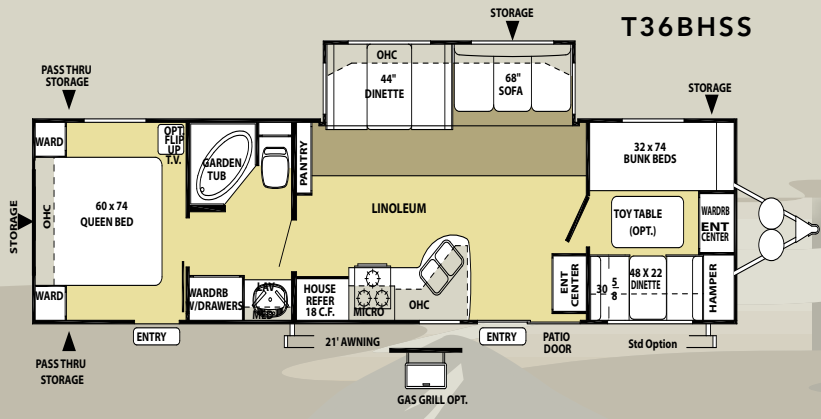
T31RLDS



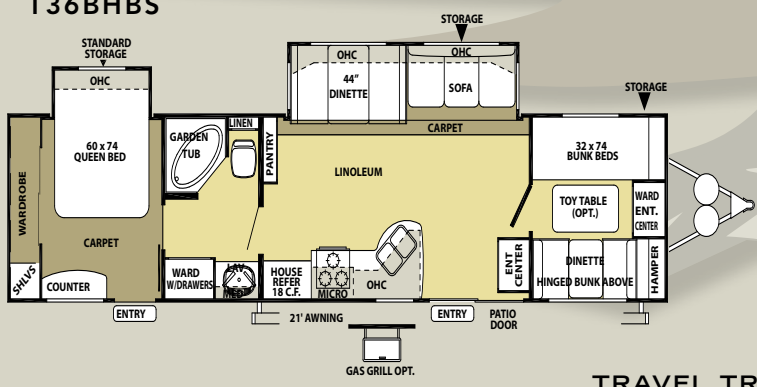
T32BHDS



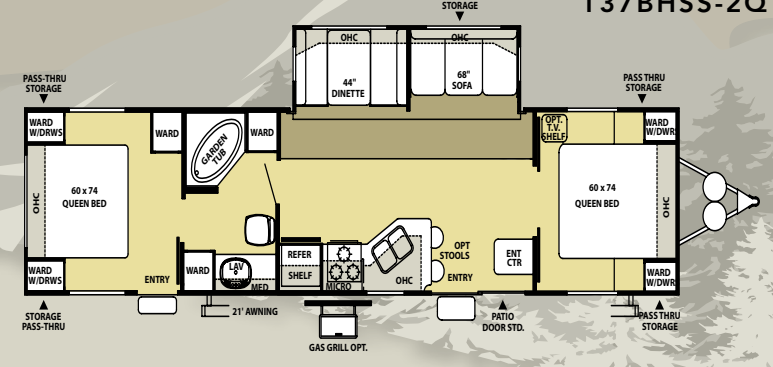
T36BHSS



T36BHBS



T37BHSS-2Q



TRAVEL TRAILER SPECIFICATIONS



Heated and Enclosed Fresh Water Tanks

	31QBSS	31RLDS	32BHDS	36BHSS	36BHBS	37BHSS2Q
Hitch Weight (lb)	805	780	870	990	720	970
Axle Weight	5855	6745	7040	6390	7171	6630
Dry Ship Weight	6660	7525	7910	7380	7891	7600
GVWR	10965	10940	11030	11150	10880	11130
CCC (Cargo Capacity)	4267	3375	3082	3732	2951	3092
Ext Length	34' 7"	34' 10"	36' 3"	37' 6"	36' 7"	39'
Ext Height	11' 1"	11' 1"	11' 1"	11' 1"	11' 1"	11' 1"
Int Height	80"	80"	80"	80"	80"	80"
Fresh Water Cap (gal)	42	42	42	42	42	42
Black Water Cap (gal)	35	32	35	32	32	32
Grey Water Cap (gal)	32	80	64	35	35	35
Tire Size (in)	15"	15"	15"	15"	15"	15"
Awning Size (ft)	18'	18'	18'	21'	21'	21'

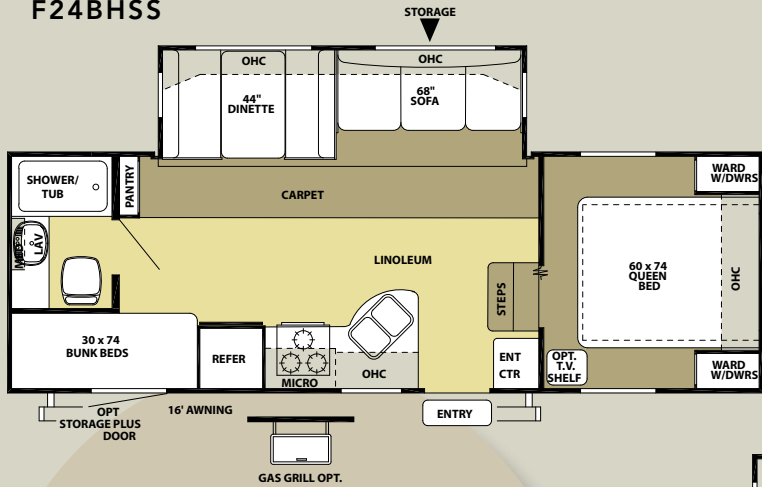
All lengths include bumper and hitch



Pass Thru Storage

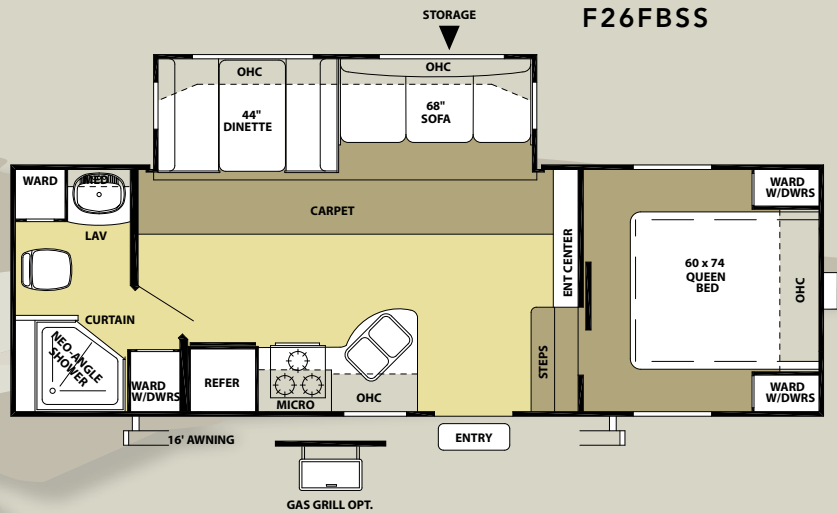
SALEM LE FIFTH WHEELS

F24BHSS

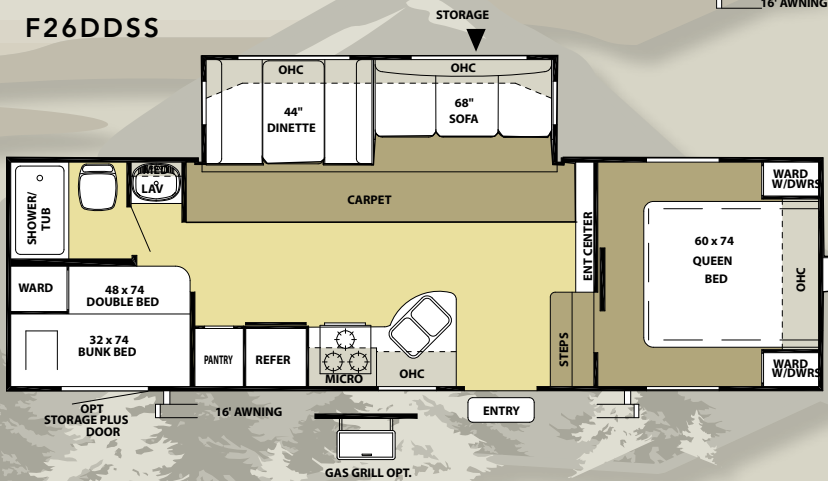


Triple Entry Steps

F26FBSS



F26DDSS

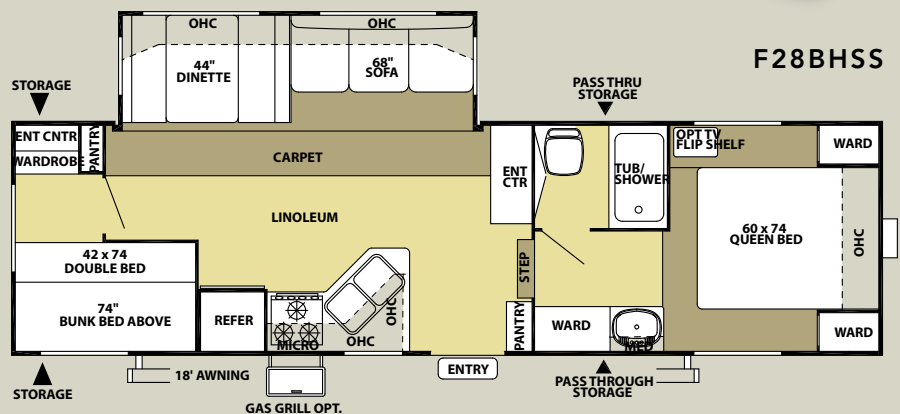


Radius Front with Diamond Plate Rock Guard and Hitch Light

FIFTH WHEEL SPECIFICATIONS

	F24BHSS	F26FBSS	F26DDSS	F28BHSS
Hitch Weight (lb)	1050	1055	680	1430
Axle Weight	5000	5250	5230	6160
Dry Ship Weight	6050	6305	5910	7590
GVWR	8050	8055	7680	11590
CCC (Cargo Capacity)	1962	1715	1730	3962
Ext Length	26' 2"	26' 8"	28' 0"	31' 3"
Ext Height	11' 10"	11' 10"	11' 10"	12' 2"
Int Height	84"	84"	84"	84"
Fresh Water Cap (gal)	42	42	42	42
Black Water Cap (gal)	32	32	32	32
Grey Water Cap (gal)	35	32	35	64
Tire Size (in)	15"	15"	15"	15"
Awning Size (ft)	16'	16'	21'	18'

All lengths include bumper and hitch



F28BHSS

Standards and Options

CONSTRUCTION AND EXTERIOR

- Radius Baggage Doors with Thumb Pulls and Holdbacks
- Full Pass Through Storage (per floorplan)
- A & E Awning with one piece vinyl
- Jalousie Windows
- Steel Framed 30" Smooth Fiberglass Main Entry Door
- Sofa Exterior Storage Door
- Fender Skirts
- Powder Coated I-beam frame
- Cambered Chassis
- Enclosed Fresh Water Tank in a Heated Compartment
- 6-Gal. LP Water Heater
- Water Heater By-pass
- Seamless Roto-cast Holding Tanks
- 2" Wall Construction 16" (or less) on Center
- R-7 Fiberglass Insulation Throughout
- 13 ply Cross Micro-Laminated Beam Header above Slide-outs
- Double Wipe Slide-out Seal (Slide-out models)
- Electric Slide-Out Systems (Flush Floor)
- Swing Arm Entry Assist Handle

KITCHEN

- Dometic® Double Door Refrigerator
- High Rise Kitchen Faucet
- Deep Basin 60/40 Residential Style Sink
- Microwave with Carousel
- 3-Burner, High Output Range with Oven
- Range Hood with 12-Volt Exhaust Fan and Light
- Armstrong® ToughGuard™ Flooring
- Rounded Counter Tops with Matching Edge
- Solid Wood Drawers
- Knife Rack (behind cooktop)
- Large Overhead Cabinets
- Wall-Mounted Systems Monitor Panel
- Brushed Nickel Hardware

LIVING ROOM

- 80" Interior Height Travel Trailers (84" Fifth Wheel models)
- 69" Interior Slide Height (Slide-out models)
- 13,500 BTU Roof Air Conditioner
- Flip Down Storage under Sofa (n/a sofa hide-a-bed)
- Extra Large 44" Pedestal Booth Dinette (most Slide-out models)
- Large Dinette Picture Window
- TV Antenna and Booster
- Standard AM/FM Stereo w/ CD and 4 Cube Speakers
- Full Length Extra Large Overhead Cabinets (Slide-out models)
- Patio Door with Vertical Blinds (36BHSS, 37BHSS2Q, 36BHBS)
- Decorative wall light
- 25K BTU Suburban Forced Air DSI Furnace with Thermostat
- In-Floor Ducted Heat

- 26" Flatscreen w/DVD TV (TT 27RBE, 28DDSS, 29BHBS, 29QBBS, 30QBSS, 32BHDS, 28RLSS FW 26DDSS, 26FBSS)

BEDROOM

- Strut Lifted Storage Area under Bed
- Bedside Wardrobes with Drawers
- Bedside A/C Power Outlets (2)
- Solid Bedroom Privacy Doors (Most Models)

BATHROOM

- 12-Volt Power Bath Roof Exhaust Vent
- Wooden Medicine Cabinet with Mirrored Door
- Thetford® Fresh-Water Flush Toilet

SECURITY AND SAFETY

- LP Leak detector
- Smoke Detector
- Carbon Monoxide Detector
- Fire Extinguisher
- Hitch Light (Travel Trailers)
- Amber Patio Light
- Welded Heavy Duty Safety Chains (Travel Trailers)
- Electric Brakes (all wheels)
- GFI Receptacles

SALEM LE OPTIONS

- Black Frame Safety Glass Tinted Windows
- 6-Gallon Gas/Electric DSI Water Heater
- 13,500 or 15,000 BTU Ducted Air w/ Quick Cool
- Outside Shower
- Stabilizer Jacks (Travel Trailer (4) or Fifth Wheel (2))
- Electric Front Jacks (Fifth Wheel models)
- Double Air Hide-A-Bed Sofa
- 54" Double Air Hide-A-Bed Sofa (29BHBS, 29QBBS, 31RLDS, 26TBUD)
- Insulated Storage Plus Door with Jalousie Window (per floorplan)
- Cable TV Hook-up
- Skylight over Tub
- Tub Surround
- 30-lb LP Bottles with Cover and Auto Change (Travel Trailers)
- Two Marine Grade Exterior Speakers
- Sliding Glass Patio Door (29FKSS, 29FLSS)
- Neo-Angle Glass Shower w/ Tub Surround (Mandatory Option 28FBSS, 28RLSS, 29FKSS, 29FLSS, 31RLDS and 32BHDS)

Contact your Salem dealer for a complete list of options

Forest River Encourages You to Buy Locally

Forest River, Inc. strongly encourages our retail customers to purchase from their local dealership whenever possible due to the following factors:

- Our Dealers are as a rule, independently owned and operated businesses. Outside of those customers they personally sold products to, they are not contractually obligated to perform warranty service on Forest River products that were purchased elsewhere. There may be an occasion that you would be required to return to the point of purchase to satisfy warranty requirements.
- Although many dealerships will eventually service products not purchased at their place of business, they will usually take care of their customers and other Forest River customers who are traveling away from their local dealer as they would their own.
- Local purchases allow a customer to establish a relationship with a dealer close to home. This relationship provides the customer with a convenient location for service and support from a "home town" professional.
- The opportunity for a thorough PDI (Pre Delivery Inspection) and product orientation is an additional benefit of buying from your local dealer. Further providing the opportunity for refresher courses or the ability to get questions answered much more conveniently.
- For our Canadian customers, there are also requirements which must be met to bring an RV purchased out of the country to their home. Although not insurmountable, these requirements may involve such things as additional inspections and certifications, taxes and fees. Your local Canadian Dealer is a professional at meeting these requirements.

Forest River's goal is for all RV Owners to fully enjoy their RV experience. In light of this goal, and considering the advantages of buying local, we encourage you to be thorough when determining what product to purchase and which dealer to purchase it from as both are key to your ultimate satisfaction and the realization of your dreams.



Forest River has yet another exclusive feature to offer: One year of free roadside assistance will be given to every 2009 Salem customer. This is just one more way to say "Thank you" and to ensure an enjoyable traveling experience.

YOUR SALEM DEALER



Forest River, Inc.
914 C.R. 1
Elkhart, IN 46514
(574) 533-5934
www.forestriverinc.com
www.forestriveraccessories.com