

**FLEETWOOD**  
*Driven to Explore*



*{Tioga}*  
Break Through.



TIOGA and TIOGA SL-Class C-2006



YOU CAN ADVENTURE  
THE WAY YOU ALWAYS DREAMED.  
LIVE FOR THE MOMENT  
AND THROW CAUTION TO THE ROAD.  
OUT HERE, THE ONLY  
THING YOU HAVE TO WORRY ABOUT IS  
WHERE TO GO NEXT.



## The Functional Tioga.

Enjoy your surroundings thanks to Tioga's large dinette window for a great view of the patio. The kitchen offers an integrated spice and knife rack for your convenience, durable

mortise & tenon cabinet doors, sink covers for additional counter space and deluxe roller bearing full extension drawer guides give full access to all the drawers.



**THE MONITOR PANEL** provides a central place to check the battery/holding tank levels, and turn the generator and water pump on and off.

**TIOGA'S SAFETY FEATURES** include a carbon monoxide detector, smoke detector and fire extinguisher to make your travels worry free.

**SPACIOUS OVERHEAD STORAGE** in the galley has adjustable shelves and allows plenty of room to store full-size plates, dishes or glasses.

**THE SPACIOUS FLEXSTEEL® SOFA BED** has a lifetime warranty on the frame and includes a useful fold down snack tray with cup holders.



*Tioga 29V shown in Blue Dusk interior decor with Windsor Birch cabinetry.*



### Quiet Time.

Rest is assured after a long day of fun thanks to Tioga's comfortable innerspring mattress and pleated night shades, keeping the sun out for those mid-day naps. Adjustable reading lights will also help to make you feel

at home. Tioga's bedroom also features ample storage space, so you can bring plenty of clothes and extra bedding. Traveling has never felt so convenient and been so much fun.



**A RESIDENTIAL SIZED MEDICINE CABINET** with mirrored doors, vanity lighting, generous storage for toiletries, and a skylight in the bathroom are very convenient features to have on the road.



**WELL DESIGNED WARDROBE STORAGE** allows you to take a variety of clothing for all your adventures (31M shown).



**AN ELEGANT GLASS ENCLOSED SHOWER** features a flexible hose extension with water saver feature that helps to conserve your water supply while you're out dry camping (31M shown).



**THE DINETTE** easily converts to provide additional sleeping accommodations and features functional storage space underneath.



**UNDER-THE-BED STORAGE** is an ideal place to store extra bedding, towels or clothing for your travels.



**THE BEDROOM TV SHELF** includes a 12V receptacle, cable jacks and folds away for your convenience, making it easy to watch some TV (TV not included).

## Tioga SL

### More in SL.

Tioga SL offers all the features of Tioga plus some exclusive extras all its own. Enjoy luxurious Ultraleather™ driver and passenger seats, a convection microwave oven for efficient cooking and deluxe interior choices modeled after the

Class A Diesel line. SL utilizes every inch with its spacious living room layout, complete with accessible storage for your traveling convenience and a sound dampening roof for peace and quiet.



**THE CABOVER BED** makes excellent use of Tioga SL's space with this convenient sleeping area that includes a cargo net and a concealed compartment for additional storage space.



**THE LARGE DINETTE** comfortably seats 4, featuring built in cupholders and a large window for a great view of the patio.



**UNDER-THE-DINETTE STORAGE** features an easy to use pull-out basket that is removable for easy loading and unloading.



*Tioga SL 31W shown in Fern Valley interior decor with Windsor Birch Cabinetry.*



**A FOLD-OUT COUNTERTOP** paired with sink covers (not shown) gives you great additional countertop space for all your cooking needs.

**THE POTS & PANS DRAWER** is specifically designed to conveniently store large cooking items.

**A BUILT-IN UTENSIL TRAY** features deluxe roller bearing full extension drawer guides, allowing for full access to your cooking utensils.





**Well Rounded.**

A home cooked meal is easy in SL's well appointed galley. Take advantage of fresh water filtration and a 3-burner range with convection microwave oven for your cooking convenience. You'll also love glass cabinet door inserts and

a single lever metal faucet just like home. In the bedroom, you'll enjoy deluxe fabric stylings, elegant cabinetry and an all together relaxing environment. Practicality and style have never looked this good together.



**TIOGA SL'S ROOMY BATHROOM** features a large vanity and plenty of storage space for toiletries.

**THE LARGE ENTRY ASSIST HANDLE** in the entry way is long, enabling people of all heights to use it. It's also very sturdy and makes for easy entry and exit.

**ENJOY A QUEEN-SIZE INNERSPRING MATTRESS** in Tioga SL's comfortable bedroom. You'll also enjoy under-the-bed storage for extra linens and towels.

**WELL DESIGNED WARDROBE STORAGE** with mirrored door provides ample room for clothing and to store footwear.

## Tioga

### THICK TUFF-COAT® EXTERIOR FIBERGLASS SIDEWALLS

Are Vacu-bonded® into a strong composite structure, as opposed to competitors' thin fiberglass laminate.

### DRIP RAIL MOLDINGS

Channel excess water through spouts to the rear and front of the unit. This helps to prevent sidewall streaking.

### OUR TUFF-PLY ROOF

Is UV resistant, durable, easy to clean, and doesn't scratch like many competitors' fiberglass or aluminum roofs.



### POWDER COATED STEEL RUNNING BOARDS

Are sleek, stylish and add to Tioga's curb appeal.

Vehicle shown in Blue Dusk.

## Tioga SL (All the Tioga offers plus more.)

### EXTERIOR AWNING

Is standard on the SL and provides great protection from the weather, so you can enjoy your surroundings rain or shine.

### ONE-PIECE FIBERGLASS FRONT CAP

Is stylish and aerodynamic.

### ALCOA® ALUMINUM WHEELS

Are standard, which give the vehicle a stylish look.

### HEATED HOLDING TANKS

Help to prevent winter freezing and are positioned in the bottom center platform to increase stability.

### BASEMENT STORAGE

Features aluminum doors with struts and paddle latches for easy access to all your travel gear.



Vehicle shown in Fern Valley.



### THE DRIVER'S DASH

includes an AM/FM radio with CD player, integrated cup holders, storage console and an optional back up monitor with one-way audio (SL shown with Ultraleather™ seats, dash application and power heated side mirrors).



### THE OPTIONAL EXTERIOR ENTERTAINMENT CENTER

includes a weather resistant AM/FM stereo with CD player and 12V plug with cable hook-up (strut-assisted door with TV shelf available on select models).

### THE EXTERIOR SHOWER

(optional on Tioga) provides an excellent place to rinse off after a day of activities. The SL also offers a central utility compartment.



### THE REAR FUEL FILL

is easily accessible when refueling your RV no matter what side of the pump the vehicle is on.

### PASS-THROUGH STORAGE

allows you to carry oversized items like water skis, fishing poles or wake boards (29V only).



### EXTERIOR EZ-STORE STORAGE COMPARTMENTS

move with the slide-out in order to ensure easy access to all of your stored items. (Available on select models.)

## SIX EXTERIORS, SIX INTERIORS. THE CHOICE IS YOURS.

For 2006, choose from diverse exterior graphics and interior fabric motifs. Three for Tioga and three for Tioga SL.

### TIOGA INTERIOR DÉCOR AND EXTERIOR GRAPHICS



#### BLUE DUSK

Living/Dining Room

Bedroom



Sofa Bed & Dinette Cushions



Swivel Chair & Living Room Valance



Bedspread



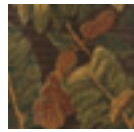
Pillow Shams



#### DUNE GRASS GREEN

Living/Dining Room

Bedroom



Sofa Bed & Dinette Cushions



Swivel Chair & Living Room Valance



Bedspread



Pillow Shams



#### WALNUT LEAF

Living/Dining Room

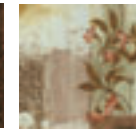
Bedroom



Sofa Bed & Dinette Cushions



Swivel Chair & Living Room Valance



Bedspread

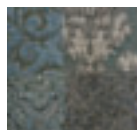


Pillow Shams

### TIOGA SL INTERIOR DÉCOR AND EXTERIOR GRAPHICS



#### COOL ICE



Sofa Sleeper & Dinette Cushions



Sofa Throw Pillow



Bedspread & Pillow Shams



Throw Pillow



#### FERN VALLEY



Sofa Sleeper & Dinette Cushions



Sofa Throw Pillow



Bedspread & Pillow Shams



Throw Pillow



#### PECAN GROVE

Living/Dining Room

Bedroom



Dinette Cushions



Sofa Sleeper



Bedspread & Pillow Shams



Throw Pillow

## What Drives You?

Maybe it's feeling like you're the only one on Earth. Perhaps it's the unique sense of closeness with the great outdoors. Or, it might be the joy that comes from spending quality time with family and friends. Whatever the reason, we know that you have a strong drive to experience everything that comes with spending time on the road. And for more than 50 years, we've shared that passion with you. Because we're RV enthusiasts ourselves, you can see our passion in the vehicles we design and build. Own a Fleetwood, and you'll feel like you're not just traveling, but embarking on an experience unlike any other. Set your own course for adventure and get out there and explore the world around you. Once you do, you'll see what it is that drives us — it's you.

**RV OWNERCARE\*** is a limited one-year/15,000-mile and three-year/50,000-mile structural warranty, whichever occurs first, and it is fully transferable for the first 12 months. RV OWNERCARE is one of the RV industry's most comprehensive programs and includes systems, appliances, components and construction, with no deductible and no service charge. RV OWNERCARE coverage is provided from a company that will be around in the future to service your needs. See your nearest Fleetwood dealer for a full explanation of benefits and restrictions.

**FLEETWOOD TRAVELCADE CLUB** As a Fleetwood owner, you're eligible to become a member of our owners' group, Fleetwood Travelcade Club. It's a perfect way to meet other Fleetwood owners who love to travel to beautiful resorts and vacation spots all across America. Call (877) 577-2560 and join the fun! Or visit [www.fleetwood.com/clubs](http://www.fleetwood.com/clubs) to learn more.

**FLEETWOODRV.COM** To locate a dealer near you, visit our website or call 1-800-444-4905. We can also be contacted at Fleetwood Customer Relations, P.O. Box 7638, Riverside, CA 92513-7638.

**IMPORTANT—PLEASE READ** Product information, photography and illustrations included in this publication were as accurate as possible at the time of printing. For further product information and changes, please visit our website at [www.fleetwoodrv.com](http://www.fleetwoodrv.com) or contact your local Fleetwood dealer. Prices, materials, design and specifications are subject to change without notice. All weights, fuel, liquid capacities and dimensions are approximate. Fleetwood has designed its recreational vehicles to provide a variety of uses for customers. Each vehicle features optimal seating, sleeping, storage and fluid capacities. The user is responsible for selecting the proper combination of loads (i.e.: occupants, equipment, fluids, cargo, etc.) to ensure that the vehicle's capacities are not exceeded.

Your local Fleetwood dealer is:

[www.fleetwoodrv.com](http://www.fleetwoodrv.com)

\*For complete info see your Fleetwood dealer. © 2005. Fleetwood Enterprises, Inc. Printed in the USA. Inventory control number T106B1 3/05.

**tread lightly!**  
LEAVING A GOOD IMPRESSION

